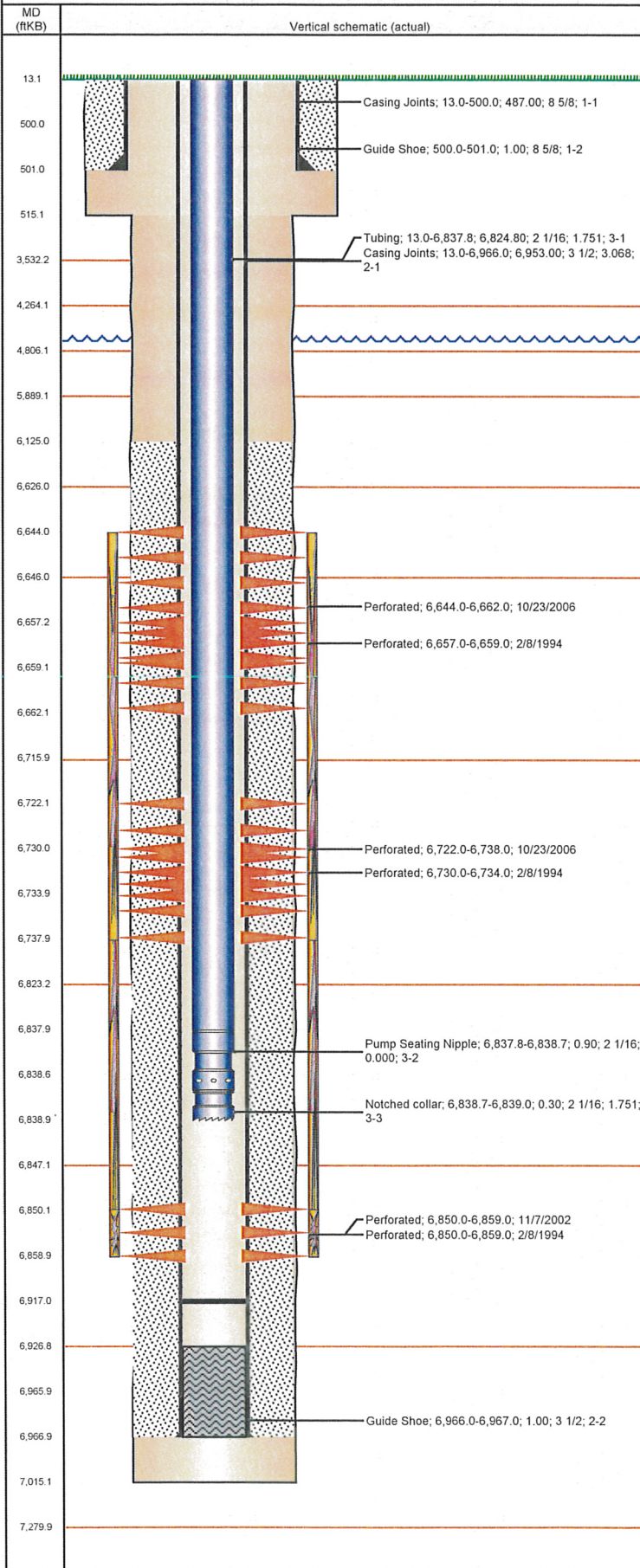


Well Name: STATE 16-0314

VERTICAL - ORIGINAL HOLE, 7/30/2012 10:21:58 AM



## Well Header

|  |                               |                       |                         |
|--|-------------------------------|-----------------------|-------------------------|
| API<br>05-123-17791                    | Business Unit<br>WATTENBERG   | District<br>15        | Well Config<br>VERTICAL |
| Original KB Elevation (ft)<br>4,685.00 | KB - GL / MSL (ftKB)<br>13.00 | Spud Date<br>2/2/1994 | P & A Date              |

Comment  
LCTN MVD, NOT REFLECTED ON LOGS, KB=13'

Directions To Well  
CR 46 & CR 55 WEST 1/2 SOUTH INTO

Current PBTD (ftKB)  
ORIGINAL HOLE - 6,917.0

## Surface Location (Congressional)

| Quarter 1 | Quarter 2 | Quarter 3 | Quarter 4 | Section | Township | Twnshp N.. | Range | Rng E/W Dir |
|-----------|-----------|-----------|-----------|---------|----------|------------|-------|-------------|
|           |           | NE        | NW        | 16      | 4        | N          | 64    | W           |

## Bottom Hole Location

| North-South Distance (ft) | From N or S Line | East-West Distance (ft) | From E or W Line |
|---------------------------|------------------|-------------------------|------------------|
|                           |                  |                         |                  |

## Plug Back Total Depths

| Date     | Depth (ftKB) | Method         | Com                 |
|----------|--------------|----------------|---------------------|
| 2/8/1994 | 6,917.0      | CASED HOLE LOG | DEPTH LOGGER ON CBL |
| 3/9/2007 | 6,927.0      | TAG            | C/O & LAND TBG      |

## Wellbore Sections

| Section Des | Size (in) | Act Top (ftKB) | Act Btm (ftKB) |
|-------------|-----------|----------------|----------------|
| SURFACE     | 12 1/4    | 13.0           | 515.0          |
| PRODUCTION  | 7 7/8     | 515.0          | 7,015.0        |

## Zone Statuses

| Zone Name | Status Date | Status | Job  |
|-----------|-------------|--------|--|
| CODELL    | 2/25/1994   | PR     | DRILLING/COMPLETION - ORIGINAL, 2/2/1994 00:00 |
| CODELL    | 11/13/2002  | PR     | RE-FRAC, 11/6/2002 00:00                       |
| CODELL    | 10/18/2006  | SI     | RE-FRAC, 10/18/2006 00:00                      |
| CODELL    | 3/13/2007   | PR     | RE-FRAC, 10/18/2006 00:00                      |
| CODELL    | 3/9/2012    | PR     | TRI-FRAC, 12/8/2011 06:00                      |
| NIOBRARA  | 2/25/1994   | PR     | DRILLING/COMPLETION - ORIGINAL, 2/2/1994 00:00 |
| NIOBRARA  | 12/16/2006  | PR     | DRILLING/COMPLETION - ORIGINAL, 2/2/1994 00:00 |
| NIOBRARA  | 3/13/2007   | PR     | RE-FRAC, 10/18/2006 00:00                      |

## Casing Strings

| Csg Des    | Run Date | OD (in) | Wt/Len (lb/ft) | Grade | Top (ftKB) | Set Depth (ftKB) |
|------------|----------|---------|----------------|-------|------------|------------------|
| Surface    | 2/2/1994 | 8 5/8   | 23.00          | M-50  | 13.0       | 501.0            |
| Production | 2/6/1994 | 3 1/2   | 7.70           | B-70  | 13.0       | 6,967.0          |

## Cement

| Des                      | Top (ftKB) | Btm (ftKB) |
|--------------------------|------------|------------|
| SURFACE CASING CEMENT    | 13.0       | 501.0      |
| PRODUCTION CASING CEMENT | 6,125.0    | 6,967.0    |

## Tubing Components

| Item Des            | OD (in) | Wt (lb/ft) | Grade | Jts | Len (ft) |
|---------------------|---------|------------|-------|-----|----------|
| Tubing              | 2 1/16  | 3.25       | J-55  | 211 | 6,824.80 |
| Pump Seating Nipple | 2 1/16  | 3.25       | N-80  | 1   | 0.90     |
| Notched collar      | 2 1/16  | 3.25       | J-55  | 1   | 0.30     |

## Perforation Data

| Zone                    | Brch/St g | Entered Shot Total | Top (ftKB) | Btm (ftKB) | Date       |
|-------------------------|-----------|--------------------|------------|------------|------------|
| NIOBRARA, ORIGINAL HOLE |           | 108                | 6,644.0    | 6,662.0    | 10/23/2006 |
| NIOBRARA, ORIGINAL HOLE |           | 2                  | 6,657.0    | 6,659.0    | 2/8/1994   |
| NIOBRARA, ORIGINAL HOLE |           | 96                 | 6,722.0    | 6,738.0    | 10/23/2006 |
| NIOBRARA, ORIGINAL HOLE |           | 4                  | 6,730.0    | 6,734.0    | 2/8/1994   |
| CODELL, ORIGINAL HOLE   |           | 9                  | 6,850.0    | 6,859.0    | 2/8/1994   |
| CODELL, ORIGINAL HOLE   |           | 40                 | 6,850.0    | 6,859.0    | 11/7/2002  |

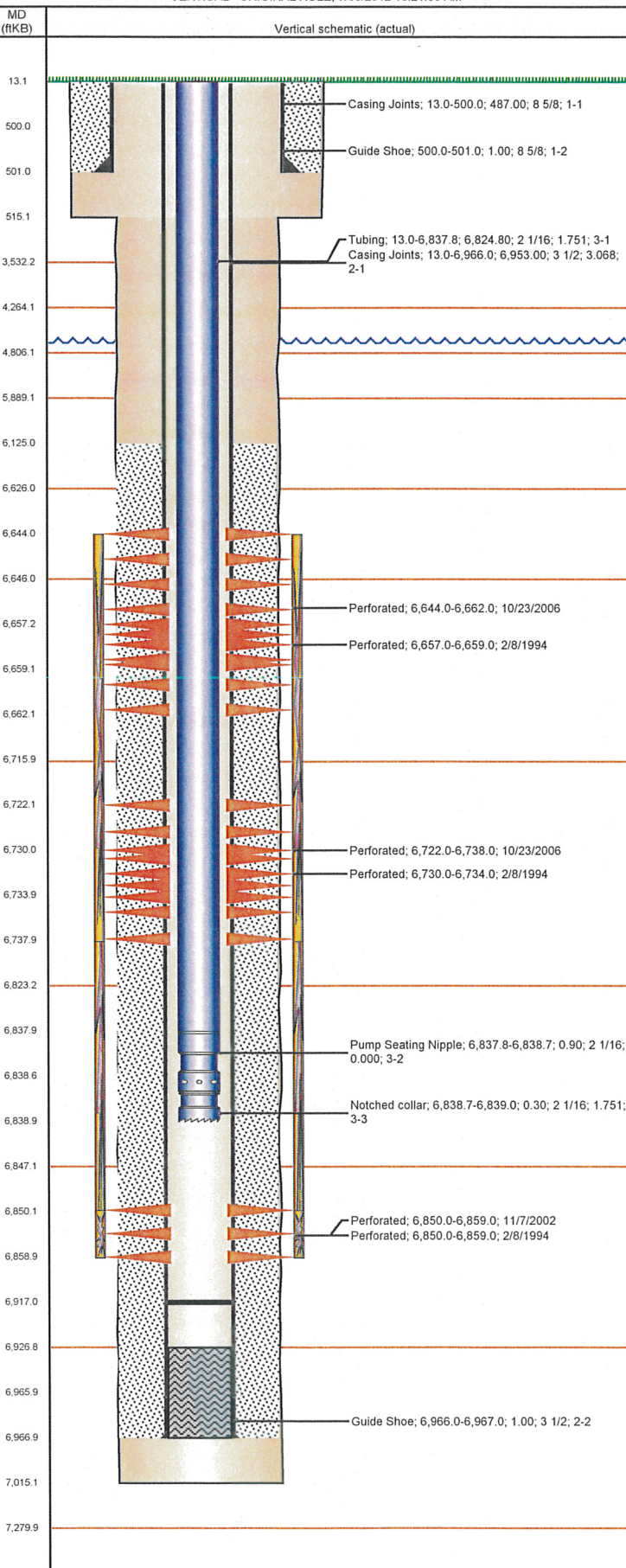
## Stimulations & Treatments

| Brch/St g                              | Date     | Zone                                | Primary Job Type                  |
|--|----------|-------------------------------------|-----------------------------------|
|  | 2/9/1994 | NIOBRARA-CODELL, ORIGINAL HOLE      |                                   |
| Comment<br>C/N LIMITED ENTRY FRAC      |          |                                     |                                   |
| Total Add Amount<br>Proppant 337500 lb |          | Total Clean Volume...               | Vol Slurry Tot (gal)<br>79254.00  |
| Avg Treat Pressure (psi)<br>5,000.0    |          | Max Treat Pressure (psi)<br>5,400.0 | Avg Treat Rate (bbl/min)<br>22.00 |
|  |          |                                     | Max Treat Rate (bbl/min)          |



Well Name: STATE 16-0314

VERTICAL - ORIGINAL HOLE, 7/30/2012 10:21:59 AM



## Stimulations & Treatments

|  |                   |                          |                          |                          |            |
|--|-------------------|--------------------------|--------------------------|--------------------------|------------|
| Bnch/Stg   | Date              | Zone                     | Primary Job Type         |                          |            |
|  | 11/12/2002        | CODELL, ORIGINAL HOLE    |                          |                          |            |
| Comment  |                   |                          |                          |                          |            |
| Total Add Amount   |                   | Total Clean Volume...    | Vol Slurry Tot (gal)     | Vol Gas Tot (MCF)        |            |
| Proppant Ottawa 241960 lb  |                   |                          | 131670.00                |                          |            |
| Avg Treat Pressure (psi)   |                   | Max Treat Pressure (psi) | Avg Treat Rate (bbl/min) | Max Treat Rate (bbl/min) |            |
| 7,472.0  |                   | 8,000.0                  | 14.10                    | 14.10                    |            |
| Bnch/Stg   | Date              | Zone                     | Primary Job Type         |                          |            |
|  | 12/15/2006        | NIOBRARA, ORIGINAL HOLE  |                          |                          |            |
| Comment  |                   |                          |                          |                          |            |
| Total Add Amount   |                   | Total Clean Volume...    | Vol Slurry Tot (gal)     | Vol Gas Tot (MCF)        |            |
| Proppant Ottawa 236586 lb;<br>Proppant SB Excel 12000 lb   |                   |                          | 247884.01                |                          |            |
| Avg Treat Pressure (psi)   |                   | Max Treat Pressure (psi) | Avg Treat Rate (bbl/min) | Max Treat Rate (bbl/min) |            |
| 6,246.0  |                   | 6,522.0                  | 35.30                    | 36.10                    |            |
| Bnch/Stg   | Date              | Zone                     | Primary Job Type         |                          |            |
|  | 12/22/2011        | CODELL, ORIGINAL HOLE    | TRI-FRAC                 |                          |            |
| Comment  |                   |                          |                          |                          |            |
| (CODELL TF)<br>OPEN WELL WITH NO PRESSURE, FORMATION BREAK 6285 PSI @ 2.0 PSI.<br>PRE-TREATMENT ISIP= 3832 PSI, 5 MIN= 2335 PSI,<br>DURING PAD LOST THROTTLE ON 2 FRAC PUMPS HAVING TO SHUTDOWN<br>TO WORK ON THEM, DOWN FOR 20 MIN.<br>PRE-TREATMENT ISIP= 3960 PSI, 5 MIN= 3797 PSI, AVGS: VISC= 28.4 CP,<br>PH= 10.25, TEMP= 63.41 F, PRESS= 7537 PSI, RATE= 15.46 BPM, MAX:<br>PRESS= 7786 PSI, RATE= 16.08 BPM.<br>JOB WENT WELL. |                   |                          |                          |                          |            |
| Total Add Amount   |                   | Total Clean Volume...    | Vol Slurry Tot (gal)     | Vol Gas Tot (MCF)        |            |
| Ottawa 245909.896 lb   |                   | 128409.12                | 139559.70                |                          |            |
| Avg Treat Pressure (psi)   |                   | Max Treat Pressure (psi) | Avg Treat Rate (bbl/min) | Max Treat Rate (bbl/min) |            |
| 7,537.0  |                   | 7,786.0                  | 15.46                    | 16.08                    |            |
| Other In Hole  |                   |                          |                          |                          |            |
| Run Date   | Des               |                          | OD (in)                  | Top (ftKB)               | Btm (ftKB) |
|  |                   |                          |                          |                          |            |
| Logs   |                   |                          |                          |                          |            |
| Date   | Type              |                          | Top (ftKB)               | Btm (ftKB)               |            |
| 2/6/1994   | INDUCTION         |                          | 500.0                    | 6,972.0                  |            |
| 2/6/1994   | SONIC CEMENT BOND |                          | 6,500.0                  | 6,913.0                  |            |