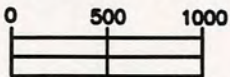
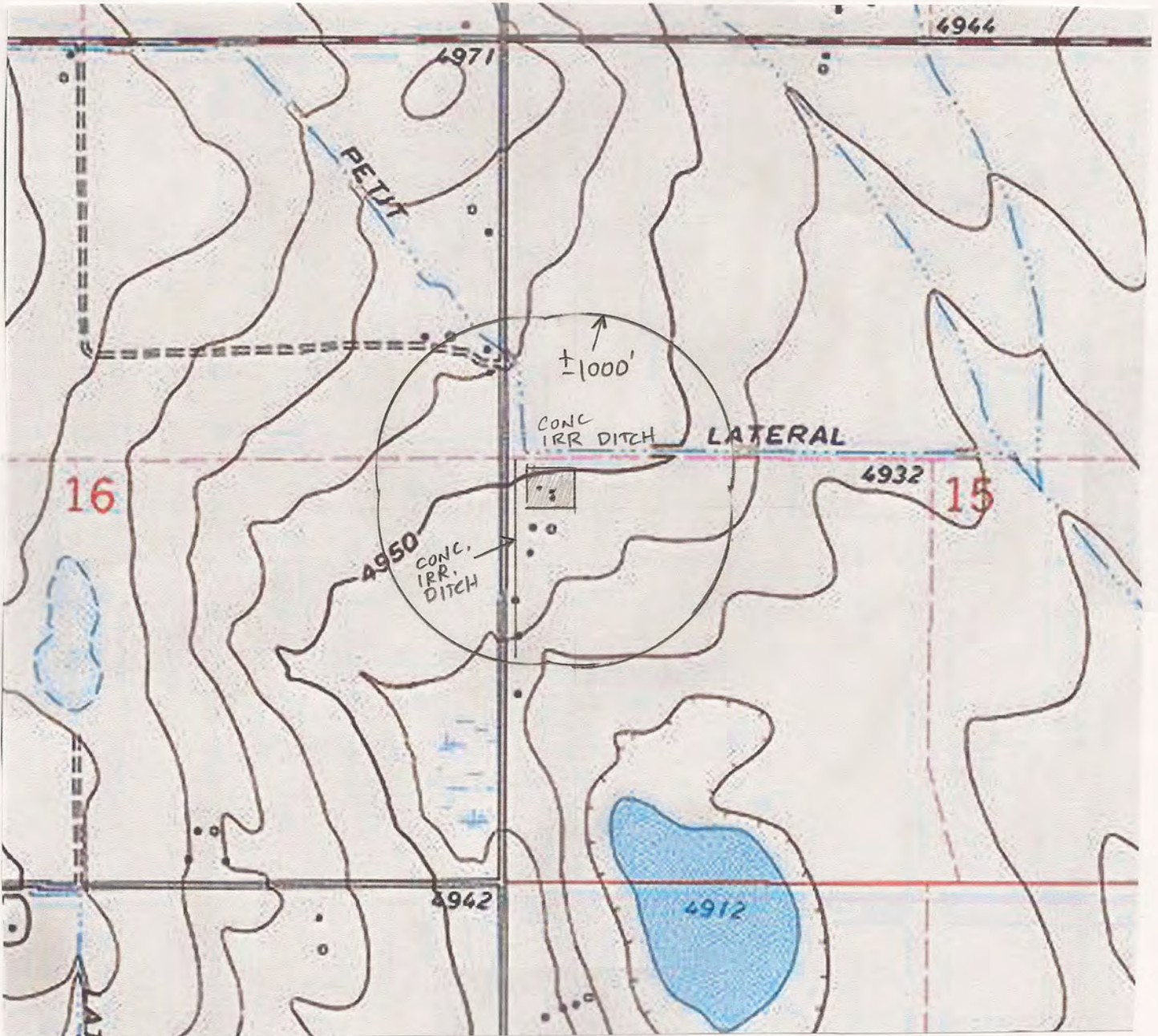


HYDROLOGY / TOPOGRAPHY MAP

NW1/4 SEC. 15 T7N R66W, 6TH P.M.



APPROX. SCALE
1" = 1000'

CONCRETE IRRIGATION DITCHES ARE 217' W & 150' N. (FROM 15G-232)
NO OTHER VISIBLE WATER FEATURES WITHIN 1000' OF DISTURBANCE.

PREPARED BY:

HORSESHOE SURVEYING, LLC
PO BOX 150458
LAKEWOOD, CO 80215
(720)872-0196

WELL NAME:

DANIELSON 3 WELL PAD
15G-412, 15G-232, 15G-432

DRAWING DATE:

4-24-12

LOCATION:

WELD COUNTY, CO
SW1/4, SEC. 15, T7N, R66W, 6TH P.M.

FIELD DATE:

4-23-12

BY:

TGC