

GREAT WESTERN OIL & GAS COMPANY

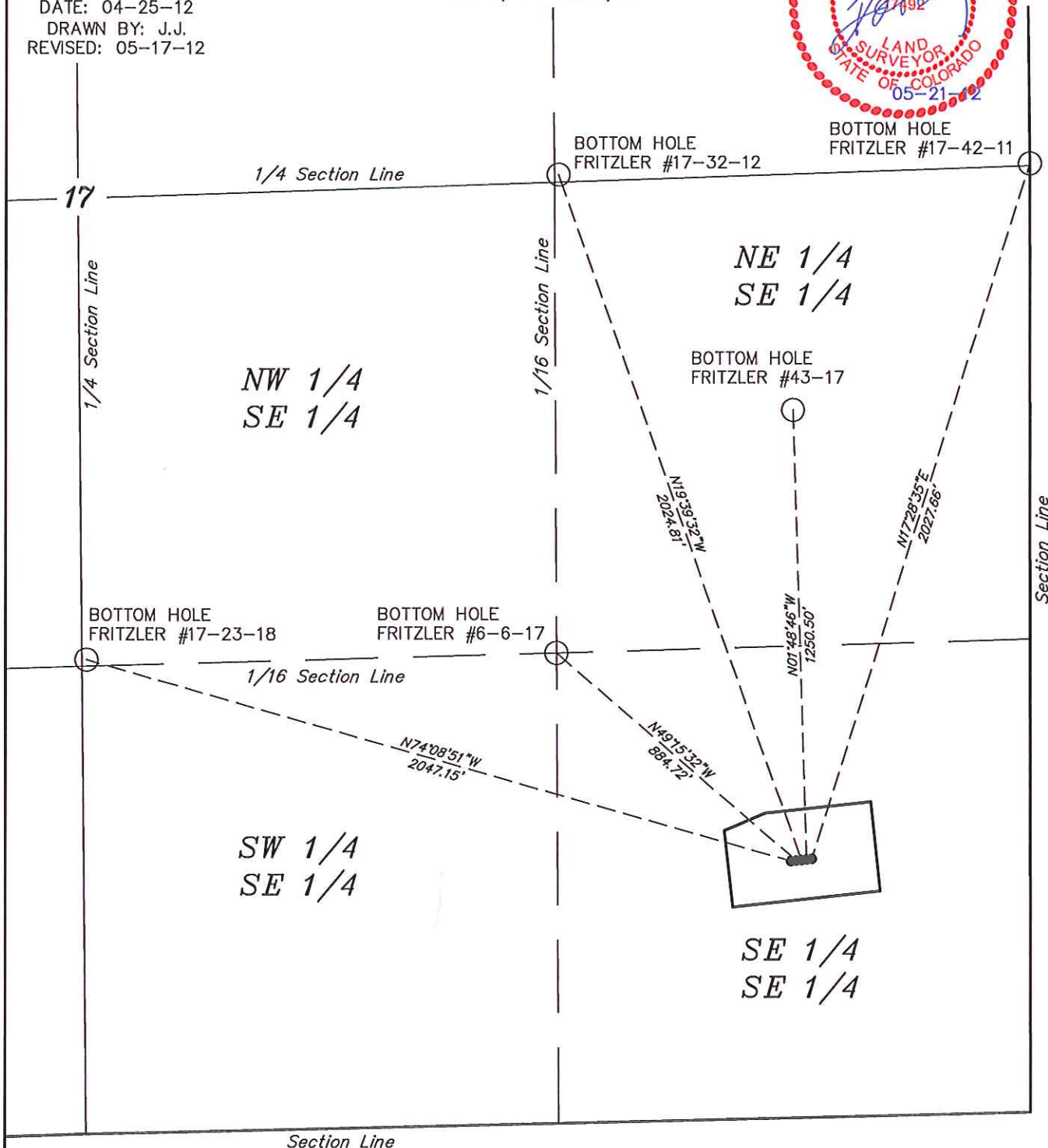
FIGURE #5

BOTTOM HOLE DRAWING FOR

FRITZLER #17-23-18, #6-6-17,
#17-32-12, #43-17 & #17-42-11
SECTION 17, T6N, R66W, 6th P.M.
SE 1/4 SE 1/4



SCALE: 1" = 400'
DATE: 04-25-12
DRAWN BY: J.J.
REVISED: 05-17-12



UINTAH ENGINEERING & LAND SURVEYING

85 So. 200 East * Vernal, Utah 84078 * (435) 789-1017