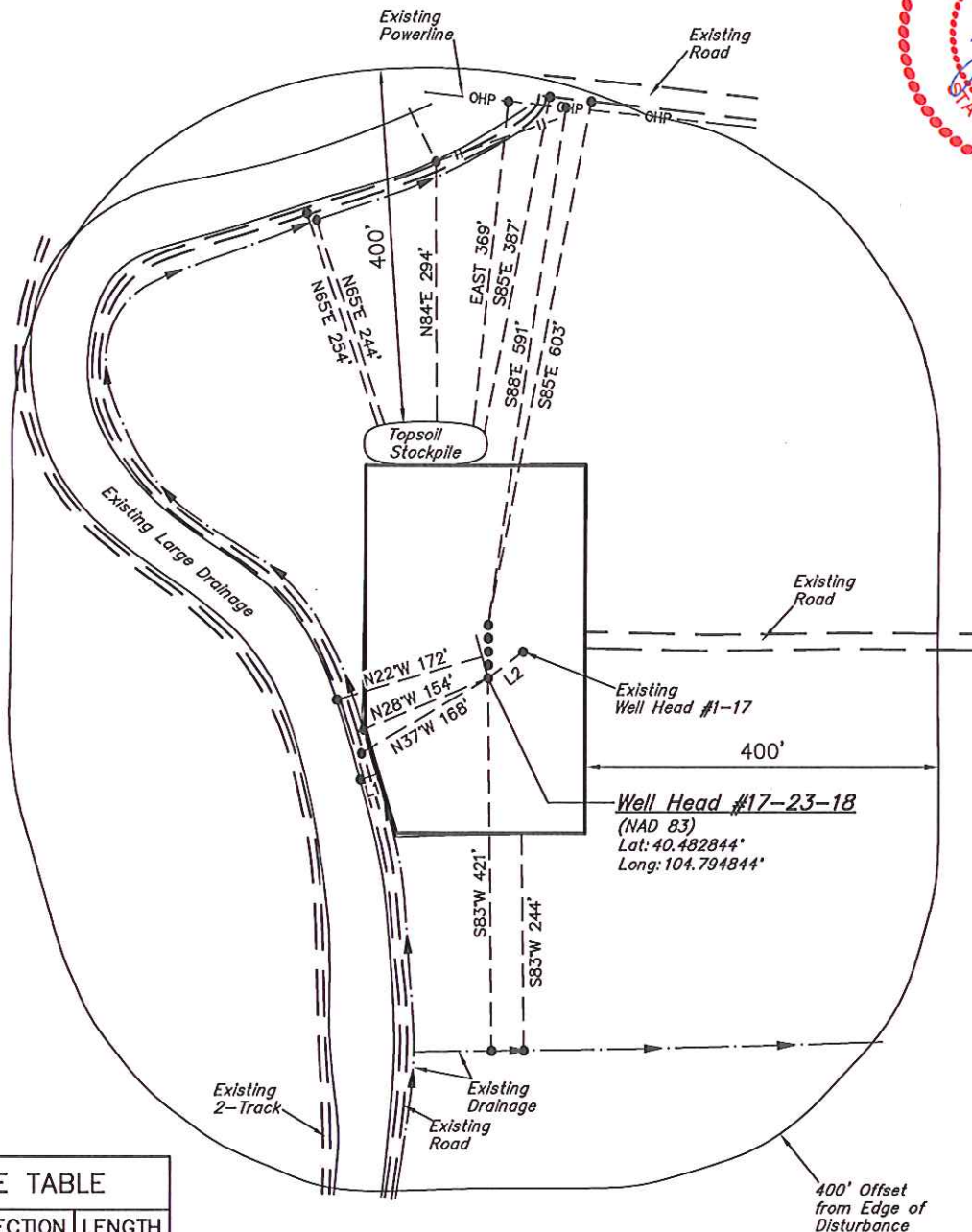


# GREAT WESTERN OIL & GAS COMPANY

## ADDENDUM TO LEGAL PLAT FOR

FRITZLER #17-23-18, #6-6-17,  
#17-32-12, #43-17 & #17-42-11  
SECTION 17, T6N, R66W, 6th P.M.  
SE 1/4 SE 1/4

SCALE: 1" = 200'  
DATE: 04-25-12  
DRAWN BY: J.J.  
REVISED: 05-17-12



LINE TABLE

LINE	DIRECTION	LENGTH
L1	N22°10'08"W	20.47'
L2	S43°02'21"E	49.56'