

Downhole Schematic for Twin Creek 12-3D1 (F12E)



Project :South Piceance

API # :05045203860000

Surface Location : SENW Sec 12 T7S - R92W 6th PM

Area : Mamm Creek

County :

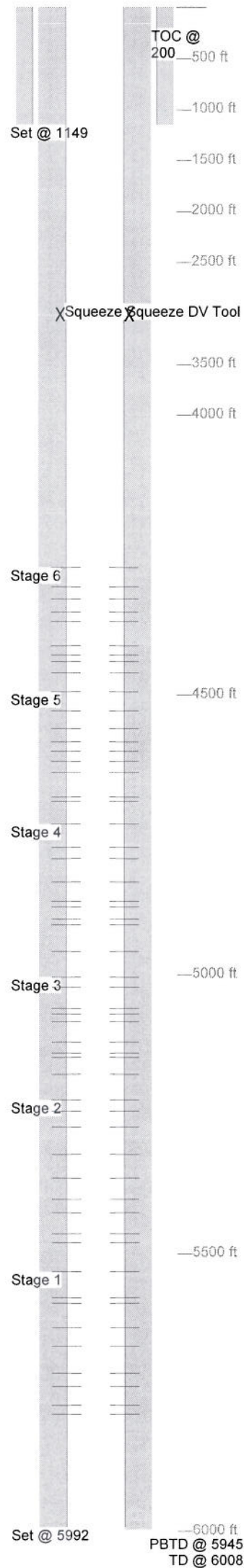
BHL : NENW-12-7S-92 W 6th PM

As Of : 07/17/2012

GL : 6145.0 ft

KB to GL : 22.0 ft

KB : 6167.0 ft



Casing Details		Hole	Casing	Mass	Set At	Length	Thread	Grade	Description	
Section	Conductor	0.000	16	42	0	72		A52A	Joint	
Surface		12.250	9.625	36	1,149	1	LT&C	J55	Float Shoe	
			9.265	36	1,148	45	LT&C	J55	CSG jt	
			9.625	36	1,103	1	LT&C	J55	Float Collar	
			9.625	36	1,102	1,073	LT&C	J55	CSG Jt	
			9.625	36	28	5	LT&C	J55	Wellhead	
Production		8.750	9.625	36	23	27	LT&C	J55	Landing Jt	
			4.5	11.6	5,992	1	Butt	80	F/Shoe	
			4.5	11.6	5,991	45	Butt	S80	It 4.5" S80 BCT	
			4.5	11.6	5,945	1	Butt	80	F/Collar	
			4.5	11.6	5,944	967	Butt	S80	4.5" S80 BCT	
			4.5	11.6	4,977	22	Butt	S80	Marker Jt	
			4.5	11.6	4,955	1,005	Butt	S80	4.5" S80 BCT	
			4.5	11.6	3,950	22	Butt	S80	Marker	
			4.5	11.6	3,928	917	Butt	S80	4.5" S80	
			4.5	11.6	3,011	3	Butt	M80	DV Tool	
			4.5	11.6	3,007	2,987	Butt	S80	4.5" S80	
Conductor			4.5	11.6	21	26	Butt	P110	Landing Joint	
Cement Details										
Section	Sequence		Top	Density	Blend / Additives					
Surface	Tail		0	15.8	G CMT / D029=.25%, D046=.2%, S001=.5%					
Production	Scavenger		0	12.5	Mud Push II /					
	Scavenger		0	12.5	Mud push /					
	Lead		0	14.0	Easy BlockTXI /					
	Lead		159	14.0	Easy block TXI /					
	Tail		2,637	15.8	G /					
Conductor	Fill		0	0.0	4 yards redi mix /					
Perforations										
Stage 1					Stage 4					
Date	From	To	Shots	Date	From	To	Shots			
06/17/2012	5,788	5,790	12	06/19/2012	4,958	4,960	12			
	5,772	5,774	12		4,910	4,912	12			
	5,738	5,740	12		4,900	4,902	12			
	5,714	5,716	12		4,878	4,880	12			
	5,666	5,668	12		4,868	4,870	12			
	5,632	5,634	12		4,834	4,836	12			
	5,588	5,590	12		4,792	4,794	12			
	5,578	5,580	12		4,772	4,774	12			
	5,532	5,534	12		4,730	4,732	12			
	Stage 2					Stage 5				
Date	From	To	Shots	Date	From	To	Shots			
06/17/2012	5,480	5,482	12	06/20/2012	4,690	4,692	12			
	5,464	5,466	12		4,682	4,684	12			
	5,426	5,428	12		4,638	4,640	12			
	5,402	5,404	12		4,618	4,620	12			
	5,364	5,366	12		4,600	4,602	12			
	5,322	5,324	12		4,584	4,586	12			
	5,272	5,274	12		4,560	4,562	12			
	5,244	5,246	12		4,528	4,530	12			
	5,224	5,226	12		4,494	4,496	12			
	Stage 3					Stage 6				
Date	From	To	Shots	Date	From	To	Shots			
06/18/2012	5,178	5,180	12		4,460	4,462	12			
	5,148	5,150	12		4,440	4,442	12			
	5,140	5,142	12		4,428	4,430	12			
	5,120	5,122	12		4,412	4,414	12			
	5,084	5,086	12		4,368	4,370	12			
	5,070	5,072	12		4,352	4,354	12			
	5,060	5,062	12		4,328	4,330	12			
	5,022	5,024	12		4,306	4,308	12			
	5,004	5,006	12		4,272	4,274	12			
	Frac Summary									
Stage 1 : 5,532 - 5,790, 108 - 0.230" shots, 8476 bbls of Slickwater Report Date: 06/17/2012										
Stage 2 : 5,224 - 5,482, 108 - 0.230" shots, 6095 bbls of Slickwater Report Date: 06/17/2012										
Stage 3 : 5,004 - 5,180, 108 - 0.230" shots, 10428 bbls of Slickwater Report Date: 06/18/2012										
Stage 4 : 4,730 - 4,960, 108 - 0.230" shots, 8619 bbls of Slickwater Report Date: 06/19/2012										
Stage 5 : 4,494 - 4,692, 108 - 0.230" shots, 7667 bbls of Slickwater Report Date: 06/20/2012										
Stage 6 : 4,272 - 4,462, 108 - 0.230" shots, 7476 bbls of Slickwater Report Date: 06/20/2012										
Cement Squeeze										
Squeeze #		Squeeze	DV Tool							
Date	From	To	Holes							
06/09/2012	3,007	3,011								
# Sacks	100									
Comments										
SIBHP 0 psi 5/19/12										
SIBHP 0 psi 6/7/12										
SIBP 40 psi 6/13/12										
SIBHP 20 psi 07/16/12										