

Encana OIL & GAS (USA) INC.

ADDENDUM TO LEGAL PLAT FOR

WELL PAD L24 496
SECTION 24, T4S, R96W, 6th P.M.
NW 1/4 SW 1/4

Existing 2-Track

Proposed Access
Road to CDP Site

Proposed Pipeline

Proposed
Bar Ditch

Access Road

Proposed
Bar Ditch

Inslope

Install 18" Culvert

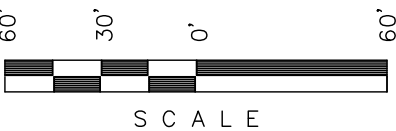
RipRap

Proposed Pipeline
to CDP Site

Detention
Pond

SWMP LEGEND:
SCE - STABILIZED
CONSTRUCTION
ENTRANCE
ST - SEDIMENT TRAP

SCALE: 1" = 60'
DATE: 06-08-11
DRAWN BY: D.R.B.
Revised: 03-31-12 D.R.B.



Sheet 1tt of 11



PROPOSED
CDP SITE

NOTE:
Flare Pit is to
be located a min.
of 100' from the
Well Head.



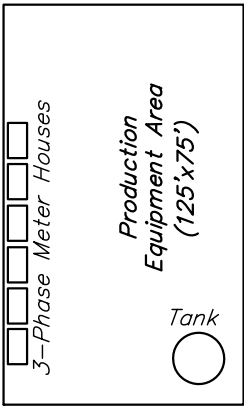
Flare Stack &
Flare Ditch



Cement Pit



Steel Cutting
Bin (45x10x12)



Production
Equipment Area
(125'x75')

Tank

3-Phase Meter Houses

8509E-24 8512E-24
8509D-24 8510E-23
8510D-23 8510C-23
8512C-24 8512D-24
8510B-23 8512B-24
8509C-24 8509B-24
8510A-23 8507E-23
8509A-24 8512A-24
8508E-24 8507D-23
8505D-24 8505E-24
8505C-24 8507C-23
8505B-24 8507B-23
8505A-24 8507A-23
8504E-24 8502E-23
8504D-24 8502D-23
8504C-24 8502C-23

8'

47'

Detention
Pond

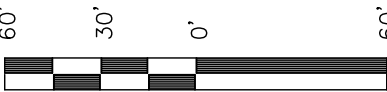
SURFACE USE OF LOCATION IS
GRAZING, VEGETATION CONSISTS
MAINLY OF SAGEBRUSH, OAK
BRUSH & NATIVE GRASSES.

Detention
Pond

Encana OIL & GAS (USA) INC.

WELL PAD INTERFERENCE PLAT

WELL PAD L24 496
SECTION 24, T4S, R96W, 6th P.M.
NW 1/4 SW 1/4

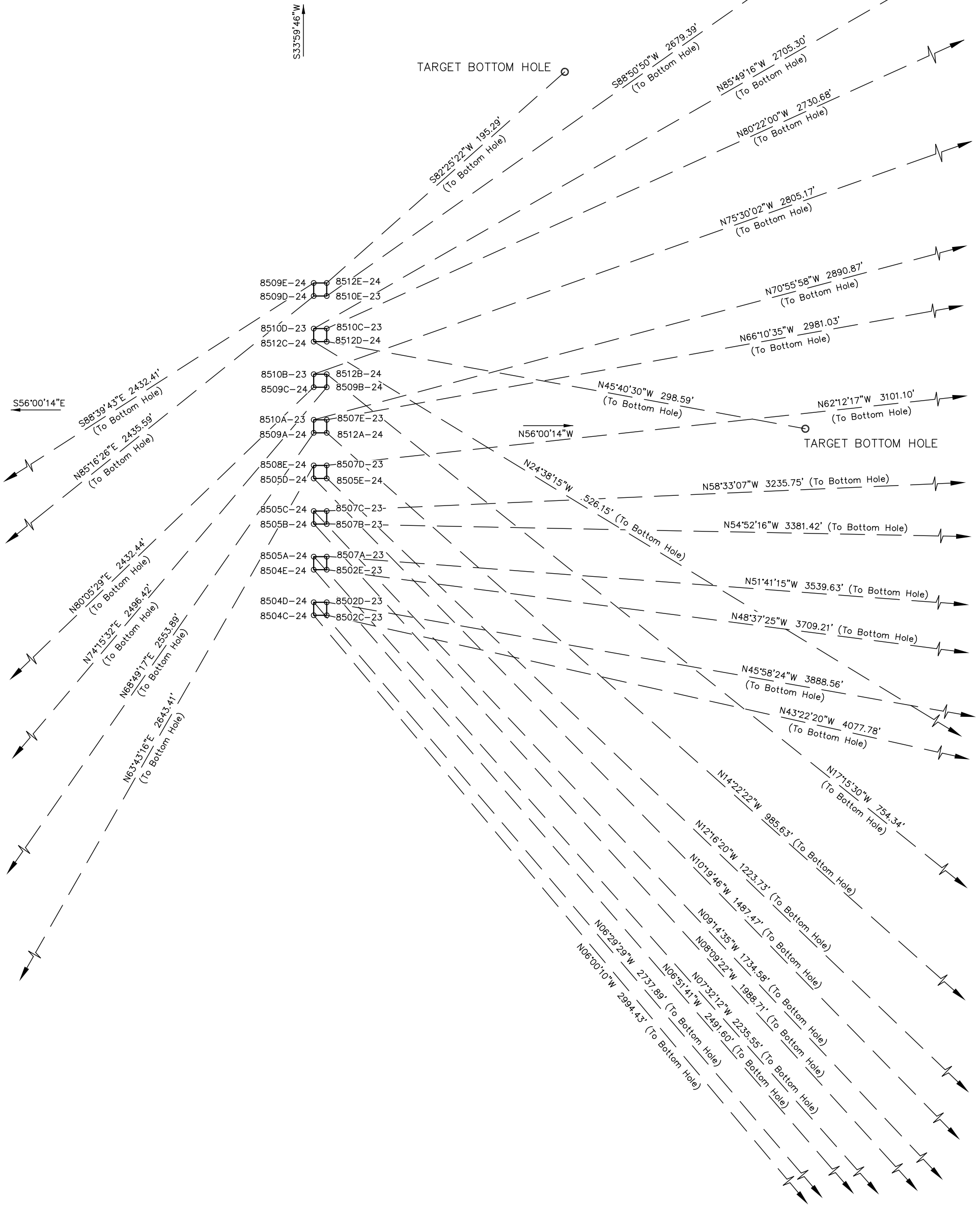


SCALE

Sheet 2 of 11



SCALE: 1" = 60'
DATE: 06-08-11
DRAWN BY: D.R.B.
Revised: 03-31-12 D.R.B.



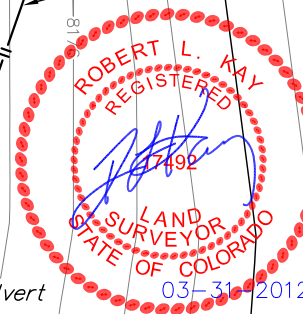
Encana OIL & GAS (USA) INC.

CONSTRUCTION LAYOUT FOR
WELL PAD L24 496
SECTION 24, T4S, R96W, 6th P.M.
NW 1/4 SW 1/4

SCALE: 1" = 60'
DATE: 10-27-10
DRAWN BY: D.R.B.
Rev: 06-08-11 D.R.B.
Revised: 03-31-12 D.R.B.

SCALE
Sheet 3 of 11

PROPOSED
CDP SITE



2.65 Ac. to Deten. Pond #1
4,000 cu.ft./Ac. Pad
Vol. = 10,600 cu.ft.
L= 70', W=40', D=8'

RUN-ON
PROTECTION

C-20.0'
El. 200.0'

NOTE:
Flare Pit is to
be located a min.
of 100' from the
Well Head.

C-5.7'
El. 185.7'

Install 18" Culvert

F-14.2'
El. 165.8'

Sta. 6+04

Flare Stack &
Flare Ditch

Cement Pit

SWMP LEGEND:
ECB - EROSION CONTROL
BLANKET
LSD - LEVEL SPREADER
SCE - STABILIZED
CONSTRUCTION
ENTRANCE
SedR - SEDIMENT
RESERVOIR
SL - SLASH
ST - SEDIMENT TRAP
T - TERRACING
TB - TOE BERM
VB - VEGETATED BUFFER
W - WATTLE

Production
Equipment Area
(125'x75')
Tank

C-4.7'
El. 184.7'

8'x8' (Typ.)
8509E-24 8512E-24
8509D-24 8510E-23
8510D-23 8510C-23
8512C-24 8512D-24
8510B-23 8512B-24
8509C-24 8509B-24

C-4.9'
El. 184.9'

8'x8' (Typ.)
8510A-23 8507E-23
8509A-24 8512A-24
8508E-24 8507D-23
8505D-24 8505E-24
8505C-24 8507C-23
8505B-24 8507B-23
8505A-24 8507A-23
8504E-24 8502E-23
8'x8' (Typ.)
8504D-24 8502D-23
8504C-24 8502C-23

C-5.4'
El. 185.4'

0.24 Ac. to Sed. Res. #1
3,600 cu.ft./Ac. Drainage
Vol. = 864 cu.ft.
L= 36', W=15', D=4'

LEGEND:
St - Septic Tank
G - Generator
WT - Water Tank

F-18.7'
El. 161.3'

Sta. 3+20

LEGEND:
1 - OVERFLOW
2 - SEWER TANK
3 - LIFT STATION
4 - SEWER LINE
5 - WATER TANK
6 - FREEZER
7 - STORAGE
8 - GENERATOR
9 - FUEL
10 - TRANSFORMER

1.47 Ac. to Deten. Pond #3
4,000 cu.ft./Ac. Pad
Vol. = 5,880 cu.ft.
L= 65', W=35', D=6'

MAN CAMP

F-3.7'
El. 176.3'

0.29 Ac. to Sed. Res. #2
3,600 cu.ft./Ac. Drainage
Vol. = 1,044 cu.ft.
L= 44', W=15', D=4'

Sta. 1+60

0.30 Ac. to Sed. Res. #3
3,600 cu.ft./Ac. Drainage
Vol. = 1,080 cu.ft.
L= 45', W=15', D=4'

Round Corners
as Needed

F-23.0'
El. 157.0'

Sta. 0+00

C-2.2'
El. 182.2'

NOTE:
Off-site drainage areas were
determined using USGS topo
from McCarthy Gulch, Colorado
Quad map (2010).

1.52 Ac. to Deten. Pond #2
4,000 cu.ft./Ac. Pad
Vol. = 6,080 cu.ft.
L= 55', W=30', D=8'

Elev. Ungraded Ground At 8505D-24 Loc. Stake = 8184.9'
FINISHED GRADE ELEV. AT 8505D-24 LOC. STAKE = 8180.0'

UINTAH ENGINEERING & LAND SURVEYING
85 So. 200 East * Vernal, Utah 84078 * (435) 789-1017

Encana OIL & GAS (USA) INC.

PRE-CONSTRUCTION LAYOUT FOR

WELL PAD L24 496

SECTION 24, T4S, R96W, 6th P.M.

NW 1/4 SW 1/4

60' 30' 0' 60'

SCALE

Sheet 3a of 11

PROPOSED
CDP SITE



SCALE: 1" = 60'
DATE: 06-08-11
DRAWN BY: D.R.B.
Revised: 03-31-12 D.R.B.

Proposed Pipeline

Proposed Bar Ditch

Access Road

Proposed Bar Ditch

Proposed Access Road to CDP Site

Proposed Pipeline to CDP Site

SWMP LEGEND:

SCE - STABILIZED
CONSTRUCTION
ENTRANCE
W - WATTLE
ST - SEDIMENT TRAP

Inslope

Install 18" Culvert

RipRap

Wattle

Detention Pond

SCE

Install 18" Culvert

NOTE:
Flare Pit is to be located a min. of 100' from the Well Head.

Flare Stack & Flare Ditch

Cement Pit

Steel Cutting Bin (45x10x12)

3-Phase Meter Houses

Production Equipment Area (125'x75')

Tank

8509E-24 8512E-24

8509D-24 8510E-23

8510D-23 8510C-23

8512C-24 8512D-24

8510B-23 8512B-24

8509C-24 8509B-24

8510A-23 8507E-23

8509A-24 8512A-24

8508E-24 8507D-23

8505D-24 8505E-24

8505C-24 8507C-23

8505B-24 8507B-23

8505A-24 8507A-23

8504E-24 8502E-23

8504D-24 8502D-23

8504C-24 8502C-23

S56°00'14"E

196'

N56°00'14"W

190'

4'

320'

8'

47'

Detention Pond

200'

190'

10'

Detention Pond

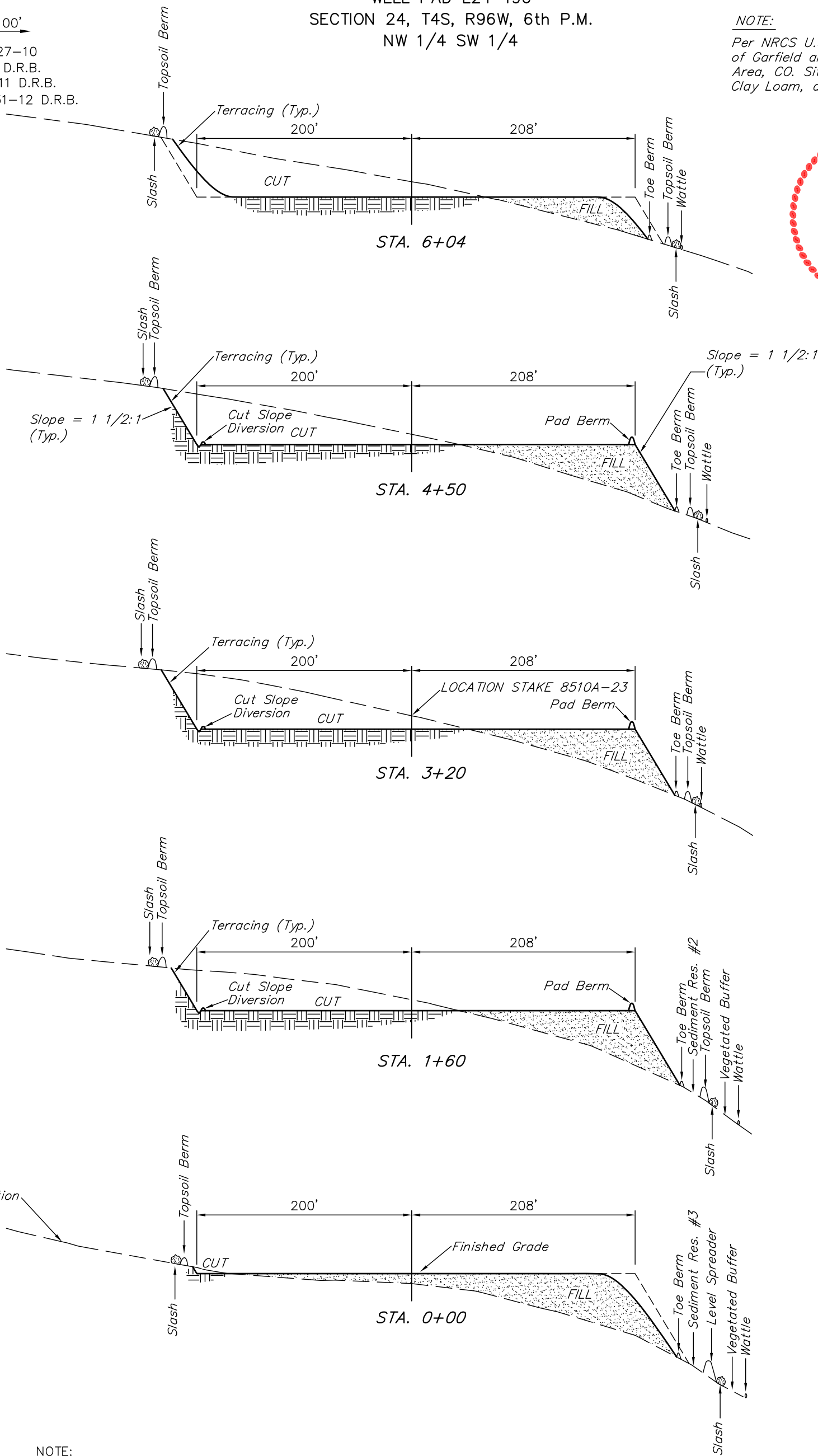
Wattle

Encana OIL & GAS (USA) INC.
CONSTRUCTION LAYOUT CROSS SECTION FOR
WELL PAD L24 496
SECTION 24, T4S, R96W, 6th P.M.
NW 1/4 SW 1/4

Sheet 4 of 11

1" = 40'
X-Section
Scale
1" = 100'
DATE: 10-27-10
DRAWN BY: D.R.B.
Rev: 05-20-11 D.R.B.
Revised: 03-31-12 D.R.B.

NOTE:
Per NRCS U.S. Soil Survey for Parts
of Garfield and Mesa Counties, Rifle
Area, CO. Site has Channery, Sandy
Clay Loam, and Unweathered Bedrock.



NOTE:
Topsoil should not be
Stripped Below Finished
Grade on Substructure Area.

APPROXIMATE YARDAGES

(12") Topsoil Stripping = 11,390 Cu. Yds.
Remaining Location = 49,970 Cu. Yds.
TOTAL CUT = 61,360 CU.YDS.
FILL = 49,970 CU.YDS.

EXCESS MATERIAL = 11,390 Cu. Yds.
Topsoil = 11,390 Cu. Yds.
EXCESS UNBALANCE = 0 Cu. Yds.
(After Interim Rehabilitation)

* NOTE:
FILL QUANTITY INCLUDES
5% FOR COMPACTION

Encana OIL & GAS (USA) INC.

TYPICAL RIG LAYOUT FOR

WELL PAD L24 496

SECTION 24, T4S, R96W, 6th P.M.

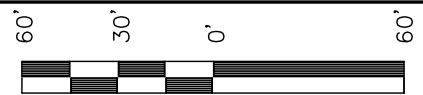
NW 1/4 SW 1/4

SCALE: 1" = 60'

DATE: 06-08-11

DRAWN BY: D.R.B.

Revised: 03-31-12 D.R.B.



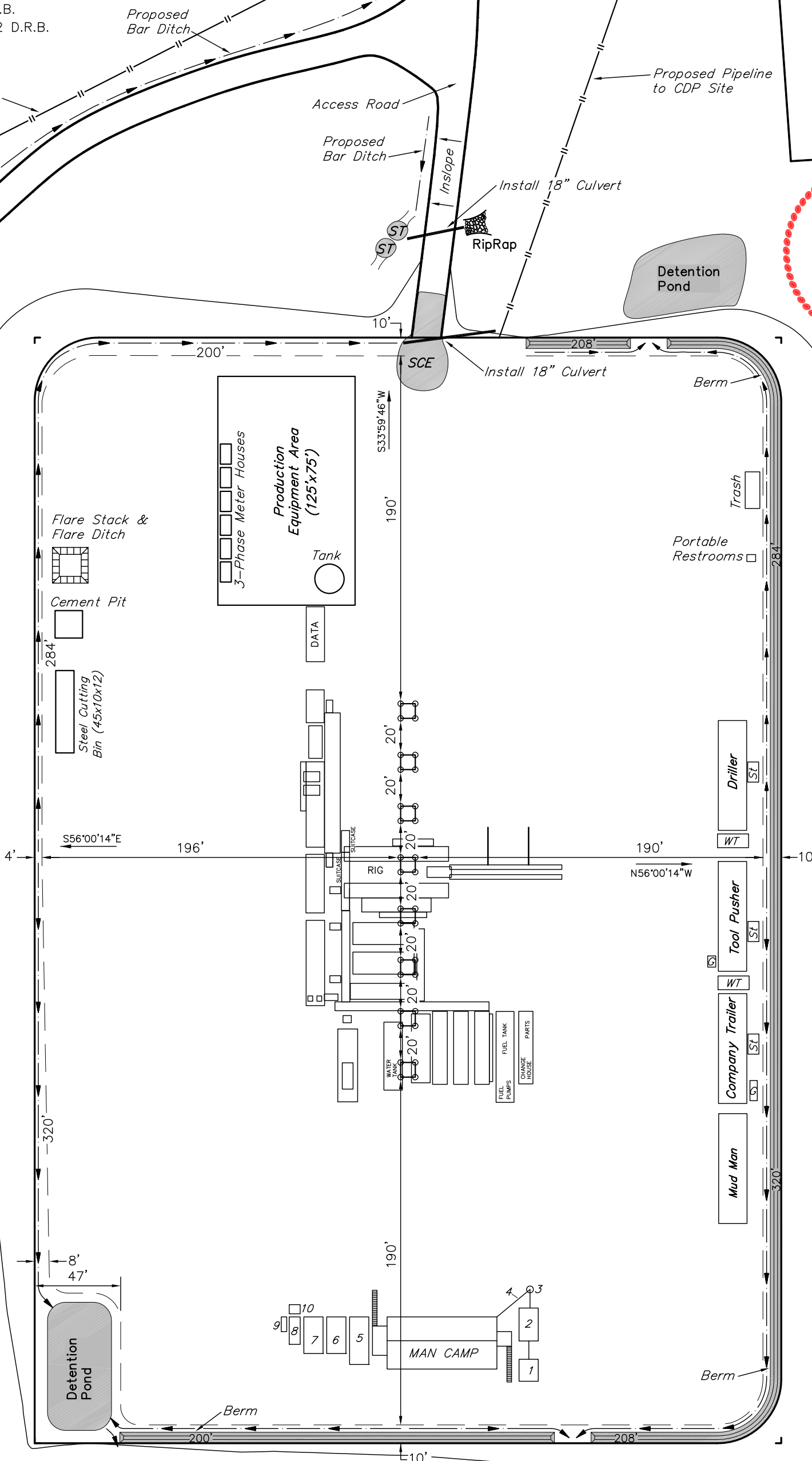
SCALE

Sheet 5 of 11

PROPOSED
CDP SITE



NOTE:
Flare Pit is to
be located a min.
of 100' from the
Well Head.



LEGEND:
ST - Septic Tank
G - Generator
WT - Water Tank

LEGEND:

- 1 - OVERFLOW
- 2 - SEWER TANK
- 3 - LIFT STATION
- 4 - SEWER LINE
- 5 - WATER TANK
- 6 - FREEZER
- 7 - STORAGE
- 8 - GENERATOR
- 9 - FUEL
- 10 - TRANSFORMER

SWMP LEGEND:

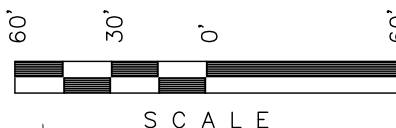
- SCE - STABILIZED
CONSTRUCTION
ENTRANCE
W - WATTLE
ST - SEDIMENT TRAP

Encana OIL & GAS (USA) INC.

PRODUCTION SCHEMATIC FOR

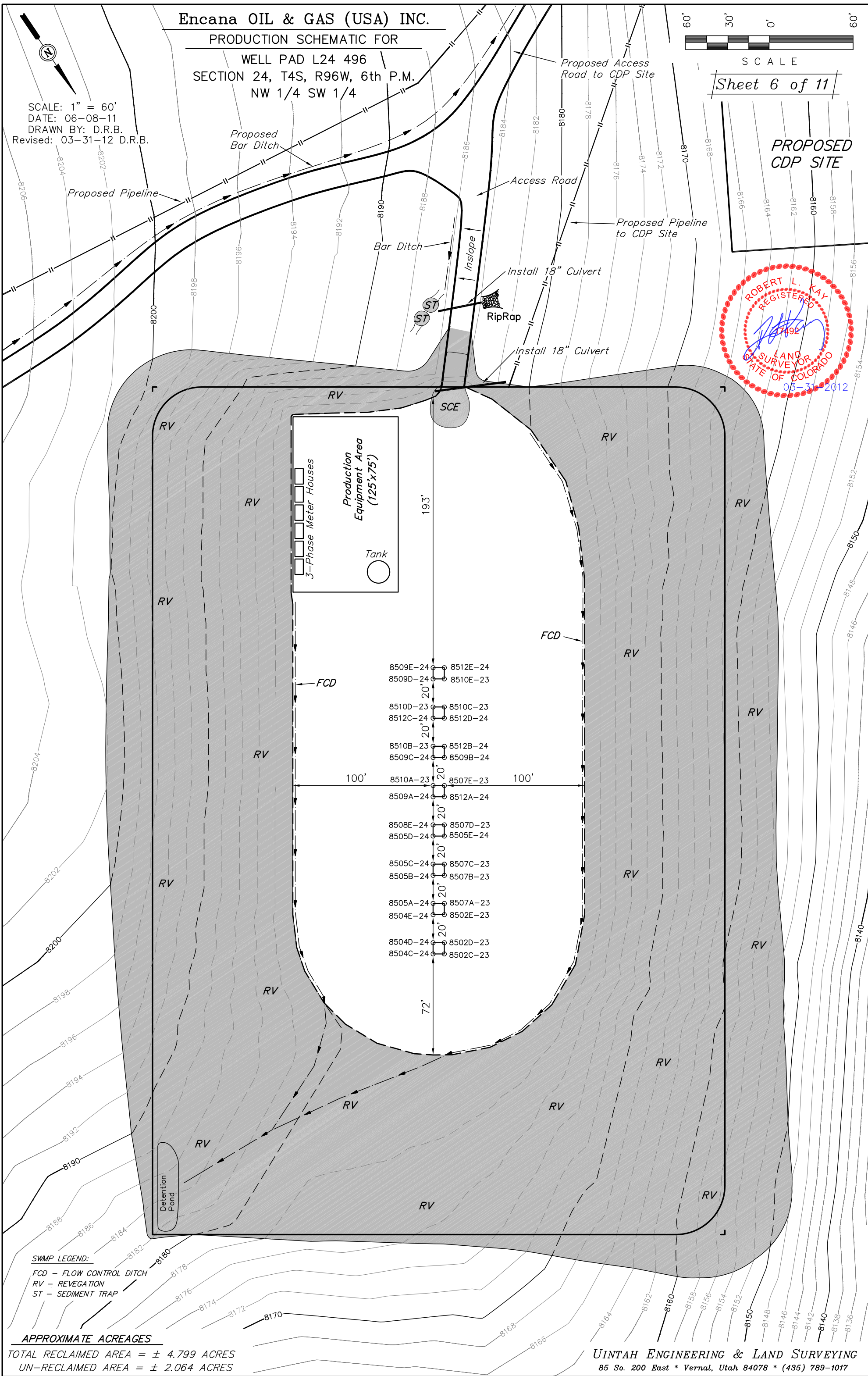
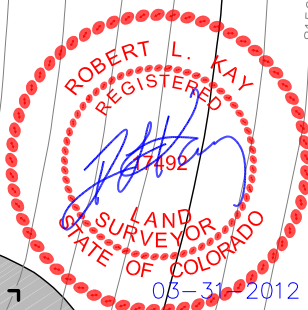
WELL PAD L24 496
SECTION 24, T4S, R96W, 6th P.M.
NW 1/4 SW 1/4

SCALE: 1" = 60'
DATE: 06-08-11
DRAWN BY: D.R.B.
Revised: 03-31-12 D.R.B.



Sheet 6 of 11

PROPOSED
CDP SITE



Encana OIL & GAS (USA) INC.

SURFACE DISTURBANCE AREA FOR

WELL PAD L24 496
SECTION 24, T4S, R96W, 6th P.M.
NW 1/4 SW 1/4

SCALE: 1" = 60'
DATE: 06-08-11
DRAWN BY: D.R.B.
Revised: 03-31-12 D.R.B.

Proposed Pipeline

Proposed Bar Ditch

Access Road

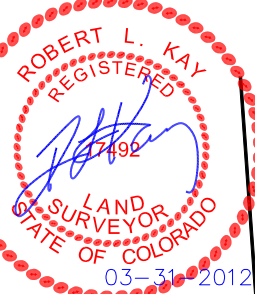
Proposed Bar Ditch

Proposed Access Road to CDP Site

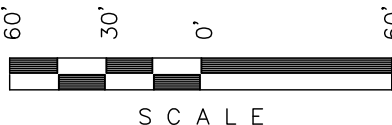
Proposed Pipeline to CDP Site

Install 18" Culvert

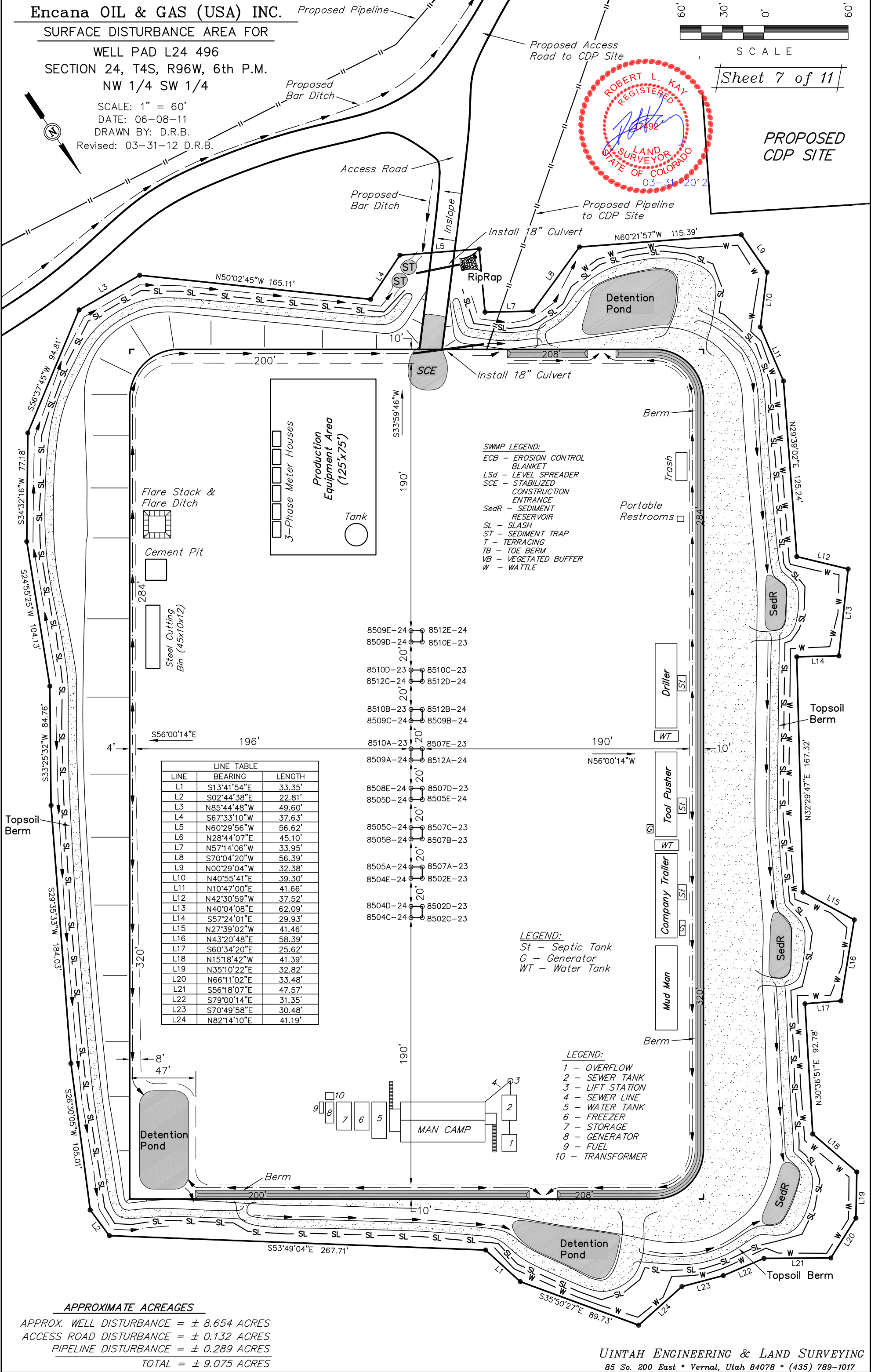
Install 18" Culvert



PROPOSED CDP SITE



Sheet 7 of 11



APPROXIMATE ACREAGES

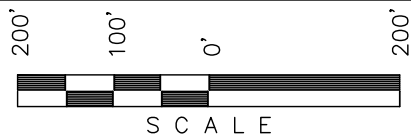
APPROX. WELL DISTURBANCE = ± 8.654 ACRES
ACCESS ROAD DISTURBANCE = ± 0.132 ACRES
PIPELINE DISTURBANCE = ± 0.289 ACRES
TOTAL = ± 9.075 ACRES

N00°04'12"E - 2542.70' (Meas.)
N00°01'50"W - 2850.56' (Meas.)
Section Line

NE Cor Sec 24,
1953 Brass Cap,
0.2' High, Pile of
Stones, Steel Post
Lat: 39.695158°
Long: 108.126422°
E 1/4 Cor. Sec. 23,
1953 Brass Cap, 0.2'
High, Steel Post
Lat: 39.688369°
Long: 108.126478°
W 1/4 Cor. Sec. 24,
1953 Brass Cap, 0.9'
High, Steel Post
Lat: 39.688081°
Long: 108.126475°



Encana OIL & GAS (USA) INC.
LOCATION DRAWING FOR
WELL PAD L24 496
SECTION 24, T4S, R96W, 6th P.M.
NW 1/4 SW 1/4
SCALE: 1" = 200'
DATE: 06-08-11
DRAWN BY: D.R.B.
Revised: 03-31-12 D.R.B.



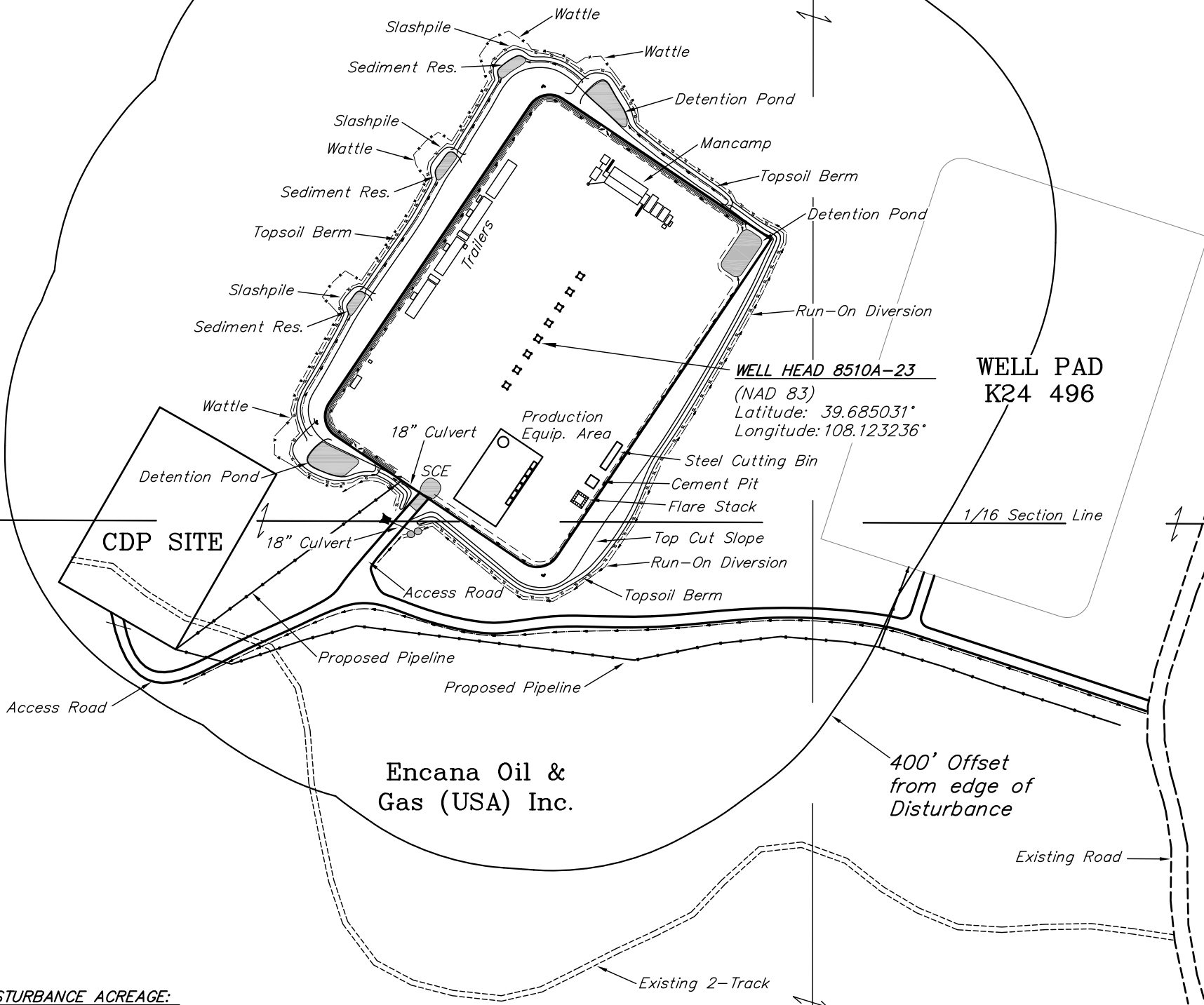
Sheet 7a of 11

24



Encana Oil &
Gas (USA) Inc.

400' Offset
from edge of
Disturbance



DISTURBANCE ACREAGE:
5.639 ± DRILLING OPERATIONS
2.064 ± INTERIM RECLAIM

FUTURE LAND USE				
CROP LAND:	<input type="checkbox"/> IRRIGATED	<input type="checkbox"/> DRY LAND	<input type="checkbox"/> IMPROVED PASTURE	<input type="checkbox"/> HAY MEADOW <input type="checkbox"/> CRP
NON-CROP LAND:	<input checked="" type="checkbox"/> RANGELAND	<input type="checkbox"/> TIMBER	<input type="checkbox"/> RECREATIONAL	<input type="checkbox"/> OTHER (Describe)
SUBDIVIDED:	<input type="checkbox"/> INDUSTRIAL	<input type="checkbox"/> COMMERCIAL	<input type="checkbox"/> RESIDENTIAL	

PLANT COMMUNITY	Existing Features (Distance from 8510A-23)	
<input type="checkbox"/> DISTURBED GRASSLAND	Building	N22°E 5,200'
<input type="checkbox"/> NATIVE GRASSLAND	Public Road	S76°E 1,035'
<input type="checkbox"/> SHRUB LAND	Property Line	NORTH 3,691'
<input type="checkbox"/> PLAINS RIPARIAN	Utility	S05°E 38,300'
<input type="checkbox"/> MOUNTAIN RIPARIAN	Surface Water	S80°E 5,800'
<input checked="" type="checkbox"/> FOREST LAND	Railroad	S10°E 77,800'
<input type="checkbox"/> WETLANDS AQUATIC		
<input type="checkbox"/> ALPINE		
<input type="checkbox"/> OTHER (Describe):		

CURRENT LAND USE				
CROP LAND:	<input type="checkbox"/> IRRIGATED	<input type="checkbox"/> DRY LAND	<input type="checkbox"/> IMPROVED PASTURE	<input type="checkbox"/> HAY MEADOW <input type="checkbox"/> CRP
NON-CROP LAND:	<input checked="" type="checkbox"/> RANGELAND	<input type="checkbox"/> TIMBER	<input type="checkbox"/> RECREATIONAL	<input type="checkbox"/> OTHER (Describe)
SUBDIVIDED:	<input type="checkbox"/> INDUSTRIAL	<input type="checkbox"/> COMMERCIAL	<input type="checkbox"/> RESIDENTIAL	

1953 Brass Cap
0.5' High, Mound of
Stones, Steel Post
Lat: 39.680547°
Long: 108.126500°

S89°40'00"W - 2641.14' (Meas.)

S 1/4 Cor Sec 24
1953 Brass Cap,
0.5' High
Lat: 39.680569°
Long: 108.117119°