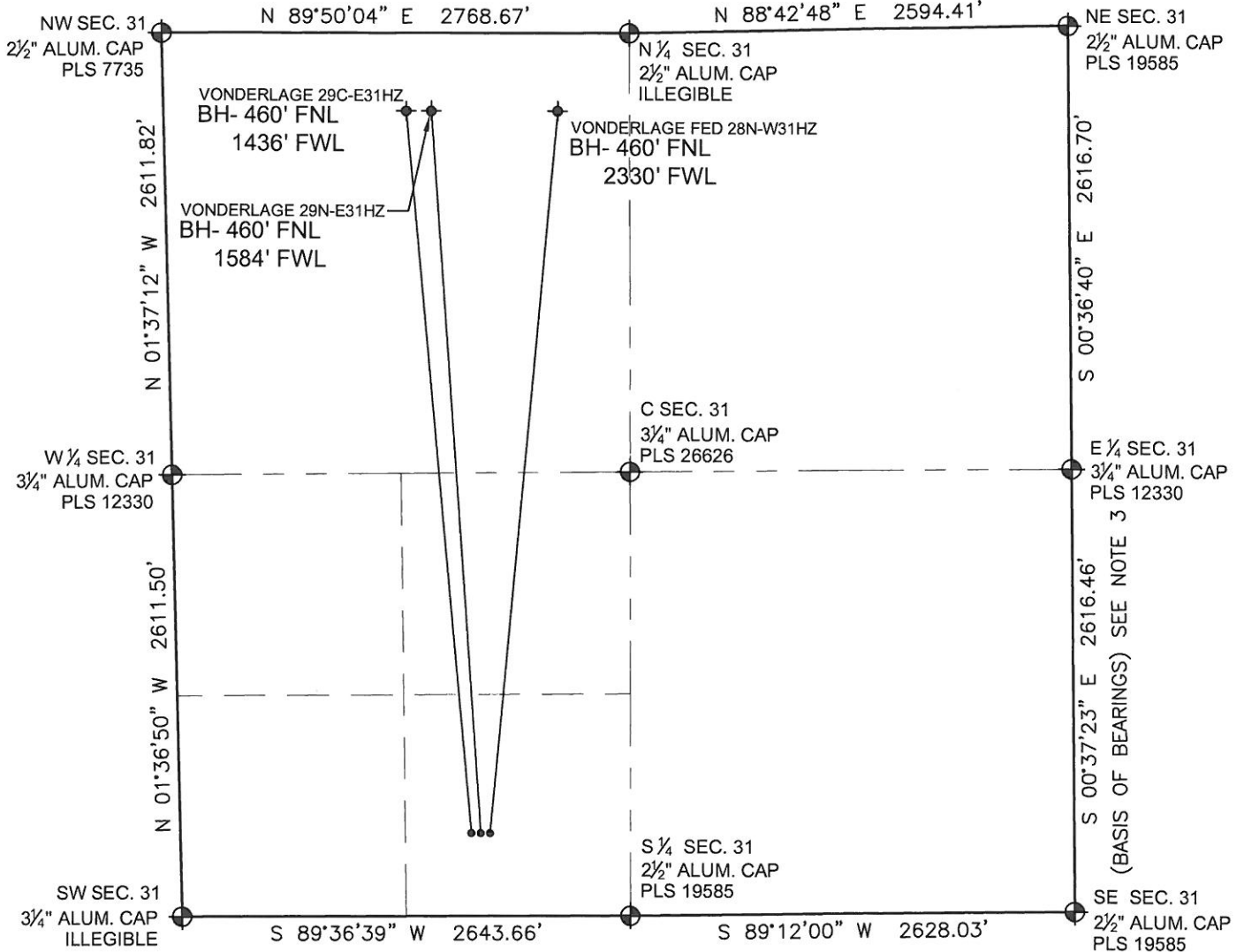


PAD DRAWING: VONDERLAGE 3 PAD

SECTION 31, TOWNSHIP 3 NORTH, RANGE 66 WEST, 6TH P.M.



LEGEND

- ⊗ = EXISTING MONUMENT
- ⊕ = PROPOSED WELL
- ⬤ = BOTTOM HOLE
- ◆ = EXISTING WELL
- BH= BOTTOM HOLE

NOTES:

1. THIS FIELD SURVEY CONFORMS TO THE MINIMUM STANDARDS SET BY THE C.O.G.C.C., RULE NO. 215
2. HORIZONTAL POSITIONS AND ORTHOMETRIC ELEVATIONS SHOWN AT THE WELL HEAD, ARE BASED ON GPS-RTK POSITIONS DERIVED FROM MINIMUM 2-HOUR STATIC OBSERVATIONS CORRECTED BY THE NATIONAL GEODETIC SURVEY ONLINE POSITIONING USER SERVICE, O.P.U.S. DATUM: HORIZONTAL = NAD83/2007, VERTICAL = NAVD88
3. THE BASIS OF BEARINGS ARE STATE PLANE COORDINATE SYSTEM GRID BEARINGS SHOWN HEREON BETWEEN THE DESCRIBED THE MONUMENTS SHOWN HEREON.
4. GRID DISTANCES ARE SHOWN, AS MEASURED IN THE FIELD, WITH TIES TO WELLS MEASURED PERPENDICULAR TO SECTION LINES.

NOTES:

- VONDERLAGE 29C-E31HZ TO BE AT 491' FSL, 1740' FWL. BOTTOM HOLE AT 460' FNL & 1436' FWL.
- VONDERLAGE 29N-E31HZ TO BE AT 491' FSL, 1770' FWL. BOTTOM HOLE AT 460' FNL & 1584' FWL.
- VONDERLAGE FED 28N-W31HZ TO BE AT 491' FSL, 1800' FWL. BOTTOM HOLE AT 460' FNL & 2330' FWL.

PREPARED BY:



KERR-MCGEE OIL & GAS ONSHORE LP

FIELD DATE: 11-03-11	PAD NAME: VONDERLAGE 3 PAD
DRAWING DATE: 11-09-11	SURFACE LOCATION: WELD COUNTY, COLORADO
BY: SMF	SE 1/4 SW 1/4, SEC. 31, T3N, R66W, 6TH P.M.

