

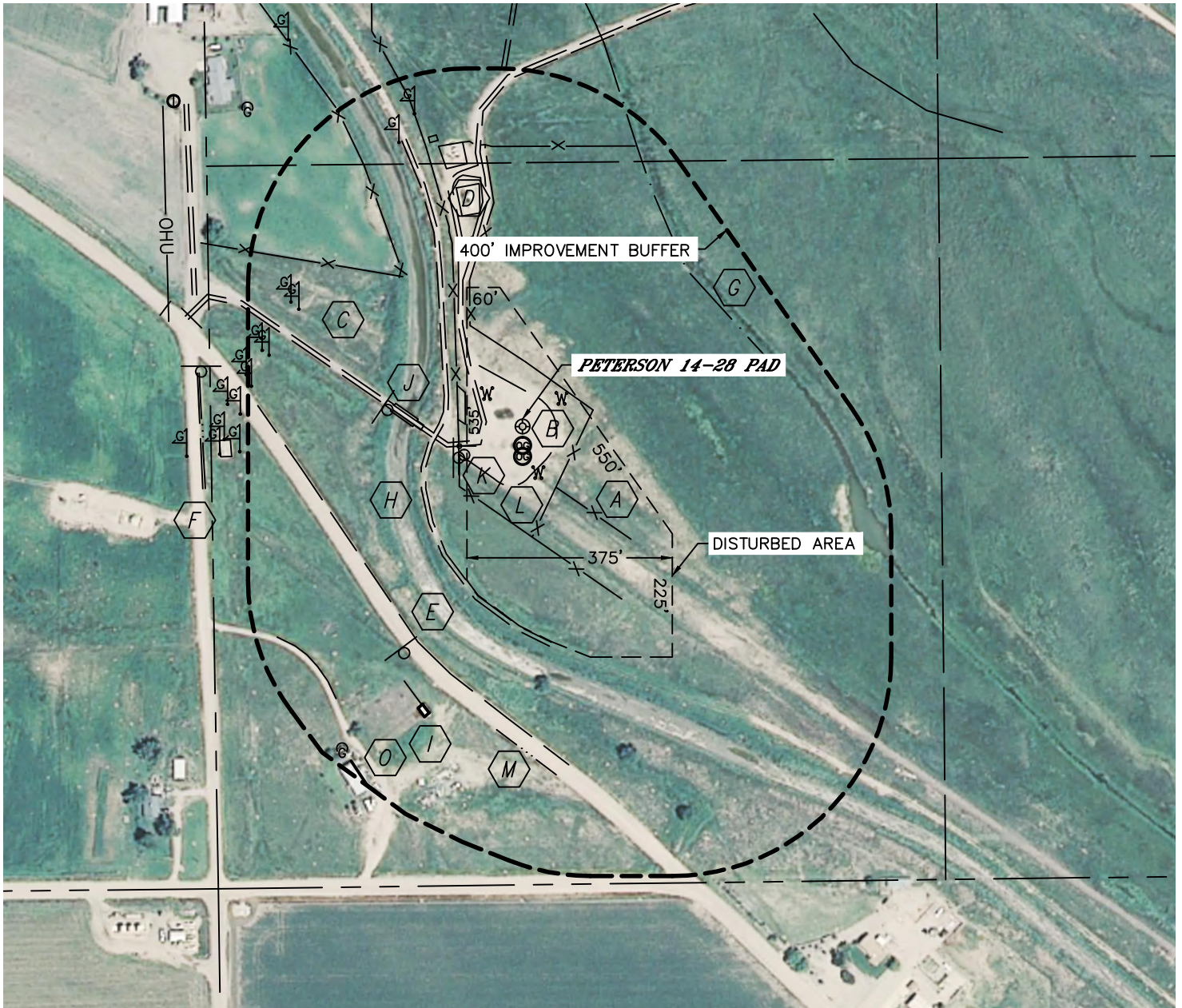


Lat40°, Inc. 1635 Foxtrail Drive, Suite 325 Loveland, CO 970-776-3321

LOCATION DRAWING

PETERSON 14-28 PAD

SECTION: 28
TOWNSHIP: 5N
RANGE: 63W

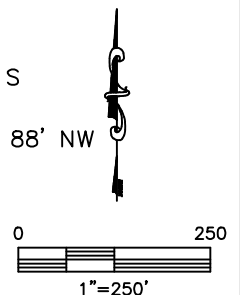


IMPROVEMENTS:

(MEASURED FROM EXISTING PETERSON 14-28 WELL LOCATION)

- | | |
|--|---|
| A FENCE 103' SE, 100' NE, 156' & 513' SW, 118' & 534' W, 350' NW, 512' N | H SIGN 128', 139' & 463' SW, 257' NW |
| B FIELD ROAD 71' & 143' W, 171' & 574' SW | I SHED 539' SW |
| C GAS MARKER 514', 519', 540', 545' & 556' SW, 461', 480', 481', 496', 501', 516' & 566' NW | J BRIDGE 180' W |
| D EXISTING PRODUCTION EQUIPMENT (BONANZA CREEK) 398', 490' & 545' NW, 534' W | K PROPOSED O&G WELL 35' S, 55' S |
| E CR 380 378' SW, CR 52 837' S | L DEADMEN POSTS 89' SE, 87' NE, 88' NW |
| F CR 65 589' W | M BARROW DITCH 556' SW |
| G CANAL 189' NW, 414' NE | O DWELLING 686' SW |

NEAREST: BUILDING (SHED) 539' SW, PUBLIC ROAD 378' SW (CR 380),
ABOVE GROUND UTILITY 641' W, RAILROAD 5280'+, PROPERTY LINE 392' SW



DATE: rev 7/19/12
PROJECT#: 2012053