



July 17, 2012

Department of Natural Resources  
Oil and Gas Conservation Commission  
The Chancery Building  
1120 Lincoln St., Suite 801  
Denver, CO 80203

Re: **30 Day Certification Letter - 318A-e**  
THOMASON 22N-31HZ  
Township 1 North, Range 65 West, Section 06: SE/4SW/4  
Unit Spacing: 01N-65W-Sec 06 W/2; 02N-65W-Sec 31 SW/4  
Weld County, Colorado

Ladies/Gentlemen:

Kerr McGee Oil and Gas Onshore LP ("KMG") hereby certify to the Director that KMG owns one-hundred percent (100%) of the mineral rights in the proposed spacing unit. Therefore, KMG respectfully requests the Director to approve the boundary well.

If you have any questions or issues regarding this permit, please contact Cheryl Light at (720) 929-6461.

Very truly yours,

**KERR-McGEE OIL AND GAS ONSHORE LP**

A handwritten signature in cursive script that reads 'Rebecca Heim'.

**Rebecca Heim**  
**Regulatory Analyst II**

# WELL LOCATION CERTIFICATE: THOMASON 22N-31HZ

SECTION 6, TOWNSHIP 1 NORTH, RANGE 65 WEST, 6TH P.M.

BH- 2180' FSL  
1316' FWL

NW SEC. 6  
3/4" ALUM. CAP  
PLS 30086

CONTINUED ON PAGE 2

N 1/4 SEC. 6  
3/4" ALUM. CAP  
PLS 27269

NE SEC. 6  
3/4" ALUM. CAP  
PLS 13155

SURFACE LOCATION  
GROUND ELEVATION= 5001'  
NAD83  
LATITUDE= 40.073989°  
LONGITUDE= 104.711059°

LATITUDE= 40°04'26.360"  
LONGITUDE= 104°42'39.811"

BOTTOM HOLE LOCATION  
NAD83  
LATITUDE= 40.093465°  
LONGITUDE= 104.711271°

LATITUDE= 40°05'36.474"  
LONGITUDE= 104°42'40.575"

# 6

W 1/4 SEC. 6  
FOUND MONUMENT  
BOX PER RECORD

C 1/4 SEC. 6  
FOUND MONUMENT  
BOX PER RECORD

E 1/4 SEC. 6  
3/4" ALUM. CAP  
PLS 27269

NOTES:  
BH LOCATION PROVIDED BY CLIENT.  
LAND SURFACE USE-RANGELAND  
SEE ATTACHED MAP FOR ADDITIONAL  
IMPROVEMENTS WITHIN 400'.

PDOP= 2.4  
GPS OPERATOR: BEN HARDENBERGH

N 00°12'33" W 2584.15'  
N 00°13'40" W 2598.89'

THOMASON  
22N-31HZ

SW SEC. 6  
2" ALUM. CAP  
PLS 25937

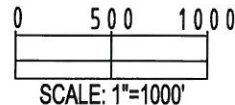
S 1/4 SEC. 6  
3/4" ALUM. CAP  
PLS 25937

SE SEC. 6  
3/4" ALUM. CAP  
PLS 23027

WELL THOMASON 22N-31HZ TO BE LOCATED 275' FSL AND 1419' FWL

### LEGEND

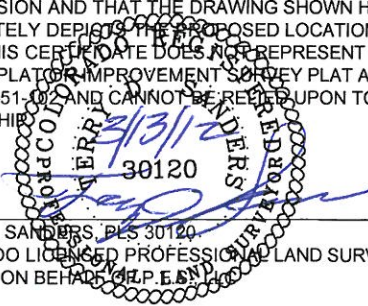
- ⊕ = EXISTING MONUMENT
- ⊙ = PROPOSED WELL
- ⬥ = BOTTOM HOLE
- ◆ = EXISTING WELL
- BH = BOTTOM HOLE



### NOTES:

1. THIS FIELD SURVEY CONFORMS TO THE MINIMUM STANDARDS SET BY THE C.O.G.C.C., RULE NO. 215
2. HORIZONTAL POSITIONS AND ORTHOMETRIC ELEVATIONS SHOWN AT THE WELL HEAD, ARE BASED ON GPS-RTK POSITIONS DERIVED FROM MINIMUM 2-HOUR STATIC OBSERVATIONS CORRECTED BY THE NATIONAL GEODETIC SURVEY ONLINE POSITIONING USER SERVICE, O.P.U.S. DATUM: HORIZONTAL = NAD83/2007, VERTICAL = NAVD88
3. THE BASIS OF BEARINGS ARE STATE PLANE COORDINATE SYSTEM GRID BEARINGS SHOWN HEREON BETWEEN THE DESCRIBED MONUMENTS SHOWN HEREON.
4. GRID DISTANCES ARE SHOWN, AS MEASURED IN THE FIELD, WITH TIES TO WELLS MEASURED PERPENDICULAR TO SECTION LINES.

I, TERRY D. SANDERS, A LICENSED PROFESSIONAL LAND SURVEYOR IN THE STATE OF COLORADO DO HEREBY CERTIFY TO **KERR-MCGEE OIL & GAS ON SHORE LP**, THAT THE SURVEY AND WELL LOCATION CERTIFICATE SHOWN HEREON WERE DONE BY ME OR UNDER MY DIRECT SUPERVISION AND THAT THE DRAWING SHOWN HEREON ACCURATELY DEPICTS THE PROPOSED LOCATION OF THE WELL. THIS CERTIFICATE DOES NOT REPRESENT A LAND SURVEY PLAT OR IMPROVEMENT SURVEY PLAT AS DEFINED BY C.R.S. 38-51-02 AND CANNOT BE RELIED UPON TO DETERMINE OWNERSHIP.



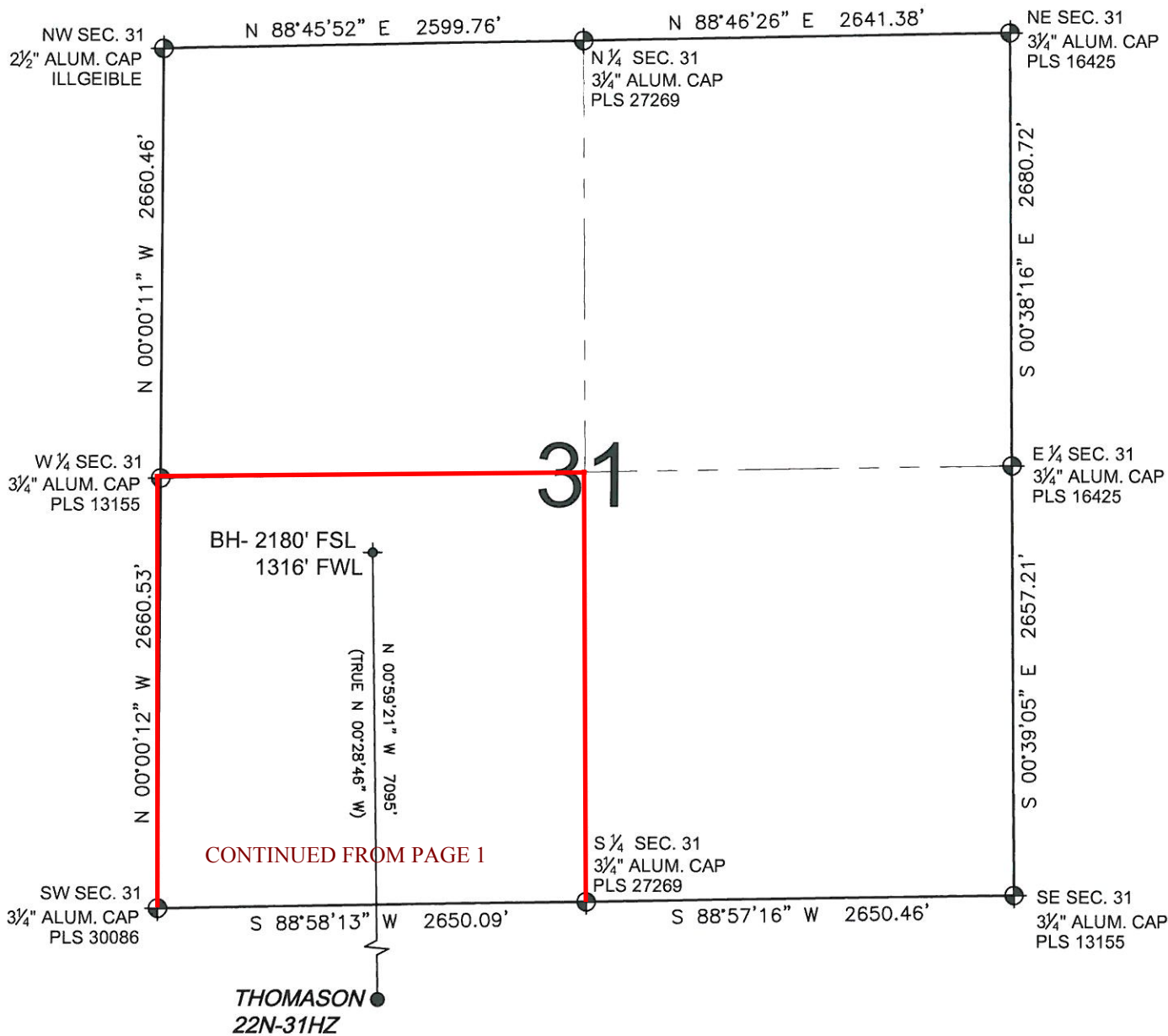
TERRY D. SANDERS, PLS 30120  
COLORADO LICENSED PROFESSIONAL LAND SURVEYOR  
FOR AND ON BEHALF OF KERR-MCGEE OIL & GAS ON SHORE LP

SHEET 1 OF 2

PREPARED BY:  PFS Petroleum Field Services, LLC 1801 W. 13th Ave. Denver, CO 80204	FIELD DATE: 03-05-12	SURFACE LOCATION: SE 1/4 SW 1/4, SEC. 6, T1N, R65W, 6TH P.M. WELD COUNTY, COLORADO
	DRAWING DATE: 03-10-12	
	BY: SMF	

NOTICE: ACCORDING TO COLORADO LAW YOU MUST COMMENCE ANY LEGAL ACTION BASED UPON ANY DEFECT IN THIS SURVEY WITHIN THREE YEARS AFTER YOU FIRST DISCOVER SUCH DEFECT. IN NO EVENT MAY ANY ACTION BASED UPON ANY DEFECT IN THIS SURVEY BE COMMENCED MORE THAN TEN YEARS FROM THIS SAID DATE OF THIS CERTIFICATION SHOWN HEREON.

# WELL LOCATION CERTIFICATE: THOMASON 22N-31HZ

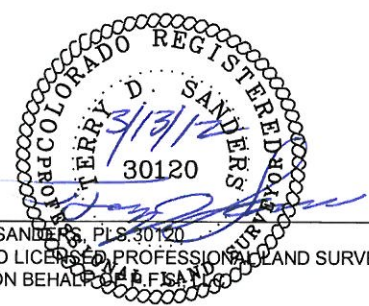
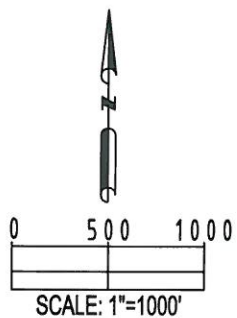


CONTINUED FROM PAGE 1

### LEGEND

- ⊕ = EXISTING MONUMENT
- ⬤ = PROPOSED WELL
- ⬥ = EXISTING WELL
- BH = BOTTOM HOLE
- ◆ = BOTTOM HOLE

- NOTES:**
1. THIS FIELD SURVEY CONFORMS TO THE MINIMUM STANDARDS SET BY THE C.O.G.C.C., RULE NO. 215
  2. HORIZONTAL POSITIONS AND ORTHOMETRIC ELEVATIONS SHOWN AT THE WELL HEAD, ARE BASED ON GPS-RTK POSITIONS DERIVED FROM MINIMUM 2-HOUR STATIC OBSERVATIONS CORRECTED BY THE NATIONAL GEODETIC SURVEY ONLINE POSITIONING USER SERVICE, O.P.U.S. DATUM: HORIZONTAL = NAD83/2007, VERTICAL = NAVD88
  3. THE BASIS OF BEARINGS ARE STATE PLANE COORDINATE SYSTEM GRID BEARINGS SHOWN HEREON BETWEEN THE DESCRIBED THE MONUMENTS SHOWN HEREON.
  4. GRID DISTANCES ARE SHOWN, AS MEASURED IN THE FIELD, WITH TIES TO WELLS MEASURED PERPENDICULAR TO SECTION LINES.



TERRY D. SANDERS, PLS 30120  
 COLORADO LICENSED PROFESSIONAL LAND SURVEYOR  
 FOR AND ON BEHALF OF P.F.S.A. INC.

SHEET 2 OF 2

PREPARED BY:  1801 W. 13th Ave. Denver, CO 80204	FIELD DATE: 03-05-12	SURFACE LOCATION: SE 1/4 SW 1/4,
	DRAWING DATE: 03-10-12	SEC. 6, T1N, R65W, 6TH P.M.
	BY: SMF	WELD COUNTY, COLORADO

NOTICE: ACCORDING TO COLORADO LAW YOU MUST COMMENCE ANY LEGAL ACTION BASED UPON ANY DEFECT IN THIS SURVEY WITHIN THREE YEARS AFTER YOU FIRST DISCOVER SUCH DEFECT. IN NO EVENT MAY ANY ACTION BASED UPON ANY DEFECT IN THIS SURVEY BE COMMENCED MORE THAN TEN YEARS FROM THIS SAID DATE OF THIS CERTIFICATION SHOWN HEREON.