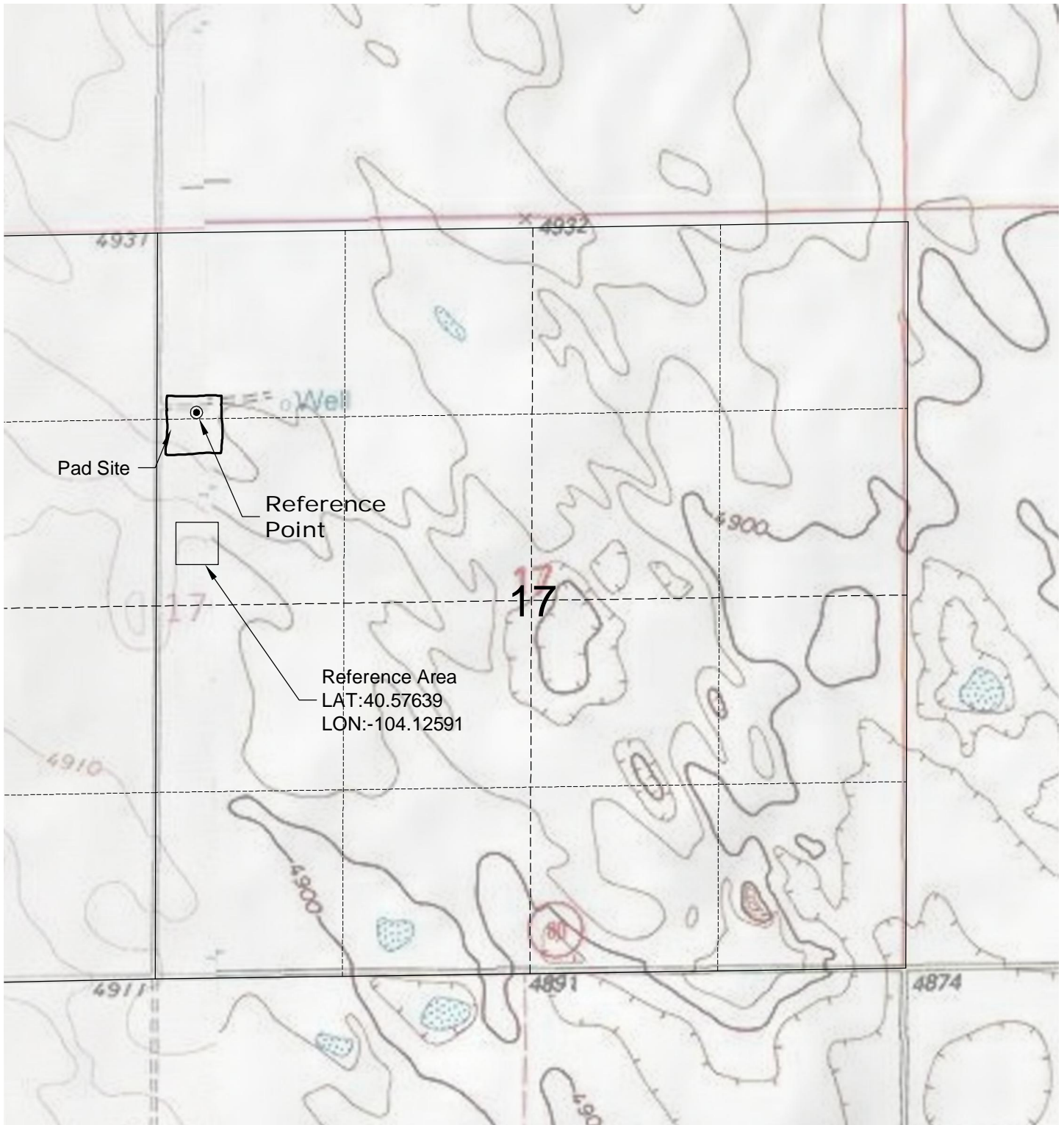


REFERENCE AREA MAP



DWG: G:\GEO\SURV\Well\North\Carrizo 110004\Well\Plate\Slick Rock 17-11-7-60\Slick Rock 17-11-7-60 F2A.R1.dwg USER: Administrator DATE: Jul 23, 2012 4:55pm

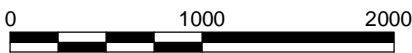
Pad Site

Reference Point

Reference Area
LAT:40.57639
LON:-104.12591



North



Graphic Scale in Feet
1" = 1000'

7/23/12



LAND SURVEYING AND MAPPING
LAFAYETTE - WINTER PARK
Ph 303 666 0379 Fx 303 665 6320

CARRIZO OIL & GAS, INC
SLICK ROCK 17-11-7-60 PAD

NW1/4 NW1/4 SEC. 17 T7N R60W
6th PM WELD COUNTY COLORADO