
WPX ENERGY ROCKY MOUNTAIN LLC-EBUS

**KP 423-8
MAMM CREEK
Garfield County , Colorado**

Cement Surface Casing
07-Apr-2012

Post Job Report

The Road to Excellence Starts with Safety

Sold To #: 300721	Ship To #: 2920027	Quote #:	Sales Order #: 9371334
Customer: WPX ENERGY ROCKY MOUNTAIN LLC-EBUS	Customer Rep: Hudson, Matt		
Well Name: KP	Well #: 423-8	API/UWI #: 05-045-20996	
Field: MAMM CREEK	City (SAP): Silt	County/Parish: Garfield	State: Colorado
Lat: N 39.536 deg. OR N 39 deg. 32 min. 7.919 secs.	Long: W 107.58 deg. OR W -108 deg. 25 min. 12.58 secs.		
Contractor: NABORS 574	Rig/Platform Name/Num: NAB 574		
Job Purpose: Cement Surface Casing			
Well Type: Development Well	Job Type: Cement Surface Casing		
Sales Person: MAYO, MARK	Srvc Supervisor: SMITH, CHRISTOPHER	MBU ID Emp #: 452619	

Job Personnel

HES Emp Name	Exp Hrs	Emp #	HES Emp Name	Exp Hrs	Emp #	HES Emp Name	Exp Hrs	Emp #
BANKS, BRENT A	0.0	371353	CASTILLO, FRANCISCO P	0.0	513620	SIMINEO, JEROD M	0.0	479954
SMITH, CHRISTOPHER Scott	0.0	452619						

Equipment

HES Unit #	Distance-1 way	HES Unit #	Distance-1 way	HES Unit #	Distance-1 way	HES Unit #	Distance-1 way
10567589C	60 mile	10722398	60 mile	10783493	60 mile	10822007	60 mile
11139330	60 mile	11259884	60 mile	11808829	60 mile		

Job Hours

Date	On Location Hours	Operating Hours	Date	On Location Hours	Operating Hours	Date	On Location Hours	Operating Hours

TOTAL	Total is the sum of each column separately							
-------	--	--	--	--	--	--	--	--

Job

Formation Name	Top	Bottom	Called Out	Date	Time	Time Zone
Formation Depth (MD)			On Location	07 - Apr - 2012	15:00	MST
Form Type	BHST		Job Started	07 - Apr - 2012	18:30	MST
Job depth MD	1365. m	Job Depth TVD	Job Started	07 - Apr - 2012	20:11	MST
Water Depth		Wk Ht Above Floor	Job Completed	07 - Apr - 2012	21:14	MST
Perforation Depth (MD)	From	To	Departed Loc	07 - Apr - 2012	22:00	MST

Well Data

Description	New / Used	Max pressure MPa	Size mm	ID mm	Weight kg/m	Thread	Grade	Top MD m	Bottom MD m	Top TVD m	Bottom TVD m
-------------	------------	------------------	---------	-------	-------------	--------	-------	----------	-------------	-----------	--------------

Sales/Rental/3rd Party (HES)

Description	Qty	Qty uom	Depth	Supplier
PLUG,CMTG,TOP,9 5/8,HWE,8.16 MIN/9.06 MA	1	EA		

Tools and Accessories

Type	Size	Qty	Make	Depth	Type	Size	Qty	Make	Depth	Type	Size	Qty	Make
Guide Shoe					Packer					Top Plug			
Float Shoe					Bridge Plug					Bottom Plug			
Float Collar					Retainer					SSR plug set			
Insert Float										Plug Container			
Stage Tool										Centralizers			

Miscellaneous Materials

Gelling Agt	Conc	Surfactant	Conc	Acid Type	Qty	Conc	%
Treatment Fld	Conc	Inhibitor	Conc	Sand Type	Size	Qty	

Fluid Data

Fluid Data									
Stage/Plug #: 1									
Fluid #	Stage Type	Fluid Name	Qty	Qty uom	Mixing Density kg/m3	Yield m3/sk	Mix Fluid m3/tonne	Rate m3/min	Total Mix Fluid m3/tonne

1	Fresh Water		20.00	bbl	8.33	.0	.0	.0	
2	Lead Cement	VERSACEM (TM) SYSTEM (452010)	200.0	sacks	12.3	2.38	13.75		13.75
3	Tail Cement	VERSACEM (TM) SYSTEM (452010)	160.0	sacks	12.8	2.11	11.75		11.75
4	Displacement Fluid		102.00	bbl	8.34	.0	.0	.0	
Calculated Values		Pressures		Volumes					
Displacement		Shut In: Instant		Lost Returns		Cement Slurry		Pad	
Top Of Cement		5 Min		Cement Returns		Actual Displacement		Treatment	
Frac Gradient		15 Min		Spacers		Load and Breakdown		Total Job	
Rates									
Circulating		Mixing		Displacement		Avg. Job			
Cement Left In Pipe		Amount	0 ft	Reason	Shoe Joint				
Frac Ring # 1 @	ID	Frac ring # 2 @	ID	Frac Ring # 3 @	ID	Frac Ring # 4 @	ID		
The Information Stated Herein Is Correct				Customer Representative Signature					

The Road to Excellence Starts with Safety

Sold To #: 300721		Ship To #: 2920027		Quote #:		Sales Order #: 9371334	
Customer: WPX ENERGY ROCKY MOUNTAIN LLC-EBUS				Customer Rep: Hudson, Matt			
Well Name: KP			Well #: 423-8			API/UWI #: 05-045-20996	
Field: MAMM CREEK		City (SAP): Silt		County/Parish: Garfield		State: Colorado	
Legal Description:							
Lat: N 39.536 deg. OR N 39 deg. 32 min. 7.919 secs.				Long: W 107.58 deg. OR W -108 deg. 25 min. 12.58 secs.			
Contractor: NABORS 574			Rig/Platform Name/Num: NAB 574				
Job Purpose: Cement Surface Casing						Ticket Amount:	
Well Type: Development Well			Job Type: Cement Surface Casing				
Sales Person: MAYO, MARK			Srv Supervisor: SMITH, CHRISTOPHER			MBU ID Emp #: 452619	

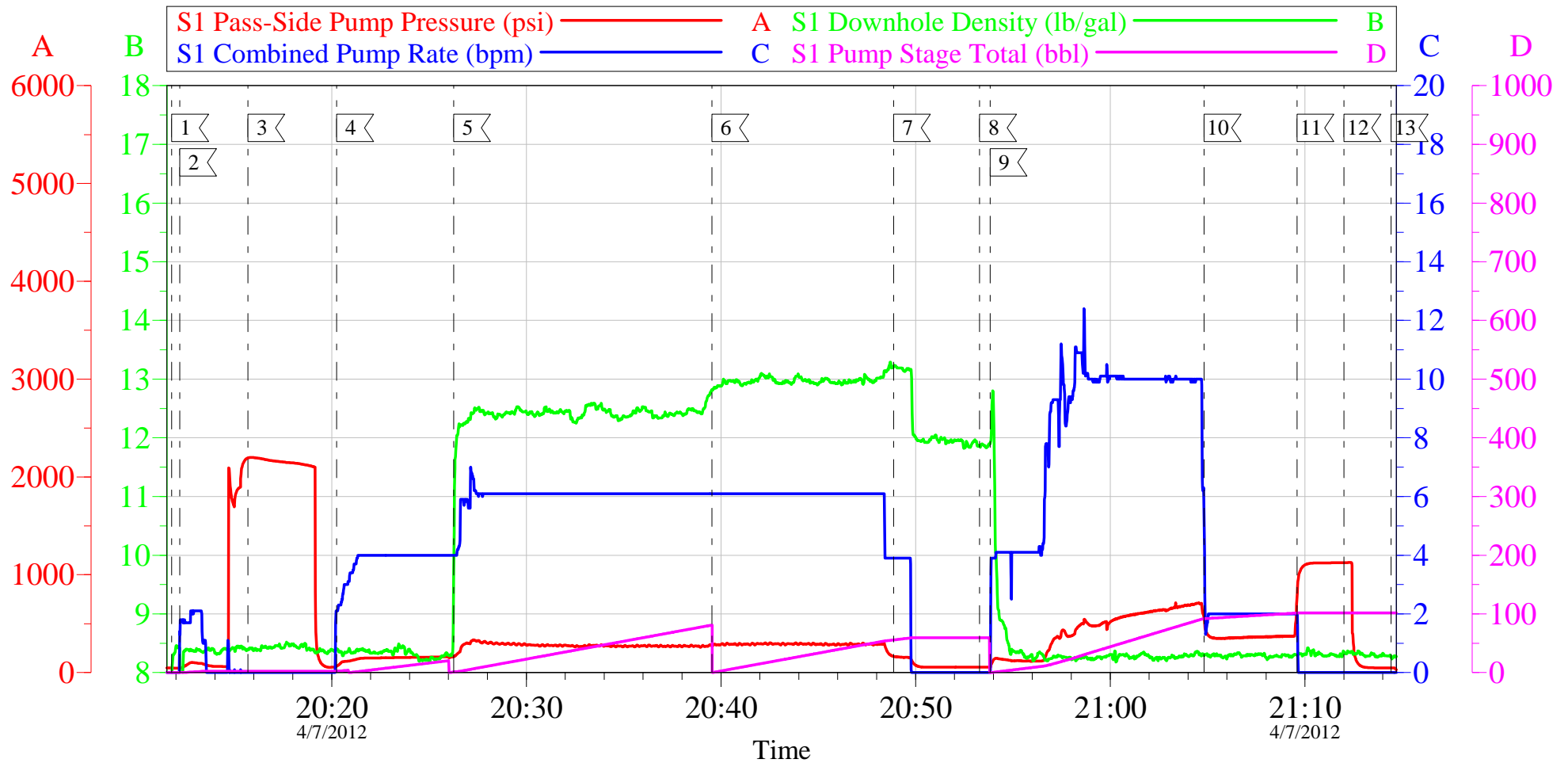
Activity Description	Date/Time	Cht #	Rate m3/min	Volume m3		Pressure MPa		Comments
				Stage	Total	Tubing	Casing	
Pre-Convoy Safety Meeting	04/07/2012 17:00							ALL HES PERSONEL
Crew Leave Yard	04/07/2012 17:15							
Arrive At Loc	04/07/2012 18:30							RIG RUNNING CASEING.
Assessment Of Location Safety Meeting	04/07/2012 18:45							ALL HES PERSONEL
Rig-Up Equipment	04/07/2012 19:00							
Pre-Job Safety Meeting	04/07/2012 20:00							ALL HES PERSONEL AND RIG CREW
Start Job	04/07/2012 20:11							TD 1365', TP 1350', SJ 44', OH 13.5", CSG 9.625" 32.3# J-55 , MUD 9.3PPG.
Other	04/07/2012 20:12		2	2			95.0	FILL LINES
Pressure Test	04/07/2012 20:15		0.5	0.5				ALL LINES HELD PRESSURE @ 2199 PSI
Pump Spacer 1	04/07/2012 20:20		4	20			160.0	FRESH WATER
Pump Lead Cement	04/07/2012 20:26		6	84			285.0	200 SKS, 12.3 PPG, 2.38 FT3/SK, 13.75 GAL/SK, SET UP TIME 2:38 @ 70 BC.
Pump Tail Cement	04/07/2012 20:39		6	60			295.0	146 SKS, 12.8 PPG, 2.07 FT3/ SK, 11.67 GAL/SK, SET UP TIME 1:51 @ 70 BC
Shutdown	04/07/2012 20:48							
Drop Top Plug	04/07/2012 20:53							PLUG WENT

Cementing Job Log

Activity Description	Date/Time	Cht #	Rate m3/min	Volume m3		Pressure MPa		Comments
				Stage	Total	Tubing	Casing	
Pump Displacement	04/07/2012 20:53		10	92			708.0	FRESH WATER, WASH UP ON TOP OF PLUG.
Slow Rate	04/07/2012 21:00		2	10			375.0	
Bump Plug	04/07/2012 21:09						1100.0	PLUG BUMPED
Check Floats	04/07/2012 21:12							FLOATS HELD
End Job	04/07/2012 21:14							GOOD CIRCULATION THROUGHOUT JOB, 20 BBLs OF CEMENT TO SURFACE, PIPE WAS NOT MOVED DURING THE JOB.
Post-Job Safety Meeting (Pre Rig-Down)	04/07/2012 21:20							ALL HES PERSONEL
Rig-Down Completed	04/07/2012 21:30							
Depart Location Safety Meeting	04/07/2012 21:50							ALL HES PERSONEL
Crew Leave Location	04/07/2012 22:00							
Other	04/07/2012 22:00							THANK YOU FOR CHOOSING HALLIBURTON, CHRIS SMITH AND CREW

WILLIAMS KP 423-8

9.625" SURFACE



Local Event Log					
1	START JOB	20:11:47	2	FILL LINES	20:12:11
3	TEST LINES	20:15:42	4	H2O SPACER	20:20:15
5	LEAD CEMENT	20:26:16	6	TAIL CEMENT	20:39:32
7	SHUTDOWN	20:48:52	8	DROP PLUG	20:53:17
9	H2O DISPLACEMENT	20:53:50	10	SLOW RATE	21:04:49
11	BUMP PLUG	21:09:36	12	CHECK FLOATS	21:12:01
13	END JOB	21:14:26			

Customer: WPX ENERGY ROCKY MOUNTAIN LLC-EBUS
 Well Description: KP 423-8
 Company Rep: M.HUTSON

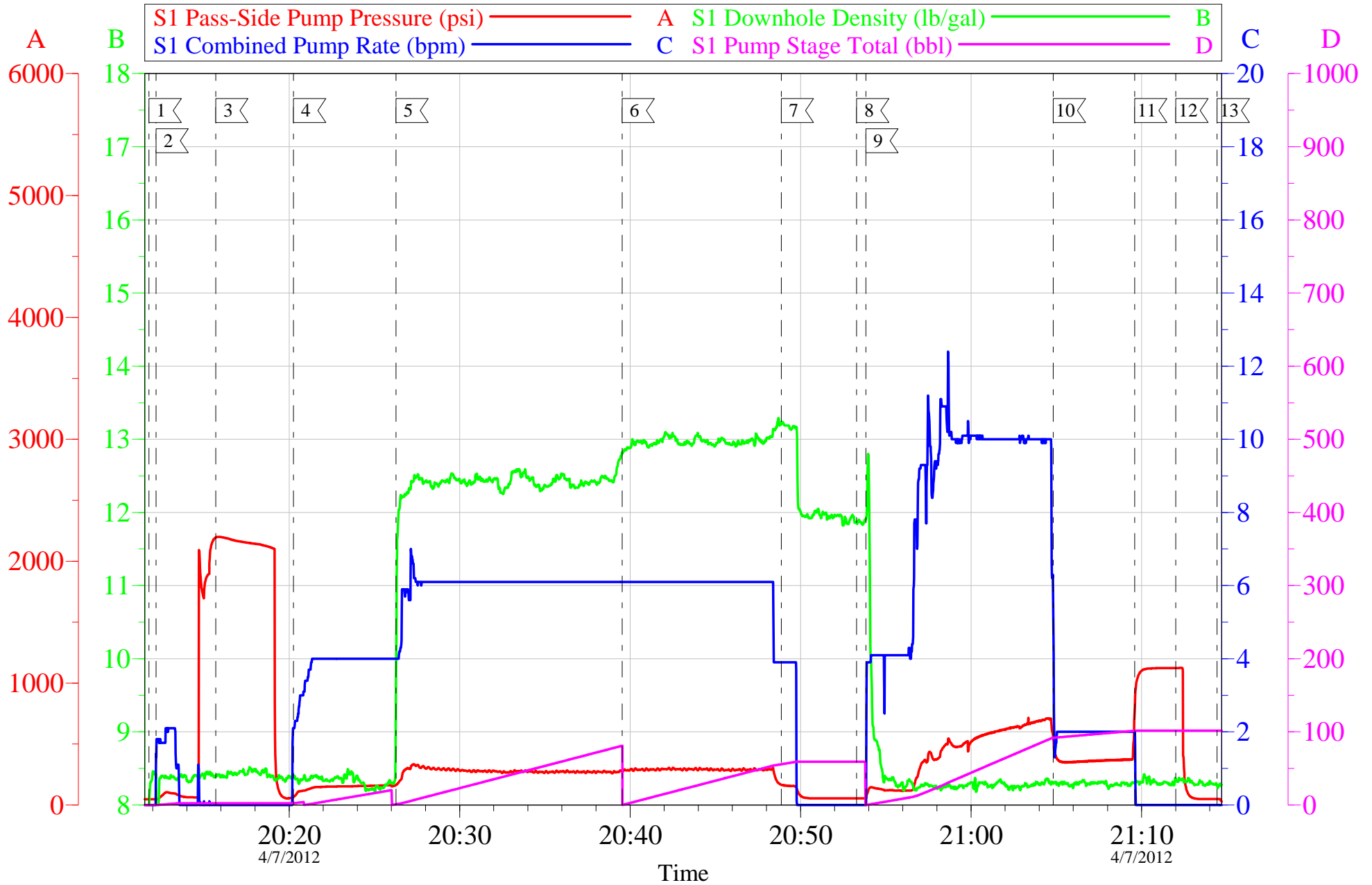
Job Date: 07-Apr-2012
 Job Type: SURFACE
 Cement Supervisor: C.SMITH

Sales Order #: 9371334
 ADC Used: YES
 Elite #3: L.CASTILLO

OptiCem v6.4.10
 07-Apr-12 21:21

WILLIAMS KP 423-8

9.625" SURFACE



Customer: WPX ENERGY ROCKY MOUNTAIN LLC-EBUS
 Well Description: KP 423-8
 Company Rep: M.HUTSON

Job Date: 07-Apr-2012
 Job Type: SURFACE
 Cement Supervisor: C.SMITH

Sales Order #: 9371334
 ADC Used: YES
 Elite #3: L.CASTILLO

OptiCem v6.4.10
 07-Apr-12 21:21

HALLIBURTON

Water Analysis Report

Company: WILLIAMS

Submitted by: Chris Smith

Attention: J.Trout

Lease NAB 574

Well # KP423-8

Date: 04.07.2012

Date Rec.:

S.O.# 9371334

Job Type: SURFACE

Specific Gravity	<i>MAX</i>	1
pH	<i>8</i>	7
Potassium (K)	<i>5000</i>	220 Mg / L
Hrdness	<i>500</i>	0 Mg / L
Iron (FE2)	<i>300</i>	200 Mg / L
Chlorides (Cl)	<i>3000</i>	0 Mg / L
Sulfates (SO ₄)	<i>1500</i>	<200 Mg / L
Temp	<i>40-80</i>	60 Deg
Total Dissolved Solids		380 Mg / L

Respectfully: Chris Smith

Title: CEMENTING SUPERVISOR

Location: Grand Junction, CO

NOTICE: This report is limited to the described sample tested. Any person using or relying on this report agrees that Halliburton shall not be liable for any loss or damage whether due to act or omission resulting from such report or it

Sales Order #: 9371334	Line Item: 10	Survey Conducted Date: 4/7/2012
Customer: WPX ENERGY ROCKY MOUNTAIN LLC-EBUS		Job Type (BOM): CMT SURFACE CASING BOM
Customer Representative: MATT HUDSON		API / UWI: (leave blank if unknown) 05-045-20996
Well Name: KP		Well Number: 423-8
Well Type: Development Well	Well Country: United States of America	
H2S Present:	Well State: Colorado	Well County: Garfield

Dear Customer,

We hope that you were satisfied with the service quality of this job performed by Halliburton. It is the aim of our management and service personnel to deliver equipment and service of a standard unmatched in the service sector of the energy industry.

Please take the time to let us know if our performance met with your satisfaction. Please be as critical as possible to ensure we constantly improve our service. Your comments are of great value to us and are intended for the exclusive use of Halliburton.

CUSTOMER SATISFACTION SURVEY

CATEGORY	CUSTOMER SATISFACTION RESPONSE	
Survey Conducted Date	The date the survey was conducted	4/7/2012
Survey Interviewer	The survey interviewer is the person who initiated the survey.	CHRISTOPHER SMITH (HB20137)
Customer Participation	Did the customer participate in this survey? (Y/N)	Yes
Customer Representative	Enter the Customer representative name	MATT HUDSON
HSE	Was our HSE performance satisfactory? Circle Y or N	Yes
Equipment	Were you satisfied with our Equipment? Circle Y or N	Yes
Personnel	Were you satisfied with our people? Circle Y or N	Yes
Customer Comment	Customer's Comment	

CUSTOMER SIGNATURE

Sales Order #: 9371334	Line Item: 10	Survey Conducted Date: 4/7/2012
Customer: WPX ENERGY ROCKY MOUNTAIN LLC-EBUS		Job Type (BOM): CMT SURFACE CASING BOM
Customer Representative: MATT HUDSON		API / UWI: (leave blank if unknown) 05-045-20996
Well Name: KP		Well Number: 423-8
Well Type: Development Well	Well Country: United States of America	
H2S Present:	Well State: Colorado	Well County: Garfield

KEY PERFORMANCE INDICATORS

General	
Survey Conducted Date The date the survey was conducted	4/7/2012

Cementing KPI Survey	
Type of Job Select the type of job. (Cementing or Non-Cementing)	0
Select the Maximum Deviation range for this Job What is the highest deviation for the job you just completed? This may not be the maximum well deviation.	Vertical
Total Operating Time (hours) Total Operating Hours Including Rig-up, Pumping, Rig-down. Enter in decimal format.	2
HSE Incident, Accident, Injury HSE Incident, Accident, Injury. This should be recordable incidents only.	No
Was the job purpose achieved? Was the job delivered correctly as per customer agreed design?	Yes
Operating Hours (Pumping Hours) Total number of hours pumping fluid on this job. Enter in decimal format.	1.5
Customer Non-Productive Rig Time (hrs) Lost time due to Halliburton in the start, execution, or completion of an ordered service or product, or delays in a follow-on service. Enter in decimal format. 0 if none.	0
Type of Rig Classification Job Was Performed Type Of Rig (classification) Job Was Performed On	Drilling Rig (Portable)
Number Of JSAs Performed Number Of Jsas Performed	7
Number of Unplanned Shutdowns Unplanned shutdown is when injection stops for any period of time.	0
Was this a Primary Cement Job (Yes / No)	Yes

Sales Order #: 9371334	Line Item: 10	Survey Conducted Date: 4/7/2012
Customer: WPX ENERGY ROCKY MOUNTAIN LLC-EBUS		Job Type (BOM): CMT SURFACE CASING BOM
Customer Representative: MATT HUDSON		API / UWI: (leave blank if unknown) 05-045-20996
Well Name: KP		Well Number: 423-8
Well Type: Development Well	Well Country: United States of America	
H2S Present:	Well State: Colorado	Well County: Garfield

Primary Cement Job= Casing job, Liner job, or Tie-back job.	
Did We Run Wiper Plugs? Did We Run Top And Bottom Casing Wiper Plugs?	Top
Mixing Density of Job Stayed in Designed Density Range (0-100%) Density Range defined as +/- .20 ppg. Calculation: Total BBLs cement mixed at designed density divided by total BBLs of cement multiplied by 100	97
Was Automated Density Control Used? Was Automated Density Control (ADC) Used ?	Yes
Pump Rate (percent) of Job Stayed At Designed Pump Rate Pump Rate range defined as +/- 1bbl/min. Calculation: Total BBLs of fluid pumped at the designed rate divided by Total BBLs of fluid pumped, multiplied by 100	95
Nbr of Remedial Sqz Jobs Rqd - Competition Number Of Remedial Squeeze Jobs Required After Primary Job Performed By Competition	0
Nbr of Remedial Plug Jobs Rqd - HES Number Of Remedial Plug Jobs Needed After Primary Plug Pumped By HES	0
Nbr of Remedial Sqz Jobs Rqd - HES Number Of Remedial Squeeze Jobs Required After Primary Job Performed By HES	0