



API/UWI	E/W Dist (ft)	E/W Ref	N/S Dist (ft)	N/S Ref	Location	Field Name	County	State
05071074470000	1,607.0	FEL	204.0	FNL	T35S-R67W-S04	Purgatoire River	Las Animas	Colorado
Well Configuration Type	XTO ID B	Orig KB Elev (ft)	Gr Elev (ft)	KB-Grd (ft)	Spud Date	PBTD (All) (ftKB)	Total Depth (ftKB)	Method Of Production
Vertical	94628	7,979.00	7,979.00	0.00	8/2/2001	Original Hole - 2401.0	2,455.0	Beam

Well Config: Vertical - Original Hole. 7/16/2012 1:59:55 PM

PBTD,	
2,401	
TD, 2,455	

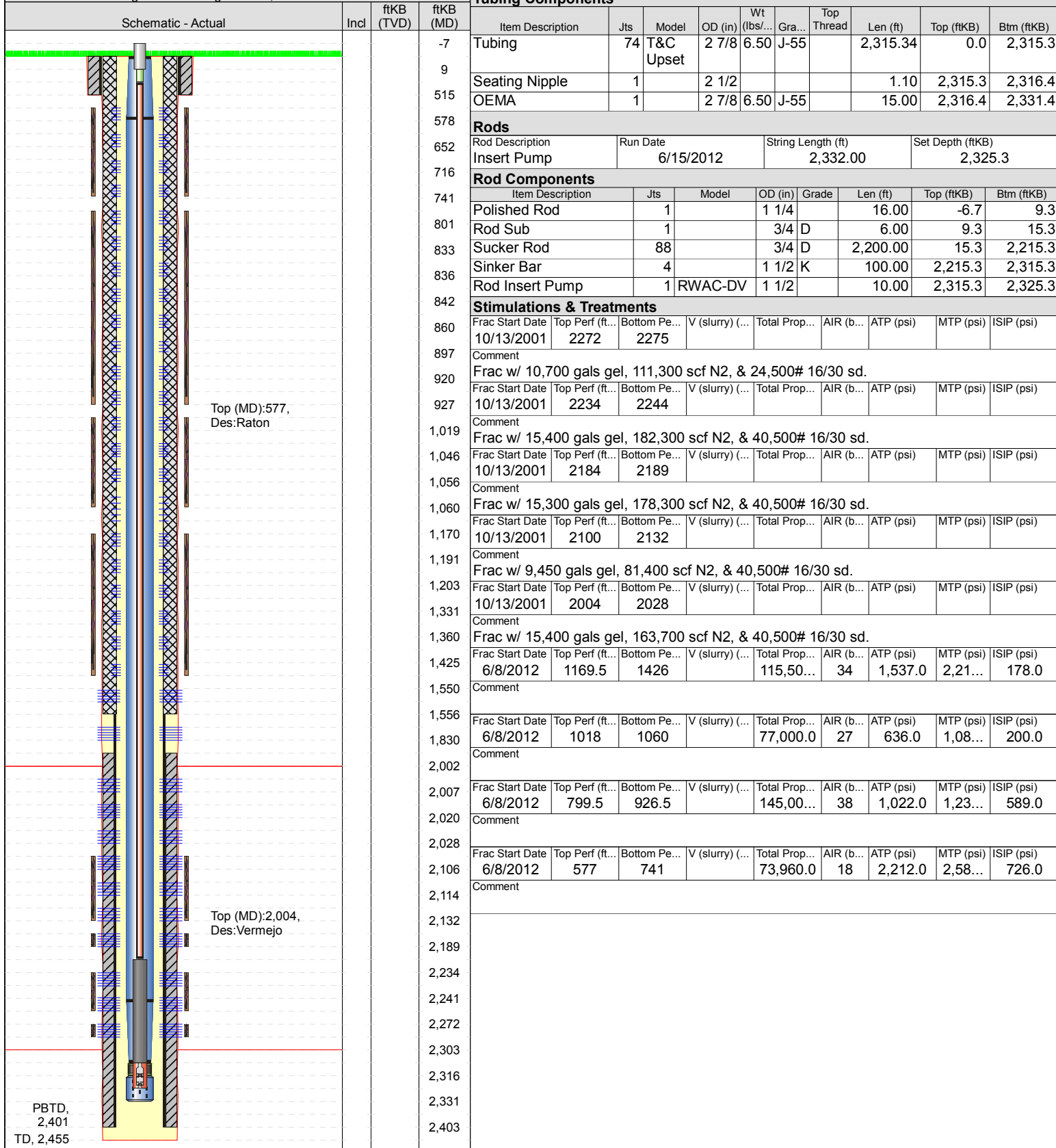


# XTO - Wellbore Diagram

Well Name: Hill Ranch 04-02V

API/UWI 05071074470000	E/W Dist (ft) 1,607.0	E/W Ref FEL	N/S Dist (ft) 204.0	N/S Ref FNL	Location T35S-R67W-S04	Field Name Purgatoire River	County Las Animas	State Colorado
Well Configuration Type Vertical	XTO ID B 94628	Orig KB Elev (ft) 7,979.00	Gr Elev (ft) 7,979.00	KB-Grd (ft) 0.00	Spud Date 8/2/2001	PBTD (All) (ftKB) Original Hole - 2401.0	Total Depth (ftKB) 2,455.0	Method Of Production Beam

Well Config: Vertical - Original Hole, 7/16/2012 1:59:55 PM



## Tubing Components

Item Description	Jts	Model	OD (in)	Wt (lbs/...)	Gra...	Top Thread	Len (ft)	Top (ftKB)	Btm (ftKB)
Tubing	74	T&C Upset	2 7/8	6.50	J-55		2,315.34	0.0	2,315.3
Seating Nipple	1		2 1/2				1.10	2,315.3	2,316.4
OEMA	1		2 7/8	6.50	J-55		15.00	2,316.4	2,331.4

## Rods

Rod Description	Run Date	String Length (ft)	Set Depth (ftKB)
Insert Pump	6/15/2012	2,332.00	2,325.3

## Rod Components

Item Description	Jts	Model	OD (in)	Grade	Len (ft)	Top (ftKB)	Btm (ftKB)
Polished Rod	1		1 1/4		16.00	-6.7	9.3
Rod Sub	1		3/4	D	6.00	9.3	15.3
Sucker Rod	88		3/4	D	2,200.00	15.3	2,215.3
Sinker Bar	4		1 1/2	K	100.00	2,215.3	2,315.3
Rod Insert Pump	1	RWAC-DV	1 1/2		10.00	2,315.3	2,325.3

## Stimulations & Treatments

Frac Start Date	Top Perf (ft...)	Bottom Pe...	V (slurry) (...)	Total Prop...	AIR (b...	ATP (psi)	MTP (psi)	ISIP (psi)
10/13/2001	2272	2275						
Comment								
Frac w/ 10,700 gals gel, 111,300 scf N2, & 24,500# 16/30 sd.								
10/13/2001	2234	2244						
Comment								
Frac w/ 15,400 gals gel, 182,300 scf N2, & 40,500# 16/30 sd.								
10/13/2001	2184	2189						
Comment								
Frac w/ 15,300 gals gel, 178,300 scf N2, & 40,500# 16/30 sd.								
10/13/2001	2100	2132						
Comment								
Frac w/ 9,450 gals gel, 81,400 scf N2, & 40,500# 16/30 sd.								
10/13/2001	2004	2028						
Comment								
Frac w/ 15,400 gals gel, 163,700 scf N2, & 40,500# 16/30 sd.								
6/8/2012	1169.5	1426		115,50...	34	1,537.0	2,21...	178.0
Comment								
Frac w/ 15,400 gals gel, 163,700 scf N2, & 40,500# 16/30 sd.								
6/8/2012	1018	1060		77,000.0	27	636.0	1,08...	200.0
Comment								
Frac w/ 15,400 gals gel, 163,700 scf N2, & 40,500# 16/30 sd.								
6/8/2012	799.5	926.5		145,00...	38	1,022.0	1,23...	589.0
Comment								
Frac w/ 15,400 gals gel, 163,700 scf N2, & 40,500# 16/30 sd.								
6/8/2012	577	741		73,960.0	18	2,212.0	2,58...	726.0
Comment								