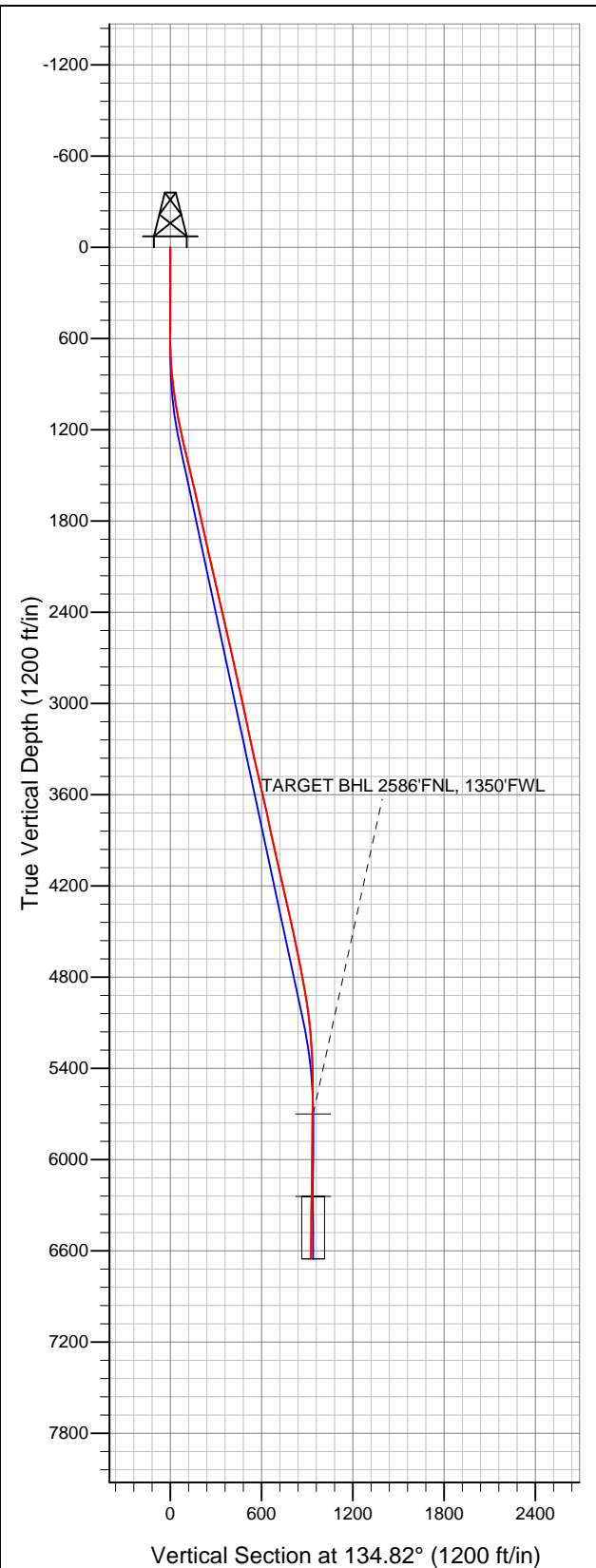


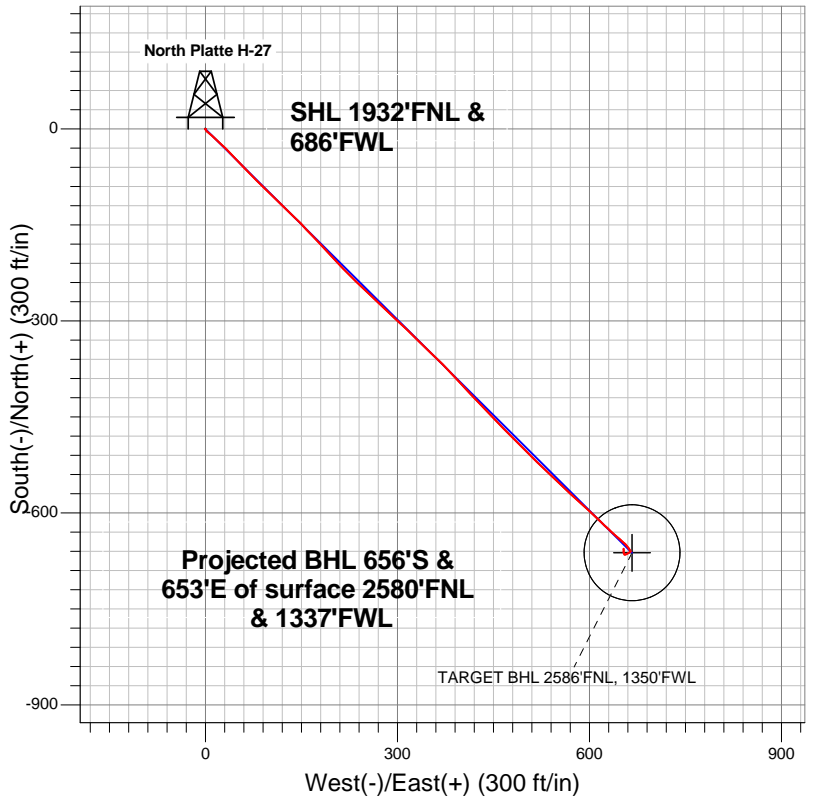
**Well Name: North Platte H-27**

Surface Location: Perkins 12-27 Pad Sec.27-T5N-R63W  
North American Datum 1983 US State Plane 1983Colorado Northern Zone  
Ground Elevation: 4542.0

+N/-S	+E/-W	Northing	Easting	Latitude	Longitude	Slot
0.0	0.0	1380298.16	3298501.99	40.372370	-104.428630	
Original Well Elev			WELL @ 4557.0ft (Original Well Elev)			



**BONANZA CREEK ENERGY OPERATING**



**LEGEND**

- Wellbore #1
- North Platte H-27, Wellbore #1, Plan #1 (5-21-12) R V0
- Survey #1

**Final Survey Plot**

Projected Final Survey -  
6747'MD & 6649'TVD @ 926'VS  
1.00 deg Inc 344.50 deg AZ

Project: SEC.27-T5N-R63W  
Site: Perkins 12-27 Pad Sec.27-T5N-R63W  
Well: North Platte H-27  
Plan: Wellbore #1



# **BONANZA CREEK ENERGY OPERATING**

**SEC.27-T5N-R63W**

**Perkins 12-27 Pad Sec.27-T5N-R63W**

**North Platte H-27**

**Wellbore #1**

**Survey: Survey #1**

## **Standard Survey Report**

**12 July, 2012**

<b>Company:</b>	BONANZA CREEK ENERGY OPERATING	<b>Local Co-ordinate Reference:</b>	Well North Platte H-27
<b>Project:</b>	SEC.27-T5N-R63W	<b>TVD Reference:</b>	WELL @ 4557.0ft (Original Well Elev)
<b>Site:</b>	Perkins 12-27 Pad Sec.27-T5N-R63W	<b>MD Reference:</b>	WELL @ 4557.0ft (Original Well Elev)
<b>Well:</b>	North Platte H-27	<b>North Reference:</b>	True
<b>Wellbore:</b>	Wellbore #1	<b>Survey Calculation Method:</b>	Minimum Curvature
<b>Design:</b>	Wellbore #1	<b>Database:</b>	Landmark

<b>Project</b>	SEC.27-T5N-R63W, Weld County, CO		
<b>Map System:</b>	US State Plane 1983	<b>System Datum:</b>	Mean Sea Level
<b>Geo Datum:</b>	North American Datum 1983		Using Well Reference Point
<b>Map Zone:</b>	Colorado Northern Zone		Using geodetic scale factor

Site		Perkins 12-27 Pad Sec.27-T5N-R63W			
Site Position:		Northing:	1,380,297.44 ft	Latitude:	40.372368
From:	Lat/Long	Easting:	3,298,502.00 ft	Longitude:	-104.428630
Position Uncertainty:	0.0 ft	Slot Radius:	"	Grid Convergence:	0.69 °

Well	North Platte H-27					
Well Position	+N/-S	0.0 ft	Northing:	1,380,298.16 ft	Latitude:	40.372370
	+E/-W	0.0 ft	Easting:	3,298,501.99 ft	Longitude:	-104.428630
Position Uncertainty		0.0 ft	Wellhead Elevation:	ft	Ground Level:	4,542.0 ft

Wellbore	Wellbore #1				
Magnetics	Model Name	Sample Date	Declination (°)	Dip Angle (°)	Field Strength (nT)
	IGRF2010	5/21/2012	8.55	67.05	53,057

Design	Wellbore #1				
Audit Notes:					
Version:	1.0	Phase:	ACTUAL	Tie On Depth:	0.0
Vertical Section:	Depth From (TVD) (ft)	+N/-S (ft)	+E/-W (ft)	Direction (°)	
	5,700.0	0.0	0.0	134.82	

Survey Program		Date	7/12/2012		
From (ft)	To (ft)	Survey (Wellbore)	Tool Name	Description	
208.0	6,747.0	Survey #1 (Wellbore #1)	MWD	MWD - Standard	

Survey	Wellbore Data									
	Measured Depth (ft)	Inclination (°)	Azimuth (°)	Vertical Depth (ft)	+N/-S (ft)	+E/-W (ft)	Vertical Section (ft)	Dogleg Rate (°/100ft)	Build Rate (°/100ft)	Turn Rate (°/100ft)
Main Survey	0.0	0.00	0.00	0.0	0.0	0.0	0.0	0.00	0.00	0.00
	208.0	0.10	157.80	208.0	-0.2	0.1	0.2	0.05	0.05	0.00
	445.0	0.20	319.00	445.0	0.0	-0.1	-0.1	0.13	0.04	68.02
	550.0	0.40	177.80	550.0	-0.3	-0.2	0.0	0.54	0.19	-134.48
	672.0	1.30	148.80	672.0	-1.9	0.5	1.7	0.79	0.74	-23.77
	794.0	4.10	129.00	793.8	-5.8	4.6	7.4	2.39	2.30	-16.23
	917.0	6.80	133.40	916.3	-13.6	13.3	19.0	2.22	2.20	3.58
	1,039.0	9.70	132.50	1,037.0	-25.5	26.1	36.5	2.38	2.38	-0.74
	1,161.0	12.00	137.20	1,156.8	-41.7	42.3	59.5	2.02	1.89	3.85
	1,284.0	12.80	136.00	1,276.9	-60.9	60.5	85.9	0.68	0.65	-0.98
	1,406.0	12.90	135.30	1,395.9	-80.3	79.5	113.0	0.15	0.08	-0.57
	1,529.0	12.90	133.40	1,515.8	-99.5	99.1	140.4	0.34	0.00	-1.54
	1,651.0	12.90	133.90	1,634.7	-118.3	118.8	167.7	0.09	0.00	0.41

<b>Company:</b>	BONANZA CREEK ENERGY OPERATING	<b>Local Co-ordinate Reference:</b>	Well North Platte H-27
<b>Project:</b>	SEC.27-T5N-R63W	<b>TVD Reference:</b>	WELL @ 4557.0ft (Original Well Elev)
<b>Site:</b>	Perkins 12-27 Pad Sec.27-T5N-R63W	<b>MD Reference:</b>	WELL @ 4557.0ft (Original Well Elev)
<b>Well:</b>	North Platte H-27	<b>North Reference:</b>	True
<b>Wellbore:</b>	Wellbore #1	<b>Survey Calculation Method:</b>	Minimum Curvature
<b>Design:</b>	Wellbore #1	<b>Database:</b>	Landmark

Survey										
Measured Depth (ft)	Inclination (°)	Azimuth (°)	Vertical Depth (ft)	+N/-S (ft)	+E/-W (ft)	Vertical Section (ft)	Dogleg Rate (°/100ft)	Build Rate (°/100ft)	Turn Rate (°/100ft)	
1,777.0	12.40	134.10	1,757.6	-137.5	138.7	195.3	0.40	-0.40	0.16	
1,902.0	13.50	137.50	1,879.5	-157.6	158.2	223.3	1.07	0.88	2.72	
2,026.0	12.50	135.60	2,000.3	-177.8	177.3	251.1	0.88	-0.81	-1.53	
2,151.0	12.90	138.60	2,122.2	-198.0	196.0	278.6	0.62	0.32	2.40	
2,276.0	12.90	135.60	2,244.1	-218.4	215.0	306.5	0.54	0.00	-2.40	
2,402.0	12.80	133.40	2,366.9	-238.1	235.0	334.5	0.40	-0.08	-1.75	
2,527.0	12.30	133.50	2,488.9	-256.7	254.7	361.6	0.40	-0.40	0.08	
2,652.0	13.30	133.90	2,610.8	-275.9	274.7	389.3	0.80	0.80	0.32	
2,777.0	12.60	132.80	2,732.6	-295.1	295.1	417.3	0.59	-0.56	-0.88	
2,903.0	13.20	133.90	2,855.5	-314.4	315.5	445.4	0.51	0.48	0.87	
3,027.0	11.40	134.20	2,976.6	-332.8	334.5	471.9	1.45	-1.45	0.24	
3,152.0	11.40	134.20	3,099.1	-350.0	352.2	496.6	0.00	0.00	0.00	
3,276.0	12.20	134.80	3,220.5	-367.8	370.3	521.9	0.65	0.65	0.48	
3,402.0	12.50	137.80	3,343.6	-387.3	388.9	548.8	0.56	0.24	2.38	
3,526.0	12.90	136.50	3,464.6	-407.2	407.5	576.1	0.40	0.32	-1.05	
3,652.0	13.20	136.40	3,587.3	-427.9	427.1	604.5	0.24	0.24	-0.08	
3,777.0	12.30	136.40	3,709.2	-447.8	446.1	632.1	0.72	-0.72	0.00	
3,901.0	12.20	134.90	3,830.4	-466.7	464.5	658.4	0.27	-0.08	-1.21	
4,027.0	12.40	136.00	3,953.5	-485.8	483.3	685.2	0.24	0.16	0.87	
4,152.0	12.70	134.60	4,075.5	-505.1	502.4	712.4	0.34	0.24	-1.12	
4,276.0	13.00	133.40	4,196.4	-524.2	522.3	740.0	0.32	0.24	-0.97	
4,401.0	12.00	135.50	4,318.5	-543.2	541.6	767.0	0.88	-0.80	1.68	
4,526.0	12.10	132.50	4,440.7	-561.3	560.3	793.1	0.51	0.08	-2.40	
4,652.0	11.90	130.70	4,564.0	-578.7	579.9	819.3	0.34	-0.16	-1.43	
4,777.0	12.60	133.90	4,686.1	-596.5	599.5	845.7	0.78	0.56	2.56	
4,902.0	11.00	133.70	4,808.5	-614.2	618.0	871.3	1.28	-1.28	-0.16	
5,028.0	9.00	132.30	4,932.6	-629.2	634.0	893.2	1.60	-1.59	-1.11	
5,153.0	6.90	130.90	5,056.3	-640.7	646.9	910.4	1.69	-1.68	-1.12	
5,275.0	4.60	134.80	5,177.7	-648.9	655.9	922.6	1.91	-1.89	3.20	
5,400.0	3.30	148.50	5,302.4	-655.5	661.3	931.1	1.28	-1.04	10.96	
5,526.0	1.10	136.40	5,428.3	-659.5	664.0	935.9	1.77	-1.75	-9.60	
5,651.0	0.60	249.00	5,553.3	-660.6	664.3	936.8	1.15	-0.40	90.08	
5,772.0	1.20	236.40	5,674.3	-661.5	662.6	936.3	0.52	0.50	-10.41	
5,797.6	1.32	238.02	5,699.9	-661.8	662.1	936.2	0.49	0.47	6.31	
TARGET BHL 2586'FNL, 1350'FWL										
5,897.0	1.80	242.20	5,799.3	-663.2	659.8	935.4	0.49	0.48	4.21	
6,023.0	1.60	243.60	5,925.2	-664.9	656.5	934.3	0.16	-0.16	1.11	
6,148.0	0.70	336.00	6,050.2	-664.9	654.6	933.0	1.42	-0.72	73.92	
6,273.0	1.10	338.10	6,175.2	-663.1	653.8	931.2	0.32	0.32	1.68	
6,339.8	0.97	350.54	6,242.0	-662.0	653.5	930.2	0.39	-0.20	18.62	
TARGET CIRCLE 2586'FNL & 1350'FWL										
6,398.0	0.90	3.80	6,300.1	-661.0	653.4	929.5	0.39	-0.12	22.78	
6,523.0	0.70	0.30	6,425.1	-659.3	653.5	928.3	0.16	-0.16	-2.80	
6,648.0	0.80	1.00	6,550.1	-657.7	653.5	927.1	0.08	0.08	0.56	
6,702.0	1.00	344.50	6,604.1	-656.8	653.4	926.5	0.60	0.37	-30.56	
6,747.0	1.00	344.50	6,649.1	-656.1	653.2	925.8	0.00	0.00	0.00	

Checked By: \_\_\_\_\_ Approved By: \_\_\_\_\_ Date: \_\_\_\_\_