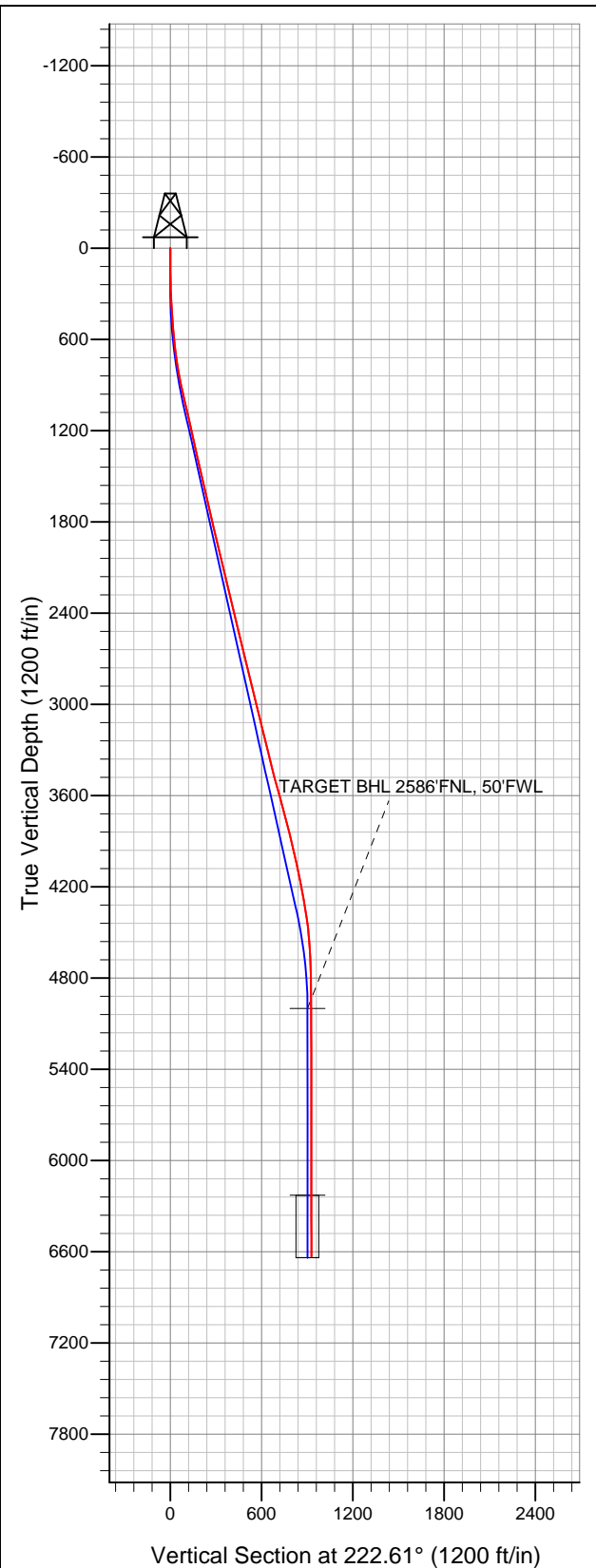




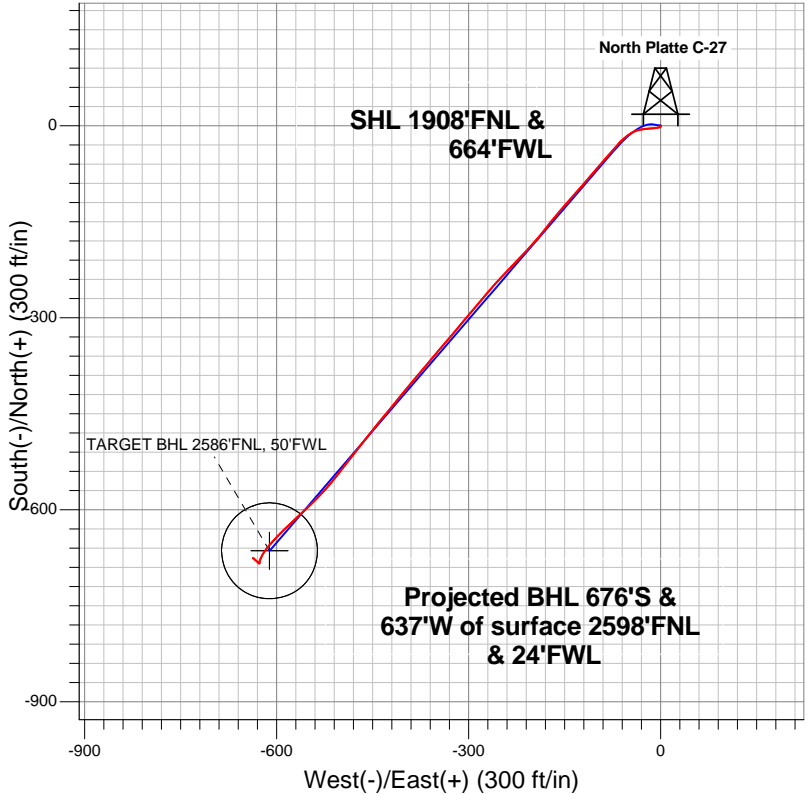
# Well Name: North Platte C-27

Surface Location: Perkins 12-27 Pad Sec.27-T5N-R63W  
North American Datum 1983 US State Plane 1983Colorado Northern Zone  
Ground Elevation: 4542.0

+N/-S	+E/-W	Northing	Easting	Latitude	Longitude	Slot
0.0	0.0	1380316.11	3298479.48	40.372420	-104.428710	
Original Well Elev				WELL @ 4557.0ft (Original Well Elev)		



## BONANZA CREEK ENERGY OPERATING



### LEGEND

- Wellbore #1
- North Platte C-27, Wellbore #1, Plan #1 (5-16-12) V0
- Survey #1

## Final Survey Plot

Projected Final Survey -  
6736'MD & 6632'TVD @ 929°VS  
0.40 deg Inc 286.60 deg AZ

Project: SEC.27-T5N-R63W  
Site: Perkins 12-27 Pad Sec.27-T5N-R63W  
Well: North Platte C-27  
Plan: Wellbore #1



# **BONANZA CREEK ENERGY OPERATING**

**SEC.27-T5N-R63W**

**Perkins 12-27 Pad Sec.27-T5N-R63W**

**North Platte C-27**

**Wellbore #1**

**Survey: Survey #1**

## **Standard Survey Report**

**12 July, 2012**

<b>Company:</b>	BONANZA CREEK ENERGY OPERATING	<b>Local Co-ordinate Reference:</b>	Well North Platte C-27
<b>Project:</b>	SEC.27-T5N-R63W	<b>TVD Reference:</b>	WELL @ 4557.0ft (Original Well Elev)
<b>Site:</b>	Perkins 12-27 Pad Sec.27-T5N-R63W	<b>MD Reference:</b>	WELL @ 4557.0ft (Original Well Elev)
<b>Well:</b>	North Platte C-27	<b>North Reference:</b>	True
<b>Wellbore:</b>	Wellbore #1	<b>Survey Calculation Method:</b>	Minimum Curvature
<b>Design:</b>	Wellbore #1	<b>Database:</b>	Landmark

<b>Project</b>	SEC.27-T5N-R63W, Weld County, CO		
<b>Map System:</b>	US State Plane 1983	<b>System Datum:</b>	Mean Sea Level
<b>Geo Datum:</b>	North American Datum 1983		Using Well Reference Point
<b>Map Zone:</b>	Colorado Northern Zone		Using geodetic scale factor

Site		Perkins 12-27 Pad Sec.27-T5N-R63W			
Position:		Northing:		1,380,297.44 ft	
From:		Easting:		3,298,502.00 ft	
Position Uncertainty:		Slot Radius:		Grid Convergence:	
Lat/Long		0.0 ft		40.372368	
				-104.428630	
				0.69 °	

Well	North Platte C-27					
Well Position	+N/-S	0.0 ft	Northing:	1,380,316.11 ft	Latitude:	40.372420
	+E/-W	0.0 ft	Easting:	3,298,479.48 ft	Longitude:	-104.428710
Position Uncertainty		0.0 ft	Wellhead Elevation:	ft	Ground Level:	4,542.0 ft

Wellbore	Wellbore #1				
Magnetics	Model Name	Sample Date	Declination (°)	Dip Angle (°)	Field Strength (nT)
	IGRF2010	5/16/2012	8.56	67.05	53,058

Design	Wellbore #1			
Audit Notes:				
Version:	1.0	Phase:	ACTUAL	Tie On Depth: 0.0
Vertical Section:	Depth From (TVD) (ft)	+N/-S (ft)	+E/-W (ft)	Direction (°)
	0.0	0.0	0.0	222.61

Survey Program		Date	7/12/2012		
From (ft)	To (ft)	Survey (Wellbore)	Tool Name	Description	
146.0	6,736.0	Survey #1 (Wellbore #1)	MWD	MWD - Standard	

Survey	Wellbore Data									
	Measured Depth (ft)	Inclination (°)	Azimuth (°)	Vertical Depth (ft)	+N/-S (ft)	+E/-W (ft)	Vertical Section (ft)	Dogleg Rate (°/100ft)	Build Rate (°/100ft)	Turn Rate (°/100ft)
Survey	0.0	0.00	0.00	0.0	0.0	0.0	0.0	0.00	0.00	0.00
	146.0	0.80	169.20	146.0	-1.0	0.2	0.6	0.55	0.55	0.00
	235.0	1.50	239.00	235.0	-2.2	-0.7	2.1	1.61	0.79	78.43
	327.0	4.10	262.40	326.9	-3.3	-5.0	5.8	3.03	2.83	25.43
	419.0	5.50	264.80	418.5	-4.1	-12.6	11.6	1.54	1.52	2.61
	519.0	5.70	266.40	518.1	-4.8	-22.4	18.7	0.25	0.20	1.60
	642.0	7.00	254.80	640.3	-7.2	-35.7	29.5	1.48	1.06	-9.43
	765.0	9.60	234.80	762.0	-15.1	-51.3	45.8	3.13	2.11	-16.26
	886.0	11.80	221.30	880.9	-30.2	-67.7	68.1	2.74	1.82	-11.16
	1,008.0	13.00	221.10	1,000.1	-49.9	-85.0	94.3	0.98	0.98	-0.16
	1,130.0	12.80	220.20	1,119.0	-70.6	-102.7	121.5	0.23	-0.16	-0.74
	1,253.0	12.60	221.30	1,239.0	-91.1	-120.4	148.5	0.26	-0.16	0.89
	1,375.0	12.10	221.40	1,358.2	-110.6	-137.6	174.6	0.41	-0.41	0.08

<b>Company:</b>	BONANZA CREEK ENERGY OPERATING	<b>Local Co-ordinate Reference:</b>	Well North Platte C-27
<b>Project:</b>	SEC.27-T5N-R63W	<b>TVD Reference:</b>	WELL @ 4557.0ft (Original Well Elev)
<b>Site:</b>	Perkins 12-27 Pad Sec.27-T5N-R63W	<b>MD Reference:</b>	WELL @ 4557.0ft (Original Well Elev)
<b>Well:</b>	North Platte C-27	<b>North Reference:</b>	True
<b>Wellbore:</b>	Wellbore #1	<b>Survey Calculation Method:</b>	Minimum Curvature
<b>Design:</b>	Wellbore #1	<b>Database:</b>	Landmark

Survey										
Measured Depth (ft)	Inclination (°)	Azimuth (°)	Vertical Depth (ft)	+N/-S (ft)	+E/-W (ft)	Vertical Section (ft)	Dogleg Rate (°/100ft)	Build Rate (°/100ft)	Turn Rate (°/100ft)	
1,497.0	13.20	220.60	1,477.2	-130.8	-155.1	201.3	0.91	0.90	-0.66	
1,620.0	13.20	219.70	1,597.0	-152.3	-173.2	229.4	0.17	0.00	-0.73	
1,744.0	13.00	218.60	1,717.7	-174.1	-191.0	257.4	0.26	-0.16	-0.89	
1,869.0	13.10	223.00	1,839.5	-195.4	-209.4	285.6	0.80	0.08	3.52	
1,994.0	13.50	225.10	1,961.2	-216.1	-229.4	314.3	0.50	0.32	1.68	
2,120.0	13.90	222.00	2,083.6	-237.7	-250.0	344.2	0.66	0.32	-2.46	
2,244.0	13.60	220.70	2,204.0	-259.8	-269.4	373.6	0.35	-0.24	-1.05	
2,370.0	13.20	220.60	2,326.6	-282.0	-288.5	402.8	0.32	-0.32	-0.08	
2,495.0	13.00	219.00	2,448.3	-303.7	-306.6	431.1	0.33	-0.16	-1.28	
2,620.0	13.90	220.70	2,569.9	-326.1	-325.2	460.2	0.79	0.72	1.36	
2,745.0	14.20	220.40	2,691.2	-349.1	-345.0	490.5	0.25	0.24	-0.24	
2,871.0	13.60	220.60	2,813.5	-372.1	-364.6	520.7	0.48	-0.48	0.16	
2,996.0	14.10	219.80	2,934.9	-395.0	-383.9	550.6	0.43	0.40	-0.64	
3,120.0	13.60	218.80	3,055.2	-418.0	-402.7	580.3	0.45	-0.40	-0.81	
3,246.0	14.10	220.00	3,177.6	-441.3	-421.9	610.4	0.46	0.40	0.95	
3,369.0	13.30	219.30	3,297.1	-463.7	-440.5	639.5	0.66	-0.65	-0.57	
3,495.0	14.10	217.90	3,419.5	-487.0	-459.1	669.2	0.69	0.63	-1.11	
3,620.0	15.60	218.40	3,540.3	-512.2	-478.9	701.2	1.20	1.20	0.40	
3,745.0	15.80	217.90	3,660.7	-538.8	-499.8	734.9	0.19	0.16	-0.40	
3,870.0	14.30	220.40	3,781.4	-564.0	-520.2	767.3	1.31	-1.20	2.00	
3,996.0	14.00	226.00	3,903.6	-586.4	-541.3	798.0	1.11	-0.24	4.44	
4,119.0	11.40	226.40	4,023.5	-605.1	-560.8	825.0	2.12	-2.11	0.33	
4,245.0	11.90	227.40	4,146.9	-622.5	-579.4	850.4	0.43	0.40	0.79	
4,369.0	10.60	223.70	4,268.6	-639.4	-596.7	874.5	1.20	-1.05	-2.98	
4,493.0	8.40	221.30	4,390.8	-654.5	-610.5	895.0	1.80	-1.77	-1.94	
4,618.0	5.70	211.60	4,514.9	-666.6	-619.8	910.2	2.35	-2.16	-7.76	
4,743.0	3.00	203.50	4,639.5	-674.9	-624.4	919.4	2.21	-2.16	-6.48	
4,868.0	1.40	204.90	4,764.4	-679.3	-626.3	924.0	1.28	-1.28	1.12	
4,992.0	0.80	174.10	4,888.4	-681.5	-626.9	926.0	0.66	-0.48	-24.84	
5,103.5	0.24	137.22	4,999.9	-682.5	-626.6	926.5	0.56	-0.50	-33.08	
TARGET BHL 2586'FNL, 50'FWL										
5,116.0	0.20	121.60	5,012.4	-682.5	-626.6	926.5	0.56	-0.30	-124.90	
5,241.0	0.30	208.20	5,137.4	-682.9	-626.5	926.8	0.28	0.08	69.28	
5,367.0	0.30	212.10	5,263.4	-683.5	-626.9	927.4	0.02	0.00	3.10	
5,491.0	0.20	215.80	5,387.4	-683.9	-627.2	928.0	0.08	-0.08	2.98	
5,617.0	0.40	311.40	5,513.4	-683.8	-627.6	928.2	0.37	0.16	75.87	
5,741.0	0.40	306.00	5,637.4	-683.3	-628.3	928.2	0.03	0.00	-4.35	
5,865.0	0.60	322.00	5,761.4	-682.5	-629.1	928.2	0.20	0.16	12.90	
5,990.0	1.10	313.70	5,886.4	-681.2	-630.3	928.1	0.41	0.40	-6.64	
6,114.0	1.10	314.60	6,010.3	-679.5	-632.0	928.0	0.01	0.00	0.73	
6,238.0	1.00	313.70	6,134.3	-677.9	-633.7	927.9	0.08	-0.08	-0.73	
6,330.5	0.78	308.90	6,226.9	-677.0	-634.7	928.0	0.25	-0.24	-5.18	
TARGET CIRCLE 2586'FNL & 50'FWL										
6,363.0	0.70	306.50	6,259.3	-676.7	-635.1	928.0	0.25	-0.24	-7.40	
6,489.0	0.50	317.10	6,385.3	-675.9	-636.1	928.0	0.18	-0.16	8.41	
6,613.0	0.40	218.30	6,509.3	-675.8	-636.7	928.4	0.55	-0.08	-79.68	
6,691.0	0.40	286.60	6,587.3	-675.9	-637.1	928.8	0.58	0.00	87.56	
6,736.0	0.40	286.60	6,632.3	-675.8	-637.4	929.0	0.00	0.00	0.00	

<b>Company:</b>	BONANZA CREEK ENERGY OPERATING	<b>Local Co-ordinate Reference:</b>	Well North Platte C-27
<b>Project:</b>	SEC.27-T5N-R63W	<b>TVD Reference:</b>	WELL @ 4557.0ft (Original Well Elev)
<b>Site:</b>	Perkins 12-27 Pad Sec.27-T5N-R63W	<b>MD Reference:</b>	WELL @ 4557.0ft (Original Well Elev)
<b>Well:</b>	North Platte C-27	<b>North Reference:</b>	True
<b>Wellbore:</b>	Wellbore #1	<b>Survey Calculation Method:</b>	Minimum Curvature
<b>Design:</b>	Wellbore #1	<b>Database:</b>	Landmark

Checked By: _____	Approved By: _____	Date: _____
-------------------	--------------------	-------------