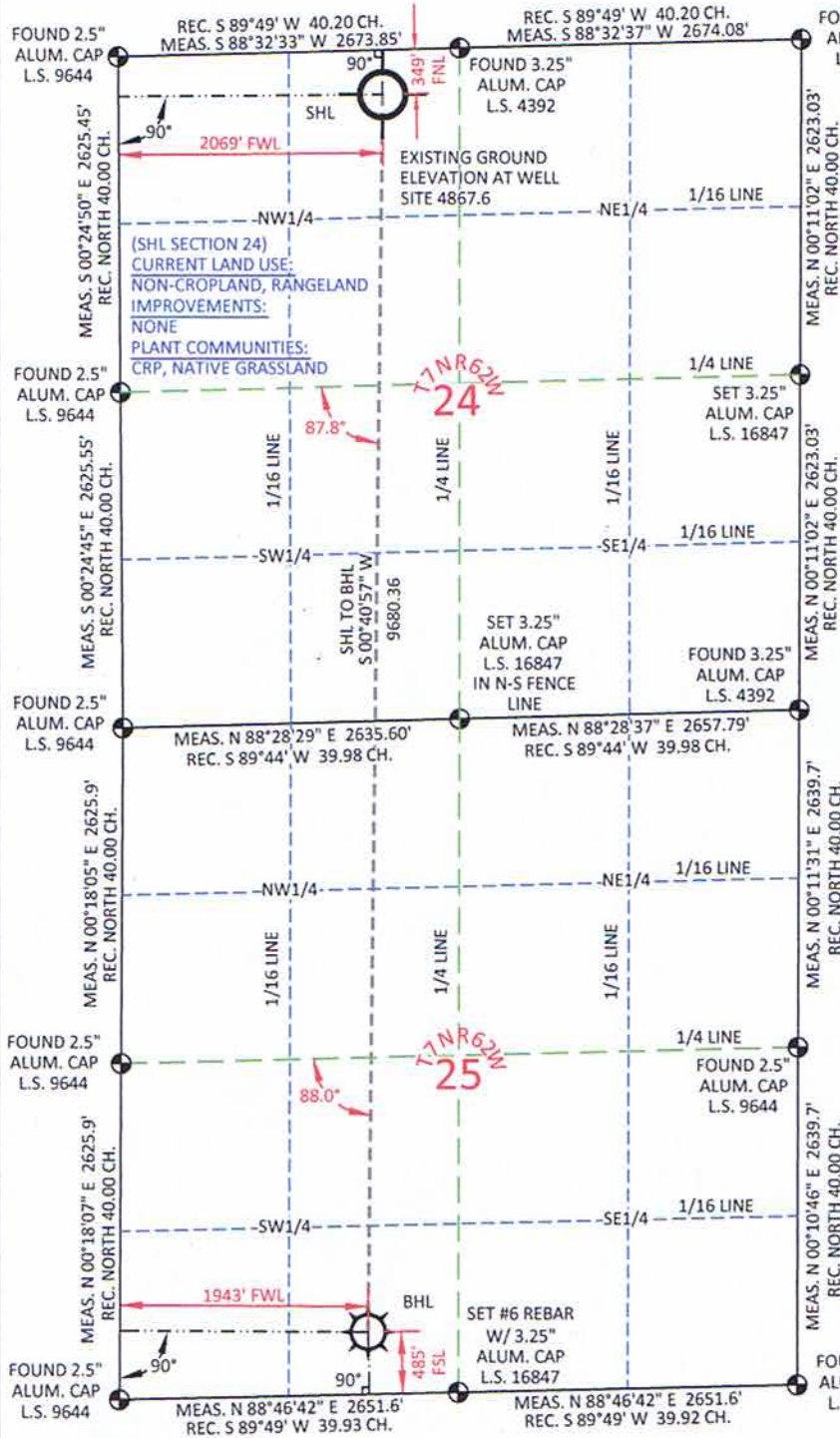


**MARATHON OIL CO. CROW VALLEY 7-62-24-2H AS-DRILLED WELL LOCATION PLAT**  
 LOCATED WITHIN THE NE1/4 NW1/4, SECTION 24, T7N, R62W  
 OF THE 6TH P.M., WELD COUNTY, COLORADO



SURFACE HOLE LOCATION (SEC 24)			BOTTOM HOLE LOCATION (SEC 25)		
GEOGRAPHIC	DEC. MIN. SEC.	DEC. DEG.	GEOGRAPHIC	DEC. MIN. SEC.	DEC. DEG.
LAT.	40.566060°		LAT.	40.539497°	
LONG.	104.271719°		LONG.	104.272617°	
LAT.	40.566077°		LAT.	40.539514°	
LONG.	104.271215°		LONG.	104.272112°	
LAT.	40°33'57.82"		LAT.	40°32'22.19"	
LONG.	104°16'18.20"		LONG.	104°16'21.42"	
LAT.	40°33'57.88"		LAT.	40°32'22.25"	
LONG.	104°16'16.37"		LONG.	104°16'19.60"	
NORTH	1451420.06		NORTH	1441740.38	
EAST	3341239.85		EAST	3341124.52	
NORTH	451420.18		NORTH	441740.68	
EAST	2341389.23		EAST	2341274.00	
FOOTAGE: 2069' FWL - 349' FNL			FOOTAGE: 1943' FWL - 485' FSL		
MEASURE DATE	INSTRUMENT OPERATOR	PDOP	SHL GRND ELEV.		
6/18/2012	LAUREN VANCE	1.5	4867.6		

I, Rodney A. Walters, Professional Land Surveyor, CO PLS #16847 hereby certify that (in accordance with a request from Anna Walls with Marathon Oil Co, 5555 San Felipe, Houston, TX 77056) I and or personnel under my direction made a survey on the 18th day of June 2012, for the Surface Hole Location and Elevation of Marathon Oil Co. Crow Valley 7-62-24-2H being located in the NE1/4 NW1/4, Section 24 T7N, R62W, and the Bottom Hole Location being located in the SE1/4 SW1/4 of Section 25, T7N, R62W, both being of the 6th P.M., Weld County, State of Colorado.

- All bearings and distances are GRID, based on the Colorado State Plane Coordinate System, North Zone, North American Datum 1983 from GPS observations occupying a WHS control point (5/8" rebar) and having the Location and Elevation derived from an Opus Solution.
- Vertical Datum used is of NAVD 88.
- Record Bearings and Distances as shown are based on the General Land Office Survey plat approved on the 16th day of December 1872.
- Geographic coordinates for the bottom hole location were taken from the wellpath report prepared by Baker Hughes for Crow Valley 7-62-22-2H and dated 06/19/2012.



**CONFIDENTIALITY NOTES:**

The information contained in this plat is legally privileged and confidential information intended only for the use of the recipients. If you are not the intended recipients, you are hereby notified that any use, dissemination, distribution or copying of this information is strictly prohibited.

**WILLIAM H. SMITH & ASSOCIATES P.C.**  
 SURVEYING CONSULTANTS  
 550 EAST SECOND NORTH GREEN RIVER, WY. PHONE: 307-875-3638 307-875-3639  
 www.wsmithpc.com

DRAWN BY: LAL CHECKED BY: RAW  
 PROJECT NO: 762242H JOB NO: 2011001

REVISIONS:

**LEGEND**  
 FOUND MONUMENT, UNLESS OTHERWISE NOTED

**LOCATION:**  
 CROW VALLEY 7-62-24-2H  
 WITHIN THE NE1/4 NW1/4,  
 SECTION 24, T 7 N, R 62 W,  
 6TH PM.  
 WELD COUNTY,  
 COLORADO

**MARATHON OIL COMPANY**  
 PO BOX 3128, HOUSTON TX, 77253  
 5555 SAN FELIPE, HOUSTON TX, 77056

**AS-DRILLED  
 WELL LOCATION PLAT**

SCALE: 1"=1500' EXHIBIT "A"  
 DATE: 7/19/2012 SHEET 1 OF 1