



# CEMENT BOND LOG

Company ENCANA OIL & GAS (USA) INC  
 Well HMU 11-9 (P 11SW)  
 Field MAMM CREEK  
 County GARFIELD State COLORADO

Location: API #: 05-045-10146-0000  
 SHL: SESE 218' FSL, 568' FEL  
 SEC: 11 TWP: 8S RGE: 93W  
 Permanent Datum GROUND LEVEL Elevation: 7706'  
 Log Measured From KELLY BUSHING = 11 FT  
 Drilling Measured From KELLY BUSHING  
 Other Services: NONE  
 Elevation: K.B. 7717', D.F. 7716', G.L. 7706'

Date 5 JUNE 2012

Run Number	ONE
Depth Driller	9555'
Depth Logger	4090'
Bottom Logged Interval	4090'
Top Log Interval	1850'
Open Hole Size	7.875"
Type Fluid	WATER
Density / Viscosity	~8.34 LBS/ GAL
Max. Recorded Temp.	119 DEG F
Estimated Cement Top	SEE LOG
Time Well Ready	N/A
Time Logger on Bottom	1735
Equipment Number	ST0602
Location	GRAND JUNCTION
Recorded By	M.BERNATCHEZ
Witnessed By	J. PENNELL

Borehole Record				Tubing Record			
Run Number	Bit	From	To	Size	Weight	From	To
UKN							
Casing Record		Size		Wgt/Ft		Top	Bottom
Surface String							
Prot. String		4.5"		11.6#		SURFACE	9555'
Production String							
Liner							

<<< Fold Here >>>

All interpretations are opinions based on inferences from electrical or other measurements and we cannot and do not guarantee the accuracy or correctness of any interpretation, and we shall not, except in the case of gross or willful negligence on our part, be liable or responsible for any loss, costs, damages, or expenses incurred or sustained by anyone resulting from any interpretation made by any of our officers, agents or employees. These interpretations are also subject to our general terms and conditions set out in our current Price Schedule.

### Comments

LOG CORRELATED TO SCHLUMBERGER CEMENT BOND LOG DATED 2 SPE 2004.  
 SQUEEZE HOLES @ 3300' AND 4000'

WE APPRECIATE YOUR BUSINESS, MESA WIRELINE LLC, GRAND JUNCTION CO. (970) 257-0458

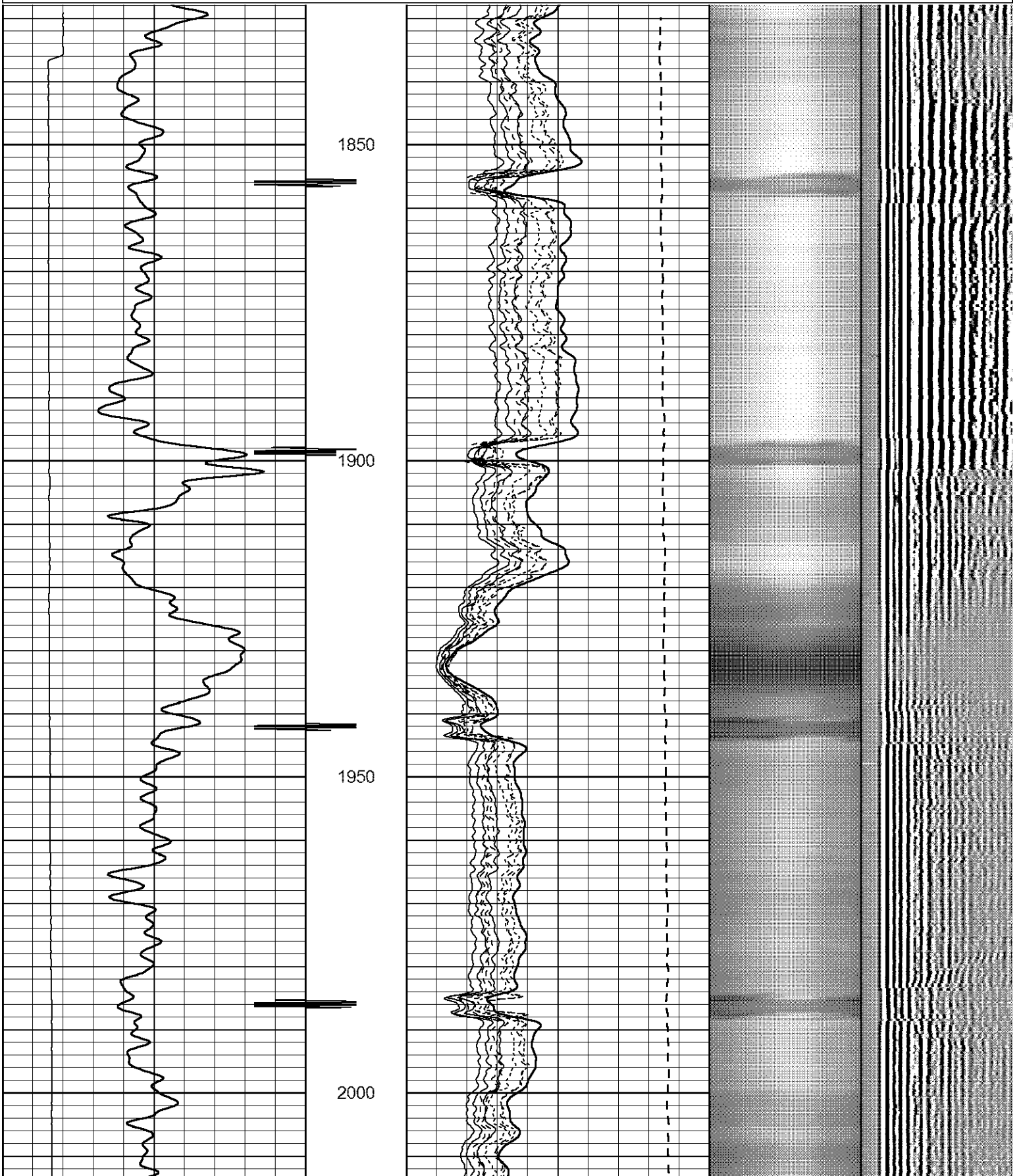


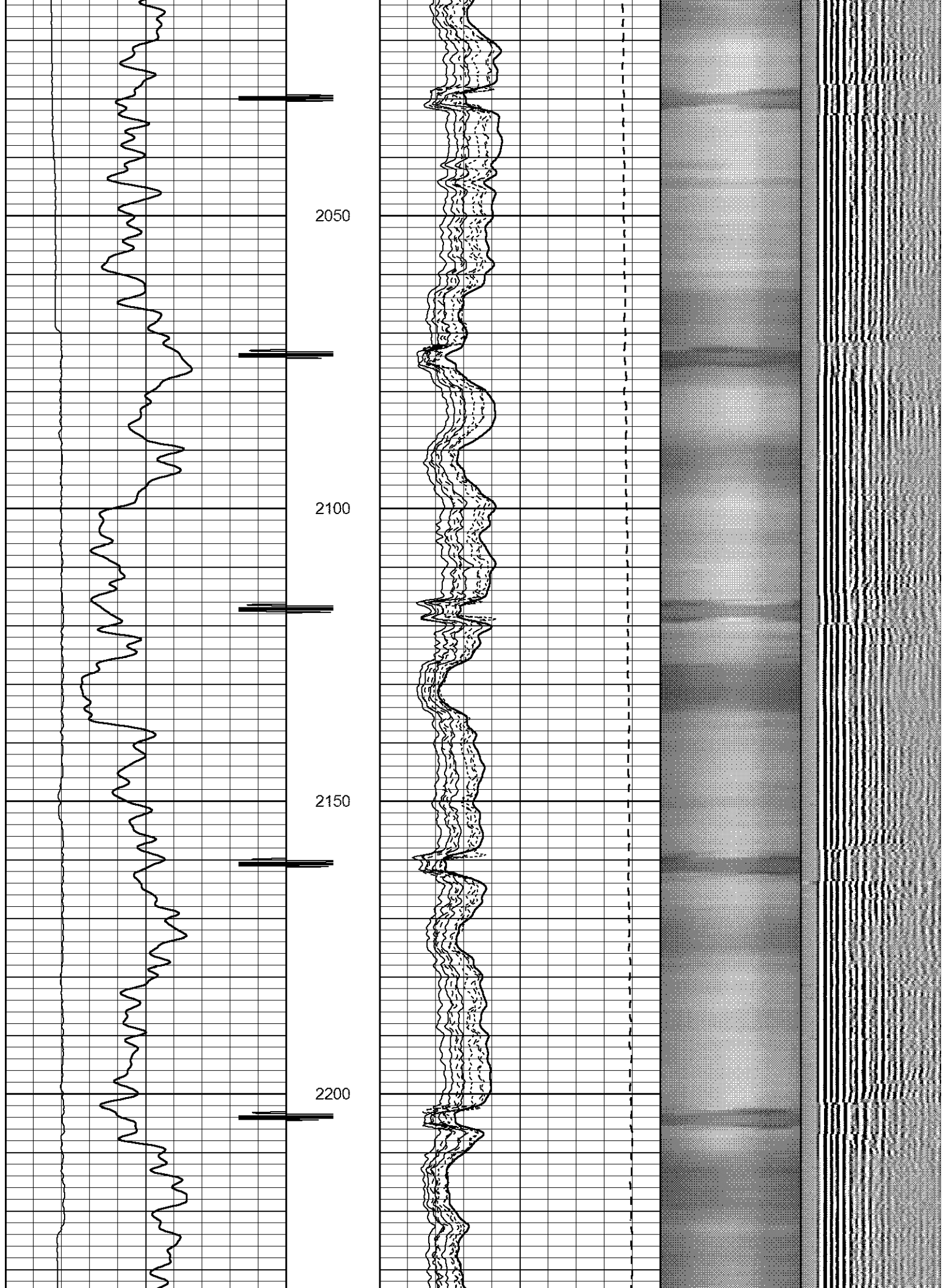
MAIN LOG PASS

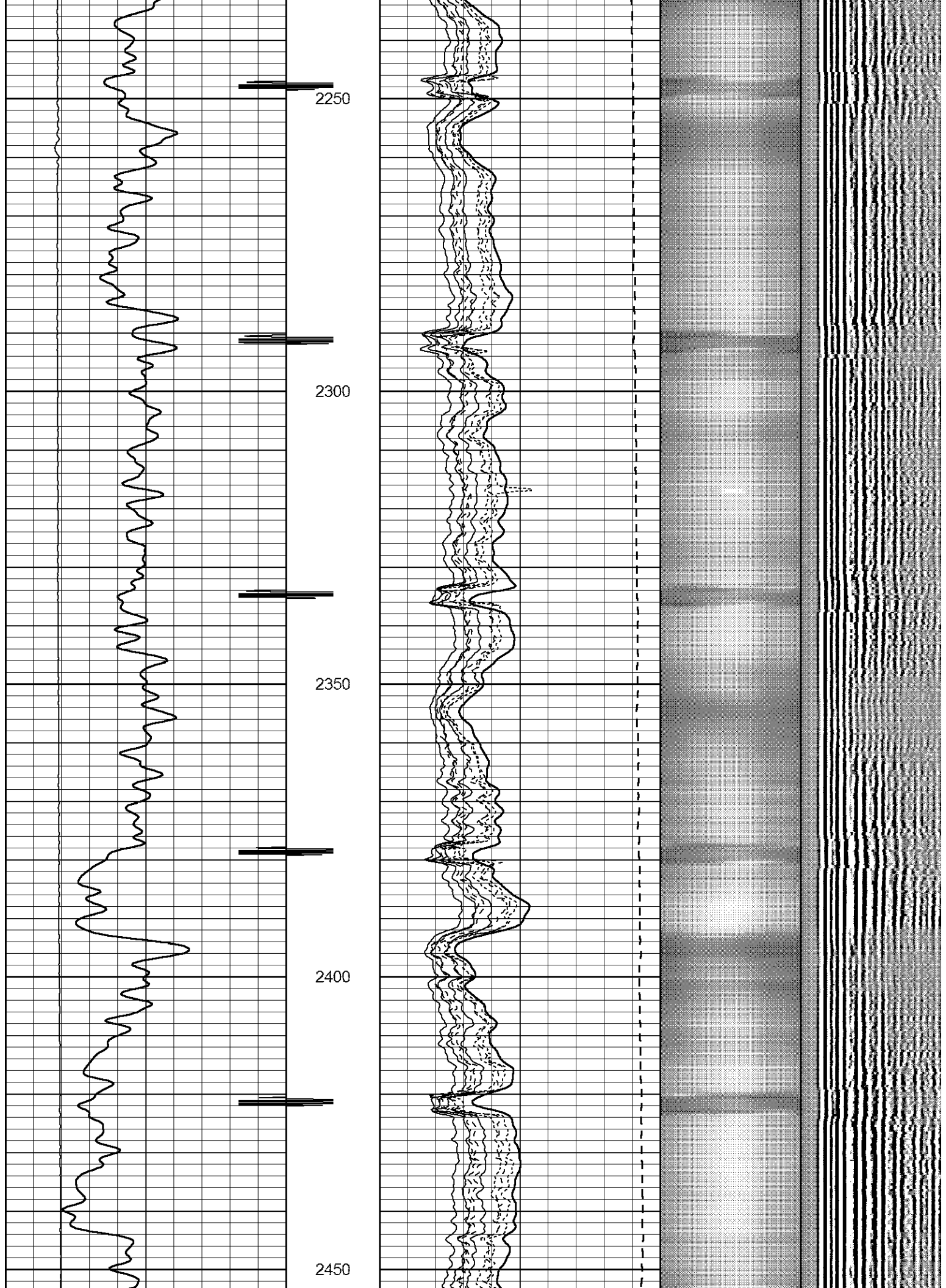
SCALE 5" = 100'

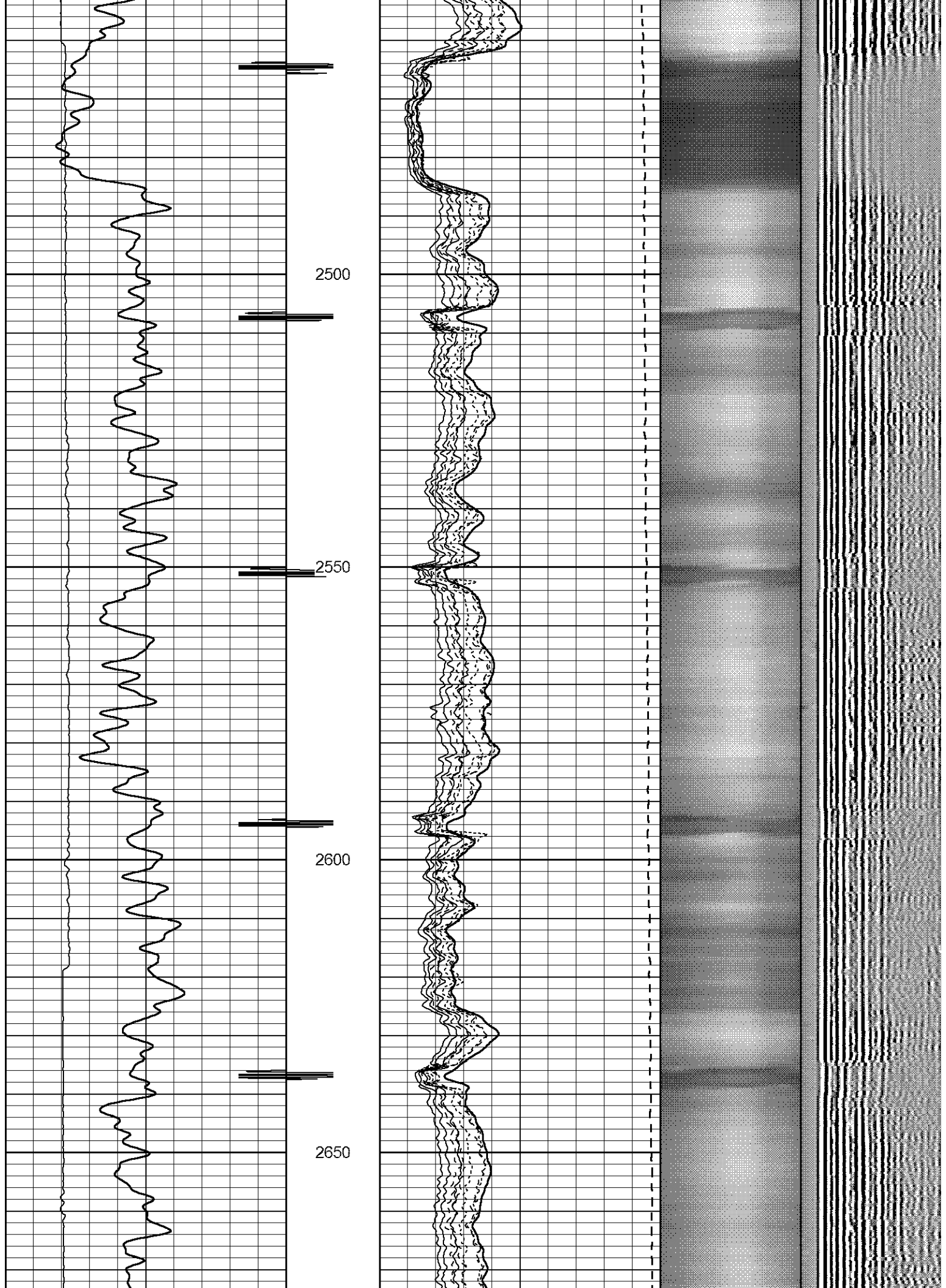
Database File: hmu11-9.db  
 Dataset Pathname: pass10  
 Presentation Format: rbt\_fin  
 Dataset Creation: Tue Jun 05 17:27:52 2012 by Log SCH 120430  
 Charted by: Depth in Feet scaled 1:240

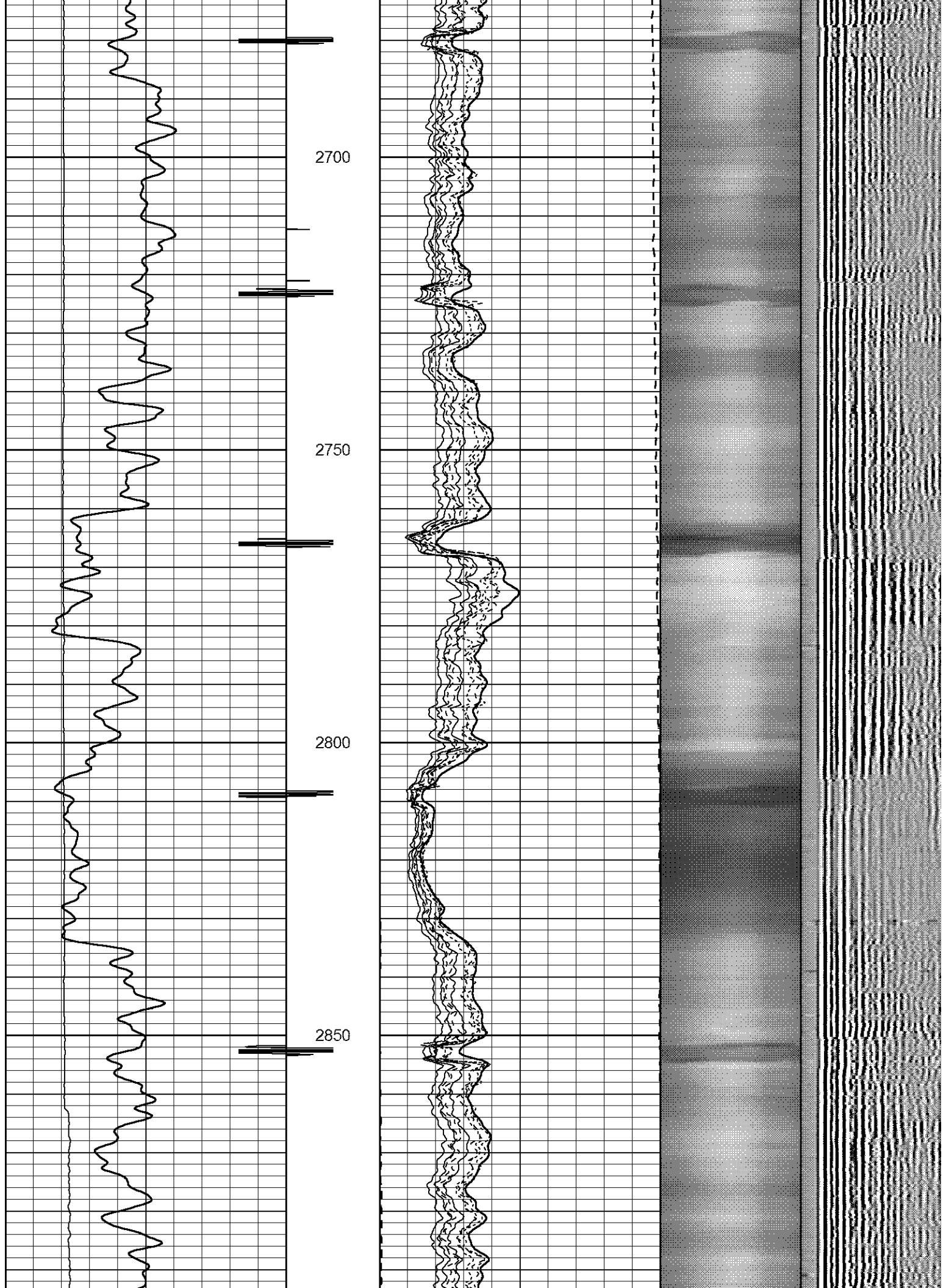
0	LTEN (lb)	4000	0	Amplitude (mV)	100	1	SECTORS	8	Variable Density	
0	GR (GAPI)	200	0	TT3FT (usec)	180	0		82	200	1200
		CCL	0	TEMP (degF)	100					

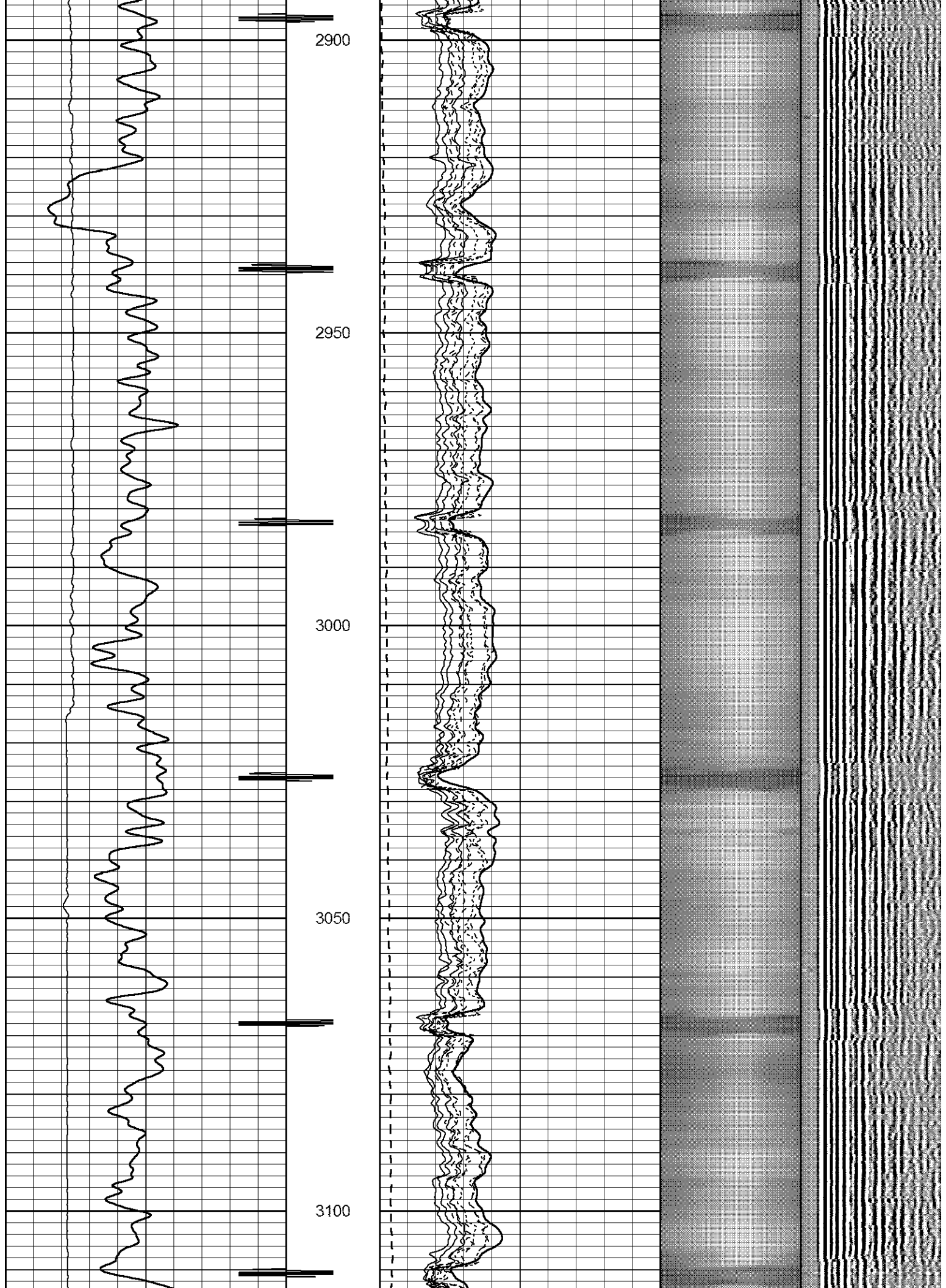


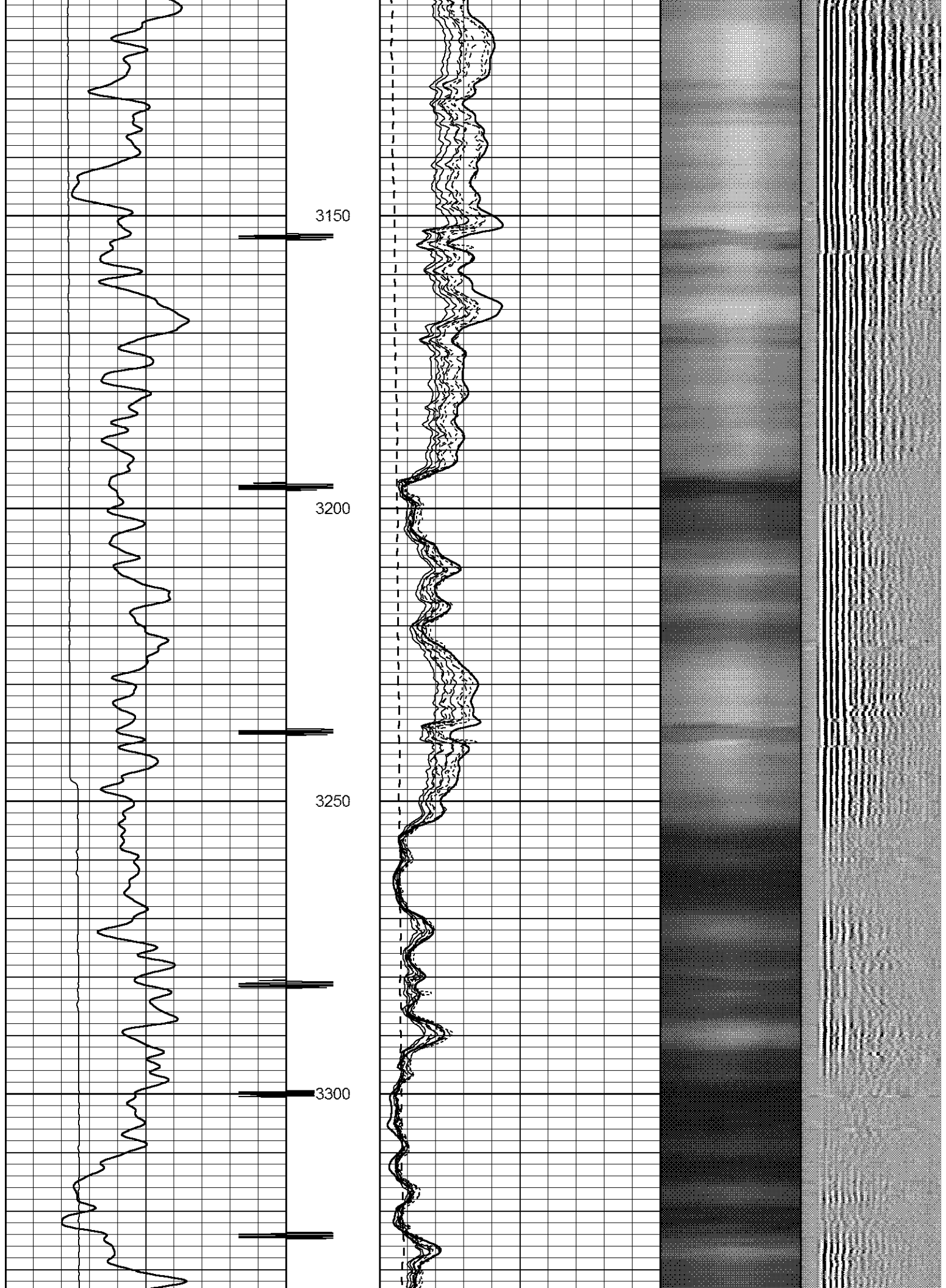


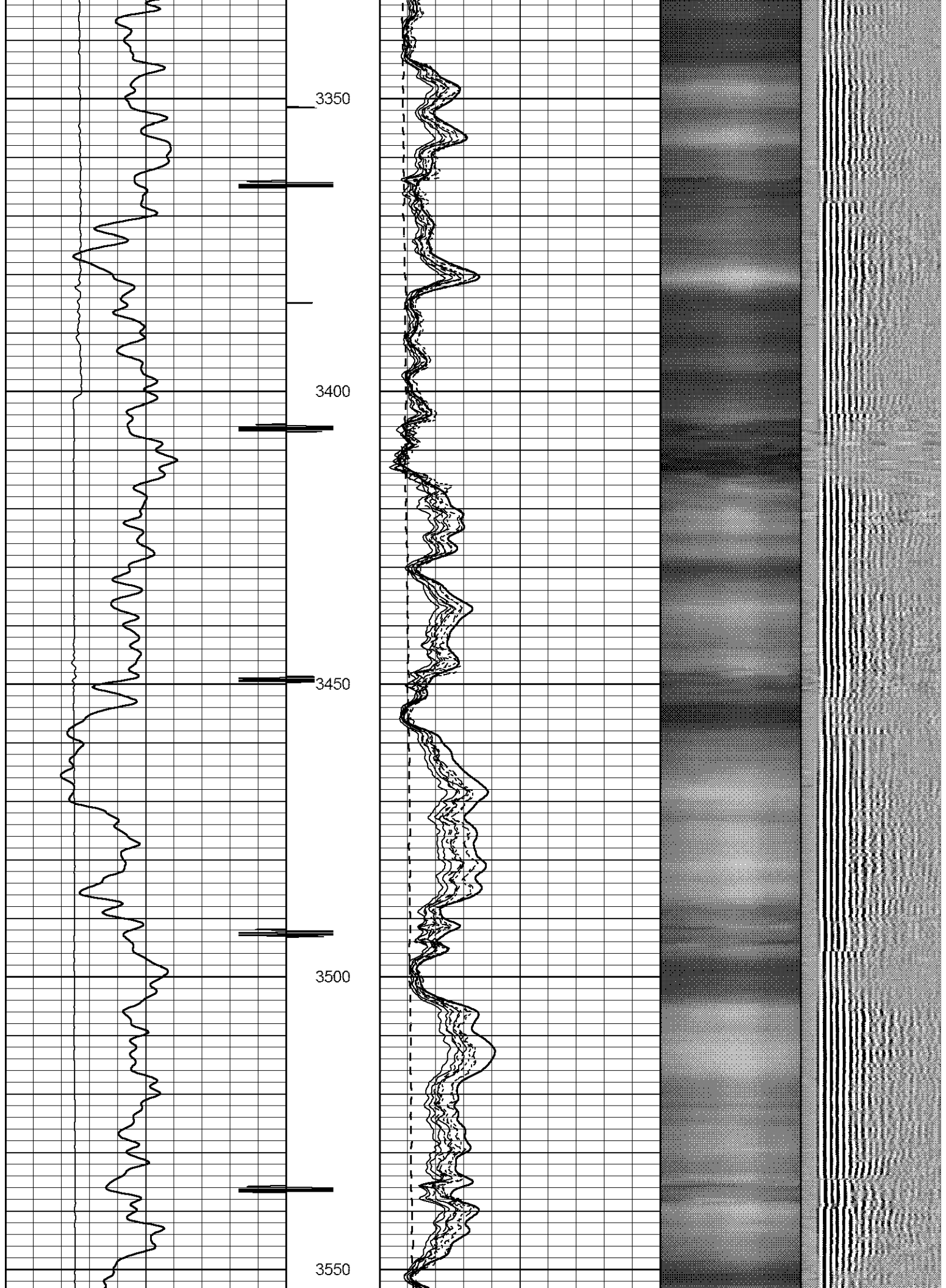


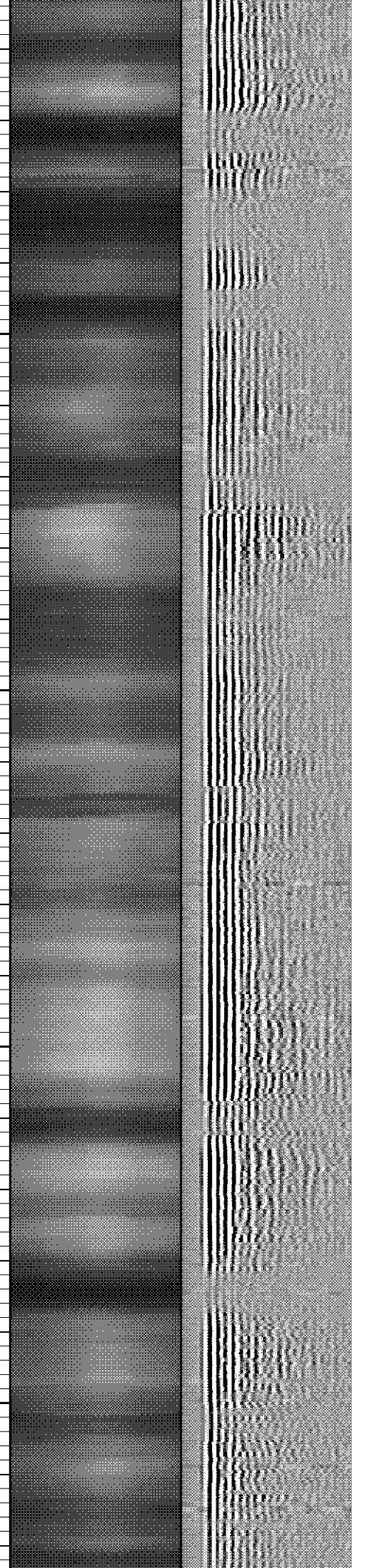
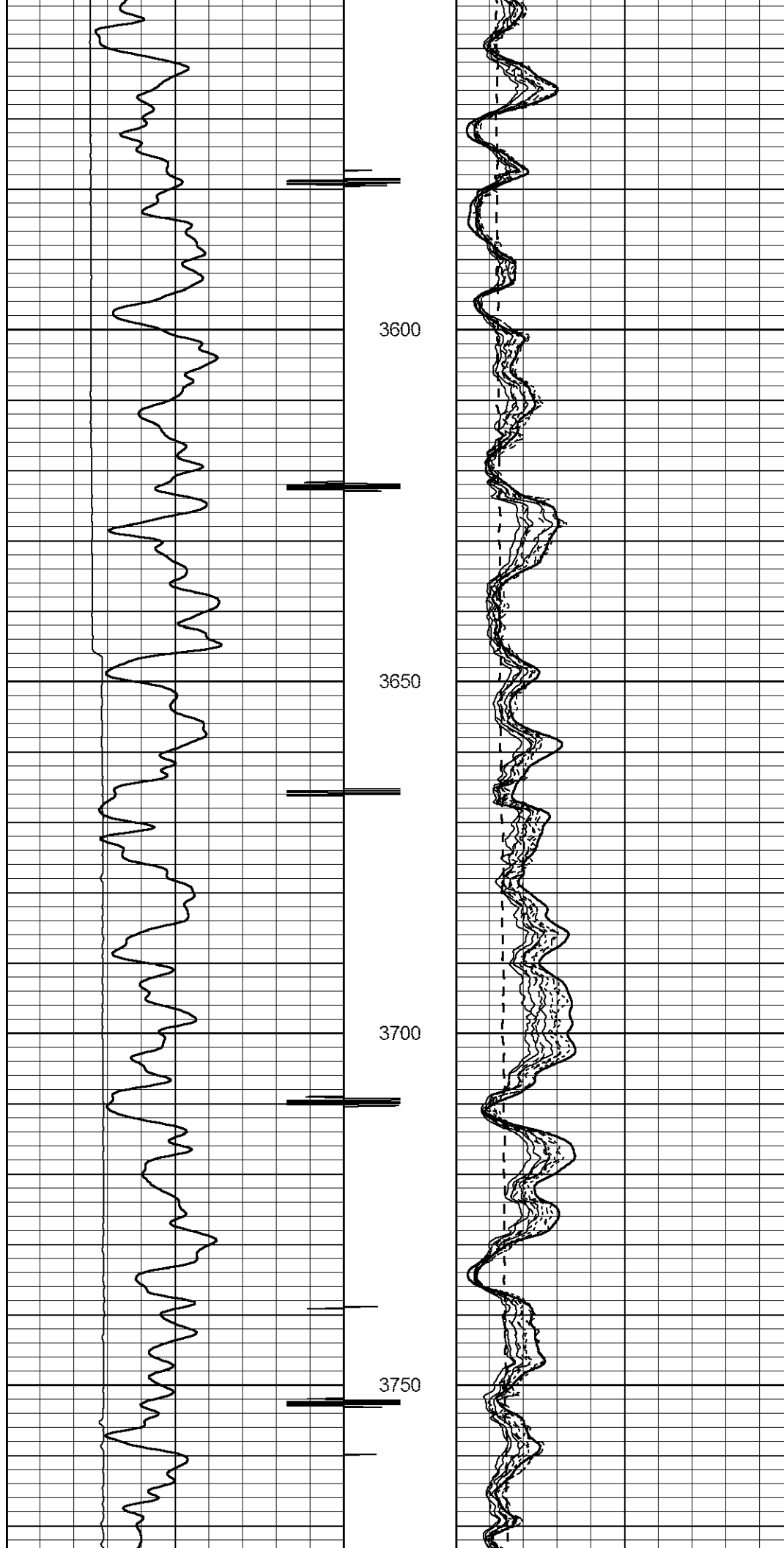


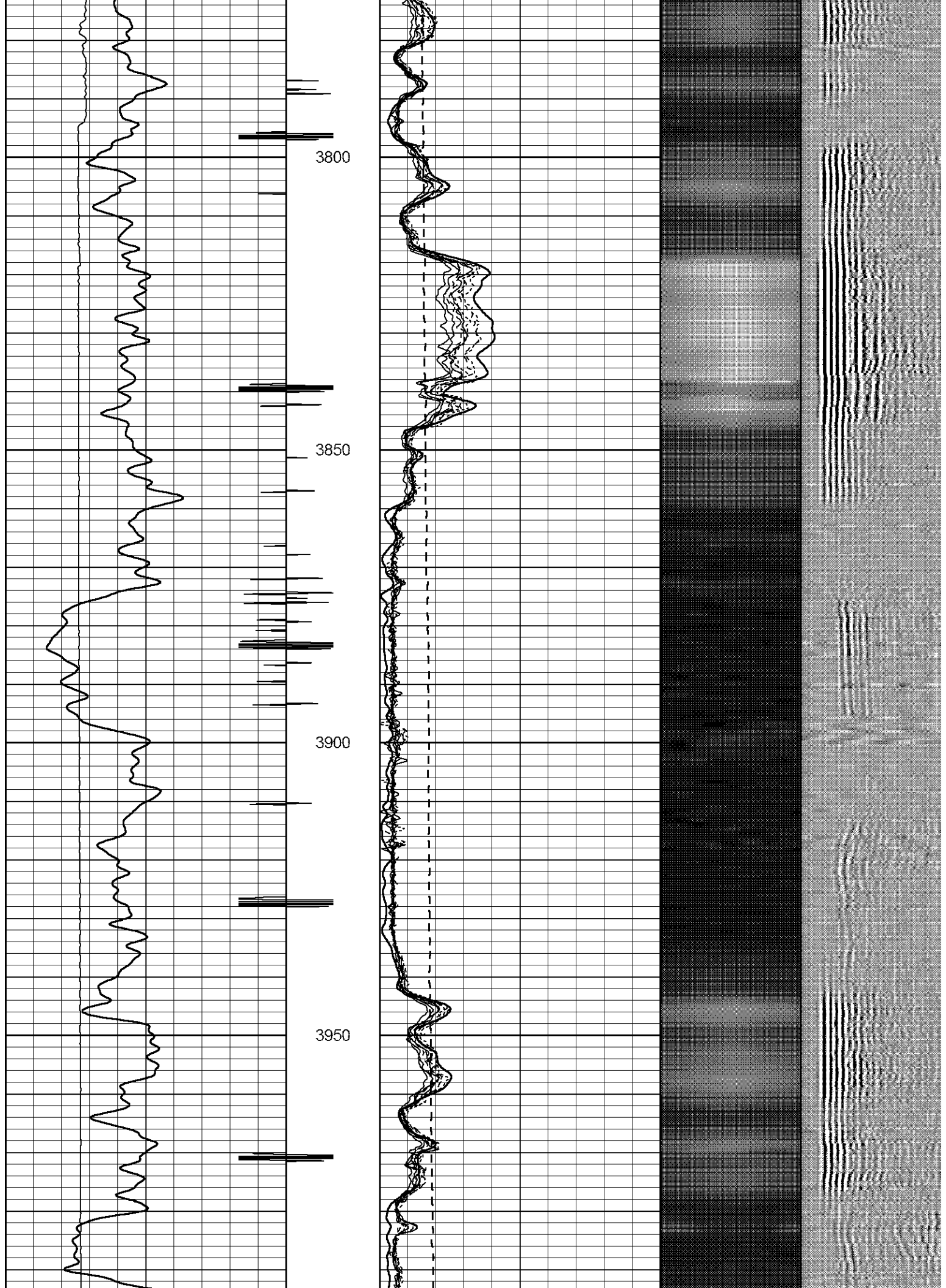


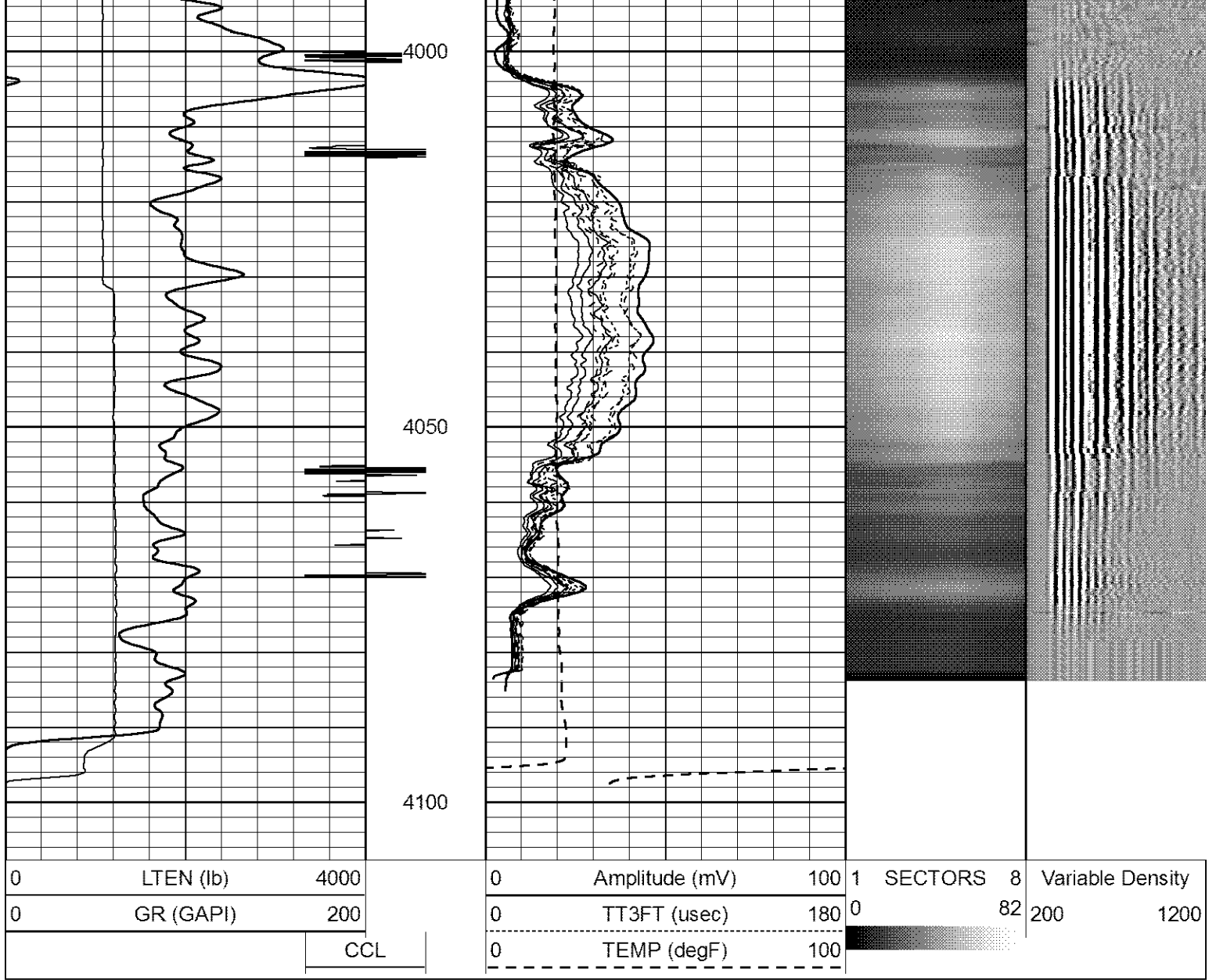


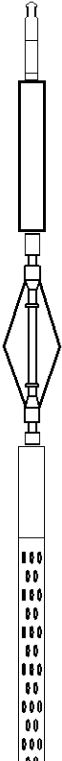










Sensor	Offset (ft)	Schematic	Description	Len (ft)	OD (in)	Wt (lb)
			titan	1.00	1.69	2.00
CCL	21.68		SNDX_CCL-SNDX_3_13_CCL (000001) CSS Gamma Ray/CCL (CCL Section)	1.92	3.13	11.02
			SONDEX	2.71	2.75	32.00

WVF3FT	13.92		SNDX_RBT-007 (000002) Radial Bond Tool - Analog 3 1/8	9.47	3.13	140.00
WVFS1	13.92					
WVFS2	13.92					
WVFS3	13.92					
WVFS4	13.92					
WVFS5	13.92					
WVFS6	13.92					
WVFS7	13.92					
WVFS8	13.92					
WVF5FT	12.92					
			SONDEX	2.71	2.75	32.00
GR	5.17		SNDX_GR-SNDX_3_13_GR (000001) Sondex Production Gamma Ray	2.94	3.13	22.05
			TEMP-SNDX_TEMP (SNDX_TEMP_01) Sondex Production Temperature Tool	3.14	1.63	10.00
TEMP	0.58					

Dataset: hmu11-9.db: field/well/run1/pass10  
 Total Length: 23.89 ft  
 Total Weight: 249.07 lb  
 O.D.: 3.13 in



Company: ENCANA OIL & GAS (USA) INC  
 Well: HMU 11-9 (P 11SW)  
 Field: MAMM CREEK  
 County: GARFIELD  
 State: COLORADO