

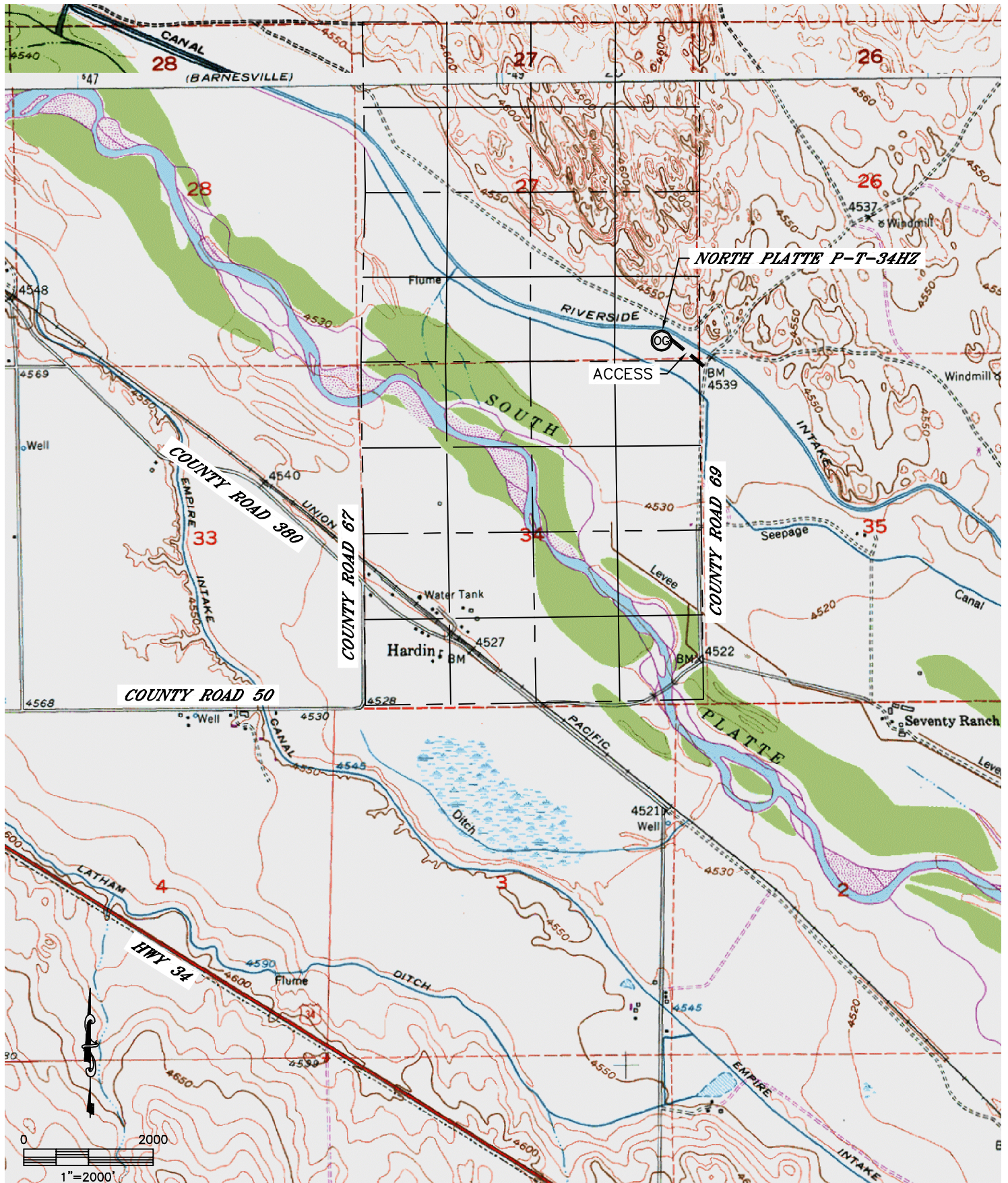


Lat40°, Inc. 1635 Foxtrail Drive, Suite 325 Loveland, CO 970-776-3321

ACCESS ROAD MAP

NORTH PLATTE P-T-34HZ

SECTION: 27
TOWNSHIP: 5N
RANGE: 63W



DATE: 4/5/12
PROJECT#: 2012051