

# CONSTRUCTION LAYOUT DRAWING

1 of 2

VEGETATION:  
WINTER WHEAT

SURFACE USE:  
AGRICULTURAL

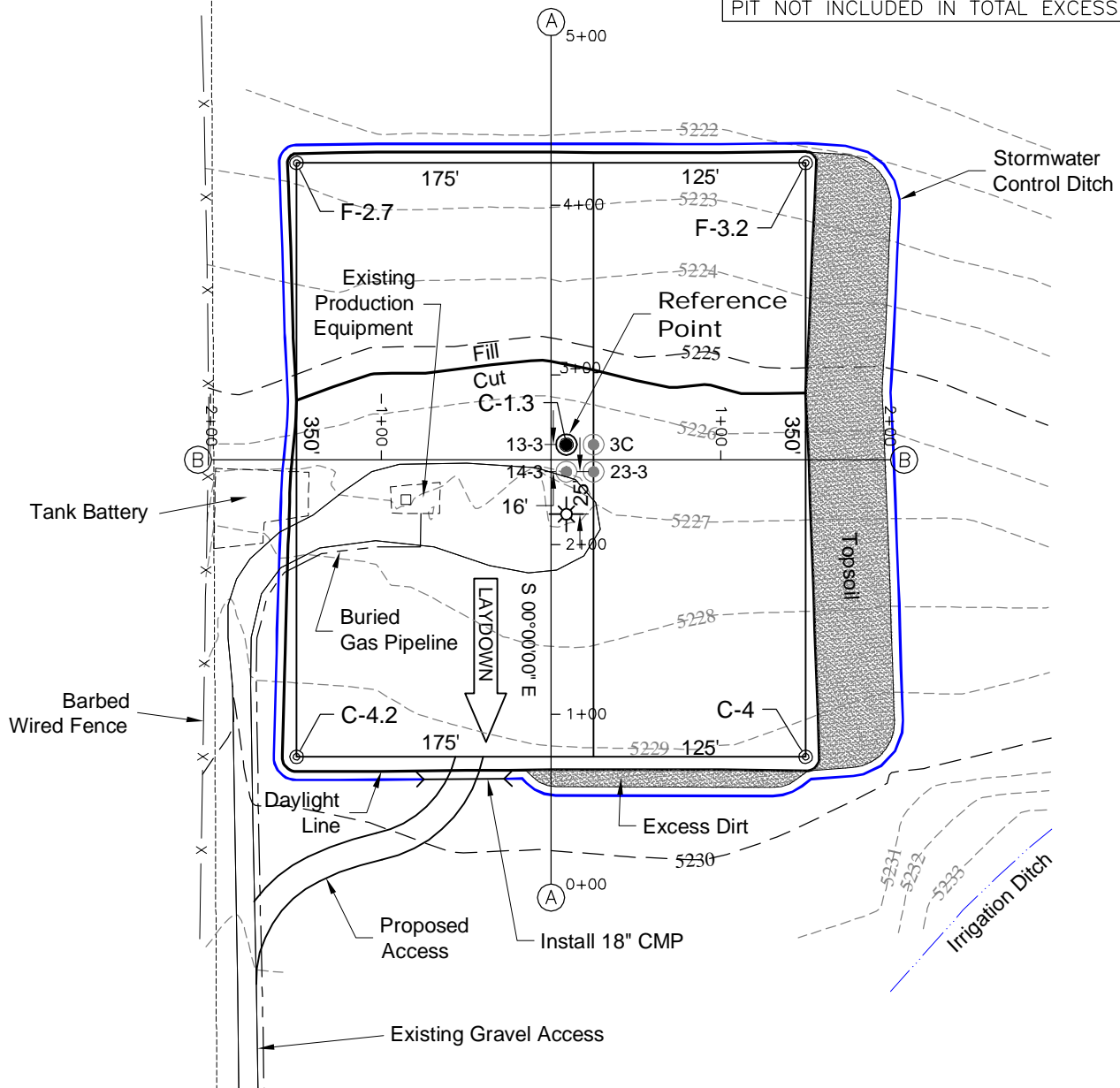
PAD 300'X350' ELEV= 5225.4'

DISTURBED AREA=3.3± ACRES

ESTIMATED DIRT QUANTITIES

CUTx10%	FILL	TOPSOIL	EXCESS
6,150	2,280	3,850	20

NOTE: VOLUMES IN CUBIC YARDS. TOPSOIL INCLUDED IN VOLUMES AT A DEPTH OF 12". PIT NOT INCLUDED IN TOTAL EXCESS.



NOTE:  
10% ALLOWANCE IS MADE FOR SOIL EXPANSION.

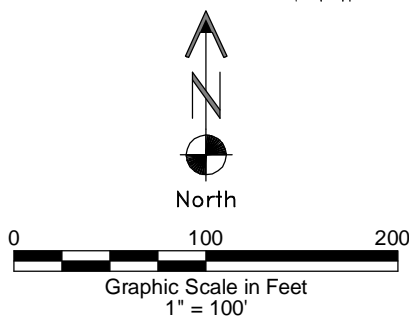
5/7/12

**GEOSURV**

LAND SURVEYING AND MAPPING  
LAFAYETTE - WINTER PARK  
Ph 303 666 0379 Fx 303 665 6320

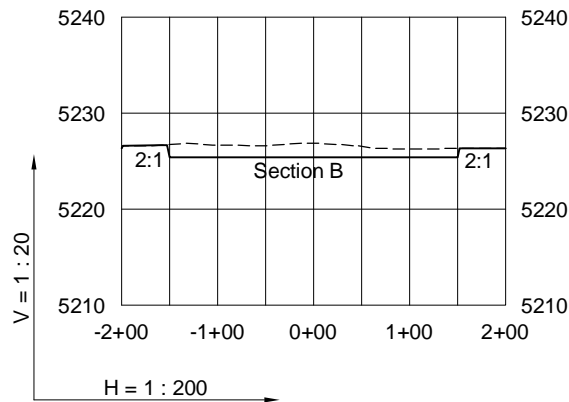
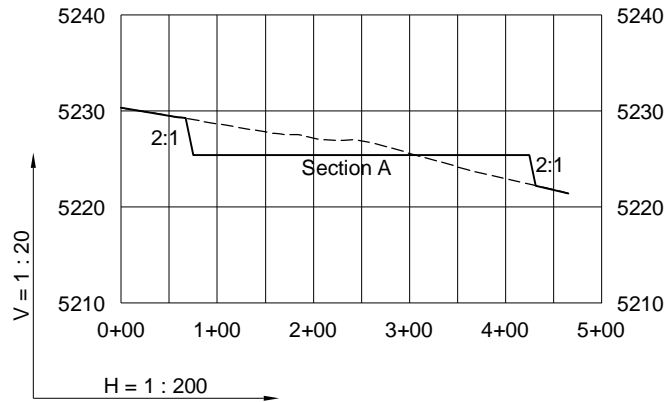
**SOVEREIGN OPERATING CO., LLC**  
WEBBER H UNIT 1 PAD

SE1/4 SW1/4 SECTION 3 T1S R68W  
6th PM BROOMFIELD COUNTY COLORADO



# CONSTRUCTION LAYOUT DRAWING

2 of 2



5/7/12

----- Existing Ground  
 \_\_\_\_\_ Proposed Grade



**SOVEREIGN OPERATING CO., LLC**  
**WEBBER H UNIT 1 PAD**

**SE1/4 SW1/4 SECTION 3 T1S R68W**  
**6th PM BROOMFIELD COUNTY COLORADO**