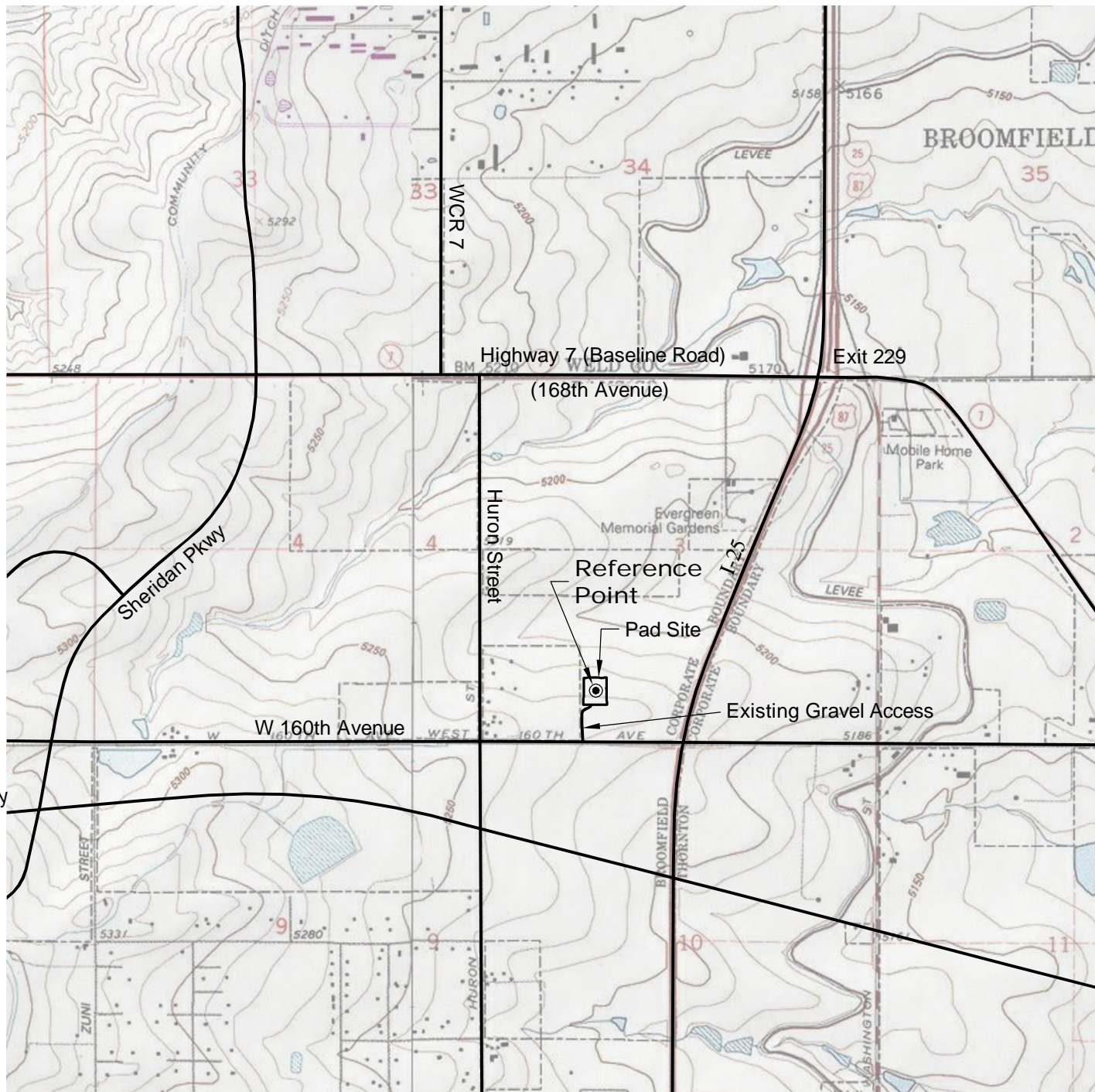


ACCESS ROAD MAP



DRIVING DIRECTIONS:

- MP 0.0 - Exit 229 off I-25; West along Highway 7 (Baseline Road)
- MP 0.9 - Left (South) on Huron Street;
- MP 1.9 - Left (East) on W 160th Avenue;
- MP 2.3 - Left (North) on gravel access to pad
- MP 2.4 - Webber H Unit 1 Pad

5/7/12



North



Graphic Scale in Feet
1" = 2000'



LAND SURVEYING AND MAPPING
LAFAYETTE - WINTER PARK
Ph 303 666 0379 Fx 303 665 6320

SOVEREIGN OPERATING CO., LLC
WEBBER H UNIT 1 PAD

SE1/4 SW1/4 SECTION 3 T1S R68W
6th PM BROOMFIELD COUNTY COLORADO