

LOCATION DRAWING

VEGETATION:
WINTER WHEAT

SURFACE USE:
AGRICULTURAL

REFERENCE POINT

LATITUDE: 39.98854

LONGITUDE: -104.99176

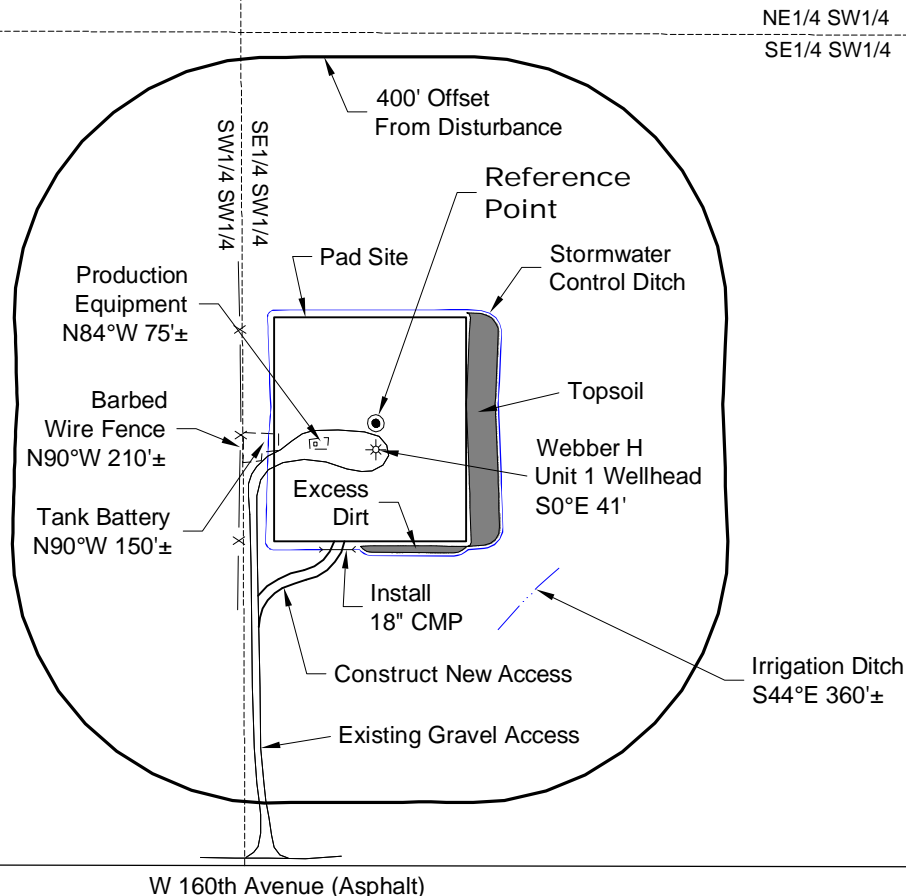
FOOTAGE: 691 FSL 1532 FWL

GROUND ELEVATION: 5226.7

PDOP: 2.0 DATE: 3/20/2012

INSTRUMENT OPERATOR:

MARC WOODARD



DISTURBANCE ACREAGE:
3.3± DRILLING OPERATIONS
1.5± INTERIM RECLAIM

NOTE:

ALL PRODUCTION FACILITIES WILL BE ON PAD.

5/7/12



0 300 600
Graphic Scale in Feet
1" = 300'



LAND SURVEYING AND MAPPING
LAFAYETTE - WINTER PARK
Ph 303 666 0379 Fx 303 665 6320

SOVEREIGN OPERATING CO., LLC
WEBBER H UNIT 1 PAD

SE1/4 SW1/4 SECTION 3 T1S R68W
6th PM BROOMFIELD COUNTY COLORADO