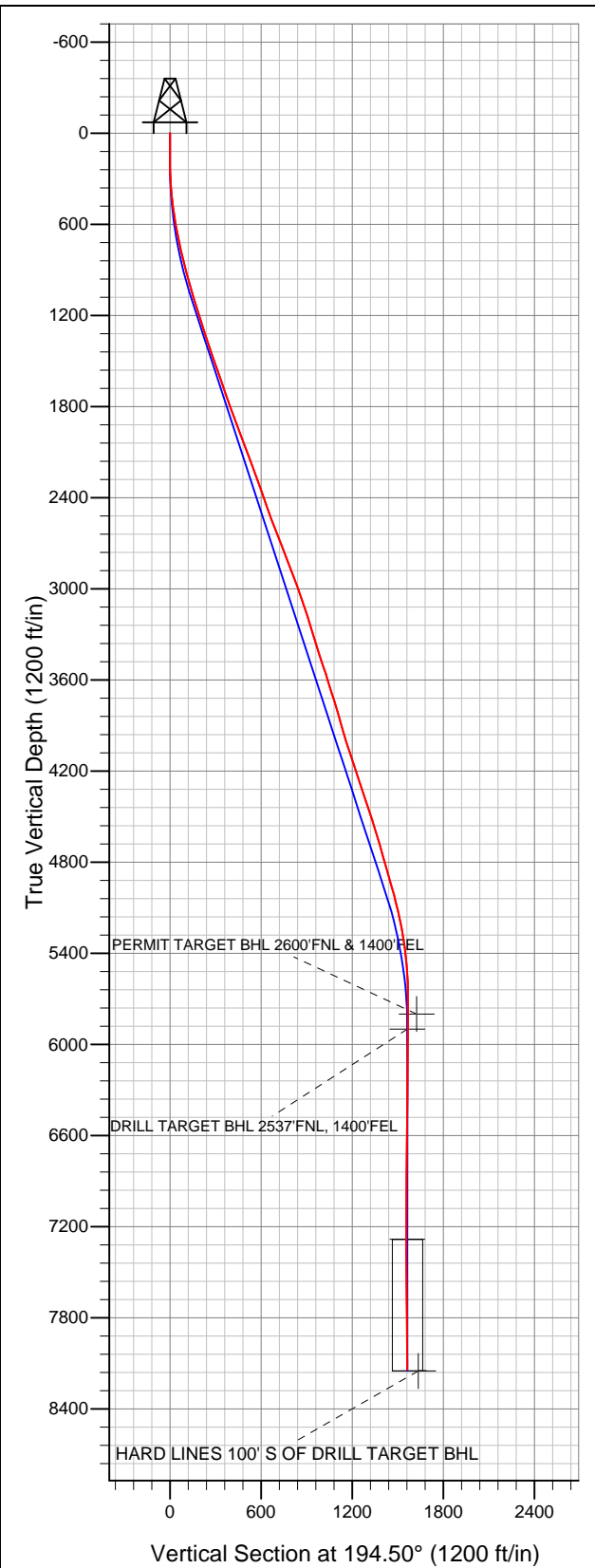


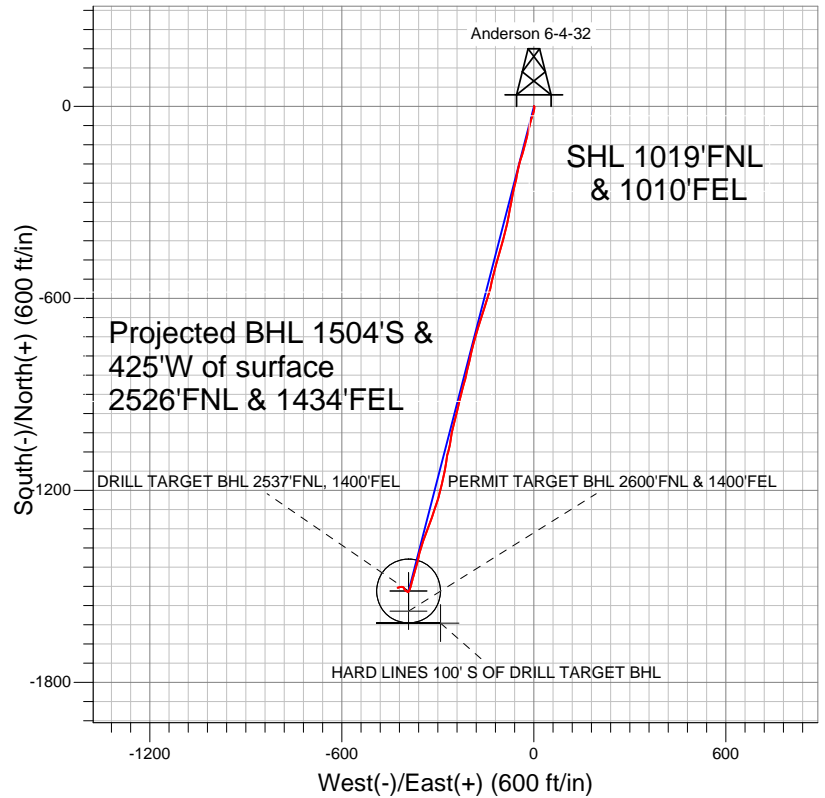
Well Name: Anderson 6-4-32

Surface Location: Anderson 6-4-32 Pad Sec.32-T2N-R68W
North American Datum 1983 US State Plane 1983Colorado Northern Zone
Ground Elevation: 4950.0

+N/-S	+E/-W	Northing	Easting	Latitude	Longitude	Slot
0.0	0.0	1279457.34	3133907.59	40.099510	-105.021320	
Original Well Elev		WELL @ 4963.0ft (Original Well Elev)				



EnCana Oil & Gas Weld County CO



- LEGEND
- Wellbore #1
 - Anderson 6-4-32, Wellbore #1, Plan #1 (5-18-12) R V0
 - Survey #1

Final Survey Plot

Projected Final Survey -
8385'MD & 8142'TVD @ 1562'VS
0.80 deg Inc 262.50 deg AZ

Project: SEC.32-T2N-R68W
Site: Anderson 6-4-32 Pad Sec.32-T2N-R68W
Well: Anderson 6-4-32
Plan: Wellbore #1



EnCana Oil & Gas Weld County CO

SEC.32-T2N-R68W

Anderson 6-4-32 Pad Sec.32-T2N-R68W

Anderson 6-4-32

Wellbore #1

Survey: Survey #1

Standard Survey Report

29 May, 2012

Company:	EnCana Oil & Gas Weld County CO	Local Co-ordinate Reference:	Well Anderson 6-4-32
Project:	SEC.32-T2N-R68W	TVD Reference:	WELL @ 4963.0ft (Original Well Elev)
Site:	Anderson 6-4-32 Pad Sec.32-T2N-R68W	MD Reference:	WELL @ 4963.0ft (Original Well Elev)
Well:	Anderson 6-4-32	North Reference:	True
Wellbore:	Wellbore #1	Survey Calculation Method:	Minimum Curvature
Design:	Wellbore #1	Database:	Landmark

Project	SEC.32-T2N-R68W, Weld County, Colorado		
Map System:	US State Plane 1983	System Datum:	Mean Sea Level
Geo Datum:	North American Datum 1983		Using Well Reference Point
Map Zone:	Colorado Northern Zone		Using geodetic scale factor

Site	Anderson 6-4-32 Pad Sec.32-T2N-R68W				
Site Position:		Northing:	1,279,457.34 ft	Latitude:	40.099510
From:	Lat/Long	Easting:	3,133,907.59 ft	Longitude:	-105.021320
Position Uncertainty:	0.0 ft	Slot Radius:	"	Grid Convergence:	0.31 °

Well	Anderson 6-4-32					
Well Position	+N-S	0.0 ft	Northing:	1,279,457.34 ft	Latitude:	40.099510
	+E-W	0.0 ft	Easting:	3,133,907.59 ft	Longitude:	-105.021320
Position Uncertainty		0.0 ft	Wellhead Elevation:	ft	Ground Level:	4,950.0 ft

Wellbore	Wellbore #1				
Magnetics	Model Name	Sample Date	Declination (°)	Dip Angle (°)	Field Strength (nT)
	IGRF2010	5/18/2012	8.85	66.73	52,847

Design	Wellbore #1				
Audit Notes:					
Version:	1.0	Phase:	ACTUAL	Tie On Depth:	0.0
Vertical Section:	Depth From (TVD) (ft)	+N/-S (ft)	+E/-W (ft)	Direction (°)	
	5,900.0	0.0	0.0	194.50	

Survey Program	Date	5/29/2012			
From (ft)	To (ft)	Survey (Wellbore)	Tool Name	Description	
71.0	8,385.0	Survey #1 (Wellbore #1)	MWD	MWD - Standard	

Survey										
Measured Depth (ft)	Inclination (°)	Azimuth (°)	Vertical Depth (ft)	+N/-S (ft)	+E/-W (ft)	Vertical Section (ft)	Dogleg Rate (°/100ft)	Build Rate (°/100ft)	Turn Rate (°/100ft)	
0.0	0.00	0.00	0.0	0.0	0.0	0.0	0.00	0.00	0.00	
71.0	0.40	80.80	71.0	0.0	0.2	-0.1	0.56	0.56	0.00	
162.0	0.40	125.60	162.0	-0.1	0.8	-0.1	0.34	0.00	49.23	
254.0	1.90	177.60	254.0	-1.8	1.1	1.5	1.83	1.63	56.52	
345.0	4.40	182.40	344.8	-6.8	1.1	6.3	2.76	2.75	5.27	
437.0	6.10	195.40	436.4	-15.0	-0.4	14.7	2.24	1.85	14.13	
529.0	8.20	197.80	527.7	-26.0	-3.7	26.1	2.31	2.28	2.61	
621.0	10.10	197.80	618.6	-39.9	-8.2	40.7	2.07	2.07	0.00	
712.0	11.90	193.10	707.9	-56.7	-12.7	58.0	2.21	1.98	-5.16	
786.0	13.70	193.80	780.0	-72.6	-16.5	74.4	2.44	2.43	0.95	
850.0	14.20	194.00	842.1	-87.6	-20.3	89.9	0.78	0.78	0.31	
889.0	13.80	192.70	880.0	-96.8	-22.4	99.3	1.30	-1.03	-3.33	
976.0	15.10	195.50	964.2	-117.8	-27.7	121.0	1.70	1.49	3.22	

Company:	EnCana Oil & Gas Weld County CO	Local Co-ordinate Reference:	Well Anderson 6-4-32
Project:	SEC.32-T2N-R68W	TVD Reference:	WELL @ 4963.0ft (Original Well Elev)
Site:	Anderson 6-4-32 Pad Sec.32-T2N-R68W	MD Reference:	WELL @ 4963.0ft (Original Well Elev)
Well:	Anderson 6-4-32	North Reference:	True
Wellbore:	Wellbore #1	Survey Calculation Method:	Minimum Curvature
Design:	Wellbore #1	Database:	Landmark

Survey										
Measured Depth (ft)	Inclination (°)	Azimuth (°)	Vertical Depth (ft)	+N/-S (ft)	+E/-W (ft)	Vertical Section (ft)	Dogleg Rate (°/100ft)	Build Rate (°/100ft)	Turn Rate (°/100ft)	
1,063.0	16.60	195.20	1,047.9	-140.7	-34.0	144.8	1.73	1.72	-0.34	
1,151.0	17.60	197.50	1,132.0	-165.5	-41.3	170.6	1.37	1.14	2.61	
1,238.0	17.40	192.60	1,215.0	-190.8	-48.1	196.8	1.71	-0.23	-5.63	
1,325.0	17.90	191.00	1,297.9	-216.6	-53.5	223.1	0.80	0.57	-1.84	
1,413.0	19.10	193.10	1,381.4	-243.9	-59.4	251.0	1.56	1.36	2.39	
1,500.0	18.60	191.70	1,463.7	-271.4	-65.4	279.1	0.77	-0.57	-1.61	
1,587.0	18.90	190.30	1,546.1	-298.8	-70.7	307.0	0.62	0.34	-1.61	
1,675.0	19.40	191.70	1,629.2	-327.1	-76.2	335.8	0.77	0.57	1.59	
1,762.0	19.90	189.00	1,711.2	-355.9	-81.5	365.0	1.19	0.57	-3.10	
1,849.0	20.30	194.80	1,792.9	-385.1	-87.7	394.8	2.34	0.46	6.67	
1,936.0	20.40	196.80	1,874.4	-414.2	-95.9	425.1	0.81	0.11	2.30	
2,024.0	18.60	194.50	1,957.4	-442.5	-103.8	454.4	2.22	-2.05	-2.61	
2,111.0	21.00	195.00	2,039.2	-471.0	-111.4	483.9	2.77	2.76	0.57	
2,198.0	21.70	194.80	2,120.3	-501.6	-119.5	515.6	0.81	0.80	-0.23	
2,286.0	20.40	195.50	2,202.4	-532.1	-127.8	547.2	1.50	-1.48	0.80	
2,373.0	20.00	191.70	2,284.0	-561.3	-134.8	577.2	1.58	-0.46	-4.37	
2,460.0	19.30	197.60	2,366.0	-589.6	-142.2	606.4	2.42	-0.80	6.78	
2,548.0	18.60	197.30	2,449.2	-616.8	-150.8	634.9	0.80	-0.80	-0.34	
2,635.0	19.70	198.50	2,531.4	-644.0	-159.5	663.4	1.34	1.26	1.38	
2,722.0	21.80	196.20	2,612.8	-673.4	-168.7	694.2	2.59	2.41	-2.64	
2,809.0	22.20	198.40	2,693.4	-704.5	-178.4	726.8	1.05	0.46	2.53	
2,897.0	21.70	193.80	2,775.0	-736.1	-187.5	759.6	2.03	-0.57	-5.23	
2,984.0	20.80	193.60	2,856.1	-766.7	-195.0	791.1	1.04	-1.03	-0.23	
3,071.0	20.40	193.10	2,937.6	-796.5	-202.1	821.7	0.50	-0.46	-0.57	
3,159.0	18.80	193.30	3,020.5	-825.3	-208.8	851.3	1.82	-1.82	0.23	
3,246.0	18.90	193.10	3,102.8	-852.6	-215.2	879.4	0.14	0.11	-0.23	
3,333.0	17.60	195.70	3,185.4	-879.0	-222.0	906.6	1.76	-1.49	2.99	
3,421.0	17.00	194.10	3,269.4	-904.3	-228.7	932.8	0.87	-0.68	-1.82	
3,508.0	17.30	192.70	3,352.6	-929.3	-234.6	958.4	0.59	0.34	-1.61	
3,595.0	18.00	193.80	3,435.5	-954.9	-240.7	984.8	0.89	0.80	1.26	
3,682.0	18.50	195.40	3,518.1	-981.3	-247.6	1,012.0	0.81	0.57	1.84	
3,770.0	16.90	192.90	3,601.9	-1,007.2	-254.1	1,038.8	2.01	-1.82	-2.84	
3,857.0	17.80	188.20	3,685.0	-1,032.7	-258.9	1,064.6	1.91	1.03	-5.40	
3,944.0	17.30	190.40	3,767.9	-1,058.6	-263.1	1,090.7	0.95	-0.57	2.53	
4,032.0	16.30	196.80	3,852.2	-1,083.3	-269.0	1,116.1	2.39	-1.14	7.27	
4,119.0	15.10	186.00	3,936.0	-1,106.3	-273.7	1,139.6	3.62	-1.38	-12.41	
4,206.0	18.30	189.40	4,019.3	-1,131.0	-277.1	1,164.4	3.84	3.68	3.91	
4,294.0	19.70	194.00	4,102.5	-1,159.0	-283.0	1,193.0	2.33	1.59	5.23	
4,381.0	17.90	193.80	4,184.8	-1,186.2	-289.7	1,221.0	2.07	-2.07	-0.23	
4,468.0	17.40	192.60	4,267.7	-1,211.9	-295.8	1,247.4	0.71	-0.57	-1.38	
4,555.0	18.50	198.50	4,350.5	-1,237.7	-303.0	1,274.1	2.44	1.26	6.78	
4,643.0	18.50	199.10	4,434.0	-1,264.1	-312.0	1,302.0	0.22	0.00	0.68	
4,730.0	18.70	198.70	4,516.4	-1,290.4	-321.0	1,329.7	0.27	0.23	-0.46	
4,817.0	17.10	200.60	4,599.2	-1,315.6	-329.9	1,356.3	1.96	-1.84	2.18	
4,905.0	15.90	202.90	4,683.6	-1,338.8	-339.2	1,381.1	1.55	-1.36	2.61	
4,992.0	15.60	197.60	4,767.3	-1,360.9	-347.4	1,404.5	1.69	-0.34	-6.09	
5,079.0	15.80	193.30	4,851.1	-1,383.6	-353.6	1,428.1	1.36	0.23	-4.94	
5,167.0	16.40	194.70	4,935.6	-1,407.3	-359.5	1,452.5	0.81	0.68	1.59	
5,254.0	15.40	196.10	5,019.3	-1,430.3	-365.8	1,476.3	1.23	-1.15	1.61	
5,341.0	13.50	196.10	5,103.5	-1,451.1	-371.9	1,498.0	2.18	-2.18	0.00	
5,428.0	11.80	196.10	5,188.4	-1,469.4	-377.1	1,517.0	1.95	-1.95	0.00	
5,516.0	9.10	194.50	5,275.0	-1,484.8	-381.4	1,533.0	3.09	-3.07	-1.82	
5,603.0	7.90	192.60	5,361.0	-1,497.3	-384.4	1,545.9	1.42	-1.38	-2.18	
5,690.0	5.40	203.30	5,447.4	-1,506.9	-387.3	1,555.9	3.20	-2.87	12.30	

Company:	EnCana Oil & Gas Weld County CO	Local Co-ordinate Reference:	Well Anderson 6-4-32
Project:	SEC.32-T2N-R68W	TVD Reference:	WELL @ 4963.0ft (Original Well Elev)
Site:	Anderson 6-4-32 Pad Sec.32-T2N-R68W	MD Reference:	WELL @ 4963.0ft (Original Well Elev)
Well:	Anderson 6-4-32	North Reference:	True
Wellbore:	Wellbore #1	Survey Calculation Method:	Minimum Curvature
Design:	Wellbore #1	Database:	Landmark

Survey									
Measured Depth (ft)	Inclination (°)	Azimuth (°)	Vertical Depth (ft)	+N/-S (ft)	+E/-W (ft)	Vertical Section (ft)	Dogleg Rate (°/100ft)	Build Rate (°/100ft)	Turn Rate (°/100ft)
5,778.0	4.10	204.90	5,535.1	-1,513.6	-390.3	1,563.1	1.48	-1.48	1.82
5,865.0	2.10	228.40	5,622.0	-1,517.4	-392.8	1,567.5	2.68	-2.30	27.01
5,952.0	1.40	324.40	5,709.0	-1,517.6	-394.6	1,568.1	3.04	-0.80	110.35
6,040.0	1.80	321.90	5,796.9	-1,515.7	-396.1	1,566.6	0.46	0.45	-2.84
6,042.1	1.78	321.35	5,799.0	-1,515.6	-396.1	1,566.5	1.36	-1.09	-25.94
PERMIT TARGET BHL 2600'FNL & 1400'FEL									
6,127.0	1.10	282.40	5,883.9	-1,514.4	-397.7	1,565.8	1.36	-0.80	-45.89
6,143.0	1.08	283.11	5,899.9	-1,514.3	-398.0	1,565.8	0.15	-0.12	4.43
DRILL TARGET BHL 2537'FNL, 1400'FEL									
6,301.0	0.90	291.70	6,057.9	-1,513.6	-400.7	1,565.7	0.15	-0.11	5.44
6,476.0	0.90	326.00	6,232.8	-1,511.9	-402.7	1,564.6	0.30	0.00	19.60
6,651.0	0.80	330.40	6,407.8	-1,509.7	-404.1	1,562.8	0.07	-0.06	2.51
6,825.0	0.90	331.10	6,581.8	-1,507.4	-405.3	1,560.9	0.06	0.06	0.40
7,000.0	0.70	353.30	6,756.8	-1,505.2	-406.1	1,558.9	0.21	-0.11	12.69
7,174.0	0.70	311.00	6,930.8	-1,503.4	-407.0	1,557.5	0.29	0.00	-24.31
7,349.0	0.90	288.00	7,105.8	-1,502.3	-409.2	1,556.9	0.21	0.11	-13.14
7,524.0	0.80	283.80	7,280.7	-1,501.6	-411.7	1,556.8	0.07	-0.06	-2.40
7,525.9	0.80	283.53	7,282.7	-1,501.6	-411.7	1,556.8	0.21	0.08	-14.12
TARGET CIRCLE 2537'FNL & 1400'FEL									
7,698.0	1.00	263.70	7,454.7	-1,501.5	-414.3	1,557.4	0.21	0.12	-11.52
7,873.0	1.50	260.10	7,629.7	-1,502.0	-418.1	1,558.9	0.29	0.29	-2.06
8,047.0	0.70	244.80	7,803.6	-1,502.9	-421.3	1,560.5	0.49	-0.46	-8.79
8,222.0	0.70	257.10	7,978.6	-1,503.6	-423.3	1,561.7	0.09	0.00	7.03
8,335.0	0.80	262.50	8,091.6	-1,503.8	-424.8	1,562.3	0.11	0.09	4.78
8,385.0	0.80	262.50	8,141.6	-1,503.9	-425.5	1,562.5	0.00	0.00	0.00
HARD LINES 100' S OF DRILL TARGET BHL									

Checked By: _____ Approved By: _____ Date: _____