

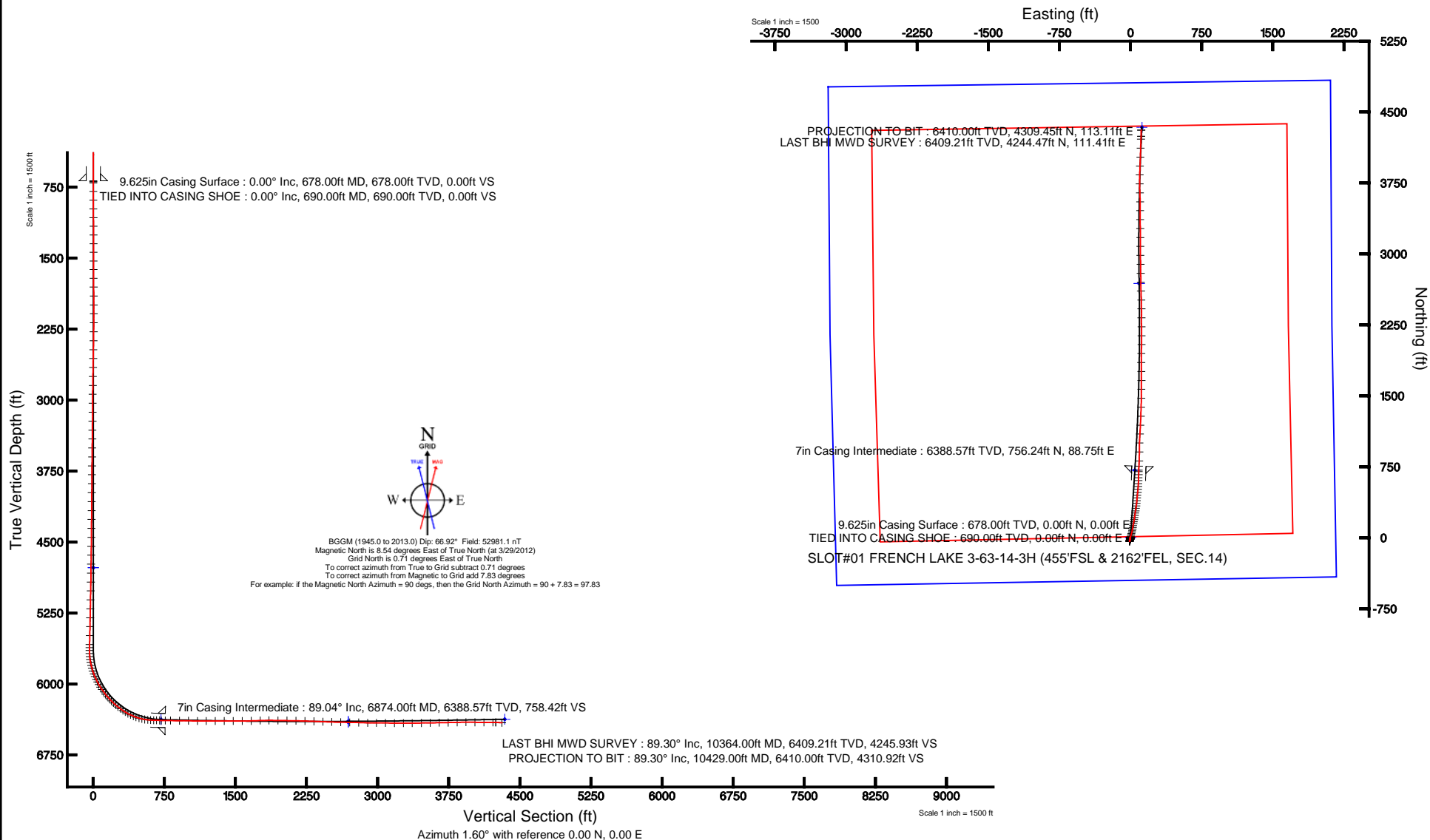


MARATHON OIL COMPANY

Location: COLORADO Slot: SLOT#01 FRENCH LAKE 3-63-14-3H (455'FSL & 2162'FEL, SEC.14)
Field: WELD COUNTY (NAD 83, GRID NORTH) Well: FRENCH LAKE 3-63-14-3H
Facility: SEC.14-T3N-63W Wellbore: FRENCH LAKE 3-63-14-3H PWB



Plot reference wellpath is FRENCH LAKE 3-63-14-3H (REV-8.0) PWP	
True vertical depths are referenced to H&P 449 (RKB)	Grid System: NAD83 / Lambert Colorado SP, Northern Zone (501), US feet
Measured depths are referenced to H&P 449 (RKB)	North Reference: Grid north
H&P 449 (RKB) to Mean Sea Level: 4771 feet	Scale: True distance
Mean Sea Level to Mud line (At Slot: SLOT#01 FRENCH LAKE 3-63-14-3H (455'FSL & 2162'FEL, SEC.14)): 0 feet	Depths are in feet
Coordinates are in feet referenced to Slot	Created by: cookdanm on 4/18/2012





Actual Wellpath Report

FRENCH LAKE 3-63-14-3H AWP

Page 1 of 6



REFERENCE WELLPATH IDENTIFICATION

Operator	MARATHON OIL COMPANY	Slot	SLOT#01 FRENCH LAKE 3-63-14-3H (455'FSL & 2162'FEL, SEC.14)
Area	COLORADO	Well	FRENCH LAKE 3-63-14-3H
Field	WELD COUNTY (NAD 83, GRID NORTH)	Wellbore	FRENCH LAKE 3-63-14-3H AWB
Facility	SEC.14-T3N-63W		

REPORT SETUP INFORMATION

Projection System	NAD83 / Lambert Colorado SP, Northern Zone (501), US feet	Software System	WellArchitect® 4.0.0
North Reference	Grid	User	Cookdanm
Scale	0.999957	Report Generated	4/18/2012 at 5:46:16 PM
Convergence at slot	0.71° East	Database/Source file	WA_Denver/FRENCH_LAKE_3-63-14-3H_AWB.xml

WELLPATH LOCATION

	Local coordinates		Grid coordinates		Geographic coordinates	
	North[ft]	East[ft]	Easting[US ft]	Northing[US ft]	Latitude	Longitude
Slot Location	0.50	-0.28	3306318.09	1324696.11	40°13'10.155"N	104°24'10.974"W
Facility Reference Pt			3306318.37	1324695.61	40°13'10.150"N	104°24'10.970"W
Field Reference Pt			3476081.76	1512960.14	40°43'43.704"N	103°46'55.829"W

WELLPATH DATUM

Calculation method	Minimum curvature	H&P 449 (RKB) to Facility Vertical Datum	4771.00ft
Horizontal Reference Pt	Slot	H&P 449 (RKB) to Mean Sea Level	4771.00ft
Vertical Reference Pt	H&P 449 (RKB)	H&P 449 (RKB) to Mud Line at Slot (SLOT#01 FRENCH LAKE 3-63-14-3H (455'FSL & 2162'FEL, SEC.14))	4771.00ft
MD Reference Pt	H&P 449 (RKB)	Section Origin	N 0.00, E 0.00 ft
Field Vertical Reference	Mean Sea Level	Section Azimuth	1.60°



Actual Wellpath Report

FRENCH LAKE 3-63-14-3H AWP

Page 2 of 6



REFERENCE WELLPATH IDENTIFICATION

Operator	MARATHON OIL COMPANY	Slot	SLOT#01 FRENCH LAKE 3-63-14-3H (455'FSL & 2162'FEL, SEC.14)
Area	COLORADO	Well	FRENCH LAKE 3-63-14-3H
Field	WELD COUNTY (NAD 83, GRID NORTH)	Wellbore	FRENCH LAKE 3-63-14-3H AWB
Facility	SEC.14-T3N-63W		

WELLPATH DATA (133 stations)

MD [ft]	Inclination [°]	Azimuth [°]	TVD [ft]	Vert Sect [ft]	North [ft]	East [ft]	Grid East [US ft]	Grid North [US ft]	Latitude	Longitude	DLS [°/100ft]	Comments
690.00	0.000	0.000	690.00	0.00	0.00	0.00	3306318.09	1324696.11	40°13'10.155"N	104°24'10.974"W	0.00	TIED INTO CASING SHOE
701.00	0.000	8.500	701.00	0.00	0.00	0.00	3306318.09	1324696.11	40°13'10.155"N	104°24'10.974"W	0.00	
793.00	0.100	280.400	793.00	0.01	0.01	-0.08	3306318.01	1324696.12	40°13'10.155"N	104°24'10.975"W	0.11	
885.00	0.500	323.100	885.00	0.34	0.35	-0.40	3306317.69	1324696.46	40°13'10.158"N	104°24'10.979"W	0.47	
977.00	0.300	282.900	977.00	0.70	0.72	-0.87	3306317.22	1324696.83	40°13'10.162"N	104°24'10.985"W	0.36	
1069.00	0.300	2.200	1069.00	0.99	1.02	-1.10	3306316.99	1324697.13	40°13'10.165"N	104°24'10.988"W	0.42	
1161.00	0.400	340.900	1160.99	1.53	1.56	-1.20	3306316.89	1324697.67	40°13'10.171"N	104°24'10.989"W	0.18	
1253.00	0.200	26.100	1252.99	1.98	2.01	-1.23	3306316.86	1324698.12	40°13'10.175"N	104°24'10.989"W	0.32	
1344.00	0.200	311.900	1343.99	2.22	2.26	-1.28	3306316.81	1324698.37	40°13'10.177"N	104°24'10.990"W	0.27	
1435.00	0.300	326.200	1434.99	2.52	2.56	-1.53	3306316.56	1324698.67	40°13'10.180"N	104°24'10.993"W	0.13	
1527.00	0.200	311.900	1526.99	2.82	2.87	-1.78	3306316.31	1324698.98	40°13'10.184"N	104°24'10.996"W	0.13	
1619.00	0.000	357.300	1618.99	2.92	2.98	-1.90	3306316.19	1324699.09	40°13'10.185"N	104°24'10.998"W	0.22	
1711.00	0.200	71.900	1710.99	2.98	3.03	-1.75	3306316.34	1324699.14	40°13'10.185"N	104°24'10.996"W	0.22	
1803.00	0.600	43.500	1802.99	3.39	3.43	-1.27	3306316.82	1324699.54	40°13'10.189"N	104°24'10.989"W	0.47	
1898.00	0.400	12.400	1897.98	4.09	4.11	-0.85	3306317.24	1324700.22	40°13'10.196"N	104°24'10.984"W	0.35	
1993.00	0.500	18.800	1992.98	4.81	4.83	-0.65	3306317.44	1324700.94	40°13'10.203"N	104°24'10.981"W	0.12	
2087.00	0.500	257.900	2086.98	5.10	5.13	-0.92	3306317.17	1324701.24	40°13'10.206"N	104°24'10.985"W	0.93	
2182.00	0.900	221.200	2181.97	4.43	4.48	-1.81	3306316.28	1324700.59	40°13'10.199"N	104°24'10.996"W	0.61	
2277.00	0.900	220.100	2276.96	3.27	3.35	-2.79	3306315.31	1324699.46	40°13'10.188"N	104°24'11.009"W	0.02	
2371.00	0.900	206.000	2370.95	2.02	2.12	-3.58	3306314.51	1324698.23	40°13'10.176"N	104°24'11.019"W	0.24	
2466.00	1.000	204.900	2465.94	0.58	0.70	-4.26	3306313.83	1324696.81	40°13'10.162"N	104°24'11.028"W	0.11	
2560.00	1.200	199.900	2559.92	-1.11	-0.97	-4.94	3306313.15	1324695.14	40°13'10.146"N	104°24'11.037"W	0.24	
2655.00	1.100	175.600	2654.90	-2.96	-2.81	-5.21	3306312.88	1324693.30	40°13'10.128"N	104°24'11.041"W	0.52	
2749.00	1.000	160.000	2748.88	-4.62	-4.48	-4.86	3306313.23	1324691.63	40°13'10.111"N	104°24'11.037"W	0.32	
2844.00	0.700	158.600	2843.87	-5.92	-5.80	-4.36	3306313.73	1324690.31	40°13'10.098"N	104°24'11.031"W	0.32	
2938.00	1.000	116.400	2937.86	-6.80	-6.70	-3.42	3306314.67	1324689.41	40°13'10.089"N	104°24'11.019"W	0.72	
3033.00	0.900	117.300	3032.85	-7.47	-7.41	-2.01	3306316.08	1324688.70	40°13'10.082"N	104°24'11.001"W	0.11	
3128.00	1.100	119.600	3127.84	-8.22	-8.21	-0.56	3306317.53	1324687.90	40°13'10.074"N	104°24'10.982"W	0.21	
3222.00	0.500	127.400	3221.83	-8.88	-8.90	0.55	3306318.64	1324687.21	40°13'10.067"N	104°24'10.968"W	0.65	
3317.00	0.600	197.000	3316.82	-9.60	-9.63	0.74	3306318.83	1324686.48	40°13'10.060"N	104°24'10.966"W	0.67	
3411.00	0.800	192.200	3410.82	-10.72	-10.74	0.45	3306318.54	1324685.37	40°13'10.049"N	104°24'10.969"W	0.22	
3506.00	0.900	199.100	3505.81	-12.09	-12.09	0.07	3306318.16	1324684.02	40°13'10.035"N	104°24'10.975"W	0.15	
3600.00	0.500	200.400	3599.80	-13.18	-13.18	-0.32	3306317.77	1324682.93	40°13'10.025"N	104°24'10.980"W	0.43	
3695.00	0.700	206.100	3694.79	-14.10	-14.09	-0.72	3306317.37	1324682.02	40°13'10.016"N	104°24'10.985"W	0.22	
3789.00	0.600	179.800	3788.79	-15.12	-15.09	-0.97	3306317.12	1324681.02	40°13'10.006"N	104°24'10.988"W	0.33	
3884.00	0.300	176.900	3883.79	-15.86	-15.84	-0.95	3306317.14	1324680.27	40°13'09.999"N	104°24'10.988"W	0.32	
3979.00	0.500	203.600	3978.78	-16.49	-16.47	-1.10	3306316.99	1324679.64	40°13'09.992"N	104°24'10.990"W	0.28	
4073.00	0.600	202.300	4072.78	-17.33	-17.30	-1.45	3306316.64	1324678.81	40°13'09.984"N	104°24'10.995"W	0.11	
4168.00	0.500	218.800	4167.77	-18.13	-18.08	-1.90	3306316.19	1324678.03	40°13'09.976"N	104°24'11.001"W	0.20	
4262.00	0.800	236.600	4261.77	-18.83	-18.76	-2.71	3306315.38	1324677.35	40°13'09.970"N	104°24'11.011"W	0.38	
4357.00	0.700	225.300	4356.76	-19.63	-19.54	-3.67	3306314.42	1324676.57	40°13'09.962"N	104°24'11.024"W	0.19	
4451.00	0.400	230.700	4450.76	-20.26	-20.15	-4.34	3306313.75	1324675.96	40°13'09.956"N	104°24'11.033"W	0.32	
4546.00	0.900	202.400	4545.75	-21.18	-21.05	-4.88	3306313.21	1324675.06	40°13'09.948"N	104°24'11.040"W	0.61	
4640.00	1.000	202.600	4639.74	-22.63	-22.49	-5.47	3306312.62	1324673.62	40°13'09.933"N	104°24'11.048"W	0.11	
4735.00	0.700	208.900	4734.73	-23.92	-23.76	-6.07	3306312.02	1324672.35	40°13'09.921"N	104°24'11.056"W	0.33	



Actual Wellpath Report

FRENCH LAKE 3-63-14-3H AWP

Page 3 of 6



REFERENCE WELLPATH IDENTIFICATION

Operator	MARATHON OIL COMPANY	Slot	SLOT#01 FRENCH LAKE 3-63-14-3H (455'FSL & 2162'FEL, SEC.14)
Area	COLORADO	Well	FRENCH LAKE 3-63-14-3H
Field	WELD COUNTY (NAD 83, GRID NORTH)	Wellbore	FRENCH LAKE 3-63-14-3H AWB
Facility	SEC.14-T3N-63W		

WELLPATH DATA (133 stations)

MD [ft]	Inclination [°]	Azimuth [°]	TVD [ft]	Vert Sect [ft]	North [ft]	East [ft]	Grid East [US ft]	Grid North [US ft]	Latitude	Longitude	DLS [°/100ft]	Comments
4829.00	0.800	212.000	4828.72	-25.00	-24.82	-6.70	3306311.39	1324671.29	40°13'09.911"N	104°24'11.064"W	0.11	
4924.00	1.100	206.600	4923.70	-26.40	-26.20	-7.46	3306310.63	1324669.91	40°13'09.897"N	104°24'11.074"W	0.33	
5018.00	1.300	213.000	5017.68	-28.12	-27.90	-8.44	3306309.65	1324668.21	40°13'09.880"N	104°24'11.087"W	0.26	
5113.00	1.200	206.100	5112.66	-29.95	-29.70	-9.47	3306308.62	1324666.41	40°13'09.863"N	104°24'11.100"W	0.19	
5207.00	1.200	187.500	5206.64	-31.82	-31.56	-10.03	3306308.06	1324664.56	40°13'09.844"N	104°24'11.108"W	0.41	
5302.00	1.300	184.500	5301.62	-33.89	-33.62	-10.24	3306307.85	1324662.49	40°13'09.824"N	104°24'11.111"W	0.13	
5396.00	1.000	182.000	5395.60	-35.78	-35.50	-10.36	3306307.74	1324660.61	40°13'09.805"N	104°24'11.113"W	0.32	
5491.00	1.300	165.000	5490.58	-37.64	-37.37	-10.11	3306307.99	1324658.74	40°13'09.787"N	104°24'11.110"W	0.47	
5585.00	1.300	170.200	5584.56	-39.70	-39.45	-9.65	3306308.44	1324656.66	40°13'09.766"N	104°24'11.104"W	0.13	
5617.00	1.100	174.300	5616.55	-40.36	-40.11	-9.56	3306308.53	1324656.00	40°13'09.760"N	104°24'11.103"W	0.68	
5649.00	0.200	84.000	5648.55	-40.66	-40.41	-9.47	3306308.62	1324655.70	40°13'09.757"N	104°24'11.102"W	3.50	
5680.00	2.400	13.900	5679.54	-40.02	-39.78	-9.26	3306308.83	1324656.33	40°13'09.763"N	104°24'11.099"W	7.55	
5712.00	5.200	10.600	5711.46	-37.93	-37.70	-8.83	3306309.26	1324658.41	40°13'09.783"N	104°24'11.093"W	8.77	
5743.00	7.700	10.200	5742.27	-34.49	-34.28	-8.21	3306309.88	1324661.84	40°13'09.817"N	104°24'11.085"W	8.07	
5775.00	10.100	10.800	5773.88	-29.60	-29.41	-7.30	3306310.79	1324666.70	40°13'09.865"N	104°24'11.072"W	7.51	
5806.00	13.300	11.900	5804.23	-23.41	-23.25	-6.06	3306312.04	1324672.86	40°13'09.926"N	104°24'11.055"W	10.35	
5838.00	16.000	12.700	5835.19	-15.46	-15.34	-4.33	3306313.76	1324680.77	40°13'10.004"N	104°24'11.032"W	8.46	
5869.00	18.500	13.200	5864.79	-6.45	-6.38	-2.26	3306315.83	1324689.73	40°13'10.092"N	104°24'11.004"W	8.08	
5901.00	21.300	13.500	5894.88	4.22	4.21	0.25	3306318.34	1324700.32	40°13'10.197"N	104°24'10.970"W	8.76	
5932.00	24.000	13.700	5923.48	15.89	15.81	3.06	3306321.15	1324711.92	40°13'10.311"N	104°24'10.932"W	8.71	
5964.00	25.800	14.500	5952.51	29.05	28.88	6.35	3306324.44	1324724.99	40°13'10.440"N	104°24'10.887"W	5.72	
5995.00	28.000	15.300	5980.15	42.69	42.43	9.96	3306328.05	1324738.54	40°13'10.573"N	104°24'10.838"W	7.19	
6027.00	30.300	14.100	6008.10	57.87	57.51	13.91	3306331.99	1324753.61	40°13'10.721"N	104°24'10.785"W	7.42	
6058.00	32.300	11.900	6034.58	73.66	73.20	17.52	3306335.61	1324769.31	40°13'10.876"N	104°24'10.736"W	7.43	
6090.00	35.100	10.500	6061.21	91.16	90.61	20.96	3306339.05	1324786.72	40°13'11.048"N	104°24'10.689"W	9.08	
6121.00	36.700	10.000	6086.32	109.13	108.50	24.19	3306342.28	1324804.61	40°13'11.224"N	104°24'10.644"W	5.25	
6153.00	38.500	10.200	6111.67	128.44	127.72	27.62	3306345.70	1324823.83	40°13'11.414"N	104°24'10.597"W	5.64	
6184.00	41.100	10.200	6135.48	148.06	147.25	31.13	3306349.22	1324843.35	40°13'11.606"N	104°24'10.549"W	8.39	
6216.00	42.900	10.500	6159.26	169.22	168.31	34.98	3306353.07	1324864.42	40°13'11.814"N	104°24'10.496"W	5.66	
6247.00	44.900	9.300	6181.60	190.49	189.49	38.67	3306356.76	1324885.59	40°13'12.023"N	104°24'10.445"W	6.99	
6279.00	47.200	8.700	6203.81	213.34	212.24	42.27	3306360.36	1324908.34	40°13'12.247"N	104°24'10.395"W	7.31	
6310.00	49.100	8.200	6224.49	236.26	235.08	45.66	3306363.75	1324931.18	40°13'12.472"N	104°24'10.348"W	6.25	
6342.00	51.500	8.800	6244.93	260.71	259.43	49.30	3306367.39	1324955.53	40°13'12.712"N	104°24'10.297"W	7.64	
6373.00	53.900	8.500	6263.71	285.18	283.81	53.01	3306371.10	1324979.90	40°13'12.953"N	104°24'10.245"W	7.78	
6405.00	56.400	8.700	6282.00	311.24	309.77	56.94	3306375.03	1325005.87	40°13'13.209"N	104°24'10.190"W	7.83	
6436.00	58.700	7.600	6298.63	337.23	335.66	60.64	3306378.73	1325031.76	40°13'13.464"N	104°24'10.138"W	8.00	
6468.00	61.500	6.900	6314.58	364.83	363.18	64.14	3306382.23	1325059.27	40°13'13.736"N	104°24'10.089"W	8.95	
6499.00	64.200	5.900	6328.72	392.31	390.59	67.21	3306385.30	1325086.68	40°13'14.006"N	104°24'10.045"W	9.17	
6531.00	67.300	5.300	6341.87	421.42	419.62	70.06	3306388.14	1325115.71	40°13'14.293"N	104°24'10.004"W	9.84	
6562.00	70.800	5.200	6352.95	450.30	448.45	72.71	3306390.79	1325144.54	40°13'14.577"N	104°24'09.965"W	11.29	
6594.00	73.900	5.500	6362.65	480.73	478.80	75.55	3306393.64	1325174.89	40°13'14.877"N	104°24'09.923"W	9.73	
6626.00	76.900	5.100	6370.71	511.63	509.64	78.41	3306396.50	1325205.72	40°13'15.181"N	104°24'09.882"W	9.45	
6657.00	80.200	3.900	6376.87	541.97	539.92	80.79	3306398.88	1325236.01	40°13'15.480"N	104°24'09.846"W	11.30	
6689.00	83.500	2.700	6381.40	573.62	571.54	82.61	3306400.70	1325267.62	40°13'15.792"N	104°24'09.818"W	10.96	
6720.00	86.600	2.400	6384.08	604.50	602.39	83.99	3306402.07	1325298.47	40°13'16.097"N	104°24'09.795"W	10.05	



Actual Wellpath Report

FRENCH LAKE 3-63-14-3H AWP

Page 4 of 6



REFERENCE WELLPATH IDENTIFICATION

Operator	MARATHON OIL COMPANY	Slot	SLOT#01 FRENCH LAKE 3-63-14-3H (455'FSL & 2162'FEL, SEC.14)
Area	COLORADO	Well	FRENCH LAKE 3-63-14-3H
Field	WELD COUNTY (NAD 83, GRID NORTH)	Wellbore	FRENCH LAKE 3-63-14-3H AWB
Facility	SEC.14-T3N-63W		

WELLPATH DATA (133 stations)

MD [ft]	Inclination [°]	Azimuth [°]	TVD [ft]	Vert Sect [ft]	North [ft]	East [ft]	Grid East [US ft]	Grid North [US ft]	Latitude	Longitude	DLS [°/100ft]	Comments
6752.00	88.100	1.500	6385.56	636.46	634.34	85.07	3306403.16	1325330.42	40°13'16.413"N	104°24'09.776"W	5.46	
6783.00	88.400	1.400	6386.50	667.45	665.31	85.86	3306403.94	1325361.39	40°13'16.719"N	104°24'09.761"W	1.02	
6815.00	88.600	1.900	6387.34	699.44	697.29	86.78	3306404.86	1325393.37	40°13'17.034"N	104°24'09.744"W	1.68	
6832.00	88.700	1.700	6387.74	716.43	714.27	87.31	3306405.40	1325410.35	40°13'17.202"N	104°24'09.734"W	1.32	
6930.00	89.500	2.900	6389.28	814.41	812.18	91.24	3306409.33	1325508.25	40°13'18.169"N	104°24'09.668"W	1.47	
7025.00	89.100	359.600	6390.44	909.39	907.14	93.32	3306411.40	1325603.21	40°13'19.107"N	104°24'09.626"W	3.50	
7119.00	89.300	2.200	6391.76	1003.37	1001.11	94.79	3306412.88	1325697.17	40°13'20.035"N	104°24'09.592"W	2.77	
7214.00	89.600	3.700	6392.67	1098.33	1095.97	99.68	3306417.77	1325792.04	40°13'20.972"N	104°24'09.514"W	1.61	
7308.00	89.700	2.600	6393.24	1192.29	1189.83	104.85	3306422.93	1325885.89	40°13'21.899"N	104°24'09.432"W	1.18	
7403.00	90.400	2.300	6393.16	1287.28	1284.74	108.91	3306426.99	1325980.79	40°13'22.836"N	104°24'09.365"W	0.80	
7497.00	89.700	1.700	6393.08	1381.28	1378.68	112.19	3306430.27	1326074.73	40°13'23.764"N	104°24'09.308"W	0.98	
7592.00	89.400	0.800	6393.82	1476.27	1473.66	114.26	3306432.35	1326169.70	40°13'24.702"N	104°24'09.266"W	1.00	
7687.00	90.500	0.200	6393.91	1571.25	1568.65	115.09	3306433.17	1326264.69	40°13'25.641"N	104°24'09.240"W	1.32	
7781.00	91.700	0.100	6392.10	1665.21	1662.63	115.34	3306433.42	1326358.67	40°13'26.570"N	104°24'09.222"W	1.28	
7876.00	92.100	359.100	6388.95	1760.09	1757.58	114.67	3306432.76	1326453.61	40°13'27.508"N	104°24'09.215"W	1.13	
7970.00	90.200	359.300	6387.06	1853.99	1851.54	113.36	3306431.45	1326547.57	40°13'28.437"N	104°24'09.217"W	2.03	
8065.00	89.100	2.000	6387.65	1948.96	1946.53	114.44	3306432.52	1326642.55	40°13'29.375"N	104°24'09.188"W	3.07	
8160.00	88.600	0.400	6389.55	2043.94	2041.48	116.43	3306434.51	1326737.50	40°13'30.313"N	104°24'09.147"W	1.76	
8254.00	89.300	1.000	6391.27	2137.91	2135.46	117.58	3306435.66	1326831.47	40°13'31.241"N	104°24'09.117"W	0.98	
8349.00	88.000	357.500	6393.51	2232.79	2230.41	116.33	3306434.42	1326926.42	40°13'32.180"N	104°24'09.118"W	3.93	
8443.00	87.800	1.400	6396.96	2326.64	2324.32	115.43	3306433.52	1327020.33	40°13'33.108"N	104°24'09.115"W	4.15	
8538.00	87.500	358.500	6400.86	2421.51	2419.23	115.35	3306433.43	1327115.23	40°13'34.046"N	104°24'09.101"W	3.07	
8632.00	88.600	359.200	6404.05	2515.35	2513.16	113.46	3306431.55	1327209.15	40°13'34.974"N	104°24'09.110"W	1.39	
8727.00	88.800	357.500	6406.21	2610.16	2608.09	110.73	3306428.81	1327304.08	40°13'35.912"N	104°24'09.130"W	1.80	
8821.00	89.400	359.800	6407.69	2704.02	2702.04	108.52	3306426.60	1327398.03	40°13'36.841"N	104°24'09.144"W	2.53	
8916.00	88.100	359.500	6409.76	2798.94	2797.02	107.94	3306426.02	1327493.00	40°13'37.780"N	104°24'09.136"W	1.40	
9011.00	88.400	358.700	6412.66	2893.81	2891.96	106.44	3306424.53	1327587.94	40°13'38.718"N	104°24'09.140"W	0.90	
9105.00	90.100	359.800	6413.89	2987.71	2985.94	105.21	3306423.30	1327681.92	40°13'39.647"N	104°24'09.141"W	2.15	
9200.00	89.500	359.900	6414.22	3082.67	3080.94	104.97	3306423.05	1327776.91	40°13'40.585"N	104°24'09.129"W	0.64	
9294.00	89.300	359.500	6415.21	3176.61	3174.93	104.47	3306422.56	1327870.90	40°13'41.514"N	104°24'09.120"W	0.48	
9389.00	90.200	359.200	6415.62	3271.54	3269.92	103.40	3306421.48	1327965.89	40°13'42.453"N	104°24'09.119"W	1.00	
9483.00	90.100	359.800	6415.37	3365.47	3363.92	102.57	3306420.66	1328059.88	40°13'43.382"N	104°24'09.115"W	0.65	
9578.00	90.900	359.800	6414.55	3460.42	3458.91	102.24	3306420.33	1328154.87	40°13'44.321"N	104°24'09.104"W	0.84	
9672.00	90.800	359.300	6413.15	3554.35	3552.90	101.51	3306419.59	1328248.85	40°13'45.249"N	104°24'09.098"W	0.54	
9767.00	91.100	357.500	6411.58	3649.18	3647.85	98.85	3306416.94	1328343.79	40°13'46.188"N	104°24'09.117"W	1.92	
9861.00	91.200	359.300	6409.69	3743.02	3741.79	96.23	3306414.31	1328437.73	40°13'47.116"N	104°24'09.136"W	1.92	
9956.00	91.200	1.600	6407.70	3837.97	3836.76	96.98	3306415.06	1328532.69	40°13'48.055"N	104°24'09.111"W	2.42	
10050.00	90.300	2.300	6406.47	3931.96	3930.69	100.17	3306418.26	1328626.63	40°13'48.983"N	104°24'09.055"W	1.21	
10145.00	89.200	2.300	6406.88	4026.95	4025.61	103.99	3306422.07	1328721.54	40°13'49.920"N	104°24'08.991"W	1.16	
10240.00	89.300	1.600	6408.13	4121.94	4120.55	107.22	3306425.30	1328816.48	40°13'50.858"N	104°24'08.934"W	0.74	
10334.00	89.700	2.300	6408.95	4215.93	4214.49	110.42	3306428.50	1328910.41	40°13'51.786"N	104°24'08.878"W	0.86	
10364.00	89.300	1.500	6409.21	4245.93	4244.47	111.41	3306429.50	1328940.39	40°13'52.082"N	104°24'08.860"W	2.98	LAST BHI MWD SURVEY
10429.00	89.300	1.500	6410.00	4310.92	4309.45	113.11	3306431.20	1329005.36	40°13'52.724"N	104°24'08.828"W	0.00	PROJECTION TO BIT



Actual Wellpath Report

FRENCH LAKE 3-63-14-3H AWP

Page 5 of 6



REFERENCE WELLPATH IDENTIFICATION

Operator	MARATHON OIL COMPANY	Slot	SLOT#01 FRENCH LAKE 3-63-14-3H (455'FSL & 2162'FEL, SEC.14)
Area	COLORADO	Well	FRENCH LAKE 3-63-14-3H
Field	WELD COUNTY (NAD 83, GRID NORTH)	Wellbore	FRENCH LAKE 3-63-14-3H AWB
Facility	SEC.14-T3N-63W		

HOLE & CASING SECTIONS - Ref Wellbore: FRENCH LAKE 3-63-14-3H AWB Ref Wellpath: FRENCH LAKE 3-63-14-3H AWP

String/Diameter	Start MD [ft]	End MD [ft]	Interval [ft]	Start TVD [ft]	End TVD [ft]	Start N/S [ft]	Start E/W [ft]	End N/S [ft]	End E/W [ft]
9.625in Casing Surface	25.00	678.00	653.00	25.00	678.00	0.00	0.00	0.00	0.00
8.75in Open Hole	678.00	6890.00	6212.00	678.00	6388.82	0.00	0.00	772.23	89.39
7in Casing Intermediate	25.00	6874.00	6849.00	25.00	6388.57	0.00	0.00	756.24	88.75
6in Open Hole	6890.00	10429.00	3539.00	6388.82	6410.00	772.23	89.39	4309.45	113.11

TARGETS

Name	MD [ft]	TVD [ft]	North [ft]	East [ft]	Grid East [US ft]	Grid North [US ft]	Latitude	Longitude	Shape
FRENCH LAKE 3-63-14-3H HARDLINES (460' SETBACKS)		4771.00	0.00	0.00	3306318.09	1324696.11	40°13'10.155"N	104°24'10.974"W	polygon
FRENCH LAKE 3-63-14-3H SECTION LINES		4771.00	0.00	0.00	3306318.09	1324696.11	40°13'10.155"N	104°24'10.974"W	polygon
FRENCH LAKE 3-63-14-3H BHL ON PLAT (470'FNL & 1988'FEL, REV-1)		6375.00	4339.18	121.28	3306439.36	1329035.09	40°13'53.016"N	104°24'08.718"W	point
FRENCH LAKE 3-63-14-3H LANDING (REV-1)		6378.00	714.00	46.00	3306364.09	1325410.08	40°13'17.204"N	104°24'10.267"W	point
FRENCH LAKE 3-63-14-3H PT#2 (REV-2)		6397.00	2688.40	91.58	3306409.67	1327384.39	40°13'36.708"N	104°24'09.364"W	point
FRENCH LAKE 3-63-14-3H PT#2 (REV-1)		6407.00	2688.40	91.58	3306409.67	1327384.39	40°13'36.708"N	104°24'09.364"W	point

WELLPATH COMPOSITION - Ref Wellbore: FRENCH LAKE 3-63-14-3H AWB Ref Wellpath: FRENCH LAKE 3-63-14-3H AWP

Start MD [ft]	End MD [ft]	Positional Uncertainty Model	Log Name/Comment	Wellbore
25.00	690.00	Drift Indicator (Standard)	ASSUMED VERTICAL TO CASING SHOE <690>	FRENCH LAKE 3-63-14-3H AWB
690.00	6930.00	NaviTrak (Standard)	BHI/NAVITRAK MWD 8.75" - <701-6930>	FRENCH LAKE 3-63-14-3H AWB
6930.00	10364.00	OnTrak (Standard)	BHI/NAVITRAK MWD 6" - <7025-10364>	FRENCH LAKE 3-63-14-3H AWB
10364.00	10429.00	Blind Drilling (std)	Projection to bit	FRENCH LAKE 3-63-14-3H AWB

**Actual Wellpath Report****FRENCH LAKE 3-63-14-3H AWP**

Page 6 of 6

**REFERENCE WELLPATH IDENTIFICATION**

Operator	MARATHON OIL COMPANY	Slot	SLOT#01 FRENCH LAKE 3-63-14-3H (455'FSL & 2162'FEL, SEC.14)
Area	COLORADO	Well	FRENCH LAKE 3-63-14-3H
Field	WELD COUNTY (NAD 83, GRID NORTH)	Wellbore	FRENCH LAKE 3-63-14-3H AWB
Facility	SEC.14-T3N-63W		

WELLPATH COMMENTS

MD [ft]	Inclination [°]	Azimuth [°]	TVD [ft]	Comment
690.00	0.000	0.000	690.00	TIED INTO CASING SHOE
10364.00	89.300	1.500	6409.21	LAST BHI MWD SURVEY
10429.00	89.300	1.500	6410.00	PROJECTION TO BIT