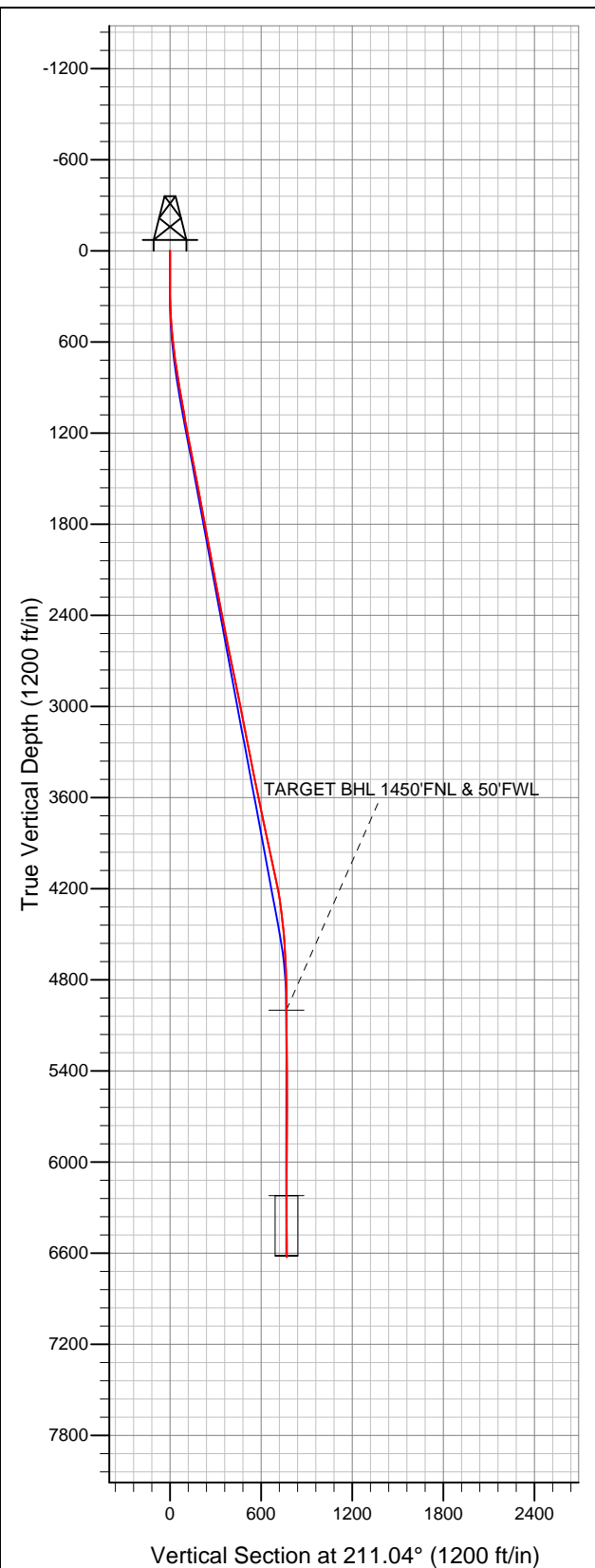


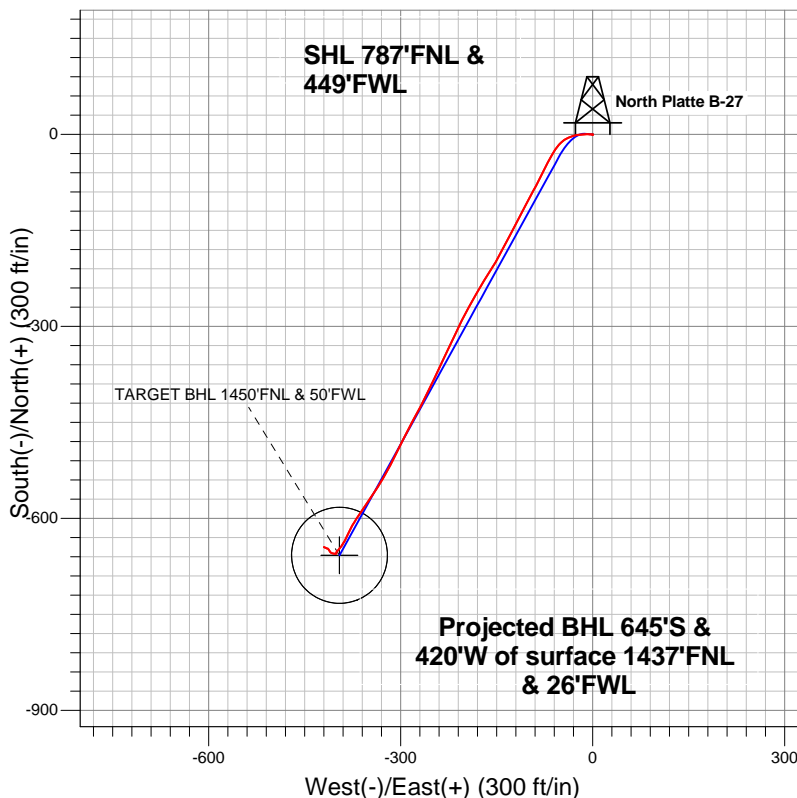
**Well Name: North Platte B-27**

Surface Location: 70 Ranch 11-27 Pad Sec.27-T5N-R63W  
North American Datum 1983 US State Plane 1983Colorado Northern Zone  
Ground Elevation: 4545.0

+N/-S	+E/-W	Northing	Easting	Latitude	Longitude	Slot
0.0	0.0	1381442.68	3298245.75	40.375520	-104.429500	
Original Well Elev			WELL @ 4560.0ft (Original Well Elev)			



**BONANZA CREEK ENERGY OPERATING**



**LEGEND**

- Wellbore #1
- North Platte B-27, Wellbore #1, Plan #1 (MAY 13, 2012)R V0
- Survey #1

**Final Survey Plot**

Projected Final Survey -  
6698'MD & 6626'TVD @ 769'VS  
0.70 deg Inc 286.10 deg AZ

Project: SEC.27-T5N-R63W  
Site: 70 Ranch 11-27 Pad Sec.27-T5N-R63W  
Well: North Platte B-27  
Plan: Wellbore #1



# **BONANZA CREEK ENERGY OPERATING**

**SEC.27-T5N-R63W**

**70 Ranch 11-27 Pad Sec.27-T5N-R63W**

**North Platte B-27**

**Wellbore #1**

**Survey: Survey #1**

## **Standard Survey Report**

**19 July, 2012**

<b>Company:</b>	BONANZA CREEK ENERGY OPERATING	<b>Local Co-ordinate Reference:</b>	Well North Platte B-27
<b>Project:</b>	SEC.27-T5N-R63W	<b>TVD Reference:</b>	WELL @ 4560.0ft (Original Well Elev)
<b>Site:</b>	70 Ranch 11-27 Pad Sec.27-T5N-R63W	<b>MD Reference:</b>	WELL @ 4560.0ft (Original Well Elev)
<b>Well:</b>	North Platte B-27	<b>North Reference:</b>	True
<b>Wellbore:</b>	Wellbore #1	<b>Survey Calculation Method:</b>	Minimum Curvature
<b>Design:</b>	Wellbore #1	<b>Database:</b>	Landmark

<b>Project</b>	SEC.27-T5N-R63W, Weld County, CO		
<b>Map System:</b>	US State Plane 1983	<b>System Datum:</b>	Mean Sea Level
<b>Geo Datum:</b>	North American Datum 1983		Using Well Reference Point
<b>Map Zone:</b>	Colorado Northern Zone		Using geodetic scale factor

Site	70 Ranch 11-27 Pad Sec.27-T5N-R63W				
Site Position:		Northing:	1,381,441.95ft	Latitude:	40.375518
From:	Lat/Long	Easting:	3,298,245.20ft	Longitude:	-104.429502
Position Uncertainty:	0.0 ft	Slot Radius:	"	Grid Convergence:	0.69 °

Well	North Platte B-27					
Well Position	+N/-S	0.0 ft	Northing:	1,381,442.68 ft	Latitude:	40.375520
	+E/-W	0.0 ft	Easting:	3,298,245.75 ft	Longitude:	-104.429500
Position Uncertainty		0.0 ft	Wellhead Elevation:	ft	Ground Level:	4,545.0 ft

<b>Wellbore</b>	Wellbore #1				
<b>Magnetics</b>	<b>Model Name</b>	<b>Sample Date</b>	<b>Declination (°)</b>	<b>Dip Angle (°)</b>	<b>Field Strength (nT)</b>
	IGRF2010	5/13/2012	8.56	67.05	53,060

<b>Design</b>	Wellbore #1				
<b>Audit Notes:</b>					
<b>Version:</b>	1.0	<b>Phase:</b>	ACTUAL	<b>Tie On Depth:</b>	0.0
<b>Vertical Section:</b>	<b>Depth From (TVD) (ft)</b>	<b>+N/-S (ft)</b>	<b>+E/-W (ft)</b>	<b>Direction (°)</b>	
	0.0	0.0	0.0	211.04	

<b>Survey Program</b>	<b>Date</b>	7/19/2012			
<b>From (ft)</b>	<b>To (ft)</b>	<b>Survey (Wellbore)</b>	<b>Tool Name</b>	<b>Description</b>	
119.0	6,698.0	Survey #1 (Wellbore #1)	MWD	MWD - Standard	

<b>Survey</b>										
<b>Measured Depth (ft)</b>	<b>Inclination (°)</b>	<b>Azimuth (°)</b>	<b>Vertical Depth (ft)</b>	<b>+N/-S (ft)</b>	<b>+E/-W (ft)</b>	<b>Vertical Section (ft)</b>	<b>Dogleg Rate (°/100ft)</b>	<b>Build Rate (°/100ft)</b>	<b>Turn Rate (°/100ft)</b>	
0.0	0.00	0.00	0.0	0.0	0.0	0.0	0.00	0.00	0.00	
119.0	0.50	110.70	119.0	-0.2	0.5	-0.1	0.42	0.42	0.00	
204.0	0.30	230.20	204.0	-0.5	0.7	0.1	0.82	-0.24	140.59	
298.0	2.20	282.10	298.0	-0.2	-1.3	0.9	2.16	2.02	55.21	
390.0	5.20	272.20	389.8	0.3	-7.2	3.5	3.32	3.26	-10.76	
443.0	6.80	266.80	442.5	0.2	-12.7	6.4	3.20	3.02	-10.19	
519.0	7.10	263.30	517.9	-0.6	-21.9	11.8	0.68	0.39	-4.61	
641.0	8.70	246.60	638.8	-5.1	-37.8	23.9	2.28	1.31	-13.69	
765.0	8.90	221.10	761.4	-16.1	-52.8	41.0	3.12	0.16	-20.56	
886.0	9.20	208.60	880.9	-31.6	-63.5	59.9	1.64	0.25	-10.33	
1,008.0	10.30	207.70	1,001.1	-49.9	-73.3	80.5	0.91	0.90	-0.74	
1,130.0	9.20	206.00	1,121.3	-68.3	-82.6	101.1	0.93	-0.90	-1.39	
1,253.0	11.30	208.20	1,242.4	-87.7	-92.6	122.9	1.74	1.71	1.79	

<b>Company:</b>	BONANZA CREEK ENERGY OPERATING	<b>Local Co-ordinate Reference:</b>	Well North Platte B-27
<b>Project:</b>	SEC.27-T5N-R63W	<b>TVD Reference:</b>	WELL @ 4560.0ft (Original Well Elev)
<b>Site:</b>	70 Ranch 11-27 Pad Sec.27-T5N-R63W	<b>MD Reference:</b>	WELL @ 4560.0ft (Original Well Elev)
<b>Well:</b>	North Platte B-27	<b>North Reference:</b>	True
<b>Wellbore:</b>	Wellbore #1	<b>Survey Calculation Method:</b>	Minimum Curvature
<b>Design:</b>	Wellbore #1	<b>Database:</b>	Landmark

Survey										
Measured Depth (ft)	Inclination (°)	Azimuth (°)	Vertical Depth (ft)	+N/-S (ft)	+E/-W (ft)	Vertical Section (ft)	Dogleg Rate (°/100ft)	Build Rate (°/100ft)	Turn Rate (°/100ft)	
1,375.0	11.60	208.10	1,361.9	-109.1	-104.1	147.1	0.25	0.25	-0.08	
1,497.0	10.60	207.90	1,481.7	-129.8	-115.1	170.6	0.82	-0.82	-0.16	
1,620.0	10.50	206.00	1,602.6	-149.9	-125.3	193.0	0.29	-0.08	-1.54	
1,744.0	10.70	209.70	1,724.5	-170.1	-135.9	215.8	0.57	0.16	2.98	
1,869.0	9.90	206.80	1,847.4	-189.7	-146.5	238.1	0.76	-0.64	-2.32	
1,994.0	10.40	212.60	1,970.5	-208.8	-157.5	260.1	0.91	0.40	4.64	
2,120.0	11.30	212.10	2,094.2	-228.9	-170.2	283.8	0.72	0.71	-0.40	
2,244.0	10.70	208.80	2,216.0	-249.2	-182.2	307.5	0.70	-0.48	-2.66	
2,370.0	10.90	209.80	2,339.7	-269.8	-193.7	331.1	0.22	0.16	0.79	
2,495.0	10.70	205.40	2,462.5	-290.6	-204.6	354.4	0.68	-0.16	-3.52	
2,620.0	12.00	205.10	2,585.1	-312.8	-215.1	378.9	1.04	1.04	-0.24	
2,745.0	12.00	205.60	2,707.3	-336.3	-226.2	404.8	0.08	0.00	0.40	
2,871.0	11.20	205.40	2,830.8	-359.2	-237.1	430.0	0.64	-0.63	-0.16	
2,996.0	11.60	205.10	2,953.3	-381.5	-247.6	454.6	0.32	0.32	-0.24	
3,120.0	10.80	205.80	3,074.9	-403.3	-258.0	478.5	0.65	-0.65	0.56	
3,246.0	11.40	208.20	3,198.6	-424.9	-269.0	502.7	0.60	0.48	1.90	
3,369.0	10.90	208.10	3,319.3	-445.8	-280.2	526.5	0.41	-0.41	-0.08	
3,495.0	11.30	207.20	3,442.9	-467.3	-291.5	550.7	0.35	0.32	-0.71	
3,620.0	11.80	206.10	3,565.4	-489.7	-302.7	575.7	0.44	0.40	-0.88	
3,745.0	12.10	206.70	3,687.7	-512.9	-314.2	601.5	0.26	0.24	0.48	
3,870.0	11.90	210.70	3,809.9	-535.7	-326.7	627.4	0.68	-0.16	3.20	
3,996.0	11.80	212.80	3,933.2	-557.7	-340.3	653.3	0.35	-0.08	1.67	
4,121.0	12.50	214.60	4,055.4	-579.6	-354.9	679.6	0.64	0.56	1.44	
4,245.0	11.80	213.70	4,176.7	-601.1	-369.5	705.6	0.58	-0.56	-0.73	
4,369.0	8.10	204.40	4,298.8	-619.7	-380.2	727.0	3.24	-2.98	-7.50	
4,493.0	6.10	206.80	4,421.8	-633.5	-386.8	742.2	1.63	-1.61	1.94	
4,618.0	4.20	216.20	4,546.3	-643.1	-392.5	753.4	1.66	-1.52	7.52	
4,743.0	3.30	225.60	4,671.1	-649.3	-397.7	761.4	0.87	-0.72	7.52	
4,868.0	0.80	180.10	4,796.0	-652.7	-400.3	765.7	2.24	-2.00	-36.40	
4,992.0	1.00	199.80	4,920.0	-654.6	-400.7	767.5	0.29	0.16	15.89	
5,072.0	0.35	242.18	5,000.0	-655.4	-401.1	768.4	0.97	-0.81	52.95	
TARGET BHL 1450'FNL & 50'FWL										
5,117.0	0.40	313.40	5,045.0	-655.3	-401.4	768.4	0.97	0.12	158.38	
5,241.0	0.40	268.50	5,168.9	-655.0	-402.1	768.6	0.25	0.00	-36.21	
5,367.0	0.90	271.40	5,294.9	-655.0	-403.5	769.3	0.40	0.40	2.30	
5,491.0	0.80	276.30	5,418.9	-654.9	-405.4	770.2	0.10	-0.08	3.95	
5,618.0	0.70	284.50	5,545.9	-654.6	-407.0	770.7	0.12	-0.08	6.46	
5,741.0	0.80	298.80	5,668.9	-654.0	-408.5	771.0	0.17	0.08	11.63	
5,865.0	1.10	322.50	5,792.9	-652.7	-410.0	770.6	0.39	0.24	19.11	
5,990.0	1.20	326.50	5,917.9	-650.6	-411.4	769.6	0.10	0.08	3.20	
6,114.0	1.30	326.50	6,041.8	-648.4	-412.9	768.4	0.08	0.08	0.00	
6,239.0	0.40	270.10	6,166.8	-647.2	-414.1	768.0	0.90	-0.72	-45.12	
6,291.9	0.64	284.91	6,219.7	-647.1	-414.6	768.2	0.52	0.46	27.98	
TARGET CIRCLE 1450'FNL & 50'FWL										
6,363.0	1.00	292.80	6,290.8	-646.8	-415.6	768.4	0.52	0.50	11.10	
6,488.0	0.90	298.00	6,415.8	-645.9	-417.4	768.6	0.11	-0.08	4.16	
6,612.0	0.70	287.90	6,539.8	-645.2	-419.0	768.9	0.20	-0.16	-8.15	
6,653.0	0.70	286.10	6,580.8	-645.0	-419.5	769.0	0.05	0.00	-4.39	
6,698.0	0.70	286.10	6,625.8	-644.9	-420.0	769.1	0.00	0.00	0.00	

<b>Company:</b>	BONANZA CREEK ENERGY OPERATING	<b>Local Co-ordinate Reference:</b>	Well North Platte B-27
<b>Project:</b>	SEC.27-T5N-R63W	<b>TVD Reference:</b>	WELL @ 4560.0ft (Original Well Elev)
<b>Site:</b>	70 Ranch 11-27 Pad Sec.27-T5N-R63W	<b>MD Reference:</b>	WELL @ 4560.0ft (Original Well Elev)
<b>Well:</b>	North Platte B-27	<b>North Reference:</b>	True
<b>Wellbore:</b>	Wellbore #1	<b>Survey Calculation Method:</b>	Minimum Curvature
<b>Design:</b>	Wellbore #1	<b>Database:</b>	Landmark

Checked By: _____	Approved By: _____	Date: _____
-------------------	--------------------	-------------