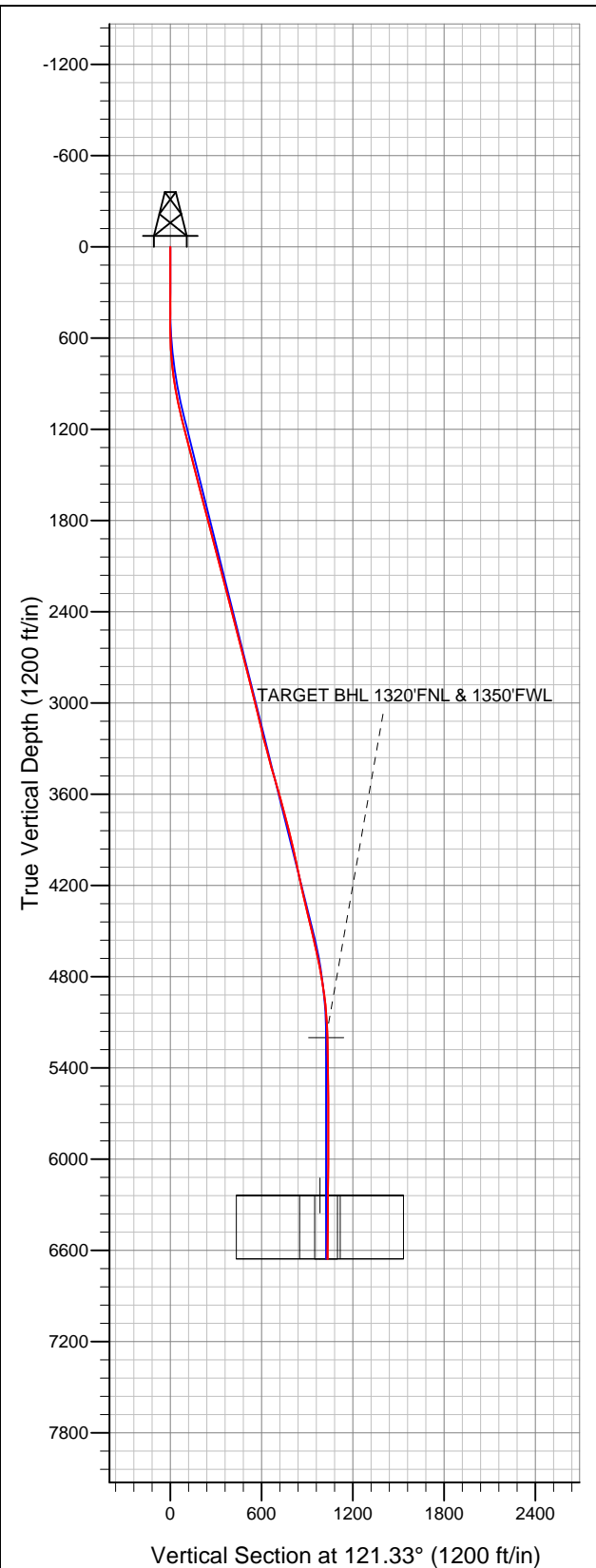


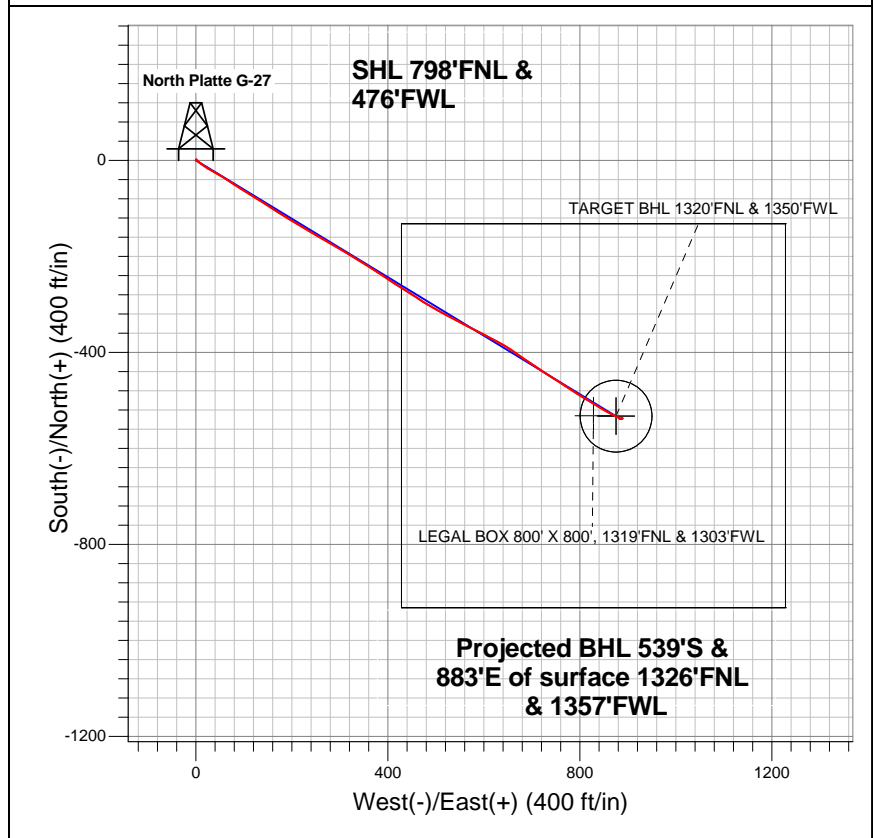
Well Name: North Platte G-27

Surface Location: 70 Ranch 11-27 Pad Sec.27-T5N-R63W
North American Datum 1983 US State Plane 1983Colorado Northern Zone
Ground Elevation: 4548.0

+N/-S	+E/-W	Northing	Easting	Latitude	Longitude	Slot
0.0	0.0	1381432.09	3298273.74	40.375490	-104.429400	
Original Well Elev			WELL @ 4563.0ft (Original Well Elev)			



BONANZA CREEK ENERGY OPERATING



LEGEND

- Wellbore #1
- North Platte G-27, Wellbore #1, Plan #1 (MAY 08, 2012) V0
- Survey #1

Final Survey Plot

Projected Final Survey -
6780'MD & 6657'TVD @ 1034'VS
0.90 deg Inc 265.60 deg AZ

Project: SEC.27-T5N-R63W
Site: 70 Ranch 11-27 Pad Sec.27-T5N-R63W
Well: North Platte G-27
Plan: Wellbore #1



BONANZA CREEK ENERGY OPERATING

SEC.27-T5N-R63W

70 Ranch 11-27 Pad Sec.27-T5N-R63W

North Platte G-27

Wellbore #1

Survey: Survey #1

Standard Survey Report

19 July, 2012

Survey										
	Measured Depth (ft)	Inclination (°)	Azimuth (°)	Vertical Depth (ft)	+N/-S (ft)	+E/-W (ft)	Vertical Section (ft)	Dogleg Rate (°/100ft)	Build Rate (°/100ft)	Turn Rate (°/100ft)
Survey Data	0.0	0.00	0.00	0.0	0.0	0.0	0.0	0.00	0.00	0.00
	138.0	0.50	10.70	138.0	0.6	0.1	-0.2	0.36	0.36	0.00
	286.0	0.40	62.00	286.0	1.5	0.7	-0.2	0.27	-0.07	34.66
	439.0	0.20	92.60	439.0	1.7	1.4	0.3	0.16	-0.13	20.00
	525.0	0.70	257.30	525.0	1.6	1.1	0.1	1.04	0.58	191.51
	647.0	2.80	132.10	646.9	-0.6	2.5	2.5	2.67	1.72	-102.62
	770.0	5.80	127.70	769.6	-6.4	9.7	11.6	2.45	2.44	-3.58
	893.0	9.10	123.70	891.5	-15.6	22.7	27.5	2.71	2.68	-3.25
	1,015.0	11.80	117.40	1,011.5	-26.7	41.8	49.6	2.40	2.21	-5.16
	1,136.0	13.40	123.30	1,129.6	-40.1	64.5	76.0	1.70	1.32	4.88
	1,259.0	14.70	123.70	1,248.9	-56.6	89.4	105.8	1.06	1.06	0.33
	1,382.0	14.40	120.40	1,368.0	-73.0	115.6	136.7	0.72	-0.24	-2.68
	1,504.0	14.70	122.60	1,486.1	-89.0	141.7	167.3	0.52	0.25	1.80

Company:	BONANZA CREEK ENERGY OPERATING	Local Co-ordinate Reference:	Well North Platte G-27
Project:	SEC.27-T5N-R63W	TVD Reference:	WELL @ 4563.0ft (Original Well Elev)
Site:	70 Ranch 11-27 Pad Sec.27-T5N-R63W	MD Reference:	WELL @ 4563.0ft (Original Well Elev)
Well:	North Platte G-27	North Reference:	True
Wellbore:	Wellbore #1	Survey Calculation Method:	Minimum Curvature
Design:	Wellbore #1	Database:	Landmark

Survey

Measured Depth (ft)	Inclination (°)	Azimuth (°)	Vertical Depth (ft)	+N/-S (ft)	+E/-W (ft)	Vertical Section (ft)	Dogleg Rate (°/100ft)	Build Rate (°/100ft)	Turn Rate (°/100ft)
1,627.0	14.30	123.20	1,605.1	-105.7	167.6	198.1	0.35	-0.33	0.49
1,752.0	14.90	121.40	1,726.1	-122.5	194.2	229.6	0.60	0.48	-1.44
1,877.0	14.30	120.20	1,847.1	-138.7	221.3	261.1	0.54	-0.48	-0.96
2,003.0	14.90	121.40	1,969.0	-154.9	248.5	292.9	0.53	0.48	0.95
2,128.0	14.40	119.70	2,089.9	-171.0	275.8	324.5	0.53	-0.40	-1.36
2,253.0	14.30	120.50	2,211.0	-186.6	302.6	355.5	0.18	-0.08	0.64
2,378.0	14.40	120.50	2,332.1	-202.3	329.3	386.4	0.08	0.08	0.00
2,502.0	14.70	122.80	2,452.2	-218.6	355.8	417.6	0.52	0.24	1.85
2,627.0	15.10	123.70	2,572.9	-236.2	382.6	449.7	0.37	0.32	0.72
2,753.0	14.60	122.50	2,694.7	-253.9	409.7	482.0	0.47	-0.40	-0.95
2,878.0	13.80	121.90	2,815.9	-270.2	435.6	512.6	0.65	-0.64	-0.48
3,003.0	14.20	123.90	2,937.2	-286.7	461.0	542.9	0.50	0.32	1.60
3,128.0	13.50	120.70	3,058.6	-302.7	486.3	572.8	0.83	-0.56	-2.56
3,253.0	13.20	118.60	3,180.2	-316.9	511.4	601.6	0.46	-0.24	-1.68
3,377.0	15.30	117.90	3,300.4	-331.4	538.3	632.1	1.70	1.69	-0.56
3,503.0	15.40	117.00	3,421.9	-346.7	567.9	665.4	0.21	0.08	-0.71
3,627.0	16.40	116.70	3,541.1	-362.1	598.2	699.2	0.81	0.81	-0.24
3,752.0	15.50	118.40	3,661.3	-378.0	628.6	733.5	0.81	-0.72	1.36
3,878.0	14.30	123.70	3,783.1	-394.6	656.4	765.9	1.44	-0.95	4.21
4,003.0	13.50	125.30	3,904.4	-411.6	681.1	795.8	0.71	-0.64	1.28
4,128.0	12.20	123.90	4,026.3	-427.4	704.0	823.6	1.07	-1.04	-1.12
4,253.0	12.10	123.50	4,148.5	-442.0	725.9	849.9	0.10	-0.08	-0.32
4,378.0	12.60	121.80	4,270.6	-456.4	748.4	876.6	0.49	0.40	-1.36
4,502.0	13.50	123.90	4,391.4	-471.6	771.9	904.6	0.82	0.73	1.69
4,628.0	13.60	122.00	4,513.9	-487.7	796.7	934.1	0.36	0.08	-1.51
4,753.0	12.20	121.40	4,635.7	-502.3	820.4	962.0	1.13	-1.12	-0.48
4,877.0	10.60	120.70	4,757.3	-515.0	841.4	986.5	1.30	-1.29	-0.56
5,003.0	8.50	119.30	4,881.5	-525.5	859.5	1,007.4	1.68	-1.67	-1.11
5,128.0	5.30	117.20	5,005.6	-532.6	872.7	1,022.4	2.57	-2.56	-1.68
5,252.0	2.60	112.60	5,129.3	-536.3	880.4	1,030.9	2.19	-2.18	-3.71
5,322.5	1.73	107.28	5,199.7	-537.3	882.9	1,033.5	1.26	-1.23	-7.55
TARGET BHL 1320'FNL & 1350'FWL									
5,376.0	1.10	97.70	5,253.2	-537.6	884.2	1,034.8	1.26	-1.18	-17.90
5,502.0	0.80	85.60	5,379.2	-537.7	886.2	1,036.6	0.29	-0.24	-9.60
5,627.0	0.50	86.40	5,504.2	-537.6	887.7	1,037.7	0.24	-0.24	0.64
5,752.0	0.40	85.00	5,629.2	-537.5	888.6	1,038.5	0.08	-0.08	-1.12
5,877.0	0.20	168.30	5,754.2	-537.7	889.1	1,039.0	0.34	-0.16	66.64
6,002.0	0.20	264.80	5,879.2	-537.9	888.9	1,039.0	0.24	0.00	77.20
6,127.0	0.20	232.90	6,004.2	-538.0	888.6	1,038.8	0.09	0.00	-25.52
6,253.0	0.40	284.90	6,130.2	-538.1	888.0	1,038.3	0.25	0.16	41.27
6,360.9	0.39	254.00	6,238.1	-538.1	887.2	1,037.6	0.20	-0.01	-28.64
TARGET CIRLCE 1320'FNL & 1350'FWL									
6,361.2	0.39	253.92	6,238.4	-538.1	887.2	1,037.6	0.20	0.04	-27.85
LEGAL BOX 800' X 800', 1319'FNL & 1303'FWL									
6,377.0	0.40	249.60	6,254.2	-538.1	887.1	1,037.6	0.20	0.05	-27.29
6,502.0	0.40	237.80	6,379.2	-538.5	886.3	1,037.1	0.07	0.00	-9.44
6,627.0	0.80	268.20	6,504.2	-538.7	885.1	1,036.2	0.40	0.32	24.32
6,735.0	0.90	265.60	6,612.2	-538.8	883.5	1,034.9	0.10	0.09	-2.41
6,780.0	0.90	265.60	6,657.2	-538.9	882.8	1,034.3	0.00	0.00	0.00

Company:	BONANZA CREEK ENERGY OPERATING	Local Co-ordinate Reference:	Well North Platte G-27
Project:	SEC.27-T5N-R63W	TVD Reference:	WELL @ 4563.0ft (Original Well Elev)
Site:	70 Ranch 11-27 Pad Sec.27-T5N-R63W	MD Reference:	WELL @ 4563.0ft (Original Well Elev)
Well:	North Platte G-27	North Reference:	True
Wellbore:	Wellbore #1	Survey Calculation Method:	Minimum Curvature
Design:	Wellbore #1	Database:	Landmark

Checked By: _____	Approved By: _____	Date: _____
-------------------	--------------------	-------------