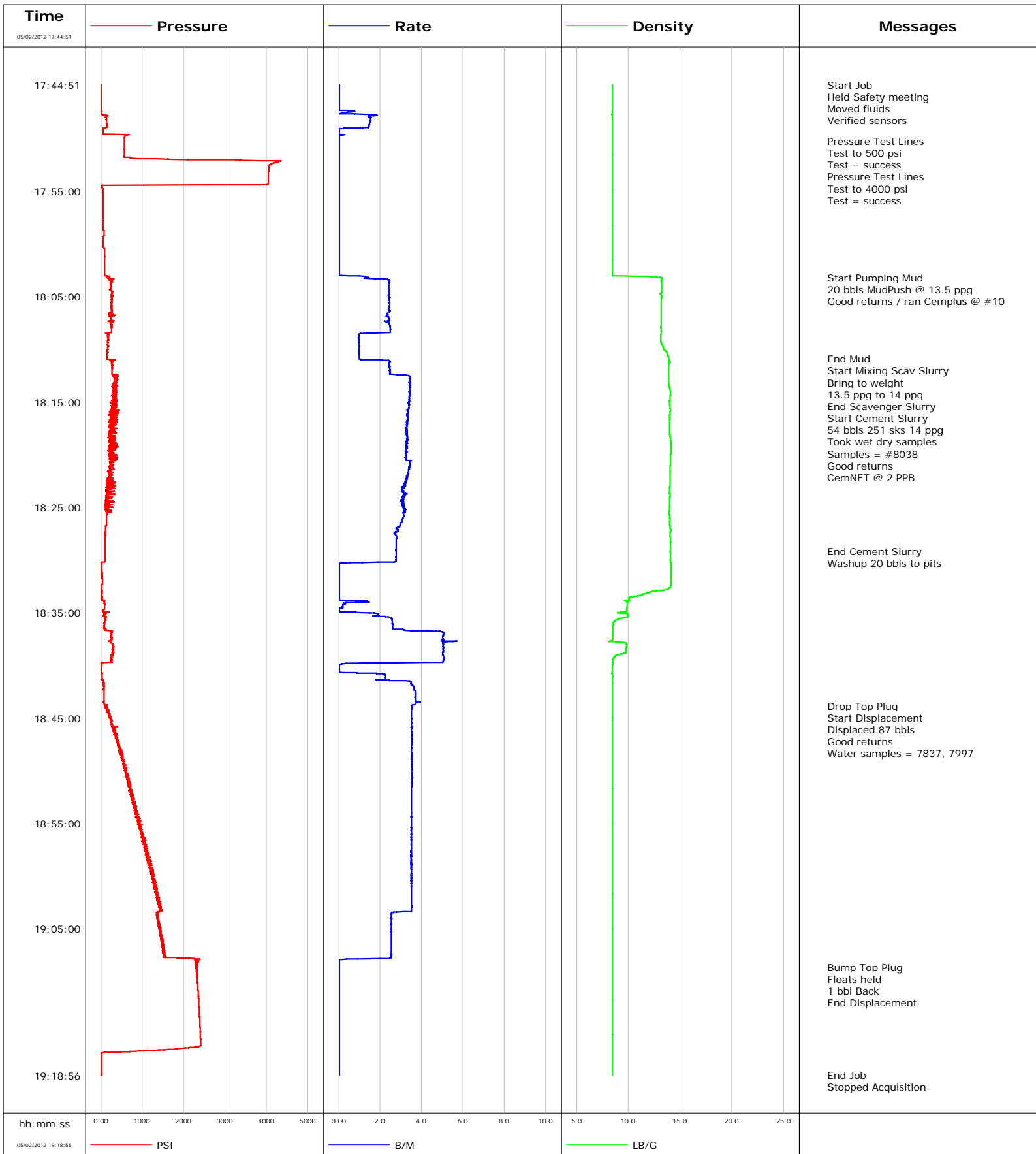


Well	Twin Creek 12-6A1	Client	Encana
Field	S. Parachute	SIR No.	C62J-00002
Engineer	Russell Bolding / Peavey	Job Type	4 1/2 Production
Country	United States	Job Date	05-02-2012

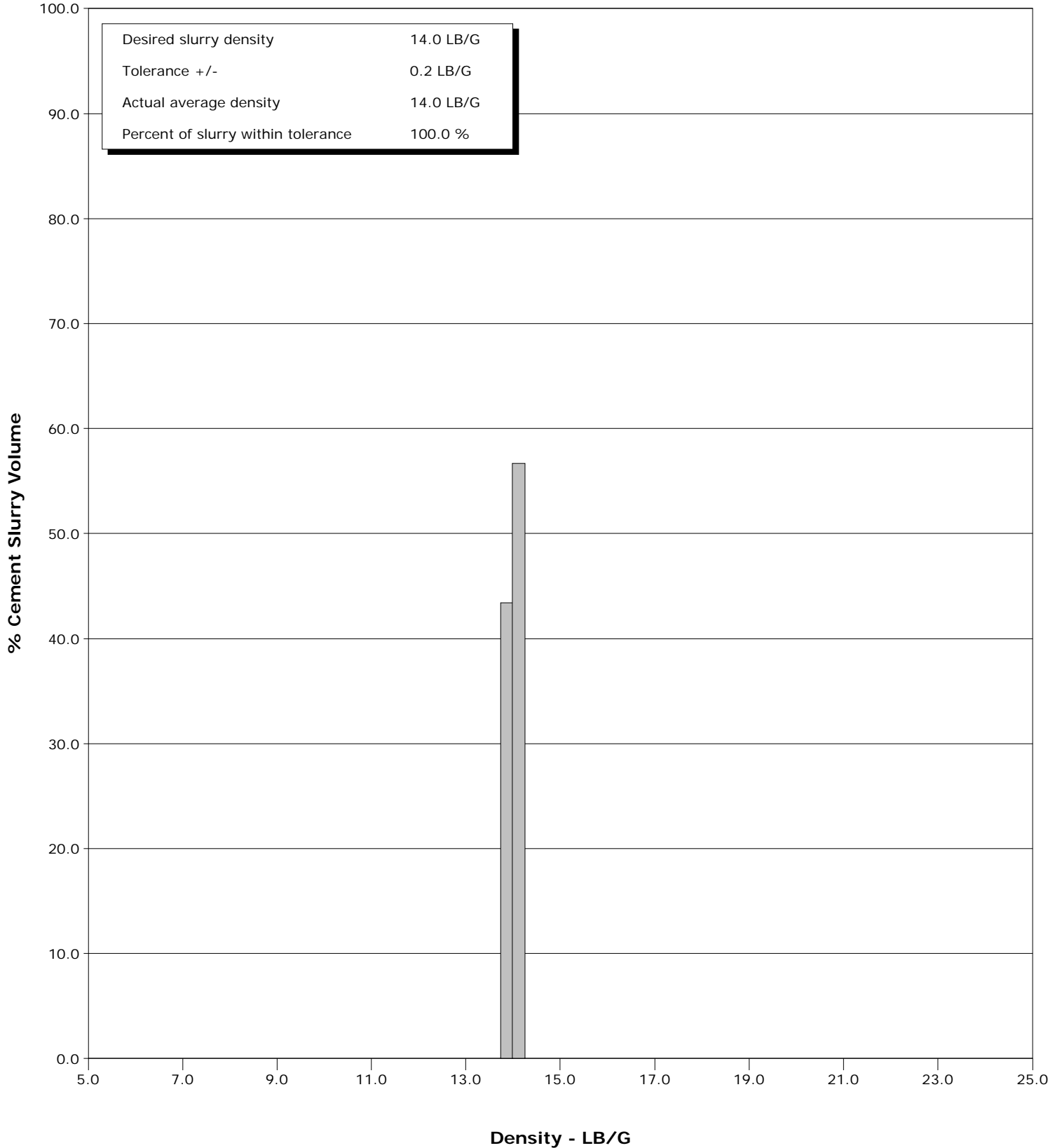


Schlumberger Cementing Qa/Qc Density Report

Well Twin Creek 12-6A1
Field S. Parachute
Engineer Russell Bolding / Peavey
Country United States

Client Encana
SIR No. C62J-00002
Job Type 4 1/2 Production
Job Date 05-02-2012

Cement Slurry - 05/02/2012 18:11:04 to 05/02/2012 18:29:10



Well		Field		Job Start		Customer		Job Number	
Twin Creek 12-6A1 Twin Creek 12-6A1		S. Parachute		May/02/2012		Encana		C62J-00002	
Date	Time 24-hr clock	Treating Pressure PSI	Flow Rate B/M	Density LB/G	Volume BBL	Message			
05/02/2012	17:52:19	4157	0.0	8.45	2.2				
05/02/2012	17:52:21					Test = success			
05/02/2012	17:52:21	4140	0.0	8.45	2.2				
05/02/2012	17:53:28	4044	0.0	8.45	2.2				
05/02/2012	17:55:08	51	0.0	8.46	2.2				
05/02/2012	17:56:48	51	0.0	8.46	2.2				
05/02/2012	17:58:28	52	0.0	8.46	2.2				
05/02/2012	18:00:08	54	0.0	8.45	2.2				
05/02/2012	18:01:48	88	0.0	8.45	2.2				
05/02/2012	18:03:09					Start Pumping Mud			
05/02/2012	18:03:09	161	1.4	13.00	2.4				
05/02/2012	18:03:10					20 bbls MudPush @ 13.5 ppg			
05/02/2012	18:03:10	167	1.4	13.16	2.4				
05/02/2012	18:03:11					Good returns / ran Cemplus @ #10			
05/02/2012	18:03:11	167	1.5	13.16	2.4				
05/02/2012	18:03:28	280	2.4	13.19	3.0				
05/02/2012	18:05:08	272	2.5	13.19	7.1				
05/02/2012	18:06:48	331	2.4	13.18	11.1				
05/02/2012	18:08:28	118	1.3	13.17	15.2				
05/02/2012	18:10:08	154	1.0	13.57	16.8				
05/02/2012	18:10:53					End Mud			
05/02/2012	18:10:53	154	1.0	13.90	17.6				
05/02/2012	18:10:58					Start Mixing Scav Slurry			
05/02/2012	18:10:58	288	1.1	13.91	17.7				
05/02/2012	18:10:59					Bring to weight			
05/02/2012	18:10:59					13.5 ppg to 14 ppg			
05/02/2012	18:10:59	288	1.8	13.91	17.7				
05/02/2012	18:11:03					End Scavenger Slurry			
05/02/2012	18:11:03	232	2.4	13.91	17.8				
05/02/2012	18:11:04					Start Cement Slurry			
05/02/2012	18:11:04	218	2.4	13.91	17.9				
05/02/2012	18:11:05					54 bbls 251 sks 14 ppg			
05/02/2012	18:11:05	218	2.5	13.94	17.9				
05/02/2012	18:11:06					Took wet dry samples			
05/02/2012	18:11:06					Samples = #8038			
05/02/2012	18:11:06	240	2.5	13.96	17.9				
05/02/2012	18:11:07					Good returns			
05/02/2012	18:11:07					CemNET @ 2 PPB			
05/02/2012	18:11:07	262	2.5	13.96	18.0				
05/02/2012	18:11:48	274	2.5	13.87	19.7				
05/02/2012	18:13:28	348	3.4	13.95	24.8				
05/02/2012	18:15:08	296	3.4	13.99	30.5				
05/02/2012	18:16:48	273	3.3	13.99	36.1				
05/02/2012	18:18:28	260	3.3	14.07	41.5				
05/02/2012	18:20:08	186	3.2	14.08	47.0				
05/02/2012	18:21:48	188	3.3	14.02	52.6				
05/02/2012	18:23:28	126	3.1	14.00	57.9				
05/02/2012	18:25:08	134	3.2	13.97	63.1				
05/02/2012	18:26:48	119	2.9	14.07	68.3				
05/02/2012	18:28:28	106	2.8	14.05	73.0				
05/02/2012	18:29:10					End Cement Slurry			
05/02/2012	18:29:10	106	2.8	14.05	74.9				
05/02/2012	18:29:13					Washup 20 bbls to pits			
05/02/2012	18:29:13	105	2.8	14.05	75.0				

Well		Field		Job Start		Customer		Job Number	
Twin Creek 12-6A1 Twin Creek 12-6A1		S. Parachute		May/02/2012		Encana		C62J-00002	
Date	Time 24-hr clock	Treating Pressure PSI	Flow Rate B/M	Density LB/G	Volume BBL	Message			
05/02/2012	18:31:48	45	0.0	14.10	77.9				
05/02/2012	18:33:28	20	0.0	10.51	77.9				
05/02/2012	18:35:08	80	1.9	9.99	78.5				
05/02/2012	18:36:48	250	5.0	8.52	82.9				
05/02/2012	18:38:28	308	5.0	9.76	91.3				
05/02/2012	18:40:08	0	0.0	8.47	97.9				
05/02/2012	18:41:48	72	3.5	8.45	100.7				
05/02/2012	18:43:28	73	3.9	8.45	106.8				
05/02/2012	18:43:51					Drop Top Plug			
05/02/2012	18:43:51	89	3.6	8.45	108.2				
05/02/2012	18:43:52					Start Displacement			
05/02/2012	18:43:52	100	3.5	8.45	108.3				
05/02/2012	18:43:53					Displaced 87 bbls			
05/02/2012	18:43:53	123	3.5	8.45	108.3				
05/02/2012	18:43:54					Good returns			
05/02/2012	18:43:54					Water samples = 7837, 7997			
05/02/2012	18:43:54	123	3.5	8.45	108.4				
05/02/2012	18:45:08	228	3.5	8.45	112.7				
05/02/2012	18:46:48	355	3.5	8.45	118.6				
05/02/2012	18:48:28	469	3.5	8.45	124.5				
05/02/2012	18:50:08	595	3.5	8.45	130.3				
05/02/2012	18:51:48	726	3.5	8.45	136.2				
05/02/2012	18:53:28	830	3.5	8.45	142.1				
05/02/2012	18:55:08	981	3.5	8.45	147.9				
05/02/2012	18:56:48	1021	3.5	8.45	153.8				
05/02/2012	18:58:28	1123	3.5	8.45	159.6				
05/02/2012	19:00:08	1273	3.5	8.45	165.4				
05/02/2012	19:01:48	1375	3.5	8.45	171.3				
05/02/2012	19:03:28	1397	2.7	8.45	177.1				
05/02/2012	19:05:08	1440	2.5	8.45	181.3				
05/02/2012	19:06:48	1505	2.5	8.45	185.6				
05/02/2012	19:08:28	2311	0.0	8.45	188.3				
05/02/2012	19:08:39					Bump Top Plug			
05/02/2012	19:08:39	2294	0.0	8.45	188.3				
05/02/2012	19:08:41					Floats held			
05/02/2012	19:08:41					1 bbl Back			
05/02/2012	19:08:41	2304	0.0	8.45	188.3				
05/02/2012	19:08:43					End Displacement			
05/02/2012	19:08:43	2310	0.0	8.45	188.3				
05/02/2012	19:10:08	2333	0.0	8.45	188.3				
05/02/2012	19:11:48	2359	0.0	8.45	188.3				
05/02/2012	19:13:28	2382	0.0	8.45	188.3				
05/02/2012	19:15:08	2402	0.0	8.45	188.3				
05/02/2012	19:16:48	37	0.0	8.45	188.3				
05/02/2012	19:18:28	3	0.0	8.45	188.3				
05/02/2012	19:18:54					End Job			
05/02/2012	19:18:54	2	0.0	8.45	188.3				

Well Twin Creek 12-6A1 Twin Creek 12-6A1	Field S. Parachute	Job Start May/02/2012	Customer Encana	Job Number C62J-00002
--	------------------------------	---------------------------------	---------------------------	---------------------------------

Post Job Summary

Average Pump Rates, bbl/min					Volume of Fluid Injected, bbl			
Slurry 3.0	N2	Mud 2.0	Maximum Rate 5.7	Total Slurry 54.3	Mud 20.1	Spacer 2.0	N2	
Treating Pressure Summary, psi					Breakdown Fluid			
Maximum 4339	Final 2	Average 688	Bump Plug to 1373	Breakdown	Type	Volume	Density	
Avg. N2 Percent	Designed Slurry Volume	Displacement 87.0 bbl	Mix Water Temp	Cement Circulated to Surface?	<input type="checkbox"/>	Volume		
				Washed Thru Perfs	<input type="checkbox"/>	To		
Customer or Authorized Representative Tony Ketterling	Schlumberger Supervisor Russell Bolding / Peavey			Circulation Lost	<input type="checkbox"/>	Job Completed	<input checked="" type="checkbox"/>	
				-		-		