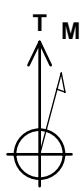
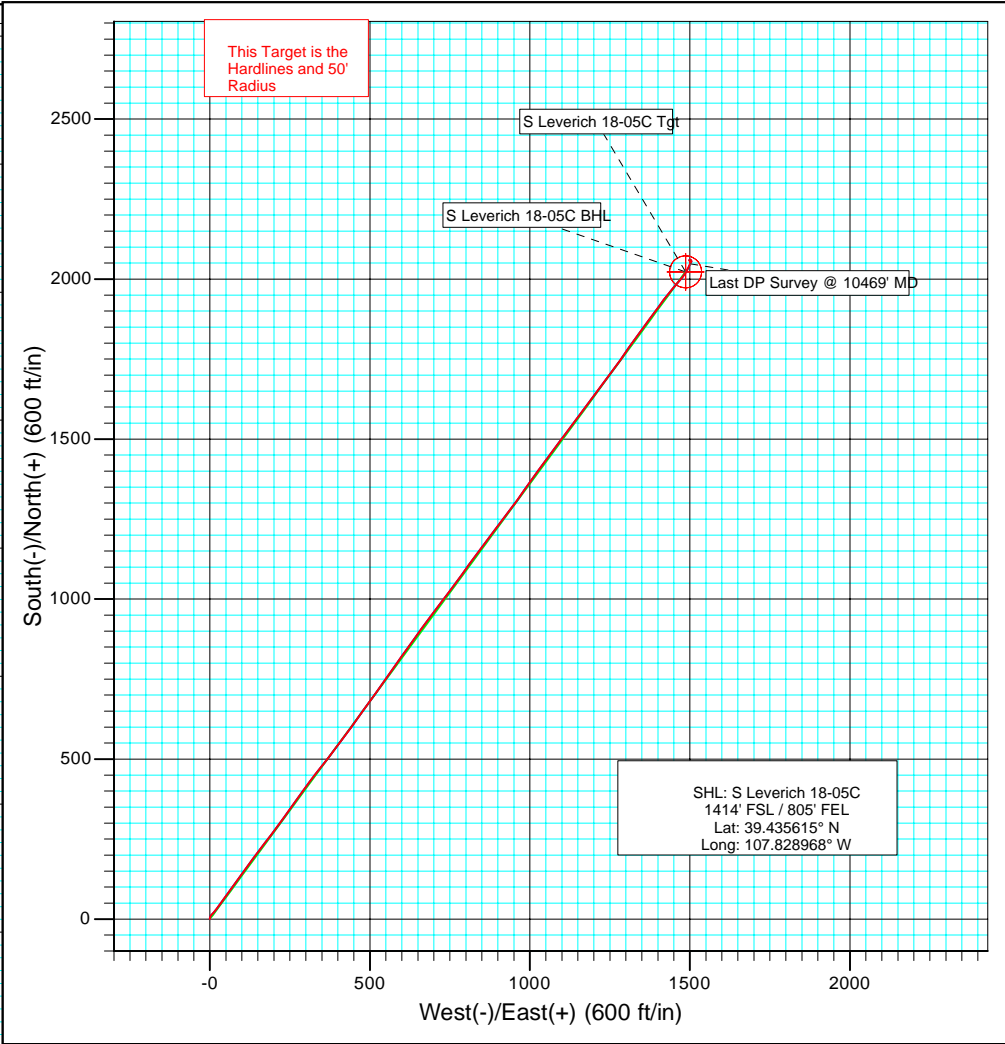
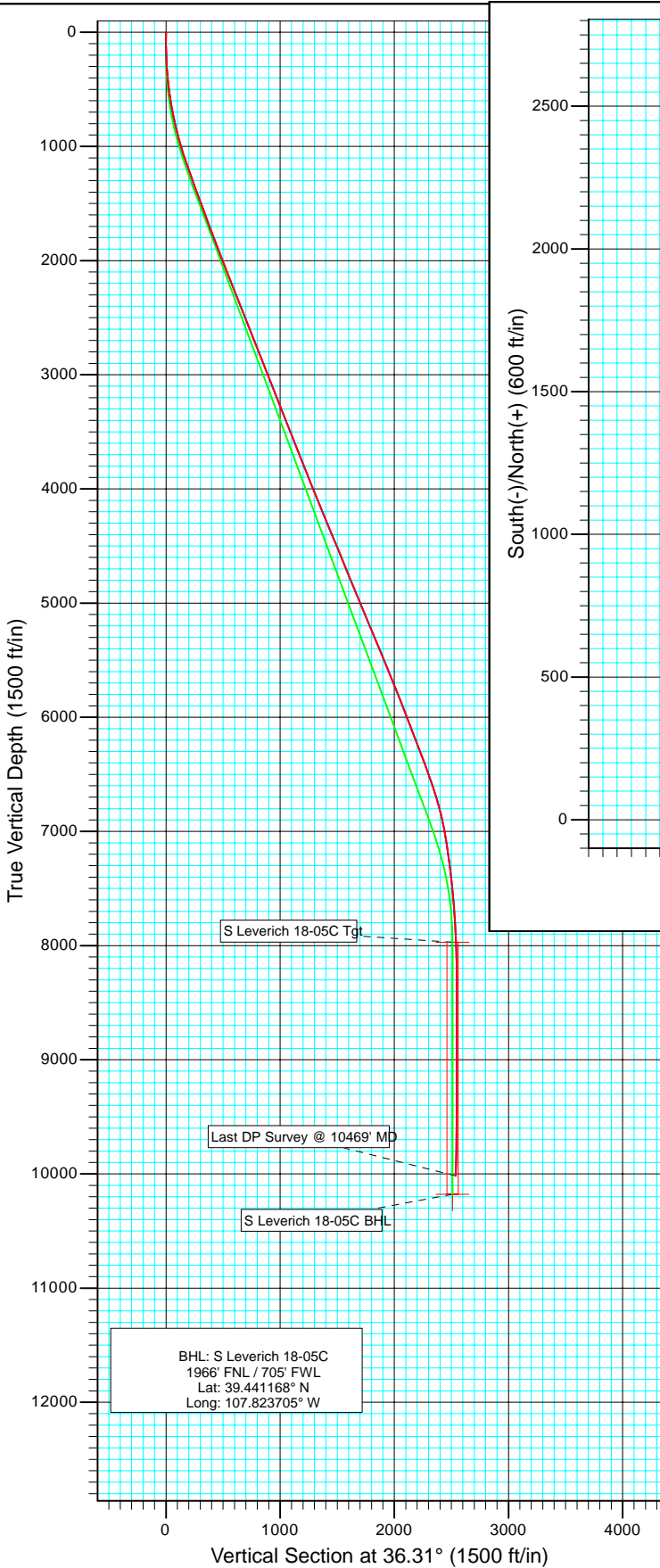




Project: Helmer Gulch
 Site: NESE Sec 13-T7S-R94W
 Well: South Leverich 18-05C
 Wellbore: DD
 Design: Final



Azimuths to True North
 Magnetic North: 10.54°

Magnetic Field
 Strength: 52479.9snT
 Dip Angle: 65.79°
 Date: 2/26/2009
 Model: IGRF200510

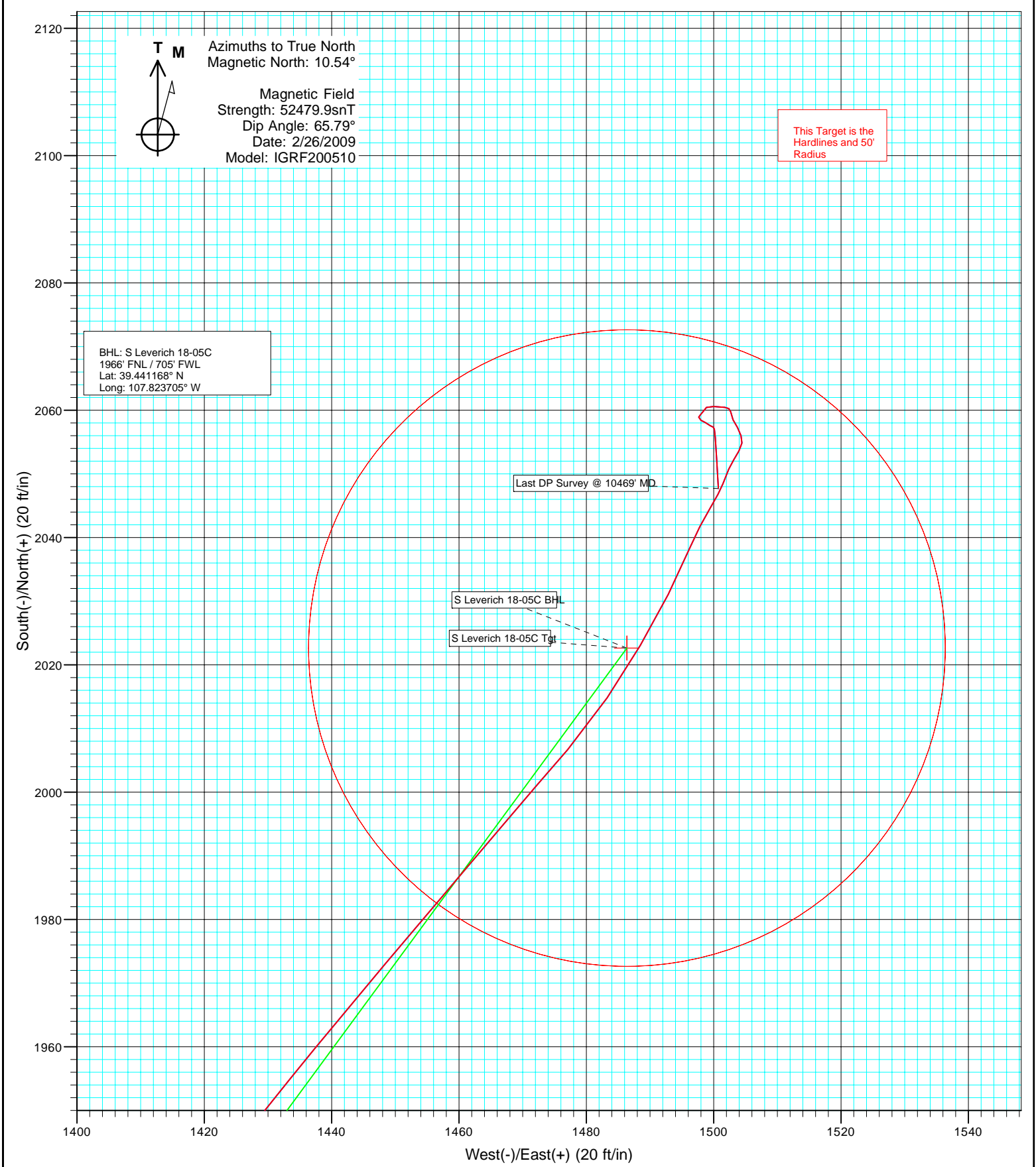
DESIGN DETAILS: DD

95069; JS
 SL 18-05C KBE @ 8028.0ft (Grey Wolf 706)

Target	Azimuth	Origin	Type	N/S	E/W	TVD
No Target (Freehand)	36.31		Slot	0.0	0.0	0.0



Project: Helmer Gulch
Site: NESE Sec 13-T7S-R94W
Well: South Leverich 18-05C
Wellbore: DD
Design: DD



Cathedral Energy Services

Survey Report

Company: Laramie Energy II, LLC.	Local Co-ordinate Reference: Well South Leverich 18-05C
Project: Helmer Gulch	TVD Reference: SL 18-05C KBE @ 8028.0ft (Grey Wolf 706)
Site: NESE Sec 13-T7S-R94W	MD Reference: SL 18-05C KBE @ 8028.0ft (Grey Wolf 706)
Well: South Leverich 18-05C	North Reference: True
Wellbore: DD	Survey Calculation Method: Minimum Curvature
Design: DD	Database: US EDM 2003.21 Multi Users DB

Project Helmer Gulch		
Map System: US State Plane 1983	System Datum: Mean Sea Level	
Geo Datum: North American Datum 1983		
Map Zone: Colorado Central Zone		

Site NESE Sec 13-T7S-R94W				
Site Position:	Northing: 1,591,983.75 ft	Latitude: 39.435615		
From: Lat/Long	Easting: 2,342,272.33 ft	Longitude: -107.828968		
Position Uncertainty: 0.0 ft	Slot Radius: "	Grid Convergence: -1.47 °		

Well South Leverich 18-05C				
Well Position	+N/-S 0.0 ft	Northing: 1,591,983.73 ft	Latitude: 39.435615	
	+E/-W 0.0 ft	Easting: 2,342,272.33 ft	Longitude: -107.828968	
Position Uncertainty	0.0 ft	Wellhead Elevation: ft	Ground Level: 8,007.0 ft	

Wellbore DD					
Magnetics	Model Name	Sample Date	Declination (°)	Dip Angle (°)	Field Strength (nT)
	IGRF200510	2/26/2009	10.54	65.79	52,480

Design DD				
Audit Notes:				
Version: 1.0	Phase: ACTUAL	Tie On Depth: 0.0		
Vertical Section:	Depth From (TVD) (ft)	+N/-S (ft)	+E/-W (ft)	Direction (°)
	0.0	0.0	0.0	36.31

Survey Program		Date 3/15/2009
From (ft)	To (ft)	Survey (Wellbore)
126.0	10,469.0	Survey #1 (DD)
		Tool Name Geolink MWD
		Description Geolink MWD

Measured Depth (ft)	Inclination (°)	Azimuth (°)	Vertical Depth (ft)	+N/-S (ft)	+E/-W (ft)	Vertical Section (ft)	Dogleg Rate (°/100ft)	Build Rate (°/100ft)	Formations / Comments
0.0	0.00	0.00	0.0	0.0	0.0	0.0	0.00	0.00	
126.0	0.50	315.50	126.0	0.4	-0.4	0.1	0.40	0.40	
188.0	2.30	3.20	188.0	1.8	-0.5	1.2	3.22	2.90	
249.0	3.50	14.40	248.9	4.9	0.0	3.9	2.17	1.97	
311.0	4.00	26.80	310.8	8.6	1.5	7.8	1.53	0.81	
373.0	4.70	45.80	372.6	12.3	4.3	12.5	2.57	1.13	
435.0	6.20	43.00	434.3	16.5	8.4	18.3	2.46	2.42	
496.0	7.20	40.20	494.9	21.9	13.1	25.4	1.72	1.64	
558.0	8.30	38.40	556.3	28.3	18.4	33.7	1.82	1.77	
620.0	9.90	35.90	617.5	36.2	24.3	43.5	2.66	2.58	
681.0	10.50	34.60	677.6	45.0	30.5	54.3	1.05	0.98	
743.0	11.30	35.10	738.5	54.6	37.2	66.0	1.30	1.29	
804.0	12.60	35.60	798.1	64.9	44.5	78.7	2.14	2.13	

Cathedral Energy Services

Survey Report

Company:	Laramie Energy II, LLC.	Local Co-ordinate Reference:	Well South Leverich 18-05C
Project:	Helmer Gulch	TVD Reference:	SL 18-05C KBE @ 8028.0ft (Grey Wolf 706)
Site:	NESE Sec 13-T7S-R94W	MD Reference:	SL 18-05C KBE @ 8028.0ft (Grey Wolf 706)
Well:	South Leverich 18-05C	North Reference:	True
Wellbore:	DD	Survey Calculation Method:	Minimum Curvature
Design:	DD	Database:	US EDM 2003.21 Multi Users DB

Survey									
Measured Depth (ft)	Inclination (°)	Azimuth (°)	Vertical Depth (ft)	+N/-S (ft)	+E/-W (ft)	Vertical Section (ft)	Dogleg Rate (°/100ft)	Build Rate (°/100ft)	Formations / Comments
866.0	14.20	35.90	858.4	76.6	52.9	93.0	2.58	2.58	
929.0	15.10	36.70	919.4	89.4	62.4	109.0	1.46	1.43	
992.0	16.10	36.60	980.1	103.0	72.5	125.9	1.59	1.59	
1,056.0	16.90	35.90	1,041.4	117.7	83.2	144.1	1.29	1.25	
1,119.0	18.00	35.70	1,101.5	133.0	94.3	163.0	1.75	1.75	
1,183.0	19.10	35.90	1,162.2	149.5	106.2	183.3	1.72	1.72	
1,247.0	19.40	35.70	1,222.6	166.6	118.5	204.4	0.48	0.47	
1,310.0	20.40	37.00	1,281.9	183.9	131.2	225.9	1.74	1.59	
1,374.0	20.60	36.40	1,341.8	201.8	144.6	248.3	0.45	0.31	
1,437.0	20.60	37.10	1,400.8	219.6	157.9	270.5	0.39	0.00	
1,500.0	20.60	36.80	1,459.8	237.3	171.2	292.6	0.17	0.00	
1,593.0	19.70	37.80	1,547.1	262.8	190.6	324.7	1.04	-0.97	
1,688.0	20.10	36.20	1,636.4	288.6	210.1	357.0	0.71	0.42	
1,783.0	20.40	35.90	1,725.5	315.2	229.4	389.9	0.33	0.32	
1,878.0	20.90	35.90	1,814.4	342.4	249.1	423.4	0.53	0.53	
1,973.0	21.30	34.60	1,903.1	370.3	268.8	457.6	0.65	0.42	
2,068.0	21.40	36.20	1,991.5	398.5	288.8	492.1	0.62	0.11	
2,164.0	21.40	37.30	2,080.9	426.5	309.8	527.2	0.42	0.00	
2,259.0	21.70	37.40	2,169.3	454.3	331.0	562.0	0.32	0.32	
2,354.0	21.90	37.60	2,257.5	482.3	352.4	597.3	0.22	0.21	
2,450.0	21.70	38.60	2,346.6	510.3	374.4	633.0	0.44	-0.21	
2,545.0	22.10	37.40	2,434.8	538.2	396.2	668.4	0.63	0.42	
2,640.0	20.70	35.90	2,523.2	566.0	416.9	703.0	1.58	-1.47	
2,736.0	21.30	35.80	2,612.8	593.9	437.1	737.4	0.63	0.62	
2,831.0	21.70	36.40	2,701.2	622.1	457.6	772.2	0.48	0.42	
2,926.0	21.20	35.20	2,789.6	650.2	477.9	807.0	0.70	-0.53	
3,021.0	21.90	36.00	2,878.0	678.6	498.3	841.9	0.80	0.74	
3,117.0	22.00	35.50	2,967.0	707.7	519.2	877.8	0.22	0.10	
3,212.0	21.70	35.70	3,055.2	736.5	539.8	913.1	0.33	-0.32	
3,307.0	21.70	34.70	3,143.5	765.2	560.0	948.2	0.39	0.00	
3,403.0	21.00	35.50	3,232.9	793.8	580.1	983.2	0.79	-0.73	
3,498.0	21.50	35.20	3,321.4	821.9	600.1	1,017.6	0.54	0.53	
3,593.0	22.00	35.10	3,409.7	850.6	620.3	1,052.8	0.53	0.53	
3,689.0	21.70	36.10	3,498.8	879.7	641.1	1,088.5	0.50	-0.31	
3,784.0	21.80	35.90	3,587.0	908.2	661.8	1,123.7	0.13	0.11	
3,879.0	21.10	36.20	3,675.4	936.3	682.3	1,158.5	0.75	-0.74	
3,974.0	21.60	36.50	3,763.9	964.1	702.8	1,193.0	0.54	0.53	
4,070.0	22.20	38.30	3,853.0	992.6	724.5	1,228.8	0.94	0.63	
4,163.0	22.90	37.20	3,938.9	1,020.8	746.3	1,264.5	0.88	0.75	
4,259.0	22.00	36.30	4,027.6	1,050.1	768.3	1,301.2	1.00	-0.94	
4,354.0	21.50	35.10	4,115.8	1,078.7	788.8	1,336.3	0.70	-0.53	
4,449.0	22.10	36.10	4,204.0	1,107.4	809.4	1,371.6	0.74	0.63	
4,544.0	22.50	36.90	4,291.9	1,136.4	830.8	1,407.7	0.53	0.42	
4,639.0	22.90	36.90	4,379.6	1,165.7	852.8	1,444.3	0.42	0.42	
4,735.0	22.70	36.90	4,468.1	1,195.4	875.1	1,481.5	0.21	-0.21	
4,830.0	22.80	36.50	4,555.7	1,224.9	897.1	1,518.3	0.19	0.11	
4,925.0	22.10	37.00	4,643.5	1,254.0	918.8	1,554.5	0.76	-0.74	
5,020.0	21.80	37.10	4,731.6	1,282.3	940.2	1,590.1	0.32	-0.32	
5,115.0	22.30	35.50	4,819.6	1,311.0	961.3	1,625.7	0.82	0.53	
5,211.0	22.80	35.50	4,908.3	1,341.0	982.7	1,662.5	0.52	0.52	
5,306.0	22.90	35.00	4,995.9	1,371.1	1,004.0	1,699.4	0.23	0.11	
5,401.0	22.50	36.10	5,083.5	1,401.0	1,025.3	1,736.1	0.61	-0.42	
5,495.0	22.90	35.90	5,170.2	1,430.3	1,046.6	1,772.3	0.43	0.43	

Cathedral Energy Services

Survey Report

Company:	Laramie Energy II, LLC.	Local Co-ordinate Reference:	Well South Leverich 18-05C
Project:	Helmer Gulch	TVD Reference:	SL 18-05C KBE @ 8028.0ft (Grey Wolf 706)
Site:	NESE Sec 13-T7S-R94W	MD Reference:	SL 18-05C KBE @ 8028.0ft (Grey Wolf 706)
Well:	South Leverich 18-05C	North Reference:	True
Wellbore:	DD	Survey Calculation Method:	Minimum Curvature
Design:	DD	Database:	US EDM 2003.21 Multi Users DB

Survey									
Measured Depth (ft)	Inclination (°)	Azimuth (°)	Vertical Depth (ft)	+N/-S (ft)	+E/-W (ft)	Vertical Section (ft)	Dogleg Rate (°/100ft)	Build Rate (°/100ft)	Formations / Comments
5,590.0	22.80	37.10	5,257.8	1,460.0	1,068.6	1,809.2	0.50	-0.11	
5,686.0	22.60	37.80	5,346.3	1,489.4	1,091.1	1,846.3	0.35	-0.21	
5,779.0	22.70	37.00	5,432.2	1,517.8	1,112.8	1,882.1	0.35	0.11	
5,874.0	22.10	35.60	5,520.0	1,547.0	1,134.3	1,918.3	0.85	-0.63	
5,969.0	22.80	36.50	5,607.8	1,576.3	1,155.6	1,954.6	0.82	0.74	
6,064.0	22.10	37.70	5,695.6	1,605.3	1,177.5	1,990.8	0.88	-0.74	
6,159.0	21.30	36.10	5,783.9	1,633.3	1,198.6	2,025.9	1.05	-0.84	
6,254.0	21.30	35.50	5,872.4	1,661.3	1,218.8	2,060.5	0.23	0.00	
6,348.0	21.60	38.50	5,959.9	1,688.8	1,239.5	2,094.8	1.21	0.32	
6,443.0	21.10	36.40	6,048.3	1,716.2	1,260.5	2,129.4	0.96	-0.53	
6,538.0	21.20	35.30	6,136.9	1,744.0	1,280.6	2,163.7	0.43	0.11	
6,634.0	20.70	34.50	6,226.6	1,772.2	1,300.2	2,198.0	0.60	-0.52	
6,728.0	20.70	33.60	6,314.5	1,799.7	1,318.8	2,231.2	0.34	0.00	
6,823.0	20.80	37.40	6,403.4	1,827.1	1,338.4	2,264.8	1.42	0.11	
6,918.0	20.00	36.80	6,492.4	1,853.5	1,358.3	2,297.9	0.87	-0.84	
7,013.0	18.20	35.90	6,582.2	1,878.5	1,376.8	2,329.0	1.92	-1.89	
7,109.0	17.80	35.40	6,673.5	1,902.6	1,394.1	2,358.7	0.45	-0.42	
7,204.0	15.90	37.10	6,764.4	1,924.8	1,410.3	2,386.2	2.07	-2.00	
7,299.0	13.40	37.40	6,856.3	1,944.0	1,424.9	2,410.2	2.63	-2.63	
7,394.0	11.10	39.50	6,949.1	1,959.8	1,437.4	2,430.4	2.47	-2.42	
7,489.0	9.90	40.10	7,042.5	1,973.1	1,448.4	2,447.6	1.27	-1.26	
7,585.0	8.70	40.50	7,137.3	1,984.9	1,458.5	2,463.1	1.25	-1.25	
7,680.0	7.40	40.10	7,231.3	1,995.0	1,467.1	2,476.4	1.37	-1.37	
7,808.0	6.40	41.20	7,358.4	2,006.7	1,477.1	2,491.7	0.79	-0.78	
7,901.0	6.20	33.30	7,450.8	2,014.8	1,483.3	2,501.9	0.96	-0.22	
7,996.0	5.60	31.00	7,545.3	2,023.1	1,488.5	2,511.6	0.68	-0.63	
8,092.0	5.30	26.40	7,640.9	2,031.1	1,492.8	2,520.7	0.55	-0.31	
8,187.0	4.60	23.40	7,735.5	2,038.5	1,496.3	2,528.7	0.79	-0.74	
8,282.0	3.60	31.60	7,830.3	2,044.5	1,499.4	2,535.4	1.22	-1.05	
8,377.0	1.80	19.30	7,925.2	2,048.5	1,501.4	2,539.8	1.98	-1.89	
8,472.0	1.20	26.40	8,020.2	2,050.8	1,502.4	2,542.2	0.66	-0.63	
8,567.0	0.80	30.50	8,115.1	2,052.2	1,503.2	2,543.8	0.43	-0.42	
8,662.0	1.10	30.60	8,210.1	2,053.6	1,504.0	2,545.4	0.32	0.32	
8,757.0	0.60	0.80	8,305.1	2,054.9	1,504.4	2,546.7	0.69	-0.53	
8,852.0	0.80	347.20	8,400.1	2,056.0	1,504.3	2,547.6	0.27	0.21	
8,947.0	0.90	326.00	8,495.1	2,057.3	1,503.7	2,548.2	0.35	0.11	
9,042.0	0.80	336.10	8,590.1	2,058.5	1,503.0	2,548.8	0.19	-0.11	
9,137.0	0.80	351.50	8,685.1	2,059.8	1,502.7	2,549.6	0.23	0.00	
9,233.0	1.00	272.70	8,781.1	2,060.5	1,501.7	2,549.6	1.20	0.21	
9,328.0	1.10	275.00	8,876.1	2,060.6	1,500.0	2,548.7	0.11	0.11	
9,423.0	0.40	227.00	8,971.0	2,060.4	1,498.8	2,547.9	0.93	-0.74	
9,518.0	0.50	210.10	9,066.0	2,059.9	1,498.4	2,547.2	0.17	0.11	
9,613.0	0.30	237.40	9,161.0	2,059.4	1,498.0	2,546.5	0.29	-0.21	
9,708.0	0.40	200.10	9,256.0	2,058.9	1,497.7	2,546.0	0.26	0.11	
9,804.0	0.60	111.20	9,352.0	2,058.4	1,498.0	2,545.8	0.74	0.21	
9,899.0	0.40	127.50	9,447.0	2,058.0	1,498.7	2,545.9	0.26	-0.21	
9,994.0	0.60	120.30	9,542.0	2,057.6	1,499.4	2,545.9	0.22	0.21	
10,089.0	0.10	81.40	9,637.0	2,057.4	1,499.9	2,546.1	0.55	-0.53	
10,184.0	0.40	163.40	9,732.0	2,057.0	1,500.1	2,545.9	0.42	0.32	
10,279.0	1.20	177.40	9,827.0	2,055.7	1,500.3	2,544.9	0.86	0.84	
10,374.0	3.00	176.10	9,921.9	2,052.3	1,500.5	2,542.3	1.90	1.89	
10,469.0	2.50	177.60	10,016.8	2,047.7	1,500.7	2,538.8	0.53	-0.53	

Cathedral Energy Services

Survey Report

Company: Laramie Energy II, LLC.	Local Co-ordinate Reference: Well South Leverich 18-05C
Project: Helmer Gulch	TVD Reference: SL 18-05C KBE @ 8028.0ft (Grey Wolf 706)
Site: NESE Sec 13-T7S-R94W	MD Reference: SL 18-05C KBE @ 8028.0ft (Grey Wolf 706)
Well: South Leverich 18-05C	North Reference: True
Wellbore: DD	Survey Calculation Method: Minimum Curvature
Design: DD	Database: US EDM 2003.21 Multi Users DB

Targets									
Target Name	Dip Angle	Dip Dir.	TVD	+N/-S	+E/-W	Northing	Easting	Latitude	Longitude
- hit/miss target	(°)	(°)	(ft)	(ft)	(ft)	(ft)	(ft)		
- Shape									
S Leverich 18-05C Tgt	0.00	0.00	7,970.0	2,022.7	1,486.4	1,593,967.62	2,343,810.06	39.441168	-107.823705
- survey misses target center by 31.2ft at 8421.0ft MD (7969.2 TVD, 2049.7 N, 1501.9 E)									
- Point									
S Leverich 18-05C BHL	0.00	0.00	10,178.0	2,022.7	1,486.4	1,593,967.62	2,343,810.06	39.441168	-107.823705
- survey misses target center by 163.7ft at 10469.0ft MD (10016.8 TVD, 2047.7 N, 1500.7 E)									
- Circle (radius 50.0)									

Survey Annotations					
Measured Depth	Vertical Depth	Local Coordinates		Comment	
(ft)	(ft)	+N/-S (ft)	+E/-W (ft)		
10,469.0	10,016.9	2,047.7	1,500.7	Last DP Survey @ 10469' MD	

Checked By: _____	Approved By: _____	Date: _____
-------------------	--------------------	-------------