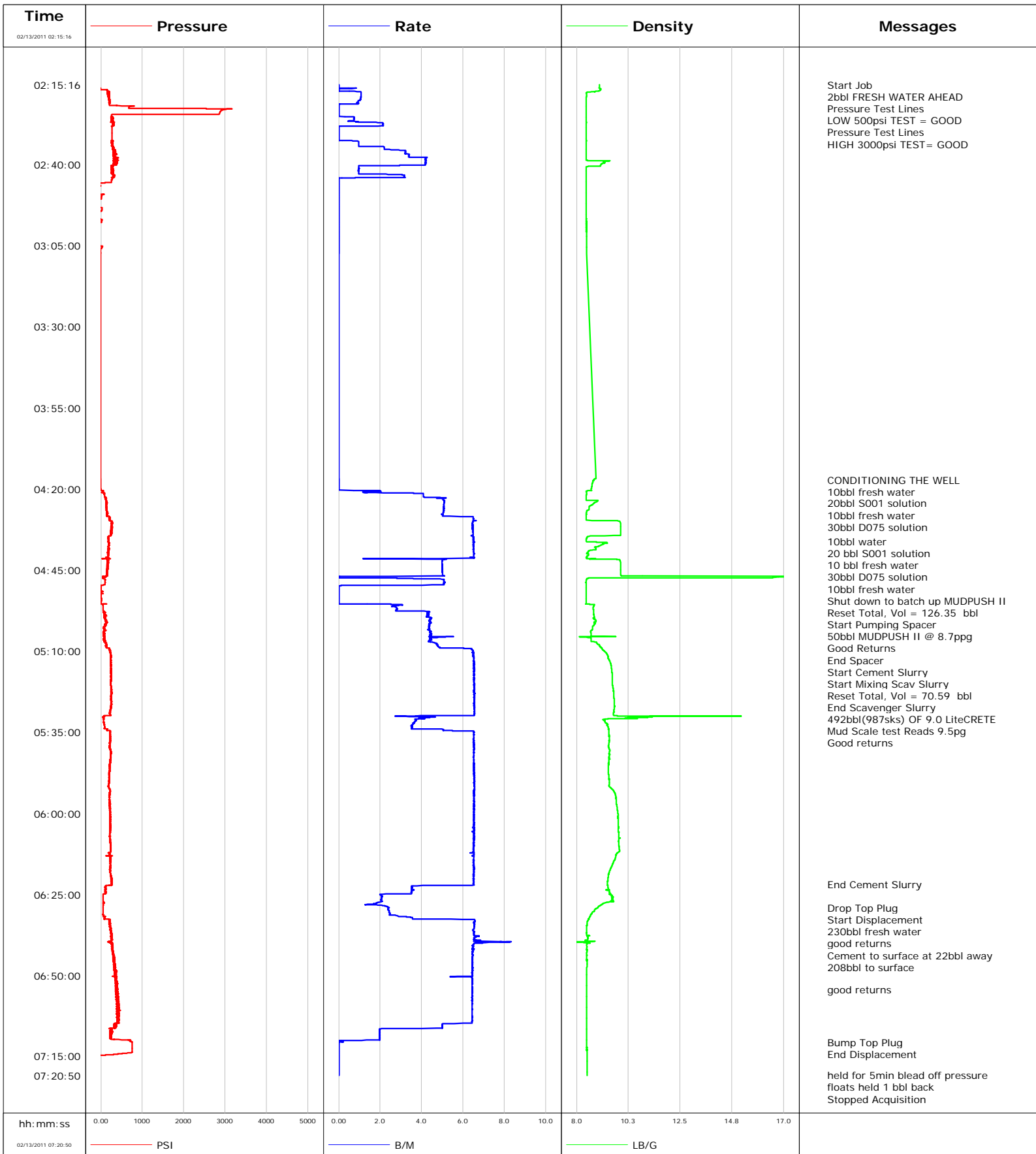


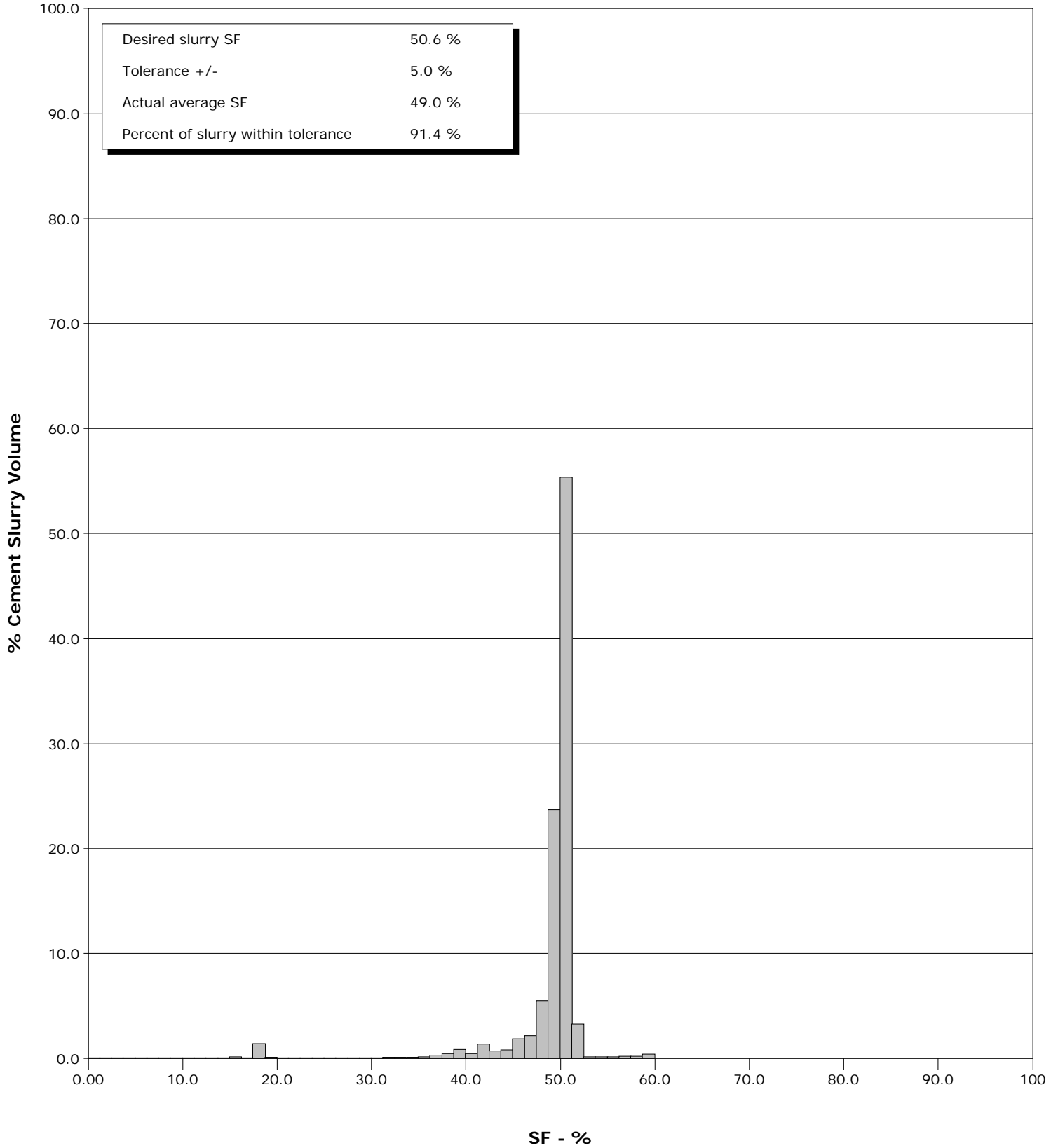
Well	SGU 8515E-24 F25 496	Client	Encana oil Gas
Field	Story Gulch	SIR No.	000465870
Engineer	Dustin Krueger	Job Type	3022ft 9 5/8 surface
Country	United States	Job Date	02-13-2011



Well SGU 8515E-24 F25 496
Field Story Gulch
Engineer Dustin Krueger
Country United States

Client Encana oil Gas
SIR No. 000465870
Job Type 3022ft 9 5/8 surface
Job Date 02-13-2011

Cement Slurry - 02/13/2011 05:05:08 to 02/13/2011 06:22:00





Cementing Service Report

Customer Encana oil & Gas				Job Number 000465870							
Well SGU 8515E-24 F25 496 SGU 8515E-24 F25 496			Location (legal) Story Gulch			Schlumberger Location Grand Junction		Job Start Feb/13/2011			
Field Story Gulch		Formation Name/Type Shale		Deviation 0 deg		Bit Size 14.8 in		Well MD 3022.0 ft		Well TVD 3022.0 ft	
County Garfield		State/Province Colorado		BHP		BHST 115 degF		BHCT 95 degF		Pore Press. Gradient	
Well Master 0631238405		API/UWI									
Rig Name Patterson 308		Drilled For Gas		Service Via Land		Casing/Liner					
						Depth, ft	Size, in	Weight, lb/ft	Grade	Thread	
Offshore Zone		Well Class New		Well Type Development		120.0	20.000	94.0	N/A	N/A	
						3022.0	9.630	36.0	J55	8RD	
Drilling Fluid Type Spud Mud		Max. Density 8.60 lb/gal		Plastic Viscosity 20.000 cP		Tubing/Drill Pipe					
						Depth,	Size,	Weight,	Grade	Thread	
Service Line Cementing		Job Type 3022ft 9 5/8 surface									
Max. Allowed Tub. Press 3000 psi		Max. Allowed Ann. Press 500 psi		WH Connection Single Cement head		Perforations/Open Hole					
						Top,	Bottom,		No. of Shots	Total Interval	
Service Instructions Cement 9 5/8" Surface Casing @ 3022ft w/ 30% Excess with: 10bbl water 20bbl S001 solution 10bbl water 30bbl Zonelock 10bbl water 10bbl water 20bbl S001 solution 10bbl water 30bbl Zonelock										Diameter	
						Treat Down Casing	Displacement 230.0 bbl		Packer Type		Packer Depth
						Tubing Vol.	Casing Vol. 233.6 bbl		Annular Vol. 384.0 bbl		Openhole Vol. 635.0 bbl
Casing/Tubing Secured <input checked="" type="checkbox"/>		1 Hole Vol. Circulated prior to Cement <input checked="" type="checkbox"/>		Casing Tools				Squeeze Job			
Lift Pressure 102 psi				Shoe Type Guide		Squeeze Type					
Pipe Rotated <input type="checkbox"/>		Pipe Reciprocated <input type="checkbox"/>		Shoe Depth 3022.0 ft		Tool Type					
No. Centralizers 32		Top Plugs 1		Bottom Plugs		Stage Tool Type		Tool Depth			
Cement Head Type Single						Stage Tool Depth		Tail Pipe Size			
Job Scheduled For Feb/12/2011 16:00		Arrived on Location Feb/12/2011 15:00		Leave Location Feb/13/2011 09:00		Collar Type Float		Tail Pipe Depth			
						Collar Depth 2975.0 ft		Sqz. Total Vol.			
Date	Time 24-hr clock	Treating Pressure PSI	Flow Rate B/M	Density LB/G	Volume BBL	Message					
02/13/2011	02:15:10					Started Acquisition					
02/13/2011	02:15:12					PRE JOB SAFETY MEETING					
02/13/2011	02:15:16	-17	0.0	8.99	0.0						
02/13/2011	02:15:18					Start Job					
02/13/2011	02:15:18	-17	0.0	9.00	0.0						
02/13/2011	02:15:20					2bbl FRESH WATER AHEAD					
02/13/2011	02:15:20	-17	0.0	8.99	0.0						
02/13/2011	02:15:24					Pressure Test Lines					
02/13/2011	02:15:24	-17	0.0	8.99	0.0						
02/13/2011	02:15:38					LOW 500psi TEST = GOOD					
02/13/2011	02:15:38	-17	0.0	8.99	0.0						
02/13/2011	02:15:41					Pressure Test Lines					
02/13/2011	02:15:41	-17	0.0	8.99	0.0						
02/13/2011	02:15:44					HIGH 3000psi TEST= GOOD					
02/13/2011	02:15:44	-17	0.0	8.99	0.0						
02/13/2011	02:17:40	168	1.1	8.49	0.4						
02/13/2011	02:20:10	205	1.0	8.43	3.1						
02/13/2011	02:22:40	710	0.0	8.43	4.1						
02/13/2011	02:25:10	250	0.3	8.43	4.1						
02/13/2011	02:27:40	314	2.1	8.43	7.0						
02/13/2011	02:30:10	264	0.0	8.43	7.9						

Well		Field		Job Start		Customer		Job Number	
SGU 8515E-24 F25 496 SGU 8515E-24 F25 496		Story Gulch		Feb/13/2011		Encana oil & Gas		000465870	
Date	Time 24-hr clock	Treating Pressure PSI	Flow Rate B/M	Density LB/G	Volume BBL	Message			
02/13/2011	02:37:40	338	3.5	8.43	19.3				
02/13/2011	02:40:10	370	4.2	9.05	29.8				
02/13/2011	02:42:40	295	1.0	8.42	32.5				
02/13/2011	02:45:10	259	0.0	8.42	36.1				
02/13/2011	02:47:40	-15	0.0	8.42	36.1				
02/13/2011	02:50:10	-16	0.0	8.43	36.1				
02/13/2011	02:52:40	-15	0.0	8.43	36.1				
02/13/2011	02:55:10	-14	0.0	8.43	36.1				
02/13/2011	02:57:40	18	0.0	8.43	36.1				
02/13/2011	03:00:10	-13	0.0	8.43	36.1				
02/13/2011	03:02:40	-13	0.0	8.43	36.1				
02/13/2011	03:05:10	37	0.0	8.43	36.1				
02/13/2011	04:17:05					CONDITIONING THE WELL			
02/13/2011	04:17:05					10bbl fresh water			
02/13/2011	04:17:05	-2	0.0	8.76	36.1				
02/13/2011	04:17:40	-5	0.0	8.72	36.1				
02/13/2011	04:20:10	1	0.0	8.63	36.1				
02/13/2011	04:22:40	120	4.8	8.43	43.4				
02/13/2011	04:24:14					20bbl S001 solution			
02/13/2011	04:24:14	140	5.1	8.77	51.3				
02/13/2011	04:25:10	125	5.1	8.61	56.1				
02/13/2011	04:27:40	149	5.0	8.42	68.7				
02/13/2011	04:28:10					10bbl fresh water			
02/13/2011	04:28:10	148	5.0	8.42	71.2				
02/13/2011	04:29:52					30bbl D075 solution			
02/13/2011	04:29:52	258	6.5	9.81	81.8				
02/13/2011	04:30:10	268	6.5	9.89	83.7				
02/13/2011	04:32:40	251	6.5	9.92	99.9				
02/13/2011	04:35:10	177	6.5	8.43	116.1				
02/13/2011	04:36:11					10bbl water			
02/13/2011	04:36:11	176	6.5	8.42	122.7				
02/13/2011	04:37:40	179	6.5	8.96	132.3				
02/13/2011	04:39:51					20 bbl S001 solution			
02/13/2011	04:39:51	175	6.5	8.44	146.5				
02/13/2011	04:40:01					10 bbl fresh water			
02/13/2011	04:40:01	169	6.5	8.52	147.6				
02/13/2011	04:40:10	181	6.5	8.53	148.6				
02/13/2011	04:41:51					30bbl D075 solution			
02/13/2011	04:41:51	173	5.0	9.86	158.6				
02/13/2011	04:42:40	175	5.0	9.91	162.7				
02/13/2011	04:45:10	161	5.0	9.92	175.1				
02/13/2011	04:47:40	64	3.6	8.47	184.7				
02/13/2011	04:47:41					10bbl fresh water			
02/13/2011	04:47:41	61	3.6	8.46	184.7				
02/13/2011	04:50:10	5	0.0	8.43	194.8				
02/13/2011	04:50:43					Shut down to batch up MUDPUSH II			
02/13/2011	04:50:43	5	0.0	8.43	194.8				
02/13/2011	04:52:25					Reset Total, Vol = 126.35 bbl			
02/13/2011	04:52:25	9	0.0	8.42	194.8				
02/13/2011	04:52:40	5	0.0	8.42	194.8				
02/13/2011	04:55:10	6	0.0	8.43	194.8				
02/13/2011	04:55:37					Start Pumping Spacer			
02/13/2011	04:55:37	41	2.8	8.70	195.0				
02/13/2011	04:56:13					50bbl MUDPUSH II @ 8.7ppg			

Well			Field	Job Start	Customer	Job Number
SGU 8515E-24 F25 496 SGU 8515E-24 F25 496			Story Gulch	Feb/13/2011	Encana oil & Gas	000465870
Date	Time 24-hr clock	Treating Pressure PSI	Flow Rate B/M	Density LB/G	Volume BBL	Message
02/13/2011	04:56:13	50	2.6	8.74	196.7	
02/13/2011	04:57:40	75	3.4	8.74	200.7	
02/13/2011	05:00:10	106	4.4	8.77	211.5	
02/13/2011	05:02:40	70	4.3	8.70	222.5	
02/13/2011	05:05:06					End Spacer
02/13/2011	05:05:06	89	4.5	8.62	233.2	
02/13/2011	05:05:08					Start Cement Slurry
02/13/2011	05:05:08	73	4.4	8.63	233.4	
02/13/2011	05:05:10					Start Mixing Scav Slurry
02/13/2011	05:05:10	65	4.4	8.62	233.5	
02/13/2011	05:07:40	117	4.7	8.90	244.9	
02/13/2011	05:10:10	224	6.5	9.23	258.6	
02/13/2011	05:11:13					Reset Total, Vol = 70.59 bbl
02/13/2011	05:11:13	239	6.5	9.34	265.4	
02/13/2011	05:12:40	237	6.5	9.41	274.9	
02/13/2011	05:15:10	245	6.5	9.52	291.2	
02/13/2011	05:15:25					End Scavenger Slurry
02/13/2011	05:15:25	242	6.5	9.52	292.8	
02/13/2011	05:15:36					492bbl(987sks) OF 9.0 LiteCRETE
02/13/2011	05:15:36	241	6.5	9.53	294.0	
02/13/2011	05:15:37					Mud Scale test Reads 9.5pg
02/13/2011	05:15:37	255	6.5	9.53	294.1	
02/13/2011	05:15:38					Good returns
02/13/2011	05:15:38	240	6.5	9.53	294.2	
02/13/2011	05:17:40	251	6.5	9.55	307.5	
02/13/2011	05:20:10	248	6.5	9.56	323.8	
02/13/2011	05:22:40	259	6.5	9.61	340.2	
02/13/2011	05:25:10	250	6.5	9.64	356.5	
02/13/2011	05:27:40	252	6.5	9.64	372.9	
02/13/2011	05:30:10	83	3.7	10.95	388.5	
02/13/2011	05:32:40	82	3.6	9.35	398.0	
02/13/2011	05:35:10	226	6.5	9.40	409.5	
02/13/2011	05:37:40	226	6.5	9.41	425.8	
02/13/2011	05:40:10	219	6.5	9.42	442.1	
02/13/2011	05:42:40	244	6.5	9.41	458.4	
02/13/2011	05:45:10	213	6.5	9.39	474.6	
02/13/2011	05:47:40	198	6.5	9.39	491.0	
02/13/2011	05:50:10	196	6.5	9.42	507.3	
02/13/2011	05:52:40	219	6.5	9.56	523.7	
02/13/2011	05:55:10	211	6.5	9.71	540.0	
02/13/2011	05:57:40	221	6.5	9.75	556.3	
02/13/2011	06:00:10	223	6.5	9.79	572.7	
02/13/2011	06:02:40	219	6.5	9.81	589.0	
02/13/2011	06:05:10	224	6.5	9.81	605.3	
02/13/2011	06:07:40	221	6.5	9.83	621.6	
02/13/2011	06:10:10	236	6.5	9.85	637.9	
02/13/2011	06:12:40	213	6.5	9.73	654.1	
02/13/2011	06:15:10	229	6.5	9.60	670.4	
02/13/2011	06:17:40	216	6.5	9.44	686.7	
02/13/2011	06:20:10	248	6.5	9.37	703.0	
02/13/2011	06:22:00					End Cement Slurry
02/13/2011	06:22:00	260	6.5	9.35	714.9	
02/13/2011	06:22:40	117	3.5	9.36	718.2	
02/13/2011	06:25:10	59	2.0	9.47	726.7	

Well		Field		Job Start	Customer	Job Number
SGU 8515E-24 F25 496 SGU 8515E-24 F25 496		Story Gulch		Feb/13/2011	Encana oil & Gas	000465870
Date	Time 24-hr clock	Treating Pressure PSI	Flow Rate B/M	Density LB/G	Volume BBL	Message
02/13/2011	06:29:07					Drop Top Plug
02/13/2011	06:29:07	59	2.4	8.92	734.7	
02/13/2011	06:29:08					Start Displacement
02/13/2011	06:29:08	59	2.4	8.92	734.7	
02/13/2011	06:29:11					230bbl fresh water
02/13/2011	06:29:11	59	2.5	8.91	734.8	
02/13/2011	06:29:12					good returns
02/13/2011	06:29:12	59	2.5	8.91	734.9	
02/13/2011	06:30:10	57	2.4	8.78	737.2	
02/13/2011	06:32:20					Cement to surface at 22bbl away
02/13/2011	06:32:20					208bbl to surface
02/13/2011	06:32:20	96	3.6	8.55	743.1	
02/13/2011	06:32:40	73	3.6	8.51	744.3	
02/13/2011	06:35:10	231	6.5	8.45	760.5	
02/13/2011	06:37:40	258	6.5	8.45	776.8	
02/13/2011	06:40:10	260	6.5	8.46	793.8	
02/13/2011	06:42:40	302	6.5	8.45	810.0	
02/13/2011	06:45:10	303	6.5	8.45	826.1	
02/13/2011	06:47:40	346	6.5	8.45	842.3	
02/13/2011	06:50:10	350	6.5	8.45	858.4	
02/13/2011	06:52:40	353	6.5	8.45	874.4	
02/13/2011	06:54:22					good returns
02/13/2011	06:54:22	362	6.5	8.45	885.4	
02/13/2011	06:55:10	401	6.4	8.45	890.6	
02/13/2011	06:57:40	402	6.5	8.45	906.7	
02/13/2011	07:00:10	438	6.4	8.45	922.8	
02/13/2011	07:02:40	381	6.5	8.45	938.9	
02/13/2011	07:05:10	328	5.0	8.45	954.5	
02/13/2011	07:07:40	221	2.0	8.44	963.2	
02/13/2011	07:10:10	699	0.0	8.45	967.9	
02/13/2011	07:10:40					Bump Top Plug
02/13/2011	07:10:40	762	0.0	8.45	968.0	
02/13/2011	07:10:41					End Displacement
02/13/2011	07:10:41	761	0.0	8.45	968.0	
02/13/2011	07:12:40	754	0.0	8.45	968.0	
02/13/2011	07:15:10	-19	0.0	8.45	968.0	
02/13/2011	07:17:40	-17	0.0	8.45	968.0	
02/13/2011	07:20:10	-16	0.0	8.45	968.0	
02/13/2011	07:20:43					held for 5min bleed off pressure
02/13/2011	07:20:43					floats held 1 bbl back
02/13/2011	07:20:43	-15	0.0	8.45	968.0	
02/13/2011	07:20:53					Stopped Acquisition
02/13/2011	08:20:53					Wated to clear paracite line
02/13/2011	08:20:53					pumped 10bbl got returns around 8bbl away
02/13/2011	08:27:53					riged down

Well SGU 8515E-24 F25 496 SGU 8515E-24 F25 496	Field Story Gulch	Job Start Feb/13/2011	Customer Encana oil & Gas	Job Number 000465870
--	-----------------------------	---------------------------------	-------------------------------------	--------------------------------

Post Job Summary

Average Pump Rates,					Volume of Fluid Injected, bbl				
Slurry	N2	Mud	Maximum Rate		Total Slurry 492.0	Mud 0.0	Spacer 50.0	N2	
Treating Pressure Summary, psi					Breakdown Fluid				
Maximum 3000	Final 360	Average 250	Bump Plug to 790	Breakdown 275	Type FreshWater	Volume 873.0 bbl		Density 8.34 lb/gal	
Avg. N2 Percent	Designed Slurry Volume 492.0 bbl		Displacement 230.0 bbl	Mix Water Temp 75 degF	Cement Circulated to Surface? <input checked="" type="checkbox"/>		Volume 208.0 bbl		
Customer or Authorized Representative Robert Escojeda					Schlumberger Supervisor Dustin Krueger		Washed Thru Perfs <input type="checkbox"/>		To
							Circulation Lost <input type="checkbox"/>		Job Completed <input checked="" type="checkbox"/>
							-		-