



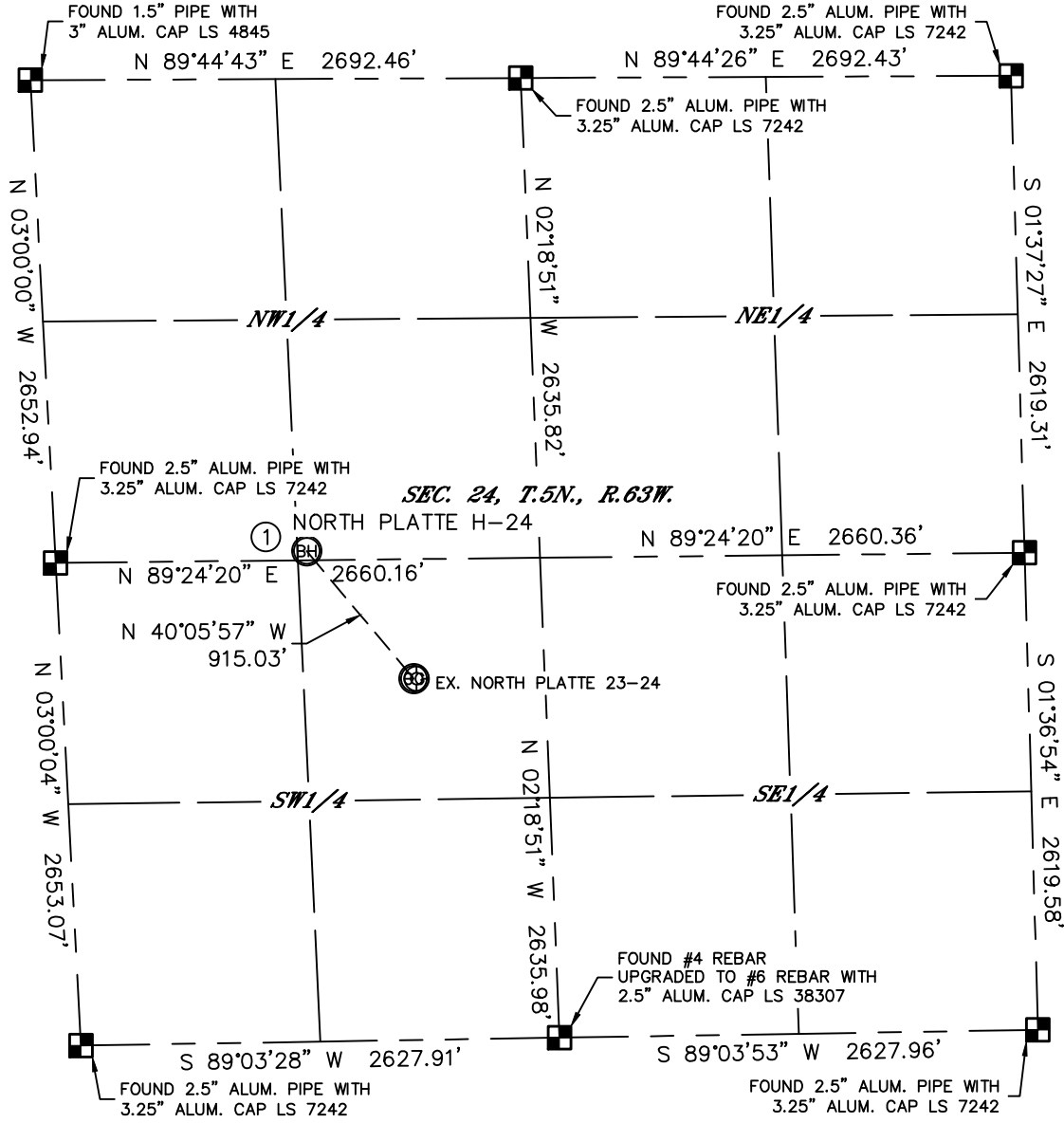
Lat40°, Inc. 1635 Foxtrail Drive, Suite 325 Loveland, CO 970-776-3321

MULTI-WELL PLAN

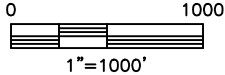
NORTH PLATTE 23-24 PAD

THIS MAP DOES NOT REPRESENT A BOUNDARY SURVEY

SECTION: 24
TOWNSHIP: 5N
RANGE: 63W



①
-BOTTOM HOLE-
NORTH PLATTE H-24
2592' FNL
1379' FWL
LAT: 40.38480°N
LONG: 104.38906°W



LEGEND

- = ALIQUOT MONUMENT AS DESCRIBED
- = CALCULATED POSITION

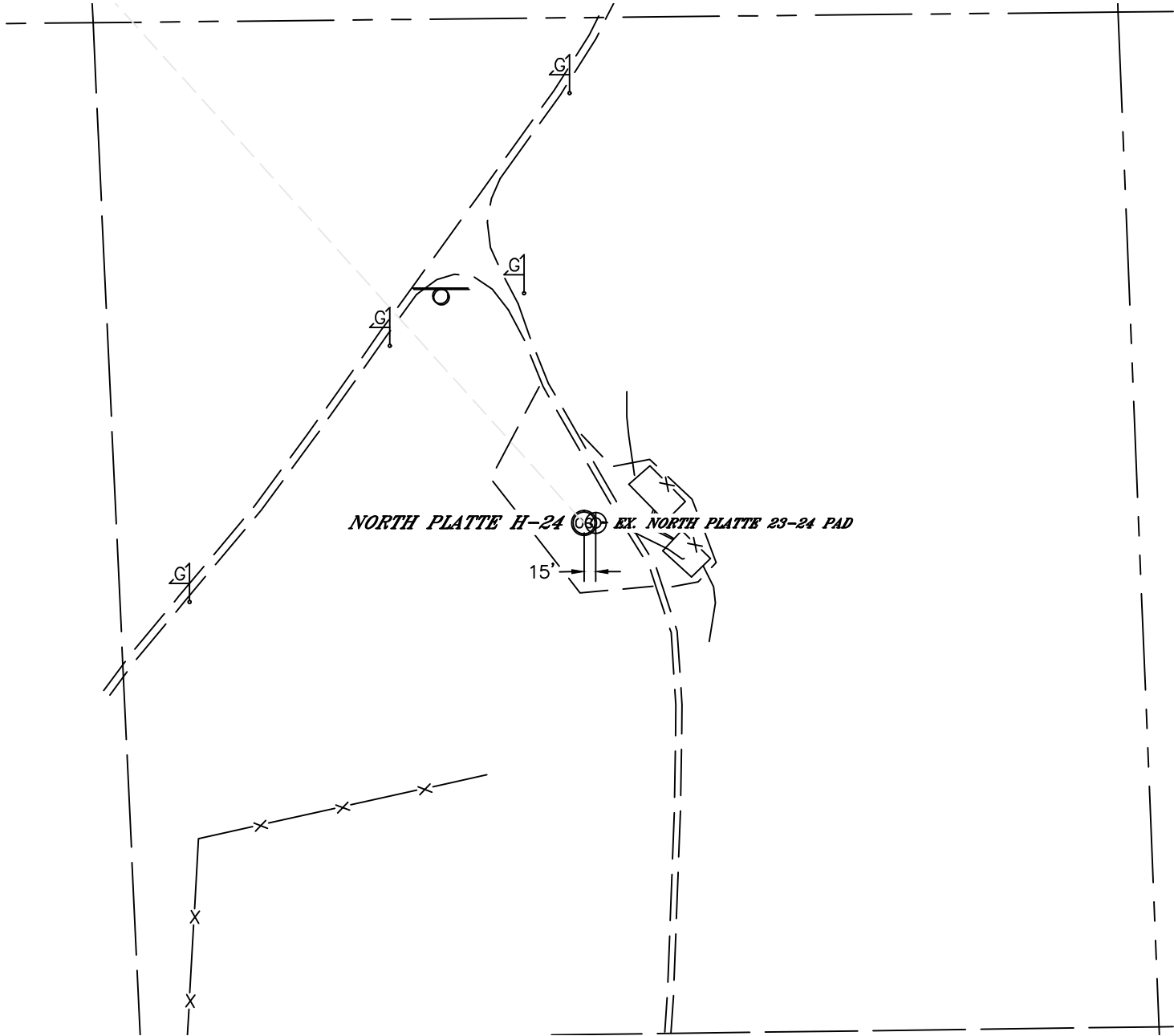
DATE: 7/10/2012
PROJECT#: 2012050



Lat40°, Inc. 1635 Foxtrail Drive, Suite 325 Loveland, CO 970-776-3321

MULTI-WELL PLAN
NORTH PLATTE 23-24 PAD

SECTION: 24
TOWNSHIP: 5N
RANGE: 63W



DATE: 7/10/2012
PROJECT#: 2012050