

---

**MESA ENERGY PARTNERS LLC**

---

**Buckhorn Draw Unit 1-9-299  
WILD CAT  
Rio Blanco County , Colorado**

**Squeeze Perfs**  
26-Oct-2010

**Post Job Report**

*The Road to Excellence Starts with Safety*

<b>Sold To #:</b> 358666	<b>Ship To #:</b> UNKNOWN	<b>Quote #:</b>	<b>Sales Order #:</b> 7728488
<b>Customer:</b> MESA ENERGY PARTNERS LLC		<b>Customer Rep:</b> Chaney, Phil	
<b>Well Name:</b> Buckhorn Draw Unit		<b>Well #:</b> 1-9-299	<b>API/UWI #:</b>
<b>Field:</b> WILD CAT	<b>City (SAP):</b> Rangely	<b>County/Parish:</b> Rio Blanco	<b>State:</b> Colorado
<b>Contractor:</b> FRONTIER		<b>Rig/Platform Name/Num:</b> FRONTIER 2	
<b>Job Purpose:</b> Squeeze Perfs			
<b>Well Type:</b> Development Well		<b>Job Type:</b> Squeeze Perfs	
<b>Sales Person:</b> KOHL, KYLE		<b>Srvc Supervisor:</b> STILLSON, ERIC	<b>MBU ID Emp #:</b> 393789

**Job Personnel**

HES Emp Name	Exp Hrs	Emp #	HES Emp Name	Exp Hrs	Emp #	HES Emp Name	Exp Hrs	Emp #
FINK, JOHN	9	476032	JENSEN, SHANE Lynn	9	441759	MOGK, JOHN A	9	465036
STILLSON, ERIC W	9	393789	WEAVER, CARLTON Russell	9	457698			

**Equipment**

HES Unit #	Distance-1 way	HES Unit #	Distance-1 way	HES Unit #	Distance-1 way	HES Unit #	Distance-1 way
10616651C	110 mile	10784064	110 mile	10995025	110 mile	11006314	110 mile
11259882	110 mile						

**Job Hours**

Date	On Location Hours	Operating Hours	Date	On Location Hours	Operating Hours	Date	On Location Hours	Operating Hours
10-26-10	9	3						

**TOTAL** Total is the sum of each column separately

**Job**

**Job Times**

Formation Name	Top	Bottom	Called Out	Date	Time	Time Zone
<b>Formation Depth (MD)</b>			<b>On Location</b>	25 - Oct - 2010	23:30	MST
<b>Form Type</b>		BHST	<b>On Location</b>	26 - Oct - 2010	05:00	MST
<b>Job depth MD</b>	1255. ft	<b>Job Depth TVD</b>	<b>Job Started</b>	26 - Oct - 2010	09:17	MST
<b>Water Depth</b>		<b>Wk Ht Above Floor</b>	<b>Job Completed</b>	26 - Oct - 2010	12:13	MST
<b>Perforation Depth (MD)</b>	From 1200	To 1248	<b>Departed Loc</b>	26 - Oct - 2010	14:30	MST

**Well Data**

Description	New / Used	Max pressure psig	Size in	ID in	Weight lbm/ft	Thread	Grade	Top MD ft	Bottom MD ft	Top TVD ft	Bottom TVD ft
<b>Sales/Rental/3<sup>rd</sup> Party (HES)</b>											

Description	Qty	Qty uom	Depth	Supplier
R/A DENSOMETER W/CHART RECORDER,/JOB,ZI	1	JOB		
ADC (AUTO DENSITY CTRL) SYS, /JOB,ZI	1	JOB		

**Tools and Accessories**

Type	Size	Qty	Make	Depth	Type	Size	Qty	Make	Depth	Type	Size	Qty	Make
Guide Shoe					Packer					Top Plug			
Float Shoe					Bridge Plug					Bottom Plug			
Float Collar					Retainer					SSR plug set			
Insert Float										Plug Container			
Stage Tool										Centralizers			

**Miscellaneous Materials**

Gelling Agt	Conc	Surfactant	Conc	Acid Type	Qty	Conc %
Treatment Fld	Conc	Inhibitor	Conc	Sand Type	Size	Qty

Fluid Data									
Stage/Plug #: 1									
Fluid #	Stage Type	Fluid Name	Qty	Qty uom	Mixing Density lbm/gal	Yield ft <sup>3</sup> /sk	Mix Fluid Gal/sk	Rate bbl/min	Total Mix Fluid Gal/sk
1	Fresh Water Spacer		3	bbl	8.33	.0	.0	2	
2	Tail Cement	SQUEEZECEM (TM) SYSTEM (452971)	100	sacks	15.8	1.15	4.98	4	4.98
	4.98 Gal	FRESH WATER							
3	Fresh Water Displacement		13.7	bbl	8.33	.0	.0	4	
Calculated Values		Pressures		Volumes					
Displacement	13.7	Shut In: Instant	280	Lost Returns	0	Cement Slurry	20	Pad	
Top Of Cement		5 Min		Cement Returns	1	Actual Displacement	13.7	Treatment	
Frac Gradient		15 Min		Spacers	3	Load and Breakdown		Total Job	
Rates									
Circulating		Mixing	4	Displacement	4	Avg. Job			
Cement Left In Pipe	Amount	0 ft	Reason						
Frac Ring # 1 @	ID	Frac ring # 2 @	ID	Frac Ring # 3 @	ID	Frac Ring # 4 @	ID		
The Information Stated Herein Is Correct				Customer Representative Signature					

*The Road to Excellence Starts with Safety*

<b>Sold To #:</b> 358666	<b>Ship To #:</b> UNKNOWN	<b>Quote #:</b>	<b>Sales Order #:</b> 7728488
<b>Customer:</b> MESA ENERGY PARTNERS LLC		<b>Customer Rep:</b> Chaney, Phil	
<b>Well Name:</b> Buckhorn Draw Unit		<b>Well #:</b> 1-9-299	<b>API/UWI #:</b>
<b>Field:</b> WILD CAT	<b>City (SAP):</b> Rangely	<b>County/Parish:</b> Rio Blanco	<b>State:</b> Colorado
<b>Legal Description:</b>			
<b>Lat:</b> N 0 deg. OR N 0 deg. 0 min. 0 secs.		<b>Long:</b> E 0 deg. OR E 0 deg. 0 min. 0 secs.	
<b>Contractor:</b> FRONTIER		<b>Rig/Platform Name/Num:</b> FRONTIER 2	
<b>Job Purpose:</b> Squeeze Perfs			<b>Ticket Amount:</b>
<b>Well Type:</b> Development Well		<b>Job Type:</b> Squeeze Perfs	
<b>Sales Person:</b> KOHL, KYLE		<b>Srvc Supervisor:</b> STILLSON, ERIC	<b>MBU ID Emp #:</b> 393789

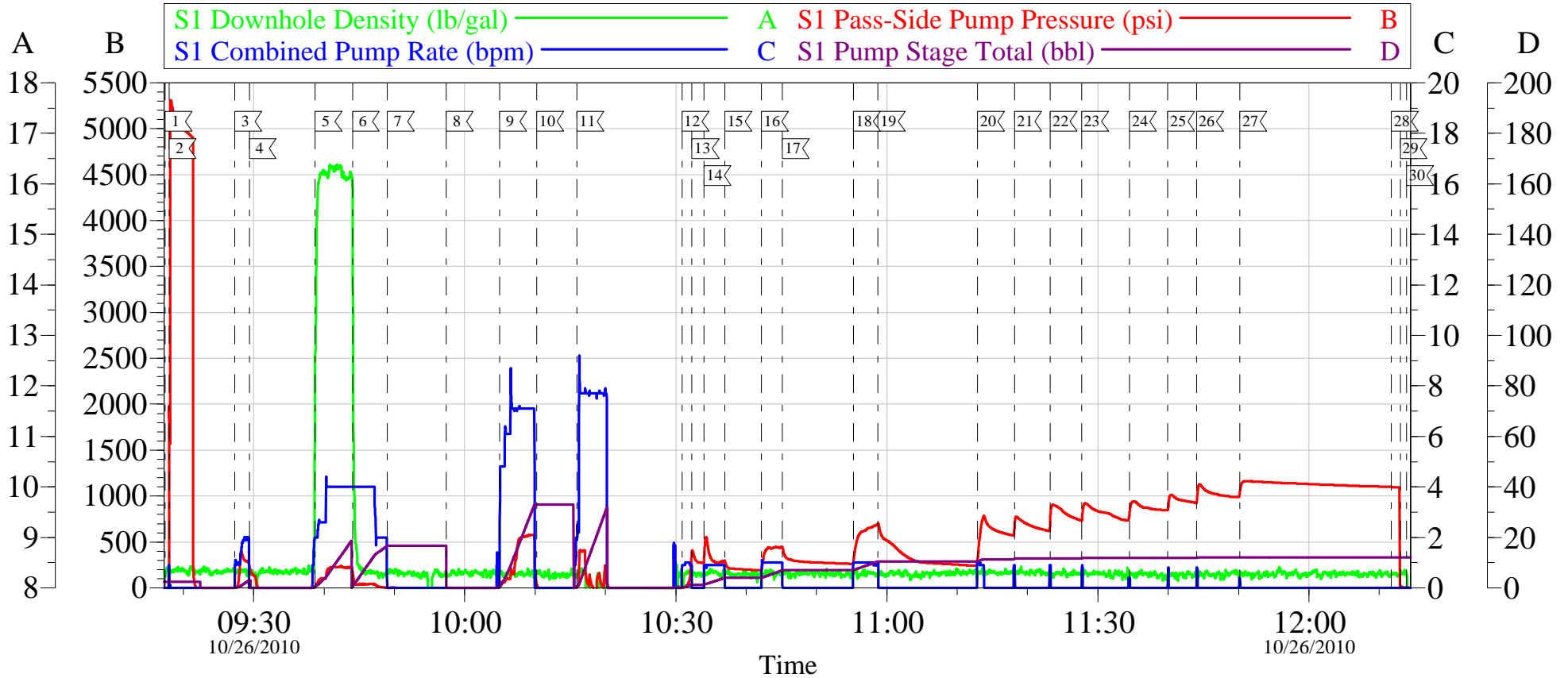
Activity Description	Date/Time	Cht #	Rate bbl/min	Volume bbl		Pressure psig		Comments
				Stage	Total	Tubing	Casing	
Call Out	10/25/2010 23:30							
Pre-Convoy Safety Meeting	10/26/2010 01:30							ENTIRE CREW, OBSERVE ALL SAFE DRIVING PROCEDURES
Arrive At Loc	10/26/2010 05:00							ARRIVED ON TIME
Assessment Of Location Safety Meeting	10/26/2010 05:20							REVIEWED EMERGENCY PLAN, ASSESSED WORK AREA AND SPOTTED EQUIPMENT.
Pre-Rig Up Safety Meeting	10/26/2010 05:50							ENTIRE CREW, WALKED THROUGH RIG UP LOOKING FOR HAZARDS.
Rig-Up Equipment	10/26/2010 06:00							1 PICK UP, 1 HT400 PUMP TRUCK, 1 660 BULK CEMENT TRUCK, 1 DRILL PIN SWAGE, 1 SQUEEZE MANIFOLD.
Pre-Job Safety Meeting	10/26/2010 08:40							ENTIRE CREW, CO REP AND RIG CREW.
Start Job	10/26/2010 09:01							4 1/2 16.6# DRILL PIPE IN 9 5/8 36# CASING SET TO 1255', PACKER AT 1260, PERFS AT 1200' AND 1248'.
Pump Water	10/26/2010 09:01		2	2			20.0	FILL LINES BEFORE TESTING

Activity Description	Date/Time	Cht #	Rate bbl/min	Volume bbl		Pressure psig		Comments
				Stage	Total	Tubing	Casing	
Pressure Test	10/26/2010 09:03		0.5	0.1			3000.0	PRESSURE DROPPING OFF, TESTED ALL VALVE UNTIL FOUND PROBLEM, HAD LEAKING IRON AND A BAD VALVE, FIXED PROBLEMS AND RETESTED LINES.
Pressure Test	10/26/2010 09:17		0.5	0.1			4950.0	RETEST LINES, PRESSURE HELD, NO LEAKS.
Injection Test	10/26/2010 09:27		2	3			400.0	FRESH WATER, 3 BBLs PUMPED PER CO REP, ISIP 280.
Pump Tail Cement	10/26/2010 09:38		4	20.6			220.0	160 SKS SQUEEZECEM, 15.8 PPG, 1.16 CUFT/SK, 4.98 GAL/SK.
Pump Displacement	10/26/2010 09:44		4	13.7			220.0	FRESH WATER BEHIND CEMENT TO BALANCE.
Shutdown	10/26/2010 09:49							RIG PULLED 4 STANDS UP TO 883'.
Reverse Circ Well	10/26/2010 10:04		7	30			560.0	FRESH WATER, APPROX 1 BBL OF CEMENT TO PIT.
Shutdown	10/26/2010 10:10							RIG PULLED REMAINING DRILL PIPE OUT OF HOLE AND WILL SQUEEZE BY PUMPING INTO KILL LINE IN CELLAR WITH THE RAMS CLOSED UP TOP, WHILE WAITING HES SWAPPED LINES TO PIT TO CLEAN PUMP.
Start Squeeze	10/26/2010 10:30		1	2	2		450.0	BEGIN SQUEEZE
Shutdown	10/26/2010 10:32							HESITATION USED 12 TIMES.
Resume Squeeze	10/26/2010 10:34		1	2	4		550.0	
Shutdown	10/26/2010 10:36							
Resume Squeeze	10/26/2010 10:42		1	3	7		440.0	

Activity Description	Date/Time	Cht #	Rate bbl/min	Volume bbl		Pressure psig		Comments
				Stage	Total	Tubing	Casing	
Shutdown	10/26/2010 10:45							
Resume Squeeze	10/26/2010 10:55		1	3.2	10.2		700.0	
Shutdown	10/26/2010 10:58							
Resume Squeeze	10/26/2010 11:12		1	1.2	11.4		800.0	
Shutdown	10/26/2010 11:13							
Resume Squeeze	10/26/2010 11:18		1	0.2	11.6		800.0	
Shutdown	10/26/2010 11:18							
Resume Squeeze	10/26/2010 11:23		1	0.1	11.7		900.0	
Shutdown	10/26/2010 11:23							
Resume Squeeze	10/26/2010 11:27		1	0.1	11.8		920.0	
Shutdown	10/26/2010 11:27							PRESSURE BLEEDING BACK TO 900 PSI.
Resume Squeeze	10/26/2010 11:34		1	0.1	11.9		940.0	
Shutdown	10/26/2010 11:34							PRESSURE BLEEDING BACK TO 700 PSI.
Resume Squeeze	10/26/2010 11:39		1	0.1	12		1015.0	
Shutdown	10/26/2010 11:39							PRESSURE BLEEDING BACK TO 800 PSI.
Resume Squeeze	10/26/2010 11:44		1	0.01	12		1130.0	
Shutdown	10/26/2010 11:44							PRESSURE BLEEDING BACK TO 900 PSI.
Resume Squeeze	10/26/2010 11:50		1	0.01	12		1160.0	
Shutdown	10/26/2010 11:50							PRESSURE HOLDING AT 1160, HELD PRESSURE FOR 20 MIN PER CO REP, BLED OFF TO 1100 PSI.
Shut In Well	10/26/2010 12:11							SHUT IN PRESSURE AT WELL AT 1100 PSI AND BLED OFF PRESSURE ON IRON.

Activity Description	Date/Time	Cht #	Rate bbl/min	Volume bbl		Pressure psig		Comments
				Stage	Total	Tubing	Casing	
End Job	10/26/2010 12:12							
Post-Job Safety Meeting (Pre Rig-Down)	10/26/2010 12:15							ENTIRE CREW
Rig-Down Equipment	10/26/2010 13:00							
Pre-Convoy Safety Meeting	10/26/2010 14:20							
Crew Leave Location	10/26/2010 14:30							THANK YOU FOR USING HALLIBURTON, ERIC STILLSON AND CREW.

# MESA ENERGY BLOCK SQUEEZE



Local Event Log								
1	START JOB	09:17:24	2	PRESSURE TEST	09:17:58	3	PUMP INJECTION TEST	09:27:20
4	ISIP	09:29:22	5	PUMP TAIL CEMENT	09:38:42	6	PUMP DISPLACEMENT	09:44:03
7	SHUTDOWN	09:49:01	8	RIG PULL 4 STANDS	09:57:23	9	REVERSE CIRCULATE	10:04:59
10	SHUTDOWN	10:10:16	11	CLEAN PUMP	10:15:58	12	SQUEEZE	10:30:53
13	HESITATE	10:32:19	14	SQUEEZE	10:34:00	15	HESITATE	10:36:58
16	SQUEEZE	10:42:12	17	HESITATE	10:45:10	18	SQUEEZE	10:55:14
19	HESITATE	10:58:46	20	SQUEEZE/HESITATE	11:12:55	21	SQUEEZE/HESITATE	11:18:11
22	SQUEEZE/HESITATE	11:23:12	23	SQUEEZE/HESITATE	11:27:41	24	SQUEEZE/HESITATE	11:34:30
25	SQUEEZE/HESITATE	11:39:57	26	SQUEEZE/HESITATE	11:44:00	27	SQUEEZE/HOLD PRESSURE	11:50:11
28	CLOSE IN WELL	12:11:44	29	RELEASE IRON PRESSURE	12:12:59	30	END JOB	12:13:52

Customer: MESA ENERGY	Job Date: 26-Oct-2010	Sales Order #: 7728488
Well Description: BDU 1-9-299	Job Type: SQUEEZE	ADC Used: YES
Company Rep: PHIL CHANEY	Cement Supervisor: ERIC STILLSON	Elite #: 4 RUSTY WEAVER