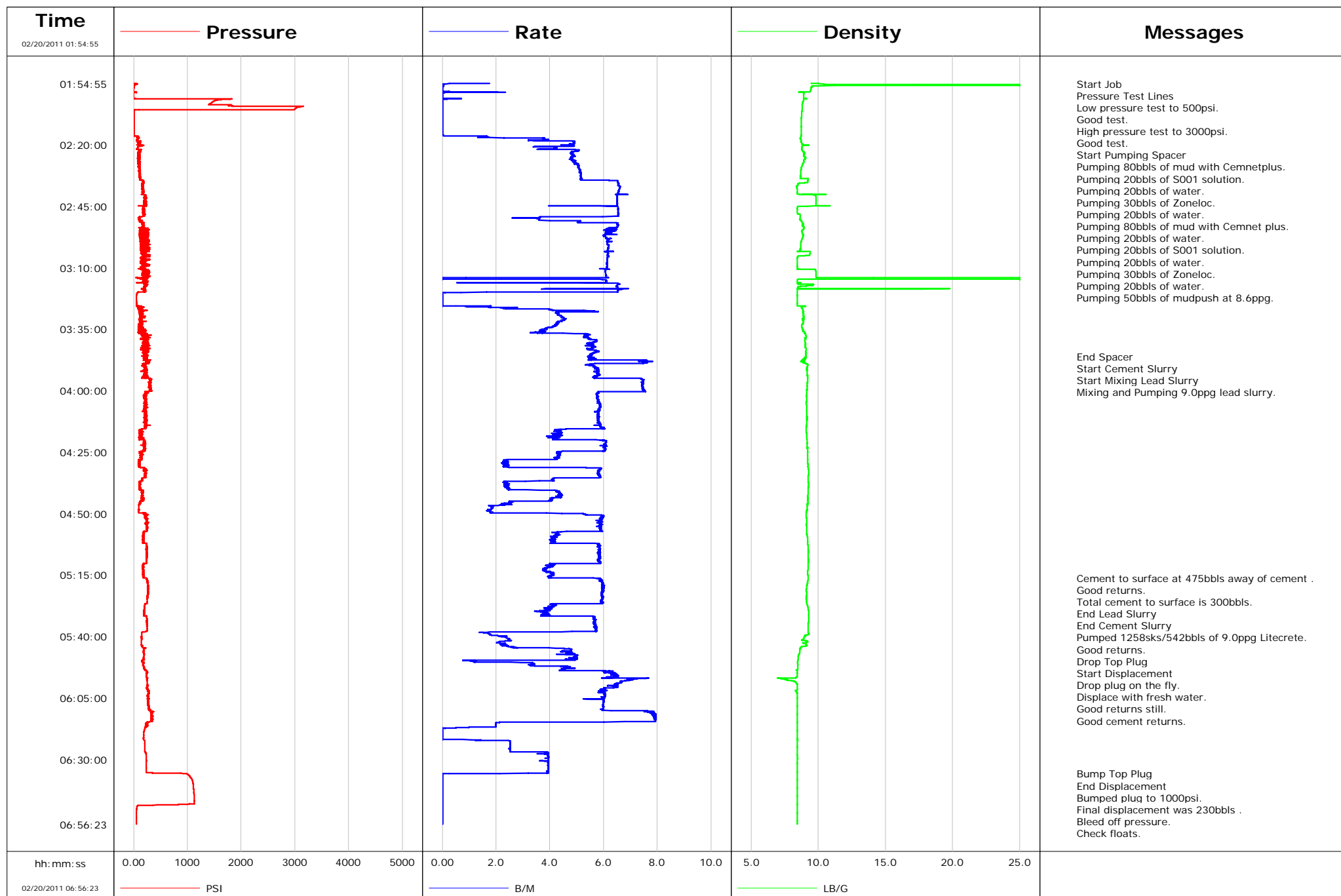


Well SGU 8502D-25
Field STORY GULCH
Engineer JEFF PATTERSON
Country United States

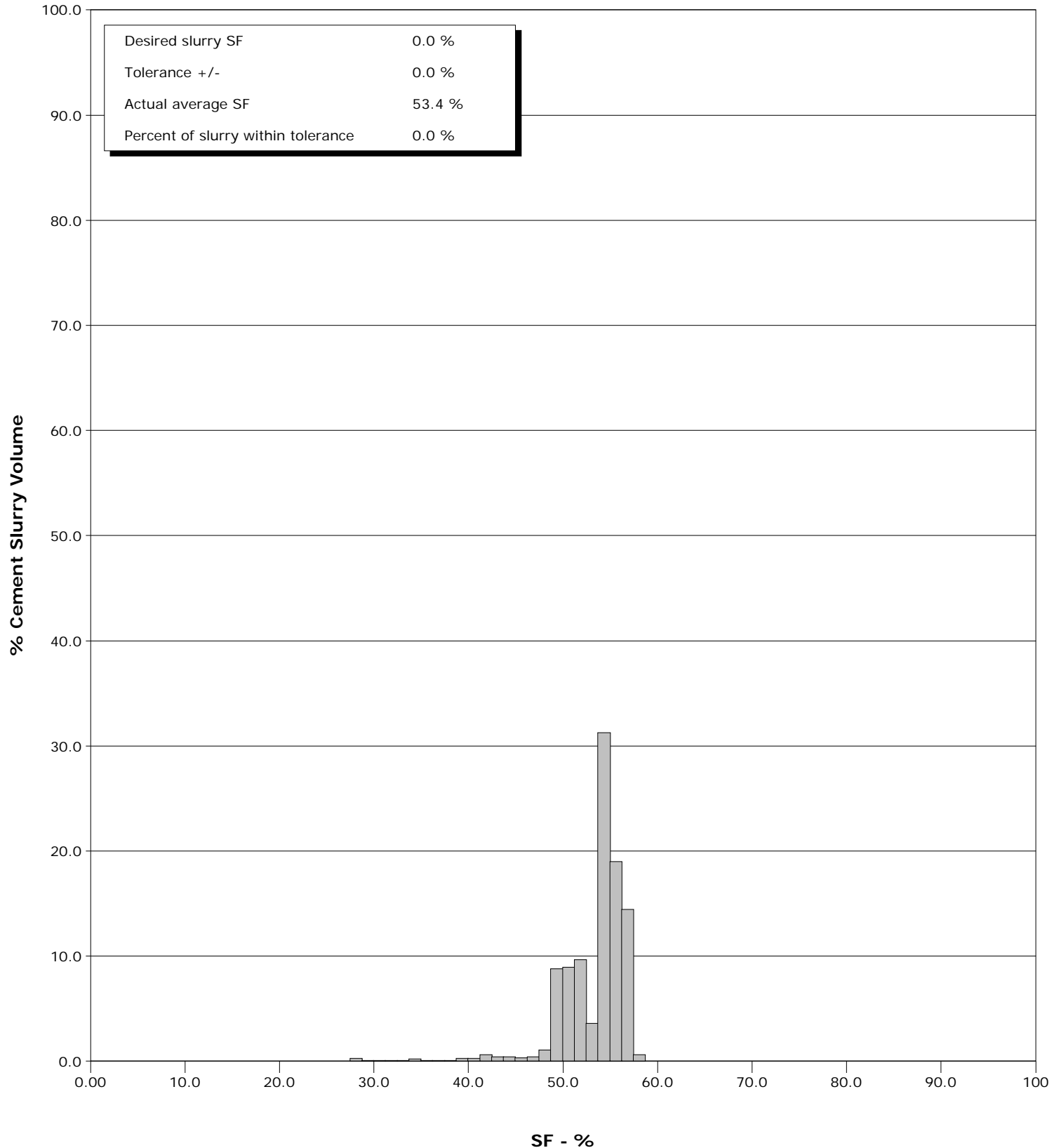
Client ENCANA
SIR No. BJ90-00152
Job Type 9 5/8" SURFACE
Job Date 02-19-2011



Well SGU 8502D-25
Field STORY GULCH
Engineer JEFF PATTERSON
Country United States

Client ENCANA
SIR No. BJ90-00152
Job Type 9 5/8" SURFACE
Job Date 02-19-2011

Cement Slurry - 02/20/2011 03:46:14 to 02/20/2011 05:28:26



Cementing Service Report

				Customer ENCANA				Job Number BJ90-00152					
Well SGU 8502D-25 SGU 8502D-25			Location (legal) F25			Schlumberger Location GRAND JUNCTION, COLORADO			Job Start Feb/19/2011				
Field STORY GULCH		Formation Name/Type SHALE		Deviation 0 deg		Bit Size 14.8 in		Well MD 3030.0 ft		Well TVD 3030.0 ft			
County GARFIELD		State/Province Colorado		BHP psi		BHST 115 degF		BHCT 95 degF		Pore Press. Gradient lb/gal			
Well Master 0631238407		API/UWI											
Rig Name PATTERSON 306		Drilled For Gas		Service Via Land		Casing/Liner							
						Depth, ft		Size, in		Weight, lb/ft			
										Grade			
										Thread			
Offshore Zone		Well Class New		Well Type Development		3030.0		9.6		36.0			
						0.0		0.0		0.0			
Drilling Fluid Type		Max. Density lb/gal		Plastic Viscosity cP		Tubing/Drill Pipe							
						T/D		Depth, ft		Size, in			
										Weight, lb/ft			
										Grade			
										Thread			
Service Line Cementing		Job Type 9 5/8" SURFACE											
Max. Allowed Tub. Press 3000 psi		Max. Allowed Ann. Press psi		WH Connection 9 5/8" CEMENT HEAD		Perforations/Open Hole							
						Top, ft		Bottom, ft		shot/ft			
						ft		ft		No. of Shots			
						ft		ft		Total Interval ft			
						ft		ft		Diameter in			
						Treat Down Casing		Displacement 230.8 bbl		Packer Type			
										Packer Depth ft			
						Tubing Vol. bbl		Casing Vol. 234.2 bbl		Annular Vol. 385.0 bbl			
										Openhole Vol. 636.0 bbl			
Casing/Tubing Secured <input checked="" type="checkbox"/>		1 Hole Vol. Circulated prior to Cement <input checked="" type="checkbox"/>		Casing Tools				Squeeze Job					
Lift Pressure 1499 psi				Shoe Type Guide				Squeeze Type					
Pipe Rotated <input type="checkbox"/>		Pipe Reciprocated <input type="checkbox"/>		Shoe Depth 3030.0 ft				Tool Type					
No. Centralizers		Top Plugs 1		Bottom Plugs		Stage Tool Type				Tool Depth ft			
Cement Head Type Single						Stage Tool Depth ft				Tail Pipe Size in			
Job Scheduled For Feb/19/2011		Arrived on Location Feb/19/2011		Leave Location Feb/19/2011		Collar Type Float				Tail Pipe Depth ft			
						Collar Depth 2986.0 ft				Sqz. Total Vol. bbl			
Date	Time 24-hr clock	Treating Pressure PSI	Flow Rate B/M	Density LB/G	Volume BBL	Message							
02/20/2011	01:54:55	17	1.8	9.46	103.8	Started Acquisition							
02/20/2011	01:56:11	3	0.0	9.54	104.0	Pressure Test Lines							
02/20/2011	01:56:13	2	0.0	9.54	104.0	Low pressure test to 500psi.							
02/20/2011	01:56:14	2	0.0	9.54	0.0	Good test.							
02/20/2011	01:56:15	2	0.0	9.53	0.0	Start Pumping Spacer							
02/20/2011	01:56:16	2	0.0	9.53	0.0	Pumping 80bbbls of mud with Cemnetplus.							
02/20/2011	01:56:17	2	0.0	9.53	0.0	Pumping 30bbbls of Zoneloc.							
02/20/2011	01:56:35	1	0.0	9.50	0.0								
02/20/2011	01:58:15	-1	0.0	9.44	0.0								
02/20/2011	01:59:55	-5	0.0	8.93	0.4								
02/20/2011	02:01:35	1621	0.0	8.93	0.6								
02/20/2011	02:03:15	1412	0.0	8.83	0.6								
02/20/2011	02:04:55	3022	0.0	8.80	0.6								
02/20/2011	02:06:35	3	0.0	8.79	0.6								
02/20/2011	02:08:15	3	0.0	8.77	0.6								
02/20/2011	02:09:55	3	0.0	8.75	0.6								
02/20/2011	02:11:35	2	0.0	8.75	0.6								
02/20/2011	02:13:15	3	0.0	8.75	0.6								
02/20/2011	02:14:55	4	0.0	8.75	0.6								
02/20/2011	02:16:35	81	1.6	8.71	1.0								
02/20/2011	02:18:15	52	3.3	8.74	5.9								

Well			Field		Job Start	Customer		Job Number
SGU 8502D-25 SGU 8502D-25			STORY GULCH		Feb/19/2011	ENCANA		BJ90-00152
Date	Time 24-hr clock	Treating Pressure PSI	Flow Rate B/M	Density LB/G	Volume BBL	Message		
02/20/2011	02:19:41	86	4.7	8.83	12.7	Pumping 20bbls of water.		
02/20/2011	02:19:42	79	4.8	8.84	12.7	Pumping 20bbls of water.		
02/20/2011	02:19:55	115	4.9	8.82	13.8			
02/20/2011	02:21:35	69	4.2	8.79	21.0			
02/20/2011	02:23:15	78	4.8	8.98	28.9			
02/20/2011	02:24:55	97	4.8	9.01	37.0			
02/20/2011	02:26:35	100	4.9	8.93	45.0			
02/20/2011	02:28:15	102	5.1	8.82	53.3			
02/20/2011	02:29:55	111	5.1	8.73	61.7			
02/20/2011	02:31:35	116	5.2	8.70	70.3			
02/20/2011	02:33:15	115	5.2	8.68	78.9			
02/20/2011	02:34:55	171	6.5	9.22	7.6			
02/20/2011	02:36:35	163	6.5	8.46	18.5			
02/20/2011	02:38:15	172	6.6	8.44	8.9			
02/20/2011	02:39:55	161	6.5	8.44	19.8			
02/20/2011	02:41:35	209	6.5	9.83	9.5			
02/20/2011	02:43:15	196	6.5	9.84	20.4			
02/20/2011	02:44:55	237	5.9	9.70	0.7			
02/20/2011	02:46:35	174	6.5	8.44	11.5			
02/20/2011	02:48:15	171	6.5	8.64	22.4			
02/20/2011	02:49:55	106	2.7	8.66	8.5			
02/20/2011	02:51:35	149	5.0	8.82	15.6			
02/20/2011	02:53:15	157	6.5	8.88	26.3			
02/20/2011	02:54:55	166	6.3	8.80	36.9			
02/20/2011	02:56:35	158	6.2	8.89	47.2			
02/20/2011	02:58:15	241	6.2	8.80	57.3			
02/20/2011	02:59:55	221	6.1	8.70	67.6			
02/20/2011	03:01:35	194	6.2	8.69	77.8			
02/20/2011	03:03:15	268	6.1	8.62	88.1			
02/20/2011	03:04:55	267	6.1	9.37	0.1			
02/20/2011	03:06:35	157	6.1	8.45	10.4			
02/20/2011	03:08:15	144	6.1	8.44	8.0			
02/20/2011	03:09:55	128	6.1	8.44	18.2			
02/20/2011	03:11:35	255	6.1	9.83	6.5			
02/20/2011	03:13:15	265	6.1	9.84	16.6			
02/20/2011	03:14:55	190	6.1	8.45	1.2			
02/20/2011	03:16:35	211	6.6	8.49	10.9			
02/20/2011	03:18:15	198	6.5	8.47	21.8			
02/20/2011	03:19:55	104	5.6	8.44	32.4			
02/20/2011	03:21:35	54	0.0	8.44	32.8			
02/20/2011	03:23:15	52	0.0	8.44	32.8			
02/20/2011	03:24:55	56	0.0	8.44	32.8			
02/20/2011	03:26:35	109	2.3	8.81	1.9			
02/20/2011	03:28:15	158	4.3	8.89	9.1			
02/20/2011	03:29:55	128	4.4	8.95	16.3			
02/20/2011	03:31:35	147	4.4	8.92	23.8			
02/20/2011	03:33:15	119	4.2	8.80	31.0			
02/20/2011	03:34:55	95	3.9	8.84	37.8			
02/20/2011	03:36:35	101	3.5	8.97	43.9			
02/20/2011	03:38:15	248	5.4	9.11	52.5			
02/20/2011	03:39:55	237	5.7	8.99	61.7			
02/20/2011	03:41:35	283	5.5	9.06	71.0			
02/20/2011	03:43:15	133	5.4	9.10	6.7			
02/20/2011	03:44:55	201	5.6	9.07	16.1			

Well SGU 8502D-25 SGU 8502D-25			Field STORY GULCH		Job Start Feb/19/2011	Customer ENCANA	Job Number BJ90-00152
Date	Time 24-hr clock	Treating Pressure PSI	Flow Rate B/M	Density LB/G	Volume BBL	Message	
02/20/2011	03:46:14	184	5.5	9.11	23.4	Start Cement Slurry	
02/20/2011	03:46:16	201	5.5	9.08	23.6	Start Mixing Lead Slurry	
02/20/2011	03:46:17	201	5.5	9.08	23.6	Mixing and Pumping 9.0ppg lead slurry.	
02/20/2011	03:46:35	250	5.6	9.02	25.3		
02/20/2011	03:48:15	228	7.6	8.74	35.9		
02/20/2011	03:49:55	179	5.6	9.21	46.6		
02/20/2011	03:51:35	202	5.7	9.16	56.2		
02/20/2011	03:53:15	192	5.8	9.19	65.8		
02/20/2011	03:54:55	154	5.7	9.21	75.3		
02/20/2011	03:56:35	320	7.4	9.21	87.5		
02/20/2011	03:58:15	315	7.4	9.19	99.9		
02/20/2011	03:59:55	306	7.5	9.16	112.4		
02/20/2011	04:01:35	203	5.7	9.15	122.9		
02/20/2011	04:03:15	208	5.8	9.14	132.5		
02/20/2011	04:04:55	219	5.8	9.12	142.1		
02/20/2011	04:06:35	231	5.9	9.14	151.9		
02/20/2011	04:08:15	223	5.8	9.15	161.6		
02/20/2011	04:09:55	202	5.8	9.16	171.3		
02/20/2011	04:11:35	236	5.8	9.16	180.9		
02/20/2011	04:13:15	243	5.8	9.14	190.6		
02/20/2011	04:14:55	212	5.9	9.10	200.4		
02/20/2011	04:16:35	154	4.2	9.11	208.8		
02/20/2011	04:18:15	125	4.4	9.14	216.0		
02/20/2011	04:19:55	138	4.1	9.17	223.0		
02/20/2011	04:21:35	207	6.1	9.18	232.8		
02/20/2011	04:23:15	197	6.0	9.20	242.9		
02/20/2011	04:24:55	145	4.4	9.22	252.6		
02/20/2011	04:26:35	134	4.3	9.22	259.8		
02/20/2011	04:28:15	101	2.3	9.23	266.6		
02/20/2011	04:29:55	107	2.4	9.24	270.5		
02/20/2011	04:31:35	195	5.9	9.26	275.3		
02/20/2011	04:33:15	223	5.8	9.30	285.1		
02/20/2011	04:34:55	215	5.9	9.25	294.8		
02/20/2011	04:36:35	156	4.1	9.26	302.7		
02/20/2011	04:38:15	112	2.3	9.27	307.2		
02/20/2011	04:39:55	108	2.4	9.27	311.2		
02/20/2011	04:41:35	163	4.4	9.25	317.3		
02/20/2011	04:43:15	167	4.3	9.23	324.6		
02/20/2011	04:44:55	138	4.1	9.23	331.4		
02/20/2011	04:46:35	104	2.3	9.22	335.7		
02/20/2011	04:48:15	93	1.8	9.17	338.8		
02/20/2011	04:49:55	169	2.9	9.10	341.8		
02/20/2011	04:51:35	240	6.0	9.12	351.1		
02/20/2011	04:53:15	243	5.9	9.15	360.9		
02/20/2011	04:54:55	242	5.9	9.13	370.7		
02/20/2011	04:56:35	245	5.9	9.14	380.5		
02/20/2011	04:58:15	181	4.3	9.15	388.9		
02/20/2011	04:59:55	184	4.2	9.21	396.0		
02/20/2011	05:01:35	191	4.2	9.22	402.8		
02/20/2011	05:03:15	244	5.9	9.24	411.5		
02/20/2011	05:04:55	243	5.8	9.27	421.3		
02/20/2011	05:06:35	244	5.9	9.25	431.0		
02/20/2011	05:08:15	245	5.9	9.27	440.7		
02/20/2011	05:09:55	242	5.9	9.27	450.4		

Well SGU 8502D-25 SGU 8502D-25			Field STORY GULCH		Job Start Feb/19/2011	Customer ENCANA	Job Number BJ90-00152
Date	Time 24-hr clock	Treating Pressure PSI	Flow Rate B/M	Density LB/G	Volume BBL	Message	
02/20/2011	05:13:15	177	3.8	9.24	464.5		
02/20/2011	05:14:55	178	4.1	9.23	471.2		
02/20/2011	05:16:12	190	4.0	9.26	476.4	Cement to surface at 475bbls away of cement .	
02/20/2011	05:16:13	190	4.0	9.26	476.4	Good returns.	
02/20/2011	05:16:35	246	5.8	9.25	478.4		
02/20/2011	05:16:45	250	5.9	9.25	479.4	Total cement to surface is 300bbls.	
02/20/2011	05:18:15	264	6.0	9.20	488.2		
02/20/2011	05:19:55	268	6.0	9.14	498.2		
02/20/2011	05:21:35	269	6.0	9.12	508.1		
02/20/2011	05:23:15	264	5.9	9.14	518.0		
02/20/2011	05:24:55	254	5.9	9.13	528.0		
02/20/2011	05:26:35	254	5.9	9.16	537.8		
02/20/2011	05:28:15	205	4.1	9.24	545.0		
02/20/2011	05:28:25	203	3.9	9.25	545.6	End Lead Slurry	
02/20/2011	05:28:26	203	3.9	9.25	545.7	End Cement Slurry	
02/20/2011	05:28:28	202	3.8	9.25	545.8	Pumped 1258sks/542bbls of 9.0ppg Litecrete.	
02/20/2011	05:28:32	202	4.0	9.25	546.0	Drop Top Plug	
02/20/2011	05:28:33	202	4.0	9.25	546.2	Start Displacement	
02/20/2011	05:29:55	198	3.8	9.28	551.4		
02/20/2011	05:31:35	190	3.8	9.29	557.8		
02/20/2011	05:33:15	246	5.7	9.28	566.8		
02/20/2011	05:34:55	248	5.6	9.26	576.3		
02/20/2011	05:36:35	253	5.7	9.26	585.7		
02/20/2011	05:38:15	186	3.1	9.26	595.1		
02/20/2011	05:39:55	148	2.4	9.08	598.1		
02/20/2011	05:41:35	145	2.5	8.77	0.2		
02/20/2011	05:43:15	143	2.2	9.09	4.0		
02/20/2011	05:43:18	142	2.2	9.09	4.1	Drop plug on the fly.	
02/20/2011	05:44:55	220	4.4	8.69	8.3		
02/20/2011	05:46:35	187	4.8	8.62	16.1		
02/20/2011	05:48:15	185	4.9	8.52	24.1		
02/20/2011	05:49:55	165	1.2	8.49	31.5		
02/20/2011	05:51:35	168	3.3	8.47	35.5		
02/20/2011	05:53:15	196	4.6	8.47	42.5		
02/20/2011	05:54:55	234	6.3	8.45	51.7		
02/20/2011	05:56:35	248	6.2	8.42	62.4		
02/20/2011	05:58:15	249	6.6	8.20	73.7		
02/20/2011	05:59:55	257	6.4	8.44	84.7		
02/20/2011	06:01:35	258	5.9	8.44	95.2		
02/20/2011	06:03:15	286	6.1	8.44	105.1		
02/20/2011	06:04:55	269	6.0	8.44	115.2		
02/20/2011	06:06:35	276	6.0	8.44	125.1		
02/20/2011	06:08:15	271	6.0	8.45	135.0		
02/20/2011	06:09:55	278	6.0	8.45	145.0		
02/20/2011	06:11:35	325	7.8	8.45	157.3		
02/20/2011	06:13:15	325	7.9	8.45	170.5		
02/20/2011	06:14:55	278	4.7	8.45	183.5		
02/20/2011	06:16:35	225	2.0	8.45	187.0		
02/20/2011	06:18:15	198	0.0	8.45	188.1		
02/20/2011	06:19:55	188	0.0	8.45	188.1		
02/20/2011	06:21:35	184	0.0	8.45	188.1		
02/20/2011	06:23:15	207	2.5	8.44	190.6		
02/20/2011	06:24:55	208	2.5	8.44	194.8		
02/20/2011	06:26:35	208	2.5	8.44	199.0		

Well SGU 8502D-25 SGU 8502D-25			Field STORY GULCH		Job Start Feb/19/2011		Customer ENCANA		Job Number BJ90-00152	
Date	Time 24-hr clock	Treating Pressure PSI	Flow Rate B/M	Density LB/G	Volume BBL	Message				
02/20/2011	06:29:55	234	3.9	8.46	211.3					
02/20/2011	06:31:35	235	3.9	8.44	217.9					
02/20/2011	06:33:15	235	3.9	8.43	224.4					
02/20/2011	06:34:55	234	3.9	8.43	231.0					
02/20/2011	06:35:51	942	1.2	8.43	234.6	Bump Top Plug				
02/20/2011	06:35:52	951	0.5	8.43	234.6	End Displacement				
02/20/2011	06:35:53	956	0.5	8.43	234.6	Bumped plug to 1000psi.				
02/20/2011	06:35:54	956	0.3	8.43	234.6	Floats held got 1.5bbls back.				
02/20/2011	06:36:35	1027	0.0	8.43	234.7					
02/20/2011	06:38:15	1085	0.0	8.44	234.7					
02/20/2011	06:39:55	1104	0.0	8.43	234.7					
02/20/2011	06:41:35	1112	0.0	8.44	234.7					
02/20/2011	06:43:15	1119	0.0	8.44	234.7					
02/20/2011	06:44:55	1126	0.0	8.44	234.7					
02/20/2011	06:46:35	1130	0.0	8.44	234.7					
02/20/2011	06:48:15	1081	0.0	8.44	234.7					
02/20/2011	06:49:55	58	0.0	8.45	234.7					
02/20/2011	06:51:35	52	0.0	8.45	234.7					
02/20/2011	06:53:15	51	0.0	8.44	234.7					
02/20/2011	06:54:55	49	0.0	8.44	234.7					

Post Job Summary

Average Pump Rates, bbl/min					Volume of Fluid Injected, bbl					
Slurry 5.1	N2	Mud	Maximum Rate 8.0		Total Slurry 542.0	Mud 160.0	Spacer 459.4	N2		
Treating Pressure Summary, psi					Breakdown Fluid					
Maximum 3150	Final 49	Average 248	Bump Plug to 1000	Breakdown	Type	Volume bbl	Density lb/gal			
Avg. N2 Percent %		Designed Slurry Volume 0.0 bbl		Displacement 230.0 bbl	Mix Water Temp 75 degF	Cement Circulated to Surface? <input checked="" type="checkbox"/>	Volume 300.0 bbl			
						Washed Thru Perfs <input type="checkbox"/>	To ft			
Customer or Authorized Representative FLOYD ROBERTS			Schlumberger Supervisor JEFF PATTERSON			Circulation Lost <input type="checkbox"/>	Job Completed <input checked="" type="checkbox"/>			
						-	-			