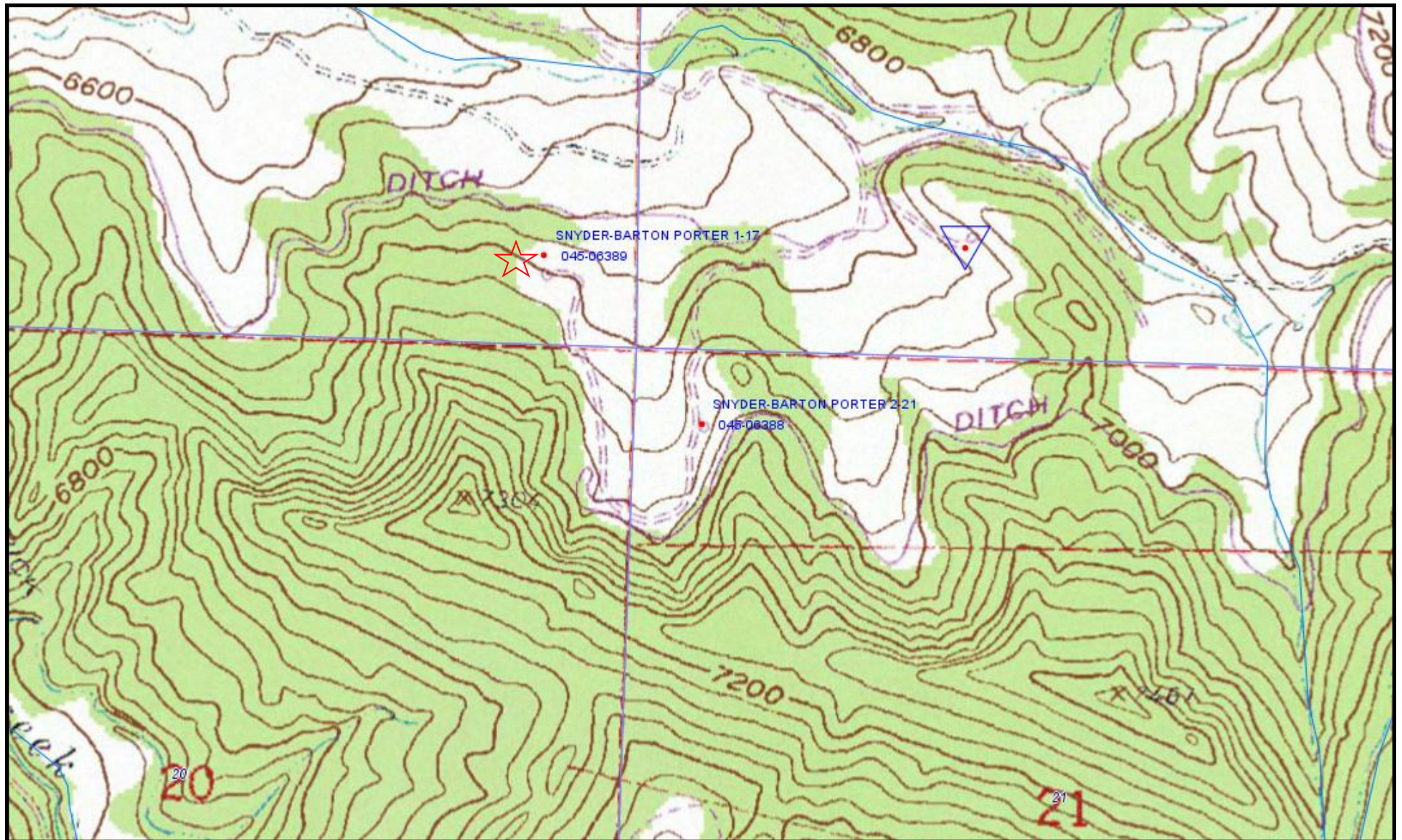


# Snyder-Barton-Porter 1-17 API# 045-06389

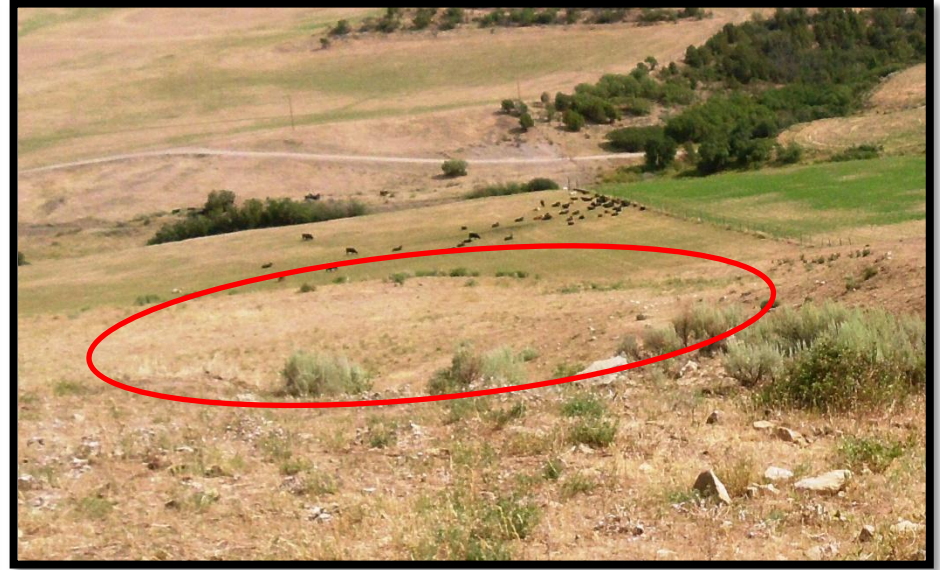


Topographic map.

## Snyder-Barton-Porter 1-17 API# 045-06389



Viewing west. Contact of cut slope and adjacent grounds. Houndstongue & plumeless? (or scotch) thistle in vicinity.



Viewing north and upgradient of location: view of well pad.



Viewing South: well pad footprint, with partial vegetation, and cut slope, and surface modification to promote revegetation.



Viewing south & above of site. Existing access roads to location (road in foreground); & to location 045-06388 (road in background)

## Snyder-Barton-Porter 1-17 API# 045-06389



Google Maps Aerial Photo Date: September 22, 2011. Aerial view of Snyder Barton Porter 1-17 pad and entry access road.

## Snyder-Barton-Porter 1-17 API# 045-06389



Google Maps Aerial Photo Date: June 16 2005. Aerial view of Snyder Barton Porter 1-17 in 2005.