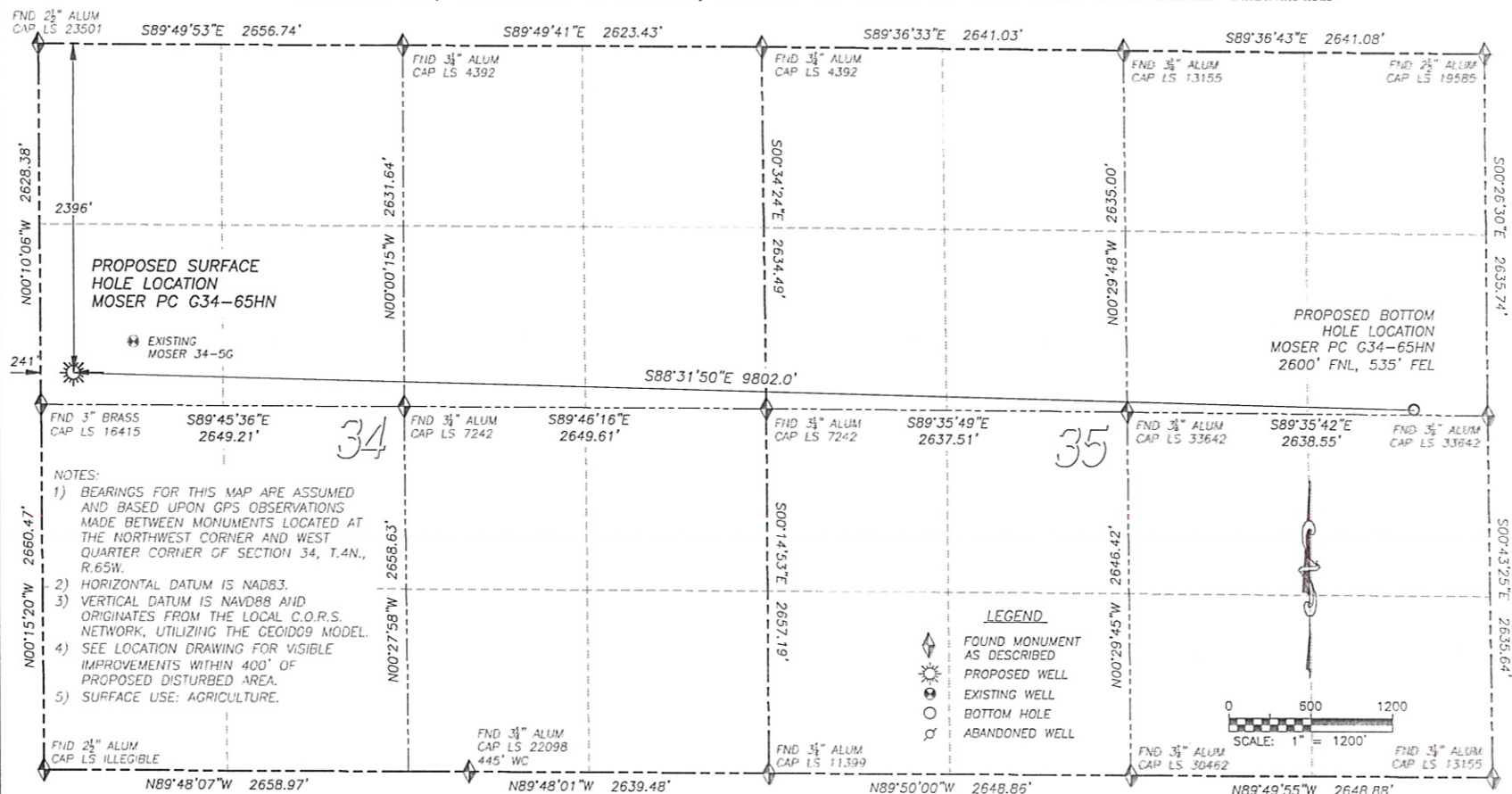


DALEY LAND SURVEYING, INC. PARKER, CO. 80134 303 953 9841  
**WELL LOCATION CERTIFICATE – MOSER PC G34-65HN**  
 SECTION 34, TOWNSHIP 4 NORTH, RANGE 65 WEST OF THE 6TH PRINCIPAL MERIDIAN



**NAD 83 LATITUDE AND LONGITUDE**

**MOSER PC G34-65HN**

**SURFACE HOLE:**

LATITUDE: N40.26955°  
 LONGITUDE: W104.65805°  
 ELEVATION: 4767'  
 FOOTAGE: 2396' FNL, 241' FWL  
 PDOP: 1.1  
 QTR/QTR: SW4/NW4  
 PROP LINE: 233'± SOUTH

**BOTTOM HOLE:**

LATITUDE: N40.26885°  
 LONGITUDE: W104.62295°  
 FOOTAGE: 2600' FNL, 535' FEL  
 OF SECTION 35

**NEAREST EXISTING WELL:**

LATITUDE: N40.27017°  
 LONGITUDE: W104.65648°  
 494' NORTHEAST

IN ACCORDANCE WITH A REQUEST FROM MATT VERBIT OF NOBLE ENERGY INC., DALEY LAND SURVEYING, INC. HAS DETERMINED THE SURFACE LOCATION OF THE MOSER PC G34-65HN WELL TO BE 2396' FNL, 241' FWL, AS MEASURED AT NINETY (90) DEGREES FROM THE SECTION LINES OF SECTION 34, TOWNSHIP 4 NORTH, RANGE 65 WEST OF THE 6TH PRINCIPAL MERIDIAN, WELD COUNTY, COLORADO. THE BOTTOM HOLE LOCATION, PROVIDED BY THE CLIENT, IS TO BE 2600' FNL, 535' FEL OF SECTION 35, T.4N., R.65W.

I HEREBY CERTIFY THAT THIS WELL LOCATION CERTIFICATE WAS PREPARED BY ME OR UNDER MY DIRECT SUPERVISION, THAT THE WORK WAS COMPLETED ON 2/1/2012 FOR AND ON BEHALF OF NOBLE ENERGY, INC., AND THAT THIS MAP DOES NOT REPRESENT A BOUNDARY SURVEY, IT IS NOT A LAND SURVEY PLAT OR AN IMPROVEMENT SURVEY PLAT AND IT IS NOT TO BE RELIED UPON FOR THE ESTABLISHMENT OF FENCE, BUILDING OR OTHER FUTURE IMPROVEMENT LINES.



FOR AND ON BEHALF OF  
 DALEY LAND SURVEYING INC.,  
 Robert Daley, PLS 35597

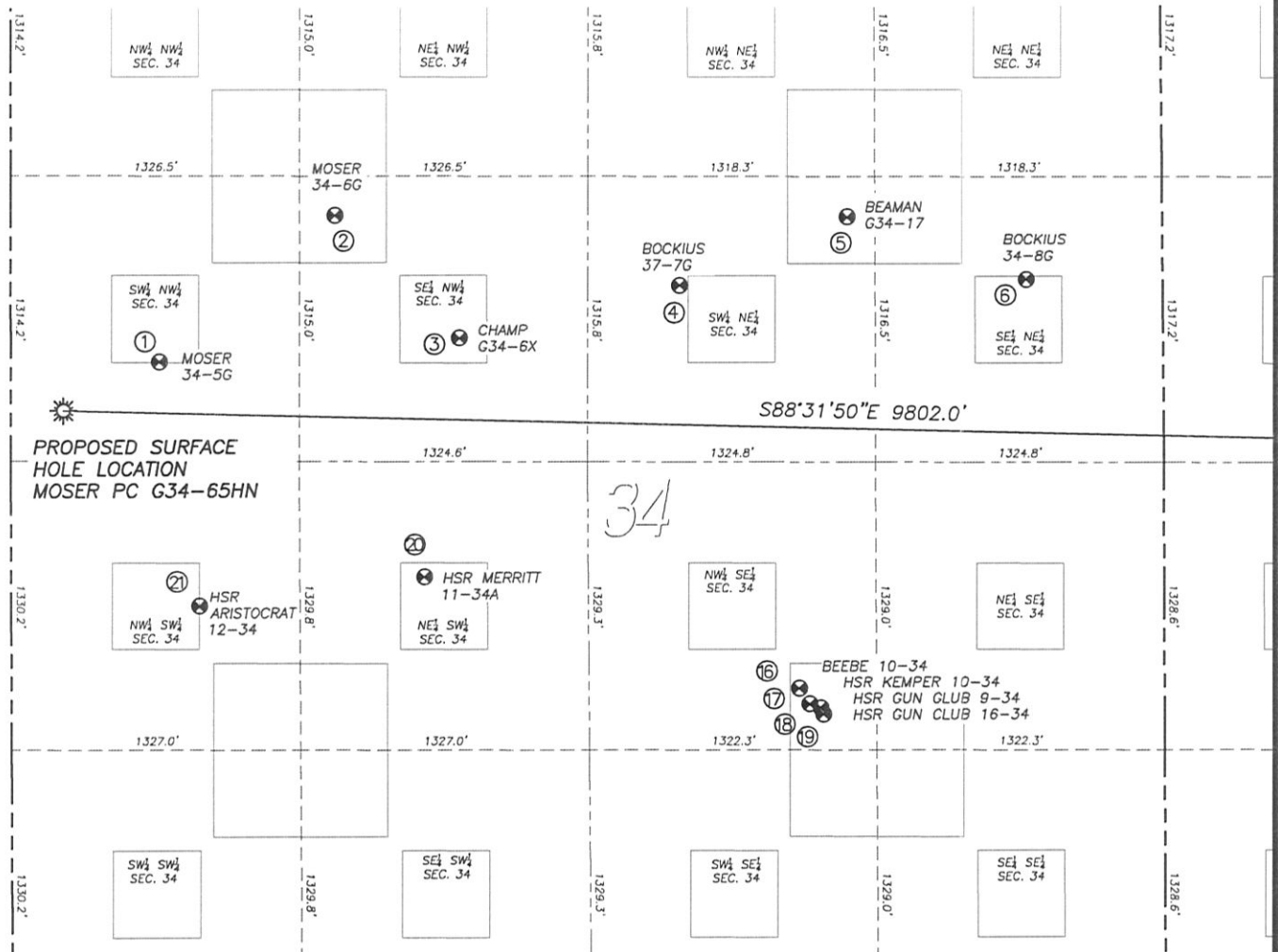
DALEY LAND SURVEYING, INC.

PARKER, CO. 80134

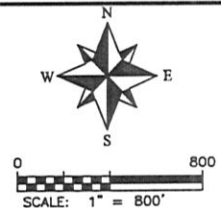
303 953 9841

## SITE SKETCH MOSER PC G34-65HN

SECTION 34, TOWNSHIP 4 NORTH, RANGE 65 WEST OF THE 6TH PRINCIPAL MERIDIAN



	Well Name	Qtr - Qtr	Footage		Latitude	Longitude	Elevation	PDOP
1	MOSER 34-5G	SW NW 34	2170' FNL	681' FWL	40.27017	-104.65648	4765	1.4
2	MOSER 34-6G	SE NW 34	1497' FNL	1488' FWL	40.27201	-104.65359	4760	1.3
3	CHAMP G34-6X	SE NW 34	2061' FNL	2060' FWL	40.27046	-104.65154	4760	1.4
4	BOCKIUS 37-7G	SW NE 34	1819' FNL	2219' FEL	40.27111	-104.64791	4753	1.2
5	BEAMAN G34-17	SW NE 34	1504' FNL	1447' FEL	40.27197	-104.64515	4742	1.3
6	BOCKIUS 34-8G	SE NE 34	1790' FNL	626' FEL	40.27117	-104.64220	4740	1.6
16	BEEBE 10-34	NW SE 34	1612' FSL	1679' FEL	40.26600	-104.64593	4753	1.5
17	HSR-KEMPER 10-34	NW SE 34	1540' FSL	1631' FEL	40.26580	-104.64576	4754	1.5
18	HSR-GUN CLUB 9-34	NW SE 34	1523' FSL	1581' FEL	40.26576	-104.64558	4753	1.5
19	HSR-GUN CLUB 16-34	NW SE 34	1494' FSL	1567' FEL	40.26568	-104.64553	4753	1.5
20	HSR-MERRITT 11-34A	NE SW 34	2128' FSL	1897' FWL	40.26744	-104.65211	4752	1.3
21	HSR-ARISTOCRAT 12-34	NW SW 34	1994' FSL	863' FWL	40.26708	-104.65581	4762	1.4



## LEGEND

- FOUND MONUMENT AS DESCRIBED
- PROPOSED WELL
- EXISTING WELL
- BOTTOM HOLE
- ABANDONED WELL

## NOTES:

1. THIS DOES NOT REPRESENT A BOUNDARY SURVEY
2. HORIZONTAL DATUM IS NAD83
3. VERTICAL DATUM IS NAVD88 AND ORIGINATES FROM THE LOCAL C.O.R.S. NETWORK, UTILIZING THE GEOD09 MODEL

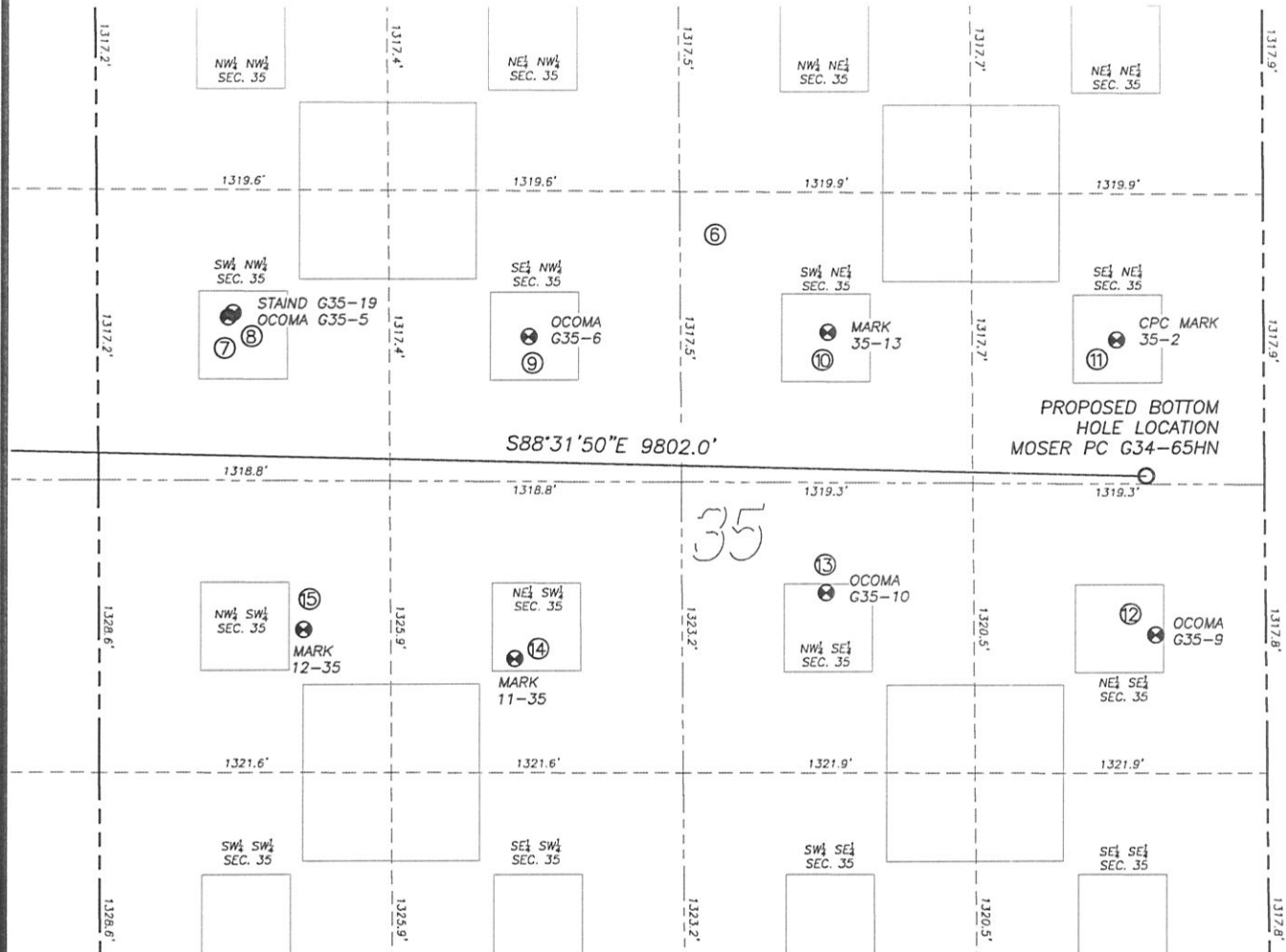
DALEY LAND SURVEYING, INC.

PARKER, CO. 80134

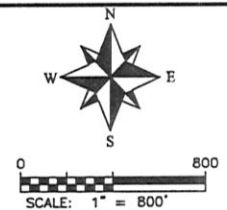
303 953 9841

## SITE SKETCH MOSER PC G34-65HN

SECTION 34, TOWNSHIP 4 NORTH, RANGE 65 WEST OF THE 6TH PRINCIPAL MERIDIAN



	Well Name	Qtr - Qtr	Footage		Latitude	Longitude	Elevation	PDOP
7	OCOMA G35-5	SW NW 35	1895' FNL	590' FWL	40.27087	-104.63784	4749	1.9
8	STAIND G35-19	SW NW 35	1876' FNL	613' FWL	40.27092	-104.63776	4749	2.0
9	OCOMA G35-6	SE NW 35	1979' FNL	1950' FWL	40.27061	-104.63297	4736	1.4
10	MARK 35-13	SW NE 35	1953' FNL	1973' FEL	40.27065	-104.62811	4764	2.2
11	CPC MARK 35-2	SE NE 35	1983' FNL	666' FEL	40.27054	-104.62343	4792	1.1
12	OCOMA G35-9	NE SE 35	1949' FSL	498' FEL	40.26686	-104.62279	4808	2.1
13	OCOMA G35-10	NW SE 35	2142' FSL	1988' FEL	40.26740	-104.62813	4787	2.4
14	MARK 11-35	NE SW 35	1841' FSL	1879' FWL	40.26659	-104.63319	4744	2.4
15	MARK 12-35	NW SW 35	1975' FSL	924' FWL	40.26697	-104.63661	4744	2.4



## LEGEND

- FOUND MONUMENT AS DESCRIBED
- PROPOSED WELL
- EXISTING WELL
- BOTTOM HOLE
- ABANDONED WELL

## NOTES:

1. THIS DOES NOT REPRESENT A BOUNDARY SURVEY
2. HORIZONTAL DATUM IS NAD83
3. VERTICAL DATUM IS NAVD88 AND ORIGINATES FROM THE LOCAL C.O.R.S. NETWORK, UTILIZING THE GEOID09 MODEL