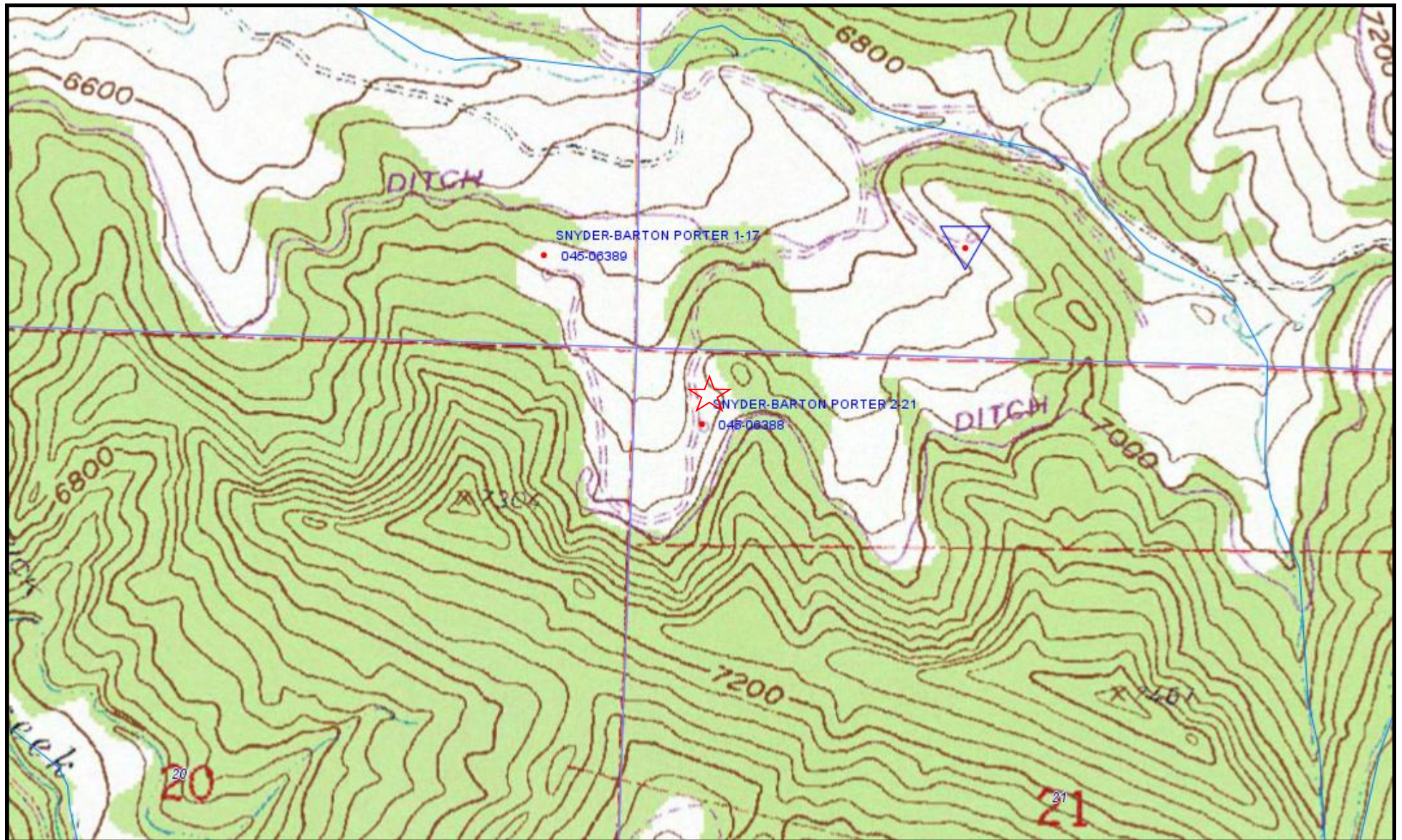


## Snyder-Barton-Porter 2-21 API# 045-06388



Topographic map.



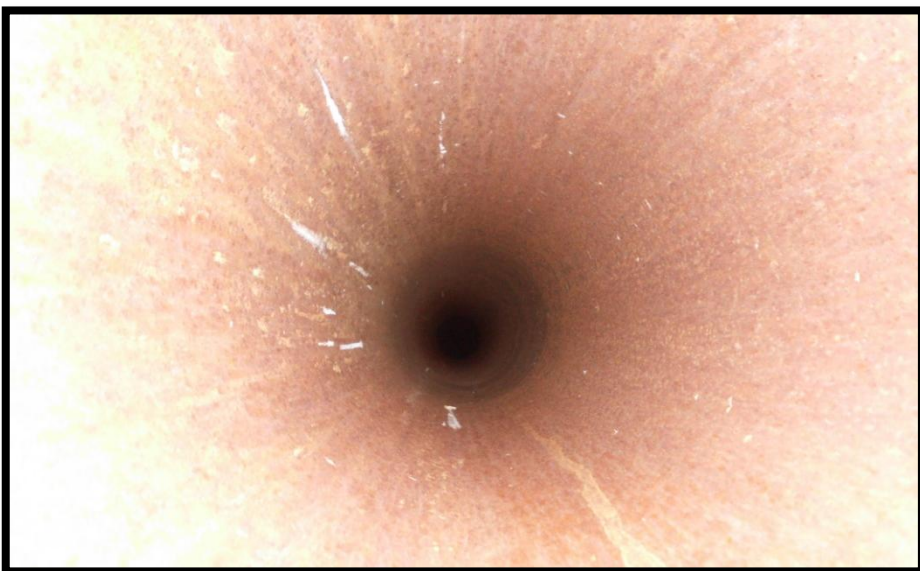
## Snyder-Barton-Porter 2-21 API# 045-06388



Viewing north. Well pad footprint, wellbore location, and cut and side slopes



Viewing north: open cased wellbore on location.



Snap-shot of wellbore casing interior.



Viewing south: Cut slope and well pad.



## Snyder-Barton-Porter 2-21 API# 045-06388



Viewing east: Gully erosion along cut slope.



Viewing southeast: Rill formation along cut slope.



Viewing northeast: fill slope and adjacent irrigated lands.



Viewing east: Large Gully wash that originated from top of fill slope.



## Snyder-Barton-Porter 2-21 API# 045-06388



Google Maps Aerial Photo Date: September 22, 2011. View showing existing access roads and locations of two other un-reclaimed areas, (045-06389 & 045-06350).



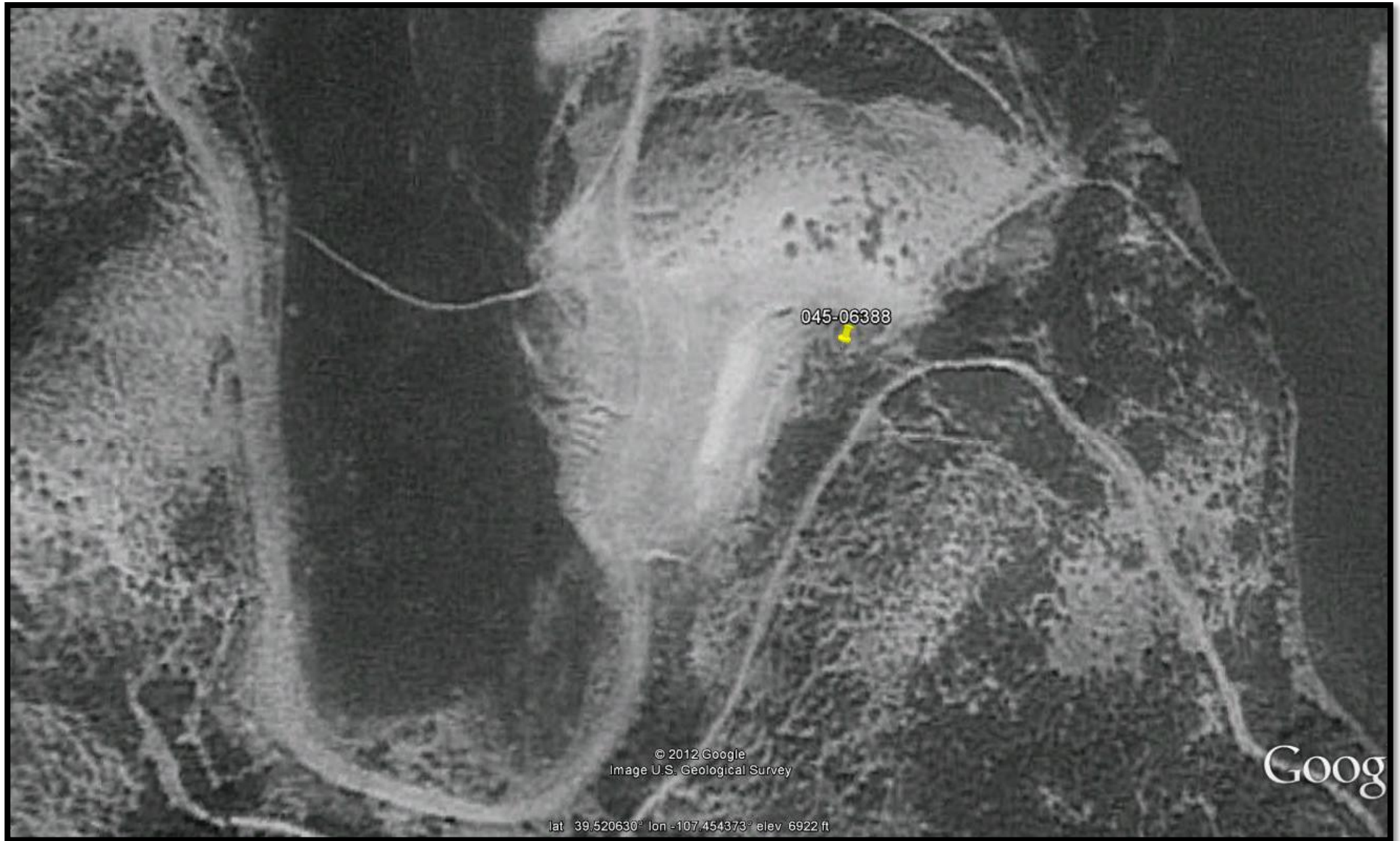
## Snyder-Barton-Porter 2-21 API# 045-06388



Google Maps Aerial Photo Date: September 22, 2011. Aerial view of the Snyder-Barton-Porter 2-21 location. Showing rills and gully on cut and fill slopes.



## Snyder-Barton-Porter 2-21 API# 045-06388



Google Maps Aerial Photo Date: September 02, 1993. Aerial view of Snyder Barton Porter 2-21 in 1993.