

---

**WILLIAMS PRODUCTION RMT INC - EBUS**

---

**KP 341-28  
MAMM CREEK  
Garfield County , Colorado**

**Cement Surface Casing**  
27-Oct-2011

**Job Site Documents**

*The Road to Excellence Starts with Safety*

<b>Sold To #:</b> 300721	<b>Ship To #:</b> 2884073	<b>Quote #:</b>	<b>Sales Order #:</b> 8542158
<b>Customer:</b> WILLIAMS PRODUCTION RMT INC - EBUS		<b>Customer Rep:</b> Duniho, Al	
<b>Well Name:</b> KP		<b>Well #:</b> 341-28	<b>API/UWI #:</b> 05-045-20693
<b>Field:</b> MAMM CREEK	<b>City (SAP):</b> PARACHUTE	<b>County/Parish:</b> Garfield	<b>State:</b> Colorado
<b>Lat:</b> N 39.506 deg. OR N 39 deg. 30 min. 20.084 secs.		<b>Long:</b> W 107.552 deg. OR W -108 deg. 26 min. 54.218 secs.	
<b>Contractor:</b> CYCLONE 30		<b>Rig/Platform Name/Num:</b> CYCLONE 30	
<b>Job Purpose:</b> Cement Surface Casing			
<b>Well Type:</b> Development Well		<b>Job Type:</b> Cement Surface Casing	
<b>Sales Person:</b> KOHL, KYLE		<b>Srvc Supervisor:</b> LEIST, JAMES	<b>MBU ID Emp #:</b> 362787

**Job Personnel**

HES Emp Name	Exp Hrs	Emp #	HES Emp Name	Exp Hrs	Emp #	HES Emp Name	Exp Hrs	Emp #
BLUST, CHARLES Thomas	3	386662	EICKHOFF, ROBERT Edward	3	495311	JENSEN, SHANE Lynn	3	441759
LEIST, JAMES R	3	362787						

**Equipment**

HES Unit #	Distance-1 way	HES Unit #	Distance-1 way	HES Unit #	Distance-1 way	HES Unit #	Distance-1 way
10011429	60 mile	10867304	60 mile	10998054	60 mile	11259882	60 mile
11560046	60 mile	11562538	60 mile				

**Job Hours**

Date	On Location Hours	Operating Hours	Date	On Location Hours	Operating Hours	Date	On Location Hours	Operating Hours
10-27-11	4	2						

**TOTAL** Total is the sum of each column separately

**Job**

**Job Times**

Formation Name	Formation Depth (MD)	Top	Bottom	Called Out	Date	Time	Time Zone
				27 - Oct - 2011	05:30	MST	
<b>Form Type</b>			<b>BHST</b>	<b>On Location</b>	27 - Oct - 2011	09:30	MST
<b>Job depth MD</b>	1370. ft		<b>Job Depth TVD</b>	1370. ft	<b>Job Started</b>	27 - Oct - 2011	12:41
<b>Water Depth</b>			<b>Wk Ht Above Floor</b>	4. ft	<b>Job Completed</b>	27 - Oct - 2011	13:34
<b>Perforation Depth (MD)</b>	<i>From</i>		<i>To</i>		<b>Departed Loc</b>	27 - Oct - 2011	15:00

**Well Data**

Description	New / Used	Max pressure psig	Size in	ID in	Weight lbm/ft	Thread	Grade	Top MD ft	Bottom MD ft	Top TVD ft	Bottom TVD ft
<b>Sales/Rental/3<sup>rd</sup> Party (HES)</b>											

Description	Qty	Qty uom	Depth	Supplier
PLUG,CMTG, TOP, 9 5/8, HW, 8.16 MIN/9.06 MA	1	EA		

**Tools and Accessories**

Type	Size	Qty	Make	Depth	Type	Size	Qty	Make	Depth	Type	Size	Qty	Make
Guide Shoe					Packer					Top Plug	9.625	1	
Float Shoe					Bridge Plug					Bottom Plug			
Float Collar					Retainer					SSR plug set			
Insert Float										Plug Container	9.625	1	
Stage Tool										Centralizers			

**Miscellaneous Materials**

Gelling Agt	Conc	Surfactant	Conc	Acid Type	Qty	Conc %
Treatment Fld	Conc	Inhibitor	Conc	Sand Type	Size	Qty

**Fluid Data**

Stage/Plug #: 1									
Fluid #	Stage Type	Fluid Name	Qty	Qty uom	Mixing Density lbm/gal	Yield ft <sup>3</sup> /sk	Mix Fluid Gal/sk	Rate bbl/min	Total Mix Fluid Gal/sk

Stage/Plug #: 1									
Fluid #	Stage Type	Fluid Name	Qty	Qty uom	Mixing Density lbm/gal	Yield ft <sup>3</sup> /sk	Mix Fluid Gal/sk	Rate bbl/min	Total Mix Fluid Gal/sk
1	Water Spacer		20.00	bbl	8.34	.0	.0	6	
2	Lead Cement	VERSACEM (TM) SYSTEM (452010)	200.0	sacks	12.3	2.38	13.75	8	13.75
3	Tail Cement	VERSACEM (TM) SYSTEM (452010)	160.0	sacks	12.8	2.11	11.75	8	11.75
4	Displacement Fluid		104.00	bbl	8.34	.0	.0	8	
Calculated Values		Pressures		Volumes					
Displacement	104	Shut In: Instant		Lost Returns	0	Cement Slurry	144.7	Pad	
Top Of Cement	SURFACE	5 Min		Cement Returns	25	Actual Displacement	104	Treatment	
Frac Gradient		15 Min		Spacers	20	Load and Breakdown		Total Job	268
Rates									
Circulating	14	Mixing	8	Displacement	8	Avg. Job	8		
Cement Left In Pipe	Amount	45 ft	Reason	Shoe Joint					
Frac Ring # 1 @	ID	Frac ring # 2 @	ID	Frac Ring # 3 @	ID	Frac Ring # 4 @	ID		
The Information Stated Herein Is Correct				Customer Representative Signature					

*The Road to Excellence Starts with Safety*

<b>Sold To #:</b> 300721	<b>Ship To #:</b> 2884073	<b>Quote #:</b>	<b>Sales Order #:</b> 8542158
<b>Customer:</b> WILLIAMS PRODUCTION RMT INC - EBUS		<b>Customer Rep:</b> Duniho, AI	
<b>Well Name:</b> KP	<b>Well #:</b> 341-28	<b>API/UWI #:</b> 05-045-20693	
<b>Field:</b> MAMM CREEK	<b>City (SAP):</b> PARACHUTE	<b>County/Parish:</b> Garfield	<b>State:</b> Colorado
<b>Legal Description:</b>			
<b>Lat:</b> N 39.506 deg. OR N 39 deg. 30 min. 20.084 secs.		<b>Long:</b> W 107.552 deg. OR W -108 deg. 26 min. 54.218 secs.	
<b>Contractor:</b> CYCLONE 30		<b>Rig/Platform Name/Num:</b> CYCLONE 30	
<b>Job Purpose:</b> Cement Surface Casing			<b>Ticket Amount:</b>
<b>Well Type:</b> Development Well		<b>Job Type:</b> Cement Surface Casing	
<b>Sales Person:</b> KOHL, KYLE		<b>Srvc Supervisor:</b> LEIST, JAMES	<b>MBU ID Emp #:</b> 362787

Activity Description	Date/Time	Cht #	Rate bbl/min	Volume bbl		Pressure psig		Comments
				Stage	Total	Tubing	Casing	
Call Out	10/27/2011 05:30							
Pre-Convoy Safety Meeting	10/27/2011 07:00							WITH ALL HES PERSONNEL
Arrive At Loc	10/27/2011 09:30							
Pre-Rig Up Safety Meeting	10/27/2011 10:00							WITH ALL ON HES PERSONNEL
Rig-Up Completed	10/27/2011 11:00							
Pre-Job Safety Meeting	10/27/2011 12:30							WITH ALL ON LOCATION PERSONNEL
Start Job	10/27/2011 12:41							TP 1370', SJ 45', OH 13.5", CSG 9.625" 32.3#, MUD 9.8 PPG, RIG CIRULATED FOR 30 MIN PRIOR TO CMT JOB AT 14 BPM, WITH563 PSI, PV-25, YP-17, PH-9, TEMP-82
Pressure Test	10/27/2011 12:42							2670 HIGH PRESSURE TEST, ALL LINES HELD PSI
Pump Spacer	10/27/2011 12:44		6	20			160.0	FRESH WATER
Pump Lead Cement	10/27/2011 12:49		8	84			310.0	200 SKS, 12.3 PPG, 2.38 FT3/SK, 13.75 GAL/SK
Pump Tail Cement	10/27/2011 13:02		8	60			320.0	160 SKS, 12.8 PPG, 2.11 FT3/SK, 11.75GAL/SK
Shutdown	10/27/2011 13:12							
Activity Description	Date/Time	Cht	Rate bbl/min	Volume bbl		Pressure psig		Comments

Sold To # : 300721

Ship To # :2884073

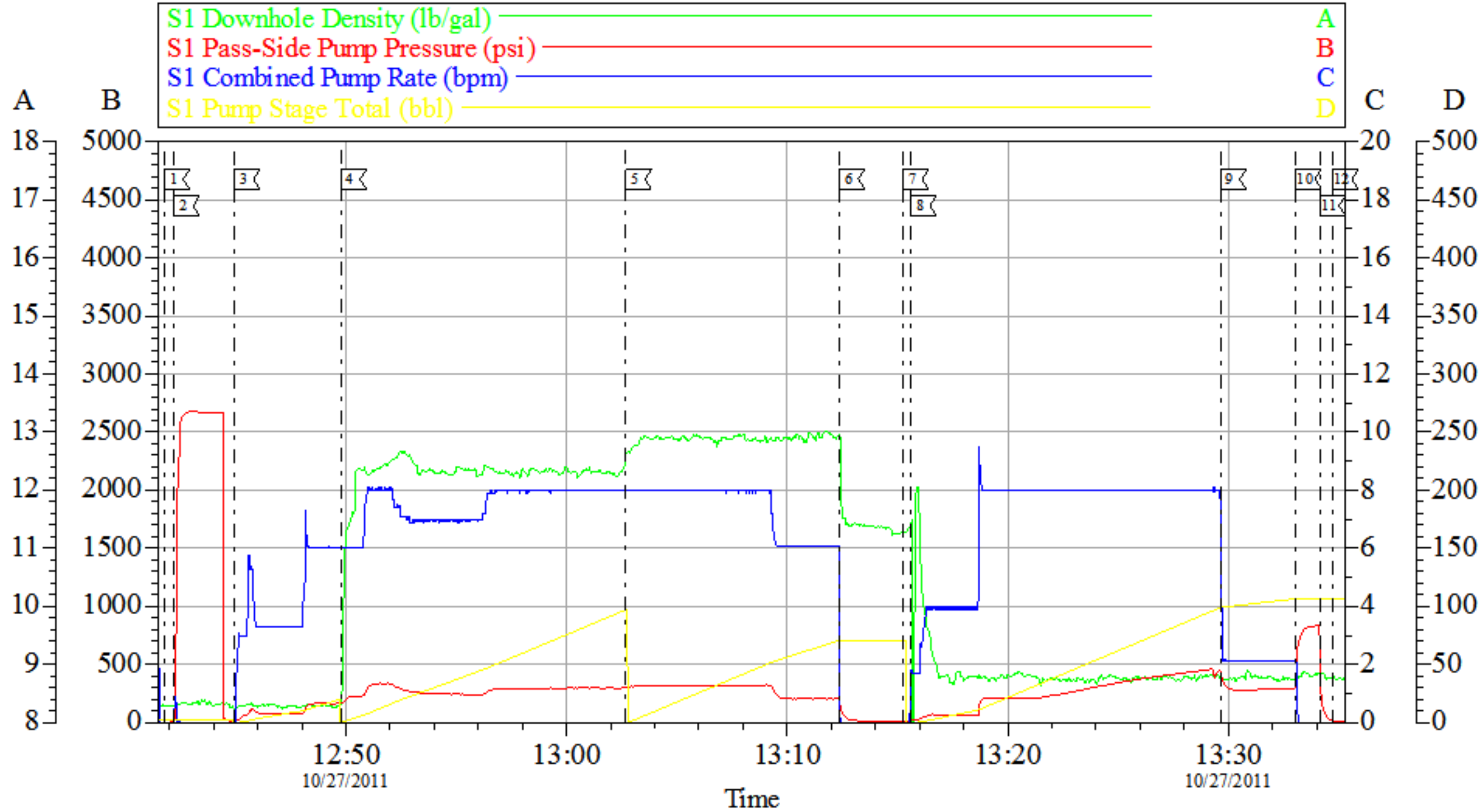
Quote # :

Sales Order # : 8542158

		#		Stage	Total	Tubing	Casing	
Drop Top Plug	10/27/2011 13:15							COMP. REP. VERIFIED PLUG WENT, WASH UP ON TOP OF PLUG
Pump Displacement	10/27/2011 13:15		8	104			455.0	FRESH WATER, 25 BBLs CMT TO SURFACE
Slow Rate	10/27/2011 13:29		2	94			280.0	TO BUMP PLUG
Bump Plug	10/27/2011 13:33		2	104			300.0	PLUG BUMPED
Check Floats	10/27/2011 13:34						833.0	FLOATS HELD
End Job	10/27/2011 13:34							
Pre-Rig Down Safety Meeting	10/27/2011 13:45							WITH ALL HES PERSONNEL
Rig-Down Completed	10/27/2011 15:00							
Pre-Convoy Safety Meeting	10/27/2011 15:15							WITH ALL HES PERSONNEL
Comment	10/27/2011 15:15							THANKYOU FOR USING HALLIBURTON CEMENT, JAMES LEIST AND CREW

# WILLIAMS PRODUCTION

## 9 5/8 SURFACE CASING

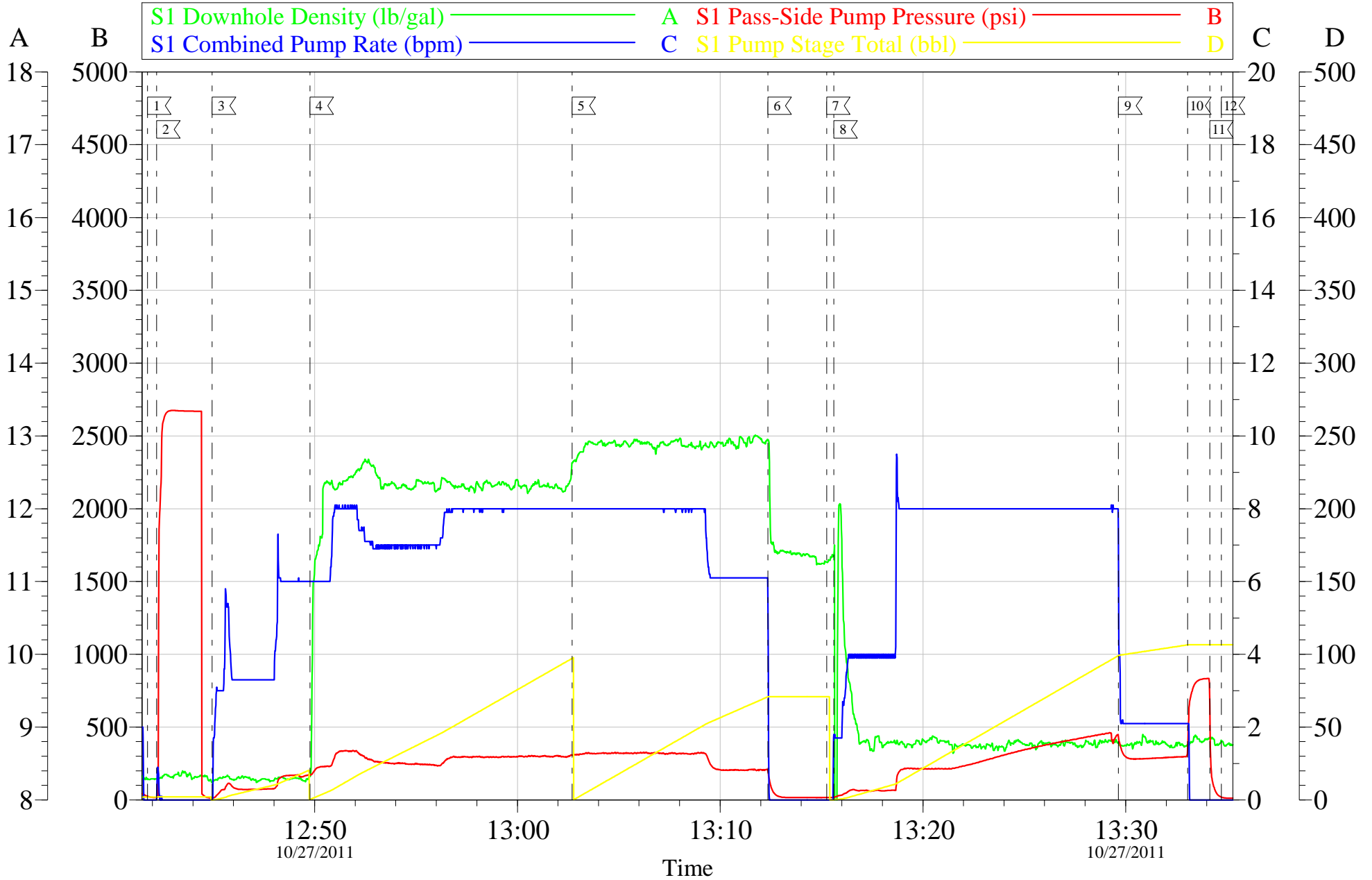


Local Event Log								
1	START JOB	12:41:46	2	PRESSURE TEST	12:42:12	3	PUMP H2O SPACER	12:44:57
4	PUMP LEAD CMT	12:49:46	5	PUMP TAIL CMT	13:02:41	6	SHUTDOWN	13:12:21
7	DROP TOP PLUG	13:15:15	8	PUMP DISPLACEMENT	13:15:36	9	SLOWRATE	13:29:39
10	BUMP PLUG	13:33:03	11	CHECK FLOATS	13:34:09	12	END JOB	13:34:43

Customer: WILLIAMS	Job Date: 27-Oct-2011	Sales Order #: 8542158
Well Description: KP 341-28	Job Type: SURFACE	ADC Used: YES
Company Rep: LARRY NICKOLS	Cement Supervisor: JAMES LEIST	Elite #5 SHANE JENSEN

# WILLIAMS PRODUCTION

## 9 5/8 SURFACE CASING



Customer: WILLIAMS  
 Well Description: KP 341-28  
 Company Rep: LARRY NICKOLS

Job Date: 27-Oct-2011  
 Job Type: SURFACE  
 Cement Supervisor: JAMES LEIST

Sales Order #: 8542158  
 ADC Used: YES  
 Elite #:5 SHANE JENSEN

OptiCem v6.4.9  
 27-Oct-11 13:50

<b>Sales Order #:</b> 8542158	<b>Line Item:</b> 10	<b>Survey Conducted Date:</b> 10/27/2011
<b>Customer:</b> WILLIAMS PRODUCTION RMT INC - EBUS		<b>Job Type (BOM):</b> CMT SURFACE CASING BOM
<b>Customer Representative:</b> LARRY NICKOLS		<b>API / UWI: (leave blank if unknown)</b> 05-045-20693
<b>Well Name:</b> KP		<b>Well Number:</b> 341-28
<b>Well Type:</b> Development Well	<b>Well Country:</b> United States of America	
<b>H2S Present:</b>	<b>Well State:</b> Colorado	<b>Well County:</b> Garfield

Dear Customer,

We hope that you were satisfied with the service quality of this job performed by Halliburton. It is the aim of our management and service personnel to deliver equipment and service of a standard unmatched in the service sector of the energy industry.

Please take the time to let us know if our performance met with your satisfaction. Please be as critical as possible to ensure we constantly improve our service. Your comments are of great value to us and are intended for the exclusive use of Halliburton.

### CUSTOMER SATISFACTION SURVEY

CATEGORY	CUSTOMER SATISFACTION RESPONSE	
Survey Conducted Date	The date the survey was conducted	10/27/2011
Survey Interviewer	The survey interviewer is the person who initiated the survey.	JAMES LEIST (HX18202)
Customer Participation	Did the customer participate in this survey? (Y/N)	Yes
Customer Representative	Enter the Customer representative name	LARRY NICKOLS
HSE	Was our HSE performance satisfactory? Circle Y or N	Yes
Equipment	Were you satisfied with our Equipment? Circle Y or N	Yes
Personnel	Were you satisfied with our people? Circle Y or N	Yes
Customer Comment	Customer's Comment	GREAT JOB THANKS
Job DVA	Did we provide job DVA above our normal service today? Circle Y or N	No
Time	Please enter hours in decimal format to nearest quarter hour.	
Other	Enter short text for other efficiencies gained.	
Customer Initials	Customer's Initials	
Please provide details	Please describe how the job efficiencies were gained.	

<b>CUSTOMER SIGNATURE</b>
---------------------------

<b>Sales Order #:</b> 8542158	<b>Line Item:</b> 10	<b>Survey Conducted Date:</b> 10/27/2011
<b>Customer:</b> WILLIAMS PRODUCTION RMT INC - EBUS		<b>Job Type (BOM):</b> CMT SURFACE CASING BOM
<b>Customer Representative:</b> LARRY NICKOLS		<b>API / UWI: (leave blank if unknown)</b> 05-045-20693
<b>Well Name:</b> KP		<b>Well Number:</b> 341-28
<b>Well Type:</b> Development Well	<b>Well Country:</b> United States of America	
<b>H2S Present:</b>	<b>Well State:</b> Colorado	<b>Well County:</b> Garfield

### KEY PERFORMANCE INDICATORS

General	
<b>Survey Conducted Date</b>	10/27/2011
The date the survey was conducted	

Cementing KPI Survey	
<b>Type of Job</b>	0
Select the type of job. (Cementing or Non-Cementing)	
<b>Select the Maximum Deviation range for this Job</b>	Deviated
What is the highest deviation for the job you just completed? This may not be the maximum well deviation.	
<b>Total Operating Time (hours)</b>	3
Total Operating Hours Including Rig-up, Pumping, Rig-down. Enter in decimal format.	
<b>HSE Incident, Accident, Injury</b>	No
HSE Incident, Accident, Injury. This should be recordable incidents only.	
<b>Was the job purpose achieved?</b>	Yes
Was the job delivered correctly as per customer agreed design?	
<b>Operating Hours (Pumping Hours)</b>	2
Total number of hours pumping fluid on this job. Enter in decimal format.	
<b>Customer Non-Productive Rig Time (hrs)</b>	0
Lost time due to Halliburton in the start, execution, or completion of an ordered service or product, or delays in a follow-on service. Enter in decimal format. 0 if none.	
<b>Type of Rig Classification Job Was Performed</b>	Drilling Rig (Portable)
Type Of Rig (classification) Job Was Performed On	
<b>Number Of JSAs Performed</b>	4
Number Of Jsas Performed	
<b>Number of Unplanned Shutdowns</b>	0
Unplanned shutdown is when injection stops for any period of time.	
<b>Was this a Primary Cement Job (Yes / No)</b>	Yes

<b>Sales Order #:</b> 8542158	<b>Line Item:</b> 10	<b>Survey Conducted Date:</b> 10/27/2011
<b>Customer:</b> WILLIAMS PRODUCTION RMT INC - EBUS		<b>Job Type (BOM):</b> CMT SURFACE CASING BOM
<b>Customer Representative:</b> LARRY NICKOLS		<b>API / UWI: (leave blank if unknown)</b> 05-045-20693
<b>Well Name:</b> KP		<b>Well Number:</b> 341-28
<b>Well Type:</b> Development Well	<b>Well Country:</b> United States of America	
<b>H2S Present:</b>	<b>Well State:</b> Colorado	<b>Well County:</b> Garfield

Primary Cement Job= Casing job, Liner job, or Tie-back job.	
<b>Did We Run Wiper Plugs?</b> Did We Run Top And Bottom Casing Wiper Plugs?	Top
<b>Mixing Density of Job Stayed in Designed Density Range (0-100%)</b> Density Range defined as +/- .20 ppg. Calculation: Total BBLs cement mixed at designed density divided by total BBLs of cement multiplied by 100	99
<b>Was Automated Density Control Used?</b> Was Automated Density Control (ADC) Used ?	Yes
<b>Pump Rate (percent) of Job Stayed At Designed Pump Rate</b> Pump Rate range defined as +/- 1bbl/min. Calculation: Total BBLs of fluid pumped at the designed rate divided by Total BBLs of fluid pumped, multiplied by 100	98
<b>Nbr of Remedial Sqz Jobs Rqd - Competition</b> Number Of Remedial Squeeze Jobs Required After Primary Job Performed By Competition	0
<b>Nbr of Remedial Plug Jobs Rqd - HES</b> Number Of Remedial Plug Jobs Needed After Primary Plug Pumped By HES	0
<b>Nbr of Remedial Sqz Jobs Rqd - HES</b> Number Of Remedial Squeeze Jobs Required After Primary Job Performed By HES	0