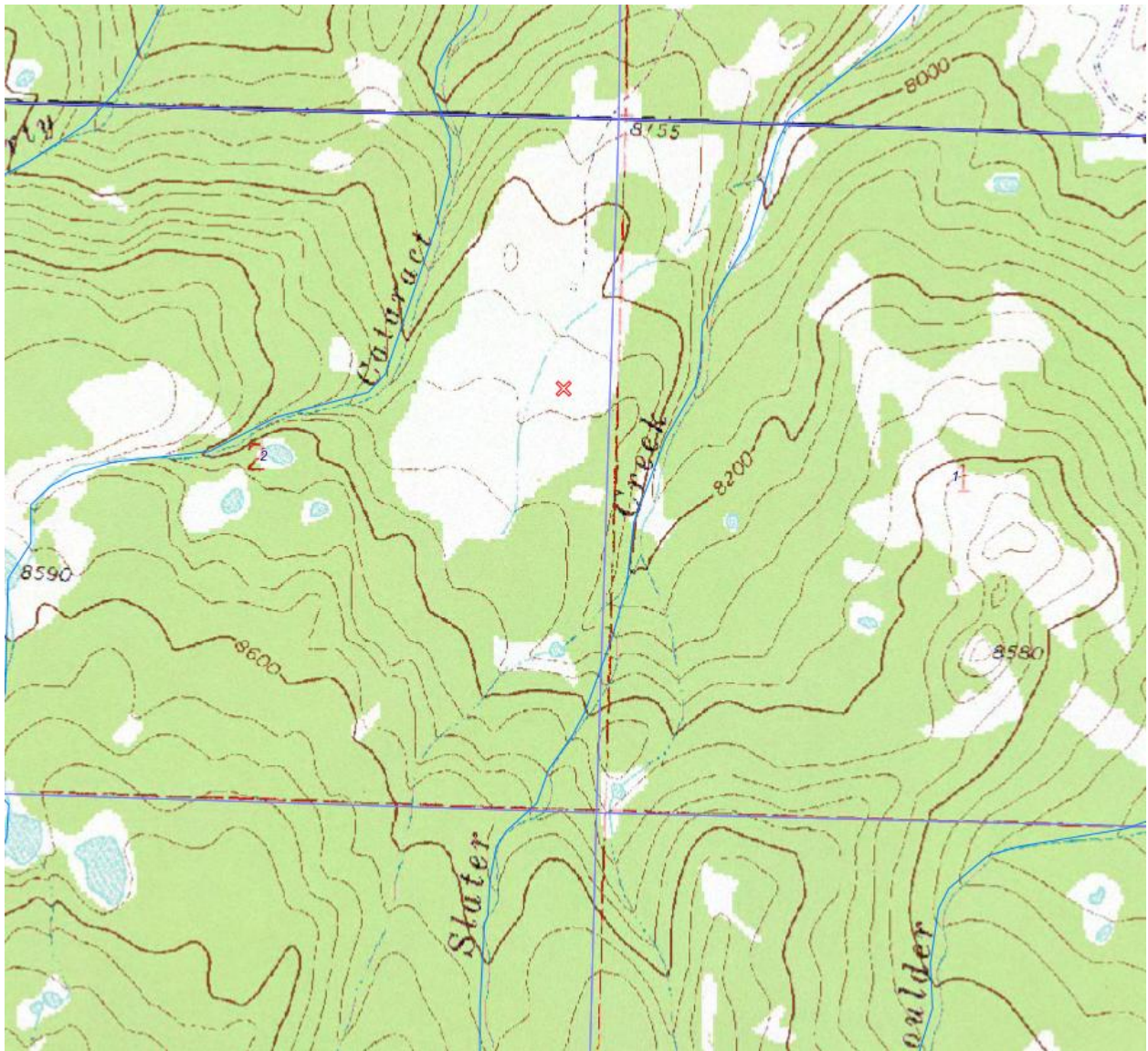


## Hydrology Map



Proposed well location: red "X".

Distance and bearing from planned well location to Cataract Creek: 900 feet; 282°.

Distance and bearing from planned well location to Roaring Fork of Slater Creek: 240 feet; 115°.

Distance and bearing from planned well location to ephemeral unnamed tributary of Roaring Fork of Slater Creek: 240 feet; 285°.