

## Form 2A Additional Comments

### 1. Consultation – restricted surface occupancy area and other wildlife.

**Cutthroat Trout** – As shown on the attached surface water map (Figure 1), there are two creeks in the general vicinity of the proposed well location (shown as a red "X" on the attached maps, all printed from the COGCC GIS Online site), both of which are tributaries of Slater Creek. Cataract Creek is approximately 1,300 feet west of the planned well location and flows to the north-northeast. The Roaring Fork of Slater Creek is approximately 900 feet east of the planned well location and also flows north-northeast. The USGS topographic map also shows a small unnamed intermittent tributary of the Roaring Fork approximately 240 feet west of the planned well location. The unnamed tributary flows north and joins the Roaring Fork northeast of the planned well location.

As shown on Figure 2, the planned well location is outside the riparian buffer zone of both Cataract Creek and the Roaring Fork. There is no riparian buffer on the unnamed tributary of the Roaring Fork.

The **Cutthroat Trout RSO** map (Figure 3), however, includes not only Cataract Creek and the Roaring Fork but also the unnamed tributary of the Roaring Fork. The planned well location lies just inside the mapped Cutthroat Trout RSO zone of the unnamed tributary of the Roaring Fork.

Field investigations conducted on June 14, 2012 and interviews with local ranchers indicate that the unnamed tributary of the Roaring Fork is not suitable habitat for cutthroat trout. The tributary is not an intermittent stream but, rather, an ephemeral stream and irrigation ditch. Flows are present only after storm events and for a brief time in early summer when irrigation water is released from an upstream gate on the Roaring Fork and diverted through the unnamed tributary to hayfields below the property. Irrigation was taking place during the June 14, 2012 site visit, and it was obvious that the unnamed tributary lacks a perennial flow. Grasses and forbs were growing in the streambed, and there was a complete lack of macroinvertebrates on rocks in the water. Given the normal lack of water in the tributary and the absence of primary food organisms, the tributary appears incapable of supporting cutthroat trout in any season.

It should also be noted that diversion of irrigation water from the Roaring Fork above the property all but eliminates flow in the Roaring Fork in the vicinity of the planned well location, greatly diminishing the suitability of the Roaring Fork as habitat for cutthroat trout.

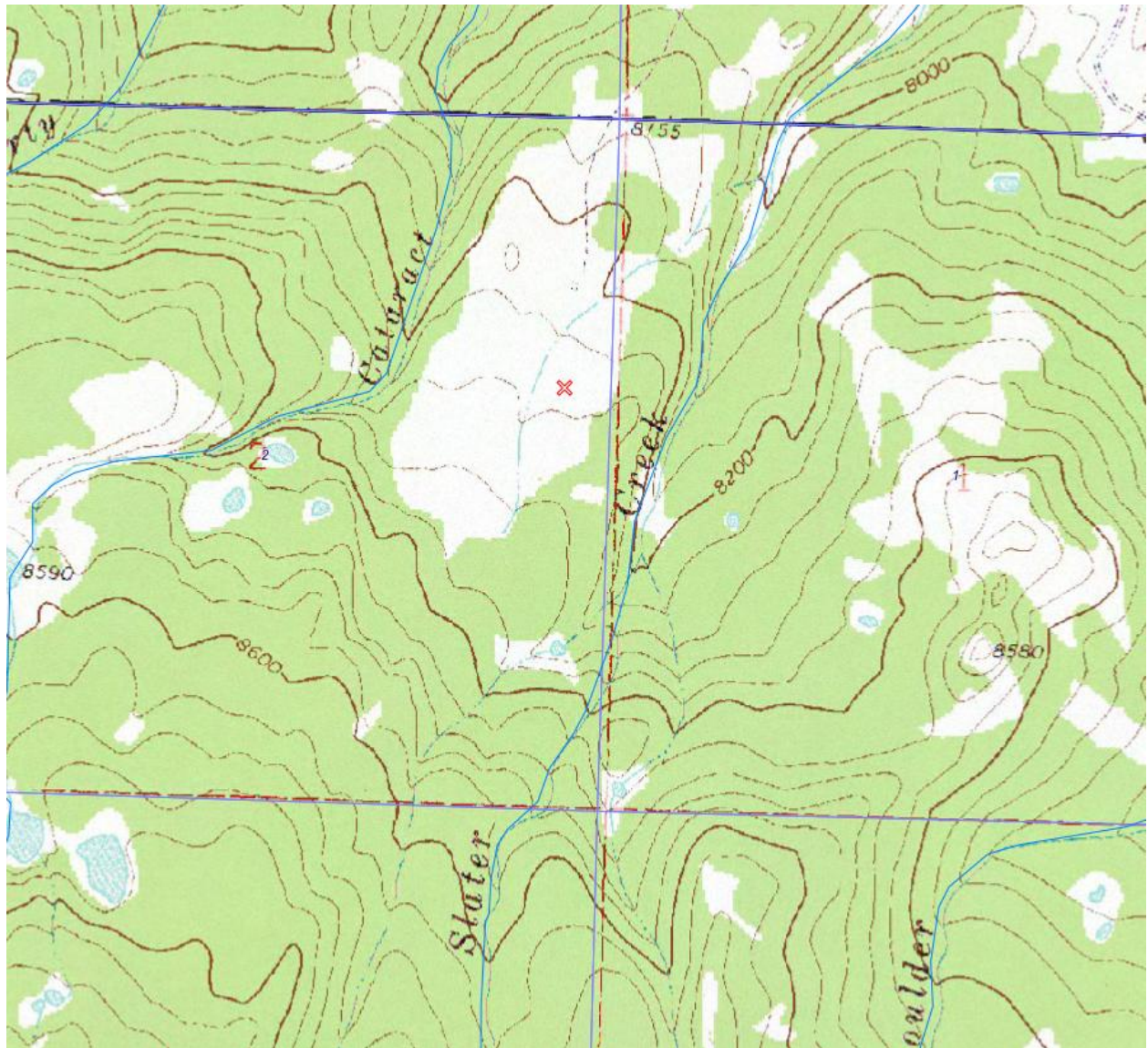
Despite the lack of suitable cutthroat trout habitat in the vicinity of the planned well location, PRM will be diligent in its protection of the streams and will implement and maintain BMPs to control stormwater runoff in a manner that minimizes erosion, transport of sediment offsite, and site degradation.

**Black Bear** – According to maps in COGCC GIS Online, the location is in black bear habitat. Accordingly, PRM will insure that all edible refuse is stored or disposed in bear-proof containers.

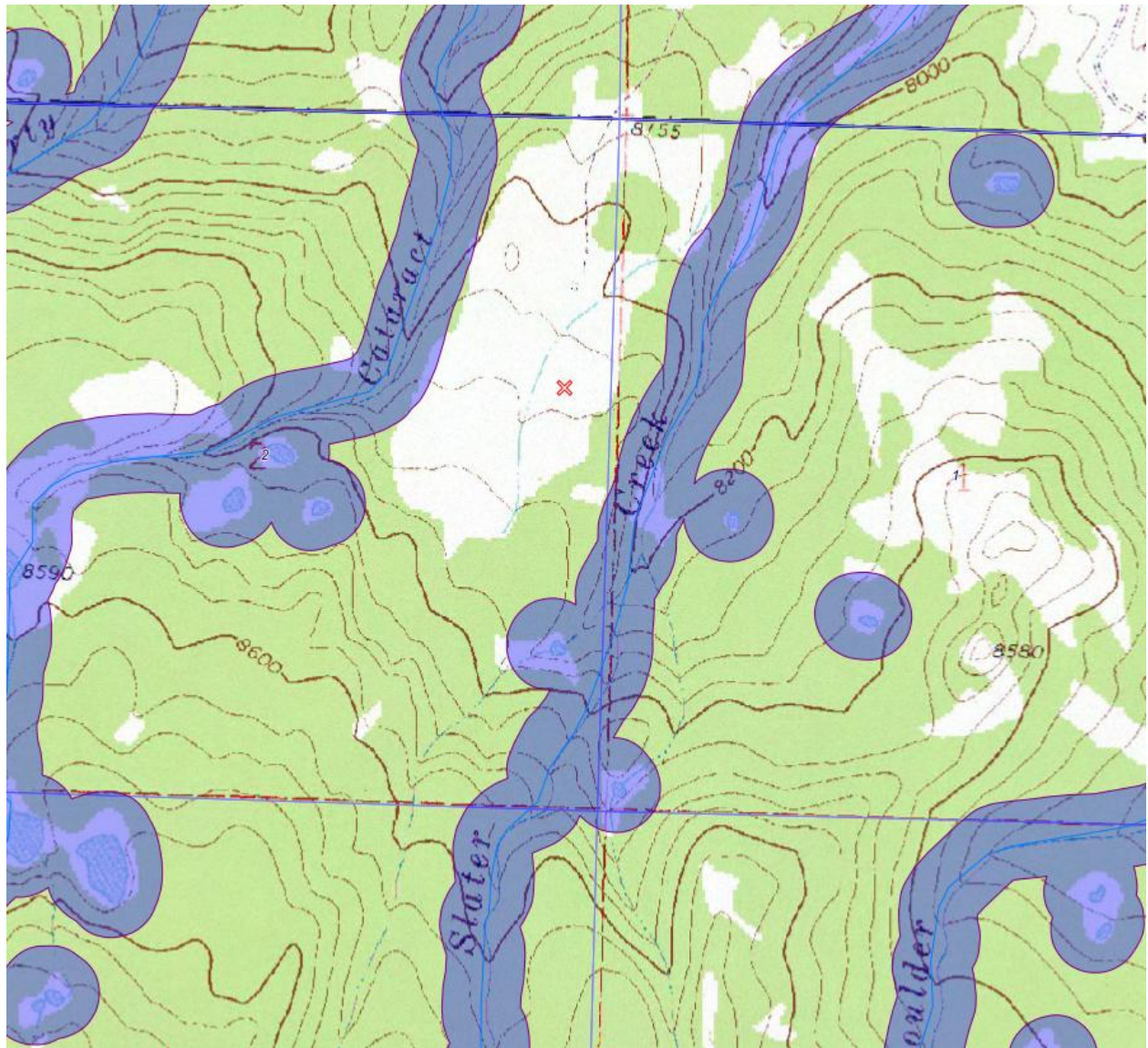
#### **14. Water Resources – Distance to nearest surface area.**

Because the unnamed tributary to the Roaring Fork is an ephemeral stream normally lacking flowing water, the distance to surface water shown in Item 14 is the distance to the Roaring Fork. There does not appear to be any nearby water wells, and the depth to ground water is unknown.

**Figure 1. Surface Water**



**Figure 2. Riparian Buffer**



**Figure 3. Cutthroat Trout RSO**

