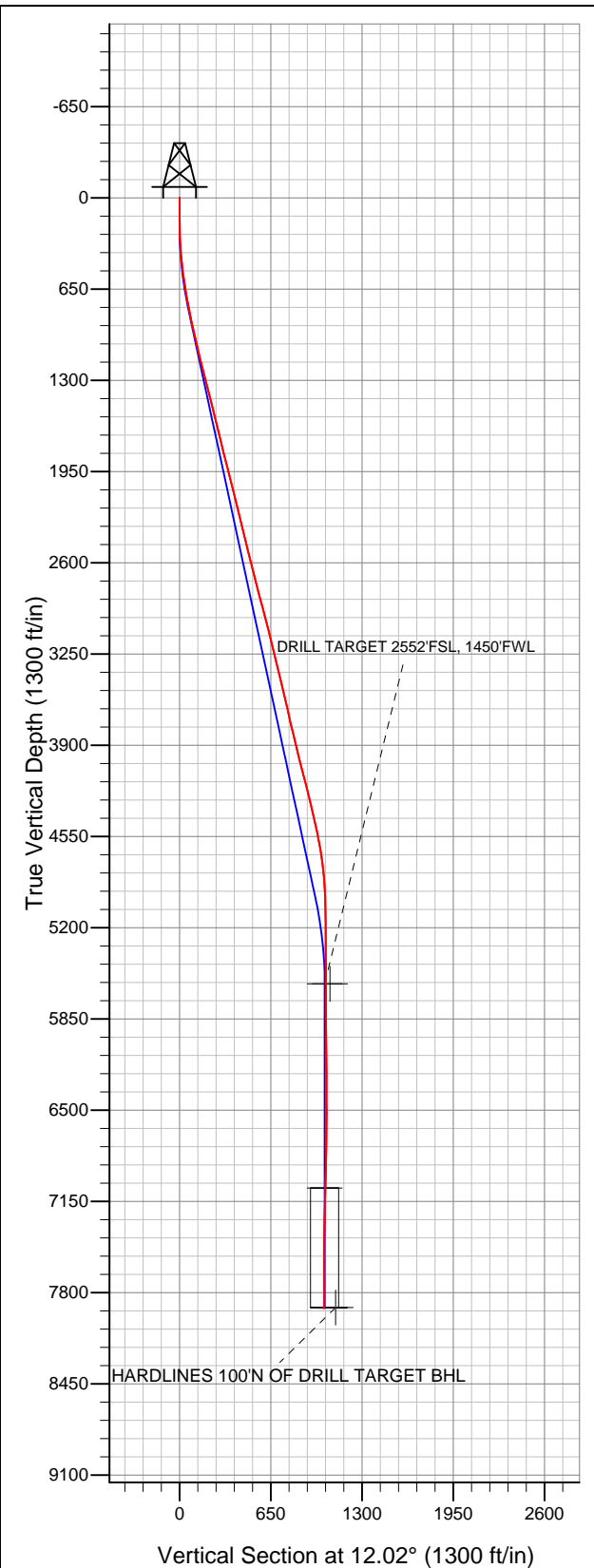


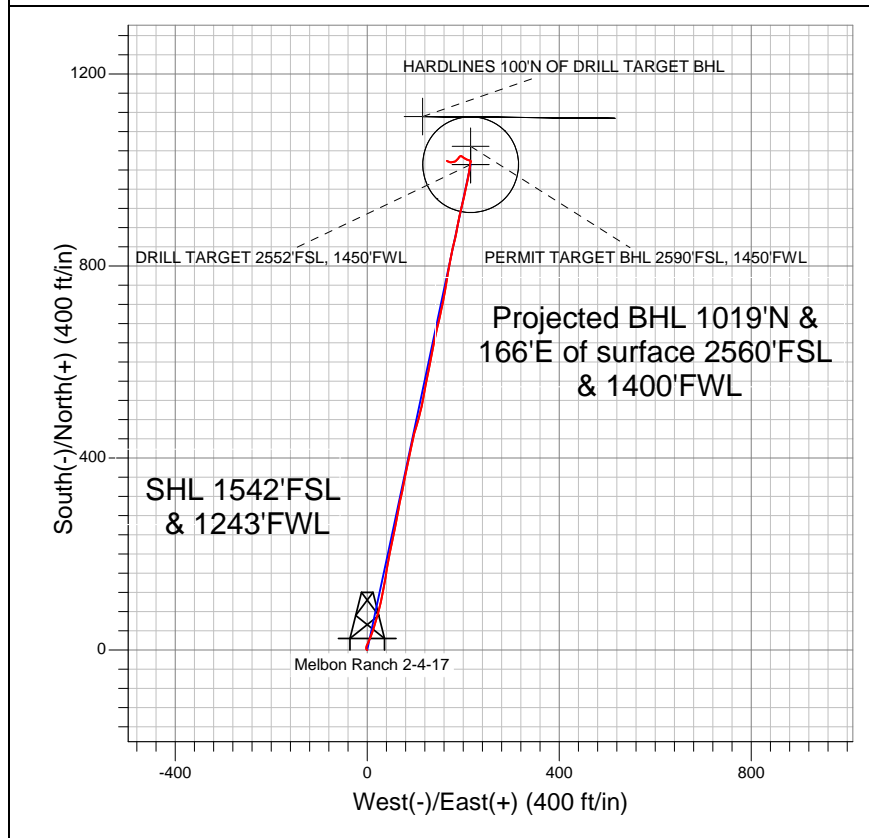
Well Name: Melbon Ranch 2-4-17

Surface Location: Melbon Ranch 2-4-17 Pad Sec.17-T2N-R65W
 North American Datum 1983 US State Plane 1983 Colorado Northern Zone
 Ground Elevation: 4940.0

+N/-S	+E/-W	Northing	Easting	Latitude	Longitude	Slot
0.0	0.0	1293284.19	3225650.74	40.135640	-104.692930	
Original Well Elev			WELL @ 4952.0ft (Original Well Elev)			



EnCana Oil & Gas Weld County CO



LEGEND

- Wellbore #1
- Melbon Ranch 2-4-17, Wellbore #1, Plan #1 (3-28-12) V0
- Survey #1

Final Survey Plot

Projected Final Survey -
 8032'MD & 7912'TVD @ 1031'VS
 1.20 deg Inc 292.40 deg AZ

Project: SEC.17-T2N-R65W
 Site: Melbon Ranch 2-4-17 Pad Sec.17-T2N-R65W
 Well: Melbon Ranch 2-4-17
 Plan: Wellbore #1



EnCana Oil & Gas Weld County CO

SEC.17-T2N-R65W

Melbon Ranch 2-4-17 Pad Sec.17-T2N-R65W

Melbon Ranch 2-4-17

Wellbore #1

Survey: Survey #1

Standard Survey Report

19 April, 2012

Company:	EnCana Oil & Gas Weld County CO	Local Co-ordinate Reference:	Well Melbon Ranch 2-4-17
Project:	SEC.17-T2N-R65W	TVD Reference:	WELL @ 4952.0ft (Original Well Elev)
Site:	Melbon Ranch 2-4-17 Pad Sec.17-T2N-R65W	MD Reference:	WELL @ 4952.0ft (Original Well Elev)
Well:	Melbon Ranch 2-4-17	North Reference:	True
Wellbore:	Wellbore #1	Survey Calculation Method:	Minimum Curvature
Design:	Wellbore #1	Database:	Landmark

Project	SEC.17-T2N-R65W, Weld County, Colorado		
Map System:	US State Plane 1983	System Datum:	Mean Sea Level
Geo Datum:	North American Datum 1983		Using Well Reference Point
Map Zone:	Colorado Northern Zone		Using geodetic scale factor

Site		Melbon Ranch 2-4-17 Pad Sec.17-T2N-R65W			
Site Position:		Northing:	1,293,284.19ft	Latitude:	40.135640
From:	Lat/Long	Easting:	3,225,650.74ft	Longitude:	-104.692930
Position Uncertainty:	0.0 ft	Slot Radius:	"	Grid Convergence:	0.52 °

Well	Melbon Ranch 2-4-17				
Well Position	+N/-S	0.0 ft	Northing:	1,293,284.19 ft	Latitude: 40.135640
	+E/-W	0.0 ft	Easting:	3,225,650.74 ft	Longitude: -104.692930
Position Uncertainty		0.0 ft	Wellhead Elevation:	ft	Ground Level: 4,940.0 ft

Wellbore	Wellbore #1				
Magnetics	Model Name	Sample Date	Declination (°)	Dip Angle (°)	Field Strength (nT)
	IGRF2010	4/4/2012	8.69	66.82	52,914

Design	Wellbore #1				
Audit Notes:					
Version:	1.0	Phase:	ACTUAL	Tie On Depth:	0.0
Vertical Section:	Depth From (TVD) (ft)	+N/-S (ft)	+E/-W (ft)	Direction (°)	
	5,600.0	0.0	0.0	12.02	

Survey Program		Date	4/19/2012		
From (ft)	To (ft)	Survey (Wellbore)	Tool Name	Description	
89.0	8,032.0	Survey #1 (Wellbore #1)	MWD	MWD - Standard	

Survey	Wellbore Data									
	Measured Depth (ft)	Inclination (°)	Azimuth (°)	Vertical Depth (ft)	+N/-S (ft)	+E/-W (ft)	Vertical Section (ft)	Dogleg Rate (°/100ft)	Build Rate (°/100ft)	Turn Rate (°/100ft)
Main Survey	0.0	0.00	0.00	0.0	0.0	0.0	0.0	0.00	0.00	0.00
	89.0	0.90	306.10	89.0	0.4	-0.6	0.3	1.01	1.01	0.00
	181.0	1.00	317.90	181.0	1.4	-1.7	1.1	0.24	0.11	12.83
	273.0	1.70	358.30	273.0	3.4	-2.3	2.8	1.24	0.76	43.91
	364.0	3.30	15.50	363.9	7.3	-1.6	6.8	1.92	1.76	18.90
	456.0	5.90	24.00	455.6	14.1	1.0	14.0	2.91	2.83	9.24
	548.0	7.80	22.60	546.9	24.2	5.3	24.8	2.07	2.07	-1.52
	639.0	9.60	19.60	636.9	37.1	10.3	38.4	2.04	1.98	-3.30
	733.0	11.00	17.70	729.3	53.0	15.6	55.1	1.53	1.49	-2.02
	826.0	12.10	14.70	820.5	70.9	20.8	73.7	1.35	1.18	-3.23
	924.0	11.90	14.50	916.3	90.6	25.9	94.0	0.21	-0.20	-0.20
	1,017.0	12.50	10.60	1,007.2	109.8	30.2	113.7	1.10	0.65	-4.19
	1,111.0	13.60	10.80	1,098.8	130.6	34.1	134.9	1.17	1.17	0.21

Company:	EnCana Oil & Gas Weld County CO	Local Co-ordinate Reference:	Well Melbon Ranch 2-4-17
Project:	SEC.17-T2N-R65W	TVD Reference:	WELL @ 4952.0ft (Original Well Elev)
Site:	Melbon Ranch 2-4-17 Pad Sec.17-T2N-R65W	MD Reference:	WELL @ 4952.0ft (Original Well Elev)
Well:	Melbon Ranch 2-4-17	North Reference:	True
Wellbore:	Wellbore #1	Survey Calculation Method:	Minimum Curvature
Design:	Wellbore #1	Database:	Landmark

Survey										
Measured Depth (ft)	Inclination (°)	Azimuth (°)	Vertical Depth (ft)	+N/-S (ft)	+E/-W (ft)	Vertical Section (ft)	Dogleg Rate (°/100ft)	Build Rate (°/100ft)	Turn Rate (°/100ft)	
1,205.0	13.80	10.30	1,190.1	152.5	38.2	157.1	0.25	0.21	-0.53	
1,298.0	13.90	9.60	1,280.4	174.4	42.0	179.4	0.21	0.11	-0.75	
1,392.0	14.50	9.70	1,371.5	197.2	45.9	202.4	0.64	0.64	0.11	
1,485.0	14.30	12.20	1,461.6	219.9	50.3	225.5	0.70	-0.22	2.69	
1,579.0	14.20	12.00	1,552.7	242.5	55.2	248.7	0.12	-0.11	-0.21	
1,673.0	14.00	11.00	1,643.9	264.9	59.7	271.6	0.34	-0.21	-1.06	
1,766.0	13.70	10.60	1,734.2	286.8	63.9	293.8	0.34	-0.32	-0.43	
1,860.0	14.00	10.80	1,825.5	308.9	68.1	316.3	0.32	0.32	0.21	
1,954.0	13.70	12.20	1,916.7	331.0	72.6	338.8	0.48	-0.32	1.49	
2,047.0	14.40	11.20	2,006.9	353.1	77.1	361.4	0.80	0.75	-1.08	
2,141.0	14.30	11.20	2,098.0	375.9	81.7	384.7	0.11	-0.11	0.00	
2,235.0	14.20	12.20	2,189.1	398.6	86.3	407.8	0.28	-0.11	1.06	
2,328.0	13.50	11.70	2,279.4	420.4	91.0	430.1	0.76	-0.75	-0.54	
2,422.0	13.00	12.70	2,370.9	441.4	95.5	451.6	0.59	-0.53	1.06	
2,516.0	14.00	16.50	2,462.3	462.6	101.1	473.5	1.42	1.06	4.04	
2,609.0	14.30	16.30	2,552.5	484.5	107.5	496.2	0.33	0.32	-0.22	
2,703.0	14.60	10.60	2,643.5	507.2	112.9	519.6	1.55	0.32	-6.06	
2,797.0	14.20	11.30	2,734.6	530.2	117.4	543.0	0.46	-0.43	0.74	
2,890.0	14.20	10.60	2,824.7	552.6	121.7	565.8	0.18	0.00	-0.75	
2,984.0	15.00	12.40	2,915.7	575.8	126.4	589.5	0.98	0.85	1.91	
3,078.0	15.30	10.30	3,006.4	599.9	131.2	614.1	0.67	0.32	-2.23	
3,171.0	14.50	10.60	3,096.3	623.4	135.6	638.0	0.86	-0.86	0.32	
3,265.0	13.50	11.50	3,187.5	645.7	139.9	660.7	1.09	-1.06	0.96	
3,359.0	13.10	13.10	3,279.0	666.9	144.5	682.3	0.58	-0.43	1.70	
3,452.0	13.20	14.00	3,369.5	687.4	149.5	703.5	0.25	0.11	0.97	
3,546.0	14.30	11.50	3,460.8	709.2	154.4	725.8	1.33	1.17	-2.66	
3,640.0	13.40	11.00	3,552.1	731.3	158.8	748.3	0.97	-0.96	-0.53	
3,733.0	12.10	9.70	3,642.8	751.5	162.5	768.8	1.43	-1.40	-1.40	
3,827.0	13.00	9.20	3,734.6	771.6	165.8	789.2	0.96	0.96	-0.53	
3,921.0	13.90	9.40	3,826.0	793.2	169.4	811.1	0.96	0.96	0.21	
4,014.0	13.50	11.20	3,916.3	814.9	173.3	833.1	0.63	-0.43	1.94	
4,108.0	14.20	13.30	4,007.6	836.8	178.1	855.6	0.92	0.74	2.23	
4,202.0	14.90	12.60	4,098.6	859.9	183.4	879.2	0.77	0.74	-0.74	
4,295.0	14.20	9.70	4,188.6	882.8	187.9	902.6	1.09	-0.75	-3.12	
4,389.0	13.30	12.70	4,279.9	904.7	192.2	924.9	1.22	-0.96	3.19	
4,483.0	12.90	13.10	4,371.5	925.5	197.0	946.2	0.44	-0.43	0.43	
4,576.0	12.90	13.30	4,462.1	945.7	201.7	966.9	0.05	0.00	0.22	
4,670.0	11.30	11.90	4,554.0	964.9	206.0	986.6	1.73	-1.70	-1.49	
4,764.0	9.60	10.30	4,646.5	981.6	209.3	1,003.7	1.83	-1.81	-1.70	
4,857.0	7.20	11.20	4,738.5	995.0	211.9	1,017.3	2.58	-2.58	0.97	
4,951.0	5.50	5.00	4,831.9	1,005.2	213.4	1,027.6	1.95	-1.81	-6.60	
5,045.0	3.30	9.40	4,925.6	1,012.4	214.2	1,034.8	2.37	-2.34	4.68	
5,138.0	1.10	14.50	5,018.5	1,015.9	214.9	1,038.4	2.37	-2.37	5.48	
5,232.0	1.00	35.80	5,112.5	1,017.4	215.6	1,040.0	0.43	-0.11	22.66	
5,326.0	0.60	285.90	5,206.5	1,018.2	215.6	1,040.8	1.41	-0.43	-116.92	
5,419.0	0.80	309.30	5,299.5	1,018.8	214.6	1,041.1	0.37	0.22	25.16	
5,513.0	1.10	295.20	5,393.5	1,019.6	213.3	1,041.6	0.40	0.32	-15.00	
5,607.0	1.10	291.00	5,487.5	1,020.3	211.7	1,042.0	0.09	0.00	-4.47	
5,700.0	1.10	298.20	5,580.5	1,021.0	210.0	1,042.4	0.15	0.00	7.74	
5,719.4	1.11	294.34	5,599.8	1,021.2	209.7	1,042.5	0.39	0.06	-19.91	
DRILL TARGET 2552'FSL, 1450'FWL										
5,719.6	1.11	294.29	5,600.1	1,021.2	209.7	1,042.5	0.39	0.07	-19.69	
PERMIT TARGET BHL 2590'FSL, 1450'FWL										
5,794.0	1.20	280.60	5,674.4	1,021.6	208.3	1,042.6	0.39	0.12	-18.41	

Company:	EnCana Oil & Gas Weld County CO	Local Co-ordinate Reference:	Well Melbon Ranch 2-4-17
Project:	SEC.17-T2N-R65W	TVD Reference:	WELL @ 4952.0ft (Original Well Elev)
Site:	Melbon Ranch 2-4-17 Pad Sec.17-T2N-R65W	MD Reference:	WELL @ 4952.0ft (Original Well Elev)
Well:	Melbon Ranch 2-4-17	North Reference:	True
Wellbore:	Wellbore #1	Survey Calculation Method:	Minimum Curvature
Design:	Wellbore #1	Database:	Landmark

Survey									
Measured Depth (ft)	Inclination (°)	Azimuth (°)	Vertical Depth (ft)	+N/-S (ft)	+E/-W (ft)	Vertical Section (ft)	Dogleg Rate (°/100ft)	Build Rate (°/100ft)	Turn Rate (°/100ft)
5,888.0	1.10	300.00	5,768.4	1,022.3	206.5	1,042.9	0.43	-0.11	20.64
5,981.0	1.40	289.10	5,861.4	1,023.1	204.7	1,043.3	0.41	0.32	-11.72
6,075.0	1.10	297.30	5,955.4	1,023.9	202.8	1,043.7	0.37	-0.32	8.72
6,168.0	1.20	315.10	6,048.4	1,025.0	201.3	1,044.4	0.40	0.11	19.14
6,262.0	1.80	312.10	6,142.3	1,026.7	199.5	1,045.7	0.64	0.64	-3.19
6,356.0	0.40	299.40	6,236.3	1,027.8	198.1	1,046.5	1.50	-1.49	-13.51
6,450.0	0.40	295.00	6,330.3	1,028.1	197.6	1,046.7	0.03	0.00	-4.68
6,544.0	0.90	294.30	6,424.3	1,028.6	196.6	1,046.9	0.53	0.53	-0.74
6,639.0	0.50	275.20	6,519.3	1,028.9	195.5	1,047.1	0.48	-0.42	-20.11
6,733.0	1.00	261.80	6,613.3	1,028.8	194.3	1,046.7	0.56	0.53	-14.26
6,827.0	0.60	223.30	6,707.3	1,028.3	193.1	1,046.0	0.69	-0.43	-40.96
6,922.0	0.90	234.60	6,802.3	1,027.5	192.2	1,045.0	0.35	0.32	11.89
7,016.0	1.70	215.90	6,896.2	1,026.0	190.8	1,043.2	0.95	0.85	-19.89
7,110.0	2.60	217.30	6,990.2	1,023.2	188.6	1,040.0	0.96	0.96	1.49
7,174.4	2.24	227.63	7,054.5	1,021.2	186.8	1,037.7	0.88	-0.56	16.05
TARGET CIRCLE 2552'FSL & 1450'FWL									
7,204.0	2.10	233.50	7,084.1	1,020.4	186.0	1,036.8	0.88	-0.46	19.80
7,299.0	1.30	226.70	7,179.1	1,018.7	183.8	1,034.6	0.87	-0.84	-7.16
7,393.0	1.60	250.20	7,273.0	1,017.5	181.8	1,033.0	0.70	0.32	25.00
7,487.0	1.40	259.40	7,367.0	1,016.8	179.4	1,031.9	0.33	-0.21	9.79
7,582.0	1.50	256.40	7,462.0	1,016.3	177.1	1,030.9	0.13	0.11	-3.16
7,676.0	1.80	265.70	7,555.9	1,015.9	174.4	1,030.0	0.43	0.32	9.89
7,770.0	2.10	294.20	7,649.9	1,016.5	171.4	1,029.9	1.07	0.32	30.32
7,845.0	1.20	292.40	7,724.8	1,017.4	169.4	1,030.4	1.20	-1.20	-2.40
7,890.0	1.20	292.40	7,769.8	1,017.8	168.5	1,030.5	0.00	0.00	0.00
8,028.9	1.20	292.40	7,908.7	1,018.9	165.8	1,031.1	0.00	0.00	0.00
HARDLINES 100'N OF DRILL TARGET BHL									
8,032.0	1.20	292.40	7,911.8	1,018.9	165.8	1,031.1	0.00	0.00	0.00

Checked By: _____	Approved By: _____	Date: _____
-------------------	--------------------	-------------