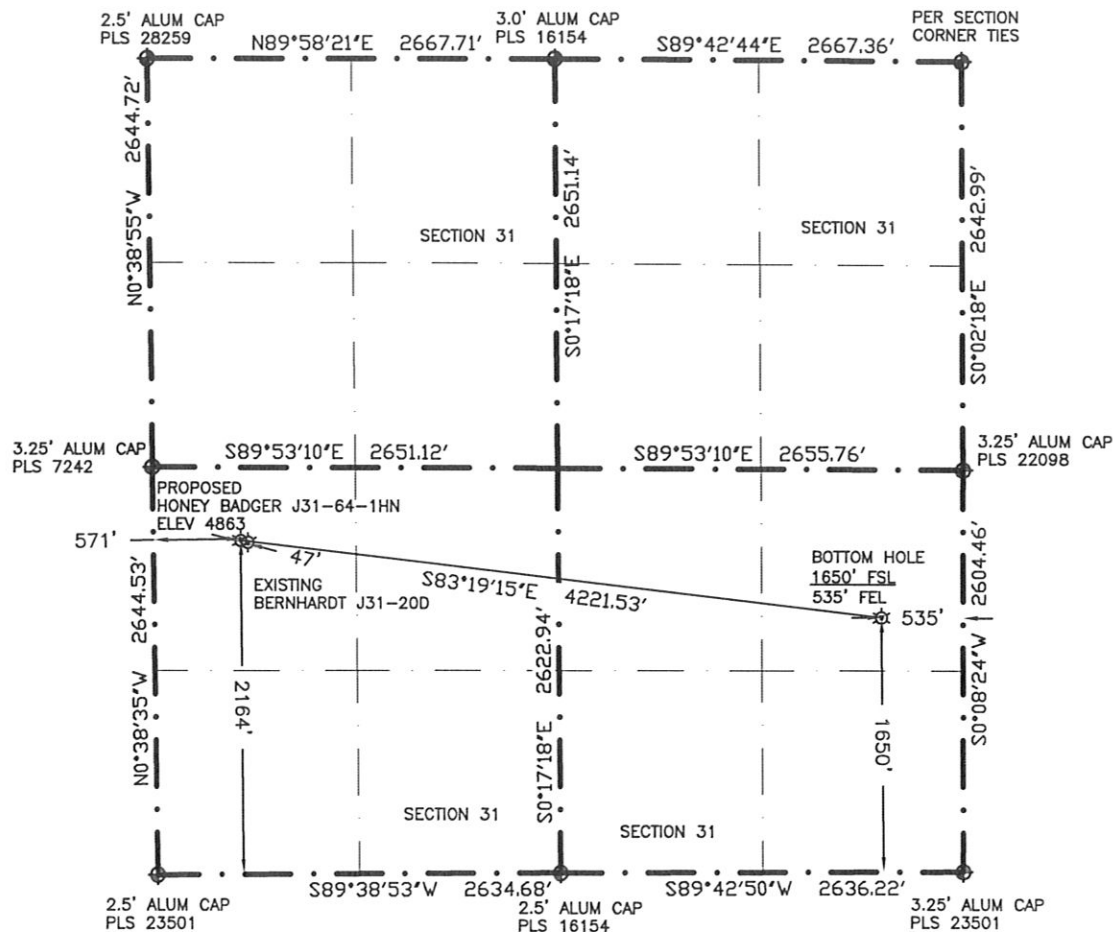


# WELL LOCATION CERTIFICATE

THIS MAP DOES NOT REPRESENT A BOUNDARY SURVEY

SECTION 31  
TOWNSHIP 5N  
RANGE 66W



IN ACCORDANCE WITH A REQUEST BY BRIAN DE ROSE-NOBLE ENERGY INC., BOUNDARY BOYS, LLC. HAS DETERMINED THE LOCATION OF THE HONEY BADGER J31-64-1HN WELL TO BE 2164' FSL, 571' FWL, AS MEASURED AT NINETY (90) DEGREES FROM THE SECTION LINES, AND THE BOTTOM HOLE TO BE 1650' FSL, 535' FEL, SECTION 31, TOWNSHIP 5 NORTH, RANGE 66 WEST, 6TH PRINCIPLE MERIDIAN, WELD COUNTY, COLORADO

I HEREBY CERTIFY THAT THIS WELL LOCATION CERTIFICATE WAS PREPARED BY ME, OR UNDER MY DIRECT SUPERVISION, THAT THE FIELD WORK WAS COMPLETED ON APRIL 18, 2012 FOR AND ON BEHALF OF NOBLE ENERGY INC., THAT IT IS NOT A LAND SURVEY PLAT OR AN IMPROVEMENT SURVEY PLAT, AND THAT IT IS NOT TO BE RELIED UPON FOR ESTABLISHMENT OF FENCE, BUILDING, OR OTHER FUTURE IMPROVEMENT LINES.

LATITUDE & LONGITUDE (NAD83 SURFACE HOLE)

LATITUDE: N 40.35474

LONGITUDE: W 104.82996

PDOP: 1.9

QUARTER-QUARTER: NW1/4, SECTION 31

NEAREST PROPERTY LINE: 571'

LATITUDE & LONGITUDE (NAD83 BOTTOM HOLE)

LATITUDE: N 40.35331

LONGITUDE: W 104.81493

QUARTER-QUARTER: NE1/4, SECTION 31

0 1200  
SCALE: 1"=1200'

- 1) BASIS OF BEARINGS FOR THIS MAP ARE BASED UPON GPS OBSERVATIONS MADE ON APRIL 18, 2012 BETWEEN MONUMENTS LOCATED AT THE NORTHWEST CORNER AND THE NE CORNER OF SAID SECTION 31 AND WITH ALL OTHER BEARINGS SHOWN HEREON RELATIVE THERETO.
- 2) ELEVATIONS ARE BASED UPON NGS OPUS SOLUTION, NAVD 88 DATUM
- 3) THE NEAREST EXISTING WELL IS BERNHARDT J31-200, 47' SOUTHEAST
- 4) SEE VISIBLE IMPROVEMENTS EXHIBIT FOR ALL IMPROVEMENTS WITH 400' IMPROVEMENT BUFFER
- 5) THE LOCATION FALLS IN IRRIGATED CROP LAND

NOTICE: According to Colorado law you MUST commence any legal action based upon any defect in this W.L.C. within three years after you first discover such defect. In no event may any action based upon any defect in this W.L.C. be commenced more than ten years from this said date of the certification shown hereon.

## LEGEND



FOUND SURVEY MONUMENT PER MONUMENT RECORD-EXCEPTIONS NOTED



(C) CALCULATED

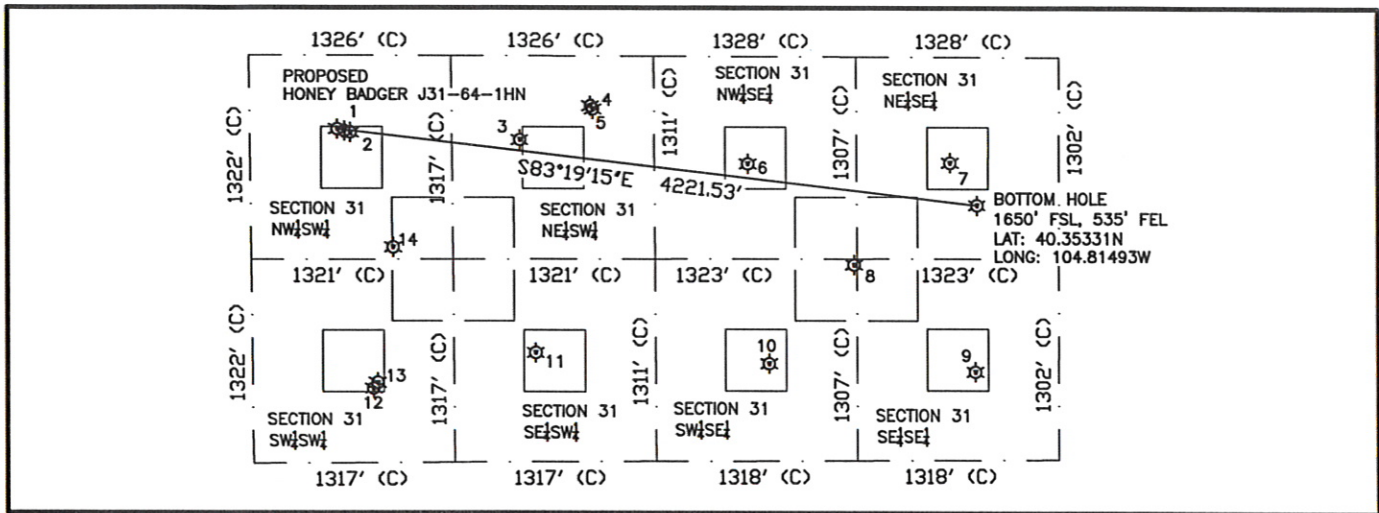


EXISTING WELL HEAD (UNLESS OTHERWISE NOTED)

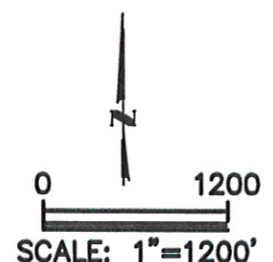


Gregory A. Clark  
Professional Land Surveyor Registration No. 32430  
State of Colorado

Job No. 1N0B0117



- |  |   |   |   |   |   |
|--|---|---|---|---|---|
| <p>①<br/>BERNHARDT J31-20D<br/>NW 1/4 SW 1/4<br/>2152' FSL<br/>617' FWL<br/>LAT- 40.35471N<br/>LONG- 104.82980W<br/>PDOP 1.9<br/>ELEV. 4862'</p> | <p>②<br/>UPRC 31-12H6<br/>NW 1/4 SW 1/4<br/>2142' FSL<br/>656' FWL<br/>LAT- 40.35468N<br/>LONG- 104.82966W<br/>PDOP 1.9<br/>ELEV. 4861'</p>     | <p>③<br/>UPRC 31-11H6<br/>NE 1/4 SW 1/4<br/>2088' FSL<br/>1769' FWL<br/>LAT- 40.35453N<br/>LONG- 104.82566W<br/>PDOP 2.3<br/>ELEV. 4841'</p>  | <p>④<br/>BERNHARDT J31-21D<br/>NE 1/4 SW 1/4<br/>2304' FSL<br/>2234' FWL<br/>LAT- 40.35512N<br/>LONG- 104.82400W<br/>PDOP 1.9<br/>ELEV. 4846'</p> | <p>⑤<br/>BERNHARDT J31-22D<br/>NE 1/4 SW 1/4<br/>2285' FSL<br/>2249' FWL<br/>LAT- 40.35507N<br/>LONG- 104.82394W<br/>PDOP 2.1<br/>ELEV. 4846'</p> | <p>⑥<br/>STEPHENS J31-10<br/>NW 1/4 SE 1/4<br/>1925' FSL<br/>2036' FEL<br/>LAT- 40.35408N<br/>LONG- 104.82030W<br/>PDOP 1.7<br/>ELEV. 4825'</p> |
| <p>⑦<br/>STEPHENS J31-9<br/>NE 1/4 SE 1/4<br/>1926' FSL<br/>711' FEL<br/>LAT- 40.35407N<br/>LONG- 104.81555W<br/>PDOP 2.0<br/>ELEV. 4808'</p>    | <p>⑧<br/>STEPHENS J31-23<br/>SW 1/4 SE 1/4<br/>1268' FSL<br/>1340' FEL<br/>LAT- 40.35227N<br/>LONG- 104.81783W<br/>PDOP 1.6<br/>ELEV. 4844'</p> | <p>⑨<br/>STEPHENS J31-16<br/>SE 1/4 SE 1/4<br/>572' FSL<br/>545' FEL<br/>LAT- 40.35035N<br/>LONG- 104.81500W<br/>PDOP 1.7<br/>ELEV. 4807'</p> | <p>⑩<br/>STEPHENS J31-15<br/>SW 1/4 SE 1/4<br/>631' FSL<br/>1896' FEL<br/>LAT- 40.35052N<br/>LONG- 104.81985W<br/>PDOP 1.7<br/>ELEV. 4797'</p>    | <p>⑪<br/>UPRC J31-14<br/>SE 1/4 SW 1/4<br/>709' FSL<br/>1857' FWL<br/>LAT- 40.35075N<br/>LONG- 104.82533W<br/>PDOP 2.3<br/>ELEV. 4831'</p>        | <p>⑫<br/>UPRC 31-13H6<br/>SW 1/4 SW 1/4<br/>483' FSL<br/>788' FWL<br/>LAT- 40.35013N<br/>LONG- 104.82916W<br/>PDOP 1.8<br/>ELEV. 4840'</p>      |
| <p>⑬<br/>BERNHARDT J31-33D<br/>SW 1/4 SW 1/4<br/>520' FSL<br/>816' FWL<br/>LAT- 40.35023N<br/>LONG- 104.82906W<br/>PDOP 2.5<br/>ELEV. 4841'</p>  | <p>⑭<br/>UPRC 31-25<br/>NW 1/4 SW 1/4<br/>1398' FSL<br/>928' FWL<br/>LAT- 40.35264N<br/>LONG- 104.82867W<br/>PDOP 1.8<br/>ELEV. 4847'</p>       |   |   |   |   |



1) THIS SKETCH DOES NOT REPRESENT A BOUNDARY SURVEY  
2) THE DATUM FOR THE LATITUDES AND LONGITUDES ON THIS SKETCH IS NAD83