

T5N, R90W, 6th P.M.

SWEP1 LP

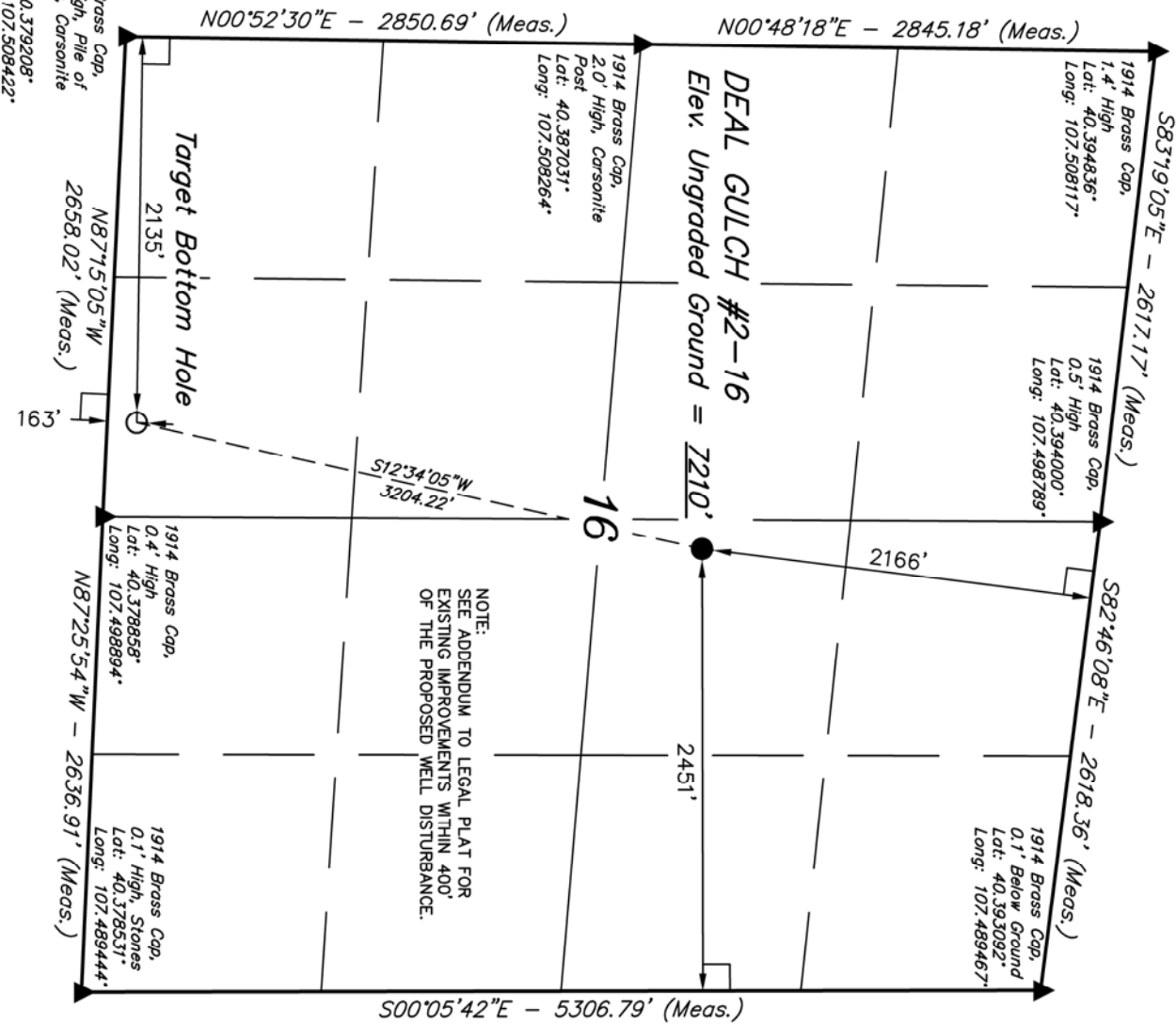
Well location, DEAL GULCH #2-16, located as shown in the SW 1/4 NE 1/4 of Section 16, T5N, R90W, 6th P.M., Moffat County, Colorado.

BASIS OF ELEVATION

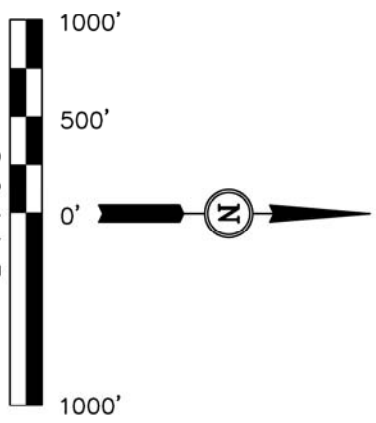
SPOT ELEVATION AT THE NORTHEAST CORNER OF SECTION 31, T5N, R90W, 6th P.M. TAKEN FROM THE HAMILTON QUADRANGLE, COLORADO, MOFFAT COUNTY, 7.5 MINUTE QUAD (TOPOGRAPHIC MAP) PUBLISHED BY THE UNITED STATES DEPARTMENT OF THE INTERIOR, GEOLOGICAL SURVEY. SAID ELEVATION IS MARKED AS BEING 6664 FEET.

BASIS OF BEARINGS

BASIS OF BEARINGS IS A G.P.S. OBSERVATION.



NOTE:  
SEE ADDENDUM TO LEGAL PLAT FOR  
EXISTING IMPROVEMENTS WITHIN 400'  
OF THE PROPOSED WELL DISTURBANCE.



CERTIFICATE

THIS IS TO CERTIFY THAT THE ABOVE PLAT WAS PREPARED FROM FIELD NOTES OF ACTUAL SURVEYS MADE BY ME OR UNDER MY SUPERVISION AND THAT THE SAME ARE TRUE AND CORRECT TO THE BEST OF MY KNOWLEDGE AND BELIEF.

REGISTERED LAND SURVEYOR  
REGISTRATION NO. 12492  
STATE OF COLORADO  
06-20-12

UINTAH ENGINEERING & LAND SURVEYING  
86 SOUTH 200 EAST - VERNAL, UTAH 84078  
(435) 789-1017

SCALE	DATE SURVEYED:	DATE DRAWN:
1" = 1000'	06-18-12	06-19-12

NAD 83 (TARGET BOTTOM HOLE)	NAD 83 (SURFACE LOCATION)
LATITUDE = 40°22'45.75" (40.379375)	LATITUDE = 40°23'16.64" (40.387956)
LONGITUDE = 107°30'02.73" (107.500758)	LONGITUDE = 107°29'53.71" (107.498253)
NAD 27 (TARGET BOTTOM HOLE)	NAD 27 (SURFACE LOCATION)
LATITUDE = 40°22'45.84" (40.379400)	LATITUDE = 40°23'16.73" (40.387981)
LONGITUDE = 107°30'00.50" (107.500139)	LONGITUDE = 107°29'51.48" (107.497633)

- LEGEND:
- 90° SYMBOL
  - PROPOSED WELL HEAD.
  - SECTION CORNERS LOCATED
- PDOP = 1.6