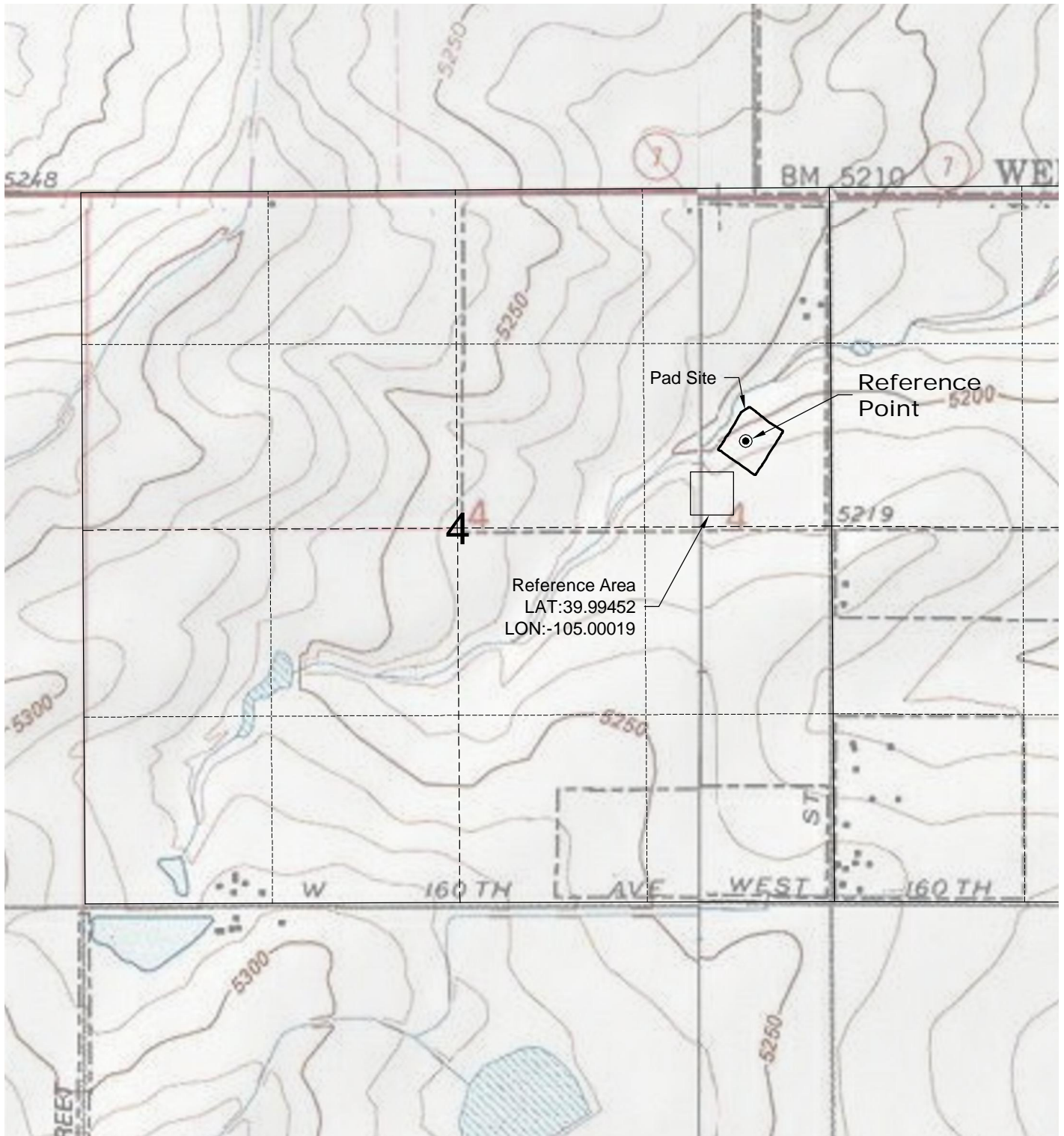


REFERENCE AREA MAP



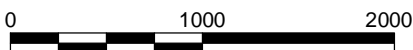
Reference Area
LAT:39.99452
LON:-105.00019

Pad Site

Reference Point



North



Graphic Scale in Feet
1" = 1000'



LAND SURVEYING AND MAPPING
LAFAYETTE - WINTER PARK
Ph 303 666 0379 Fx 303 665 6320

SOVEREIGN OPERATING CO., LLC
HULSTROM G UNIT 1 PAD

SE1/4 NE1/4 SECTION 4 T1S R68W
6th PM BROOMFIELD COUNTY COLORADO

5/2/12