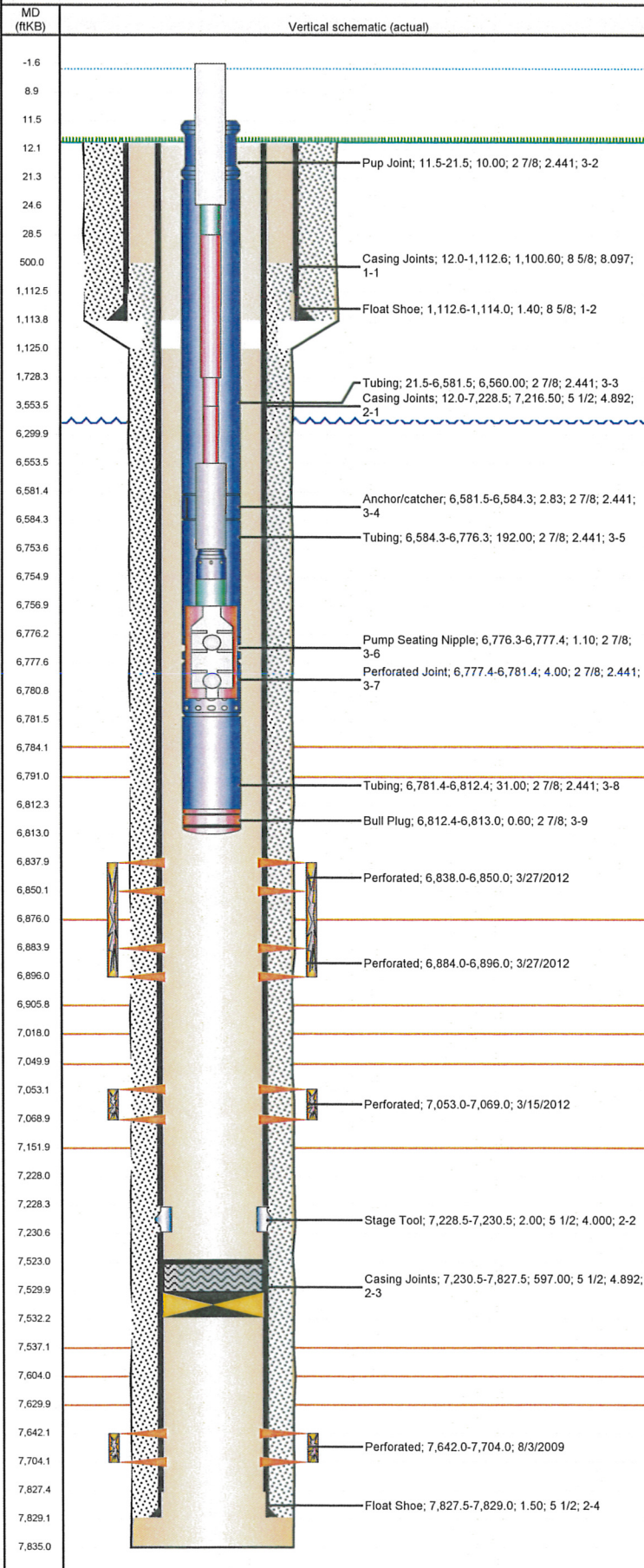


Well Name: DF RANCH 02-33

VERTICAL - ORIGINAL HOLE, 7/11/2012 9:33:21 AM



Well Header

API	Business Unit	District	Well Config
05-123-30247	WATTENBERG	25	VERTICAL
Original KB Elevation (ft)	KB - GL / MSL (ftKB)	Spud Date	P & A Date
5,243.00	12.00	5/16/2009	

Comment
DV TOOL @ 7227.74' & DRILLED OUT

Directions To Well
GROVER COLO. WCR 89 & 122, NORTH 4.5, EAST 2.0, NORTH .6, EAST INTO.

Surface Location (Congressional)

Quarter 1	Quarter 2	Quarter 3	Quarter 4	Section	Township	Twnshp...	Range	Rng E/W...
		SW	SW	2	11	N	61	W

Bottom Hole Location

North-South Distance (ft)	From N or S Line	East-West Distance (ft)	From E or W Line

Plug Back Total Depths

Date	Depth (ftKB)	Method	Com
5/20/2009	7,813.0	TAG	GUIDE SHOE
6/17/2009	7,809.0	CASED HOLE LOG	DEPTH LOGGER
5/7/2010	7,780.1	TAG	TBG TALLY MEASUREMENT.
5/10/2010	7,810.0	TAG	BAIL SAND. TBG TALLY MEASUREMENT.
3/15/2012	7,530.0	TAG	CIBP W 2SXS OF CMT
4/12/2012	7,523.0	TAG	PUSHED FTP TO CMT ON CIBP

Wellbore Sections

Section Des	Size (in)	Act Top (ftKB)	Act Btm (ftKB)
SURFACE	12 1/4	12.0	1,114.0
PRODUCTION	7 7/8	1,125.0	7,835.0

Zone Statuses

Zone Name	Status Date	Status	Job
J SAND	8/12/2009	PR	DRILLING/COMPLETION - ORIGINAL, 5/16/2009 00:00
J SAND	3/15/2012	AB	RECOMPLETION, 3/13/2012 14:00
CODELL	4/17/2012	PR	RECOMPLETION, 3/13/2012 14:00
NIOBRARA	4/17/2012	PR	RECOMPLETION, 3/13/2012 14:00

Casing Strings

Surface, 1,114.0ftKB

Casing Description	Run Date	OD (in)	Wt/Len (l...)	Grade	Top (ftKB)	Set Depth...
Surface	5/17/2009	8 5/8	24.00	J-55	12.0	1,114.0

Production, 7,829.0ftKB

Casing Description	Run Date	OD (in)	Wt/Len (l...)	Grade	Top (ftKB)	Set Depth...
Production	5/20/2009	5 1/2	17.00	N-80	12.0	7,829.0

Cement

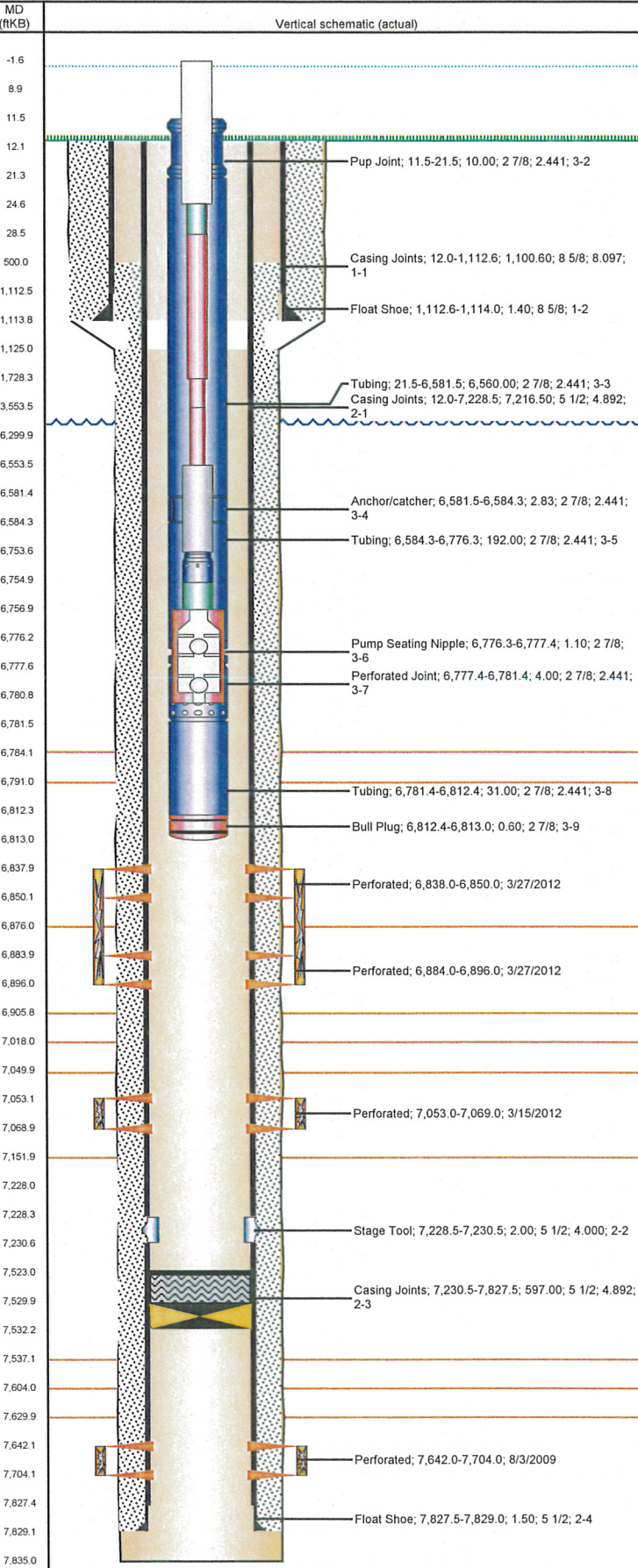
Description	Top Depth (ftKB)	Bottom Depth (ftKB)
Surface Casing Cement	12.0	1,114.0
Production Casing Cement	500.0	6,300.0
Production Casing Cement	6,300.0	7,228.0
Production Casing Cement	7,228.0	7,829.0
Dump Bail	7,523.0	7,530.0

Tubing Components

Item Des	OD (in)	Wt (lb/ft)	Grade	Jts	Len (ft)	Btm (ftKB)	Btm (TVD) (ftKB)
Stretch Correction					2.50	11.5	
Pup Joint	2 7/8	6.50	N-80	1	10.00	21.5	
Tubing	2 7/8	6.50	J-55	205	6,560.00	6,581.5	
Anchor/catcher	2 7/8	6.50	J-55	1	2.83	6,584.3	
Tubing	2 7/8	6.50	J-55	6	192.00	6,776.3	
Pump Seating Nipple	2 7/8	6.50	J-55	1	1.10	6,777.4	
Perforated Joint	2 7/8	6.50	J-55	1	4.00	6,781.4	
Tubing	2 7/8	6.50	J-55	1	31.00	6,812.4	
Bull Plug	2 7/8	6.50	J-55	1	0.60	6,813.0	

Well Name: DF RANCH 02-33

VERTICAL - ORIGINAL HOLE, 7/11/2012 9:33:22 AM



Rods & Pumps

Rod Description		Run Date	Set Depth (ftKB)
Rod		4/16/2012	6,781.0
Comment			
Item Description	OD Nominal (in)	Joints	Length (ft)
Polished Rod	1 1/2	1	26.00
Item Description	OD Nominal (in)	Joints	Length (ft)
Pony Rod	1	1	4.00
Item Description	OD Nominal (in)	Joints	Length (ft)
Sucker Rod	1	68	1,700.00
Item Description	OD Nominal (in)	Joints	Length (ft)
Sucker Rod	3/4	73	1,825.00
Item Description	OD Nominal (in)	Joints	Length (ft)
Sucker Rod	3/4	120	3,000.00
Item Description	OD Nominal (in)	Joints	Length (ft)
Sinker Bar	1 1/2	8	200.00
Item Description	OD Nominal (in)	Joints	Length (ft)
Safety Joint	1 1/2	1	1.50
Item Description	OD Nominal (in)	Joints	Length (ft)
Pony Rod	1 1/2	1	2.00
Item Description	OD Nominal (in)	Joints	Length (ft)
RHBC Pump	2 1/2	1	24.00
Item Description	OD Nominal (in)	Joints	Length (ft)
	2 1/2		
API Pump Type		Barrel Length (ft)	Seating Assembly Type
R		24.00	C

Perforation Data

Zone	Bnch/St g	Entered Shot Total	Top (ftKB)	Btm (ftKB)	Date
NIORARA, ORIGINAL HOLE	B	24	6,838.0	6,850.0	3/27/2012
NIORARA, ORIGINAL HOLE	C	24	6,884.0	6,896.0	3/27/2012
CODELL, ORIGINAL HOLE		64	7,053.0	7,069.0	3/15/2012
J SAND, ORIGINAL HOLE		248	7,642.0	7,704.0	8/3/2009

Stimulations & Treatments

Date	Zone	Primary Job Type
8/5/2009	J SAND, ORIGINAL HOLE	DRILLING/COMPLETION - ORIGINAL
Technical Result		Tech Result Note
Comment		
Date	Zone	Primary Job Type
3/27/2012	CODELL, ORIGINAL HOLE	RECOMPLETION
Technical Result		Tech Result Note
Success		According to Plan

Comment
(CODELL RC): PREJOB ISIP=2285 PSI, 5 MIN=1978. REVERSE RATE: NWB=955, PERF=10, WB=99 PSI (BASED ON PRESSURE RESPONSE IN THE MIDDLE OF THE RATE TEST, I DON'T BELIEVE THERE WAS GOOD GEL ON FORMATION BEFORE STARTING THE STEP RATE TEST). JOB AVERAGES: 2562 PSI, 25.6 BPM, 19.9 CP, 10.3 PH, 69.6 F. JOB MAX: 3688 PSI & 25.9 BPM. POST JOB ISIP= 2513, 5 MIN= 2459 PSI. .JOB WENT WELL, NO ISSUES TO REPORT.

Date	Zone	Primary Job Type
3/27/2012	NIORARA, ORIGINAL HOLE	RECOMPLETION
Technical Result		Tech Result Note
Success		According to Plan

Comment
(NIORARA B,C RC) : PREJOB ISIP=2367 PSI. BLENDER SUCKED AIR WHILE SWAPPING TO GEL, HAD TO REDUCE RATE. VISCOSITY FELL TO 10 CP DURING PAD, HAD TO REDUCE RATE TO 35 BPM WHILE ADDITIONAL SUCTION HOSES WERE HOOKED UP TO BLENDER. ONCE ADDITIONAL HOSES WERE CONNECTED, RATE & VISCOSITY LINED OUT AND WE PROCEEDED TO 1 PPG SAND. HAD TO RUN ABOUT 400 BBLs OF EXTRA GEL PAD. JOB AVERAGES: 2854 PSI, 52.7 BPM, 17.4 CP, 10.35 PH, 75.1F. JOB MAX: 3224 PSI, 59.1 BPM. POST JOB ISIP= 2560 PSI , 5 MIN=2438 PSI .

Other In Hole

Run Date	Des	OD (in)	Top (ftKB)	Btm (ftKB)
3/15/2012	Cast Iron Bridge Plug	5	7,530.0	7,532.0

Logs

Date	Type	Top (ftKB)	Btm (ftKB)
5/20/2009	COMPENSATED DENSITY	3,940.0	7,806.0
5/20/2009	INDUCTION	1,112.0	7,826.0
6/17/2009	CBL/CCL/GR	11.0	7,808.0