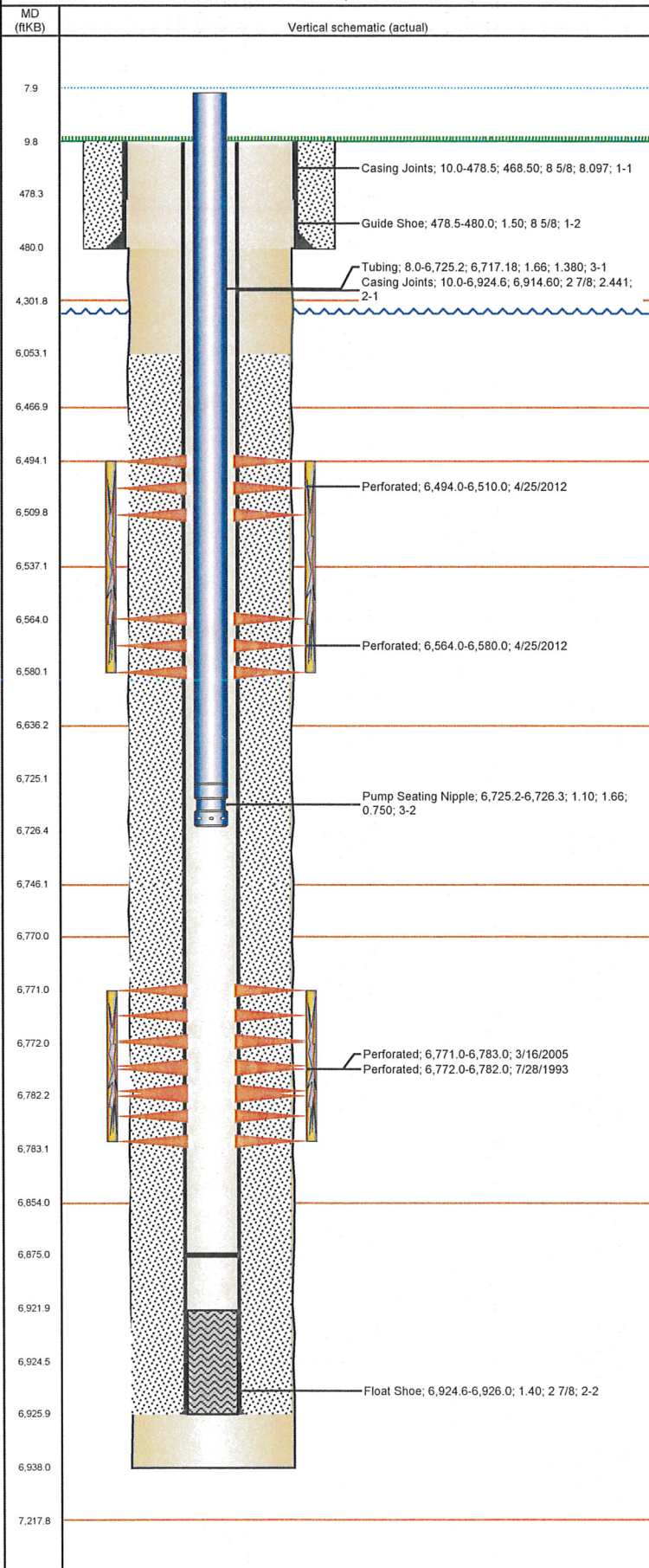


Well Name: SPIKE STATE GWS CC30-02

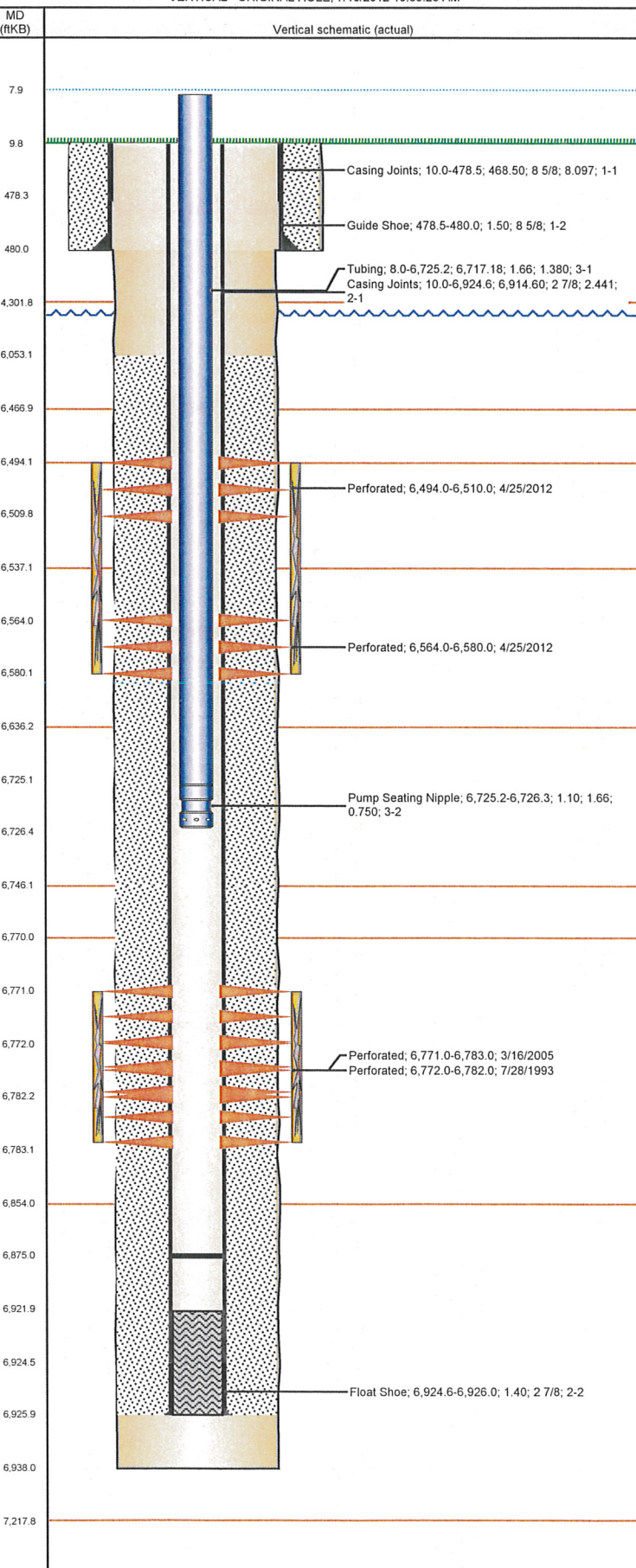
VERTICAL - ORIGINAL HOLE, 7/10/2012 10:36:27 AM



Well Header									
API 05-123-15820		Business Unit WATTENBERG		District 15		Well Config VERTICAL			
Original KB Elevation (ft) 4,752.00		KB - GL / MSL (ftKB) 10.00		Spud Date 7/20/1993		P & A Date			
Comment									
Directions To Well WCR 61 & WCR 46, SOUTH 2 MILES, SOUTHEAST 1 MILE, EAST 0.4, NORTH 0.7, NORTHWEST 0.1 INTO									
Current PBTD (ftKB) ORIGINAL HOLE - 6,875.0									
Surface Location (Congressional)									
Quarter 1	Quarter 2	Quarter 3 NW	Quarter 4 NE	Section 30	Township 4 N	Twnshp N...	Range 63	Rng E/W Dir W	
Bottom Hole Location									
North-South Distance (ft)		From N or S Line		East-West Distance (ft)			From E or W Line		
Plug Back Total Depths									
Date		Depth (ftKB)		Method		Com			
7/25/1993		6,922.0		CASING TALLY		ORIGINAL PBTD, LATCH DOWN BAFFLE			
7/28/1993		6,869.0		CASED HOLE LOG		DEPTH LOGGER			
Wellbore Sections									
Section Des			Size (in)		Act Top (ftKB)		Act Btm (ftKB)		
SURFACE			12 1/4		10.0		480.0		
PRODUCTION			7 7/8		480.0		6,938.0		
Zone Statuses									
Zone Name		Status Date		Status		Job			
CODELL		8/19/1993		PR		DRILLING/COMPLETION - ORIGINAL, 7/20/1993 00:00			
CODELL		5/23/2005		PR		RE-FRAC, 3/11/2005 00:00			
NIOBRARA		5/22/2012		PR		RECOMPLETION, 4/23/2012 06:00			
Casing Strings									
Csg Des		Run Date		OD (in)	Wt/Len (lb/ft)	Grade	Top (ftKB)	Set Depth (ftKB)	
Surface Casing		7/21/1993		8 5/8	24.00		10.0	480.0	
Production		7/25/1993		2 7/8	6.50	N-80	10.0	6,926.0	
Cement									
Des					Top (ftKB)		Btm (ftKB)		
SURFACE CASING CEMENT					10.0		480.0		
PRODUCTION CASING CEMENT					6,053.0		6,926.0		
Tubing Components									
Item Des		OD (in)		Wt (lb/ft)		Grade	Jts	Len (ft)	
Tubing		1.66		2.33		J-55	201	6,717.18	
Pump Seating Nipple		1.66		2.33		J-55	1	1.10	
Perforation Data									
Zone		Bnch/St g	Entered Shot Total	Top (ftKB)		Btm (ftKB)		Date	
NIOBRARA, ORIGINAL HOLE		A	64	6,494.0		6,510.0		4/25/2012	
NIOBRARA, ORIGINAL HOLE		B	64	6,564.0		6,580.0		4/25/2012	
CODELL, ORIGINAL HOLE			48	6,771.0		6,783.0		3/16/2005	
CODELL, ORIGINAL HOLE			40	6,772.0		6,782.0		7/28/1993	
Stimulations & Treatments									
Bnch/Stg	Date	Zone			Primary Job Type				
	8/2/1993	CODELL, ORIGINAL HOLE			DRILLING/COMPLETION - ORIGINAL				
Comment									
Total Add Amount Proppant SAND 151300 lb			Total Clean Volume...		Vol Slurry Tot (gal) 57792.00		Vol Gas Tot (MCF)		
Avg Treat Pressure (psi) 4,500.0		Max Treat Pressure (psi) 4,930.0		Avg Treat Rate (bbl/min) 16.00		Max Treat Rate (bbl/min) 16.00			
Bnch/Stg	Date	Zone			Primary Job Type				
	3/30/2005	CODELL, ORIGINAL HOLE			RE-FRAC				
Comment									
Total Add Amount Proppant Ottawa 245540 lb			Total Clean Volume...		Vol Slurry Tot (gal) 127806.00		Vol Gas Tot (MCF)		
Avg Treat Pressure (psi) 4,521.0		Max Treat Pressure (psi) 4,930.0		Avg Treat Rate (bbl/min) 14.30		Max Treat Rate (bbl/min) 14.40			

Well Name: SPIKE STATE GWS CC30-02

VERTICAL - ORIGINAL HOLE, 7/10/2012 10:36:28 AM



Stimulations & Treatments

Brch/Stg	Date	Zone	Primary Job Type
	5/8/2012	NIOBRARA, ORIGINAL HOLE	RECOMPLETION
<p>Comment</p> <p>(NIOBRARA)- BREAK 3536 @ 3.1, ISIP 3210, POST ISIP 3370, POST 5MIN 3075, AVER VISC 16.7, AVER PH 10.76, AVER TEMP 71.15. STARTED BF-7 EARLY TO HELP STABILIZE PRESSURE. WAS THEN LATER TOLD THAT GBW-5 WAS RUNNING FAST THAN EXPECTED. LOST COMMUNICATION WITH THE BLENDER 871 BBLs INTO THE JOB, DURING FR PAD. SHUTDOWN TO RESET TMV FILE. TMV DID NOT CALCULATE BOTTOM HOLE BEFORE IT LOST SIGNING AND WAS RESTARTED. UNIT NUMBER FOR TMV IS T-791. SEVERAL SPIKE IN THE BLENDER DENSO DURING 2 AND 3 # SAND, NOT SEEN ON THE INLINE. BLENDER LOST SUCTION DURING 4#, CAUSED A TUB DROP THAT RESULTED IN A 5# SAND SLUG. XLINK PUMP WEARING OUT, CHEMICAL RUNNING OF TANK STRAPS. CHEMICAL ADJUSTMENTS WERE VISIBLE IN TREAT PRESSURE.</p>			
Total Add Amount	Total Clean Volume...	Vol Slurry Tot (gal)	Vol Gas Tot (MCF)
Proppant Ottawa 251191.7 lb	149505.30	160897.80	
Avg Treat Pressure (psi)	Max Treat Pressure (psi)	Avg Treat Rate (bbl/min)	Max Treat Rate (bbl/min)
4,996.0	5,203.0	18.38	18.96

Other In Hole

Run Date	Des	OD (in)	Top (ftKB)	Btm (ftKB)

Logs

Date	Type	Top (ftKB)	Btm (ftKB)
7/25/1993	COMPENSATED DENSITY	4,100.0	6,950.0
7/25/1993	INDUCTION	6,000.0	6,950.0
7/28/1993	CBL/CCL/GR	5,900.0	6,876.0