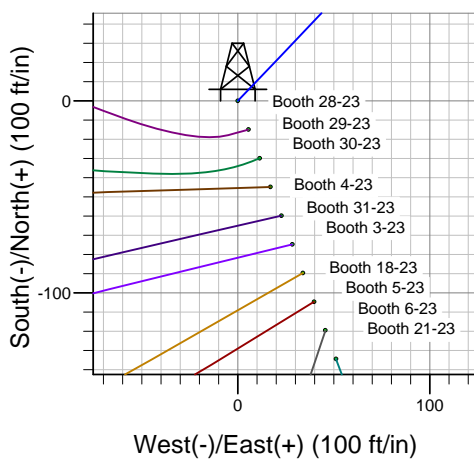
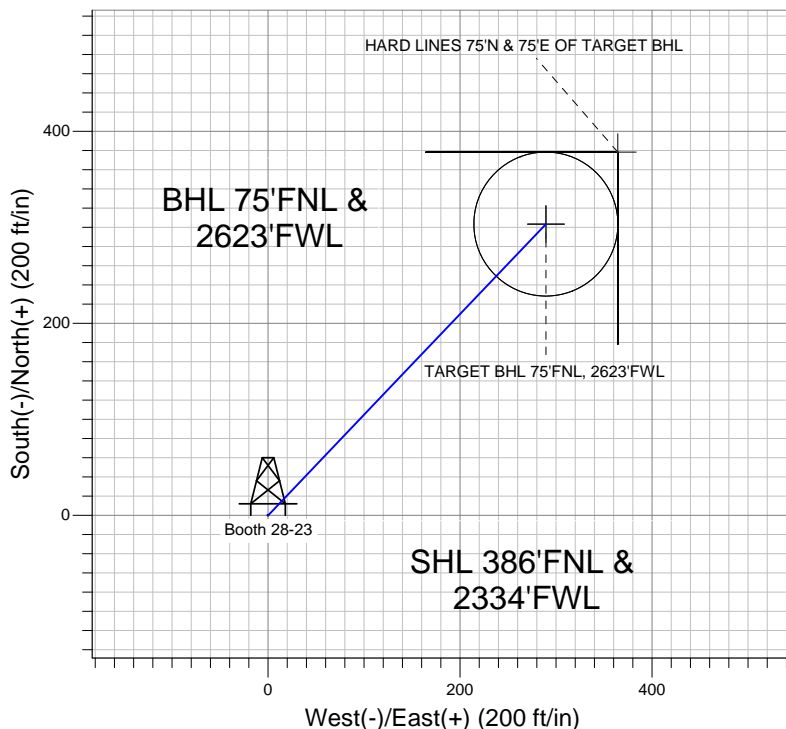
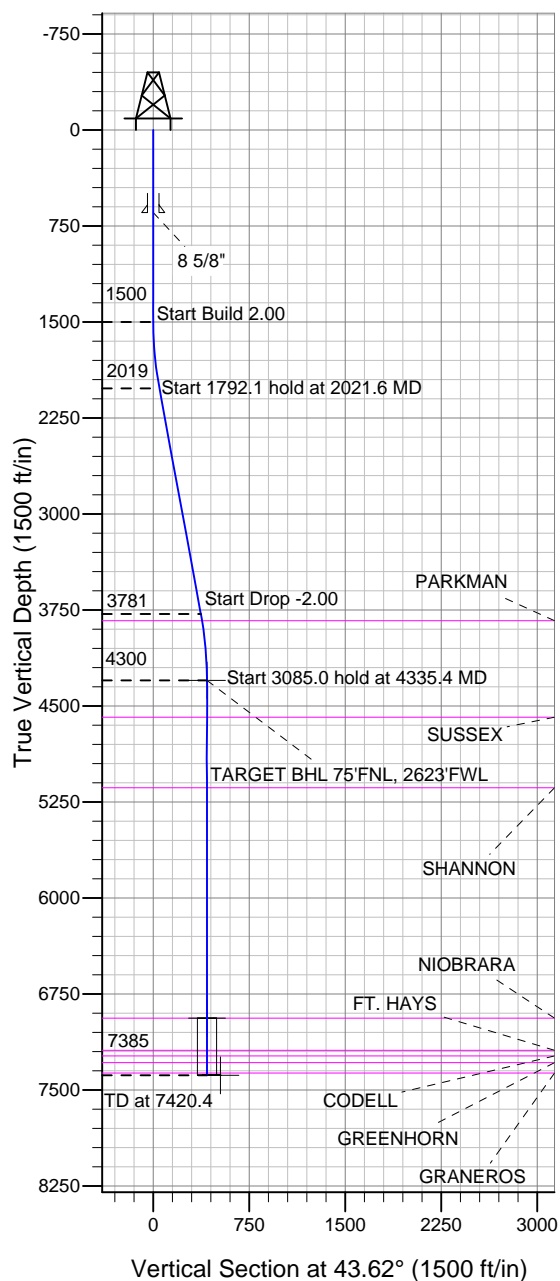


Well Name: Booth 28-23

Surface Location: Booth 10 Pad Sec.23-T7N-R65W
North American Datum 1983, US State Plane 1983Colorado Northern Zone
Ground Elevation: 4897.0

+N/-S	+E/-W	Northing	Easting	Latitude	Longitude	Slot
0.0	0.0	1449951.38	3241340.20	40.565271	-104.631329	
		Original Well Elev	WELL @ 4913.0ft (Original Well Elev)			

BAYSWATER EXPLORATION & PRODUCTION



Booth 10 Pad Sec.23-T7N-R65W
Booth 28-23
Plan #1 (5-07-12)
13:36, May 10 2012



Azimuths to True North
Magnetic North: 8.69°
Magnetic Field
Strength: 53137.0snT
Dip Angle: 67.18°
Date: 5/7/2012
Model: IGRF2010

WELLBORE TARGET DETAILS (LAT/LONG)

Name	TVD	+N/-S	+E/-W	Latitude	Longitude	Shape
TARGET BHL 75'FNL, 2623'FWL	4300.0	303.5	289.2	40.566104	-104.630288	Point
TARGET CIRCLE 75'FNL & 2623'FWL	6938.0	303.5	289.2	40.566104	-104.630288	Circle (Radius: 75.0)
HARD LINES 75'N & 75'E OF TARGET BHL	7385.0	378.5	364.2	40.566310	-104.630018	Polygon

SECTION DETAILS

Sec	MD	Inc	Azi	TVD	+N/-S	+E/-W	DLeg	TFace	VSec	Target
1	0.0	0.00	0.00	0.0	0.0	0.0	0.00	0.00	0.0	
2	1500.0	0.00	0.00	1500.0	0.0	0.0	0.00	0.00	0.0	
3	2021.6	10.43	43.62	2018.8	34.3	32.7	2.00	43.62	47.4	
4	3813.7	10.43	43.62	3781.2	269.2	256.6	0.00	0.00	371.9	
5	4335.4	0.00	0.00	4300.0	303.5	289.2	2.00	180.00	419.2	TARGET BHL 75'FNL, 2623'FWL
6	7420.4	0.00	0.00	7385.0	303.5	289.2	0.00	0.00	419.2	



BAYSWATER EXPLORATION & PRODUCTION

SEC.23-T7N-R65W

Booth 10 Pad Sec.23-T7N-R65W

Booth 28-23

Wellbore #1

Plan: Plan #1 (5-07-12)

Standard Planning Report

10 May, 2012

Database:	Landmark	Local Co-ordinate Reference:	Well Booth 28-23
Company:	BAYSWATER EXPLORATION & PRODUCTION	TVD Reference:	WELL @ 4913.0ft (Original Well Elev)
Project:	SEC.23-T7N-R65W	MD Reference:	WELL @ 4913.0ft (Original Well Elev)
Site:	Booth 10 Pad Sec.23-T7N-R65W	North Reference:	True
Well:	Booth 28-23	Survey Calculation Method:	Minimum Curvature
Wellbore:	Wellbore #1		
Design:	Plan #1 (5-07-12)		

Project	SEC.23-T7N-R65W, Weld County, CO		
Map System:	US State Plane 1983	System Datum:	Mean Sea Level
Geo Datum:	North American Datum 1983		Using Well Reference Point
Map Zone:	Colorado Northern Zone		Using geodetic scale factor

Site		Booth 10 Pad Sec.23-T7N-R65W			
Site Position:		Northing:	1,449,951.39ft	Latitude:	40.565271
From:	Lat/Long	Easting:	3,241,340.20ft	Longitude:	-104.631329
Position Uncertainty:	0.0 ft	Slot Radius:	"	Grid Convergence:	0.56 °

Well	Booth 28-23					
Well Position	+N-S	0.0 ft	Northing:	1,449,951.38 ft	Latitude:	40.565271
	+E-W	0.0 ft	Easting:	3,241,340.20 ft	Longitude:	-104.631329
Position Uncertainty		0.0 ft	Wellhead Elevation:	ft	Ground Level:	4,897.0 ft

Wellbore	Wellbore #1				
Magnetics	Model Name	Sample Date	Declination (°)	Dip Angle (°)	Field Strength (nT)
	IGRF2010	5/7/2012	8.69	67.18	53,137

Design	Plan #1 (5-07-12)			
Audit Notes:				
Version:	Phase:	PROTOTYPE	Tie On Depth:	0.0
Vertical Section:	Depth From (TVD) (ft)	+N/-S (ft)	+E/-W (ft)	Direction (°)
	0.0	0.0	0.0	43.62

Plan Sections										
Measured Depth (ft)	Inclination (°)	Azimuth (°)	Vertical Depth (ft)	+N/-S (ft)	+E/-W (ft)	Dogleg Rate (°/100ft)	Build Rate (°/100ft)	Turn Rate (°/100ft)	TFO (°)	Target
0.0	0.00	0.00	0.0	0.0	0.0	0.00	0.00	0.00	0.00	
1,500.0	0.00	0.00	1,500.0	0.0	0.0	0.00	0.00	0.00	0.00	
2,021.6	10.43	43.62	2,018.8	34.3	32.7	2.00	2.00	0.00	43.62	
3,813.7	10.43	43.62	3,781.2	269.2	256.6	0.00	0.00	0.00	0.00	
4,335.4	0.00	0.00	4,300.0	303.5	289.2	2.00	-2.00	0.00	180.00	TARGET BHL 75°F
7,420.4	0.00	0.00	7,385.0	303.5	289.2	0.00	0.00	0.00	0.00	

Database:	Landmark	Local Co-ordinate Reference:	Well Booth 28-23
Company:	BAYSWATER EXPLORATION & PRODUCTION	TVD Reference:	WELL @ 4913.0ft (Original Well Elev)
Project:	SEC.23-T7N-R65W	MD Reference:	WELL @ 4913.0ft (Original Well Elev)
Site:	Booth 10 Pad Sec.23-T7N-R65W	North Reference:	True
Well:	Booth 28-23	Survey Calculation Method:	Minimum Curvature
Wellbore:	Wellbore #1		
Design:	Plan #1 (5-07-12)		

Planned Survey

Measured Depth (ft)	Inclination (°)	Azimuth (°)	Vertical Depth (ft)	+N/-S (ft)	+E/-W (ft)	Vertical Section (ft)	Dogleg Rate (°/100ft)	Build Rate (°/100ft)	Turn Rate (°/100ft)
0.0	0.00	0.00	0.0	0.0	0.0	0.0	0.00	0.00	0.00
40.0	0.00	0.00	40.0	0.0	0.0	0.0	0.00	0.00	0.00
80.0	0.00	0.00	80.0	0.0	0.0	0.0	0.00	0.00	0.00
120.0	0.00	0.00	120.0	0.0	0.0	0.0	0.00	0.00	0.00
160.0	0.00	0.00	160.0	0.0	0.0	0.0	0.00	0.00	0.00
200.0	0.00	0.00	200.0	0.0	0.0	0.0	0.00	0.00	0.00
240.0	0.00	0.00	240.0	0.0	0.0	0.0	0.00	0.00	0.00
280.0	0.00	0.00	280.0	0.0	0.0	0.0	0.00	0.00	0.00
320.0	0.00	0.00	320.0	0.0	0.0	0.0	0.00	0.00	0.00
360.0	0.00	0.00	360.0	0.0	0.0	0.0	0.00	0.00	0.00
400.0	0.00	0.00	400.0	0.0	0.0	0.0	0.00	0.00	0.00
440.0	0.00	0.00	440.0	0.0	0.0	0.0	0.00	0.00	0.00
480.0	0.00	0.00	480.0	0.0	0.0	0.0	0.00	0.00	0.00
520.0	0.00	0.00	520.0	0.0	0.0	0.0	0.00	0.00	0.00
560.0	0.00	0.00	560.0	0.0	0.0	0.0	0.00	0.00	0.00
600.0	0.00	0.00	600.0	0.0	0.0	0.0	0.00	0.00	0.00
640.0	0.00	0.00	640.0	0.0	0.0	0.0	0.00	0.00	0.00
645.0	0.00	0.00	645.0	0.0	0.0	0.0	0.00	0.00	0.00
8 5/8"									
680.0	0.00	0.00	680.0	0.0	0.0	0.0	0.00	0.00	0.00
720.0	0.00	0.00	720.0	0.0	0.0	0.0	0.00	0.00	0.00
760.0	0.00	0.00	760.0	0.0	0.0	0.0	0.00	0.00	0.00
800.0	0.00	0.00	800.0	0.0	0.0	0.0	0.00	0.00	0.00
840.0	0.00	0.00	840.0	0.0	0.0	0.0	0.00	0.00	0.00
880.0	0.00	0.00	880.0	0.0	0.0	0.0	0.00	0.00	0.00
920.0	0.00	0.00	920.0	0.0	0.0	0.0	0.00	0.00	0.00
960.0	0.00	0.00	960.0	0.0	0.0	0.0	0.00	0.00	0.00
1,000.0	0.00	0.00	1,000.0	0.0	0.0	0.0	0.00	0.00	0.00
1,040.0	0.00	0.00	1,040.0	0.0	0.0	0.0	0.00	0.00	0.00
1,080.0	0.00	0.00	1,080.0	0.0	0.0	0.0	0.00	0.00	0.00
1,120.0	0.00	0.00	1,120.0	0.0	0.0	0.0	0.00	0.00	0.00
1,160.0	0.00	0.00	1,160.0	0.0	0.0	0.0	0.00	0.00	0.00
1,200.0	0.00	0.00	1,200.0	0.0	0.0	0.0	0.00	0.00	0.00
1,240.0	0.00	0.00	1,240.0	0.0	0.0	0.0	0.00	0.00	0.00
1,280.0	0.00	0.00	1,280.0	0.0	0.0	0.0	0.00	0.00	0.00
1,320.0	0.00	0.00	1,320.0	0.0	0.0	0.0	0.00	0.00	0.00
1,360.0	0.00	0.00	1,360.0	0.0	0.0	0.0	0.00	0.00	0.00
1,400.0	0.00	0.00	1,400.0	0.0	0.0	0.0	0.00	0.00	0.00
1,440.0	0.00	0.00	1,440.0	0.0	0.0	0.0	0.00	0.00	0.00
1,480.0	0.00	0.00	1,480.0	0.0	0.0	0.0	0.00	0.00	0.00
1,500.0	0.00	0.00	1,500.0	0.0	0.0	0.0	0.00	0.00	0.00
1,520.0	0.40	43.62	1,520.0	0.1	0.0	0.1	2.00	2.00	0.00
1,560.0	1.20	43.62	1,560.0	0.5	0.4	0.6	2.00	2.00	0.00
1,600.0	2.00	43.62	1,600.0	1.3	1.2	1.7	2.00	2.00	0.00
1,640.0	2.80	43.62	1,639.9	2.5	2.4	3.4	2.00	2.00	0.00
1,680.0	3.60	43.62	1,679.9	4.1	3.9	5.7	2.00	2.00	0.00
1,720.0	4.40	43.62	1,719.8	6.1	5.8	8.4	2.00	2.00	0.00
1,760.0	5.20	43.62	1,759.6	8.5	8.1	11.8	2.00	2.00	0.00
1,800.0	6.00	43.62	1,799.5	11.4	10.8	15.7	2.00	2.00	0.00
1,840.0	6.80	43.62	1,839.2	14.6	13.9	20.2	2.00	2.00	0.00
1,880.0	7.60	43.62	1,878.9	18.2	17.4	25.2	2.00	2.00	0.00
1,920.0	8.40	43.62	1,918.5	22.2	21.2	30.7	2.00	2.00	0.00
1,960.0	9.20	43.62	1,958.0	26.7	25.4	36.9	2.00	2.00	0.00

Database:	Landmark	Local Co-ordinate Reference:	Well Booth 28-23
Company:	BAYSWATER EXPLORATION & PRODUCTION	TVD Reference:	WELL @ 4913.0ft (Original Well Elev)
Project:	SEC.23-T7N-R65W	MD Reference:	WELL @ 4913.0ft (Original Well Elev)
Site:	Booth 10 Pad Sec.23-T7N-R65W	North Reference:	True
Well:	Booth 28-23	Survey Calculation Method:	Minimum Curvature
Wellbore:	Wellbore #1		
Design:	Plan #1 (5-07-12)		

Planned Survey									
Measured Depth (ft)	Inclination (°)	Azimuth (°)	Vertical Depth (ft)	+N/-S (ft)	+E/-W (ft)	Vertical Section (ft)	Dogleg Rate (°/100ft)	Build Rate (°/100ft)	Turn Rate (°/100ft)
2,000.0	10.00	43.62	1,997.5	31.5	30.0	43.5	2.00	2.00	0.00
2,021.6	10.43	43.62	2,018.8	34.3	32.7	47.4	2.00	2.00	0.00
2,040.0	10.43	43.62	2,036.8	36.7	35.0	50.7	0.00	0.00	0.00
2,080.0	10.43	43.62	2,076.2	41.9	40.0	57.9	0.00	0.00	0.00
2,120.0	10.43	43.62	2,115.5	47.2	45.0	65.2	0.00	0.00	0.00
2,160.0	10.43	43.62	2,154.8	52.4	50.0	72.4	0.00	0.00	0.00
2,200.0	10.43	43.62	2,194.2	57.7	55.0	79.7	0.00	0.00	0.00
2,240.0	10.43	43.62	2,233.5	62.9	60.0	86.9	0.00	0.00	0.00
2,280.0	10.43	43.62	2,272.9	68.2	64.9	94.1	0.00	0.00	0.00
2,320.0	10.43	43.62	2,312.2	73.4	69.9	101.4	0.00	0.00	0.00
2,360.0	10.43	43.62	2,351.5	78.6	74.9	108.6	0.00	0.00	0.00
2,400.0	10.43	43.62	2,390.9	83.9	79.9	115.9	0.00	0.00	0.00
2,440.0	10.43	43.62	2,430.2	89.1	84.9	123.1	0.00	0.00	0.00
2,480.0	10.43	43.62	2,469.5	94.4	89.9	130.4	0.00	0.00	0.00
2,520.0	10.43	43.62	2,508.9	99.6	94.9	137.6	0.00	0.00	0.00
2,560.0	10.43	43.62	2,548.2	104.9	99.9	144.8	0.00	0.00	0.00
2,600.0	10.43	43.62	2,587.6	110.1	104.9	152.1	0.00	0.00	0.00
2,640.0	10.43	43.62	2,626.9	115.3	109.9	159.3	0.00	0.00	0.00
2,680.0	10.43	43.62	2,666.2	120.6	114.9	166.6	0.00	0.00	0.00
2,720.0	10.43	43.62	2,705.6	125.8	119.9	173.8	0.00	0.00	0.00
2,760.0	10.43	43.62	2,744.9	131.1	124.9	181.1	0.00	0.00	0.00
2,800.0	10.43	43.62	2,784.3	136.3	129.9	188.3	0.00	0.00	0.00
2,840.0	10.43	43.62	2,823.6	141.6	134.9	195.5	0.00	0.00	0.00
2,880.0	10.43	43.62	2,862.9	146.8	139.9	202.8	0.00	0.00	0.00
2,920.0	10.43	43.62	2,902.3	152.0	144.9	210.0	0.00	0.00	0.00
2,960.0	10.43	43.62	2,941.6	157.3	149.9	217.3	0.00	0.00	0.00
3,000.0	10.43	43.62	2,980.9	162.5	154.9	224.5	0.00	0.00	0.00
3,040.0	10.43	43.62	3,020.3	167.8	159.9	231.8	0.00	0.00	0.00
3,080.0	10.43	43.62	3,059.6	173.0	164.9	239.0	0.00	0.00	0.00
3,120.0	10.43	43.62	3,099.0	178.3	169.9	246.3	0.00	0.00	0.00
3,160.0	10.43	43.62	3,138.3	183.5	174.9	253.5	0.00	0.00	0.00
3,200.0	10.43	43.62	3,177.6	188.8	179.9	260.7	0.00	0.00	0.00
3,240.0	10.43	43.62	3,217.0	194.0	184.9	268.0	0.00	0.00	0.00
3,280.0	10.43	43.62	3,256.3	199.2	189.9	275.2	0.00	0.00	0.00
3,320.0	10.43	43.62	3,295.7	204.5	194.9	282.5	0.00	0.00	0.00
3,360.0	10.43	43.62	3,335.0	209.7	199.9	289.7	0.00	0.00	0.00
3,400.0	10.43	43.62	3,374.3	215.0	204.9	297.0	0.00	0.00	0.00
3,440.0	10.43	43.62	3,413.7	220.2	209.9	304.2	0.00	0.00	0.00
3,480.0	10.43	43.62	3,453.0	225.5	214.9	311.4	0.00	0.00	0.00
3,520.0	10.43	43.62	3,492.4	230.7	219.9	318.7	0.00	0.00	0.00
3,560.0	10.43	43.62	3,531.7	235.9	224.9	325.9	0.00	0.00	0.00
3,600.0	10.43	43.62	3,571.0	241.2	229.9	333.2	0.00	0.00	0.00
3,640.0	10.43	43.62	3,610.4	246.4	234.8	340.4	0.00	0.00	0.00
3,680.0	10.43	43.62	3,649.7	251.7	239.8	347.7	0.00	0.00	0.00
3,720.0	10.43	43.62	3,689.0	256.9	244.8	354.9	0.00	0.00	0.00
3,760.0	10.43	43.62	3,728.4	262.2	249.8	362.1	0.00	0.00	0.00
3,800.0	10.43	43.62	3,767.7	267.4	254.8	369.4	0.00	0.00	0.00
3,813.7	10.43	43.62	3,781.2	269.2	256.6	371.9	0.00	0.00	0.00
3,840.0	9.91	43.62	3,807.1	272.6	259.8	376.5	2.00	-2.00	0.00
3,866.3	9.38	43.62	3,833.0	275.8	262.8	380.9	2.00	-2.00	0.00
PARKMAN									
3,880.0	9.11	43.62	3,846.5	277.3	264.3	383.1	2.00	-2.00	0.00
3,920.0	8.31	43.62	3,886.1	281.7	268.5	389.2	2.00	-2.00	0.00

Database:	Landmark	Local Co-ordinate Reference:	Well Booth 28-23
Company:	BAYSWATER EXPLORATION & PRODUCTION	TVD Reference:	WELL @ 4913.0ft (Original Well Elev)
Project:	SEC.23-T7N-R65W	MD Reference:	WELL @ 4913.0ft (Original Well Elev)
Site:	Booth 10 Pad Sec.23-T7N-R65W	North Reference:	True
Well:	Booth 28-23	Survey Calculation Method:	Minimum Curvature
Wellbore:	Wellbore #1		
Design:	Plan #1 (5-07-12)		

Planned Survey									
Measured Depth (ft)	Inclination (°)	Azimuth (°)	Vertical Depth (ft)	+N/-S (ft)	+E/-W (ft)	Vertical Section (ft)	Dogleg Rate (°/100ft)	Build Rate (°/100ft)	Turn Rate (°/100ft)
3,960.0	7.51	43.62	3,925.7	285.7	272.3	394.7	2.00	-2.00	0.00
4,000.0	6.71	43.62	3,965.4	289.3	275.7	399.6	2.00	-2.00	0.00
4,040.0	5.91	43.62	4,005.1	292.5	278.7	404.0	2.00	-2.00	0.00
4,080.0	5.11	43.62	4,045.0	295.3	281.4	407.9	2.00	-2.00	0.00
4,120.0	4.31	43.62	4,084.8	297.6	283.6	411.1	2.00	-2.00	0.00
4,160.0	3.51	43.62	4,124.7	299.6	285.5	413.9	2.00	-2.00	0.00
4,200.0	2.71	43.62	4,164.7	301.2	287.0	416.0	2.00	-2.00	0.00
4,240.0	1.91	43.62	4,204.6	302.3	288.1	417.6	2.00	-2.00	0.00
4,280.0	1.11	43.62	4,244.6	303.1	288.9	418.7	2.00	-2.00	0.00
4,320.0	0.31	43.62	4,284.6	303.5	289.2	419.2	2.00	-2.00	0.00
4,335.4	0.00	0.00	4,300.0	303.5	289.2	419.2	2.00	-2.00	-283.59
TARGET BHL 75'FNL, 2623'FWL									
4,360.0	0.00	0.00	4,324.6	303.5	289.2	419.2	0.00	0.00	0.00
4,400.0	0.00	0.00	4,364.6	303.5	289.2	419.2	0.00	0.00	0.00
4,440.0	0.00	0.00	4,404.6	303.5	289.2	419.2	0.00	0.00	0.00
4,480.0	0.00	0.00	4,444.6	303.5	289.2	419.2	0.00	0.00	0.00
4,520.0	0.00	0.00	4,484.6	303.5	289.2	419.2	0.00	0.00	0.00
4,560.0	0.00	0.00	4,524.6	303.5	289.2	419.2	0.00	0.00	0.00
4,600.0	0.00	0.00	4,564.6	303.5	289.2	419.2	0.00	0.00	0.00
4,623.4	0.00	0.00	4,588.0	303.5	289.2	419.2	0.00	0.00	0.00
SUSSEX									
4,640.0	0.00	0.00	4,604.6	303.5	289.2	419.2	0.00	0.00	0.00
4,680.0	0.00	0.00	4,644.6	303.5	289.2	419.2	0.00	0.00	0.00
4,720.0	0.00	0.00	4,684.6	303.5	289.2	419.2	0.00	0.00	0.00
4,760.0	0.00	0.00	4,724.6	303.5	289.2	419.2	0.00	0.00	0.00
4,800.0	0.00	0.00	4,764.6	303.5	289.2	419.2	0.00	0.00	0.00
4,840.0	0.00	0.00	4,804.6	303.5	289.2	419.2	0.00	0.00	0.00
4,880.0	0.00	0.00	4,844.6	303.5	289.2	419.2	0.00	0.00	0.00
4,920.0	0.00	0.00	4,884.6	303.5	289.2	419.2	0.00	0.00	0.00
4,960.0	0.00	0.00	4,924.6	303.5	289.2	419.2	0.00	0.00	0.00
5,000.0	0.00	0.00	4,964.6	303.5	289.2	419.2	0.00	0.00	0.00
5,040.0	0.00	0.00	5,004.6	303.5	289.2	419.2	0.00	0.00	0.00
5,080.0	0.00	0.00	5,044.6	303.5	289.2	419.2	0.00	0.00	0.00
5,120.0	0.00	0.00	5,084.6	303.5	289.2	419.2	0.00	0.00	0.00
5,160.0	0.00	0.00	5,124.6	303.5	289.2	419.2	0.00	0.00	0.00
5,173.4	0.00	0.00	5,138.0	303.5	289.2	419.2	0.00	0.00	0.00
SHANNON									
5,200.0	0.00	0.00	5,164.6	303.5	289.2	419.2	0.00	0.00	0.00
5,240.0	0.00	0.00	5,204.6	303.5	289.2	419.2	0.00	0.00	0.00
5,280.0	0.00	0.00	5,244.6	303.5	289.2	419.2	0.00	0.00	0.00
5,320.0	0.00	0.00	5,284.6	303.5	289.2	419.2	0.00	0.00	0.00
5,360.0	0.00	0.00	5,324.6	303.5	289.2	419.2	0.00	0.00	0.00
5,400.0	0.00	0.00	5,364.6	303.5	289.2	419.2	0.00	0.00	0.00
5,440.0	0.00	0.00	5,404.6	303.5	289.2	419.2	0.00	0.00	0.00
5,480.0	0.00	0.00	5,444.6	303.5	289.2	419.2	0.00	0.00	0.00
5,520.0	0.00	0.00	5,484.6	303.5	289.2	419.2	0.00	0.00	0.00
5,560.0	0.00	0.00	5,524.6	303.5	289.2	419.2	0.00	0.00	0.00
5,600.0	0.00	0.00	5,564.6	303.5	289.2	419.2	0.00	0.00	0.00
5,640.0	0.00	0.00	5,604.6	303.5	289.2	419.2	0.00	0.00	0.00
5,680.0	0.00	0.00	5,644.6	303.5	289.2	419.2	0.00	0.00	0.00
5,720.0	0.00	0.00	5,684.6	303.5	289.2	419.2	0.00	0.00	0.00
5,760.0	0.00	0.00	5,724.6	303.5	289.2	419.2	0.00	0.00	0.00
5,800.0	0.00	0.00	5,764.6	303.5	289.2	419.2	0.00	0.00	0.00

Database:	Landmark	Local Co-ordinate Reference:	Well Booth 28-23
Company:	BAYSWATER EXPLORATION & PRODUCTION	TVD Reference:	WELL @ 4913.0ft (Original Well Elev)
Project:	SEC.23-T7N-R65W	MD Reference:	WELL @ 4913.0ft (Original Well Elev)
Site:	Booth 10 Pad Sec.23-T7N-R65W	North Reference:	True
Well:	Booth 28-23	Survey Calculation Method:	Minimum Curvature
Wellbore:	Wellbore #1		
Design:	Plan #1 (5-07-12)		

Planned Survey									
Measured Depth (ft)	Inclination (°)	Azimuth (°)	Vertical Depth (ft)	+N/-S (ft)	+E/-W (ft)	Vertical Section (ft)	Dogleg Rate (°/100ft)	Build Rate (°/100ft)	Turn Rate (°/100ft)
5,840.0	0.00	0.00	5,804.6	303.5	289.2	419.2	0.00	0.00	0.00
5,880.0	0.00	0.00	5,844.6	303.5	289.2	419.2	0.00	0.00	0.00
5,920.0	0.00	0.00	5,884.6	303.5	289.2	419.2	0.00	0.00	0.00
5,960.0	0.00	0.00	5,924.6	303.5	289.2	419.2	0.00	0.00	0.00
6,000.0	0.00	0.00	5,964.6	303.5	289.2	419.2	0.00	0.00	0.00
6,040.0	0.00	0.00	6,004.6	303.5	289.2	419.2	0.00	0.00	0.00
6,080.0	0.00	0.00	6,044.6	303.5	289.2	419.2	0.00	0.00	0.00
6,120.0	0.00	0.00	6,084.6	303.5	289.2	419.2	0.00	0.00	0.00
6,160.0	0.00	0.00	6,124.6	303.5	289.2	419.2	0.00	0.00	0.00
6,200.0	0.00	0.00	6,164.6	303.5	289.2	419.2	0.00	0.00	0.00
6,240.0	0.00	0.00	6,204.6	303.5	289.2	419.2	0.00	0.00	0.00
6,280.0	0.00	0.00	6,244.6	303.5	289.2	419.2	0.00	0.00	0.00
6,320.0	0.00	0.00	6,284.6	303.5	289.2	419.2	0.00	0.00	0.00
6,360.0	0.00	0.00	6,324.6	303.5	289.2	419.2	0.00	0.00	0.00
6,400.0	0.00	0.00	6,364.6	303.5	289.2	419.2	0.00	0.00	0.00
6,440.0	0.00	0.00	6,404.6	303.5	289.2	419.2	0.00	0.00	0.00
6,480.0	0.00	0.00	6,444.6	303.5	289.2	419.2	0.00	0.00	0.00
6,520.0	0.00	0.00	6,484.6	303.5	289.2	419.2	0.00	0.00	0.00
6,560.0	0.00	0.00	6,524.6	303.5	289.2	419.2	0.00	0.00	0.00
6,600.0	0.00	0.00	6,564.6	303.5	289.2	419.2	0.00	0.00	0.00
6,640.0	0.00	0.00	6,604.6	303.5	289.2	419.2	0.00	0.00	0.00
6,680.0	0.00	0.00	6,644.6	303.5	289.2	419.2	0.00	0.00	0.00
6,720.0	0.00	0.00	6,684.6	303.5	289.2	419.2	0.00	0.00	0.00
6,760.0	0.00	0.00	6,724.6	303.5	289.2	419.2	0.00	0.00	0.00
6,800.0	0.00	0.00	6,764.6	303.5	289.2	419.2	0.00	0.00	0.00
6,840.0	0.00	0.00	6,804.6	303.5	289.2	419.2	0.00	0.00	0.00
6,880.0	0.00	0.00	6,844.6	303.5	289.2	419.2	0.00	0.00	0.00
6,920.0	0.00	0.00	6,884.6	303.5	289.2	419.2	0.00	0.00	0.00
6,960.0	0.00	0.00	6,924.6	303.5	289.2	419.2	0.00	0.00	0.00
6,973.4	0.00	0.00	6,938.0	303.5	289.2	419.2	0.00	0.00	0.00
NIOBRARA - TARGET CIRCLE 75'FNL & 2623'FWL									
7,000.0	0.00	0.00	6,964.6	303.5	289.2	419.2	0.00	0.00	0.00
7,040.0	0.00	0.00	7,004.6	303.5	289.2	419.2	0.00	0.00	0.00
7,080.0	0.00	0.00	7,044.6	303.5	289.2	419.2	0.00	0.00	0.00
7,120.0	0.00	0.00	7,084.6	303.5	289.2	419.2	0.00	0.00	0.00
7,160.0	0.00	0.00	7,124.6	303.5	289.2	419.2	0.00	0.00	0.00
7,200.0	0.00	0.00	7,164.6	303.5	289.2	419.2	0.00	0.00	0.00
7,225.4	0.00	0.00	7,190.0	303.5	289.2	419.2	0.00	0.00	0.00
FT. HAYS									
7,240.0	0.00	0.00	7,204.6	303.5	289.2	419.2	0.00	0.00	0.00
7,269.4	0.00	0.00	7,234.0	303.5	289.2	419.2	0.00	0.00	0.00
CODELL									
7,280.0	0.00	0.00	7,244.6	303.5	289.2	419.2	0.00	0.00	0.00
7,320.0	0.00	0.00	7,284.6	303.5	289.2	419.2	0.00	0.00	0.00
7,321.4	0.00	0.00	7,286.0	303.5	289.2	419.2	0.00	0.00	0.00
GREENHORN									
7,360.0	0.00	0.00	7,324.6	303.5	289.2	419.2	0.00	0.00	0.00
7,400.0	0.00	0.00	7,364.6	303.5	289.2	419.2	0.00	0.00	0.00
7,403.4	0.00	0.00	7,368.0	303.5	289.2	419.2	0.00	0.00	0.00
GRANEROS									
7,420.4	0.00	0.00	7,385.0	303.5	289.2	419.2	0.00	0.00	0.00
HARD LINES 75'N & 75'E OF TARGET BHL									

Database:	Landmark	Local Co-ordinate Reference:	Well Booth 28-23
Company:	BAYSWATER EXPLORATION & PRODUCTION	TVD Reference:	WELL @ 4913.0ft (Original Well Elev)
Project:	SEC.23-T7N-R65W	MD Reference:	WELL @ 4913.0ft (Original Well Elev)
Site:	Booth 10 Pad Sec.23-T7N-R65W	North Reference:	True
Well:	Booth 28-23	Survey Calculation Method:	Minimum Curvature
Wellbore:	Wellbore #1		
Design:	Plan #1 (5-07-12)		

Targets									
Target Name	- hit/miss target	Dip Angle (°)	Dip Dir. (°)	TVD (ft)	+N/-S (ft)	+E/-W (ft)	Northing (ft)	Easting (ft)	
	- Shape								Latitude Longitude
TARGET BHL 75'FNL	- plan hits target center	0.00	0.00	4,300.0	303.5	289.2	1,450,257.68	3,241,626.43	40.566104 -104.630288
	- Point								
HARD LINES 75'N & S	- plan misses target center by 106.1ft at 7420.4ft MD (7385.0 TVD, 303.5 N, 289.2 E)	0.00	0.00	7,385.0	378.5	364.2	1,450,333.42	3,241,700.66	40.566310 -104.630018
	- Polygon								
	Point 1			7,385.0	0.0	0.0	1,450,333.42	3,241,700.66	
	Point 2			7,385.0	-200.0	0.0	1,450,133.43	3,241,702.62	
	Point 3			7,385.0	0.0	0.0	1,450,333.42	3,241,700.66	
	Point 4			7,385.0	0.0	-200.0	1,450,331.46	3,241,500.67	
TARGET CIRCLE 75'	- plan hits target center	0.00	0.00	6,938.0	303.5	289.2	1,450,257.68	3,241,626.43	40.566104 -104.630288
	- Circle (radius 75.0)								

Casing Points					
Measured Depth (ft)	Vertical Depth (ft)	Name	Casing Diameter (")	Hole Diameter (")	
645.0	645.0	8 5/8"	8-5/8	12-1/4	

Formations						
Measured Depth (ft)	Vertical Depth (ft)	Name	Lithology	Dip (°)	Dip Direction (°)	
3,866.3	3,833.0	PARKMAN		0.00		
4,623.4	4,588.0	SUSSEX		0.00		
5,173.4	5,138.0	SHANNON		0.00		
6,973.4	6,938.0	NIOBRARA		0.00		
7,225.4	7,190.0	FT. HAYS		0.00		
7,269.4	7,234.0	CODELL		0.00		
7,321.4	7,286.0	GREENHORN		0.00		
7,403.4	7,368.0	GRANEROS		0.00		



BAYSWATER EXPLORATION & PRODUCTION

SEC.23-T7N-R65W

Booth 10 Pad Sec.23-T7N-R65W

Booth 28-23

Wellbore #1

Plan #1 (5-07-12)

Anticollision Report

10 May, 2012

Company:	BAYSWATER EXPLORATION & PRODUCTION	Local Co-ordinate Reference:	Well Booth 28-23
Project:	SEC.23-T7N-R65W	TVD Reference:	WELL @ 4913.0ft (Original Well Elev)
Reference Site:	Booth 10 Pad Sec.23-T7N-R65W	MD Reference:	WELL @ 4913.0ft (Original Well Elev)
Site Error:	0.0ft	North Reference:	True
Reference Well:	Booth 28-23	Survey Calculation Method:	Minimum Curvature
Well Error:	0.0ft	Output errors are at	2.00 sigma
Reference Wellbore	Wellbore #1	Database:	Landmark
Reference Design:	Plan #1 (5-07-12)	Offset TVD Reference:	Offset Datum

Reference	Plan #1 (5-07-12)		
Filter type:	NO GLOBAL FILTER: Using user defined selection & filtering criteria		
Interpolation Method:	MD Interval 100.0ft	Error Model:	ISCWSA
Depth Range:	Unlimited	Scan Method:	Closest Approach 3D
Results Limited by:	Maximum center-center distance of 10,000.0ft	Error Surface:	Elliptical Conic
Warning Levels Evaluated at:	2.00 Sigma		

Survey Tool Program	Date 5/7/2012			
From (ft)	To (ft)	Survey (Wellbore)	Tool Name	Description
0.0	7,420.4	Plan #1 (5-07-12) (Wellbore #1)	MWD	MWD - Standard

Summary						
Site Name	Reference Measured Depth (ft)	Offset Measured Depth (ft)	Distance Between Centres (ft)	Between Ellipses (ft)	Separation Factor	Warning
Offset Well - Wellbore - Design						
Booth 10 Pad Sec.23-T7N-R65W						
Booth 29-23 - Wellbore #1 - Plan #1 (5-07-12)	292.7	292.7	15.9	14.8	14.707	CC
Booth 29-23 - Wellbore #1 - Plan #1 (5-07-12)	300.0	300.0	15.9	14.8	14.288	ES
Booth 29-23 - Wellbore #1 - Plan #1 (5-07-12)	500.0	499.4	20.9	18.9	10.301	SF

Offset Design Booth 10 Pad Sec.23-T7N-R65W - Booth 29-23 - Wellbore #1 - Plan #1 (5-07-12)													Offset Site Error:	0.0 ft
Survey Program: 0-MWD													Offset Well Error:	0.0 ft
Reference	Offset	Semi Major Axis		Distance		Minimum Separation		Separation Factor	Warning					
Measured Depth (ft)	Vertical Depth (ft)	Measured Depth (ft)	Vertical Depth (ft)	Reference (ft)	Offset (ft)	Highside Toolface (°)	Offset Wellbore Centre +N/-S (ft)	+E/-W (ft)	Between Centres (ft)	Between Ellipses (ft)	Minimum Separation (ft)	Separation Factor		
0.0	0.0	0.0	0.0	0.0	0.0	159.60	-14.9	5.6	15.9	15.9	0.00	N/A		
100.0	100.0	100.0	100.0	0.1	0.1	159.60	-14.9	5.6	15.9	15.7	0.22	70.923		
200.0	200.0	200.0	200.0	0.3	0.3	159.60	-14.9	5.6	15.9	15.3	0.67	23.641		
292.7	292.7	292.7	292.7	0.5	0.5	165.00	-15.3	4.1	15.9	14.8	1.08	14.707	CC	
300.0	300.0	300.0	300.0	0.6	0.5	165.89	-15.4	3.9	15.9	14.8	1.11	14.288	ES	
400.0	400.0	399.8	399.6	0.8	0.8	-176.01	-16.7	-1.2	16.8	15.2	1.55	10.797		
500.0	500.0	499.4	498.9	1.0	1.0	-153.05	-18.6	-9.5	20.9	18.9	2.03	10.301	SF	
600.0	600.0	598.8	597.6	1.2	1.3	-132.35	-18.6	-20.5	27.8	25.2	2.53	10.997		
700.0	700.0	697.5	695.4	1.5	1.6	-115.90	-16.5	-34.0	38.0	35.0	3.03	12.534		
800.0	800.0	795.3	791.8	1.7	1.9	-103.76	-12.2	-49.9	52.0	48.5	3.56	14.612		
900.0	900.0	892.0	886.6	1.9	2.3	-94.94	-5.9	-68.1	69.7	65.6	4.10	16.976		
1,000.0	1,000.0	989.7	982.1	2.1	2.7	-89.08	1.4	-87.5	89.4	84.7	4.67	19.155		
1,100.0	1,100.0	1,087.5	1,077.5	2.4	3.2	-85.35	8.7	-107.0	109.7	104.4	5.23	20.953		
1,200.0	1,200.0	1,185.2	1,173.0	2.6	3.6	-82.79	16.0	-126.4	130.3	124.5	5.81	22.440		
1,300.0	1,300.0	1,282.9	1,268.5	2.8	4.0	-80.94	23.3	-145.9	151.1	144.7	6.38	23.678		
1,400.0	1,400.0	1,380.6	1,364.0	3.0	4.5	-79.53	30.6	-165.3	172.0	165.0	6.96	24.720		
1,500.0	1,500.0	1,478.3	1,459.5	3.3	4.9	-78.42	37.9	-184.8	192.9	185.4	7.53	25.608		
1,600.0	1,600.0	1,575.9	1,554.8	3.5	5.4	-121.18	45.1	-204.2	214.8	207.7	7.16	29.986		
1,700.0	1,699.8	1,673.0	1,649.7	3.7	5.8	-121.11	52.4	-223.5	238.5	230.9	7.62	31.287		
1,800.0	1,799.5	1,769.6	1,744.1	3.9	6.3	-121.61	59.6	-242.8	264.0	255.9	8.08	32.658		
1,900.0	1,898.7	1,865.6	1,837.9	4.2	6.7	-122.52	66.7	-261.9	291.3	282.8	8.55	34.083		
2,000.0	1,997.5	1,960.8	1,930.9	4.4	7.2	-123.68	73.9	-280.8	320.7	311.7	9.02	35.544		
2,100.0	2,095.8	2,055.4	2,023.4	4.7	7.6	-125.30	80.9	-299.6	351.6	342.0	9.53	36.876		

CC - Min centre to center distance or convergent point, SF - min separation factor, ES - min ellipse separation

Company:	BAYSWATER EXPLORATION & PRODUCTION	Local Co-ordinate Reference:	Well Booth 28-23
Project:	SEC.23-T7N-R65W	TVD Reference:	WELL @ 4913.0ft (Original Well Elev)
Reference Site:	Booth 10 Pad Sec.23-T7N-R65W	MD Reference:	WELL @ 4913.0ft (Original Well Elev)
Site Error:	0.0ft	North Reference:	True
Reference Well:	Booth 28-23	Survey Calculation Method:	Minimum Curvature
Well Error:	0.0ft	Output errors are at	2.00 sigma
Reference Wellbore	Wellbore #1	Database:	Landmark
Reference Design:	Plan #1 (5-07-12)	Offset TVD Reference:	Offset Datum

Offset Design Booth 10 Pad Sec.23-T7N-R65W - Booth 29-23 - Wellbore #1 - Plan #1 (5-07-12)													Offset Site Error:	0.0 ft
Survey Program: 0-MWD													Offset Well Error:	0.0 ft
Measured Depth (ft)	Vertical Depth (ft)	Measured Depth (ft)	Vertical Depth (ft)	Reference	Offset	Semi Major Axis	Highside Toolface (°)	Offset Wellbore Centre +N/-S (ft)	Offset Wellbore Centre +E/-W (ft)	Between Centres (ft)	Between Ellipses (ft)	Minimum Separation (ft)	Separation Factor	Warning
2,200.0	2,194.2	2,150.0	2,115.8	5.0	8.0	-126.77		88.0	-318.5	382.8	372.7	10.07	38.015	
2,300.0	2,292.5	2,244.6	2,208.2	5.3	8.5	-128.01		95.0	-337.3	414.1	403.5	10.62	39.009	
2,400.0	2,390.9	2,339.2	2,300.7	5.6	8.9	-129.08		102.1	-356.1	445.7	434.5	11.17	39.883	
2,500.0	2,489.2	2,433.8	2,393.1	6.0	9.4	-130.01		109.1	-374.9	477.3	465.6	11.74	40.656	
2,600.0	2,587.6	2,528.4	2,485.5	6.3	9.8	-130.83		116.2	-393.8	509.1	496.8	12.31	41.345	
2,700.0	2,685.9	2,623.0	2,578.0	6.7	10.2	-131.55		123.3	-412.6	540.9	528.0	12.89	41.961	
2,800.0	2,784.3	2,717.5	2,670.4	7.0	10.7	-132.18		130.3	-431.4	572.8	559.3	13.47	42.515	
2,900.0	2,882.6	2,812.1	2,762.8	7.4	11.1	-132.76		137.4	-450.2	604.8	590.7	14.06	43.017	
3,000.0	2,980.9	2,906.7	2,855.2	7.8	11.6	-133.27		144.4	-469.1	636.8	622.1	14.65	43.473	
3,100.0	3,079.3	3,001.3	2,947.7	8.1	12.0	-133.74		151.5	-487.9	668.8	653.6	15.24	43.888	
3,200.0	3,177.6	3,095.9	3,040.1	8.5	12.5	-134.16		158.5	-506.7	700.9	685.1	15.83	44.269	
3,300.0	3,276.0	3,190.5	3,132.5	8.9	12.9	-134.55		165.6	-525.6	733.0	716.6	16.43	44.618	
3,400.0	3,374.3	3,285.1	3,225.0	9.3	13.3	-134.90		172.7	-544.4	765.2	748.1	17.03	44.941	
3,500.0	3,472.7	3,379.7	3,317.4	9.6	13.8	-135.23		179.7	-563.2	797.3	779.7	17.62	45.239	
3,600.0	3,571.0	3,474.3	3,409.8	10.0	14.2	-135.53		186.8	-582.0	829.5	811.3	18.23	45.515	
3,700.0	3,669.4	3,568.9	3,502.3	10.4	14.7	-135.80		193.8	-600.9	861.7	842.9	18.83	45.772	
3,800.0	3,767.7	3,663.5	3,594.7	10.8	15.1	-136.06		200.9	-619.7	894.0	874.5	19.43	46.011	
3,900.0	3,866.3	3,758.4	3,687.4	11.1	15.6	-136.63		208.0	-638.6	925.3	905.2	20.09	46.065	
4,000.0	3,965.4	3,854.1	3,781.0	11.4	16.0	-137.07		215.1	-657.6	954.3	933.6	20.70	46.105	
4,100.0	4,064.9	3,950.5	3,875.1	11.6	16.5	-137.32		222.3	-676.8	980.8	959.5	21.27	46.100	
4,200.0	4,164.7	4,047.4	3,969.9	11.8	16.9	-137.40		229.5	-696.1	1,004.8	983.0	21.81	46.061	
4,300.0	4,264.6	4,144.9	4,065.1	12.0	17.4	-137.31		236.8	-715.5	1,026.4	1,004.0	22.31	45.995	
4,400.0	4,364.6	4,242.6	4,160.6	12.2	17.8	-93.32		244.1	-734.9	1,046.0	1,023.2	22.77	45.945	
4,500.0	4,464.6	4,340.3	4,256.0	12.3	18.3	-92.86		251.4	-754.4	1,065.5	1,042.3	23.22	45.887	
4,600.0	4,564.6	4,438.0	4,351.5	12.5	18.7	-92.41		258.7	-773.8	1,085.1	1,061.5	23.68	45.834	
4,700.0	4,664.6	4,535.7	4,447.0	12.7	19.2	-91.99		266.0	-793.3	1,104.8	1,080.7	24.13	45.785	
4,800.0	4,764.6	4,633.4	4,542.5	12.8	19.7	-91.57		273.3	-812.7	1,124.5	1,099.9	24.58	45.741	
4,900.0	4,864.6	4,731.1	4,638.0	13.0	20.1	-91.17		280.5	-832.2	1,144.3	1,119.3	25.04	45.701	
5,000.0	4,964.6	4,828.9	4,733.4	13.2	20.6	-90.79		287.8	-851.6	1,164.1	1,138.6	25.49	45.663	
5,100.0	5,064.6	4,926.6	4,828.9	13.4	21.0	-90.41		295.1	-871.1	1,184.0	1,158.1	25.95	45.629	
5,200.0	5,164.6	5,024.3	4,924.4	13.6	21.5	-90.05		302.4	-890.5	1,204.0	1,177.5	26.40	45.598	
5,300.0	5,264.6	5,122.0	5,019.9	13.7	21.9	-89.70		309.7	-910.0	1,223.9	1,197.1	26.86	45.569	
5,400.0	5,364.6	5,236.9	5,132.3	13.9	22.4	-89.31		318.2	-932.6	1,243.8	1,216.4	27.34	45.494	
5,500.0	5,464.6	5,404.6	5,297.5	14.1	22.9	-88.87		328.1	-959.2	1,259.8	1,231.9	27.88	45.184	
5,600.0	5,564.6	5,575.2	5,467.0	14.3	23.3	-88.58		334.8	-976.9	1,270.2	1,241.9	28.39	44.743	
5,700.0	5,664.6	5,747.4	5,638.9	14.5	23.6	-88.45		337.9	-985.2	1,275.1	1,246.2	28.87	44.170	
5,800.0	5,764.6	5,873.1	5,764.6	14.7	23.7	-88.44		338.1	-985.8	1,275.5	1,246.2	29.26	43.584	
5,900.0	5,864.6	5,973.1	5,864.6	14.9	23.8	-88.44		338.1	-985.8	1,275.5	1,245.8	29.63	43.048	
6,000.0	5,964.6	6,073.1	5,964.6	15.1	24.0	-88.44		338.1	-985.8	1,275.5	1,245.5	30.00	42.520	
6,100.0	6,064.6	6,173.1	6,064.6	15.3	24.1	-88.44		338.1	-985.8	1,275.5	1,245.1	30.37	42.002	
6,200.0	6,164.6	6,273.1	6,164.6	15.4	24.2	-88.44		338.1	-985.8	1,275.5	1,244.7	30.74	41.493	
6,300.0	6,264.6	6,373.1	6,264.6	15.6	24.3	-88.44		338.1	-985.8	1,275.5	1,244.3	31.11	40.994	
6,400.0	6,364.6	6,473.1	6,364.6	15.8	24.4	-88.44		338.1	-985.8	1,275.5	1,244.0	31.49	40.504	
6,500.0	6,464.6	6,573.1	6,464.6	16.0	24.6	-88.44		338.1	-985.8	1,275.5	1,243.6	31.87	40.024	
6,600.0	6,564.6	6,673.1	6,564.6	16.2	24.7	-88.44		338.1	-985.8	1,275.5	1,243.2	32.25	39.553	
6,700.0	6,664.6	6,773.1	6,664.6	16.4	24.8	-88.44		338.1	-985.8	1,275.5	1,242.8	32.63	39.091	
6,800.0	6,764.6	6,873.1	6,764.6	16.6	24.9	-88.44		338.1	-985.8	1,275.5	1,242.4	33.01	38.637	
6,900.0	6,864.6	6,973.1	6,864.6	16.8	25.1	-88.44		338.1	-985.8	1,275.5	1,242.1	33.40	38.192	
7,000.0	6,964.6	7,073.1	6,964.6	17.0	25.2	-88.44		338.1	-985.8	1,275.5	1,241.7	33.78	37.755	
7,100.0	7,064.6	7,173.1	7,064.6	17.2	25.3	-88.44		338.1	-985.8	1,275.5	1,241.3	34.17	37.327	
7,200.0	7,164.6	7,273.1	7,164.6	17.4	25.5	-88.44		338.1	-985.8	1,275.5	1,240.9	34.56	36.906	

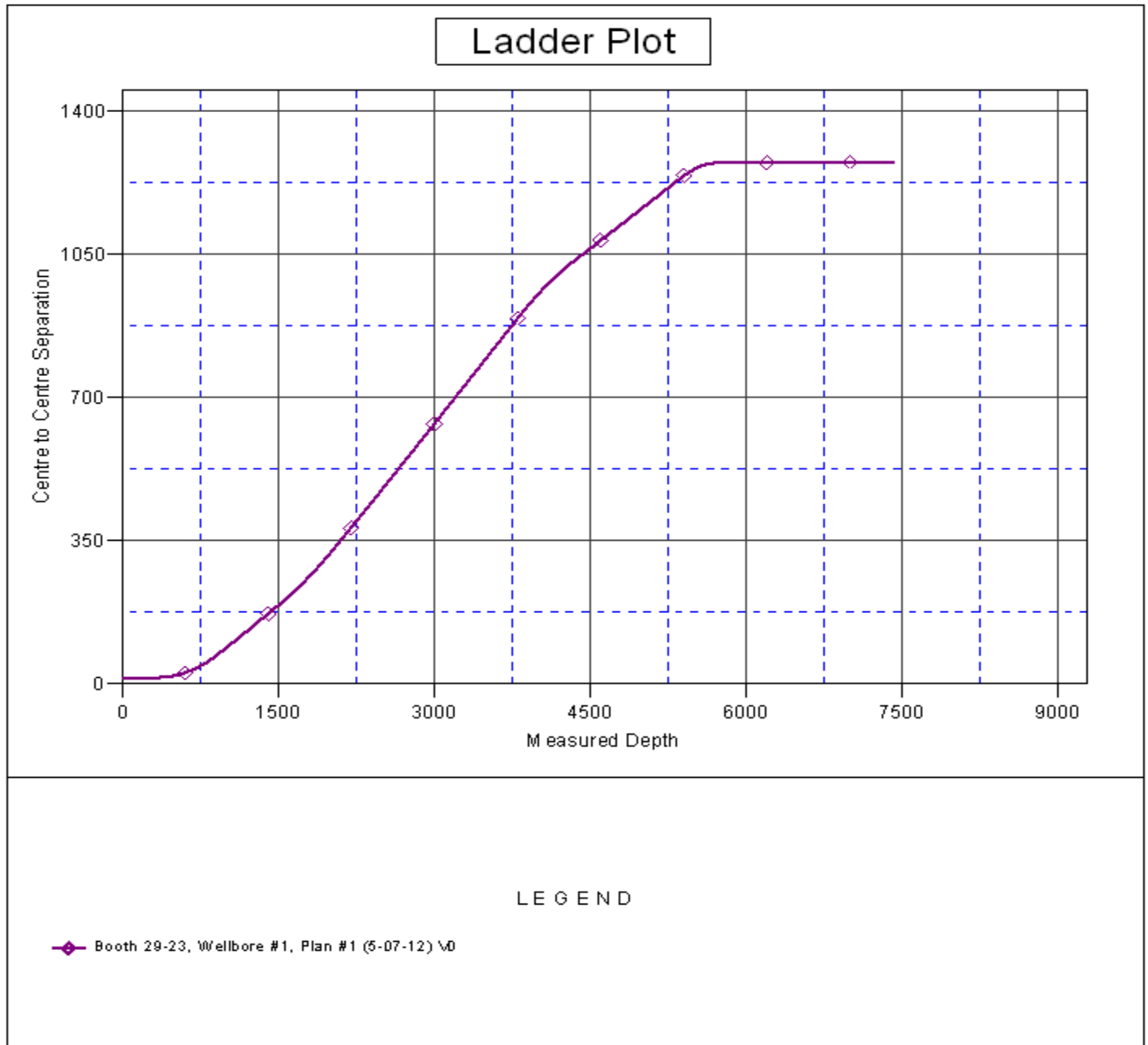
CC - Min centre to center distance or convergent point, SF - min separation factor, ES - min ellipse separation

Company:	BAYSWATER EXPLORATION & PRODUCTION	Local Co-ordinate Reference:	Well Booth 28-23
Project:	SEC.23-T7N-R65W	TVD Reference:	WELL @ 4913.0ft (Original Well Elev)
Reference Site:	Booth 10 Pad Sec.23-T7N-R65W	MD Reference:	WELL @ 4913.0ft (Original Well Elev)
Site Error:	0.0ft	North Reference:	True
Reference Well:	Booth 28-23	Survey Calculation Method:	Minimum Curvature
Well Error:	0.0ft	Output errors are at	2.00 sigma
Reference Wellbore	Wellbore #1	Database:	Landmark
Reference Design:	Plan #1 (5-07-12)	Offset TVD Reference:	Offset Datum

Offset Design Booth 10 Pad Sec.23-T7N-R65W - Booth 29-23 - Wellbore #1 - Plan #1 (5-07-12)												Offset Site Error:	0.0 ft
Survey Program: 0-MWD												Offset Well Error:	0.0 ft
Reference	Offset	Semi Major Axis		Distance									
Measured Depth (ft)	Vertical Depth (ft)	Measured Depth (ft)	Vertical Depth (ft)	Reference (ft)	Offset (ft)	Highside Toolface (°)	Offset Wellbore Centre +N/-S (ft)	+E/-W (ft)	Between Centres (ft)	Between Ellipses (ft)	Minimum Separation (ft)	Separation Factor	Warning
7,300.0	7,264.6	7,373.1	7,264.6	17.6	25.6	-88.44	338.1	-985.8	1,275.5	1,240.5	34.95	36.494	
7,400.0	7,364.6	7,473.1	7,364.6	17.8	25.8	-88.44	338.1	-985.8	1,275.5	1,240.1	35.34	36.089	
7,420.4	7,385.0	7,493.5	7,385.0	17.9	25.8	-88.44	338.1	-985.8	1,275.5	1,240.0	35.42	36.008	

Company:	BAYSWATER EXPLORATION & PRODUCTION	Local Co-ordinate Reference:	Well Booth 28-23
Project:	SEC.23-T7N-R65W	TVD Reference:	WELL @ 4913.0ft (Original Well Elev)
Reference Site:	Booth 10 Pad Sec.23-T7N-R65W	MD Reference:	WELL @ 4913.0ft (Original Well Elev)
Site Error:	0.0ft	North Reference:	True
Reference Well:	Booth 28-23	Survey Calculation Method:	Minimum Curvature
Well Error:	0.0ft	Output errors are at	2.00 sigma
Reference Wellbore	Wellbore #1	Database:	Landmark
Reference Design:	Plan #1 (5-07-12)	Offset TVD Reference:	Offset Datum

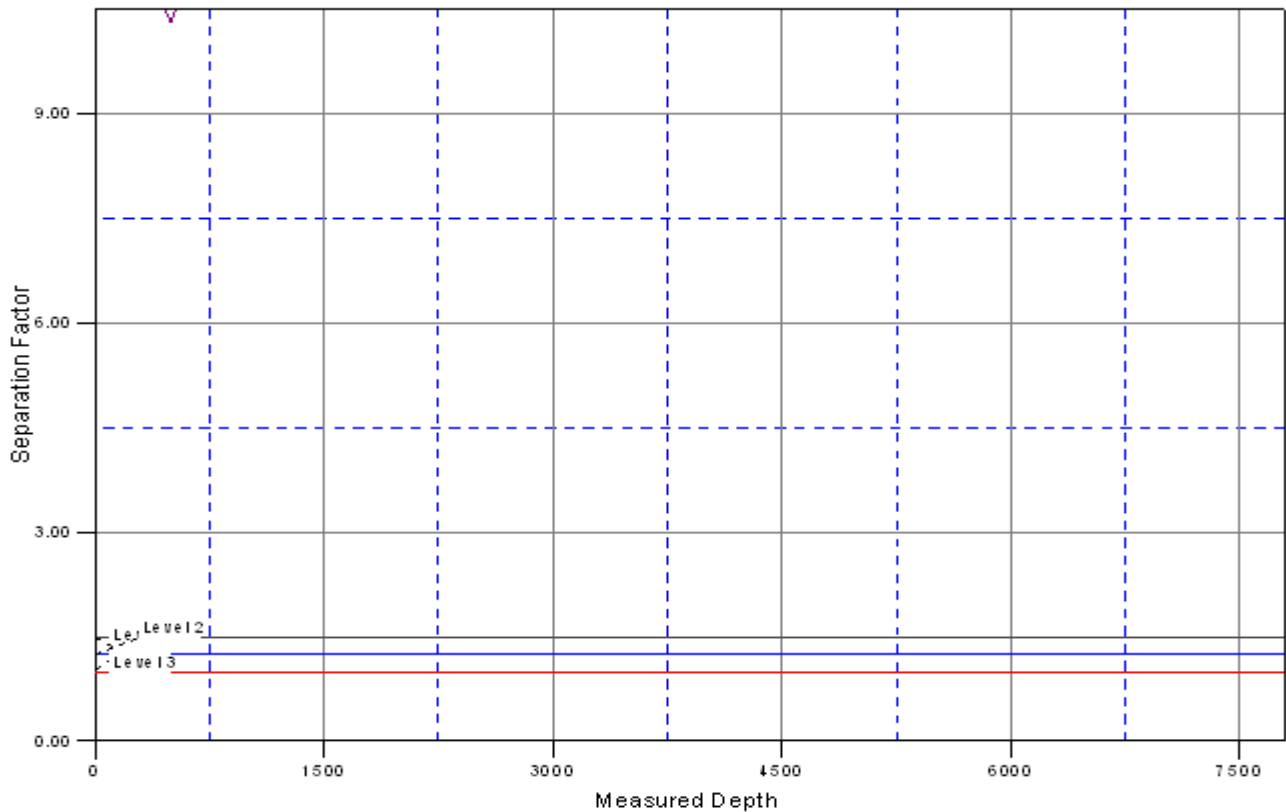
Reference Depths are relative to WELL @ 4913.0ft (Original Well Elev) Coordinates are relative to: Booth 28-23
 Offset Depths are relative to Offset Datum
 Central Meridian is -105.500000 °
 Coordinate System is US State Plane 1983, Colorado Northern Zone
 Grid Convergence at Surface is: 0.56°



Company:	BAYSWATER EXPLORATION & PRODUCTION	Local Co-ordinate Reference:	Well Booth 28-23
Project:	SEC.23-T7N-R65W	TVD Reference:	WELL @ 4913.0ft (Original Well Elev)
Reference Site:	Booth 10 Pad Sec.23-T7N-R65W	MD Reference:	WELL @ 4913.0ft (Original Well Elev)
Site Error:	0.0ft	North Reference:	True
Reference Well:	Booth 28-23	Survey Calculation Method:	Minimum Curvature
Well Error:	0.0ft	Output errors are at	2.00 sigma
Reference Wellbore	Wellbore #1	Database:	Landmark
Reference Design:	Plan #1 (5-07-12)	Offset TVD Reference:	Offset Datum

Reference Depths are relative to WELL @ 4913.0ft (Original Well Elev) Coordinates are relative to: Booth 28-23
 Offset Depths are relative to Offset Datum
 Central Meridian is -105.500000 °
 Coordinate System is US State Plane 1983, Colorado Northern Zone
 Grid Convergence at Surface is: 0.56°

Separation Factor Plot



LEGEND

◆ Booth 29-23, Wellbore #1, Plan #1 (5-07-12) \0