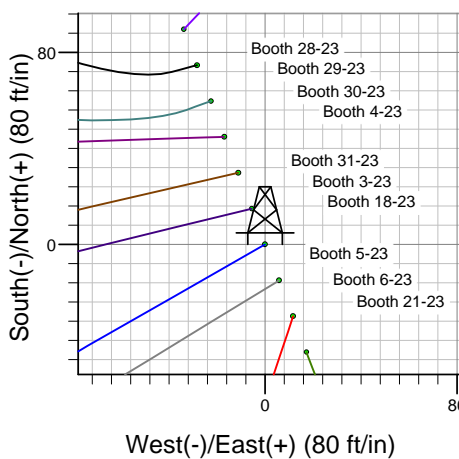
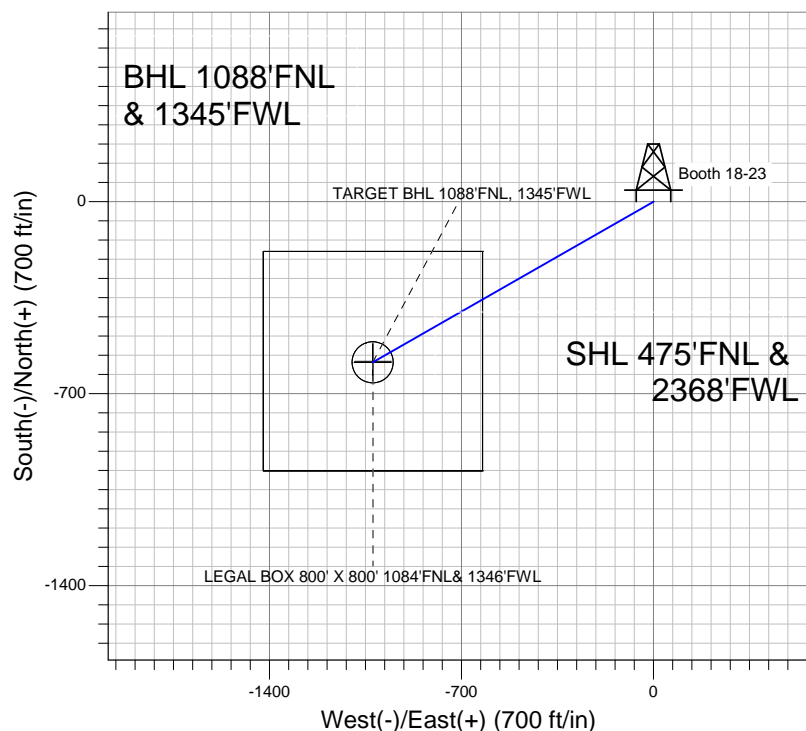
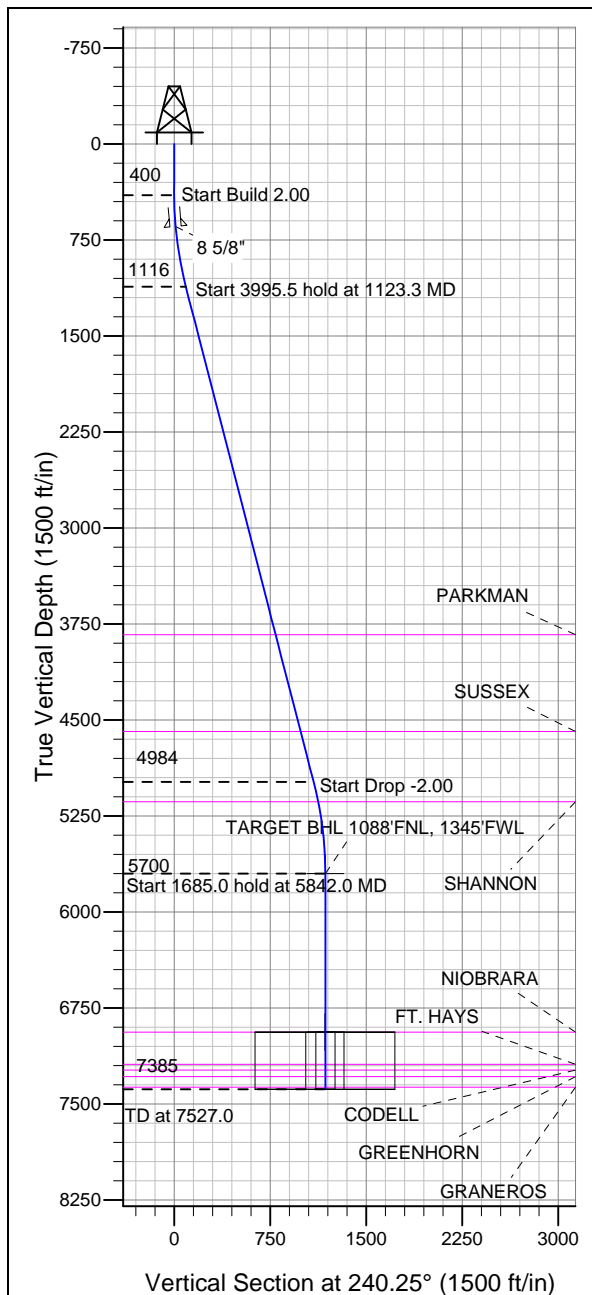


Well Name: Booth 18-23

Surface Location: Booth 10 Pad Sec.23-T7N-R65W
North American Datum 1983, US State Plane 1983 Colorado Northern Zone
Ground Elevation: 4896.0

+N/-S	+E/-W	Northing	Easting	Latitude	Longitude	Slot
0.0	0.0	1449862.08	3241374.97	40.565025	-104.631207	
		Original Well Elev WELL @ 4912.0ft (Original Well Elev)				

BAYSWATER EXPLORATION & PRODUCTION



Booth 10 Pad Sec.23-T7N-R65W
Booth 18-23
Plan #1 (5-07-12)
14:18, May 11 2012



Azimuths to True North
Magnetic North: 8.69°
Magnetic Field
Strength: 53136.9snT
Dip Angle: 67.18°
Date: 5/7/2012
Model: IGRF2010

WELLBORE TARGET DETAILS (LAT/LONG)

Name	TVD	+N/-S	+E/-W	Latitude	Longitude	Shape
TARGET BHL 1088'FNL, 1345'FWL	5700.0	-585.4	-1024.1	40.563418	-104.634893	Point
LEGAL BOX 800' X 800' 1084'FNL & 1346'FWL	6939.0	-581.4	-1023.1	40.563429	-104.634889	Rectangle (Sides: L800.0 W800.0)
TARGET CIRCLE 1088'FNL & 1345'FWL	6939.0	-585.4	-1024.1	40.563418	-104.634893	Circle (Radius: 75.0)

SECTION DETAILS

Sec	MD	Inc	Azi	TVD	+N/-S	+E/-W	DLeg	TFace	VSec	Target
1	0.0	0.00	0.00	0.0	0.0	0.0	0.00	0.00	0.0	
2	400.0	0.00	0.00	400.0	0.0	0.0	0.00	0.00	0.0	
3	1123.3	14.47	240.25	1115.6	-45.1	-78.8	2.00	240.25	90.8	
4	5118.7	14.47	240.25	4984.4	-540.4	-945.3	0.00	0.00	1088.8	
5	5842.0	0.00	0.00	5700.0	-585.4	-1024.1	2.00	180.00	1179.7	TARGET BHL 1088'FNL, 1345'FWL
6	7527.0	0.00	0.00	7385.0	-585.4	-1024.1	0.00	0.00	1179.7	



BAYSWATER EXPLORATION & PRODUCTION

SEC.23-T7N-R65W

Booth 10 Pad Sec.23-T7N-R65W

Booth 18-23

Wellbore #1

Plan: Plan #1 (5-07-12)

Standard Planning Report

11 May, 2012

Database:	Landmark	Local Co-ordinate Reference:	Well Booth 18-23
Company:	BAYSWATER EXPLORATION & PRODUCTION	TVD Reference:	WELL @ 4912.0ft (Original Well Elev)
Project:	SEC.23-T7N-R65W	MD Reference:	WELL @ 4912.0ft (Original Well Elev)
Site:	Booth 10 Pad Sec.23-T7N-R65W	North Reference:	True
Well:	Booth 18-23	Survey Calculation Method:	Minimum Curvature
Wellbore:	Wellbore #1		
Design:	Plan #1 (5-07-12)		

Project	SEC.23-T7N-R65W, Weld County, CO		
Map System:	US State Plane 1983	System Datum:	Mean Sea Level
Geo Datum:	North American Datum 1983		Using Well Reference Point
Map Zone:	Colorado Northern Zone		Using geodetic scale factor

Site	Booth 10 Pad Sec.23-T7N-R65W		
Site Position:		Northing:	1,449,951.39ft
From:	Lat/Long	Easting:	3,241,340.20ft
Position Uncertainty:	0.0 ft	Slot Radius:	"
		Latitude:	40.565271
		Longitude:	-104.631329
		Grid Convergence:	0.56 °

Well	Booth 18-23		
Well Position	+N/-S	-89.6 ft	Northing:
	+E/-W	33.9 ft	Easting:
Position Uncertainty		0.0 ft	Wellhead Elevation:
			ft
			Latitude:
			40.565025
			Longitude:
			-104.631207
			Ground Level:
			4,896.0 ft

Wellbore	Wellbore #1				
Magnetics	Model Name	Sample Date	Declination (°)	Dip Angle (°)	Field Strength (nT)
	IGRF2010	5/7/2012	8.69	67.18	53,137

Design	Plan #1 (5-07-12)			
Audit Notes:				
Version:	Phase:	PROTOTYPE	Tie On Depth:	0.0
Vertical Section:	Depth From (TVD) (ft)	+N/-S (ft)	+E/-W (ft)	Direction (°)
	0.0	0.0	0.0	240.25

Plan Sections										
Measured Depth (ft)	Inclination (°)	Azimuth (°)	Vertical Depth (ft)	+N/-S (ft)	+E/-W (ft)	Dogleg Rate (°/100ft)	Build Rate (°/100ft)	Turn Rate (°/100ft)	TFO (°)	Target
0.0	0.00	0.00	0.0	0.0	0.0	0.00	0.00	0.00	0.00	
400.0	0.00	0.00	400.0	0.0	0.0	0.00	0.00	0.00	0.00	
1,123.3	14.47	240.25	1,115.6	-45.1	-78.8	2.00	2.00	0.00	240.25	
5,118.7	14.47	240.25	4,984.4	-540.4	-945.3	0.00	0.00	0.00	0.00	
5,842.0	0.00	0.00	5,700.0	-585.4	-1,024.1	2.00	-2.00	0.00	180.00	TARGET BHL 1088
7,527.0	0.00	0.00	7,385.0	-585.4	-1,024.1	0.00	0.00	0.00	0.00	

Database:	Landmark	Local Co-ordinate Reference:	Well Booth 18-23
Company:	BAYSWATER EXPLORATION & PRODUCTION	TVD Reference:	WELL @ 4912.0ft (Original Well Elev)
Project:	SEC.23-T7N-R65W	MD Reference:	WELL @ 4912.0ft (Original Well Elev)
Site:	Booth 10 Pad Sec.23-T7N-R65W	North Reference:	True
Well:	Booth 18-23	Survey Calculation Method:	Minimum Curvature
Wellbore:	Wellbore #1		
Design:	Plan #1 (5-07-12)		

Planned Survey

Measured Depth (ft)	Inclination (°)	Azimuth (°)	Vertical Depth (ft)	+N/-S (ft)	+E/-W (ft)	Vertical Section (ft)	Dogleg Rate (°/100ft)	Build Rate (°/100ft)	Turn Rate (°/100ft)
0.0	0.00	0.00	0.0	0.0	0.0	0.0	0.00	0.00	0.00
40.0	0.00	0.00	40.0	0.0	0.0	0.0	0.00	0.00	0.00
80.0	0.00	0.00	80.0	0.0	0.0	0.0	0.00	0.00	0.00
120.0	0.00	0.00	120.0	0.0	0.0	0.0	0.00	0.00	0.00
160.0	0.00	0.00	160.0	0.0	0.0	0.0	0.00	0.00	0.00
200.0	0.00	0.00	200.0	0.0	0.0	0.0	0.00	0.00	0.00
240.0	0.00	0.00	240.0	0.0	0.0	0.0	0.00	0.00	0.00
280.0	0.00	0.00	280.0	0.0	0.0	0.0	0.00	0.00	0.00
320.0	0.00	0.00	320.0	0.0	0.0	0.0	0.00	0.00	0.00
360.0	0.00	0.00	360.0	0.0	0.0	0.0	0.00	0.00	0.00
400.0	0.00	0.00	400.0	0.0	0.0	0.0	0.00	0.00	0.00
440.0	0.80	240.25	440.0	-0.1	-0.2	0.3	2.00	2.00	0.00
480.0	1.60	240.25	480.0	-0.6	-1.0	1.1	2.00	2.00	0.00
520.0	2.40	240.25	520.0	-1.2	-2.2	2.5	2.00	2.00	0.00
560.0	3.20	240.25	559.9	-2.2	-3.9	4.5	2.00	2.00	0.00
600.0	4.00	240.25	599.8	-3.5	-6.1	7.0	2.00	2.00	0.00
640.0	4.80	240.25	639.7	-5.0	-8.7	10.0	2.00	2.00	0.00
645.3	4.91	240.25	645.0	-5.2	-9.1	10.5	2.00	2.00	0.00
8 5/8"									
680.0	5.60	240.25	679.6	-6.8	-11.9	13.7	2.00	2.00	0.00
720.0	6.40	240.25	719.3	-8.9	-15.5	17.9	2.00	2.00	0.00
760.0	7.20	240.25	759.1	-11.2	-19.6	22.6	2.00	2.00	0.00
800.0	8.00	240.25	798.7	-13.8	-24.2	27.9	2.00	2.00	0.00
840.0	8.80	240.25	838.3	-16.7	-29.3	33.7	2.00	2.00	0.00
880.0	9.60	240.25	877.8	-19.9	-34.8	40.1	2.00	2.00	0.00
920.0	10.40	240.25	917.1	-23.4	-40.9	47.1	2.00	2.00	0.00
960.0	11.20	240.25	956.4	-27.1	-47.4	54.6	2.00	2.00	0.00
1,000.0	12.00	240.25	995.6	-31.1	-54.3	62.6	2.00	2.00	0.00
1,040.0	12.80	240.25	1,034.7	-35.3	-61.8	71.2	2.00	2.00	0.00
1,080.0	13.60	240.25	1,073.6	-39.9	-69.7	80.3	2.00	2.00	0.00
1,120.0	14.40	240.25	1,112.4	-44.7	-78.1	90.0	2.00	2.00	0.00
1,123.3	14.47	240.25	1,115.6	-45.1	-78.8	90.8	2.00	2.00	0.00
1,160.0	14.47	240.25	1,151.2	-49.6	-86.8	100.0	0.00	0.00	0.00
1,200.0	14.47	240.25	1,189.9	-54.6	-95.5	110.0	0.00	0.00	0.00
1,240.0	14.47	240.25	1,228.6	-59.5	-104.2	120.0	0.00	0.00	0.00
1,280.0	14.47	240.25	1,267.4	-64.5	-112.8	130.0	0.00	0.00	0.00
1,320.0	14.47	240.25	1,306.1	-69.5	-121.5	140.0	0.00	0.00	0.00
1,360.0	14.47	240.25	1,344.8	-74.4	-130.2	150.0	0.00	0.00	0.00
1,400.0	14.47	240.25	1,383.6	-79.4	-138.9	159.9	0.00	0.00	0.00
1,440.0	14.47	240.25	1,422.3	-84.3	-147.5	169.9	0.00	0.00	0.00
1,480.0	14.47	240.25	1,461.0	-89.3	-156.2	179.9	0.00	0.00	0.00
1,520.0	14.47	240.25	1,499.8	-94.2	-164.9	189.9	0.00	0.00	0.00
1,560.0	14.47	240.25	1,538.5	-99.2	-173.6	199.9	0.00	0.00	0.00
1,600.0	14.47	240.25	1,577.2	-104.2	-182.2	209.9	0.00	0.00	0.00
1,640.0	14.47	240.25	1,616.0	-109.1	-190.9	219.9	0.00	0.00	0.00
1,680.0	14.47	240.25	1,654.7	-114.1	-199.6	229.9	0.00	0.00	0.00
1,720.0	14.47	240.25	1,693.4	-119.0	-208.3	239.9	0.00	0.00	0.00
1,760.0	14.47	240.25	1,732.2	-124.0	-216.9	249.9	0.00	0.00	0.00
1,800.0	14.47	240.25	1,770.9	-129.0	-225.6	259.9	0.00	0.00	0.00
1,840.0	14.47	240.25	1,809.6	-133.9	-234.3	269.9	0.00	0.00	0.00
1,880.0	14.47	240.25	1,848.4	-138.9	-243.0	279.8	0.00	0.00	0.00
1,920.0	14.47	240.25	1,887.1	-143.8	-251.6	289.8	0.00	0.00	0.00
1,960.0	14.47	240.25	1,925.8	-148.8	-260.3	299.8	0.00	0.00	0.00

Database:	Landmark	Local Co-ordinate Reference:	Well Booth 18-23
Company:	BAYSWATER EXPLORATION & PRODUCTION	TVD Reference:	WELL @ 4912.0ft (Original Well Elev)
Project:	SEC.23-T7N-R65W	MD Reference:	WELL @ 4912.0ft (Original Well Elev)
Site:	Booth 10 Pad Sec.23-T7N-R65W	North Reference:	True
Well:	Booth 18-23	Survey Calculation Method:	Minimum Curvature
Wellbore:	Wellbore #1		
Design:	Plan #1 (5-07-12)		

Planned Survey									
Measured Depth (ft)	Inclination (°)	Azimuth (°)	Vertical Depth (ft)	+N/-S (ft)	+E/-W (ft)	Vertical Section (ft)	Dogleg Rate (°/100ft)	Build Rate (°/100ft)	Turn Rate (°/100ft)
2,000.0	14.47	240.25	1,964.5	-153.8	-269.0	309.8	0.00	0.00	0.00
2,040.0	14.47	240.25	2,003.3	-158.7	-277.6	319.8	0.00	0.00	0.00
2,080.0	14.47	240.25	2,042.0	-163.7	-286.3	329.8	0.00	0.00	0.00
2,120.0	14.47	240.25	2,080.7	-168.6	-295.0	339.8	0.00	0.00	0.00
2,160.0	14.47	240.25	2,119.5	-173.6	-303.7	349.8	0.00	0.00	0.00
2,200.0	14.47	240.25	2,158.2	-178.5	-312.3	359.8	0.00	0.00	0.00
2,240.0	14.47	240.25	2,196.9	-183.5	-321.0	369.8	0.00	0.00	0.00
2,280.0	14.47	240.25	2,235.7	-188.5	-329.7	379.8	0.00	0.00	0.00
2,320.0	14.47	240.25	2,274.4	-193.4	-338.4	389.8	0.00	0.00	0.00
2,360.0	14.47	240.25	2,313.1	-198.4	-347.0	399.7	0.00	0.00	0.00
2,400.0	14.47	240.25	2,351.9	-203.3	-355.7	409.7	0.00	0.00	0.00
2,440.0	14.47	240.25	2,390.6	-208.3	-364.4	419.7	0.00	0.00	0.00
2,480.0	14.47	240.25	2,429.3	-213.3	-373.1	429.7	0.00	0.00	0.00
2,520.0	14.47	240.25	2,468.1	-218.2	-381.7	439.7	0.00	0.00	0.00
2,560.0	14.47	240.25	2,506.8	-223.2	-390.4	449.7	0.00	0.00	0.00
2,600.0	14.47	240.25	2,545.5	-228.1	-399.1	459.7	0.00	0.00	0.00
2,640.0	14.47	240.25	2,584.3	-233.1	-407.8	469.7	0.00	0.00	0.00
2,680.0	14.47	240.25	2,623.0	-238.0	-416.4	479.7	0.00	0.00	0.00
2,720.0	14.47	240.25	2,661.7	-243.0	-425.1	489.7	0.00	0.00	0.00
2,760.0	14.47	240.25	2,700.5	-248.0	-433.8	499.7	0.00	0.00	0.00
2,800.0	14.47	240.25	2,739.2	-252.9	-442.5	509.7	0.00	0.00	0.00
2,840.0	14.47	240.25	2,777.9	-257.9	-451.1	519.6	0.00	0.00	0.00
2,880.0	14.47	240.25	2,816.7	-262.8	-459.8	529.6	0.00	0.00	0.00
2,920.0	14.47	240.25	2,855.4	-267.8	-468.5	539.6	0.00	0.00	0.00
2,960.0	14.47	240.25	2,894.1	-272.8	-477.2	549.6	0.00	0.00	0.00
3,000.0	14.47	240.25	2,932.8	-277.7	-485.8	559.6	0.00	0.00	0.00
3,040.0	14.47	240.25	2,971.6	-282.7	-494.5	569.6	0.00	0.00	0.00
3,080.0	14.47	240.25	3,010.3	-287.6	-503.2	579.6	0.00	0.00	0.00
3,120.0	14.47	240.25	3,049.0	-292.6	-511.9	589.6	0.00	0.00	0.00
3,160.0	14.47	240.25	3,087.8	-297.6	-520.5	599.6	0.00	0.00	0.00
3,200.0	14.47	240.25	3,126.5	-302.5	-529.2	609.6	0.00	0.00	0.00
3,240.0	14.47	240.25	3,165.2	-307.5	-537.9	619.6	0.00	0.00	0.00
3,280.0	14.47	240.25	3,204.0	-312.4	-546.6	629.6	0.00	0.00	0.00
3,320.0	14.47	240.25	3,242.7	-317.4	-555.2	639.5	0.00	0.00	0.00
3,360.0	14.47	240.25	3,281.4	-322.3	-563.9	649.5	0.00	0.00	0.00
3,400.0	14.47	240.25	3,320.2	-327.3	-572.6	659.5	0.00	0.00	0.00
3,440.0	14.47	240.25	3,358.9	-332.3	-581.3	669.5	0.00	0.00	0.00
3,480.0	14.47	240.25	3,397.6	-337.2	-589.9	679.5	0.00	0.00	0.00
3,520.0	14.47	240.25	3,436.4	-342.2	-598.6	689.5	0.00	0.00	0.00
3,560.0	14.47	240.25	3,475.1	-347.1	-607.3	699.5	0.00	0.00	0.00
3,600.0	14.47	240.25	3,513.8	-352.1	-616.0	709.5	0.00	0.00	0.00
3,640.0	14.47	240.25	3,552.6	-357.1	-624.6	719.5	0.00	0.00	0.00
3,680.0	14.47	240.25	3,591.3	-362.0	-633.3	729.5	0.00	0.00	0.00
3,720.0	14.47	240.25	3,630.0	-367.0	-642.0	739.5	0.00	0.00	0.00
3,760.0	14.47	240.25	3,668.8	-371.9	-650.6	749.5	0.00	0.00	0.00
3,800.0	14.47	240.25	3,707.5	-376.9	-659.3	759.4	0.00	0.00	0.00
3,840.0	14.47	240.25	3,746.2	-381.8	-668.0	769.4	0.00	0.00	0.00
3,880.0	14.47	240.25	3,785.0	-386.8	-676.7	779.4	0.00	0.00	0.00
3,920.0	14.47	240.25	3,823.7	-391.8	-685.3	789.4	0.00	0.00	0.00
3,930.7	14.47	240.25	3,834.0	-393.1	-687.7	792.1	0.00	0.00	0.00
PARKMAN									
3,960.0	14.47	240.25	3,862.4	-396.7	-694.0	799.4	0.00	0.00	0.00
4,000.0	14.47	240.25	3,901.1	-401.7	-702.7	809.4	0.00	0.00	0.00

Database:	Landmark	Local Co-ordinate Reference:	Well Booth 18-23
Company:	BAYSWATER EXPLORATION & PRODUCTION	TVD Reference:	WELL @ 4912.0ft (Original Well Elev)
Project:	SEC.23-T7N-R65W	MD Reference:	WELL @ 4912.0ft (Original Well Elev)
Site:	Booth 10 Pad Sec.23-T7N-R65W	North Reference:	True
Well:	Booth 18-23	Survey Calculation Method:	Minimum Curvature
Wellbore:	Wellbore #1		
Design:	Plan #1 (5-07-12)		

Planned Survey									
Measured Depth (ft)	Inclination (°)	Azimuth (°)	Vertical Depth (ft)	+N/-S (ft)	+E/-W (ft)	Vertical Section (ft)	Dogleg Rate (°/100ft)	Build Rate (°/100ft)	Turn Rate (°/100ft)
4,040.0	14.47	240.25	3,939.9	-406.6	-711.4	819.4	0.00	0.00	0.00
4,080.0	14.47	240.25	3,978.6	-411.6	-720.0	829.4	0.00	0.00	0.00
4,120.0	14.47	240.25	4,017.3	-416.6	-728.7	839.4	0.00	0.00	0.00
4,160.0	14.47	240.25	4,056.1	-421.5	-737.4	849.4	0.00	0.00	0.00
4,200.0	14.47	240.25	4,094.8	-426.5	-746.1	859.4	0.00	0.00	0.00
4,240.0	14.47	240.25	4,133.5	-431.4	-754.7	869.4	0.00	0.00	0.00
4,280.0	14.47	240.25	4,172.3	-436.4	-763.4	879.3	0.00	0.00	0.00
4,320.0	14.47	240.25	4,211.0	-441.3	-772.1	889.3	0.00	0.00	0.00
4,360.0	14.47	240.25	4,249.7	-446.3	-780.8	899.3	0.00	0.00	0.00
4,400.0	14.47	240.25	4,288.5	-451.3	-789.4	909.3	0.00	0.00	0.00
4,440.0	14.47	240.25	4,327.2	-456.2	-798.1	919.3	0.00	0.00	0.00
4,480.0	14.47	240.25	4,365.9	-461.2	-806.8	929.3	0.00	0.00	0.00
4,520.0	14.47	240.25	4,404.7	-466.1	-815.5	939.3	0.00	0.00	0.00
4,560.0	14.47	240.25	4,443.4	-471.1	-824.1	949.3	0.00	0.00	0.00
4,600.0	14.47	240.25	4,482.1	-476.1	-832.8	959.3	0.00	0.00	0.00
4,640.0	14.47	240.25	4,520.9	-481.0	-841.5	969.3	0.00	0.00	0.00
4,680.0	14.47	240.25	4,559.6	-486.0	-850.2	979.3	0.00	0.00	0.00
4,710.4	14.47	240.25	4,589.0	-489.7	-856.7	986.8	0.00	0.00	0.00
SUSSEX									
4,720.0	14.47	240.25	4,598.3	-490.9	-858.8	989.3	0.00	0.00	0.00
4,760.0	14.47	240.25	4,637.1	-495.9	-867.5	999.2	0.00	0.00	0.00
4,800.0	14.47	240.25	4,675.8	-500.9	-876.2	1,009.2	0.00	0.00	0.00
4,840.0	14.47	240.25	4,714.5	-505.8	-884.9	1,019.2	0.00	0.00	0.00
4,880.0	14.47	240.25	4,753.3	-510.8	-893.5	1,029.2	0.00	0.00	0.00
4,920.0	14.47	240.25	4,792.0	-515.7	-902.2	1,039.2	0.00	0.00	0.00
4,960.0	14.47	240.25	4,830.7	-520.7	-910.9	1,049.2	0.00	0.00	0.00
5,000.0	14.47	240.25	4,869.4	-525.6	-919.6	1,059.2	0.00	0.00	0.00
5,040.0	14.47	240.25	4,908.2	-530.6	-928.2	1,069.2	0.00	0.00	0.00
5,080.0	14.47	240.25	4,946.9	-535.6	-936.9	1,079.2	0.00	0.00	0.00
5,118.7	14.47	240.25	4,984.4	-540.4	-945.3	1,088.8	0.00	0.00	0.00
5,120.0	14.44	240.25	4,985.6	-540.5	-945.6	1,089.2	2.00	-2.00	0.00
5,160.0	13.64	240.25	5,024.4	-545.3	-954.0	1,098.9	2.00	-2.00	0.00
5,200.0	12.84	240.25	5,063.4	-549.9	-962.0	1,108.0	2.00	-2.00	0.00
5,240.0	12.04	240.25	5,102.4	-554.2	-969.4	1,116.6	2.00	-2.00	0.00
5,277.3	11.29	240.25	5,139.0	-557.9	-976.0	1,124.2	2.00	-2.00	0.00
SHANNON									
5,280.0	11.24	240.25	5,141.6	-558.2	-976.4	1,124.7	2.00	-2.00	0.00
5,320.0	10.44	240.25	5,180.9	-561.9	-983.0	1,132.2	2.00	-2.00	0.00
5,360.0	9.64	240.25	5,220.3	-565.4	-989.0	1,139.2	2.00	-2.00	0.00
5,400.0	8.84	240.25	5,259.8	-568.5	-994.6	1,145.6	2.00	-2.00	0.00
5,440.0	8.04	240.25	5,299.3	-571.5	-999.7	1,151.5	2.00	-2.00	0.00
5,480.0	7.24	240.25	5,339.0	-574.1	-1,004.3	1,156.8	2.00	-2.00	0.00
5,520.0	6.44	240.25	5,378.7	-576.5	-1,008.5	1,161.6	2.00	-2.00	0.00
5,560.0	5.64	240.25	5,418.5	-578.5	-1,012.1	1,165.8	2.00	-2.00	0.00
5,600.0	4.84	240.25	5,458.3	-580.4	-1,015.3	1,169.4	2.00	-2.00	0.00
5,640.0	4.04	240.25	5,498.2	-581.9	-1,018.0	1,172.5	2.00	-2.00	0.00
5,680.0	3.24	240.25	5,538.1	-583.2	-1,020.2	1,175.1	2.00	-2.00	0.00
5,720.0	2.44	240.25	5,578.1	-584.1	-1,021.9	1,177.1	2.00	-2.00	0.00
5,760.0	1.64	240.25	5,618.0	-584.8	-1,023.1	1,178.5	2.00	-2.00	0.00
5,800.0	0.84	240.25	5,658.0	-585.3	-1,023.9	1,179.4	2.00	-2.00	0.00
5,840.0	0.04	240.25	5,698.0	-585.4	-1,024.1	1,179.7	2.00	-2.00	0.00
5,842.0	0.00	0.00	5,700.0	-585.4	-1,024.1	1,179.7	2.00	-2.00	6,063.19
TARGET BHL 1088'FNL, 1345'FWL									

Database:	Landmark	Local Co-ordinate Reference:	Well Booth 18-23
Company:	BAYSWATER EXPLORATION & PRODUCTION	TVD Reference:	WELL @ 4912.0ft (Original Well Elev)
Project:	SEC.23-T7N-R65W	MD Reference:	WELL @ 4912.0ft (Original Well Elev)
Site:	Booth 10 Pad Sec.23-T7N-R65W	North Reference:	True
Well:	Booth 18-23	Survey Calculation Method:	Minimum Curvature
Wellbore:	Wellbore #1		
Design:	Plan #1 (5-07-12)		

Planned Survey									
Measured Depth (ft)	Inclination (°)	Azimuth (°)	Vertical Depth (ft)	+N/-S (ft)	+E/-W (ft)	Vertical Section (ft)	Dogleg Rate (°/100ft)	Build Rate (°/100ft)	Turn Rate (°/100ft)
5,880.0	0.00	0.00	5,738.0	-585.4	-1,024.1	1,179.7	0.00	0.00	0.00
5,920.0	0.00	0.00	5,778.0	-585.4	-1,024.1	1,179.7	0.00	0.00	0.00
5,960.0	0.00	0.00	5,818.0	-585.4	-1,024.1	1,179.7	0.00	0.00	0.00
6,000.0	0.00	0.00	5,858.0	-585.4	-1,024.1	1,179.7	0.00	0.00	0.00
6,040.0	0.00	0.00	5,898.0	-585.4	-1,024.1	1,179.7	0.00	0.00	0.00
6,080.0	0.00	0.00	5,938.0	-585.4	-1,024.1	1,179.7	0.00	0.00	0.00
6,120.0	0.00	0.00	5,978.0	-585.4	-1,024.1	1,179.7	0.00	0.00	0.00
6,160.0	0.00	0.00	6,018.0	-585.4	-1,024.1	1,179.7	0.00	0.00	0.00
6,200.0	0.00	0.00	6,058.0	-585.4	-1,024.1	1,179.7	0.00	0.00	0.00
6,240.0	0.00	0.00	6,098.0	-585.4	-1,024.1	1,179.7	0.00	0.00	0.00
6,280.0	0.00	0.00	6,138.0	-585.4	-1,024.1	1,179.7	0.00	0.00	0.00
6,320.0	0.00	0.00	6,178.0	-585.4	-1,024.1	1,179.7	0.00	0.00	0.00
6,360.0	0.00	0.00	6,218.0	-585.4	-1,024.1	1,179.7	0.00	0.00	0.00
6,400.0	0.00	0.00	6,258.0	-585.4	-1,024.1	1,179.7	0.00	0.00	0.00
6,440.0	0.00	0.00	6,298.0	-585.4	-1,024.1	1,179.7	0.00	0.00	0.00
6,480.0	0.00	0.00	6,338.0	-585.4	-1,024.1	1,179.7	0.00	0.00	0.00
6,520.0	0.00	0.00	6,378.0	-585.4	-1,024.1	1,179.7	0.00	0.00	0.00
6,560.0	0.00	0.00	6,418.0	-585.4	-1,024.1	1,179.7	0.00	0.00	0.00
6,600.0	0.00	0.00	6,458.0	-585.4	-1,024.1	1,179.7	0.00	0.00	0.00
6,640.0	0.00	0.00	6,498.0	-585.4	-1,024.1	1,179.7	0.00	0.00	0.00
6,680.0	0.00	0.00	6,538.0	-585.4	-1,024.1	1,179.7	0.00	0.00	0.00
6,720.0	0.00	0.00	6,578.0	-585.4	-1,024.1	1,179.7	0.00	0.00	0.00
6,760.0	0.00	0.00	6,618.0	-585.4	-1,024.1	1,179.7	0.00	0.00	0.00
6,800.0	0.00	0.00	6,658.0	-585.4	-1,024.1	1,179.7	0.00	0.00	0.00
6,840.0	0.00	0.00	6,698.0	-585.4	-1,024.1	1,179.7	0.00	0.00	0.00
6,880.0	0.00	0.00	6,738.0	-585.4	-1,024.1	1,179.7	0.00	0.00	0.00
6,920.0	0.00	0.00	6,778.0	-585.4	-1,024.1	1,179.7	0.00	0.00	0.00
6,960.0	0.00	0.00	6,818.0	-585.4	-1,024.1	1,179.7	0.00	0.00	0.00
7,000.0	0.00	0.00	6,858.0	-585.4	-1,024.1	1,179.7	0.00	0.00	0.00
7,040.0	0.00	0.00	6,898.0	-585.4	-1,024.1	1,179.7	0.00	0.00	0.00
7,080.0	0.00	0.00	6,938.0	-585.4	-1,024.1	1,179.7	0.00	0.00	0.00
7,081.0	0.00	0.00	6,939.0	-585.4	-1,024.1	1,179.7	0.00	0.00	0.00
NIORARA - TARGET CIRCLE 1088'FNL & 1345'FWL - LEGAL BOX 800' X 800' 1084'FNL& 1346'FWL									
7,120.0	0.00	0.00	6,978.0	-585.4	-1,024.1	1,179.7	0.00	0.00	0.00
7,160.0	0.00	0.00	7,018.0	-585.4	-1,024.1	1,179.7	0.00	0.00	0.00
7,200.0	0.00	0.00	7,058.0	-585.4	-1,024.1	1,179.7	0.00	0.00	0.00
7,240.0	0.00	0.00	7,098.0	-585.4	-1,024.1	1,179.7	0.00	0.00	0.00
7,280.0	0.00	0.00	7,138.0	-585.4	-1,024.1	1,179.7	0.00	0.00	0.00
7,320.0	0.00	0.00	7,178.0	-585.4	-1,024.1	1,179.7	0.00	0.00	0.00
7,333.0	0.00	0.00	7,191.0	-585.4	-1,024.1	1,179.7	0.00	0.00	0.00
FT. HAYS									
7,360.0	0.00	0.00	7,218.0	-585.4	-1,024.1	1,179.7	0.00	0.00	0.00
7,377.0	0.00	0.00	7,235.0	-585.4	-1,024.1	1,179.7	0.00	0.00	0.00
CODELL									
7,400.0	0.00	0.00	7,258.0	-585.4	-1,024.1	1,179.7	0.00	0.00	0.00
7,429.0	0.00	0.00	7,287.0	-585.4	-1,024.1	1,179.7	0.00	0.00	0.00
GREENHORN									
7,440.0	0.00	0.00	7,298.0	-585.4	-1,024.1	1,179.7	0.00	0.00	0.00
7,480.0	0.00	0.00	7,338.0	-585.4	-1,024.1	1,179.7	0.00	0.00	0.00
7,511.0	0.00	0.00	7,369.0	-585.4	-1,024.1	1,179.7	0.00	0.00	0.00
GRANEROS									
7,520.0	0.00	0.00	7,378.0	-585.4	-1,024.1	1,179.7	0.00	0.00	0.00

Database:	Landmark	Local Co-ordinate Reference:	Well Booth 18-23
Company:	BAYSWATER EXPLORATION & PRODUCTION	TVD Reference:	WELL @ 4912.0ft (Original Well Elev)
Project:	SEC.23-T7N-R65W	MD Reference:	WELL @ 4912.0ft (Original Well Elev)
Site:	Booth 10 Pad Sec.23-T7N-R65W	North Reference:	True
Well:	Booth 18-23	Survey Calculation Method:	Minimum Curvature
Wellbore:	Wellbore #1		
Design:	Plan #1 (5-07-12)		

Planned Survey									
Measured Depth (ft)	Inclination (°)	Azimuth (°)	Vertical Depth (ft)	+N/-S (ft)	+E/-W (ft)	Vertical Section (ft)	Dogleg Rate (°/100ft)	Build Rate (°/100ft)	Turn Rate (°/100ft)
7,527.0	0.00	0.00	7,385.0	-585.4	-1,024.1	1,179.7	0.00	0.00	0.00

Targets									
Target Name	- hit/miss target	Dip Angle (°)	Dip Dir. (°)	TVD (ft)	+N/-S (ft)	+E/-W (ft)	Northing (ft)	Easting (ft)	
- Shape									Latitude Longitude
TARGET BHL 1088'F	0.00	0.00	5,700.0	-585.4	-1,024.1	1,449,266.67	3,240,356.64	40.563418	-104.634893
- plan hits target center									
- Point									
TARGET CIRCLE 108	0.00	0.00	6,939.0	-585.4	-1,024.1	1,449,266.67	3,240,356.64	40.563418	-104.634893
- plan hits target center									
- Circle (radius 75.0)									
LEGAL BOX 800' X 80	0.00	0.00	6,939.0	-581.4	-1,023.1	1,449,270.71	3,240,357.64	40.563429	-104.634889
- plan misses target center by 4.2ft at 7081.0ft MD (6939.0 TVD, -585.4 N, -1024.1 E)									
- Rectangle (sides W800.0 H800.0 D446.0)									

Casing Points					
Measured Depth (ft)	Vertical Depth (ft)	Name	Casing Diameter (")	Hole Diameter (")	
645.3	645.0	8 5/8"	8-5/8	12-1/4	

Formations						
Measured Depth (ft)	Vertical Depth (ft)	Name	Lithology	Dip (°)	Dip Direction (°)	
3,930.7	3,834.0	PARKMAN		0.00		
4,710.4	4,589.0	SUSSEX		0.00		
5,277.3	5,139.0	SHANNON		0.00		
7,081.0	6,939.0	NIOBRARA		0.00		
7,333.0	7,191.0	FT. HAYS		0.00		
7,377.0	7,235.0	CODELL		0.00		
7,429.0	7,287.0	GREENHORN		0.00		
7,511.0	7,369.0	GRANEROS		0.00		



BAYSWATER EXPLORATION & PRODUCTION

SEC.23-T7N-R65W

Booth 10 Pad Sec.23-T7N-R65W

Booth 18-23

Wellbore #1

Plan #1 (5-07-12)

Anticollision Report

11 May, 2012

Company:	BAYSWATER EXPLORATION & PRODUCTION	Local Co-ordinate Reference:	Well Booth 18-23
Project:	SEC.23-T7N-R65W	TVD Reference:	WELL @ 4912.0ft (Original Well Elev)
Reference Site:	Booth 10 Pad Sec.23-T7N-R65W	MD Reference:	WELL @ 4912.0ft (Original Well Elev)
Site Error:	0.0ft	North Reference:	True
Reference Well:	Booth 18-23	Survey Calculation Method:	Minimum Curvature
Well Error:	0.0ft	Output errors are at	2.00 sigma
Reference Wellbore	Wellbore #1	Database:	Landmark
Reference Design:	Plan #1 (5-07-12)	Offset TVD Reference:	Offset Datum

Reference	Plan #1 (5-07-12)		
Filter type:	NO GLOBAL FILTER: Using user defined selection & filtering criteria		
Interpolation Method:	MD Interval 100.0ft	Error Model:	ISCWSA
Depth Range:	Unlimited	Scan Method:	Closest Approach 3D
Results Limited by:	Maximum center-center distance of 10,000.0ft	Error Surface:	Elliptical Conic
Warning Levels Evaluated at:	2.00 Sigma		

Survey Tool Program	Date 5/7/2012			
From (ft)	To (ft)	Survey (Wellbore)	Tool Name	Description
0.0	7,527.0	Plan #1 (5-07-12) (Wellbore #1)	MWD	MWD - Standard

Summary						
Site Name	Reference Measured Depth (ft)	Offset Measured Depth (ft)	Distance Between Centres (ft)	Separation Between Ellipses (ft)	Warning	
Offset Well - Wellbore - Design						
Booth 10 Pad Sec.23-T7N-R65W						
Booth 3-23 - Wellbore #1 - Plan #1 (5-07-12)	400.0	400.0	15.9	14.4	10.129 CC	
Booth 3-23 - Wellbore #1 - Plan #1 (5-07-12)	500.0	500.0	16.3	14.3	8.138 ES	
Booth 3-23 - Wellbore #1 - Plan #1 (5-07-12)	600.0	599.8	18.4	16.0	7.565 SF	
Booth 5-23 - Wellbore #1 - Plan #1 (5-07-12)	200.0	200.0	16.0	15.4	23.782 CC	
Booth 5-23 - Wellbore #1 - Plan #1 (5-07-12)	300.0	299.9	16.4	15.3	14.845 ES	
Booth 5-23 - Wellbore #1 - Plan #1 (5-07-12)	500.0	498.8	23.0	21.1	11.610 SF	

Offset Design Booth 10 Pad Sec.23-T7N-R65W - Booth 3-23 - Wellbore #1 - Plan #1 (5-07-12)													Offset Site Error:	0.0ft
Survey Program: 0-MWD													Offset Well Error:	0.0ft
Reference	Offset	Semi Major Axis			Distance									
Measured Depth (ft)	Vertical Depth (ft)	Measured Depth (ft)	Vertical Depth (ft)	Reference (ft)	Offset (ft)	Highside Toolface (°)	Offset Wellbore Centre +N/-S (ft)	+E/-W (ft)	Between Centres (ft)	Between Ellipses (ft)	Minimum Separation (ft)	Separation Factor	Warning	
0.0	0.0	0.0	0.0	0.0	0.0	-20.41	14.9	-5.6	15.9	15.9	0.00	N/A		
100.0	100.0	100.0	100.0	0.1	0.1	-20.41	14.9	-5.6	15.9	15.7	0.22	70.906		
200.0	200.0	200.0	200.0	0.3	0.3	-20.41	14.9	-5.6	15.9	15.3	0.67	23.635		
300.0	300.0	300.0	300.0	0.6	0.6	-20.41	14.9	-5.6	15.9	14.8	1.12	14.181		
400.0	400.0	400.0	400.0	0.8	0.8	-20.41	14.9	-5.6	15.9	14.4	1.57	10.129 CC		
500.0	500.0	500.0	500.0	1.0	1.0	105.40	14.9	-5.6	16.3	14.3	2.00	8.138 ES		
600.0	599.8	599.8	599.8	1.2	1.2	121.25	14.9	-5.6	18.4	16.0	2.43	7.565 SF		
700.0	699.5	699.5	699.5	1.4	1.5	139.14	14.9	-5.6	24.1	21.2	2.88	8.381		
800.0	798.7	798.7	798.7	1.7	1.7	152.47	14.9	-5.6	34.3	31.0	3.32	10.318		
900.0	897.5	897.5	897.5	2.0	1.9	160.90	14.9	-5.6	48.7	45.0	3.77	12.932		
1,000.0	995.6	995.6	995.6	2.4	2.1	166.15	14.9	-5.6	67.1	62.8	4.21	15.923		
1,100.0	1,093.1	1,093.1	1,093.1	2.8	2.3	169.53	14.9	-5.6	89.1	84.4	4.66	19.127		
1,200.0	1,189.9	1,189.9	1,189.9	3.3	2.6	171.79	14.9	-5.6	113.7	108.6	5.12	22.222		
1,300.0	1,286.7	1,286.7	1,286.7	3.8	2.8	173.27	14.9	-5.6	138.4	132.9	5.58	24.802		
1,400.0	1,383.6	1,383.6	1,383.6	4.3	3.0	174.29	14.9	-5.6	163.3	157.2	6.05	26.971		
1,500.0	1,480.4	1,480.4	1,480.4	4.8	3.2	175.05	14.9	-5.6	188.2	181.6	6.53	28.814		
1,600.0	1,577.2	1,583.0	1,583.0	5.3	3.4	175.54	14.7	-6.7	212.0	205.0	7.01	30.266		
1,700.0	1,674.1	1,688.5	1,688.4	5.9	3.6	175.62	13.5	-11.6	232.6	225.1	7.47	31.136		
1,800.0	1,770.9	1,795.5	1,795.0	6.4	3.9	175.37	11.3	-20.3	249.8	241.8	7.95	31.425		
1,900.0	1,867.7	1,903.6	1,902.3	6.9	4.1	174.84	8.2	-33.1	263.5	255.0	8.44	31.205		
2,000.0	1,964.5	2,012.5	2,009.8	7.4	4.4	174.04	4.0	-50.0	273.7	264.7	8.96	30.553		

CC - Min centre to center distance or convergent point, SF - min separation factor, ES - min ellipse separation

Company:	BAYSWATER EXPLORATION & PRODUCTION	Local Co-ordinate Reference:	Well Booth 18-23
Project:	SEC.23-T7N-R65W	TVD Reference:	WELL @ 4912.0ft (Original Well Elev)
Reference Site:	Booth 10 Pad Sec.23-T7N-R65W	MD Reference:	WELL @ 4912.0ft (Original Well Elev)
Site Error:	0.0ft	North Reference:	True
Reference Well:	Booth 18-23	Survey Calculation Method:	Minimum Curvature
Well Error:	0.0ft	Output errors are at	2.00 sigma
Reference Wellbore	Wellbore #1	Database:	Landmark
Reference Design:	Plan #1 (5-07-12)	Offset TVD Reference:	Offset Datum

Offset Design		Booth 10 Pad Sec.23-T7N-R65W - Booth 3-23 - Wellbore #1 - Plan #1 (5-07-12)											Offset Site Error:	0.0 ft
Survey Program: 0-MWD													Offset Well Error:	0.0 ft
Reference		Offset		Semi Major Axis		Highside Toolface (°)	Offset Wellbore Centre		Distance		Minimum Separation (ft)	Separation Factor	Warning	
Measured Depth (ft)	Vertical Depth (ft)	Measured Depth (ft)	Vertical Depth (ft)	Reference	Offset		+N/-S (ft)	+E/-W (ft)	Between Centres (ft)	Between Ellipses (ft)				
2,100.0	2,061.4	2,114.0	2,109.5	8.0	4.7	173.16	-0.4	-68.1	281.6	272.1	9.48	29.714		
2,200.0	2,158.2	2,213.6	2,207.4	8.5	5.0	172.33	-4.8	-86.0	289.5	279.5	10.01	28.931		
2,300.0	2,255.0	2,313.2	2,305.3	9.0	5.3	171.55	-9.2	-103.9	297.5	287.0	10.55	28.210		
2,400.0	2,351.9	2,412.8	2,403.1	9.6	5.6	170.81	-13.6	-121.8	305.6	294.5	11.10	27.530		
2,500.0	2,448.7	2,512.4	2,501.0	10.1	6.0	170.11	-18.0	-139.7	313.6	302.0	11.66	26.895		
2,600.0	2,545.5	2,612.0	2,598.9	10.7	6.3	169.44	-22.4	-157.6	321.8	309.5	12.23	26.303		
2,700.0	2,642.4	2,711.6	2,696.8	11.2	6.7	168.80	-26.7	-175.5	329.9	317.1	12.81	25.747		
2,800.0	2,739.2	2,811.2	2,794.7	11.7	7.1	168.20	-31.1	-193.3	338.1	324.7	13.40	25.227		
2,900.0	2,836.0	2,910.8	2,892.5	12.3	7.5	167.62	-35.5	-211.2	346.4	332.4	14.00	24.739		
3,000.0	2,932.8	3,010.4	2,990.4	12.8	7.8	167.07	-39.9	-229.1	354.6	340.0	14.61	24.281		
3,100.0	3,029.7	3,110.0	3,088.3	13.4	8.2	166.55	-44.3	-247.0	362.9	347.7	15.22	23.851		
3,200.0	3,126.5	3,209.6	3,186.2	13.9	8.6	166.05	-48.7	-264.9	371.3	355.4	15.84	23.446		
3,300.0	3,223.3	3,309.2	3,284.1	14.4	9.0	165.57	-53.1	-282.8	379.6	363.2	16.46	23.064		
3,400.0	3,320.2	3,408.8	3,382.0	15.0	9.4	165.11	-57.5	-300.7	388.0	370.9	17.09	22.704		
3,500.0	3,417.0	3,507.3	3,478.8	15.5	9.8	164.68	-61.8	-318.4	396.4	378.7	17.72	22.374		
3,600.0	3,513.8	3,600.0	3,570.2	16.1	10.1	164.42	-65.5	-333.3	406.5	388.2	18.28	22.237		
3,700.0	3,610.7	3,684.5	3,653.9	16.6	10.3	164.38	-68.2	-344.4	419.1	400.3	18.79	22.309		
3,800.0	3,707.5	3,772.1	3,741.1	17.1	10.5	164.53	-70.4	-353.4	434.3	415.0	19.27	22.540		
3,900.0	3,804.3	3,859.0	3,827.7	17.7	10.7	164.84	-72.0	-359.8	452.1	432.4	19.72	22.929		
4,000.0	3,901.1	3,944.9	3,913.5	18.2	10.8	165.29	-72.9	-363.5	472.5	452.4	20.14	23.462		
4,100.0	3,998.0	4,031.4	4,000.0	18.8	11.0	165.87	-73.2	-364.8	495.5	474.9	20.54	24.125		
4,200.0	4,094.8	4,126.2	4,094.8	19.3	11.1	166.52	-73.2	-364.8	519.8	498.8	20.94	24.824		
4,300.0	4,191.6	4,223.1	4,191.6	19.9	11.3	167.14	-73.2	-364.8	544.1	522.8	21.35	25.481		
4,400.0	4,288.5	4,319.9	4,288.5	20.4	11.5	167.70	-73.2	-364.8	568.5	546.8	21.78	26.107		
4,500.0	4,385.3	4,416.7	4,385.3	20.9	11.6	168.21	-73.2	-364.8	593.0	570.8	22.21	26.704		
4,600.0	4,482.1	4,513.5	4,482.1	21.5	11.8	168.68	-73.2	-364.8	617.5	594.9	22.64	27.273		
4,700.0	4,579.0	4,610.4	4,579.0	22.0	12.0	169.12	-73.2	-364.8	642.0	619.0	23.08	27.816		
4,800.0	4,675.8	4,707.2	4,675.8	22.6	12.2	169.52	-73.2	-364.8	666.6	643.1	23.53	28.336		
4,900.0	4,772.6	4,804.0	4,772.6	23.1	12.3	169.90	-73.2	-364.8	691.2	667.3	23.97	28.832		
5,000.0	4,869.4	4,900.9	4,869.4	23.7	12.5	170.25	-73.2	-364.8	715.9	691.4	24.43	29.308		
5,100.0	4,966.3	4,997.7	4,966.3	24.2	12.7	170.58	-73.2	-364.8	740.5	715.6	24.88	29.763		
5,200.0	5,063.4	5,094.8	5,063.4	24.7	12.9	170.93	-73.2	-364.8	764.1	738.7	25.36	30.132		
5,300.0	5,161.3	5,192.7	5,161.3	25.0	13.0	171.23	-73.2	-364.8	784.4	758.6	25.80	30.406		
5,400.0	5,259.8	5,291.2	5,259.8	25.3	13.2	171.47	-73.2	-364.8	801.2	775.0	26.20	30.577		
5,500.0	5,358.8	5,390.3	5,358.8	25.5	13.4	171.65	-73.2	-364.8	814.7	788.2	26.58	30.651		
5,600.0	5,458.3	5,489.7	5,458.3	25.8	13.6	171.78	-73.2	-364.8	824.8	797.9	26.93	30.634		
5,700.0	5,558.1	5,589.5	5,558.1	25.9	13.8	171.87	-73.2	-364.8	831.4	804.2	27.23	30.529		
5,800.0	5,658.0	5,689.4	5,658.0	26.0	14.0	171.91	-73.2	-364.8	834.6	807.1	27.51	30.341		
5,900.0	5,758.0	5,789.4	5,758.0	26.1	14.2	52.16	-73.2	-364.8	834.9	807.1	27.83	29.997		
6,000.0	5,858.0	5,889.4	5,858.0	26.2	14.4	52.16	-73.2	-364.8	834.9	806.7	28.20	29.604		
6,100.0	5,958.0	5,989.4	5,958.0	26.3	14.6	52.16	-73.2	-364.8	834.9	806.3	28.57	29.219		
6,200.0	6,058.0	6,089.4	6,058.0	26.4	14.8	52.16	-73.2	-364.8	834.9	806.0	28.95	28.842		
6,300.0	6,158.0	6,189.4	6,158.0	26.5	14.9	52.16	-73.2	-364.8	834.9	805.6	29.32	28.473		
6,400.0	6,258.0	6,289.4	6,258.0	26.6	15.1	52.16	-73.2	-364.8	834.9	805.2	29.70	28.111		
6,500.0	6,358.0	6,389.4	6,358.0	26.7	15.3	52.16	-73.2	-364.8	834.9	804.8	30.08	27.757		
6,600.0	6,458.0	6,489.4	6,458.0	26.8	15.5	52.16	-73.2	-364.8	834.9	804.5	30.46	27.410		
6,700.0	6,558.0	6,589.4	6,558.0	26.9	15.7	52.16	-73.2	-364.8	834.9	804.1	30.84	27.070		
6,800.0	6,658.0	6,689.4	6,658.0	27.0	15.9	52.16	-73.2	-364.8	834.9	803.7	31.23	26.736		
6,900.0	6,758.0	6,789.4	6,758.0	27.1	16.1	52.16	-73.2	-364.8	834.9	803.3	31.61	26.410		
7,000.0	6,858.0	6,889.4	6,858.0	27.3	16.3	52.16	-73.2	-364.8	834.9	802.9	32.00	26.090		
7,100.0	6,958.0	6,989.4	6,958.0	27.4	16.5	52.16	-73.2	-364.8	834.9	802.5	32.39	25.777		

CC - Min centre to center distance or convergent point, SF - min separation factor, ES - min ellipse separation

Company:	BAYSWATER EXPLORATION & PRODUCTION	Local Co-ordinate Reference:	Well Booth 18-23
Project:	SEC.23-T7N-R65W	TVD Reference:	WELL @ 4912.0ft (Original Well Elev)
Reference Site:	Booth 10 Pad Sec.23-T7N-R65W	MD Reference:	WELL @ 4912.0ft (Original Well Elev)
Site Error:	0.0ft	North Reference:	True
Reference Well:	Booth 18-23	Survey Calculation Method:	Minimum Curvature
Well Error:	0.0ft	Output errors are at	2.00 sigma
Reference Wellbore	Wellbore #1	Database:	Landmark
Reference Design:	Plan #1 (5-07-12)	Offset TVD Reference:	Offset Datum

Offset Design Booth 10 Pad Sec.23-T7N-R65W - Booth 3-23 - Wellbore #1 - Plan #1 (5-07-12)												Offset Site Error:	0.0 ft
Survey Program: 0-MWD												Offset Well Error:	0.0 ft
Reference	Offset	Semi Major Axis		Distance									
Measured Depth (ft)	Vertical Depth (ft)	Measured Depth (ft)	Vertical Depth (ft)	Reference (ft)	Offset (ft)	Highside Toolface (°)	Offset Wellbore Centre +N/-S (ft)	Offset Wellbore Centre +E/-W (ft)	Between Centres (ft)	Between Ellipses (ft)	Minimum Separation (ft)	Separation Factor	Warning
7,200.0	7,058.0	7,089.4	7,058.0	27.5	16.7	52.16	-73.2	-364.8	834.9	802.1	32.78	25.470	
7,300.0	7,158.0	7,189.4	7,158.0	27.6	16.9	52.16	-73.2	-364.8	834.9	801.8	33.17	25.169	
7,400.0	7,258.0	7,289.4	7,258.0	27.7	17.1	52.16	-73.2	-364.8	834.9	801.4	33.57	24.874	
7,500.0	7,358.0	7,389.4	7,358.0	27.8	17.4	52.16	-73.2	-364.8	834.9	801.0	33.96	24.585	
7,527.0	7,385.0	7,416.4	7,385.0	27.9	17.4	52.16	-73.2	-364.8	834.9	800.9	34.07	24.508	

Company:	BAYSWATER EXPLORATION & PRODUCTION	Local Co-ordinate Reference:	Well Booth 18-23
Project:	SEC.23-T7N-R65W	TVD Reference:	WELL @ 4912.0ft (Original Well Elev)
Reference Site:	Booth 10 Pad Sec.23-T7N-R65W	MD Reference:	WELL @ 4912.0ft (Original Well Elev)
Site Error:	0.0ft	North Reference:	True
Reference Well:	Booth 18-23	Survey Calculation Method:	Minimum Curvature
Well Error:	0.0ft	Output errors are at	2.00 sigma
Reference Wellbore	Wellbore #1	Database:	Landmark
Reference Design:	Plan #1 (5-07-12)	Offset TVD Reference:	Offset Datum

Offset Design Booth 10 Pad Sec.23-T7N-R65W - Booth 5-23 - Wellbore #1 - Plan #1 (5-07-12)													Offset Site Error:	0.0 ft
Survey Program: 0-MWD													Offset Well Error:	0.0 ft
Measured Depth (ft)	Vertical Depth (ft)	Measured Depth (ft)	Vertical Depth (ft)	Reference	Offset	Semi Major Axis	Highside Toolface (°)	Offset Wellbore Centre +N/-S (ft)	+E/-W (ft)	Between Centres (ft)	Between Ellipses (ft)	Minimum Separation (ft)	Separation Factor	Warning
0.0	0.0	0.0	0.0	0.0	0.0	158.66	158.66	-14.9	5.8	16.0	16.0	0.00	N/A	
100.0	100.0	100.0	100.0	0.1	0.1	158.66	158.66	-14.9	5.8	16.0	15.8	0.22	71.347	
200.0	200.0	200.0	200.0	0.3	0.3	158.66	158.66	-14.9	5.8	16.0	15.4	0.67	23.782 CC	
300.0	300.0	299.9	299.8	0.6	0.5	164.65	164.65	-15.8	4.4	16.4	15.3	1.11	14.845 ES	
400.0	400.0	399.5	399.3	0.8	0.8	-179.74	-179.74	-18.6	-0.1	18.6	17.0	1.55	12.012	
500.0	500.0	498.8	498.2	1.0	1.0	-45.22	-45.22	-23.1	-7.4	23.0	21.1	1.98	11.610 SF	
600.0	599.8	597.8	596.6	1.2	1.3	-35.85	-35.85	-29.3	-17.7	28.6	26.1	2.42	11.787	
700.0	699.5	696.7	694.2	1.4	1.6	-29.80	-29.80	-37.4	-30.8	34.6	31.7	2.88	12.016	
800.0	798.7	795.3	791.0	1.7	2.0	-25.74	-25.74	-47.1	-46.7	40.9	37.6	3.35	12.197	
900.0	897.5	893.6	886.9	2.0	2.5	-22.90	-22.90	-58.6	-65.4	47.4	43.5	3.85	12.307	
1,000.0	995.6	991.8	981.7	2.4	3.0	-20.87	-20.87	-71.7	-86.9	53.9	49.5	4.37	12.345	
1,100.0	1,093.1	1,089.7	1,075.5	2.8	3.5	-19.39	-19.39	-86.5	-111.0	60.4	55.5	4.91	12.317	
1,200.0	1,189.9	1,187.3	1,167.9	3.3	4.2	-18.06	-18.06	-102.9	-137.8	67.9	62.4	5.48	12.391	
1,300.0	1,286.7	1,284.3	1,258.6	3.8	4.8	-18.39	-18.39	-120.9	-167.1	78.6	72.6	6.06	12.968	
1,400.0	1,383.6	1,380.5	1,347.4	4.3	5.6	-14.64	-14.64	-140.2	-198.7	92.7	86.0	6.64	13.953	
1,500.0	1,480.4	1,479.1	1,437.6	4.8	6.4	-13.13	-13.13	-160.9	-232.4	108.5	101.3	7.23	15.004	
1,600.0	1,577.2	1,577.8	1,528.0	5.3	7.2	-12.00	-12.00	-181.6	-266.3	124.4	116.6	7.83	15.892	
1,700.0	1,674.1	1,676.5	1,618.4	5.9	8.0	-11.13	-11.13	-202.3	-300.1	140.4	131.9	8.43	16.645	
1,800.0	1,770.9	1,775.2	1,708.8	6.4	8.9	-10.43	-10.43	-223.1	-333.9	156.4	147.3	9.04	17.291	
1,900.0	1,867.7	1,873.9	1,799.1	6.9	9.7	-9.87	-9.87	-243.8	-367.7	172.4	162.7	9.66	17.848	
2,000.0	1,964.5	1,972.6	1,889.5	7.4	10.5	-9.40	-9.40	-264.5	-401.6	188.4	178.1	10.27	18.334	
2,100.0	2,061.4	2,071.3	1,979.9	8.0	11.3	-9.00	-9.00	-285.2	-435.4	204.4	193.5	10.89	18.761	
2,200.0	2,158.2	2,170.0	2,070.3	8.5	12.2	-8.66	-8.66	-306.0	-469.2	220.4	208.9	11.52	19.138	
2,300.0	2,255.0	2,268.7	2,160.6	9.0	13.0	-8.37	-8.37	-326.7	-503.1	236.4	224.3	12.14	19.473	
2,400.0	2,351.9	2,367.4	2,251.0	9.6	13.8	-8.11	-8.11	-347.4	-536.9	252.5	239.7	12.77	19.774	
2,500.0	2,448.7	2,466.1	2,341.4	10.1	14.7	-7.89	-7.89	-368.1	-570.7	268.5	255.1	13.40	20.044	
2,600.0	2,545.5	2,564.8	2,431.8	10.7	15.5	-7.69	-7.69	-388.9	-604.5	284.6	270.6	14.03	20.288	
2,700.0	2,642.4	2,663.5	2,522.1	11.2	16.4	-7.51	-7.51	-409.6	-638.4	300.6	286.0	14.66	20.510	
2,800.0	2,739.2	2,762.2	2,612.5	11.7	17.2	-7.35	-7.35	-430.3	-672.2	316.7	301.4	15.29	20.713	
2,900.0	2,836.0	2,860.9	2,702.9	12.3	18.0	-7.20	-7.20	-451.0	-706.0	332.7	316.8	15.92	20.898	
3,000.0	2,932.8	2,959.6	2,793.3	12.8	18.9	-7.07	-7.07	-471.7	-739.9	348.8	332.2	16.56	21.068	
3,100.0	3,029.7	3,058.3	2,883.6	13.4	19.7	-6.95	-6.95	-492.5	-773.7	364.9	347.7	17.19	21.225	
3,200.0	3,126.5	3,157.0	2,974.0	13.9	20.6	-6.84	-6.84	-513.2	-807.5	380.9	363.1	17.82	21.370	
3,300.0	3,223.3	3,255.7	3,064.4	14.4	21.4	-6.74	-6.74	-533.9	-841.3	397.0	378.5	18.46	21.505	
3,400.0	3,320.2	3,354.4	3,154.8	15.0	22.2	-6.65	-6.65	-554.6	-875.2	413.0	393.9	19.10	21.630	
3,500.0	3,417.0	3,453.1	3,245.1	15.5	23.1	-6.56	-6.56	-575.4	-909.0	429.1	409.4	19.73	21.746	
3,600.0	3,513.8	3,551.8	3,335.5	16.1	23.9	-6.48	-6.48	-596.1	-942.8	445.2	424.8	20.37	21.855	
3,700.0	3,610.7	3,650.5	3,425.9	16.6	24.8	-6.41	-6.41	-616.8	-976.7	461.2	440.2	21.01	21.957	
3,800.0	3,707.5	3,749.2	3,516.3	17.1	25.6	-6.34	-6.34	-637.5	-1,010.5	477.3	455.7	21.64	22.053	
3,900.0	3,804.3	3,847.9	3,606.7	17.7	26.4	-6.27	-6.27	-658.3	-1,044.3	493.4	471.1	22.28	22.143	
4,000.0	3,901.1	3,946.6	3,697.0	18.2	27.3	-6.21	-6.21	-679.0	-1,078.1	509.4	486.5	22.92	22.227	
4,100.0	3,998.0	4,045.3	3,787.4	18.8	28.1	-6.16	-6.16	-699.7	-1,112.0	525.5	501.9	23.56	22.307	
4,200.0	4,094.8	4,144.0	3,877.8	19.3	29.0	-6.10	-6.10	-720.4	-1,145.8	541.6	517.4	24.20	22.382	
4,300.0	4,191.6	4,242.7	3,968.2	19.9	29.8	-6.05	-6.05	-741.1	-1,179.6	557.6	532.8	24.84	22.453	
4,400.0	4,288.5	4,341.4	4,058.5	20.4	30.6	-6.00	-6.00	-761.9	-1,213.5	573.7	548.2	25.47	22.521	
4,500.0	4,385.3	4,440.1	4,148.9	20.9	31.5	-5.96	-5.96	-782.6	-1,247.3	589.8	563.7	26.11	22.585	
4,600.0	4,482.1	4,538.8	4,239.3	21.5	32.3	-5.92	-5.92	-803.3	-1,281.1	605.8	579.1	26.75	22.646	
4,700.0	4,579.0	4,637.5	4,329.7	22.0	33.2	-5.88	-5.88	-824.0	-1,315.0	621.9	594.5	27.39	22.704	
4,800.0	4,675.8	4,736.2	4,420.0	22.6	34.0	-5.84	-5.84	-844.8	-1,348.8	638.0	610.0	28.03	22.759	
4,900.0	4,772.6	4,834.9	4,510.4	23.1	34.9	-5.80	-5.80	-865.5	-1,382.6	654.1	625.4	28.67	22.811	
5,000.0	4,869.4	4,933.6	4,600.8	23.7	35.7	-5.77	-5.77	-886.2	-1,416.4	670.1	640.8	29.31	22.861	

CC - Min centre to center distance or convergent point, SF - min separation factor, ES - min ellipse separation

Company:	BAYSWATER EXPLORATION & PRODUCTION	Local Co-ordinate Reference:	Well Booth 18-23
Project:	SEC.23-T7N-R65W	TVD Reference:	WELL @ 4912.0ft (Original Well Elev)
Reference Site:	Booth 10 Pad Sec.23-T7N-R65W	MD Reference:	WELL @ 4912.0ft (Original Well Elev)
Site Error:	0.0ft	North Reference:	True
Reference Well:	Booth 18-23	Survey Calculation Method:	Minimum Curvature
Well Error:	0.0ft	Output errors are at	2.00 sigma
Reference Wellbore	Wellbore #1	Database:	Landmark
Reference Design:	Plan #1 (5-07-12)	Offset TVD Reference:	Offset Datum

Offset Design Booth 10 Pad Sec.23-T7N-R65W - Booth 5-23 - Wellbore #1 - Plan #1 (5-07-12)													Offset Site Error:	0.0 ft
Survey Program: 0-MWD													Offset Well Error:	0.0 ft
Measured Depth (ft)	Vertical Depth (ft)	Measured Depth (ft)	Vertical Depth (ft)	Reference	Offset	Semi Major Axis	Highside Toolface (°)	Offset Wellbore Centre +N/-S (ft)	Offset Wellbore Centre +E/-W (ft)	Between Centres (ft)	Between Ellipses (ft)	Minimum Separation (ft)	Separation Factor	Warning
5,100.0	4,966.3	5,032.3	4,691.2	24.2	36.5	-5.73	-906.9	-1,450.3	686.2	656.2	29.95	22.909		
5,200.0	5,063.4	5,130.8	4,781.4	24.7	37.4	-5.72	-927.6	-1,484.0	703.4	672.9	30.52	23.049		
5,300.0	5,161.3	5,236.9	4,878.6	25.0	38.2	-5.69	-949.8	-1,520.3	723.8	692.8	31.02	23.336		
5,400.0	5,259.8	5,368.3	5,000.7	25.3	39.1	-5.64	-975.2	-1,561.8	744.4	712.9	31.51	23.627		
5,500.0	5,358.8	5,501.4	5,126.4	25.5	39.8	-5.58	-997.9	-1,598.8	763.9	732.0	31.92	23.935		
5,600.0	5,458.3	5,635.9	5,255.4	25.8	40.4	-5.52	-1,017.8	-1,631.2	782.2	750.0	32.25	24.259		
5,700.0	5,558.1	5,771.9	5,387.5	25.9	40.9	-5.46	-1,034.6	-1,658.7	799.4	766.9	32.50	24.596		
5,800.0	5,658.0	5,909.2	5,522.4	26.0	41.4	-5.40	-1,048.3	-1,681.0	815.2	782.5	32.67	24.949		
5,900.0	5,758.0	6,048.0	5,659.7	26.1	41.7	-125.08	-1,058.6	-1,697.9	829.2	796.2	32.97	25.149		
6,000.0	5,858.0	6,188.3	5,799.4	26.2	42.0	-125.02	-1,065.5	-1,709.2	838.6	805.2	33.36	25.136		
6,100.0	5,958.0	6,329.7	5,940.6	26.3	42.2	-125.00	-1,068.9	-1,714.7	843.1	809.4	33.73	24.999		
6,200.0	6,058.0	6,447.1	6,058.0	26.4	42.2	-125.00	-1,069.2	-1,715.2	843.6	809.5	34.04	24.778		
6,300.0	6,158.0	6,547.1	6,158.0	26.5	42.3	-125.00	-1,069.2	-1,715.2	843.6	809.2	34.34	24.566		
6,400.0	6,258.0	6,647.1	6,258.0	26.6	42.4	-125.00	-1,069.2	-1,715.2	843.6	808.9	34.63	24.356		
6,500.0	6,358.0	6,747.1	6,358.0	26.7	42.4	-125.00	-1,069.2	-1,715.2	843.6	808.6	34.93	24.147		
6,600.0	6,458.0	6,847.1	6,458.0	26.8	42.5	-125.00	-1,069.2	-1,715.2	843.6	808.3	35.24	23.940		
6,700.0	6,558.0	6,947.1	6,558.0	26.9	42.6	-125.00	-1,069.2	-1,715.2	843.6	808.0	35.54	23.734		
6,800.0	6,658.0	7,047.1	6,658.0	27.0	42.6	-125.00	-1,069.2	-1,715.2	843.6	807.7	35.85	23.529		
6,900.0	6,758.0	7,147.1	6,758.0	27.1	42.7	-125.00	-1,069.2	-1,715.2	843.6	807.4	36.16	23.327		
7,000.0	6,858.0	7,247.1	6,858.0	27.3	42.8	-125.00	-1,069.2	-1,715.2	843.6	807.1	36.48	23.126		
7,100.0	6,958.0	7,347.1	6,958.0	27.4	42.8	-125.00	-1,069.2	-1,715.2	843.6	806.8	36.79	22.926		
7,200.0	7,058.0	7,447.1	7,058.0	27.5	42.9	-125.00	-1,069.2	-1,715.2	843.6	806.4	37.11	22.729		
7,300.0	7,158.0	7,547.1	7,158.0	27.6	43.0	-125.00	-1,069.2	-1,715.2	843.6	806.1	37.44	22.533		
7,400.0	7,258.0	7,647.1	7,258.0	27.7	43.1	-125.00	-1,069.2	-1,715.2	843.6	805.8	37.76	22.339		
7,500.0	7,358.0	7,747.1	7,358.0	27.8	43.1	-125.00	-1,069.2	-1,715.2	843.6	805.5	38.09	22.147		
7,527.0	7,385.0	7,774.1	7,385.0	27.9	43.1	-125.00	-1,069.2	-1,715.2	843.6	805.4	38.18	22.096		

Reference Depths are relative to WELL @ 4912.0ft (Original Well Elev)Coordinates are relative to: Booth 18-23
Offset Depths are relative to Offset DatumCoordinate System is US State Plane 1983, Colorado Northern Zone
Central Meridian is -105.500000 °Grid Convergence at Surface is: 0.56°



Company:	BAYSWATER EXPLORATION & PRODUCTION	Local Co-ordinate Reference:	Well Booth 18-23
Project:	SEC.23-T7N-R65W	TVD Reference:	WELL @ 4912.0ft (Original Well Elev)
Reference Site:	Booth 10 Pad Sec.23-T7N-R65W	MD Reference:	WELL @ 4912.0ft (Original Well Elev)
Site Error:	0.0ft	North Reference:	True
Reference Well:	Booth 18-23	Survey Calculation Method:	Minimum Curvature
Well Error:	0.0ft	Output errors are at	2.00 sigma
Reference Wellbore	Wellbore #1	Database:	Landmark
Reference Design:	Plan #1 (5-07-12)	Offset TVD Reference:	Offset Datum

Reference Depths are relative to WELL @ 4912.0ft (Original Well Elev) Coordinates are relative to: Booth 18-23
 Offset Depths are relative to Offset Datum
 Central Meridian is -105.500000 °
 Coordinate System is US State Plane 1983, Colorado Northern Zone
 Grid Convergence at Surface is: 0.56°

