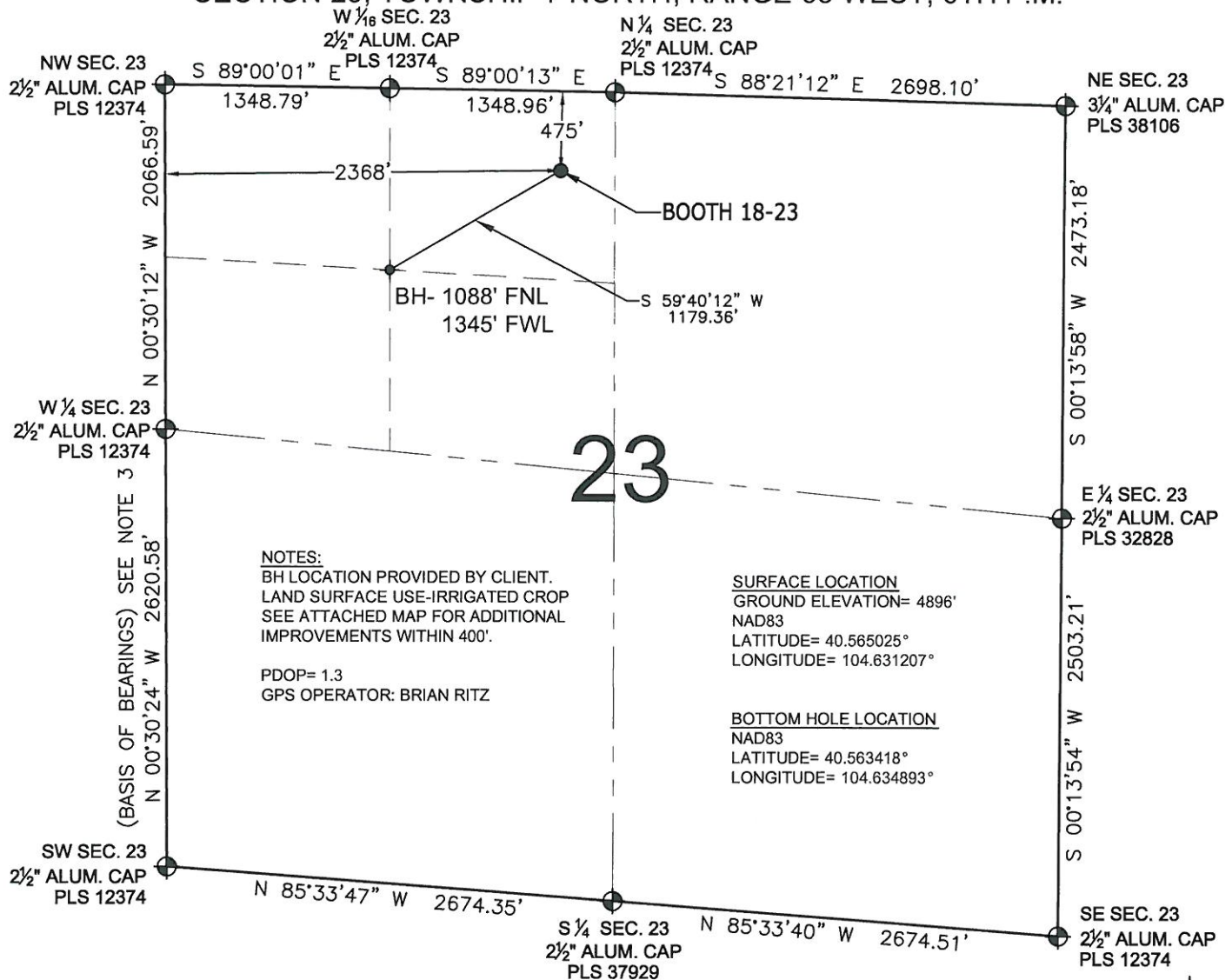


WELL LOCATION CERTIFICATE: BOOTH 18-23

SECTION 23, TOWNSHIP 7 NORTH, RANGE 65 WEST, 6TH P.M.



NOTES:
BH LOCATION PROVIDED BY CLIENT.
LAND SURFACE USE-IRRIGATED CROP
SEE ATTACHED MAP FOR ADDITIONAL
IMPROVEMENTS WITHIN 400'.

PDOP= 1.3
GPS OPERATOR: BRIAN RITZ

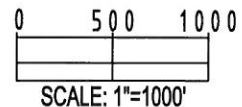
SURFACE LOCATION
GROUND ELEVATION= 4896'
NAD83
LATITUDE= 40.565025°
LONGITUDE= 104.631207°

BOTTOM HOLE LOCATION
NAD83
LATITUDE= 40.563418°
LONGITUDE= 104.634893°

WELL BOOTH 18-23 TO BE LOCATED 475' FNL AND 2368' FWL

LEGEND

- ⊕ = EXISTING MONUMENT ♦ = BOTTOM HOLE BH = BOTTOM HOLE
● = PROPOSED WELL ◆ = EXISTING WELL



NOTES:

- THIS FIELD SURVEY CONFORMS TO THE MINIMUM STANDARDS SET BY THE C.O.G.C.C., RULE NO. 215
- HORIZONTAL POSITIONS AND ORTHOMETRIC ELEVATIONS SHOWN AT THE WELL HEAD, ARE BASED ON GPS-RTK POSITIONS DERIVED FROM MINIMUM 2-HOUR STATIC OBSERVATIONS CORRECTED BY THE NATIONAL GEODETIC SURVEY ONLINE POSITIONING USER SERVICE, O.P.U.S. DATUM: HORIZONTAL = NAD83/2007, VERTICAL = NAVD88
- THE BASIS OF BEARINGS ARE STATE PLANE COORDINATE SYSTEM GRID BEARINGS SHOWN HEREON BETWEEN THE DESCRIBED THE MONUMENTS SHOWN HEREON.
- GRID DISTANCES ARE SHOWN, AS MEASURED IN THE FIELD, WITH TIES TO WELLS MEASURED PERPENDICULAR TO SECTION LINES.

I, TERRY D. SANDERS, A LICENSED PROFESSIONAL LAND SURVEYOR IN THE STATE OF COLORADO DO HEREBY CERTIFY TO **BAYSWATER EXPLORATION & PRODUCTION, LLC**, THAT THE SURVEY AND WELL LOCATION CERTIFICATE SHOWN HEREON WERE DONE BY ME OR UNDER MY DIRECT SUPERVISION AND THAT THE DRAWING SHOWN HEREON ACCURATELY DEPICTS THE PROPOSED LOCATION OF THE WELL. THIS CERTIFICATE DOES NOT REPRESENT A LAND SURVEY PLAT OR IMPROVEMENT SURVEY PLAT AS DEFINED BY C.R.S. 38-51-102 AND CANNOT BE RELIED UPON TO DETERMINE OWNERSHIP.

30120

TERRY D. SANDERS, PLS 30120
COLORADO LICENSED PROFESSIONAL LAND SURVEYOR
FOR AND ON BEHALF OF BAYSWATER EXPLORATION & PRODUCTION, LLC

PREPARED BY:



FIELD DATE:

03-20-12

DRAWING DATE:

04-04-12

BY:

MCH

SURFACE LOCATION:

NE 1/4 NW 1/4,

SEC. 23, T7N, R65W

WELD COUNTY, COLORADO

NOTICE: ACCORDING TO COLORADO LAW YOU MUST COMMENCE ANY LEGAL ACTION BASED UPON ANY DEFECT IN THIS SURVEY WITHIN THREE YEARS AFTER YOU FIRST DISCOVER SUCH DEFECT. IN NO EVENT MAY ANY ACTION BASED UPON ANY DEFECT IN THIS SURVEY BE COMMENCED MORE THAN TEN YEARS FROM THIS SAID DATE OF THIS CERTIFICATION SHOWN HEREON.