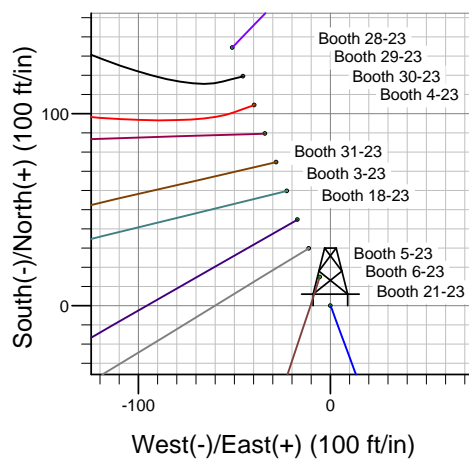
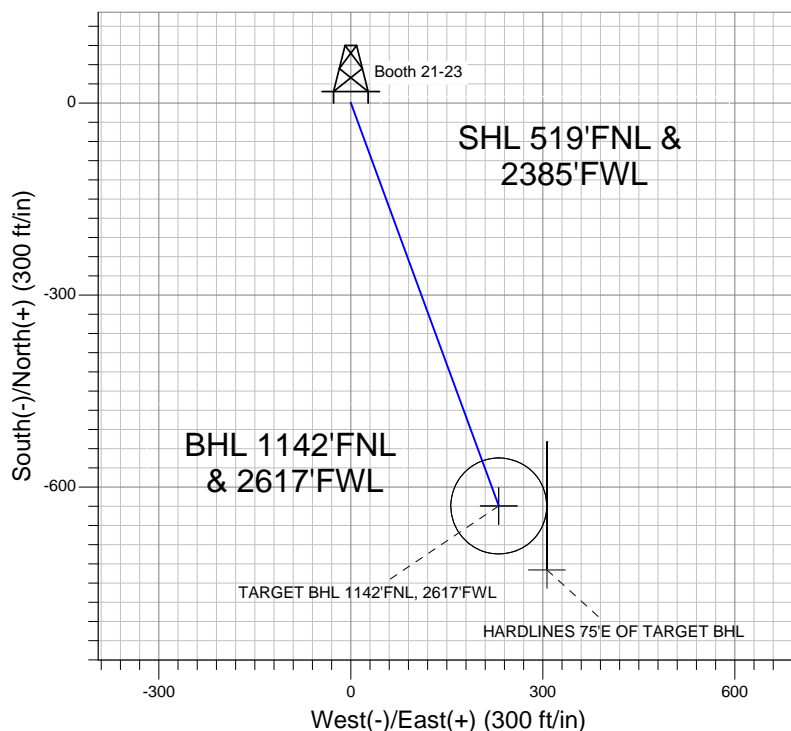
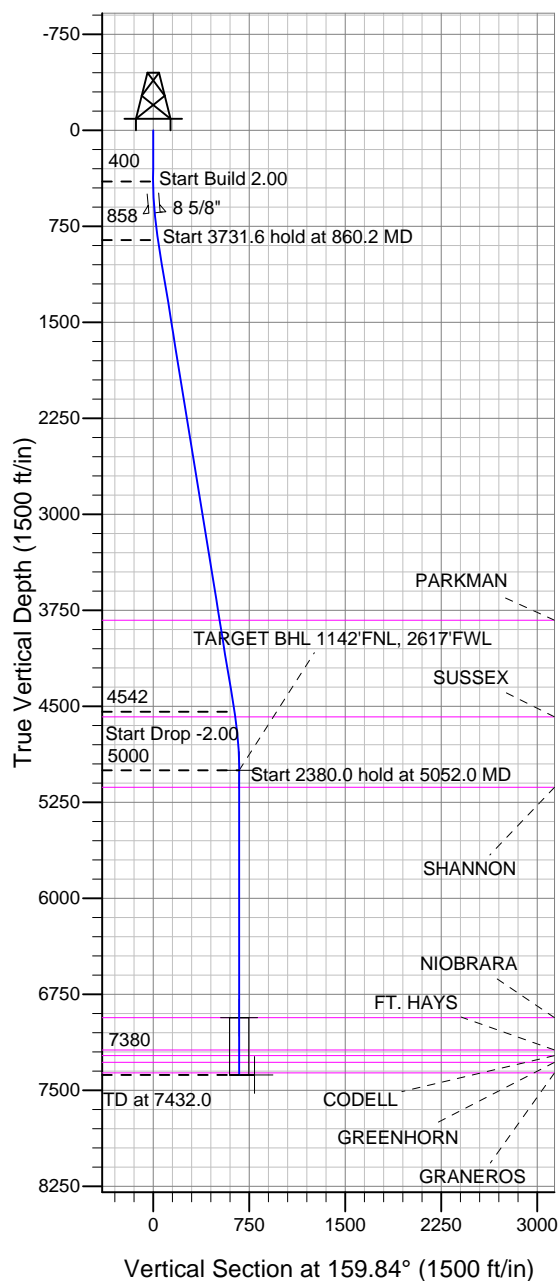


### Well Name: Booth 21-23

Surface Location: Booth 10 Pad Sec.23-T7N-R65W  
North American Datum 1983, US State Plane 1983 Colorado Northern Zone  
Ground Elevation: 4896.0

+N/-S	+E/-W	Northing	Easting	Latitude	Longitude	Slot
0.0	0.0	1449817.45	3241392.63	40.564902	-104.631145	
		Original Well Elev	WELL @ 4912.0ft (Original Well Elev)			

## BAYSWATER EXPLORATION & PRODUCTION



Booth 10 Pad Sec.23-T7N-R65W  
Booth 21-23  
Plan #1 (5-07-12)  
15:32, May 11 2012



Azimuths to True North  
Magnetic North: 8.69°  
Magnetic Field  
Strength: 53136.9snT  
Dip Angle: 67.18°  
Date: 5/7/2012  
Model: IGRF2010

### WELLBORE TARGET DETAILS (LAT/LONG)

Name	TVD	+N/-S	+E/-W	Latitude	Longitude	Shape
TARGET BHL 1142'FNL, 2617'FWL	5000.0	-629.5	231.2	40.563174	-104.630313	Point
TARGET CIRCLE 1142'FNL & 2617'FWL	6933.0	-629.5	231.2	40.563174	-104.630313	Circle (Radius: 75.0)
HARDLINES 75°E OF TARGET BHL	7380.0	-729.5	306.2	40.562900	-104.630043	Polygon

### SECTION DETAILS

Sec	MD	Inc	Azi	TVD	+N/-S	+E/-W	DLeg	TFace	VSec	Target
1	0.0	0.00	0.00	0.0	0.0	0.0	0.00	0.00	0.0	
2	400.0	0.00	0.00	400.0	0.0	0.0	0.00	0.00	0.0	
3	860.2	9.20	159.84	858.2	-34.6	12.7	2.00	159.84	36.9	
4	4591.8	9.20	159.84	4541.8	-594.9	218.5	0.00	0.00	633.8	
5	5052.0	0.00	0.00	5000.0	-629.5	231.2	2.00	180.00	670.6	
6	7432.0	0.00	0.00	7380.0	-629.5	231.2	0.00	0.00	670.6	TARGET BHL 1142'FNL, 2617'FWL



# **BAYSWATER EXPLORATION & PRODUCTION**

**SEC.23-T7N-R65W**

**Booth 10 Pad Sec.23-T7N-R65W**

**Booth 21-23**

**Wellbore #1**

**Plan: Plan #1 (5-07-12)**

## **Standard Planning Report**

**11 May, 2012**

<b>Database:</b>	Landmark	<b>Local Co-ordinate Reference:</b>	Well Booth 21-23
<b>Company:</b>	BAYSWATER EXPLORATION & PRODUCTION	<b>TVD Reference:</b>	WELL @ 4912.0ft (Original Well Elev)
<b>Project:</b>	SEC.23-T7N-R65W	<b>MD Reference:</b>	WELL @ 4912.0ft (Original Well Elev)
<b>Site:</b>	Booth 10 Pad Sec.23-T7N-R65W	<b>North Reference:</b>	True
<b>Well:</b>	Booth 21-23	<b>Survey Calculation Method:</b>	Minimum Curvature
<b>Wellbore:</b>	Wellbore #1		
<b>Design:</b>	Plan #1 (5-07-12)		

<b>Project</b>	SEC.23-T7N-R65W, Weld County, CO		
<b>Map System:</b>	US State Plane 1983	<b>System Datum:</b>	Mean Sea Level
<b>Geo Datum:</b>	North American Datum 1983		Using Well Reference Point
<b>Map Zone:</b>	Colorado Northern Zone		Using geodetic scale factor

<b>Site</b>	Booth 10 Pad Sec.23-T7N-R65W		
<b>Site Position:</b>		<b>Northing:</b>	1,449,951.39ft
<b>From:</b>	Lat/Long	<b>Easting:</b>	3,241,340.20ft
<b>Position Uncertainty:</b>	0.0 ft	<b>Slot Radius:</b>	"
		<b>Latitude:</b>	40.565271
		<b>Longitude:</b>	-104.631329
		<b>Grid Convergence:</b>	0.56 °

<b>Well</b>	Booth 21-23		
<b>Well Position</b>	<b>+N/-S</b>	-134.4 ft	<b>Northing:</b>
	<b>+E/-W</b>	51.1 ft	<b>Easting:</b>
<b>Position Uncertainty</b>		0.0 ft	<b>Wellhead Elevation:</b>
			ft
			<b>Latitude:</b>
			40.564902
			<b>Longitude:</b>
			-104.631145
			<b>Ground Level:</b>
			4,896.0 ft

<b>Wellbore</b>	Wellbore #1				
<b>Magnetics</b>	<b>Model Name</b>	<b>Sample Date</b>	<b>Declination (°)</b>	<b>Dip Angle (°)</b>	<b>Field Strength (nT)</b>
	IGRF2010	5/7/2012	8.69	67.18	53,137

<b>Design</b>	Plan #1 (5-07-12)			
<b>Audit Notes:</b>				
<b>Version:</b>	<b>Phase:</b>	PROTOTYPE	<b>Tie On Depth:</b>	0.0
<b>Vertical Section:</b>	<b>Depth From (TVD) (ft)</b>	<b>+N/-S (ft)</b>	<b>+E/-W (ft)</b>	<b>Direction (°)</b>
	0.0	0.0	0.0	159.84

<b>Plan Sections</b>										
<b>Measured Depth (ft)</b>	<b>Inclination (°)</b>	<b>Azimuth (°)</b>	<b>Vertical Depth (ft)</b>	<b>+N/-S (ft)</b>	<b>+E/-W (ft)</b>	<b>Dogleg Rate (°/100ft)</b>	<b>Build Rate (°/100ft)</b>	<b>Turn Rate (°/100ft)</b>	<b>TFO (°)</b>	<b>Target</b>
0.0	0.00	0.00	0.0	0.0	0.0	0.00	0.00	0.00	0.00	
400.0	0.00	0.00	400.0	0.0	0.0	0.00	0.00	0.00	0.00	
860.2	9.20	159.84	858.2	-34.6	12.7	2.00	2.00	0.00	159.84	
4,591.8	9.20	159.84	4,541.8	-594.9	218.5	0.00	0.00	0.00	0.00	
5,052.0	0.00	0.00	5,000.0	-629.5	231.2	2.00	-2.00	0.00	180.00	TARGET BHL 1142
7,432.0	0.00	0.00	7,380.0	-629.5	231.2	0.00	0.00	0.00	0.00	

<b>Database:</b>	Landmark	<b>Local Co-ordinate Reference:</b>	Well Booth 21-23
<b>Company:</b>	BAYSWATER EXPLORATION & PRODUCTION	<b>TVD Reference:</b>	WELL @ 4912.0ft (Original Well Elev)
<b>Project:</b>	SEC.23-T7N-R65W	<b>MD Reference:</b>	WELL @ 4912.0ft (Original Well Elev)
<b>Site:</b>	Booth 10 Pad Sec.23-T7N-R65W	<b>North Reference:</b>	True
<b>Well:</b>	Booth 21-23	<b>Survey Calculation Method:</b>	Minimum Curvature
<b>Wellbore:</b>	Wellbore #1		
<b>Design:</b>	Plan #1 (5-07-12)		

Planned Survey									
Measured Depth (ft)	Inclination (°)	Azimuth (°)	Vertical Depth (ft)	+N/-S (ft)	+E/-W (ft)	Vertical Section (ft)	Dogleg Rate (°/100ft)	Build Rate (°/100ft)	Turn Rate (°/100ft)
0.0	0.00	0.00	0.0	0.0	0.0	0.0	0.00	0.00	0.00
40.0	0.00	0.00	40.0	0.0	0.0	0.0	0.00	0.00	0.00
80.0	0.00	0.00	80.0	0.0	0.0	0.0	0.00	0.00	0.00
120.0	0.00	0.00	120.0	0.0	0.0	0.0	0.00	0.00	0.00
160.0	0.00	0.00	160.0	0.0	0.0	0.0	0.00	0.00	0.00
200.0	0.00	0.00	200.0	0.0	0.0	0.0	0.00	0.00	0.00
240.0	0.00	0.00	240.0	0.0	0.0	0.0	0.00	0.00	0.00
280.0	0.00	0.00	280.0	0.0	0.0	0.0	0.00	0.00	0.00
320.0	0.00	0.00	320.0	0.0	0.0	0.0	0.00	0.00	0.00
360.0	0.00	0.00	360.0	0.0	0.0	0.0	0.00	0.00	0.00
400.0	0.00	0.00	400.0	0.0	0.0	0.0	0.00	0.00	0.00
440.0	0.80	159.84	440.0	-0.3	0.1	0.3	2.00	2.00	0.00
480.0	1.60	159.84	480.0	-1.0	0.4	1.1	2.00	2.00	0.00
520.0	2.40	159.84	520.0	-2.4	0.9	2.5	2.00	2.00	0.00
560.0	3.20	159.84	559.9	-4.2	1.5	4.5	2.00	2.00	0.00
600.0	4.00	159.84	599.8	-6.6	2.4	7.0	2.00	2.00	0.00
640.0	4.80	159.84	639.7	-9.4	3.5	10.0	2.00	2.00	0.00
645.3	4.91	159.84	645.0	-9.9	3.6	10.5	2.00	2.00	0.00
8 5/8"									
680.0	5.60	159.84	679.6	-12.8	4.7	13.7	2.00	2.00	0.00
720.0	6.40	159.84	719.3	-16.8	6.2	17.9	2.00	2.00	0.00
760.0	7.20	159.84	759.1	-21.2	7.8	22.6	2.00	2.00	0.00
800.0	8.00	159.84	798.7	-26.2	9.6	27.9	2.00	2.00	0.00
840.0	8.80	159.84	838.3	-31.7	11.6	33.7	2.00	2.00	0.00
860.2	9.20	159.84	858.2	-34.6	12.7	36.9	2.00	2.00	0.00
880.0	9.20	159.84	877.8	-37.6	13.8	40.1	0.00	0.00	0.00
920.0	9.20	159.84	917.3	-43.6	16.0	46.4	0.00	0.00	0.00
960.0	9.20	159.84	956.7	-49.6	18.2	52.8	0.00	0.00	0.00
1,000.0	9.20	159.84	996.2	-55.6	20.4	59.2	0.00	0.00	0.00
1,040.0	9.20	159.84	1,035.7	-61.6	22.6	65.6	0.00	0.00	0.00
1,080.0	9.20	159.84	1,075.2	-67.6	24.8	72.0	0.00	0.00	0.00
1,120.0	9.20	159.84	1,114.7	-73.6	27.0	78.4	0.00	0.00	0.00
1,160.0	9.20	159.84	1,154.2	-79.6	29.2	84.8	0.00	0.00	0.00
1,200.0	9.20	159.84	1,193.6	-85.6	31.4	91.2	0.00	0.00	0.00
1,240.0	9.20	159.84	1,233.1	-91.6	33.7	97.6	0.00	0.00	0.00
1,280.0	9.20	159.84	1,272.6	-97.7	35.9	104.0	0.00	0.00	0.00
1,320.0	9.20	159.84	1,312.1	-103.7	38.1	110.4	0.00	0.00	0.00
1,360.0	9.20	159.84	1,351.6	-109.7	40.3	116.8	0.00	0.00	0.00
1,400.0	9.20	159.84	1,391.1	-115.7	42.5	123.2	0.00	0.00	0.00
1,440.0	9.20	159.84	1,430.6	-121.7	44.7	129.6	0.00	0.00	0.00
1,480.0	9.20	159.84	1,470.0	-127.7	46.9	136.0	0.00	0.00	0.00
1,520.0	9.20	159.84	1,509.5	-133.7	49.1	142.4	0.00	0.00	0.00
1,560.0	9.20	159.84	1,549.0	-139.7	51.3	148.8	0.00	0.00	0.00
1,600.0	9.20	159.84	1,588.5	-145.7	53.5	155.2	0.00	0.00	0.00
1,640.0	9.20	159.84	1,628.0	-151.7	55.7	161.6	0.00	0.00	0.00
1,680.0	9.20	159.84	1,667.5	-157.7	57.9	168.0	0.00	0.00	0.00
1,720.0	9.20	159.84	1,707.0	-163.7	60.1	174.4	0.00	0.00	0.00
1,760.0	9.20	159.84	1,746.4	-169.7	62.3	180.8	0.00	0.00	0.00
1,800.0	9.20	159.84	1,785.9	-175.7	64.5	187.2	0.00	0.00	0.00
1,840.0	9.20	159.84	1,825.4	-181.7	66.7	193.6	0.00	0.00	0.00
1,880.0	9.20	159.84	1,864.9	-187.7	68.9	200.0	0.00	0.00	0.00
1,920.0	9.20	159.84	1,904.4	-193.7	71.1	206.4	0.00	0.00	0.00
1,960.0	9.20	159.84	1,943.9	-199.8	73.4	212.8	0.00	0.00	0.00

<b>Database:</b>	Landmark	<b>Local Co-ordinate Reference:</b>	Well Booth 21-23
<b>Company:</b>	BAYSWATER EXPLORATION & PRODUCTION	<b>TVD Reference:</b>	WELL @ 4912.0ft (Original Well Elev)
<b>Project:</b>	SEC.23-T7N-R65W	<b>MD Reference:</b>	WELL @ 4912.0ft (Original Well Elev)
<b>Site:</b>	Booth 10 Pad Sec.23-T7N-R65W	<b>North Reference:</b>	True
<b>Well:</b>	Booth 21-23	<b>Survey Calculation Method:</b>	Minimum Curvature
<b>Wellbore:</b>	Wellbore #1		
<b>Design:</b>	Plan #1 (5-07-12)		

Planned Survey									
Measured Depth (ft)	Inclination (°)	Azimuth (°)	Vertical Depth (ft)	+N/-S (ft)	+E/-W (ft)	Vertical Section (ft)	Dogleg Rate (°/100ft)	Build Rate (°/100ft)	Turn Rate (°/100ft)
2,000.0	9.20	159.84	1,983.3	-205.8	75.6	219.2	0.00	0.00	0.00
2,040.0	9.20	159.84	2,022.8	-211.8	77.8	225.6	0.00	0.00	0.00
2,080.0	9.20	159.84	2,062.3	-217.8	80.0	232.0	0.00	0.00	0.00
2,120.0	9.20	159.84	2,101.8	-223.8	82.2	238.4	0.00	0.00	0.00
2,160.0	9.20	159.84	2,141.3	-229.8	84.4	244.8	0.00	0.00	0.00
2,200.0	9.20	159.84	2,180.8	-235.8	86.6	251.2	0.00	0.00	0.00
2,240.0	9.20	159.84	2,220.3	-241.8	88.8	257.6	0.00	0.00	0.00
2,280.0	9.20	159.84	2,259.7	-247.8	91.0	264.0	0.00	0.00	0.00
2,320.0	9.20	159.84	2,299.2	-253.8	93.2	270.4	0.00	0.00	0.00
2,360.0	9.20	159.84	2,338.7	-259.8	95.4	276.8	0.00	0.00	0.00
2,400.0	9.20	159.84	2,378.2	-265.8	97.6	283.2	0.00	0.00	0.00
2,440.0	9.20	159.84	2,417.7	-271.8	99.8	289.6	0.00	0.00	0.00
2,480.0	9.20	159.84	2,457.2	-277.8	102.0	296.0	0.00	0.00	0.00
2,520.0	9.20	159.84	2,496.7	-283.8	104.2	302.4	0.00	0.00	0.00
2,560.0	9.20	159.84	2,536.1	-289.8	106.4	308.8	0.00	0.00	0.00
2,600.0	9.20	159.84	2,575.6	-295.8	108.6	315.2	0.00	0.00	0.00
2,640.0	9.20	159.84	2,615.1	-301.9	110.8	321.6	0.00	0.00	0.00
2,680.0	9.20	159.84	2,654.6	-307.9	113.0	328.0	0.00	0.00	0.00
2,720.0	9.20	159.84	2,694.1	-313.9	115.3	334.4	0.00	0.00	0.00
2,760.0	9.20	159.84	2,733.6	-319.9	117.5	340.8	0.00	0.00	0.00
2,800.0	9.20	159.84	2,773.0	-325.9	119.7	347.2	0.00	0.00	0.00
2,840.0	9.20	159.84	2,812.5	-331.9	121.9	353.6	0.00	0.00	0.00
2,880.0	9.20	159.84	2,852.0	-337.9	124.1	360.0	0.00	0.00	0.00
2,920.0	9.20	159.84	2,891.5	-343.9	126.3	366.3	0.00	0.00	0.00
2,960.0	9.20	159.84	2,931.0	-349.9	128.5	372.7	0.00	0.00	0.00
3,000.0	9.20	159.84	2,970.5	-355.9	130.7	379.1	0.00	0.00	0.00
3,040.0	9.20	159.84	3,010.0	-361.9	132.9	385.5	0.00	0.00	0.00
3,080.0	9.20	159.84	3,049.4	-367.9	135.1	391.9	0.00	0.00	0.00
3,120.0	9.20	159.84	3,088.9	-373.9	137.3	398.3	0.00	0.00	0.00
3,160.0	9.20	159.84	3,128.4	-379.9	139.5	404.7	0.00	0.00	0.00
3,200.0	9.20	159.84	3,167.9	-385.9	141.7	411.1	0.00	0.00	0.00
3,240.0	9.20	159.84	3,207.4	-391.9	143.9	417.5	0.00	0.00	0.00
3,280.0	9.20	159.84	3,246.9	-397.9	146.1	423.9	0.00	0.00	0.00
3,320.0	9.20	159.84	3,286.4	-404.0	148.3	430.3	0.00	0.00	0.00
3,360.0	9.20	159.84	3,325.8	-410.0	150.5	436.7	0.00	0.00	0.00
3,400.0	9.20	159.84	3,365.3	-416.0	152.7	443.1	0.00	0.00	0.00
3,440.0	9.20	159.84	3,404.8	-422.0	155.0	449.5	0.00	0.00	0.00
3,480.0	9.20	159.84	3,444.3	-428.0	157.2	455.9	0.00	0.00	0.00
3,520.0	9.20	159.84	3,483.8	-434.0	159.4	462.3	0.00	0.00	0.00
3,560.0	9.20	159.84	3,523.3	-440.0	161.6	468.7	0.00	0.00	0.00
3,600.0	9.20	159.84	3,562.7	-446.0	163.8	475.1	0.00	0.00	0.00
3,640.0	9.20	159.84	3,602.2	-452.0	166.0	481.5	0.00	0.00	0.00
3,680.0	9.20	159.84	3,641.7	-458.0	168.2	487.9	0.00	0.00	0.00
3,720.0	9.20	159.84	3,681.2	-464.0	170.4	494.3	0.00	0.00	0.00
3,760.0	9.20	159.84	3,720.7	-470.0	172.6	500.7	0.00	0.00	0.00
3,800.0	9.20	159.84	3,760.2	-476.0	174.8	507.1	0.00	0.00	0.00
3,840.0	9.20	159.84	3,799.7	-482.0	177.0	513.5	0.00	0.00	0.00
3,868.7	9.20	159.84	3,828.0	-486.3	178.6	518.1	0.00	0.00	0.00
<b>PARKMAN</b>									
3,880.0	9.20	159.84	3,839.1	-488.0	179.2	519.9	0.00	0.00	0.00
3,920.0	9.20	159.84	3,878.6	-494.0	181.4	526.3	0.00	0.00	0.00
3,960.0	9.20	159.84	3,918.1	-500.1	183.6	532.7	0.00	0.00	0.00
4,000.0	9.20	159.84	3,957.6	-506.1	185.8	539.1	0.00	0.00	0.00

<b>Database:</b>	Landmark	<b>Local Co-ordinate Reference:</b>	Well Booth 21-23
<b>Company:</b>	BAYSWATER EXPLORATION & PRODUCTION	<b>TVD Reference:</b>	WELL @ 4912.0ft (Original Well Elev)
<b>Project:</b>	SEC.23-T7N-R65W	<b>MD Reference:</b>	WELL @ 4912.0ft (Original Well Elev)
<b>Site:</b>	Booth 10 Pad Sec.23-T7N-R65W	<b>North Reference:</b>	True
<b>Well:</b>	Booth 21-23	<b>Survey Calculation Method:</b>	Minimum Curvature
<b>Wellbore:</b>	Wellbore #1		
<b>Design:</b>	Plan #1 (5-07-12)		

Planned Survey									
Measured Depth (ft)	Inclination (°)	Azimuth (°)	Vertical Depth (ft)	+N/-S (ft)	+E/-W (ft)	Vertical Section (ft)	Dogleg Rate (°/100ft)	Build Rate (°/100ft)	Turn Rate (°/100ft)
4,040.0	9.20	159.84	3,997.1	-512.1	188.0	545.5	0.00	0.00	0.00
4,080.0	9.20	159.84	4,036.6	-518.1	190.2	551.9	0.00	0.00	0.00
4,120.0	9.20	159.84	4,076.1	-524.1	192.4	558.3	0.00	0.00	0.00
4,160.0	9.20	159.84	4,115.5	-530.1	194.6	564.7	0.00	0.00	0.00
4,200.0	9.20	159.84	4,155.0	-536.1	196.9	571.1	0.00	0.00	0.00
4,240.0	9.20	159.84	4,194.5	-542.1	199.1	577.5	0.00	0.00	0.00
4,280.0	9.20	159.84	4,234.0	-548.1	201.3	583.9	0.00	0.00	0.00
4,320.0	9.20	159.84	4,273.5	-554.1	203.5	590.3	0.00	0.00	0.00
4,360.0	9.20	159.84	4,313.0	-560.1	205.7	596.7	0.00	0.00	0.00
4,400.0	9.20	159.84	4,352.4	-566.1	207.9	603.1	0.00	0.00	0.00
4,440.0	9.20	159.84	4,391.9	-572.1	210.1	609.5	0.00	0.00	0.00
4,480.0	9.20	159.84	4,431.4	-578.1	212.3	615.9	0.00	0.00	0.00
4,520.0	9.20	159.84	4,470.9	-584.1	214.5	622.3	0.00	0.00	0.00
4,560.0	9.20	159.84	4,510.4	-590.1	216.7	628.7	0.00	0.00	0.00
4,591.8	9.20	159.84	4,541.8	-594.9	218.5	633.8	0.00	0.00	0.00
4,600.0	9.04	159.84	4,549.9	-596.1	218.9	635.1	2.00	-2.00	0.00
4,633.5	8.37	159.84	4,583.0	-600.9	220.7	640.1	2.00	-2.00	0.00
SUSSEX									
4,640.0	8.24	159.84	4,589.4	-601.8	221.0	641.1	2.00	-2.00	0.00
4,680.0	7.44	159.84	4,629.0	-606.9	222.9	646.5	2.00	-2.00	0.00
4,720.0	6.64	159.84	4,668.7	-611.5	224.5	651.4	2.00	-2.00	0.00
4,760.0	5.84	159.84	4,708.5	-615.6	226.0	655.8	2.00	-2.00	0.00
4,800.0	5.04	159.84	4,748.3	-619.1	227.4	659.6	2.00	-2.00	0.00
4,840.0	4.24	159.84	4,788.2	-622.2	228.5	662.8	2.00	-2.00	0.00
4,880.0	3.44	159.84	4,828.1	-624.7	229.4	665.5	2.00	-2.00	0.00
4,920.0	2.64	159.84	4,868.0	-626.7	230.1	667.6	2.00	-2.00	0.00
4,960.0	1.84	159.84	4,908.0	-628.1	230.7	669.2	2.00	-2.00	0.00
5,000.0	1.04	159.84	4,948.0	-629.1	231.0	670.2	2.00	-2.00	0.00
5,040.0	0.24	159.84	4,988.0	-629.5	231.2	670.6	2.00	-2.00	0.00
5,052.0	0.00	0.00	5,000.0	-629.5	231.2	670.6	2.00	-2.00	0.00
TARGET BHL 1142'FNL, 2617'FWL									
5,080.0	0.00	0.00	5,028.0	-629.5	231.2	670.6	0.00	0.00	0.00
5,120.0	0.00	0.00	5,068.0	-629.5	231.2	670.6	0.00	0.00	0.00
5,160.0	0.00	0.00	5,108.0	-629.5	231.2	670.6	0.00	0.00	0.00
5,185.0	0.00	0.00	5,133.0	-629.5	231.2	670.6	0.00	0.00	0.00
SHANNON									
5,200.0	0.00	0.00	5,148.0	-629.5	231.2	670.6	0.00	0.00	0.00
5,240.0	0.00	0.00	5,188.0	-629.5	231.2	670.6	0.00	0.00	0.00
5,280.0	0.00	0.00	5,228.0	-629.5	231.2	670.6	0.00	0.00	0.00
5,320.0	0.00	0.00	5,268.0	-629.5	231.2	670.6	0.00	0.00	0.00
5,360.0	0.00	0.00	5,308.0	-629.5	231.2	670.6	0.00	0.00	0.00
5,400.0	0.00	0.00	5,348.0	-629.5	231.2	670.6	0.00	0.00	0.00
5,440.0	0.00	0.00	5,388.0	-629.5	231.2	670.6	0.00	0.00	0.00
5,480.0	0.00	0.00	5,428.0	-629.5	231.2	670.6	0.00	0.00	0.00
5,520.0	0.00	0.00	5,468.0	-629.5	231.2	670.6	0.00	0.00	0.00
5,560.0	0.00	0.00	5,508.0	-629.5	231.2	670.6	0.00	0.00	0.00
5,600.0	0.00	0.00	5,548.0	-629.5	231.2	670.6	0.00	0.00	0.00
5,640.0	0.00	0.00	5,588.0	-629.5	231.2	670.6	0.00	0.00	0.00
5,680.0	0.00	0.00	5,628.0	-629.5	231.2	670.6	0.00	0.00	0.00
5,720.0	0.00	0.00	5,668.0	-629.5	231.2	670.6	0.00	0.00	0.00
5,760.0	0.00	0.00	5,708.0	-629.5	231.2	670.6	0.00	0.00	0.00
5,800.0	0.00	0.00	5,748.0	-629.5	231.2	670.6	0.00	0.00	0.00
5,840.0	0.00	0.00	5,788.0	-629.5	231.2	670.6	0.00	0.00	0.00

<b>Database:</b>	Landmark	<b>Local Co-ordinate Reference:</b>	Well Booth 21-23
<b>Company:</b>	BAYSWATER EXPLORATION & PRODUCTION	<b>TVD Reference:</b>	WELL @ 4912.0ft (Original Well Elev)
<b>Project:</b>	SEC.23-T7N-R65W	<b>MD Reference:</b>	WELL @ 4912.0ft (Original Well Elev)
<b>Site:</b>	Booth 10 Pad Sec.23-T7N-R65W	<b>North Reference:</b>	True
<b>Well:</b>	Booth 21-23	<b>Survey Calculation Method:</b>	Minimum Curvature
<b>Wellbore:</b>	Wellbore #1		
<b>Design:</b>	Plan #1 (5-07-12)		

Planned Survey									
Measured Depth (ft)	Inclination (°)	Azimuth (°)	Vertical Depth (ft)	+N/-S (ft)	+E/-W (ft)	Vertical Section (ft)	Dogleg Rate (°/100ft)	Build Rate (°/100ft)	Turn Rate (°/100ft)
5,880.0	0.00	0.00	5,828.0	-629.5	231.2	670.6	0.00	0.00	0.00
5,920.0	0.00	0.00	5,868.0	-629.5	231.2	670.6	0.00	0.00	0.00
5,960.0	0.00	0.00	5,908.0	-629.5	231.2	670.6	0.00	0.00	0.00
6,000.0	0.00	0.00	5,948.0	-629.5	231.2	670.6	0.00	0.00	0.00
6,040.0	0.00	0.00	5,988.0	-629.5	231.2	670.6	0.00	0.00	0.00
6,080.0	0.00	0.00	6,028.0	-629.5	231.2	670.6	0.00	0.00	0.00
6,120.0	0.00	0.00	6,068.0	-629.5	231.2	670.6	0.00	0.00	0.00
6,160.0	0.00	0.00	6,108.0	-629.5	231.2	670.6	0.00	0.00	0.00
6,200.0	0.00	0.00	6,148.0	-629.5	231.2	670.6	0.00	0.00	0.00
6,240.0	0.00	0.00	6,188.0	-629.5	231.2	670.6	0.00	0.00	0.00
6,280.0	0.00	0.00	6,228.0	-629.5	231.2	670.6	0.00	0.00	0.00
6,320.0	0.00	0.00	6,268.0	-629.5	231.2	670.6	0.00	0.00	0.00
6,360.0	0.00	0.00	6,308.0	-629.5	231.2	670.6	0.00	0.00	0.00
6,400.0	0.00	0.00	6,348.0	-629.5	231.2	670.6	0.00	0.00	0.00
6,440.0	0.00	0.00	6,388.0	-629.5	231.2	670.6	0.00	0.00	0.00
6,480.0	0.00	0.00	6,428.0	-629.5	231.2	670.6	0.00	0.00	0.00
6,520.0	0.00	0.00	6,468.0	-629.5	231.2	670.6	0.00	0.00	0.00
6,560.0	0.00	0.00	6,508.0	-629.5	231.2	670.6	0.00	0.00	0.00
6,600.0	0.00	0.00	6,548.0	-629.5	231.2	670.6	0.00	0.00	0.00
6,640.0	0.00	0.00	6,588.0	-629.5	231.2	670.6	0.00	0.00	0.00
6,680.0	0.00	0.00	6,628.0	-629.5	231.2	670.6	0.00	0.00	0.00
6,720.0	0.00	0.00	6,668.0	-629.5	231.2	670.6	0.00	0.00	0.00
6,760.0	0.00	0.00	6,708.0	-629.5	231.2	670.6	0.00	0.00	0.00
6,800.0	0.00	0.00	6,748.0	-629.5	231.2	670.6	0.00	0.00	0.00
6,840.0	0.00	0.00	6,788.0	-629.5	231.2	670.6	0.00	0.00	0.00
6,880.0	0.00	0.00	6,828.0	-629.5	231.2	670.6	0.00	0.00	0.00
6,920.0	0.00	0.00	6,868.0	-629.5	231.2	670.6	0.00	0.00	0.00
6,960.0	0.00	0.00	6,908.0	-629.5	231.2	670.6	0.00	0.00	0.00
6,985.0	0.00	0.00	6,933.0	-629.5	231.2	670.6	0.00	0.00	0.00
NIOBRARA - TARGET CIRCLE 1142'FNL & 2617'FWL									
7,000.0	0.00	0.00	6,948.0	-629.5	231.2	670.6	0.00	0.00	0.00
7,040.0	0.00	0.00	6,988.0	-629.5	231.2	670.6	0.00	0.00	0.00
7,080.0	0.00	0.00	7,028.0	-629.5	231.2	670.6	0.00	0.00	0.00
7,120.0	0.00	0.00	7,068.0	-629.5	231.2	670.6	0.00	0.00	0.00
7,160.0	0.00	0.00	7,108.0	-629.5	231.2	670.6	0.00	0.00	0.00
7,200.0	0.00	0.00	7,148.0	-629.5	231.2	670.6	0.00	0.00	0.00
7,237.0	0.00	0.00	7,185.0	-629.5	231.2	670.6	0.00	0.00	0.00
FT. HAYS									
7,240.0	0.00	0.00	7,188.0	-629.5	231.2	670.6	0.00	0.00	0.00
7,280.0	0.00	0.00	7,228.0	-629.5	231.2	670.6	0.00	0.00	0.00
7,281.0	0.00	0.00	7,229.0	-629.5	231.2	670.6	0.00	0.00	0.00
CODELL									
7,320.0	0.00	0.00	7,268.0	-629.5	231.2	670.6	0.00	0.00	0.00
7,333.0	0.00	0.00	7,281.0	-629.5	231.2	670.6	0.00	0.00	0.00
GREENHORN									
7,360.0	0.00	0.00	7,308.0	-629.5	231.2	670.6	0.00	0.00	0.00
7,400.0	0.00	0.00	7,348.0	-629.5	231.2	670.6	0.00	0.00	0.00
7,415.0	0.00	0.00	7,363.0	-629.5	231.2	670.6	0.00	0.00	0.00
GRANEROS									
7,432.0	0.00	0.00	7,380.0	-629.5	231.2	670.6	0.00	0.00	0.00
HARDLINES 75'E OF TARGET BHL									

<b>Database:</b>	Landmark	<b>Local Co-ordinate Reference:</b>	Well Booth 21-23
<b>Company:</b>	BAYSWATER EXPLORATION & PRODUCTION	<b>TVD Reference:</b>	WELL @ 4912.0ft (Original Well Elev)
<b>Project:</b>	SEC.23-T7N-R65W	<b>MD Reference:</b>	WELL @ 4912.0ft (Original Well Elev)
<b>Site:</b>	Booth 10 Pad Sec.23-T7N-R65W	<b>North Reference:</b>	True
<b>Well:</b>	Booth 21-23	<b>Survey Calculation Method:</b>	Minimum Curvature
<b>Wellbore:</b>	Wellbore #1		
<b>Design:</b>	Plan #1 (5-07-12)		

Targets									
Target Name									
- hit/miss target	Dip Angle	Dip Dir.	TVD	+N/-S	+E/-W	Northing	Easting	Latitude	Longitude
- Shape	(°)	(°)	(ft)	(ft)	(ft)	(ft)	(ft)		
TARGET CIRCLE 114	0.00	0.00	6,933.0	-629.5	231.2	1,449,190.23	3,241,629.95	40.563174	-104.630313
- plan hits target center									
- Circle (radius 75.0)									
HARDLINES 75'E OF	0.00	0.00	7,380.0	-729.5	306.2	1,449,091.01	3,241,705.95	40.562900	-104.630043
- plan misses target center by 125.0ft at 7432.0ft MD (7380.0 TVD, -629.5 N, 231.2 E)									
- Polygon									
Point 1			7,380.0	0.0	0.0	1,449,091.01	3,241,705.95		
Point 2			7,380.0	200.0	0.0	1,449,290.99	3,241,704.00		
TARGET BHL 1142'F	0.00	0.00	5,000.0	-629.5	231.2	1,449,190.23	3,241,629.95	40.563174	-104.630313
- plan hits target center									
- Point									

Casing Points					
	Measured Depth	Vertical Depth		Casing Diameter	Hole Diameter
	(ft)	(ft)	Name	(")	(")
	645.3	645.0	8 5/8"	8-5/8	12-1/4

Formations						
	Measured Depth	Vertical Depth			Dip	Dip Direction
	(ft)	(ft)	Name	Lithology	(°)	(°)
	3,868.7	3,828.0	PARKMAN		0.00	
	4,633.5	4,583.0	SUSSEX		0.00	
	5,185.0	5,133.0	SHANNON		0.00	
	6,985.0	6,933.0	NIOBRARA		0.00	
	7,237.0	7,185.0	FT. HAYS		0.00	
	7,281.0	7,229.0	CODELL		0.00	
	7,333.0	7,281.0	GREENHORN		0.00	
	7,415.0	7,363.0	GRANEROS		0.00	





# **BAYSWATER EXPLORATION & PRODUCTION**

**SEC.23-T7N-R65W**

**Booth 10 Pad Sec.23-T7N-R65W**

**Booth 21-23**

**Wellbore #1**

**Plan #1 (5-07-12)**

## **Anticollision Report**

**11 May, 2012**

<b>Company:</b>	BAYSWATER EXPLORATION & PRODUCTION	<b>Local Co-ordinate Reference:</b>	Well Booth 21-23
<b>Project:</b>	SEC.23-T7N-R65W	<b>TVD Reference:</b>	WELL @ 4912.0ft (Original Well Elev)
<b>Reference Site:</b>	Booth 10 Pad Sec.23-T7N-R65W	<b>MD Reference:</b>	WELL @ 4912.0ft (Original Well Elev)
<b>Site Error:</b>	0.0ft	<b>North Reference:</b>	True
<b>Reference Well:</b>	Booth 21-23	<b>Survey Calculation Method:</b>	Minimum Curvature
<b>Well Error:</b>	0.0ft	<b>Output errors are at</b>	2.00 sigma
<b>Reference Wellbore</b>	Wellbore #1	<b>Database:</b>	Landmark
<b>Reference Design:</b>	Plan #1 (5-07-12)	<b>Offset TVD Reference:</b>	Offset Datum

<b>Reference</b>	Plan #1 (5-07-12)		
<b>Filter type:</b>	NO GLOBAL FILTER: Using user defined selection & filtering criteria		
<b>Interpolation Method:</b>	MD Interval 100.0ft	<b>Error Model:</b>	ISCWSA
<b>Depth Range:</b>	Unlimited	<b>Scan Method:</b>	Closest Approach 3D
<b>Results Limited by:</b>	Maximum center-center distance of 10,000.0ft	<b>Error Surface:</b>	Elliptical Conic
<b>Warning Levels Evaluated at:</b>	2.00 Sigma		

<b>Survey Tool Program</b>	<b>Date</b> 5/7/2012			
<b>From (ft)</b>	<b>To (ft)</b>	<b>Survey (Wellbore)</b>	<b>Tool Name</b>	<b>Description</b>
0.0	7,432.0	Plan #1 (5-07-12) (Wellbore #1)	MWD	MWD - Standard

<b>Summary</b>						
<b>Site Name</b>	<b>Reference Measured Depth (ft)</b>	<b>Offset Measured Depth (ft)</b>	<b>Distance Between Centres (ft)</b>	<b>Distance Between Ellipses (ft)</b>	<b>Separation Factor</b>	<b>Warning</b>
<b>Offset Well - Wellbore - Design</b>						
Booth 10 Pad Sec.23-T7N-R65W						
Booth 6-23 - Wellbore #1 - Plan #1 (5-07-12)	400.0	400.0	15.9	14.4	10.127	CC, ES
Booth 6-23 - Wellbore #1 - Plan #1 (5-07-12)	500.0	500.0	17.7	15.7	8.836	SF

<b>Offset Design</b> Booth 10 Pad Sec.23-T7N-R65W - Booth 6-23 - Wellbore #1 - Plan #1 (5-07-12)												
Survey Program: 0-MWD												
<b>Reference Measured Depth (ft)</b>	<b>Vertical Depth (ft)</b>	<b>Offset Measured Depth (ft)</b>	<b>Vertical Depth (ft)</b>	<b>Semi Major Axis Reference (ft)</b>	<b>Offset (ft)</b>	<b>Highside Toolface (°)</b>	<b>Offset Wellbore Centre +N/-S (ft)</b>	<b>+E/-W (ft)</b>	<b>Distance Between Centres (ft)</b>	<b>Distance Between Ellipses (ft)</b>	<b>Minimum Separation (ft)</b>	<b>Separation Factor</b>
0.0	0.0	0.0	0.0	0.0	0.0	-20.41	14.9	-5.6	15.9	15.9	0.00	N/A
100.0	100.0	100.0	100.0	0.1	0.1	-20.41	14.9	-5.6	15.9	15.7	0.22	70.890
200.0	200.0	200.0	200.0	0.3	0.3	-20.41	14.9	-5.6	15.9	15.3	0.67	23.630
300.0	300.0	300.0	300.0	0.6	0.6	-20.41	14.9	-5.6	15.9	14.8	1.12	14.178
400.0	400.0	400.0	400.0	0.8	0.8	-20.41	14.9	-5.6	15.9	14.4	1.57	10.127 CC, ES
500.0	500.0	500.0	500.0	1.0	1.0	179.78	14.9	-5.6	17.7	15.7	2.00	8.836 SF
600.0	599.8	599.8	599.8	1.2	1.2	179.83	14.9	-5.6	22.9	20.5	2.42	9.475
700.0	699.5	699.5	699.5	1.4	1.5	179.87	14.9	-5.6	31.6	28.8	2.85	11.111
800.0	798.7	798.7	798.7	1.7	1.7	179.91	14.9	-5.6	43.8	40.5	3.28	13.353
900.0	897.5	899.1	899.1	2.0	1.9	178.87	13.3	-6.1	57.9	54.2	3.69	15.675
1,000.0	996.2	1,000.0	999.8	2.3	2.1	176.36	8.3	-7.8	69.9	65.9	4.09	17.095
1,100.0	1,094.9	1,101.3	1,100.8	2.6	2.3	172.81	-0.1	-10.5	79.6	75.1	4.52	17.611
1,200.0	1,193.6	1,202.8	1,201.5	3.0	2.5	168.29	-11.9	-14.4	87.2	82.2	4.99	17.472
1,300.0	1,292.4	1,304.2	1,301.6	3.4	2.8	162.74	-27.1	-19.5	93.2	87.7	5.52	16.870
1,400.0	1,391.1	1,405.3	1,400.8	3.7	3.1	156.12	-45.5	-25.6	98.2	92.1	6.15	15.970
1,500.0	1,489.8	1,505.7	1,498.6	4.1	3.5	148.44	-67.2	-32.7	103.1	96.2	6.90	14.950
1,600.0	1,588.5	1,605.3	1,594.7	4.5	3.9	139.86	-91.8	-40.9	108.9	101.1	7.78	14.003
1,700.0	1,687.2	1,703.6	1,689.1	4.8	4.4	131.42	-117.9	-49.6	116.7	108.0	8.74	13.360
1,800.0	1,785.9	1,801.9	1,783.4	5.2	4.8	124.14	-144.0	-58.2	126.8	117.1	9.70	13.073
1,900.0	1,884.6	1,900.1	1,877.8	5.6	5.4	118.00	-170.2	-66.9	138.6	128.0	10.64	13.031
2,000.0	1,983.3	1,998.4	1,972.1	6.0	5.9	112.85	-196.3	-75.5	151.8	140.2	11.55	13.146
2,100.0	2,082.1	2,096.7	2,066.5	6.4	6.4	108.54	-222.4	-84.2	166.0	153.6	12.42	13.360
2,200.0	2,180.8	2,194.9	2,160.8	6.7	6.9	104.92	-248.5	-92.8	181.0	167.7	13.28	13.630
2,300.0	2,279.5	2,293.2	2,255.1	7.1	7.5	101.86	-274.7	-101.5	196.5	182.4	14.11	13.931

CC - Min centre to center distance or convergent point, SF - min separation factor, ES - min ellipse separation

<b>Company:</b>	BAYSWATER EXPLORATION & PRODUCTION	<b>Local Co-ordinate Reference:</b>	Well Booth 21-23
<b>Project:</b>	SEC.23-T7N-R65W	<b>TVD Reference:</b>	WELL @ 4912.0ft (Original Well Elev)
<b>Reference Site:</b>	Booth 10 Pad Sec.23-T7N-R65W	<b>MD Reference:</b>	WELL @ 4912.0ft (Original Well Elev)
<b>Site Error:</b>	0.0ft	<b>North Reference:</b>	True
<b>Reference Well:</b>	Booth 21-23	<b>Survey Calculation Method:</b>	Minimum Curvature
<b>Well Error:</b>	0.0ft	<b>Output errors are at</b>	2.00 sigma
<b>Reference Wellbore</b>	Wellbore #1	<b>Database:</b>	Landmark
<b>Reference Design:</b>	Plan #1 (5-07-12)	<b>Offset TVD Reference:</b>	Offset Datum

Offset Design Booth 10 Pad Sec.23-T7N-R65W - Booth 6-23 - Wellbore #1 - Plan #1 (5-07-12)													Offset Site Error:	0.0 ft
Survey Program: 0-MWD													Offset Well Error:	0.0 ft
Measured Depth (ft)	Vertical Depth (ft)	Measured Depth (ft)	Vertical Depth (ft)	Reference	Offset	Semi Major Axis	Highside Toolface (°)	Offset Wellbore Centre +N/-S (ft)	Offset Wellbore Centre +E/-W (ft)	Between Centres (ft)	Between Ellipses (ft)	Minimum Separation (ft)	Separation Factor	Warning
2,400.0	2,378.2	2,391.5	2,349.5	7.5	8.0	99.24		-300.8	-110.1	212.6	197.7	14.92	14.245	
2,500.0	2,476.9	2,489.8	2,443.8	7.9	8.6	97.00		-326.9	-118.8	229.0	213.3	15.73	14.562	
2,600.0	2,575.6	2,588.0	2,538.1	8.3	9.1	95.06		-353.0	-127.4	245.8	229.2	16.52	14.874	
2,700.0	2,674.3	2,686.3	2,632.5	8.6	9.7	93.36		-379.1	-136.1	262.7	245.4	17.31	15.179	
2,800.0	2,773.0	2,784.6	2,726.8	9.0	10.2	91.87		-405.3	-144.7	279.9	261.8	18.09	15.472	
2,900.0	2,871.8	2,882.8	2,821.2	9.4	10.8	90.56		-431.4	-153.4	297.2	278.3	18.87	15.754	
3,000.0	2,970.5	2,981.1	2,915.5	9.8	11.4	89.38		-457.5	-162.0	314.7	295.0	19.64	16.023	
3,100.0	3,069.2	3,079.4	3,009.8	10.2	11.9	88.33		-483.6	-170.7	332.3	311.8	20.41	16.279	
3,200.0	3,167.9	3,177.6	3,104.2	10.6	12.5	87.39		-509.7	-179.3	349.9	328.8	21.18	16.523	
3,300.0	3,266.6	3,275.9	3,198.5	10.9	13.0	86.54		-535.9	-188.0	367.7	345.7	21.95	16.755	
3,400.0	3,365.3	3,374.2	3,292.9	11.3	13.6	85.76		-562.0	-196.6	385.5	362.8	22.71	16.976	
3,500.0	3,464.0	3,472.4	3,387.2	11.7	14.2	85.06		-588.1	-205.3	403.4	379.9	23.47	17.185	
3,600.0	3,562.7	3,570.7	3,481.5	12.1	14.7	84.41		-614.2	-213.9	421.4	397.1	24.24	17.385	
3,700.0	3,661.5	3,669.0	3,575.9	12.5	15.3	83.82		-640.4	-222.6	439.4	414.4	25.00	17.574	
3,800.0	3,760.2	3,767.3	3,670.2	12.8	15.9	83.27		-666.5	-231.2	457.4	431.6	25.76	17.755	
3,900.0	3,858.9	3,865.5	3,764.5	13.2	16.4	82.77		-692.6	-239.9	475.5	449.0	26.52	17.926	
4,000.0	3,957.6	3,963.8	3,858.9	13.6	17.0	82.30		-718.7	-248.5	493.6	466.3	27.29	18.090	
4,100.0	4,056.3	4,062.1	3,953.2	14.0	17.6	81.86		-744.8	-257.2	511.7	483.7	28.05	18.246	
4,200.0	4,155.0	4,160.3	4,047.6	14.4	18.1	81.46		-771.0	-265.8	529.9	501.1	28.81	18.395	
4,300.0	4,253.7	4,258.6	4,141.9	14.8	18.7	81.08		-797.1	-274.5	548.1	518.5	29.57	18.537	
4,400.0	4,352.4	4,356.9	4,236.2	15.1	19.3	80.73		-823.2	-283.1	566.3	536.0	30.33	18.673	
4,500.0	4,451.2	4,455.1	4,330.6	15.5	19.8	80.39		-849.3	-291.8	584.5	553.4	31.09	18.803	
4,600.0	4,549.9	4,553.4	4,424.9	15.9	20.4	80.11		-875.4	-300.4	602.8	570.9	31.85	18.928	
4,700.0	4,648.9	4,651.5	4,519.1	16.2	21.0	80.00		-901.5	-309.1	621.4	588.9	32.50	19.122	
4,800.0	4,748.3	4,749.3	4,613.0	16.4	21.5	79.63		-927.5	-317.7	640.7	607.6	33.06	19.380	
4,900.0	4,848.1	4,846.6	4,706.4	16.6	22.1	79.02		-953.4	-326.2	660.7	627.2	33.54	19.703	
5,000.0	4,948.0	4,943.3	4,799.2	16.7	22.7	78.20		-979.1	-334.8	681.7	647.8	33.92	20.094	
5,100.0	5,048.0	5,039.4	4,891.5	16.8	23.2	-123.15		-1,004.6	-343.2	703.6	669.4	34.22	20.565	
5,200.0	5,148.0	5,135.4	4,983.6	17.0	23.8	-124.50		-1,030.1	-351.7	726.1	691.6	34.44	21.082	
5,300.0	5,248.0	5,253.6	5,097.6	17.1	24.3	-125.98		-1,059.8	-361.5	747.7	713.1	34.62	21.596	
5,400.0	5,348.0	5,378.2	5,219.0	17.2	24.7	-127.22		-1,086.4	-370.3	766.2	731.4	34.80	22.015	
5,500.0	5,448.0	5,505.1	5,343.9	17.3	25.1	-128.18		-1,108.2	-377.5	781.3	746.3	35.01	22.314	
5,600.0	5,548.0	5,633.9	5,471.4	17.4	25.4	-128.89		-1,124.9	-383.1	792.8	757.6	35.25	22.491	
5,700.0	5,648.0	5,764.0	5,601.0	17.6	25.7	-129.35		-1,136.3	-386.8	800.6	765.1	35.51	22.546	
5,800.0	5,748.0	5,895.0	5,731.8	17.7	25.9	-129.58		-1,142.1	-388.7	804.5	768.7	35.79	22.481	
5,900.0	5,848.0	6,011.2	5,848.0	17.8	26.0	-129.62		-1,142.9	-389.0	805.1	769.0	36.07	22.317	
6,000.0	5,948.0	6,111.2	5,948.0	18.0	26.1	-129.62		-1,142.9	-389.0	805.1	768.7	36.33	22.158	
6,100.0	6,048.0	6,211.2	6,048.0	18.1	26.2	-129.62		-1,142.9	-389.0	805.1	768.5	36.59	21.999	
6,200.0	6,148.0	6,311.2	6,148.0	18.2	26.3	-129.62		-1,142.9	-389.0	805.1	768.2	36.86	21.841	
6,300.0	6,248.0	6,411.2	6,248.0	18.4	26.3	-129.62		-1,142.9	-389.0	805.1	767.9	37.13	21.682	
6,400.0	6,348.0	6,511.2	6,348.0	18.5	26.4	-129.62		-1,142.9	-389.0	805.1	767.7	37.40	21.524	
6,500.0	6,448.0	6,611.2	6,448.0	18.6	26.5	-129.62		-1,142.9	-389.0	805.1	767.4	37.68	21.366	
6,600.0	6,548.0	6,711.2	6,548.0	18.8	26.6	-129.62		-1,142.9	-389.0	805.1	767.1	37.96	21.209	
6,700.0	6,648.0	6,811.2	6,648.0	18.9	26.7	-129.62		-1,142.9	-389.0	805.1	766.8	38.24	21.052	
6,800.0	6,748.0	6,911.2	6,748.0	19.1	26.8	-129.62		-1,142.9	-389.0	805.1	766.5	38.53	20.896	
6,900.0	6,848.0	7,011.2	6,848.0	19.2	26.9	-129.62		-1,142.9	-389.0	805.1	766.2	38.82	20.740	
7,000.0	6,948.0	7,111.2	6,948.0	19.4	27.0	-129.62		-1,142.9	-389.0	805.1	765.9	39.11	20.585	
7,100.0	7,048.0	7,211.2	7,048.0	19.5	27.1	-129.62		-1,142.9	-389.0	805.1	765.7	39.40	20.431	
7,200.0	7,148.0	7,311.2	7,148.0	19.7	27.2	-129.62		-1,142.9	-389.0	805.1	765.4	39.70	20.278	
7,300.0	7,248.0	7,411.2	7,248.0	19.8	27.3	-129.62		-1,142.9	-389.0	805.1	765.1	40.00	20.126	
7,400.0	7,348.0	7,511.2	7,348.0	20.0	27.5	-129.62		-1,142.9	-389.0	805.1	764.7	40.30	19.974	

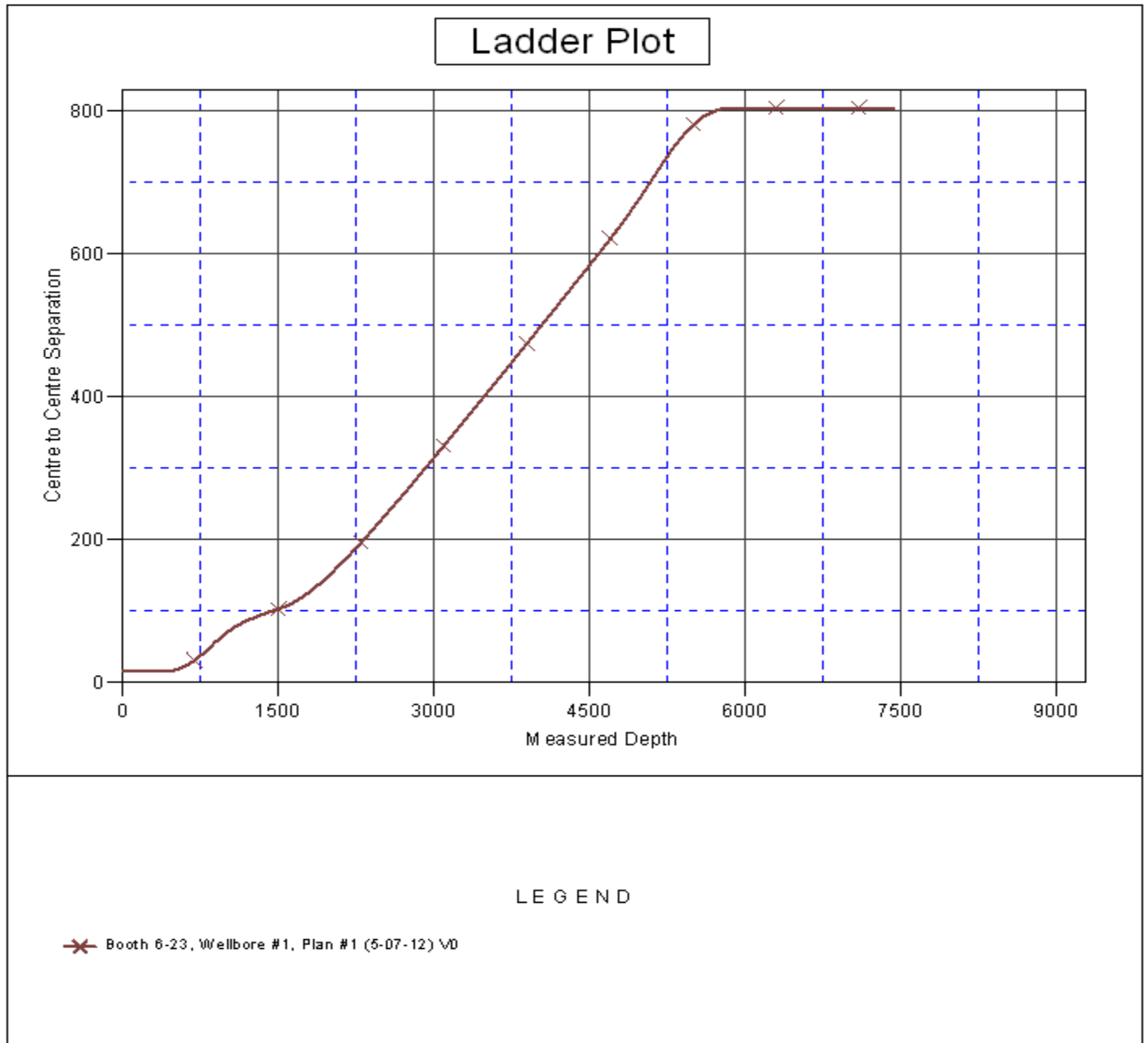
CC - Min centre to center distance or convergent point, SF - min separation factor, ES - min ellipse separation

<b>Company:</b>	BAYSWATER EXPLORATION & PRODUCTION	<b>Local Co-ordinate Reference:</b>	Well Booth 21-23
<b>Project:</b>	SEC.23-T7N-R65W	<b>TVD Reference:</b>	WELL @ 4912.0ft (Original Well Elev)
<b>Reference Site:</b>	Booth 10 Pad Sec.23-T7N-R65W	<b>MD Reference:</b>	WELL @ 4912.0ft (Original Well Elev)
<b>Site Error:</b>	0.0ft	<b>North Reference:</b>	True
<b>Reference Well:</b>	Booth 21-23	<b>Survey Calculation Method:</b>	Minimum Curvature
<b>Well Error:</b>	0.0ft	<b>Output errors are at</b>	2.00 sigma
<b>Reference Wellbore</b>	Wellbore #1	<b>Database:</b>	Landmark
<b>Reference Design:</b>	Plan #1 (5-07-12)	<b>Offset TVD Reference:</b>	Offset Datum

<b>Offset Design</b> Booth 10 Pad Sec.23-T7N-R65W - Booth 6-23 - Wellbore #1 - Plan #1 (5-07-12)												<b>Offset Site Error:</b>	0.0 ft
Survey Program: 0-MWD												<b>Offset Well Error:</b>	0.0 ft
Reference	Offset	Semi Major Axis		Distance									
Measured Depth (ft)	Vertical Depth (ft)	Measured Depth (ft)	Vertical Depth (ft)	Reference (ft)	Offset (ft)	Highside Toolface (°)	Offset Wellbore Centre +N/-S (ft)	+E/-W (ft)	Between Centres (ft)	Between Ellipses (ft)	Minimum Separation (ft)	Separation Factor	Warning
7,432.0	7,380.0	7,543.2	7,380.0	20.0	27.5	-129.62	-1,142.9	-389.0	805.1	764.7	40.40	19.926	

<b>Company:</b>	BAYSWATER EXPLORATION & PRODUCTION	<b>Local Co-ordinate Reference:</b>	Well Booth 21-23
<b>Project:</b>	SEC.23-T7N-R65W	<b>TVD Reference:</b>	WELL @ 4912.0ft (Original Well Elev)
<b>Reference Site:</b>	Booth 10 Pad Sec.23-T7N-R65W	<b>MD Reference:</b>	WELL @ 4912.0ft (Original Well Elev)
<b>Site Error:</b>	0.0ft	<b>North Reference:</b>	True
<b>Reference Well:</b>	Booth 21-23	<b>Survey Calculation Method:</b>	Minimum Curvature
<b>Well Error:</b>	0.0ft	<b>Output errors are at</b>	2.00 sigma
<b>Reference Wellbore</b>	Wellbore #1	<b>Database:</b>	Landmark
<b>Reference Design:</b>	Plan #1 (5-07-12)	<b>Offset TVD Reference:</b>	Offset Datum

Reference Depths are relative to WELL @ 4912.0ft (Original Well Elev) Coordinates are relative to: Booth 21-23  
 Offset Depths are relative to Offset Datum  
 Central Meridian is -105.500000 °  
 Coordinate System is US State Plane 1983, Colorado Northern Zone  
 Grid Convergence at Surface is: 0.56°



<b>Company:</b>	BAYSWATER EXPLORATION & PRODUCTION	<b>Local Co-ordinate Reference:</b>	Well Booth 21-23
<b>Project:</b>	SEC.23-T7N-R65W	<b>TVD Reference:</b>	WELL @ 4912.0ft (Original Well Elev)
<b>Reference Site:</b>	Booth 10 Pad Sec.23-T7N-R65W	<b>MD Reference:</b>	WELL @ 4912.0ft (Original Well Elev)
<b>Site Error:</b>	0.0ft	<b>North Reference:</b>	True
<b>Reference Well:</b>	Booth 21-23	<b>Survey Calculation Method:</b>	Minimum Curvature
<b>Well Error:</b>	0.0ft	<b>Output errors are at</b>	2.00 sigma
<b>Reference Wellbore</b>	Wellbore #1	<b>Database:</b>	Landmark
<b>Reference Design:</b>	Plan #1 (5-07-12)	<b>Offset TVD Reference:</b>	Offset Datum

Reference Depths are relative to WELL @ 4912.0ft (Original Well Elev) Coordinates are relative to: Booth 21-23  
Offset Depths are relative to Offset Datum  
Central Meridian is -105.500000 °  
Coordinate System is US State Plane 1983, Colorado Northern Zone  
Grid Convergence at Surface is: 0.56°

