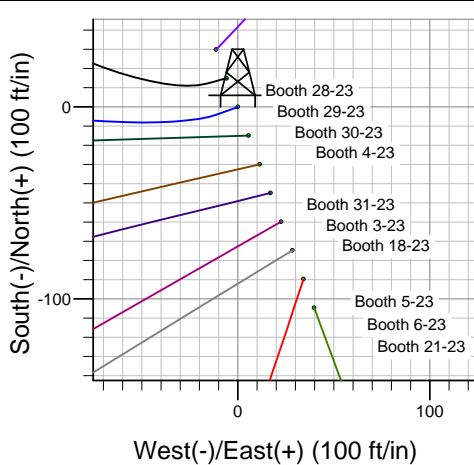
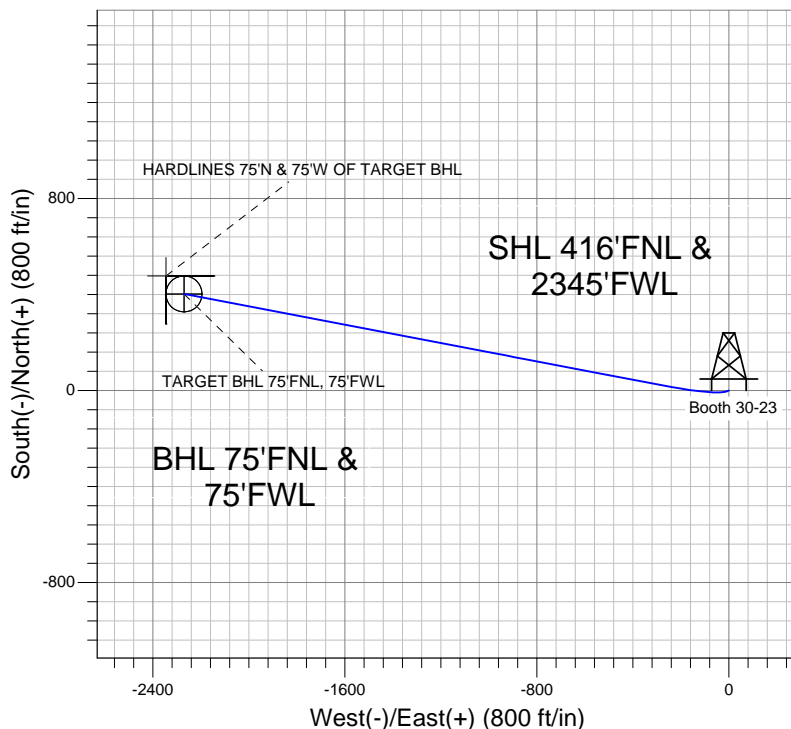
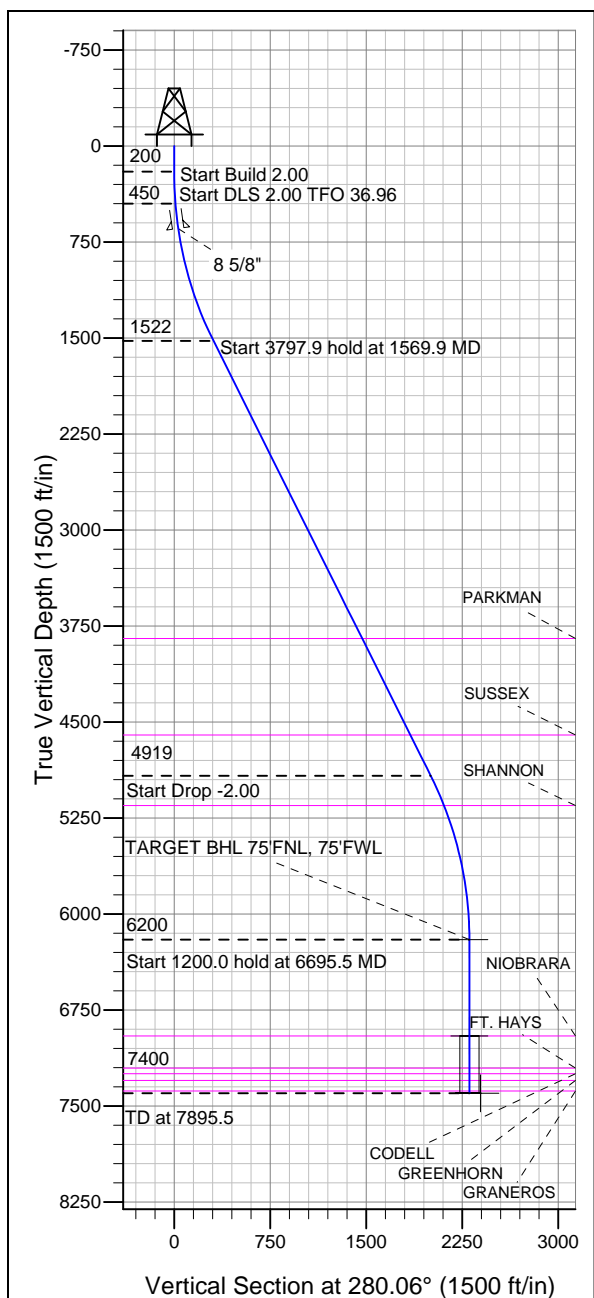


Well Name: Booth 30-23

Surface Location: Booth 10 Pad Sec.23-T7N-R65W
North American Datum 1983, US State Plane 1983 Colorado Northern Zone
Ground Elevation: 4897.0

+N/-S	+E/-W	Northing	Easting	Latitude	Longitude	Slot
0.0	0.0	1449921.61	3241351.88	40.565189	-104.631288	
		Original Well Elev	WELL @ 4913.0ft (Original Well Elev)			

BAYSWATER EXPLORATION & PRODUCTION



Booth 10 Pad Sec.23-T7N-R65W
Booth 30-23
Plan #1 (5-07-12)
14:31, May 10 2012



Azimuths to True North
Magnetic North: 8.69°
Magnetic Field
Strength: 53137.0snT
Dip Angle: 67.18°
Date: 5/7/2012
Model: IGRF2010

WELLBORE TARGET DETAILS (LAT/LONG)

Name	TVD	+N/-S	+E/-W	Latitude	Longitude	Shape
TARGET BHL 75'FNL, 75'FWL	6200.0	402.7	-2270.2	40.566294	-104.639459	Point
TARGET CIRCLE 75'FNL & 75'FWL	6952.0	402.7	-2270.2	40.566294	-104.639459	Circle (Radius: 75.0)
HARDLINES 75'N & 75'W OF TARGET BHL	7400.0	477.7	-2345.2	40.566500	-104.639729	Polygon

SECTION DETAILS

Sec	MD	Inc	Azi	TVD	+N/-S	+E/-W	DLeg	TFace	VSec	Target
1	0.0	0.00	0.00	0.0	0.0	0.0	0.00	0.00	0.0	
2	200.0	0.00	0.00	200.0	0.0	0.0	0.00	0.00	0.0	
3	450.0	5.00	250.00	449.7	-3.7	-10.2	2.00	250.00	9.4	
4	1569.9	26.55	280.83	1522.0	27.0	-305.7	2.00	36.96	305.8	
5	5367.8	26.55	280.83	4919.3	345.9	-1973.4	0.00	0.00	2003.4	
6	6695.5	0.00	0.00	6200.0	402.7	-2270.2	2.00	180.00	2305.6	TARGET BHL 75'FNL, 75'FWL
7	7895.5	0.00	0.00	7400.0	402.7	-2270.2	0.00	0.00	2305.6	



BAYSWATER EXPLORATION & PRODUCTION

SEC.23-T7N-R65W

Booth 10 Pad Sec.23-T7N-R65W

Booth 30-23

Wellbore #1

Plan: Plan #1 (5-07-12)

Standard Planning Report

10 May, 2012

Database:	Landmark	Local Co-ordinate Reference:	Well Booth 30-23
Company:	BAYSWATER EXPLORATION & PRODUCTION	TVD Reference:	WELL @ 4913.0ft (Original Well Elev)
Project:	SEC.23-T7N-R65W	MD Reference:	WELL @ 4913.0ft (Original Well Elev)
Site:	Booth 10 Pad Sec.23-T7N-R65W	North Reference:	True
Well:	Booth 30-23	Survey Calculation Method:	Minimum Curvature
Wellbore:	Wellbore #1		
Design:	Plan #1 (5-07-12)		

Project	SEC.23-T7N-R65W, Weld County, CO		
Map System:	US State Plane 1983	System Datum:	Mean Sea Level
Geo Datum:	North American Datum 1983		Using Well Reference Point
Map Zone:	Colorado Northern Zone		Using geodetic scale factor

Site	Booth 10 Pad Sec.23-T7N-R65W		
Site Position:		Northing:	1,449,951.39ft
From:	Lat/Long	Easting:	3,241,340.20ft
Position Uncertainty:	0.0 ft	Slot Radius:	"
		Latitude:	40.565271
		Longitude:	-104.631329
		Grid Convergence:	0.56 °

Well	Booth 30-23		
Well Position	+N/-S	-29.9 ft	Northing:
	+E/-W	11.4 ft	Easting:
Position Uncertainty		0.0 ft	Wellhead Elevation:
			ft
			Latitude:
			40.565189
			Longitude:
			-104.631288
			Ground Level:
			4,897.0 ft

Wellbore	Wellbore #1				
Magnetics	Model Name	Sample Date	Declination (°)	Dip Angle (°)	Field Strength (nT)
	IGRF2010	5/7/2012	8.69	67.18	53,137

Design	Plan #1 (5-07-12)			
Audit Notes:				
Version:	Phase:	PROTOTYPE	Tie On Depth:	0.0
Vertical Section:	Depth From (TVD) (ft)	+N/-S (ft)	+E/-W (ft)	Direction (°)
	0.0	0.0	0.0	280.06

Plan Sections										
Measured Depth (ft)	Inclination (°)	Azimuth (°)	Vertical Depth (ft)	+N/-S (ft)	+E/-W (ft)	Dogleg Rate (°/100ft)	Build Rate (°/100ft)	Turn Rate (°/100ft)	TFO (°)	Target
0.0	0.00	0.00	0.0	0.0	0.0	0.00	0.00	0.00	0.00	
200.0	0.00	0.00	200.0	0.0	0.0	0.00	0.00	0.00	0.00	
450.0	5.00	250.00	449.7	-3.7	-10.2	2.00	2.00	0.00	250.00	
1,569.9	26.55	280.83	1,522.0	27.0	-305.7	2.00	1.92	2.75	36.96	
5,367.8	26.55	280.83	4,919.3	345.9	-1,973.4	0.00	0.00	0.00	0.00	
6,695.5	0.00	0.00	6,200.0	402.7	-2,270.2	2.00	-2.00	0.00	180.00	TARGET BHL 75'FI
7,895.5	0.00	0.00	7,400.0	402.7	-2,270.2	0.00	0.00	0.00	0.00	

Database:	Landmark	Local Co-ordinate Reference:	Well Booth 30-23
Company:	BAYSWATER EXPLORATION & PRODUCTION	TVD Reference:	WELL @ 4913.0ft (Original Well Elev)
Project:	SEC.23-T7N-R65W	MD Reference:	WELL @ 4913.0ft (Original Well Elev)
Site:	Booth 10 Pad Sec.23-T7N-R65W	North Reference:	True
Well:	Booth 30-23	Survey Calculation Method:	Minimum Curvature
Wellbore:	Wellbore #1		
Design:	Plan #1 (5-07-12)		

Planned Survey									
Measured Depth (ft)	Inclination (°)	Azimuth (°)	Vertical Depth (ft)	+N/-S (ft)	+E/-W (ft)	Vertical Section (ft)	Dogleg Rate (°/100ft)	Build Rate (°/100ft)	Turn Rate (°/100ft)
0.0	0.00	0.00	0.0	0.0	0.0	0.0	0.00	0.00	0.00
40.0	0.00	0.00	40.0	0.0	0.0	0.0	0.00	0.00	0.00
80.0	0.00	0.00	80.0	0.0	0.0	0.0	0.00	0.00	0.00
120.0	0.00	0.00	120.0	0.0	0.0	0.0	0.00	0.00	0.00
160.0	0.00	0.00	160.0	0.0	0.0	0.0	0.00	0.00	0.00
200.0	0.00	0.00	200.0	0.0	0.0	0.0	0.00	0.00	0.00
240.0	0.80	250.00	240.0	-0.1	-0.3	0.2	2.00	2.00	0.00
280.0	1.60	250.00	280.0	-0.4	-1.0	1.0	2.00	2.00	0.00
320.0	2.40	250.00	320.0	-0.9	-2.4	2.2	2.00	2.00	0.00
360.0	3.20	250.00	359.9	-1.5	-4.2	3.9	2.00	2.00	0.00
400.0	4.00	250.00	399.8	-2.4	-6.6	6.0	2.00	2.00	0.00
440.0	4.80	250.00	439.7	-3.4	-9.4	8.7	2.00	2.00	0.00
450.0	5.00	250.00	449.7	-3.7	-10.2	9.4	2.00	2.00	0.00
480.0	5.49	253.77	479.6	-4.6	-12.9	11.9	2.00	1.64	12.57
520.0	6.18	257.85	519.3	-5.6	-16.8	15.6	2.00	1.71	10.19
560.0	6.89	261.10	559.1	-6.4	-21.3	19.8	2.00	1.77	8.13
600.0	7.61	263.74	598.8	-7.0	-26.3	24.6	2.00	1.82	6.60
640.0	8.35	265.92	638.4	-7.5	-31.8	30.0	2.00	1.85	5.45
646.7	8.48	266.24	645.0	-7.6	-32.8	30.9	2.00	1.87	4.89
8 5/8"									
680.0	9.10	267.74	677.9	-7.9	-37.9	35.9	2.00	1.88	4.49
720.0	9.86	269.29	717.4	-8.0	-44.4	42.4	2.00	1.90	3.87
760.0	10.63	270.61	756.7	-8.0	-51.6	49.4	2.00	1.91	3.32
800.0	11.40	271.77	796.0	-7.9	-59.2	56.9	2.00	1.92	2.88
840.0	12.17	272.77	835.2	-7.6	-67.4	65.0	2.00	1.93	2.52
880.0	12.95	273.66	874.2	-7.1	-76.0	73.6	2.00	1.94	2.22
920.0	13.73	274.45	913.1	-6.4	-85.2	82.8	2.00	1.95	1.97
960.0	14.51	275.15	951.9	-5.6	-95.0	92.5	2.00	1.95	1.76
1,000.0	15.29	275.79	990.6	-4.6	-105.2	102.8	2.00	1.96	1.59
1,040.0	16.07	276.36	1,029.1	-3.5	-116.0	113.6	2.00	1.96	1.44
1,080.0	16.86	276.88	1,067.4	-2.2	-127.2	124.9	2.00	1.97	1.30
1,120.0	17.65	277.36	1,105.6	-0.7	-139.0	136.7	2.00	1.97	1.19
1,160.0	18.44	277.80	1,143.7	0.9	-151.3	149.1	2.00	1.97	1.09
1,200.0	19.23	278.20	1,181.5	2.7	-164.1	162.0	2.00	1.97	1.01
1,240.0	20.02	278.57	1,219.2	4.7	-177.3	175.4	2.00	1.98	0.93
1,280.0	20.81	278.92	1,256.7	6.8	-191.1	189.4	2.00	1.98	0.86
1,320.0	21.60	279.24	1,294.0	9.1	-205.4	203.9	2.00	1.98	0.80
1,360.0	22.39	279.54	1,331.1	11.6	-220.2	218.8	2.00	1.98	0.75
1,400.0	23.18	279.82	1,367.9	14.2	-235.5	234.3	2.00	1.98	0.70
1,440.0	23.98	280.08	1,404.6	16.9	-251.2	250.3	2.00	1.98	0.66
1,480.0	24.77	280.32	1,441.0	19.8	-267.5	266.8	2.00	1.98	0.62
1,520.0	25.56	280.56	1,477.2	22.9	-284.2	283.8	2.00	1.98	0.58
1,560.0	26.36	280.77	1,513.2	26.2	-301.4	301.4	2.00	1.99	0.55
1,569.9	26.55	280.83	1,522.0	27.0	-305.7	305.8	2.00	1.99	0.53
1,600.0	26.55	280.83	1,549.0	29.5	-319.0	319.2	0.00	0.00	0.00
1,640.0	26.55	280.83	1,584.8	32.9	-336.5	337.1	0.00	0.00	0.00
1,680.0	26.55	280.83	1,620.6	36.2	-354.1	355.0	0.00	0.00	0.00
1,720.0	26.55	280.83	1,656.3	39.6	-371.7	372.9	0.00	0.00	0.00
1,760.0	26.55	280.83	1,692.1	43.0	-389.2	390.7	0.00	0.00	0.00
1,800.0	26.55	280.83	1,727.9	46.3	-406.8	408.6	0.00	0.00	0.00
1,840.0	26.55	280.83	1,763.7	49.7	-424.3	426.5	0.00	0.00	0.00
1,880.0	26.55	280.83	1,799.5	53.0	-441.9	444.4	0.00	0.00	0.00
1,920.0	26.55	280.83	1,835.2	56.4	-459.5	462.3	0.00	0.00	0.00

Database:	Landmark	Local Co-ordinate Reference:	Well Booth 30-23
Company:	BAYSWATER EXPLORATION & PRODUCTION	TVD Reference:	WELL @ 4913.0ft (Original Well Elev)
Project:	SEC.23-T7N-R65W	MD Reference:	WELL @ 4913.0ft (Original Well Elev)
Site:	Booth 10 Pad Sec.23-T7N-R65W	North Reference:	True
Well:	Booth 30-23	Survey Calculation Method:	Minimum Curvature
Wellbore:	Wellbore #1		
Design:	Plan #1 (5-07-12)		

Planned Survey									
Measured Depth (ft)	Inclination (°)	Azimuth (°)	Vertical Depth (ft)	+N/-S (ft)	+E/-W (ft)	Vertical Section (ft)	Dogleg Rate (°/100ft)	Build Rate (°/100ft)	Turn Rate (°/100ft)
1,960.0	26.55	280.83	1,871.0	59.8	-477.0	480.1	0.00	0.00	0.00
2,000.0	26.55	280.83	1,906.8	63.1	-494.6	498.0	0.00	0.00	0.00
2,040.0	26.55	280.83	1,942.6	66.5	-512.2	515.9	0.00	0.00	0.00
2,080.0	26.55	280.83	1,978.4	69.8	-529.7	533.8	0.00	0.00	0.00
2,120.0	26.55	280.83	2,014.1	73.2	-547.3	551.7	0.00	0.00	0.00
2,160.0	26.55	280.83	2,049.9	76.6	-564.9	569.5	0.00	0.00	0.00
2,200.0	26.55	280.83	2,085.7	79.9	-582.4	587.4	0.00	0.00	0.00
2,240.0	26.55	280.83	2,121.5	83.3	-600.0	605.3	0.00	0.00	0.00
2,280.0	26.55	280.83	2,157.3	86.6	-617.6	623.2	0.00	0.00	0.00
2,320.0	26.55	280.83	2,193.0	90.0	-635.1	641.1	0.00	0.00	0.00
2,360.0	26.55	280.83	2,228.8	93.3	-652.7	658.9	0.00	0.00	0.00
2,400.0	26.55	280.83	2,264.6	96.7	-670.2	676.8	0.00	0.00	0.00
2,440.0	26.55	280.83	2,300.4	100.1	-687.8	694.7	0.00	0.00	0.00
2,480.0	26.55	280.83	2,336.2	103.4	-705.4	712.6	0.00	0.00	0.00
2,520.0	26.55	280.83	2,371.9	106.8	-722.9	730.5	0.00	0.00	0.00
2,560.0	26.55	280.83	2,407.7	110.1	-740.5	748.4	0.00	0.00	0.00
2,600.0	26.55	280.83	2,443.5	113.5	-758.1	766.2	0.00	0.00	0.00
2,640.0	26.55	280.83	2,479.3	116.9	-775.6	784.1	0.00	0.00	0.00
2,680.0	26.55	280.83	2,515.1	120.2	-793.2	802.0	0.00	0.00	0.00
2,720.0	26.55	280.83	2,550.8	123.6	-810.8	819.9	0.00	0.00	0.00
2,760.0	26.55	280.83	2,586.6	126.9	-828.3	837.8	0.00	0.00	0.00
2,800.0	26.55	280.83	2,622.4	130.3	-845.9	855.6	0.00	0.00	0.00
2,840.0	26.55	280.83	2,658.2	133.7	-863.4	873.5	0.00	0.00	0.00
2,880.0	26.55	280.83	2,694.0	137.0	-881.0	891.4	0.00	0.00	0.00
2,920.0	26.55	280.83	2,729.7	140.4	-898.6	909.3	0.00	0.00	0.00
2,960.0	26.55	280.83	2,765.5	143.7	-916.1	927.2	0.00	0.00	0.00
3,000.0	26.55	280.83	2,801.3	147.1	-933.7	945.0	0.00	0.00	0.00
3,040.0	26.55	280.83	2,837.1	150.4	-951.3	962.9	0.00	0.00	0.00
3,080.0	26.55	280.83	2,872.9	153.8	-968.8	980.8	0.00	0.00	0.00
3,120.0	26.55	280.83	2,908.6	157.2	-986.4	998.7	0.00	0.00	0.00
3,160.0	26.55	280.83	2,944.4	160.5	-1,004.0	1,016.6	0.00	0.00	0.00
3,200.0	26.55	280.83	2,980.2	163.9	-1,021.5	1,034.4	0.00	0.00	0.00
3,240.0	26.55	280.83	3,016.0	167.2	-1,039.1	1,052.3	0.00	0.00	0.00
3,280.0	26.55	280.83	3,051.8	170.6	-1,056.6	1,070.2	0.00	0.00	0.00
3,320.0	26.55	280.83	3,087.6	174.0	-1,074.2	1,088.1	0.00	0.00	0.00
3,360.0	26.55	280.83	3,123.3	177.3	-1,091.8	1,106.0	0.00	0.00	0.00
3,400.0	26.55	280.83	3,159.1	180.7	-1,109.3	1,123.8	0.00	0.00	0.00
3,440.0	26.55	280.83	3,194.9	184.0	-1,126.9	1,141.7	0.00	0.00	0.00
3,480.0	26.55	280.83	3,230.7	187.4	-1,144.5	1,159.6	0.00	0.00	0.00
3,520.0	26.55	280.83	3,266.5	190.8	-1,162.0	1,177.5	0.00	0.00	0.00
3,560.0	26.55	280.83	3,302.2	194.1	-1,179.6	1,195.4	0.00	0.00	0.00
3,600.0	26.55	280.83	3,338.0	197.5	-1,197.2	1,213.2	0.00	0.00	0.00
3,640.0	26.55	280.83	3,373.8	200.8	-1,214.7	1,231.1	0.00	0.00	0.00
3,680.0	26.55	280.83	3,409.6	204.2	-1,232.3	1,249.0	0.00	0.00	0.00
3,720.0	26.55	280.83	3,445.4	207.6	-1,249.8	1,266.9	0.00	0.00	0.00
3,760.0	26.55	280.83	3,481.1	210.9	-1,267.4	1,284.8	0.00	0.00	0.00
3,800.0	26.55	280.83	3,516.9	214.3	-1,285.0	1,302.6	0.00	0.00	0.00
3,840.0	26.55	280.83	3,552.7	217.6	-1,302.5	1,320.5	0.00	0.00	0.00
3,880.0	26.55	280.83	3,588.5	221.0	-1,320.1	1,338.4	0.00	0.00	0.00
3,920.0	26.55	280.83	3,624.3	224.3	-1,337.7	1,356.3	0.00	0.00	0.00
3,960.0	26.55	280.83	3,660.0	227.7	-1,355.2	1,374.2	0.00	0.00	0.00
4,000.0	26.55	280.83	3,695.8	231.1	-1,372.8	1,392.0	0.00	0.00	0.00
4,040.0	26.55	280.83	3,731.6	234.4	-1,390.4	1,409.9	0.00	0.00	0.00

Database:	Landmark	Local Co-ordinate Reference:	Well Booth 30-23
Company:	BAYSWATER EXPLORATION & PRODUCTION	TVD Reference:	WELL @ 4913.0ft (Original Well Elev)
Project:	SEC.23-T7N-R65W	MD Reference:	WELL @ 4913.0ft (Original Well Elev)
Site:	Booth 10 Pad Sec.23-T7N-R65W	North Reference:	True
Well:	Booth 30-23	Survey Calculation Method:	Minimum Curvature
Wellbore:	Wellbore #1		
Design:	Plan #1 (5-07-12)		

Planned Survey									
Measured Depth (ft)	Inclination (°)	Azimuth (°)	Vertical Depth (ft)	+N/-S (ft)	+E/-W (ft)	Vertical Section (ft)	Dogleg Rate (°/100ft)	Build Rate (°/100ft)	Turn Rate (°/100ft)
4,080.0	26.55	280.83	3,767.4	237.8	-1,407.9	1,427.8	0.00	0.00	0.00
4,120.0	26.55	280.83	3,803.2	241.1	-1,425.5	1,445.7	0.00	0.00	0.00
4,160.0	26.55	280.83	3,838.9	244.5	-1,443.0	1,463.6	0.00	0.00	0.00
4,169.0	26.55	280.83	3,847.0	245.3	-1,447.0	1,467.6	0.00	0.00	0.00
PARKMAN									
4,200.0	26.55	280.83	3,874.7	247.9	-1,460.6	1,481.4	0.00	0.00	0.00
4,240.0	26.55	280.83	3,910.5	251.2	-1,478.2	1,499.3	0.00	0.00	0.00
4,280.0	26.55	280.83	3,946.3	254.6	-1,495.7	1,517.2	0.00	0.00	0.00
4,320.0	26.55	280.83	3,982.1	257.9	-1,513.3	1,535.1	0.00	0.00	0.00
4,360.0	26.55	280.83	4,017.8	261.3	-1,530.9	1,553.0	0.00	0.00	0.00
4,400.0	26.55	280.83	4,053.6	264.7	-1,548.4	1,570.8	0.00	0.00	0.00
4,440.0	26.55	280.83	4,089.4	268.0	-1,566.0	1,588.7	0.00	0.00	0.00
4,480.0	26.55	280.83	4,125.2	271.4	-1,583.6	1,606.6	0.00	0.00	0.00
4,520.0	26.55	280.83	4,161.0	274.7	-1,601.1	1,624.5	0.00	0.00	0.00
4,560.0	26.55	280.83	4,196.7	278.1	-1,618.7	1,642.4	0.00	0.00	0.00
4,600.0	26.55	280.83	4,232.5	281.5	-1,636.2	1,660.3	0.00	0.00	0.00
4,640.0	26.55	280.83	4,268.3	284.8	-1,653.8	1,678.1	0.00	0.00	0.00
4,680.0	26.55	280.83	4,304.1	288.2	-1,671.4	1,696.0	0.00	0.00	0.00
4,720.0	26.55	280.83	4,339.9	291.5	-1,688.9	1,713.9	0.00	0.00	0.00
4,760.0	26.55	280.83	4,375.6	294.9	-1,706.5	1,731.8	0.00	0.00	0.00
4,800.0	26.55	280.83	4,411.4	298.2	-1,724.1	1,749.7	0.00	0.00	0.00
4,840.0	26.55	280.83	4,447.2	301.6	-1,741.6	1,767.5	0.00	0.00	0.00
4,880.0	26.55	280.83	4,483.0	305.0	-1,759.2	1,785.4	0.00	0.00	0.00
4,920.0	26.55	280.83	4,518.8	308.3	-1,776.8	1,803.3	0.00	0.00	0.00
4,960.0	26.55	280.83	4,554.5	311.7	-1,794.3	1,821.2	0.00	0.00	0.00
5,000.0	26.55	280.83	4,590.3	315.0	-1,811.9	1,839.1	0.00	0.00	0.00
5,013.1	26.55	280.83	4,602.0	316.1	-1,817.6	1,844.9	0.00	0.00	0.00
SUSSEX									
5,040.0	26.55	280.83	4,626.1	318.4	-1,829.4	1,856.9	0.00	0.00	0.00
5,080.0	26.55	280.83	4,661.9	321.8	-1,847.0	1,874.8	0.00	0.00	0.00
5,120.0	26.55	280.83	4,697.7	325.1	-1,864.6	1,892.7	0.00	0.00	0.00
5,160.0	26.55	280.83	4,733.4	328.5	-1,882.1	1,910.6	0.00	0.00	0.00
5,200.0	26.55	280.83	4,769.2	331.8	-1,899.7	1,928.5	0.00	0.00	0.00
5,240.0	26.55	280.83	4,805.0	335.2	-1,917.3	1,946.3	0.00	0.00	0.00
5,280.0	26.55	280.83	4,840.8	338.6	-1,934.8	1,964.2	0.00	0.00	0.00
5,320.0	26.55	280.83	4,876.6	341.9	-1,952.4	1,982.1	0.00	0.00	0.00
5,360.0	26.55	280.83	4,912.3	345.3	-1,970.0	2,000.0	0.00	0.00	0.00
5,367.8	26.55	280.83	4,919.3	345.9	-1,973.4	2,003.4	0.00	0.00	0.00
5,400.0	25.91	280.83	4,948.2	348.6	-1,987.4	2,017.7	2.00	-2.00	0.00
5,440.0	25.11	280.83	4,984.3	351.8	-2,004.3	2,034.9	2.00	-2.00	0.00
5,480.0	24.31	280.83	5,020.6	355.0	-2,020.7	2,051.6	2.00	-2.00	0.00
5,520.0	23.51	280.83	5,057.2	358.0	-2,036.6	2,067.9	2.00	-2.00	0.00
5,560.0	22.71	280.83	5,094.0	361.0	-2,052.0	2,083.6	2.00	-2.00	0.00
5,600.0	21.91	280.83	5,131.0	363.8	-2,067.0	2,098.7	2.00	-2.00	0.00
5,622.6	21.46	280.83	5,152.0	365.4	-2,075.2	2,107.1	2.00	-2.00	0.00
SHANNON									
5,640.0	21.11	280.83	5,168.2	366.6	-2,081.4	2,113.4	2.00	-2.00	0.00
5,680.0	20.31	280.83	5,205.6	369.2	-2,095.3	2,127.5	2.00	-2.00	0.00
5,720.0	19.51	280.83	5,243.2	371.8	-2,108.6	2,141.2	2.00	-2.00	0.00
5,760.0	18.71	280.83	5,281.0	374.3	-2,121.5	2,154.3	2.00	-2.00	0.00
5,800.0	17.91	280.83	5,319.0	376.6	-2,133.8	2,166.8	2.00	-2.00	0.00
5,840.0	17.11	280.83	5,357.2	378.9	-2,145.7	2,178.9	2.00	-2.00	0.00
5,880.0	16.31	280.83	5,395.5	381.0	-2,157.0	2,190.4	2.00	-2.00	0.00

Database:	Landmark	Local Co-ordinate Reference:	Well Booth 30-23
Company:	BAYSWATER EXPLORATION & PRODUCTION	TVD Reference:	WELL @ 4913.0ft (Original Well Elev)
Project:	SEC.23-T7N-R65W	MD Reference:	WELL @ 4913.0ft (Original Well Elev)
Site:	Booth 10 Pad Sec.23-T7N-R65W	North Reference:	True
Well:	Booth 30-23	Survey Calculation Method:	Minimum Curvature
Wellbore:	Wellbore #1		
Design:	Plan #1 (5-07-12)		

Planned Survey									
Measured Depth (ft)	Inclination (°)	Azimuth (°)	Vertical Depth (ft)	+N/-S (ft)	+E/-W (ft)	Vertical Section (ft)	Dogleg Rate (°/100ft)	Build Rate (°/100ft)	Turn Rate (°/100ft)
5,920.0	15.51	280.83	5,433.9	383.1	-2,167.7	2,201.3	2.00	-2.00	0.00
5,960.0	14.71	280.83	5,472.6	385.1	-2,178.0	2,211.7	2.00	-2.00	0.00
6,000.0	13.91	280.83	5,511.3	386.9	-2,187.7	2,221.6	2.00	-2.00	0.00
6,040.0	13.11	280.83	5,550.2	388.7	-2,196.9	2,231.0	2.00	-2.00	0.00
6,080.0	12.31	280.83	5,589.2	390.3	-2,205.5	2,239.8	2.00	-2.00	0.00
6,120.0	11.51	280.83	5,628.4	391.9	-2,213.6	2,248.0	2.00	-2.00	0.00
6,160.0	10.71	280.83	5,667.6	393.3	-2,221.2	2,255.7	2.00	-2.00	0.00
6,200.0	9.91	280.83	5,707.0	394.7	-2,228.2	2,262.9	2.00	-2.00	0.00
6,240.0	9.11	280.83	5,746.4	395.9	-2,234.7	2,269.5	2.00	-2.00	0.00
6,280.0	8.31	280.83	5,786.0	397.0	-2,240.7	2,275.6	2.00	-2.00	0.00
6,320.0	7.51	280.83	5,825.6	398.1	-2,246.1	2,281.1	2.00	-2.00	0.00
6,360.0	6.71	280.83	5,865.3	399.0	-2,250.9	2,286.0	2.00	-2.00	0.00
6,400.0	5.91	280.83	5,905.0	399.8	-2,255.2	2,290.4	2.00	-2.00	0.00
6,440.0	5.11	280.83	5,944.8	400.6	-2,259.0	2,294.2	2.00	-2.00	0.00
6,480.0	4.31	280.83	5,984.7	401.2	-2,262.2	2,297.5	2.00	-2.00	0.00
6,520.0	3.51	280.83	6,024.6	401.7	-2,264.9	2,300.3	2.00	-2.00	0.00
6,560.0	2.71	280.83	6,064.6	402.1	-2,267.0	2,302.4	2.00	-2.00	0.00
6,600.0	1.91	280.83	6,104.5	402.4	-2,268.6	2,304.0	2.00	-2.00	0.00
6,640.0	1.11	280.83	6,144.5	402.6	-2,269.7	2,305.1	2.00	-2.00	0.00
6,680.0	0.31	280.83	6,184.5	402.7	-2,270.2	2,305.6	2.00	-2.00	0.00
6,695.5	0.00	0.00	6,200.0	402.7	-2,270.2	2,305.6	2.00	-2.00	0.00
TARGET BHL 75'FNL, 75'FWL									
6,720.0	0.00	0.00	6,224.5	402.7	-2,270.2	2,305.6	0.00	0.00	0.00
6,760.0	0.00	0.00	6,264.5	402.7	-2,270.2	2,305.6	0.00	0.00	0.00
6,800.0	0.00	0.00	6,304.5	402.7	-2,270.2	2,305.6	0.00	0.00	0.00
6,840.0	0.00	0.00	6,344.5	402.7	-2,270.2	2,305.6	0.00	0.00	0.00
6,880.0	0.00	0.00	6,384.5	402.7	-2,270.2	2,305.6	0.00	0.00	0.00
6,920.0	0.00	0.00	6,424.5	402.7	-2,270.2	2,305.6	0.00	0.00	0.00
6,960.0	0.00	0.00	6,464.5	402.7	-2,270.2	2,305.6	0.00	0.00	0.00
7,000.0	0.00	0.00	6,504.5	402.7	-2,270.2	2,305.6	0.00	0.00	0.00
7,040.0	0.00	0.00	6,544.5	402.7	-2,270.2	2,305.6	0.00	0.00	0.00
7,080.0	0.00	0.00	6,584.5	402.7	-2,270.2	2,305.6	0.00	0.00	0.00
7,120.0	0.00	0.00	6,624.5	402.7	-2,270.2	2,305.6	0.00	0.00	0.00
7,160.0	0.00	0.00	6,664.5	402.7	-2,270.2	2,305.6	0.00	0.00	0.00
7,200.0	0.00	0.00	6,704.5	402.7	-2,270.2	2,305.6	0.00	0.00	0.00
7,240.0	0.00	0.00	6,744.5	402.7	-2,270.2	2,305.6	0.00	0.00	0.00
7,280.0	0.00	0.00	6,784.5	402.7	-2,270.2	2,305.6	0.00	0.00	0.00
7,320.0	0.00	0.00	6,824.5	402.7	-2,270.2	2,305.6	0.00	0.00	0.00
7,360.0	0.00	0.00	6,864.5	402.7	-2,270.2	2,305.6	0.00	0.00	0.00
7,400.0	0.00	0.00	6,904.5	402.7	-2,270.2	2,305.6	0.00	0.00	0.00
7,440.0	0.00	0.00	6,944.5	402.7	-2,270.2	2,305.6	0.00	0.00	0.00
7,447.5	0.00	0.00	6,952.0	402.7	-2,270.2	2,305.6	0.00	0.00	0.00
NIOBRARA - TARGET CIRCLE 75'FNL & 75'FWL									
7,480.0	0.00	0.00	6,984.5	402.7	-2,270.2	2,305.6	0.00	0.00	0.00
7,520.0	0.00	0.00	7,024.5	402.7	-2,270.2	2,305.6	0.00	0.00	0.00
7,560.0	0.00	0.00	7,064.5	402.7	-2,270.2	2,305.6	0.00	0.00	0.00
7,600.0	0.00	0.00	7,104.5	402.7	-2,270.2	2,305.6	0.00	0.00	0.00
7,640.0	0.00	0.00	7,144.5	402.7	-2,270.2	2,305.6	0.00	0.00	0.00
7,680.0	0.00	0.00	7,184.5	402.7	-2,270.2	2,305.6	0.00	0.00	0.00
7,699.5	0.00	0.00	7,204.0	402.7	-2,270.2	2,305.6	0.00	0.00	0.00
FT. HAYS									
7,720.0	0.00	0.00	7,224.5	402.7	-2,270.2	2,305.6	0.00	0.00	0.00
7,743.5	0.00	0.00	7,248.0	402.7	-2,270.2	2,305.6	0.00	0.00	0.00

Database:	Landmark	Local Co-ordinate Reference:	Well Booth 30-23
Company:	BAYSWATER EXPLORATION & PRODUCTION	TVD Reference:	WELL @ 4913.0ft (Original Well Elev)
Project:	SEC.23-T7N-R65W	MD Reference:	WELL @ 4913.0ft (Original Well Elev)
Site:	Booth 10 Pad Sec.23-T7N-R65W	North Reference:	True
Well:	Booth 30-23	Survey Calculation Method:	Minimum Curvature
Wellbore:	Wellbore #1		
Design:	Plan #1 (5-07-12)		

Planned Survey

Measured Depth (ft)	Inclination (°)	Azimuth (°)	Vertical Depth (ft)	+N/-S (ft)	+E/-W (ft)	Vertical Section (ft)	Dogleg Rate (°/100ft)	Build Rate (°/100ft)	Turn Rate (°/100ft)
CODELL									
7,760.0	0.00	0.00	7,264.5	402.7	-2,270.2	2,305.6	0.00	0.00	0.00
7,795.5	0.00	0.00	7,300.0	402.7	-2,270.2	2,305.6	0.00	0.00	0.00
GREENHORN									
7,800.0	0.00	0.00	7,304.5	402.7	-2,270.2	2,305.6	0.00	0.00	0.00
7,840.0	0.00	0.00	7,344.5	402.7	-2,270.2	2,305.6	0.00	0.00	0.00
7,877.5	0.00	0.00	7,382.0	402.7	-2,270.2	2,305.6	0.00	0.00	0.00
GRANEROS									
7,880.0	0.00	0.00	7,384.5	402.7	-2,270.2	2,305.6	0.00	0.00	0.00
7,895.5	0.00	0.00	7,400.0	402.7	-2,270.2	2,305.6	0.00	0.00	0.00
HARDLINES 75°N & 75°W OF TARGET BHL									

Targets

Target Name - hit/miss target - Shape	Dip Angle (°)	Dip Dir. (°)	TVD (ft)	+N/-S (ft)	+E/-W (ft)	Northing (ft)	Easting (ft)	Latitude	Longitude
TARGET CIRCLE 75' - plan hits target center - Circle (radius 75.0)	0.00	0.00	6,952.0	402.7	-2,270.2	1,450,302.04	3,239,077.92	40.566294	-104.639459
TARGET BHL 75°FNL - plan hits target center - Point	0.00	0.00	6,200.0	402.7	-2,270.2	1,450,302.04	3,239,077.92	40.566294	-104.639459
HARDLINES 75°N & 7 - plan misses target center by 106.1ft at 7895.5ft MD (7400.0 TVD, 402.7 N, -2270.2 E) - Polygon	0.00	0.00	7,400.0	477.7	-2,345.2	1,450,376.30	3,239,002.18	40.566500	-104.639729
Point 1			7,400.0	0.0	0.0	1,450,376.30	3,239,002.18		
Point 2			7,400.0	-200.0	0.0	1,450,176.32	3,239,004.14		
Point 3			7,400.0	0.0	0.0	1,450,376.30	3,239,002.18		
Point 4			7,400.0	0.0	200.0	1,450,378.26	3,239,202.17		

Casing Points

Measured Depth (ft)	Vertical Depth (ft)	Name	Casing Diameter (")	Hole Diameter (")
646.7	645.0	8 5/8"	8-5/8	12-1/4

Database:	Landmark	Local Co-ordinate Reference:	Well Booth 30-23
Company:	BAYSWATER EXPLORATION & PRODUCTION	TVD Reference:	WELL @ 4913.0ft (Original Well Elev)
Project:	SEC.23-T7N-R65W	MD Reference:	WELL @ 4913.0ft (Original Well Elev)
Site:	Booth 10 Pad Sec.23-T7N-R65W	North Reference:	True
Well:	Booth 30-23	Survey Calculation Method:	Minimum Curvature
Wellbore:	Wellbore #1		
Design:	Plan #1 (5-07-12)		

Formations						
Measured Depth (ft)	Vertical Depth (ft)	Name	Lithology	Dip (°)	Dip Direction (°)	
4,169.0	3,847.0	PARKMAN		0.00		
5,013.1	4,602.0	SUSSEX		0.00		
5,622.6	5,152.0	SHANNON		0.00		
7,447.5	6,952.0	NIOBRARA		0.00		
7,699.5	7,204.0	FT. HAYS		0.00		
7,743.5	7,248.0	CODELL		0.00		
7,795.5	7,300.0	GREENHORN		0.00		
7,877.5	7,382.0	GRANEROS		0.00		



BAYSWATER EXPLORATION & PRODUCTION

SEC.23-T7N-R65W

Booth 10 Pad Sec.23-T7N-R65W

Booth 30-23

Wellbore #1

Plan #1 (5-07-12)

Anticollision Report

10 May, 2012

Company:	BAYSWATER EXPLORATION & PRODUCTION	Local Co-ordinate Reference:	Well Booth 30-23
Project:	SEC.23-T7N-R65W	TVD Reference:	WELL @ 4913.0ft (Original Well Elev)
Reference Site:	Booth 10 Pad Sec.23-T7N-R65W	MD Reference:	WELL @ 4913.0ft (Original Well Elev)
Site Error:	0.0ft	North Reference:	True
Reference Well:	Booth 30-23	Survey Calculation Method:	Minimum Curvature
Well Error:	0.0ft	Output errors are at	2.00 sigma
Reference Wellbore	Wellbore #1	Database:	Landmark
Reference Design:	Plan #1 (5-07-12)	Offset TVD Reference:	Offset Datum

Reference	Plan #1 (5-07-12)		
Filter type:	NO GLOBAL FILTER: Using user defined selection & filtering criteria		
Interpolation Method:	MD Interval 100.0ft	Error Model:	ISCWSA
Depth Range:	Unlimited	Scan Method:	Closest Approach 3D
Results Limited by:	Maximum center-center distance of 10,000.0ft	Error Surface:	Elliptical Conic
Warning Levels Evaluated at:	2.00 Sigma		

Survey Tool Program	Date 5/7/2012			
From (ft)	To (ft)	Survey (Wellbore)	Tool Name	Description
0.0	7,895.5	Plan #1 (5-07-12) (Wellbore #1)	MWD	MWD - Standard

Summary						
Site Name	Reference Measured Depth (ft)	Offset Measured Depth (ft)	Distance Between Centres (ft)	Separation Factor	Warning	
Offset Well - Wellbore - Design						
Booth 10 Pad Sec.23-T7N-R65W						
Booth 29-23 - Wellbore #1 - Plan #1 (5-07-12)	200.0	200.0	16.0	15.4	23.782	CC
Booth 29-23 - Wellbore #1 - Plan #1 (5-07-12)	300.0	299.9	16.2	15.1	14.770	ES
Booth 29-23 - Wellbore #1 - Plan #1 (5-07-12)	1,100.0	1,096.2	42.7	36.1	6.491	SF
Booth 4-23 - Wellbore #1 - Plan #1 (5-07-12)	200.0	199.0	15.9	15.3	23.714	CC
Booth 4-23 - Wellbore #1 - Plan #1 (5-07-12)	300.0	299.0	16.0	14.9	14.492	ES
Booth 4-23 - Wellbore #1 - Plan #1 (5-07-12)	1,500.0	1,510.8	86.2	77.9	10.381	SF

Offset Design													Offset Site Error:	0.0ft
Booth 10 Pad Sec.23-T7N-R65W - Booth 29-23 - Wellbore #1 - Plan #1 (5-07-12)													Offset Well Error:	0.0ft
Survey Program: 0-MWD														
Reference	Offset	Semi Major Axis			Distance									
Measured Depth (ft)	Vertical Depth (ft)	Measured Depth (ft)	Vertical Depth (ft)	Reference (ft)	Offset (ft)	Highside Toolface (°)	Offset Wellbore Centre +N/-S (ft)	+E/-W (ft)	Between Centres (ft)	Between Ellipses (ft)	Minimum Separation (ft)	Separation Factor	Warning	
0.0	0.0	0.0	0.0	0.0	0.0	-21.34	14.9	-5.8	16.0	16.0	0.00	N/A		
100.0	100.0	100.0	100.0	0.1	0.1	-21.34	14.9	-5.8	16.0	15.8	0.22	71.347		
200.0	200.0	200.0	200.0	0.3	0.3	-21.34	14.9	-5.8	16.0	15.4	0.67	23.782	CC	
300.0	300.0	299.9	299.9	0.5	0.5	88.70	14.5	-7.5	16.2	15.1	1.10	14.770	ES	
400.0	399.8	399.9	399.7	0.8	0.8	88.81	13.1	-12.6	16.6	15.1	1.53	10.847		
500.0	499.5	499.6	499.0	1.0	1.0	83.49	11.3	-20.9	17.5	15.4	2.03	8.586		
600.0	598.8	599.0	597.9	1.3	1.3	78.96	11.2	-31.9	19.1	16.5	2.60	7.368		
700.0	697.7	698.4	696.3	1.6	1.6	79.38	13.4	-45.5	21.9	18.7	3.23	6.770		
800.0	796.0	797.7	794.1	2.0	2.0	82.00	17.8	-61.7	25.9	21.9	3.95	6.545		
900.0	893.7	896.9	891.3	2.4	2.4	85.27	24.4	-80.5	31.2	26.4	4.77	6.541		
1,000.0	990.6	996.6	988.8	2.9	2.8	91.08	31.8	-100.3	36.8	31.1	5.67	6.491		
1,100.0	1,086.6	1,096.2	1,086.1	3.5	3.2	99.85	39.2	-120.1	42.7	36.1	6.57	6.491	SF	
1,200.0	1,181.5	1,195.5	1,183.1	4.1	3.7	110.14	46.6	-139.9	50.1	42.7	7.40	6.775		
1,300.0	1,275.4	1,294.4	1,279.7	4.8	4.1	120.50	54.0	-159.6	60.3	52.2	8.07	7.468		
1,400.0	1,367.9	1,392.7	1,375.8	5.5	4.5	129.79	61.3	-179.1	73.9	65.3	8.60	8.592		
1,500.0	1,459.2	1,490.4	1,471.3	6.4	5.0	137.55	68.6	-198.6	91.3	82.3	9.04	10.102		
1,600.0	1,549.0	1,587.4	1,566.0	7.3	5.4	143.95	75.9	-217.9	112.5	103.1	9.45	11.906		
1,700.0	1,638.4	1,684.2	1,660.6	8.2	5.9	148.92	83.1	-237.1	135.4	125.5	9.90	13.676		
1,800.0	1,727.9	1,780.9	1,755.2	9.2	6.3	152.44	90.3	-256.4	159.0	148.6	10.41	15.277		
1,900.0	1,817.3	1,877.7	1,849.7	10.1	6.8	155.05	97.5	-275.7	183.1	172.1	10.96	16.708		
2,000.0	1,906.8	1,974.5	1,944.3	11.1	7.2	157.05	104.8	-294.9	207.4	195.9	11.53	17.984		

CC - Min centre to center distance or convergent point, SF - min separation factor, ES - min ellipse separation

Company:	BAYSWATER EXPLORATION & PRODUCTION	Local Co-ordinate Reference:	Well Booth 30-23
Project:	SEC.23-T7N-R65W	TVD Reference:	WELL @ 4913.0ft (Original Well Elev)
Reference Site:	Booth 10 Pad Sec.23-T7N-R65W	MD Reference:	WELL @ 4913.0ft (Original Well Elev)
Site Error:	0.0ft	North Reference:	True
Reference Well:	Booth 30-23	Survey Calculation Method:	Minimum Curvature
Well Error:	0.0ft	Output errors are at	2.00 sigma
Reference Wellbore	Wellbore #1	Database:	Landmark
Reference Design:	Plan #1 (5-07-12)	Offset TVD Reference:	Offset Datum

Offset Design Booth 10 Pad Sec.23-T7N-R65W - Booth 29-23 - Wellbore #1 - Plan #1 (5-07-12)													Offset Site Error:	0.0 ft
Survey Program: 0-MWD													Offset Well Error:	0.0 ft
Measured Depth (ft)	Vertical Depth (ft)	Measured Depth (ft)	Vertical Depth (ft)	Reference	Offset	Semi Major Axis	Highside Toolface (°)	Offset Wellbore Centre +N/-S (ft)	Offset Wellbore Centre +E/-W (ft)	Between Centres (ft)	Between Ellipses (ft)	Minimum Separation (ft)	Separation Factor	Warning
2,100.0	1,996.3	2,071.2	2,038.9	12.1	7.7	158.64		112.0	-314.2	231.9	219.8	12.13	19.124	
2,200.0	2,085.7	2,168.0	2,133.4	13.0	8.1	159.92		119.2	-333.4	256.5	243.8	12.74	20.144	
2,300.0	2,175.2	2,264.8	2,228.0	14.0	8.6	160.98		126.4	-352.7	281.3	267.9	13.36	21.061	
2,400.0	2,264.6	2,361.6	2,322.5	15.0	9.0	161.86		133.6	-372.0	306.1	292.1	13.98	21.888	
2,500.0	2,354.1	2,458.3	2,417.1	16.0	9.5	162.61		140.9	-391.2	331.0	316.3	14.62	22.637	
2,600.0	2,443.5	2,555.1	2,511.7	16.9	9.9	163.26		148.1	-410.5	355.9	340.6	15.26	23.318	
2,700.0	2,533.0	2,651.9	2,606.2	17.9	10.4	163.83		155.3	-429.7	380.8	364.9	15.91	23.940	
2,800.0	2,622.4	2,748.7	2,700.8	18.9	10.8	164.32		162.5	-449.0	405.8	389.3	16.56	24.509	
2,900.0	2,711.9	2,845.4	2,795.3	19.9	11.3	164.76		169.7	-468.3	430.8	413.6	17.21	25.033	
3,000.0	2,801.3	2,942.2	2,889.9	20.9	11.7	165.15		177.0	-487.5	455.9	438.0	17.87	25.515	
3,100.0	2,890.8	3,039.0	2,984.5	21.8	12.2	165.49		184.2	-506.8	480.9	462.4	18.52	25.961	
3,200.0	2,980.2	3,135.7	3,079.0	22.8	12.6	165.81		191.4	-526.0	506.0	486.8	19.18	26.374	
3,300.0	3,069.7	3,232.5	3,173.6	23.8	13.1	166.09		198.6	-545.3	531.1	511.2	19.85	26.759	
3,400.0	3,159.1	3,329.3	3,268.1	24.8	13.5	166.35		205.8	-564.6	556.1	535.6	20.51	27.117	
3,500.0	3,248.6	3,426.1	3,362.7	25.8	14.0	166.59		213.1	-583.8	581.2	560.1	21.17	27.451	
3,600.0	3,338.0	3,522.8	3,457.3	26.8	14.5	166.80		220.3	-603.1	606.3	584.5	21.84	27.764	
3,700.0	3,427.5	3,619.6	3,551.8	27.7	14.9	167.00		227.5	-622.3	631.5	609.0	22.51	28.058	
3,800.0	3,516.9	3,716.4	3,646.4	28.7	15.4	167.19		234.7	-641.6	656.6	633.4	23.17	28.333	
3,900.0	3,606.4	3,813.2	3,741.0	29.7	15.8	167.36		241.9	-660.9	681.7	657.9	23.84	28.593	
4,000.0	3,695.8	3,909.9	3,835.5	30.7	16.3	167.52		249.2	-680.1	706.8	682.3	24.51	28.838	
4,100.0	3,785.3	4,006.7	3,930.1	31.7	16.7	167.66		256.4	-699.4	732.0	706.8	25.18	29.069	
4,200.0	3,874.7	4,103.5	4,024.6	32.7	17.2	167.80		263.6	-718.6	757.1	731.3	25.85	29.287	
4,300.0	3,964.2	4,200.2	4,119.2	33.7	17.6	167.93		270.8	-737.9	782.3	755.7	26.52	29.494	
4,400.0	4,053.6	4,297.0	4,213.8	34.6	18.1	168.05		278.0	-757.2	807.4	780.2	27.19	29.690	
4,500.0	4,143.1	4,393.8	4,308.3	35.6	18.5	168.17		285.3	-776.4	832.6	804.7	27.87	29.877	
4,600.0	4,232.5	4,490.6	4,402.9	36.6	19.0	168.27		292.5	-795.7	857.7	829.2	28.54	30.054	
4,700.0	4,322.0	4,587.3	4,497.4	37.6	19.4	168.37		299.7	-814.9	882.9	853.7	29.21	30.223	
4,800.0	4,411.4	4,684.1	4,592.0	38.6	19.9	168.47		306.9	-834.2	908.0	878.2	29.89	30.384	
4,900.0	4,500.9	4,780.9	4,686.6	39.6	20.3	168.56		314.1	-853.5	933.2	902.6	30.56	30.537	
5,000.0	4,590.3	4,877.7	4,781.1	40.5	20.8	168.65		321.4	-872.7	958.4	927.1	31.23	30.684	
5,100.0	4,679.8	4,974.4	4,875.7	41.5	21.2	168.73		328.6	-892.0	983.5	951.6	31.91	30.824	
5,200.0	4,769.2	5,071.2	4,970.3	42.5	21.7	168.80		335.8	-911.2	1,008.7	976.1	32.58	30.958	
5,300.0	4,858.7	5,168.0	5,064.8	43.5	22.2	168.88		343.0	-930.5	1,033.9	1,000.6	33.26	31.086	
5,400.0	4,948.2	5,264.8	5,141.9	44.5	22.5	168.97		348.7	-945.8	1,059.5	1,025.6	33.88	31.270	
5,500.0	5,038.9	5,318.4	5,212.3	45.2	22.7	169.14		353.3	-958.0	1,084.7	1,050.2	34.47	31.469	
5,600.0	5,131.0	5,400.0	5,292.9	45.9	22.9	169.32		357.8	-969.9	1,108.9	1,073.9	35.01	31.672	
5,700.0	5,224.4	5,460.8	5,353.2	46.5	23.1	169.47		360.6	-977.4	1,132.0	1,096.5	35.46	31.926	
5,800.0	5,319.0	5,531.7	5,423.7	47.1	23.2	169.63		363.3	-984.7	1,154.0	1,118.2	35.86	32.185	
5,900.0	5,414.7	5,600.0	5,491.7	47.6	23.4	169.79		365.3	-990.1	1,175.0	1,138.8	36.19	32.466	
6,000.0	5,511.3	5,672.9	5,564.5	48.1	23.5	169.95		366.9	-994.2	1,194.9	1,158.4	36.47	32.767	
6,100.0	5,608.8	5,743.3	5,634.8	48.4	23.6	170.11		367.7	-996.5	1,213.7	1,177.0	36.67	33.093	
6,200.0	5,707.0	5,815.4	5,707.0	48.8	23.7	170.27		368.0	-997.2	1,231.3	1,194.5	36.83	33.436	
6,300.0	5,805.8	5,914.2	5,805.8	49.0	23.8	170.44		368.0	-997.2	1,246.6	1,209.7	36.96	33.726	
6,400.0	5,905.0	6,013.5	5,905.0	49.3	23.9	170.57		368.0	-997.2	1,258.5	1,221.4	37.07	33.953	
6,500.0	6,004.7	6,113.1	6,004.7	49.4	24.0	170.66		368.0	-997.2	1,266.9	1,229.8	37.13	34.123	
6,600.0	6,104.5	6,213.0	6,104.5	49.5	24.1	170.72		368.0	-997.2	1,271.9	1,234.8	37.15	34.237	
6,700.0	6,204.5	6,313.0	6,204.5	49.6	24.2	170.76		368.0	-997.2	1,273.5	1,236.4	37.15	34.278	
6,800.0	6,304.5	6,413.0	6,304.5	49.7	24.4	170.76		368.0	-997.2	1,273.5	1,236.1	37.45	34.008	
6,900.0	6,404.5	6,513.0	6,404.5	49.7	24.5	170.76		368.0	-997.2	1,273.5	1,235.8	37.75	33.739	
7,000.0	6,504.5	6,613.0	6,504.5	49.8	24.6	170.76		368.0	-997.2	1,273.5	1,235.5	38.05	33.472	
7,100.0	6,604.5	6,713.0	6,604.5	49.9	24.7	170.76		368.0	-997.2	1,273.5	1,235.2	38.35	33.207	

CC - Min centre to center distance or convergent point, SF - min separation factor, ES - min ellipse separation

Company:	BAYSWATER EXPLORATION & PRODUCTION	Local Co-ordinate Reference:	Well Booth 30-23
Project:	SEC.23-T7N-R65W	TVD Reference:	WELL @ 4913.0ft (Original Well Elev)
Reference Site:	Booth 10 Pad Sec.23-T7N-R65W	MD Reference:	WELL @ 4913.0ft (Original Well Elev)
Site Error:	0.0ft	North Reference:	True
Reference Well:	Booth 30-23	Survey Calculation Method:	Minimum Curvature
Well Error:	0.0ft	Output errors are at	2.00 sigma
Reference Wellbore	Wellbore #1	Database:	Landmark
Reference Design:	Plan #1 (5-07-12)	Offset TVD Reference:	Offset Datum

Offset Design Booth 10 Pad Sec.23-T7N-R65W - Booth 29-23 - Wellbore #1 - Plan #1 (5-07-12)												Offset Site Error:	0.0 ft
Survey Program: 0-MWD												Offset Well Error:	0.0 ft
Reference	Offset	Semi Major Axis		Distance									
Measured Depth (ft)	Vertical Depth (ft)	Measured Depth (ft)	Vertical Depth (ft)	Reference (ft)	Offset (ft)	Highside Toolface (°)	Offset Wellbore Centre +N/-S (ft)	Offset Wellbore Centre +E/-W (ft)	Between Centres (ft)	Between Ellipses (ft)	Minimum Separation (ft)	Separation Factor	Warning
7,200.0	6,704.5	6,813.0	6,704.5	49.9	24.9	91.56	368.0	-997.2	1,273.5	1,234.9	38.66	32.944	
7,300.0	6,804.5	6,913.0	6,804.5	50.0	25.0	91.56	368.0	-997.2	1,273.5	1,234.5	38.97	32.682	
7,400.0	6,904.5	7,013.0	6,904.5	50.1	25.1	91.56	368.0	-997.2	1,273.5	1,234.2	39.28	32.423	
7,500.0	7,004.5	7,113.0	7,004.5	50.1	25.3	91.56	368.0	-997.2	1,273.5	1,233.9	39.59	32.165	
7,600.0	7,104.5	7,213.0	7,104.5	50.2	25.4	91.56	368.0	-997.2	1,273.5	1,233.6	39.91	31.910	
7,700.0	7,204.5	7,313.0	7,204.5	50.3	25.5	91.56	368.0	-997.2	1,273.5	1,233.3	40.23	31.657	
7,800.0	7,304.5	7,413.0	7,304.5	50.3	25.7	91.56	368.0	-997.2	1,273.5	1,233.0	40.55	31.406	
7,859.9	7,364.4	7,472.9	7,364.4	50.4	25.8	91.56	368.0	-997.2	1,273.5	1,232.8	40.74	31.256	
7,895.5	7,400.0	7,498.5	7,390.0	50.4	25.8	91.56	368.0	-997.2	1,273.6	1,232.7	40.84	31.183	

Company:	BAYSWATER EXPLORATION & PRODUCTION	Local Co-ordinate Reference:	Well Booth 30-23
Project:	SEC.23-T7N-R65W	TVD Reference:	WELL @ 4913.0ft (Original Well Elev)
Reference Site:	Booth 10 Pad Sec.23-T7N-R65W	MD Reference:	WELL @ 4913.0ft (Original Well Elev)
Site Error:	0.0ft	North Reference:	True
Reference Well:	Booth 30-23	Survey Calculation Method:	Minimum Curvature
Well Error:	0.0ft	Output errors are at	2.00 sigma
Reference Wellbore	Wellbore #1	Database:	Landmark
Reference Design:	Plan #1 (5-07-12)	Offset TVD Reference:	Offset Datum

Offset Design Booth 10 Pad Sec.23-T7N-R65W - Booth 4-23 - Wellbore #1 - Plan #1 (5-07-12)													Offset Site Error:	0.0 ft
Survey Program: 0-MWD													Offset Well Error:	0.0 ft
Measured Depth (ft)	Vertical Depth (ft)	Measured Depth (ft)	Vertical Depth (ft)	Reference (ft)	Offset (ft)	Semi Major Axis (ft)	Highside Toolface (°)	Offset Wellbore Centre +N/-S (ft)	+E/-W (ft)	Between Centres (ft)	Between Ellipses (ft)	Minimum Separation (ft)	Separation Factor	Warning
0.0	0.0	0.0	0.0	0.0	0.0	159.59	159.59	-14.9	5.6	16.0	16.0	0.00	N/A	
100.0	100.0	99.0	99.0	0.1	0.1	159.59	159.59	-14.9	5.6	15.9	15.7	0.22	71.262	
200.0	200.0	199.0	199.0	0.3	0.3	159.59	159.59	-14.9	5.6	15.9	15.3	0.67	23.714 CC	
223.2	223.2	222.2	222.2	0.4	0.4	-90.74	-90.74	-14.9	5.6	15.9	15.2	0.77	20.618	
300.0	300.0	299.0	299.0	0.5	0.6	-96.65	-96.65	-14.9	5.6	16.0	14.9	1.11	14.492 ES	
400.0	399.8	398.8	398.8	0.8	0.8	-113.94	-113.94	-14.9	5.6	17.4	15.9	1.55	11.244	
500.0	499.5	499.1	499.1	1.0	1.0	-137.87	-137.87	-15.0	3.8	21.1	19.1	2.00	10.517	
600.0	598.8	599.6	599.5	1.3	1.2	-155.70	-155.70	-15.2	-1.4	26.2	23.8	2.45	10.698	
700.0	697.7	700.4	699.9	1.6	1.5	-165.04	-165.04	-15.4	-10.2	32.0	29.1	2.90	11.008	
800.0	796.0	801.4	800.1	2.0	1.7	-169.63	-169.63	-15.8	-22.5	37.9	34.5	3.37	11.241	
900.0	893.7	902.7	900.1	2.4	2.0	-171.39	-171.39	-16.3	-38.4	43.9	40.0	3.86	11.364	
1,000.0	990.6	1,004.1	999.6	2.9	2.4	-171.35	-171.35	-17.0	-57.9	49.9	45.6	4.39	11.385	
1,100.0	1,086.6	1,105.7	1,098.5	3.5	2.9	-170.10	-170.10	-17.7	-80.9	56.2	51.2	4.97	11.311	
1,200.0	1,181.5	1,207.4	1,196.7	4.1	3.4	-168.02	-168.02	-18.5	-107.4	62.6	57.0	5.62	11.143	
1,300.0	1,275.4	1,309.2	1,294.0	4.8	3.9	-165.39	-165.39	-19.5	-137.4	69.5	63.1	6.39	10.884	
1,400.0	1,367.9	1,411.2	1,390.3	5.5	4.6	-162.39	-162.39	-20.5	-171.0	76.9	69.6	7.29	10.545	
1,500.0	1,459.2	1,510.8	1,483.7	6.4	5.3	-159.80	-159.80	-21.6	-205.6	86.2	77.9	8.30	10.381 SF	
1,600.0	1,549.0	1,609.9	1,576.6	7.3	6.0	-158.12	-158.12	-22.7	-240.1	98.9	89.5	9.36	10.565	
1,700.0	1,638.4	1,709.0	1,669.5	8.2	6.7	-156.71	-156.71	-23.8	-274.5	112.5	102.0	10.47	10.741	
1,800.0	1,727.9	1,808.0	1,762.3	9.2	7.4	-155.61	-155.61	-24.9	-308.9	126.1	114.5	11.60	10.868	
1,900.0	1,817.3	1,907.0	1,855.2	10.1	8.1	-154.72	-154.72	-26.0	-343.4	139.8	127.1	12.75	10.963	
2,000.0	1,906.8	2,006.1	1,948.1	11.1	8.8	-153.99	-153.99	-27.1	-377.8	153.5	139.6	13.91	11.035	
2,100.0	1,996.3	2,105.1	2,040.9	12.1	9.6	-153.38	-153.38	-28.2	-412.2	167.2	152.2	15.08	11.090	
2,200.0	2,085.7	2,204.2	2,133.8	13.0	10.3	-152.86	-152.86	-29.3	-446.7	181.0	164.7	16.26	11.134	
2,300.0	2,175.2	2,303.2	2,226.6	14.0	11.0	-152.42	-152.42	-30.4	-481.1	194.8	177.3	17.44	11.169	
2,400.0	2,264.6	2,402.2	2,319.5	15.0	11.8	-152.03	-152.03	-31.5	-515.6	208.5	189.9	18.62	11.197	
2,500.0	2,354.1	2,501.3	2,412.3	16.0	12.5	-151.69	-151.69	-32.6	-550.0	222.3	202.5	19.81	11.221	
2,600.0	2,443.5	2,600.3	2,505.2	16.9	13.2	-151.40	-151.40	-33.7	-584.4	236.1	215.1	21.00	11.240	
2,700.0	2,533.0	2,699.3	2,598.0	17.9	14.0	-151.13	-151.13	-34.8	-618.9	249.9	227.7	22.20	11.256	
2,800.0	2,622.4	2,798.4	2,690.9	18.9	14.7	-150.89	-150.89	-35.9	-653.3	263.7	240.3	23.40	11.270	
2,900.0	2,711.9	2,897.4	2,783.7	19.9	15.4	-150.68	-150.68	-37.0	-687.7	277.5	252.9	24.59	11.281	
3,000.0	2,801.3	2,996.5	2,876.6	20.9	16.2	-150.49	-150.49	-38.1	-722.2	291.3	265.5	25.80	11.291	
3,100.0	2,890.8	3,095.5	2,969.4	21.8	16.9	-150.31	-150.31	-39.1	-756.6	305.1	278.1	27.00	11.300	
3,200.0	2,980.2	3,194.5	3,062.3	22.8	17.7	-150.15	-150.15	-40.2	-791.1	318.9	290.7	28.20	11.307	
3,300.0	3,069.7	3,293.6	3,155.1	23.8	18.4	-150.00	-150.00	-41.3	-825.5	332.7	303.3	29.41	11.314	
3,400.0	3,159.1	3,392.6	3,248.0	24.8	19.1	-149.86	-149.86	-42.4	-859.9	346.5	315.9	30.61	11.319	
3,500.0	3,248.6	3,491.7	3,340.8	25.8	19.9	-149.74	-149.74	-43.5	-894.4	360.3	328.5	31.82	11.324	
3,600.0	3,338.0	3,590.7	3,433.7	26.8	20.6	-149.62	-149.62	-44.6	-928.8	374.1	341.1	33.02	11.329	
3,700.0	3,427.5	3,689.7	3,526.5	27.7	21.4	-149.51	-149.51	-45.7	-963.2	387.9	353.7	34.23	11.333	
3,800.0	3,516.9	3,788.8	3,619.4	28.7	22.1	-149.41	-149.41	-46.8	-997.7	401.8	366.3	35.44	11.336	
3,900.0	3,606.4	3,887.8	3,712.2	29.7	22.8	-149.32	-149.32	-47.9	-1,032.1	415.6	378.9	36.65	11.339	
4,000.0	3,695.8	3,986.8	3,805.1	30.7	23.6	-149.23	-149.23	-49.0	-1,066.6	429.4	391.5	37.86	11.342	
4,100.0	3,785.3	4,085.9	3,897.9	31.7	24.3	-149.15	-149.15	-50.1	-1,101.0	443.2	404.1	39.07	11.344	
4,200.0	3,874.7	4,184.9	3,990.8	32.7	25.1	-149.07	-149.07	-51.2	-1,135.4	457.0	416.8	40.28	11.347	
4,300.0	3,964.2	4,284.0	4,083.7	33.7	25.8	-149.00	-149.00	-52.3	-1,169.9	470.9	429.4	41.49	11.349	
4,400.0	4,053.6	4,383.0	4,176.5	34.6	26.5	-148.93	-148.93	-53.4	-1,204.3	484.7	442.0	42.70	11.351	
4,500.0	4,143.1	4,482.0	4,269.4	35.6	27.3	-148.87	-148.87	-54.5	-1,238.7	498.5	454.6	43.91	11.352	
4,600.0	4,232.5	4,581.1	4,362.2	36.6	28.0	-148.81	-148.81	-55.6	-1,273.2	512.3	467.2	45.12	11.354	
4,700.0	4,322.0	4,680.1	4,455.1	37.6	28.8	-148.75	-148.75	-56.6	-1,307.6	526.1	479.8	46.33	11.355	
4,800.0	4,411.4	4,779.2	4,547.9	38.6	29.5	-148.69	-148.69	-57.7	-1,342.1	540.0	492.4	47.55	11.357	
4,900.0	4,500.9	4,878.2	4,640.8	39.6	30.3	-148.64	-148.64	-58.8	-1,376.5	553.8	505.0	48.76	11.358	

CC - Min centre to center distance or convergent point, SF - min separation factor, ES - min ellipse separation

Company:	BAYSWATER EXPLORATION & PRODUCTION	Local Co-ordinate Reference:	Well Booth 30-23
Project:	SEC.23-T7N-R65W	TVD Reference:	WELL @ 4913.0ft (Original Well Elev)
Reference Site:	Booth 10 Pad Sec.23-T7N-R65W	MD Reference:	WELL @ 4913.0ft (Original Well Elev)
Site Error:	0.0ft	North Reference:	True
Reference Well:	Booth 30-23	Survey Calculation Method:	Minimum Curvature
Well Error:	0.0ft	Output errors are at	2.00 sigma
Reference Wellbore	Wellbore #1	Database:	Landmark
Reference Design:	Plan #1 (5-07-12)	Offset TVD Reference:	Offset Datum

Offset Design Booth 10 Pad Sec.23-T7N-R65W - Booth 4-23 - Wellbore #1 - Plan #1 (5-07-12)													Offset Site Error:	0.0 ft
Survey Program: 0-MWD													Offset Well Error:	0.0 ft
Measured Depth (ft)	Vertical Depth (ft)	Measured Depth (ft)	Vertical Depth (ft)	Reference	Offset	Semi Major Axis Toolface (°)	Offset Wellbore Centre +N/-S (ft)	+E/-W (ft)	Between Centres (ft)	Between Ellipses (ft)	Minimum Separation (ft)	Separation Factor	Warning	
5,000.0	4,590.3	4,977.2	4,733.6	40.5	31.0	-148.59	-59.9	-1,410.9	567.6	517.6	49.97	11.359		
5,100.0	4,679.8	5,076.3	4,826.5	41.5	31.7	-148.54	-61.0	-1,445.4	581.4	530.3	51.18	11.360		
5,200.0	4,769.2	5,175.3	4,919.3	42.5	32.5	-148.50	-62.1	-1,479.8	595.3	542.9	52.40	11.361		
5,300.0	4,858.7	5,273.1	5,011.0	43.5	33.2	-148.46	-63.2	-1,513.8	609.1	555.5	53.60	11.365		
5,400.0	4,948.2	5,358.5	5,091.6	44.5	33.7	-148.56	-64.1	-1,542.1	624.1	569.5	54.53	11.444		
5,500.0	5,038.9	5,443.7	5,172.8	45.2	34.1	-148.82	-64.9	-1,567.9	638.9	583.6	55.27	11.560		
5,600.0	5,131.0	5,528.7	5,254.5	45.9	34.5	-149.07	-65.7	-1,591.2	652.9	597.0	55.92	11.677		
5,700.0	5,224.4	5,613.5	5,336.7	46.5	34.9	-149.33	-66.3	-1,612.0	666.2	609.7	56.47	11.796		
5,800.0	5,319.0	5,700.0	5,421.1	47.1	35.2	-149.59	-66.9	-1,630.8	678.6	621.6	56.94	11.917		
5,900.0	5,414.7	5,782.5	5,502.2	47.6	35.5	-149.84	-67.4	-1,646.3	690.1	632.8	57.31	12.042		
6,000.0	5,511.3	5,866.8	5,585.4	48.1	35.7	-150.10	-67.8	-1,659.7	700.9	643.3	57.59	12.170		
6,100.0	5,608.8	5,950.9	5,668.8	48.4	35.9	-150.37	-68.2	-1,670.6	710.8	653.0	57.78	12.301		
6,200.0	5,707.0	6,034.9	5,752.3	48.8	36.1	-150.63	-68.5	-1,679.1	719.8	661.9	57.89	12.435		
6,300.0	5,805.8	6,118.7	5,835.9	49.0	36.2	-150.90	-68.6	-1,685.1	728.0	670.1	57.91	12.572		
6,400.0	5,905.0	6,200.0	5,917.1	49.3	36.3	-151.16	-68.8	-1,688.6	735.4	677.5	57.84	12.713		
6,500.0	6,004.7	6,286.5	6,003.7	49.4	36.4	-151.44	-68.8	-1,689.8	741.9	684.2	57.69	12.859		
6,600.0	6,104.5	6,386.4	6,103.5	49.5	36.5	-151.67	-68.8	-1,689.8	746.3	688.8	57.54	12.971		
6,700.0	6,204.5	6,486.4	6,203.5	49.6	36.5	129.09	-68.8	-1,689.8	747.7	690.3	57.47	13.010		
6,800.0	6,304.5	6,586.4	6,303.5	49.7	36.6	129.09	-68.8	-1,689.8	747.7	690.1	57.66	12.967		
6,900.0	6,404.5	6,686.4	6,403.5	49.7	36.7	129.09	-68.8	-1,689.8	747.7	689.9	57.86	12.924		
7,000.0	6,504.5	6,786.4	6,503.5	49.8	36.8	129.09	-68.8	-1,689.8	747.7	689.7	58.05	12.881		
7,100.0	6,604.5	6,886.4	6,603.5	49.9	36.9	129.09	-68.8	-1,689.8	747.7	689.5	58.25	12.837		
7,200.0	6,704.5	6,986.4	6,703.5	49.9	37.0	129.09	-68.8	-1,689.8	747.7	689.3	58.45	12.793		
7,300.0	6,804.5	7,086.4	6,803.5	50.0	37.0	129.09	-68.8	-1,689.8	747.7	689.1	58.65	12.749		
7,400.0	6,904.5	7,186.4	6,903.5	50.1	37.1	129.09	-68.8	-1,689.8	747.7	688.9	58.86	12.704		
7,500.0	7,004.5	7,286.4	7,003.5	50.1	37.2	129.09	-68.8	-1,689.8	747.7	688.7	59.07	12.659		
7,600.0	7,104.5	7,386.4	7,103.5	50.2	37.3	129.09	-68.8	-1,689.8	747.7	688.5	59.28	12.614		
7,700.0	7,204.5	7,486.4	7,203.5	50.3	37.4	129.09	-68.8	-1,689.8	747.7	688.3	59.49	12.569		
7,800.0	7,304.5	7,586.4	7,303.5	50.3	37.5	129.09	-68.8	-1,689.8	747.7	688.0	59.71	12.523		
7,860.4	7,364.9	7,646.7	7,363.9	50.4	37.6	129.09	-68.8	-1,689.8	747.7	687.9	59.84	12.496		
7,895.5	7,400.0	7,672.9	7,390.0	50.4	37.6	129.09	-68.8	-1,689.8	747.8	687.9	59.91	12.483		

Company:	BAYSWATER EXPLORATION & PRODUCTION	Local Co-ordinate Reference:	Well Booth 30-23
Project:	SEC.23-T7N-R65W	TVD Reference:	WELL @ 4913.0ft (Original Well Elev)
Reference Site:	Booth 10 Pad Sec.23-T7N-R65W	MD Reference:	WELL @ 4913.0ft (Original Well Elev)
Site Error:	0.0ft	North Reference:	True
Reference Well:	Booth 30-23	Survey Calculation Method:	Minimum Curvature
Well Error:	0.0ft	Output errors are at	2.00 sigma
Reference Wellbore	Wellbore #1	Database:	Landmark
Reference Design:	Plan #1 (5-07-12)	Offset TVD Reference:	Offset Datum

Reference Depths are relative to WELL @ 4913.0ft (Original Well Elev) Coordinates are relative to: Booth 30-23
 Offset Depths are relative to Offset Datum
 Central Meridian is -105.500000 °
 Coordinate System is US State Plane 1983, Colorado Northern Zone
 Grid Convergence at Surface is: 0.56°



Company:	BAYSWATER EXPLORATION & PRODUCTION	Local Co-ordinate Reference:	Well Booth 30-23
Project:	SEC.23-T7N-R65W	TVD Reference:	WELL @ 4913.0ft (Original Well Elev)
Reference Site:	Booth 10 Pad Sec.23-T7N-R65W	MD Reference:	WELL @ 4913.0ft (Original Well Elev)
Site Error:	0.0ft	North Reference:	True
Reference Well:	Booth 30-23	Survey Calculation Method:	Minimum Curvature
Well Error:	0.0ft	Output errors are at	2.00 sigma
Reference Wellbore	Wellbore #1	Database:	Landmark
Reference Design:	Plan #1 (5-07-12)	Offset TVD Reference:	Offset Datum

Reference Depths are relative to WELL @ 4913.0ft (Original Well Elev) Coordinates are relative to: Booth 30-23
 Offset Depths are relative to Offset Datum
 Central Meridian is -105.500000 °
 Coordinate System is US State Plane 1983, Colorado Northern Zone
 Grid Convergence at Surface is: 0.56°

