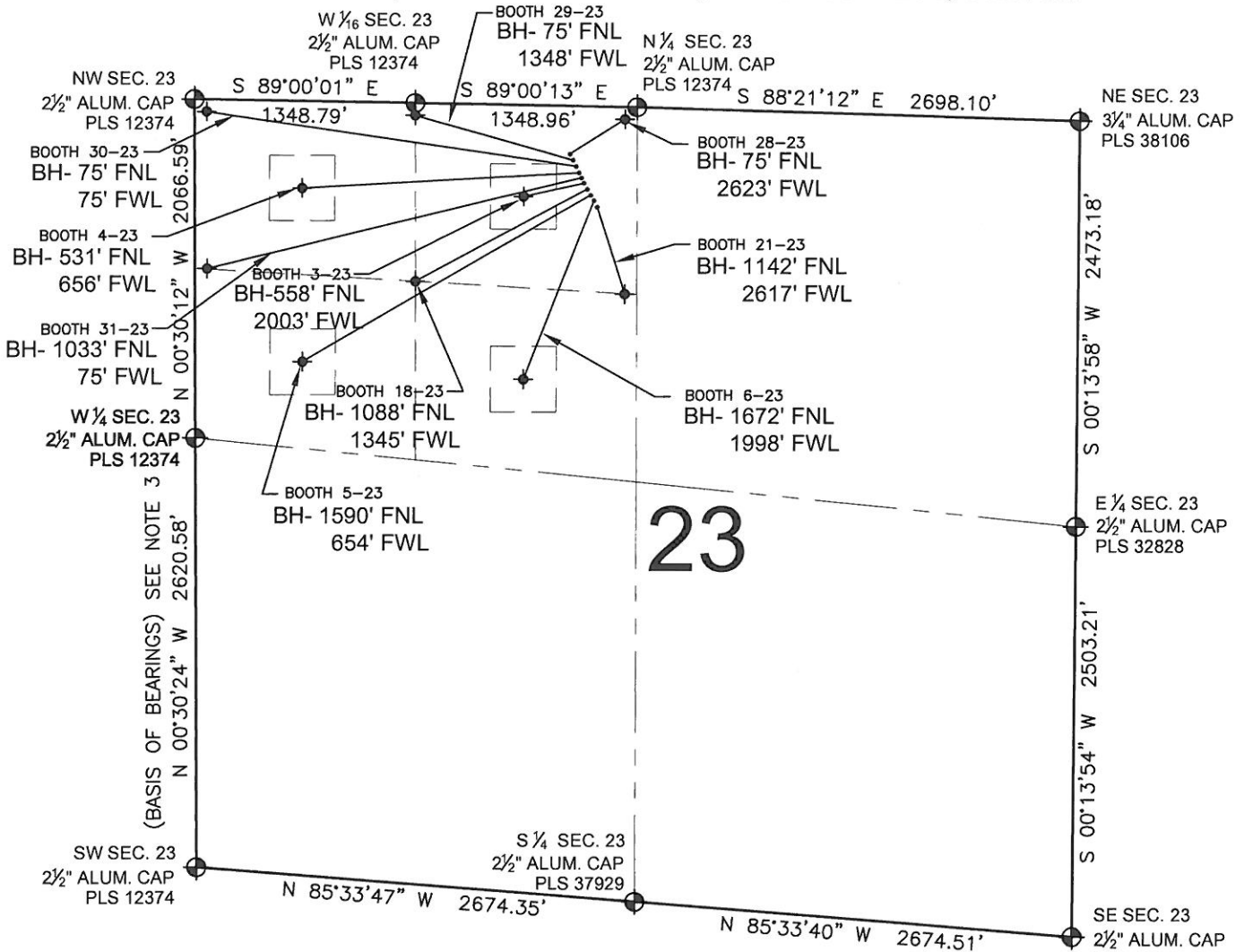


PAD DRAWING: BOOTH 10 PAD

SECTION 23, TOWNSHIP 7 NORTH, RANGE 65 WEST, 6TH P.M.



LEGEND

- = EXISTING MONUMENT ◆ = BOTTOM HOLE BH= BOTTOM HOLE
- = PROPOSED WELL ◆ = EXISTING WELL

NOTES:

1. THIS FIELD SURVEY CONFORMS TO THE MINIMUM STANDARDS SET BY THE C.O.G.C.C., RULE NO. 215
2. HORIZONTAL POSITIONS AND ORTHOMETRIC ELEVATIONS SHOWN AT THE WELL HEAD, ARE BASED ON GPS-RTK POSITIONS DERIVED FROM MINIMUM 2-HOUR STATIC OBSERVATIONS CORRECTED BY THE NATIONAL GEODETIC SURVEY ONLINE POSITIONING USER SERVICE, O.P.U.S. DATUM: HORIZONTAL = NAD83/2007, VERTICAL = NAVD88
3. THE BASIS OF BEARINGS ARE STATE PLANE COORDINATE SYSTEM GRID BEARINGS SHOWN HEREON BETWEEN THE DESCRIBED THE MONUMENTS SHOWN HEREON.
4. GRID DISTANCES ARE SHOWN, AS MEASURED IN THE FIELD, WITH TIES TO WELLS MEASURED PERPENDICULAR TO SECTION LINES.

NOTES:

- BOOTH 28-23 TO BE AT 386' FNL, 2334' FWL. BOTTOM HOLE AT 75' FNL & 2623' FWL.
- BOOTH 29-23 TO BE AT 401' FNL, 2340' FWL. BOTTOM HOLE AT 75' FNL & 1348' FWL.
- BOOTH 30-23 TO BE AT 416' FNL, 2345' FWL. BOTTOM HOLE AT 75' FNL & 75' FWL.
- BOOTH 4-23 TO BE AT 430' FNL, 2351' FWL. BOTTOM HOLE AT 531' FNL & 656' FWL.
- BOOTH 31-23 TO BE AT 445' FNL, 2357' FWL. BOTTOM HOLE AT 1033' FNL & 75' FWL.
- BOOTH 3-23 TO BE AT 460' FNL, 2362' FWL. BOTTOM HOLE AT 558' FNL & 2003' FWL.
- BOOTH 18-23 TO BE AT 475' FNL, 2368' FWL. BOTTOM HOLE AT 1088' FNL & 1345' FWL.
- BOOTH 5-23 TO BE AT 490' FNL, 2374' FWL. BOTTOM HOLE AT 1590' FNL & 654' FWL.
- BOOTH 6-23 TO BE AT 504' FNL, 2380' FWL. BOTTOM HOLE AT 1672' FNL & 1998' FWL.
- BOOTH 21-23 TO BE AT 519' FNL, 2385' FWL. BOTTOM HOLE AT 1142' FNL & 2617' FWL.

PREPARED BY:



BAYSWATER EXPLORATION & PRODUCTION, LLC

FIELD DATE: 03-20-12		PAD NAME: BOOTH 10 PAD	
DRAWING DATE: 04-26-12		SURFACE LOCATION: WELD COUNTY, COLORADO	
BY: KAG	REV: SMF	CHECK: KAG	NE 1/4 NW 1/4, SEC. 23, T7N, R65W

