

ENSIGN

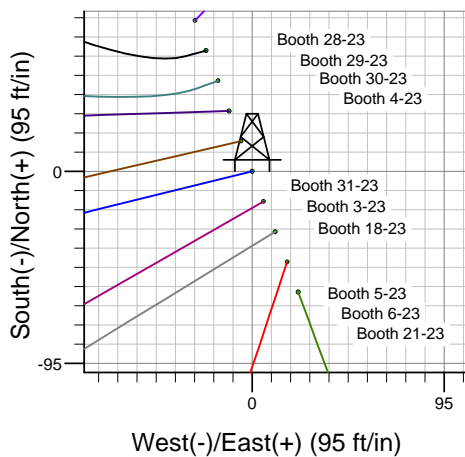
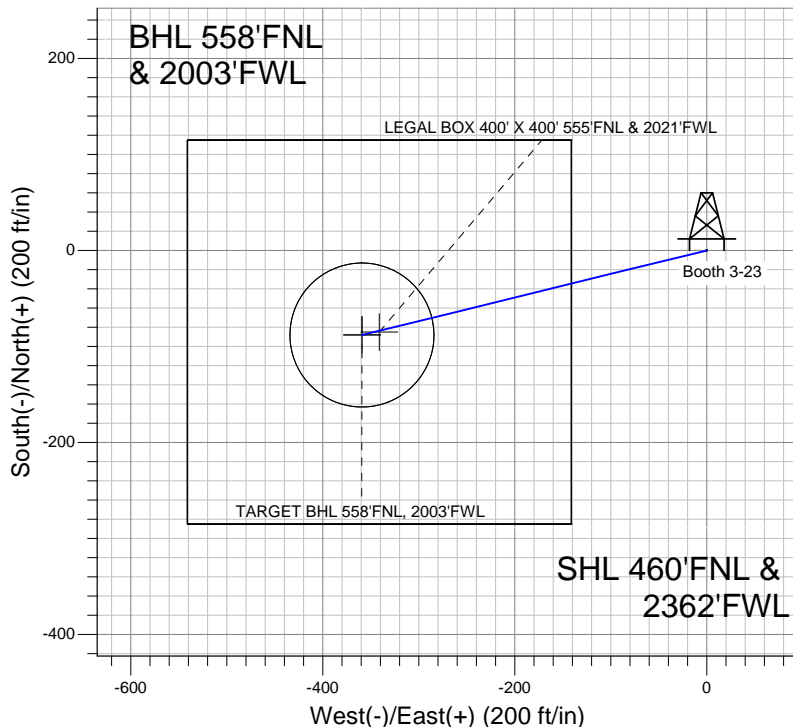
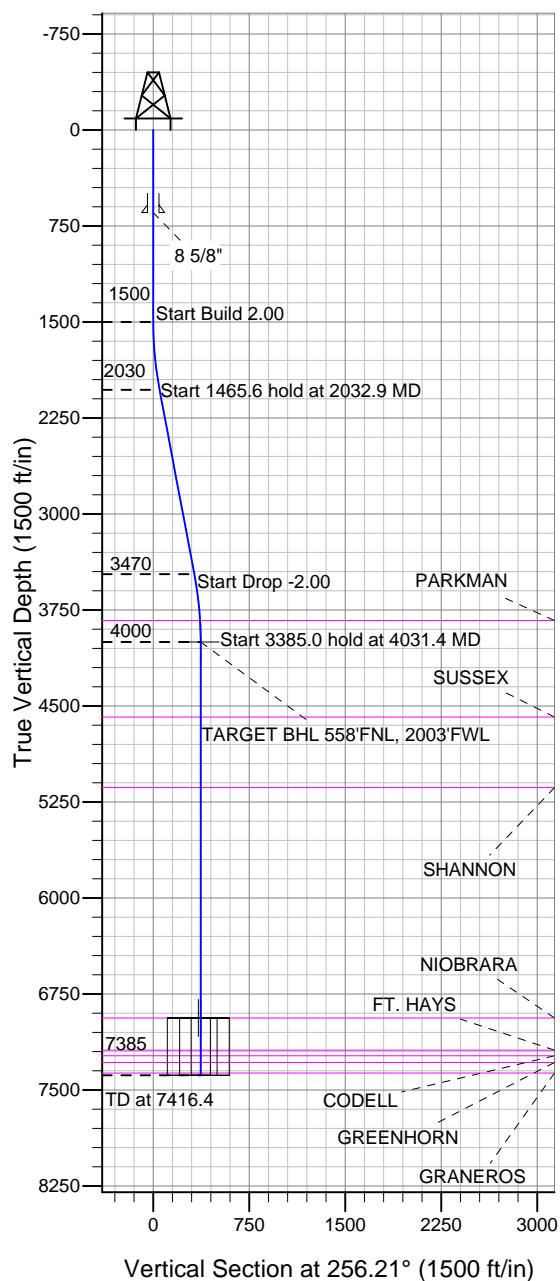
Directional

Well Name: Booth 3-23

Surface Location: Booth 10 Pad Sec.23-T7N-R65W
North American Datum 1983, US State Plane 1983Colorado Northern Zone
Ground Elevation: 4896.0

+N/-S	+E/-W	Northing	Easting	Latitude	Longitude	Slot
0.0	0.0	1449876.97	3241369.26	40.565066	-104.631227	
		Original Well Elev WELL @ 4912.0ft (Original Well Elev)				

BAYSWATER EXPLORATION & PRODUCTION



Booth 10 Pad Sec.23-T7N-R65W
Booth 3-23
Plan #1 (5-07-12)
14:01, May 11 2012



Azimuths to True North
Magnetic North: 8.69°
Magnetic Field
Strength: 53136.9snT
Dip Angle: 67.18°
Date: 5/7/2012
Model: IGRF2010

WELLBORE TARGET DETAILS (LAT/LONG)

Name	TVD	+N/-S	+E/-W	Latitude	Longitude	Shape
TARGET BHL 558'FNL, 2003'FWL	4000.0	-88.1	-359.2	40.564824	-104.632520	Point
LEGAL BOX 400' X 400' 555'FNL & 2021'FWL	6937.0	-85.2	-341.2	40.564832	-104.632455	Rectangle (Sides: L400.0 W400.0)
TARGET CIRCLE 558'FNL & 2003'FWL	6937.0	-88.1	-359.2	40.564824	-104.632520	Circle (Radius: 75.0)

SECTION DETAILS

Sec	MD	Inc	Azi	TVD	+N/-S	+E/-W	DLeg	TFace	VSec	Target
1	0.0	0.00	0.00	0.0	0.0	0.0	0.00	0.00	0.0	
2	1500.0	0.00	0.00	1500.0	0.0	0.0	0.00	0.00	0.0	
3	2032.9	10.66	256.21	2029.8	-11.8	-48.0	2.00	256.21	49.4	
4	3498.5	10.66	256.21	3470.2	-76.4	-311.3	0.00	0.00	320.5	
5	4031.4	0.00	0.00	4000.0	-88.1	-359.2	2.00	180.00	369.9	TARGET BHL 558'FNL, 2003'FWL
6	7416.4	0.00	0.00	7385.0	-88.1	-359.2	0.00	0.00	369.9	



BAYSWATER EXPLORATION & PRODUCTION

SEC.23-T7N-R65W

Booth 10 Pad Sec.23-T7N-R65W

Booth 3-23

Wellbore #1

Plan: Plan #1 (5-07-12)

Standard Planning Report

11 May, 2012

Database:	Landmark	Local Co-ordinate Reference:	Well Booth 3-23
Company:	BAYSWATER EXPLORATION & PRODUCTION	TVD Reference:	WELL @ 4912.0ft (Original Well Elev)
Project:	SEC.23-T7N-R65W	MD Reference:	WELL @ 4912.0ft (Original Well Elev)
Site:	Booth 10 Pad Sec.23-T7N-R65W	North Reference:	True
Well:	Booth 3-23	Survey Calculation Method:	Minimum Curvature
Wellbore:	Wellbore #1		
Design:	Plan #1 (5-07-12)		

Project	SEC.23-T7N-R65W, Weld County, CO		
Map System:	US State Plane 1983	System Datum:	Mean Sea Level
Geo Datum:	North American Datum 1983		Using Well Reference Point
Map Zone:	Colorado Northern Zone		Using geodetic scale factor

Booth 10 Pad Sec.23-T7N-R65W					
Site Position:		Northing:	1,449,951.39 ft	Latitude:	40.565271
From:	Lat/Long	Easting:	3,241,340.20 ft	Longitude:	-104.631329
Position Uncertainty:	0.0 ft	Slot Radius:	"	Grid Convergence:	0.56 °

Well	Booth 3-23					
Well Position	+N/-S	-74.7 ft	Northing:	1,449,876.97 ft	Latitude:	40.565066
	+E/-W	28.3 ft	Easting:	3,241,369.26 ft	Longitude:	-104.631227
Position Uncertainty		0.0 ft	Wellhead Elevation:	ft	Ground Level:	4,896.0 ft

Wellbore	Wellbore #1				
Magnetics	Model Name	Sample Date	Declination (°)	Dip Angle (°)	Field Strength (nT)
	IGRF2010	5/7/2012	8.69	67.18	53,137

Design	Plan #1 (5-07-12)			
Audit Notes:				
Version:	Phase:	PROTOTYPE	Tie On Depth:	0.0
Vertical Section:	Depth From (TVD) (ft)	+N/-S (ft)	+E/-W (ft)	Direction (°)
	0.0	0.0	0.0	256.21

Plan Sections										
Measured Depth (ft)	Inclination (°)	Azimuth (°)	Vertical Depth (ft)	+N/-S (ft)	+E/-W (ft)	Dogleg Rate (°/100ft)	Build Rate (°/100ft)	Turn Rate (°/100ft)	TFO (°)	Target
0.0	0.00	0.00	0.0	0.0	0.0	0.00	0.00	0.00	0.00	
1,500.0	0.00	0.00	1,500.0	0.0	0.0	0.00	0.00	0.00	0.00	
2,032.9	10.66	256.21	2,029.8	-11.8	-48.0	2.00	2.00	0.00	256.21	
3,498.5	10.66	256.21	3,470.2	-76.4	-311.3	0.00	0.00	0.00	0.00	
4,031.4	0.00	0.00	4,000.0	-88.1	-359.2	2.00	-2.00	0.00	180.00	TARGET BHL 558°
7,416.4	0.00	0.00	7,385.0	-88.1	-359.2	0.00	0.00	0.00	0.00	

Database:	Landmark	Local Co-ordinate Reference:	Well Booth 3-23
Company:	BAYSWATER EXPLORATION & PRODUCTION	TVD Reference:	WELL @ 4912.0ft (Original Well Elev)
Project:	SEC.23-T7N-R65W	MD Reference:	WELL @ 4912.0ft (Original Well Elev)
Site:	Booth 10 Pad Sec.23-T7N-R65W	North Reference:	True
Well:	Booth 3-23	Survey Calculation Method:	Minimum Curvature
Wellbore:	Wellbore #1		
Design:	Plan #1 (5-07-12)		

Planned Survey

Measured Depth (ft)	Inclination (°)	Azimuth (°)	Vertical Depth (ft)	+N/-S (ft)	+E/-W (ft)	Vertical Section (ft)	Dogleg Rate (°/100ft)	Build Rate (°/100ft)	Turn Rate (°/100ft)
0.0	0.00	0.00	0.0	0.0	0.0	0.0	0.00	0.00	0.00
40.0	0.00	0.00	40.0	0.0	0.0	0.0	0.00	0.00	0.00
80.0	0.00	0.00	80.0	0.0	0.0	0.0	0.00	0.00	0.00
120.0	0.00	0.00	120.0	0.0	0.0	0.0	0.00	0.00	0.00
160.0	0.00	0.00	160.0	0.0	0.0	0.0	0.00	0.00	0.00
200.0	0.00	0.00	200.0	0.0	0.0	0.0	0.00	0.00	0.00
240.0	0.00	0.00	240.0	0.0	0.0	0.0	0.00	0.00	0.00
280.0	0.00	0.00	280.0	0.0	0.0	0.0	0.00	0.00	0.00
320.0	0.00	0.00	320.0	0.0	0.0	0.0	0.00	0.00	0.00
360.0	0.00	0.00	360.0	0.0	0.0	0.0	0.00	0.00	0.00
400.0	0.00	0.00	400.0	0.0	0.0	0.0	0.00	0.00	0.00
440.0	0.00	0.00	440.0	0.0	0.0	0.0	0.00	0.00	0.00
480.0	0.00	0.00	480.0	0.0	0.0	0.0	0.00	0.00	0.00
520.0	0.00	0.00	520.0	0.0	0.0	0.0	0.00	0.00	0.00
560.0	0.00	0.00	560.0	0.0	0.0	0.0	0.00	0.00	0.00
600.0	0.00	0.00	600.0	0.0	0.0	0.0	0.00	0.00	0.00
640.0	0.00	0.00	640.0	0.0	0.0	0.0	0.00	0.00	0.00
645.0	0.00	0.00	645.0	0.0	0.0	0.0	0.00	0.00	0.00
8 5/8"									
680.0	0.00	0.00	680.0	0.0	0.0	0.0	0.00	0.00	0.00
720.0	0.00	0.00	720.0	0.0	0.0	0.0	0.00	0.00	0.00
760.0	0.00	0.00	760.0	0.0	0.0	0.0	0.00	0.00	0.00
800.0	0.00	0.00	800.0	0.0	0.0	0.0	0.00	0.00	0.00
840.0	0.00	0.00	840.0	0.0	0.0	0.0	0.00	0.00	0.00
880.0	0.00	0.00	880.0	0.0	0.0	0.0	0.00	0.00	0.00
920.0	0.00	0.00	920.0	0.0	0.0	0.0	0.00	0.00	0.00
960.0	0.00	0.00	960.0	0.0	0.0	0.0	0.00	0.00	0.00
1,000.0	0.00	0.00	1,000.0	0.0	0.0	0.0	0.00	0.00	0.00
1,040.0	0.00	0.00	1,040.0	0.0	0.0	0.0	0.00	0.00	0.00
1,080.0	0.00	0.00	1,080.0	0.0	0.0	0.0	0.00	0.00	0.00
1,120.0	0.00	0.00	1,120.0	0.0	0.0	0.0	0.00	0.00	0.00
1,160.0	0.00	0.00	1,160.0	0.0	0.0	0.0	0.00	0.00	0.00
1,200.0	0.00	0.00	1,200.0	0.0	0.0	0.0	0.00	0.00	0.00
1,240.0	0.00	0.00	1,240.0	0.0	0.0	0.0	0.00	0.00	0.00
1,280.0	0.00	0.00	1,280.0	0.0	0.0	0.0	0.00	0.00	0.00
1,320.0	0.00	0.00	1,320.0	0.0	0.0	0.0	0.00	0.00	0.00
1,360.0	0.00	0.00	1,360.0	0.0	0.0	0.0	0.00	0.00	0.00
1,400.0	0.00	0.00	1,400.0	0.0	0.0	0.0	0.00	0.00	0.00
1,440.0	0.00	0.00	1,440.0	0.0	0.0	0.0	0.00	0.00	0.00
1,480.0	0.00	0.00	1,480.0	0.0	0.0	0.0	0.00	0.00	0.00
1,500.0	0.00	0.00	1,500.0	0.0	0.0	0.0	0.00	0.00	0.00
1,520.0	0.40	256.21	1,520.0	0.0	-0.1	0.1	2.00	2.00	0.00
1,560.0	1.20	256.21	1,560.0	-0.1	-0.6	0.6	2.00	2.00	0.00
1,600.0	2.00	256.21	1,600.0	-0.4	-1.7	1.7	2.00	2.00	0.00
1,640.0	2.80	256.21	1,639.9	-0.8	-3.3	3.4	2.00	2.00	0.00
1,680.0	3.60	256.21	1,679.9	-1.3	-5.5	5.7	2.00	2.00	0.00
1,720.0	4.40	256.21	1,719.8	-2.0	-8.2	8.4	2.00	2.00	0.00
1,760.0	5.20	256.21	1,759.6	-2.8	-11.5	11.8	2.00	2.00	0.00
1,800.0	6.00	256.21	1,799.5	-3.7	-15.2	15.7	2.00	2.00	0.00
1,840.0	6.80	256.21	1,839.2	-4.8	-19.6	20.2	2.00	2.00	0.00
1,880.0	7.60	256.21	1,878.9	-6.0	-24.4	25.2	2.00	2.00	0.00
1,920.0	8.40	256.21	1,918.5	-7.3	-29.8	30.7	2.00	2.00	0.00
1,960.0	9.20	256.21	1,958.0	-8.8	-35.8	36.9	2.00	2.00	0.00

Database:	Landmark	Local Co-ordinate Reference:	Well Booth 3-23
Company:	BAYSWATER EXPLORATION & PRODUCTION	TVD Reference:	WELL @ 4912.0ft (Original Well Elev)
Project:	SEC.23-T7N-R65W	MD Reference:	WELL @ 4912.0ft (Original Well Elev)
Site:	Booth 10 Pad Sec.23-T7N-R65W	North Reference:	True
Well:	Booth 3-23	Survey Calculation Method:	Minimum Curvature
Wellbore:	Wellbore #1		
Design:	Plan #1 (5-07-12)		

Planned Survey									
Measured Depth (ft)	Inclination (°)	Azimuth (°)	Vertical Depth (ft)	+N/-S (ft)	+E/-W (ft)	Vertical Section (ft)	Dogleg Rate (°/100ft)	Build Rate (°/100ft)	Turn Rate (°/100ft)
2,000.0	10.00	256.21	1,997.5	-10.4	-42.3	43.5	2.00	2.00	0.00
2,032.9	10.66	256.21	2,029.8	-11.8	-48.0	49.4	2.00	2.00	0.00
2,040.0	10.66	256.21	2,036.8	-12.1	-49.3	50.7	0.00	0.00	0.00
2,080.0	10.66	256.21	2,076.1	-13.9	-56.5	58.1	0.00	0.00	0.00
2,120.0	10.66	256.21	2,115.4	-15.6	-63.6	65.5	0.00	0.00	0.00
2,160.0	10.66	256.21	2,154.7	-17.4	-70.8	72.9	0.00	0.00	0.00
2,200.0	10.66	256.21	2,194.0	-19.1	-78.0	80.3	0.00	0.00	0.00
2,240.0	10.66	256.21	2,233.4	-20.9	-85.2	87.7	0.00	0.00	0.00
2,280.0	10.66	256.21	2,272.7	-22.7	-92.4	95.1	0.00	0.00	0.00
2,320.0	10.66	256.21	2,312.0	-24.4	-99.6	102.5	0.00	0.00	0.00
2,360.0	10.66	256.21	2,351.3	-26.2	-106.8	109.9	0.00	0.00	0.00
2,400.0	10.66	256.21	2,390.6	-28.0	-113.9	117.3	0.00	0.00	0.00
2,440.0	10.66	256.21	2,429.9	-29.7	-121.1	124.7	0.00	0.00	0.00
2,480.0	10.66	256.21	2,469.2	-31.5	-128.3	132.1	0.00	0.00	0.00
2,520.0	10.66	256.21	2,508.5	-33.2	-135.5	139.5	0.00	0.00	0.00
2,560.0	10.66	256.21	2,547.8	-35.0	-142.7	146.9	0.00	0.00	0.00
2,600.0	10.66	256.21	2,587.1	-36.8	-149.9	154.3	0.00	0.00	0.00
2,640.0	10.66	256.21	2,626.5	-38.5	-157.0	161.7	0.00	0.00	0.00
2,680.0	10.66	256.21	2,665.8	-40.3	-164.2	169.1	0.00	0.00	0.00
2,720.0	10.66	256.21	2,705.1	-42.1	-171.4	176.5	0.00	0.00	0.00
2,760.0	10.66	256.21	2,744.4	-43.8	-178.6	183.9	0.00	0.00	0.00
2,800.0	10.66	256.21	2,783.7	-45.6	-185.8	191.3	0.00	0.00	0.00
2,840.0	10.66	256.21	2,823.0	-47.3	-193.0	198.7	0.00	0.00	0.00
2,880.0	10.66	256.21	2,862.3	-49.1	-200.2	206.1	0.00	0.00	0.00
2,920.0	10.66	256.21	2,901.6	-50.9	-207.3	213.5	0.00	0.00	0.00
2,960.0	10.66	256.21	2,940.9	-52.6	-214.5	220.9	0.00	0.00	0.00
3,000.0	10.66	256.21	2,980.2	-54.4	-221.7	228.3	0.00	0.00	0.00
3,040.0	10.66	256.21	3,019.6	-56.2	-228.9	235.7	0.00	0.00	0.00
3,080.0	10.66	256.21	3,058.9	-57.9	-236.1	243.1	0.00	0.00	0.00
3,120.0	10.66	256.21	3,098.2	-59.7	-243.3	250.5	0.00	0.00	0.00
3,160.0	10.66	256.21	3,137.5	-61.5	-250.4	257.9	0.00	0.00	0.00
3,200.0	10.66	256.21	3,176.8	-63.2	-257.6	265.3	0.00	0.00	0.00
3,240.0	10.66	256.21	3,216.1	-65.0	-264.8	272.7	0.00	0.00	0.00
3,280.0	10.66	256.21	3,255.4	-66.7	-272.0	280.1	0.00	0.00	0.00
3,320.0	10.66	256.21	3,294.7	-68.5	-279.2	287.5	0.00	0.00	0.00
3,360.0	10.66	256.21	3,334.0	-70.3	-286.4	294.9	0.00	0.00	0.00
3,400.0	10.66	256.21	3,373.3	-72.0	-293.6	302.3	0.00	0.00	0.00
3,440.0	10.66	256.21	3,412.7	-73.8	-300.7	309.7	0.00	0.00	0.00
3,480.0	10.66	256.21	3,452.0	-75.6	-307.9	317.1	0.00	0.00	0.00
3,498.5	10.66	256.21	3,470.2	-76.4	-311.3	320.5	0.00	0.00	0.00
3,520.0	10.23	256.21	3,491.3	-77.3	-315.0	324.4	2.00	-2.00	0.00
3,560.0	9.43	256.21	3,530.7	-78.9	-321.7	331.2	2.00	-2.00	0.00
3,600.0	8.63	256.21	3,570.2	-80.4	-327.8	337.5	2.00	-2.00	0.00
3,640.0	7.83	256.21	3,609.8	-81.8	-333.3	343.2	2.00	-2.00	0.00
3,680.0	7.03	256.21	3,649.5	-83.0	-338.3	348.4	2.00	-2.00	0.00
3,720.0	6.23	256.21	3,689.2	-84.1	-342.8	353.0	2.00	-2.00	0.00
3,760.0	5.43	256.21	3,729.0	-85.1	-346.8	357.1	2.00	-2.00	0.00
3,800.0	4.63	256.21	3,768.8	-85.9	-350.2	360.6	2.00	-2.00	0.00
3,840.0	3.83	256.21	3,808.7	-86.6	-353.0	363.5	2.00	-2.00	0.00
3,863.3	3.36	256.21	3,832.0	-87.0	-354.5	365.0	2.00	-2.00	0.00
PARKMAN									
3,880.0	3.03	256.21	3,848.7	-87.2	-355.4	365.9	2.00	-2.00	0.00
3,920.0	2.23	256.21	3,888.6	-87.6	-357.1	367.7	2.00	-2.00	0.00

Database:	Landmark	Local Co-ordinate Reference:	Well Booth 3-23
Company:	BAYSWATER EXPLORATION & PRODUCTION	TVD Reference:	WELL @ 4912.0ft (Original Well Elev)
Project:	SEC.23-T7N-R65W	MD Reference:	WELL @ 4912.0ft (Original Well Elev)
Site:	Booth 10 Pad Sec.23-T7N-R65W	North Reference:	True
Well:	Booth 3-23	Survey Calculation Method:	Minimum Curvature
Wellbore:	Wellbore #1		
Design:	Plan #1 (5-07-12)		

Planned Survey

Measured Depth (ft)	Inclination (°)	Azimuth (°)	Vertical Depth (ft)	+N/-S (ft)	+E/-W (ft)	Vertical Section (ft)	Dogleg Rate (°/100ft)	Build Rate (°/100ft)	Turn Rate (°/100ft)
3,960.0	1.43	256.21	3,928.6	-87.9	-358.4	369.0	2.00	-2.00	0.00
4,000.0	0.63	256.21	3,968.6	-88.1	-359.1	369.7	2.00	-2.00	0.00
4,031.4	0.00	0.00	4,000.0	-88.1	-359.2	369.9	2.00	-2.00	330.32
TARGET BHL 558'FNL, 2003'FWL									
4,040.0	0.00	0.00	4,008.6	-88.1	-359.2	369.9	0.00	0.00	0.00
4,080.0	0.00	0.00	4,048.6	-88.1	-359.2	369.9	0.00	0.00	0.00
4,120.0	0.00	0.00	4,088.6	-88.1	-359.2	369.9	0.00	0.00	0.00
4,160.0	0.00	0.00	4,128.6	-88.1	-359.2	369.9	0.00	0.00	0.00
4,200.0	0.00	0.00	4,168.6	-88.1	-359.2	369.9	0.00	0.00	0.00
4,240.0	0.00	0.00	4,208.6	-88.1	-359.2	369.9	0.00	0.00	0.00
4,280.0	0.00	0.00	4,248.6	-88.1	-359.2	369.9	0.00	0.00	0.00
4,320.0	0.00	0.00	4,288.6	-88.1	-359.2	369.9	0.00	0.00	0.00
4,360.0	0.00	0.00	4,328.6	-88.1	-359.2	369.9	0.00	0.00	0.00
4,400.0	0.00	0.00	4,368.6	-88.1	-359.2	369.9	0.00	0.00	0.00
4,440.0	0.00	0.00	4,408.6	-88.1	-359.2	369.9	0.00	0.00	0.00
4,480.0	0.00	0.00	4,448.6	-88.1	-359.2	369.9	0.00	0.00	0.00
4,520.0	0.00	0.00	4,488.6	-88.1	-359.2	369.9	0.00	0.00	0.00
4,560.0	0.00	0.00	4,528.6	-88.1	-359.2	369.9	0.00	0.00	0.00
4,600.0	0.00	0.00	4,568.6	-88.1	-359.2	369.9	0.00	0.00	0.00
4,618.4	0.00	0.00	4,587.0	-88.1	-359.2	369.9	0.00	0.00	0.00
SUSSEX									
4,640.0	0.00	0.00	4,608.6	-88.1	-359.2	369.9	0.00	0.00	0.00
4,680.0	0.00	0.00	4,648.6	-88.1	-359.2	369.9	0.00	0.00	0.00
4,720.0	0.00	0.00	4,688.6	-88.1	-359.2	369.9	0.00	0.00	0.00
4,760.0	0.00	0.00	4,728.6	-88.1	-359.2	369.9	0.00	0.00	0.00
4,800.0	0.00	0.00	4,768.6	-88.1	-359.2	369.9	0.00	0.00	0.00
4,840.0	0.00	0.00	4,808.6	-88.1	-359.2	369.9	0.00	0.00	0.00
4,880.0	0.00	0.00	4,848.6	-88.1	-359.2	369.9	0.00	0.00	0.00
4,920.0	0.00	0.00	4,888.6	-88.1	-359.2	369.9	0.00	0.00	0.00
4,960.0	0.00	0.00	4,928.6	-88.1	-359.2	369.9	0.00	0.00	0.00
5,000.0	0.00	0.00	4,968.6	-88.1	-359.2	369.9	0.00	0.00	0.00
5,040.0	0.00	0.00	5,008.6	-88.1	-359.2	369.9	0.00	0.00	0.00
5,080.0	0.00	0.00	5,048.6	-88.1	-359.2	369.9	0.00	0.00	0.00
5,120.0	0.00	0.00	5,088.6	-88.1	-359.2	369.9	0.00	0.00	0.00
5,160.0	0.00	0.00	5,128.6	-88.1	-359.2	369.9	0.00	0.00	0.00
5,168.4	0.00	0.00	5,137.0	-88.1	-359.2	369.9	0.00	0.00	0.00
SHANNON									
5,200.0	0.00	0.00	5,168.6	-88.1	-359.2	369.9	0.00	0.00	0.00
5,240.0	0.00	0.00	5,208.6	-88.1	-359.2	369.9	0.00	0.00	0.00
5,280.0	0.00	0.00	5,248.6	-88.1	-359.2	369.9	0.00	0.00	0.00
5,320.0	0.00	0.00	5,288.6	-88.1	-359.2	369.9	0.00	0.00	0.00
5,360.0	0.00	0.00	5,328.6	-88.1	-359.2	369.9	0.00	0.00	0.00
5,400.0	0.00	0.00	5,368.6	-88.1	-359.2	369.9	0.00	0.00	0.00
5,440.0	0.00	0.00	5,408.6	-88.1	-359.2	369.9	0.00	0.00	0.00
5,480.0	0.00	0.00	5,448.6	-88.1	-359.2	369.9	0.00	0.00	0.00
5,520.0	0.00	0.00	5,488.6	-88.1	-359.2	369.9	0.00	0.00	0.00
5,560.0	0.00	0.00	5,528.6	-88.1	-359.2	369.9	0.00	0.00	0.00
5,600.0	0.00	0.00	5,568.6	-88.1	-359.2	369.9	0.00	0.00	0.00
5,640.0	0.00	0.00	5,608.6	-88.1	-359.2	369.9	0.00	0.00	0.00
5,680.0	0.00	0.00	5,648.6	-88.1	-359.2	369.9	0.00	0.00	0.00
5,720.0	0.00	0.00	5,688.6	-88.1	-359.2	369.9	0.00	0.00	0.00
5,760.0	0.00	0.00	5,728.6	-88.1	-359.2	369.9	0.00	0.00	0.00
5,800.0	0.00	0.00	5,768.6	-88.1	-359.2	369.9	0.00	0.00	0.00

Database:	Landmark	Local Co-ordinate Reference:	Well Booth 3-23
Company:	BAYSWATER EXPLORATION & PRODUCTION	TVD Reference:	WELL @ 4912.0ft (Original Well Elev)
Project:	SEC.23-T7N-R65W	MD Reference:	WELL @ 4912.0ft (Original Well Elev)
Site:	Booth 10 Pad Sec.23-T7N-R65W	North Reference:	True
Well:	Booth 3-23	Survey Calculation Method:	Minimum Curvature
Wellbore:	Wellbore #1		
Design:	Plan #1 (5-07-12)		

Planned Survey									
Measured Depth (ft)	Inclination (°)	Azimuth (°)	Vertical Depth (ft)	+N/-S (ft)	+E/-W (ft)	Vertical Section (ft)	Dogleg Rate (°/100ft)	Build Rate (°/100ft)	Turn Rate (°/100ft)
5,840.0	0.00	0.00	5,808.6	-88.1	-359.2	369.9	0.00	0.00	0.00
5,880.0	0.00	0.00	5,848.6	-88.1	-359.2	369.9	0.00	0.00	0.00
5,920.0	0.00	0.00	5,888.6	-88.1	-359.2	369.9	0.00	0.00	0.00
5,960.0	0.00	0.00	5,928.6	-88.1	-359.2	369.9	0.00	0.00	0.00
6,000.0	0.00	0.00	5,968.6	-88.1	-359.2	369.9	0.00	0.00	0.00
6,040.0	0.00	0.00	6,008.6	-88.1	-359.2	369.9	0.00	0.00	0.00
6,080.0	0.00	0.00	6,048.6	-88.1	-359.2	369.9	0.00	0.00	0.00
6,120.0	0.00	0.00	6,088.6	-88.1	-359.2	369.9	0.00	0.00	0.00
6,160.0	0.00	0.00	6,128.6	-88.1	-359.2	369.9	0.00	0.00	0.00
6,200.0	0.00	0.00	6,168.6	-88.1	-359.2	369.9	0.00	0.00	0.00
6,240.0	0.00	0.00	6,208.6	-88.1	-359.2	369.9	0.00	0.00	0.00
6,280.0	0.00	0.00	6,248.6	-88.1	-359.2	369.9	0.00	0.00	0.00
6,320.0	0.00	0.00	6,288.6	-88.1	-359.2	369.9	0.00	0.00	0.00
6,360.0	0.00	0.00	6,328.6	-88.1	-359.2	369.9	0.00	0.00	0.00
6,400.0	0.00	0.00	6,368.6	-88.1	-359.2	369.9	0.00	0.00	0.00
6,440.0	0.00	0.00	6,408.6	-88.1	-359.2	369.9	0.00	0.00	0.00
6,480.0	0.00	0.00	6,448.6	-88.1	-359.2	369.9	0.00	0.00	0.00
6,520.0	0.00	0.00	6,488.6	-88.1	-359.2	369.9	0.00	0.00	0.00
6,560.0	0.00	0.00	6,528.6	-88.1	-359.2	369.9	0.00	0.00	0.00
6,600.0	0.00	0.00	6,568.6	-88.1	-359.2	369.9	0.00	0.00	0.00
6,640.0	0.00	0.00	6,608.6	-88.1	-359.2	369.9	0.00	0.00	0.00
6,680.0	0.00	0.00	6,648.6	-88.1	-359.2	369.9	0.00	0.00	0.00
6,720.0	0.00	0.00	6,688.6	-88.1	-359.2	369.9	0.00	0.00	0.00
6,760.0	0.00	0.00	6,728.6	-88.1	-359.2	369.9	0.00	0.00	0.00
6,800.0	0.00	0.00	6,768.6	-88.1	-359.2	369.9	0.00	0.00	0.00
6,840.0	0.00	0.00	6,808.6	-88.1	-359.2	369.9	0.00	0.00	0.00
6,880.0	0.00	0.00	6,848.6	-88.1	-359.2	369.9	0.00	0.00	0.00
6,920.0	0.00	0.00	6,888.6	-88.1	-359.2	369.9	0.00	0.00	0.00
6,960.0	0.00	0.00	6,928.6	-88.1	-359.2	369.9	0.00	0.00	0.00
6,968.4	0.00	0.00	6,937.0	-88.1	-359.2	369.9	0.00	0.00	0.00
NIORARA - LEGAL BOX 400' X 400' 555'FNL & 2021'FWL - TARGET CIRCLE 558'FNL & 2003'FWL									
7,000.0	0.00	0.00	6,968.6	-88.1	-359.2	369.9	0.00	0.00	0.00
7,040.0	0.00	0.00	7,008.6	-88.1	-359.2	369.9	0.00	0.00	0.00
7,080.0	0.00	0.00	7,048.6	-88.1	-359.2	369.9	0.00	0.00	0.00
7,120.0	0.00	0.00	7,088.6	-88.1	-359.2	369.9	0.00	0.00	0.00
7,160.0	0.00	0.00	7,128.6	-88.1	-359.2	369.9	0.00	0.00	0.00
7,200.0	0.00	0.00	7,168.6	-88.1	-359.2	369.9	0.00	0.00	0.00
7,220.4	0.00	0.00	7,189.0	-88.1	-359.2	369.9	0.00	0.00	0.00
FT. HAYS									
7,240.0	0.00	0.00	7,208.6	-88.1	-359.2	369.9	0.00	0.00	0.00
7,264.4	0.00	0.00	7,233.0	-88.1	-359.2	369.9	0.00	0.00	0.00
CODELL									
7,280.0	0.00	0.00	7,248.6	-88.1	-359.2	369.9	0.00	0.00	0.00
7,316.4	0.00	0.00	7,285.0	-88.1	-359.2	369.9	0.00	0.00	0.00
GREENHORN									
7,320.0	0.00	0.00	7,288.6	-88.1	-359.2	369.9	0.00	0.00	0.00
7,360.0	0.00	0.00	7,328.6	-88.1	-359.2	369.9	0.00	0.00	0.00
7,398.4	0.00	0.00	7,367.0	-88.1	-359.2	369.9	0.00	0.00	0.00
GRANEROS									
7,400.0	0.00	0.00	7,368.6	-88.1	-359.2	369.9	0.00	0.00	0.00
7,416.4	0.00	0.00	7,385.0	-88.1	-359.2	369.9	0.00	0.00	0.00

Database:	Landmark	Local Co-ordinate Reference:	Well Booth 3-23
Company:	BAYSWATER EXPLORATION & PRODUCTION	TVD Reference:	WELL @ 4912.0ft (Original Well Elev)
Project:	SEC.23-T7N-R65W	MD Reference:	WELL @ 4912.0ft (Original Well Elev)
Site:	Booth 10 Pad Sec.23-T7N-R65W	North Reference:	True
Well:	Booth 3-23	Survey Calculation Method:	Minimum Curvature
Wellbore:	Wellbore #1		
Design:	Plan #1 (5-07-12)		

Targets									
Target Name	Dip Angle	Dip Dir.	TVD	+N/-S	+E/-W	Northing	Easting	Latitude	Longitude
- hit/miss target	(°)	(°)	(ft)	(ft)	(ft)	(ft)	(ft)		
- Shape									
TARGET BHL 558'FN	0.00	0.00	4,000.0	-88.1	-359.2	1,449,785.31	3,241,010.91	40.564824	-104.632520
- plan hits target center									
- Point									
LEGAL BOX 400' X 400'	0.00	0.00	6,937.0	-85.2	-341.2	1,449,788.44	3,241,028.93	40.564832	-104.632455
- plan misses target center by 18.3ft at 6968.4ft MD (6937.0 TVD, -88.1 N, -359.2 E)									
- Rectangle (sides W400.0 H400.0 D448.0)									
TARGET CIRCLE 558'	0.00	0.00	6,937.0	-88.1	-359.2	1,449,785.31	3,241,010.91	40.564824	-104.632520
- plan hits target center									
- Circle (radius 75.0)									

Casing Points					
Measured Depth	Vertical Depth	Name		Casing Diameter	Hole Diameter
(ft)	(ft)			(")	(")
645.0	645.0	8 5/8"		8-5/8	12-1/4

Formations						
Measured Depth	Vertical Depth	Name		Lithology	Dip	Dip Direction
(ft)	(ft)				(°)	(°)
3,863.3	3,832.0	PARKMAN			0.00	
4,618.4	4,587.0	SUSSEX			0.00	
5,168.4	5,137.0	SHANNON			0.00	
6,968.4	6,937.0	NIOBRARA			0.00	
7,220.4	7,189.0	FT. HAYS			0.00	
7,264.4	7,233.0	CODELL			0.00	
7,316.4	7,285.0	GREENHORN			0.00	
7,398.4	7,367.0	GRANEROS			0.00	



BAYSWATER EXPLORATION & PRODUCTION

SEC.23-T7N-R65W

Booth 10 Pad Sec.23-T7N-R65W

Booth 3-23

Wellbore #1

Plan #1 (5-07-12)

Anticollision Report

11 May, 2012

Company:	BAYSWATER EXPLORATION & PRODUCTION	Local Co-ordinate Reference:	Well Booth 3-23
Project:	SEC.23-T7N-R65W	TVD Reference:	WELL @ 4912.0ft (Original Well Elev)
Reference Site:	Booth 10 Pad Sec.23-T7N-R65W	MD Reference:	WELL @ 4912.0ft (Original Well Elev)
Site Error:	0.0ft	North Reference:	True
Reference Well:	Booth 3-23	Survey Calculation Method:	Minimum Curvature
Well Error:	0.0ft	Output errors are at	2.00 sigma
Reference Wellbore	Wellbore #1	Database:	Landmark
Reference Design:	Plan #1 (5-07-12)	Offset TVD Reference:	Offset Datum

Reference	Plan #1 (5-07-12)		
Filter type:	NO GLOBAL FILTER: Using user defined selection & filtering criteria		
Interpolation Method:	MD Interval 100.0ft	Error Model:	ISCWSA
Depth Range:	Unlimited	Scan Method:	Closest Approach 3D
Results Limited by:	Maximum center-center distance of 10,000.0ft	Error Surface:	Elliptical Conic
Warning Levels Evaluated at:	2.00 Sigma		

Survey Tool Program	Date 5/7/2012			
From (ft)	To (ft)	Survey (Wellbore)	Tool Name	Description
0.0	7,416.4	Plan #1 (5-07-12) (Wellbore #1)	MWD	MWD - Standard

Summary						
Site Name	Reference Measured Depth (ft)	Offset Measured Depth (ft)	Distance Between Centres (ft)	Distance Between Ellipses (ft)	Separation Factor	Warning
Offset Well - Wellbore - Design						
Booth 10 Pad Sec.23-T7N-R65W						
Booth 18-23 - Wellbore #1 - Plan #1 (5-07-12)	400.0	400.0	15.9	14.4	10.129	CC
Booth 18-23 - Wellbore #1 - Plan #1 (5-07-12)	500.0	499.9	16.3	14.3	8.140	ES
Booth 18-23 - Wellbore #1 - Plan #1 (5-07-12)	600.0	599.5	18.4	16.0	7.571	SF
Booth 31-23 - Wellbore #1 - Plan #1 (5-07-12)	200.0	200.0	15.9	15.3	23.641	CC
Booth 31-23 - Wellbore #1 - Plan #1 (5-07-12)	300.0	299.9	16.3	15.1	14.623	ES
Booth 31-23 - Wellbore #1 - Plan #1 (5-07-12)	400.0	399.5	18.2	16.6	11.698	SF

Offset Design													Offset Site Error:	0.0ft
Booth 10 Pad Sec.23-T7N-R65W - Booth 18-23 - Wellbore #1 - Plan #1 (5-07-12)													Offset Well Error:	0.0ft
Survey Program: 0-MWD														
Reference	Offset	Semi Major Axis			Distance									
Measured Depth (ft)	Vertical Depth (ft)	Measured Depth (ft)	Vertical Depth (ft)	Reference (ft)	Offset (ft)	Highside Toolface (°)	Offset Wellbore Centre +N/-S (ft)	+E/-W (ft)	Between Centres (ft)	Between Ellipses (ft)	Minimum Separation (ft)	Separation Factor	Warning	
0.0	0.0	0.0	0.0	0.0	0.0	159.59	-14.9	5.6	15.9	15.9	0.00	N/A		
100.0	100.0	100.0	100.0	0.1	0.1	159.59	-14.9	5.6	15.9	15.7	0.22	70.906		
200.0	200.0	200.0	200.0	0.3	0.3	159.59	-14.9	5.6	15.9	15.3	0.67	23.635		
300.0	300.0	300.0	300.0	0.6	0.6	159.59	-14.9	5.6	15.9	14.8	1.12	14.181		
400.0	400.0	400.0	400.0	0.8	0.8	159.59	-14.9	5.6	15.9	14.4	1.57	10.129	CC	
500.0	500.0	499.9	499.8	1.0	1.0	165.64	-15.8	4.0	16.3	14.3	2.00	8.140	ES	
600.0	600.0	599.5	599.3	1.2	1.2	-178.53	-18.4	-0.5	18.4	16.0	2.43	7.571	SF	
700.0	700.0	698.6	698.1	1.5	1.4	-160.67	-22.7	-7.9	24.1	21.2	2.88	8.359		
800.0	800.0	797.1	795.8	1.7	1.7	-147.37	-28.6	-18.3	34.2	30.8	3.37	10.147		
900.0	900.0	894.6	892.1	1.9	2.0	-138.95	-36.1	-31.4	48.5	44.6	3.90	12.428		
1,000.0	1,000.0	990.9	986.8	2.1	2.3	-133.70	-45.1	-47.2	66.6	62.1	4.48	14.869		
1,100.0	1,100.0	1,086.0	1,079.4	2.4	2.7	-130.32	-55.5	-65.4	88.2	83.1	5.10	17.292		
1,200.0	1,200.0	1,181.7	1,172.1	2.6	3.2	-128.04	-67.2	-85.9	112.6	106.9	5.77	19.514		
1,300.0	1,300.0	1,278.5	1,265.9	2.8	3.7	-126.54	-79.2	-106.9	137.4	130.9	6.47	21.244		
1,400.0	1,400.0	1,375.3	1,359.7	3.0	4.2	-125.50	-91.3	-127.9	162.2	155.1	7.17	22.616		
1,500.0	1,500.0	1,472.1	1,453.4	3.3	4.7	-124.73	-103.3	-148.9	187.1	179.2	7.89	23.726		
1,600.0	1,600.0	1,569.4	1,547.6	3.5	5.2	-20.36	-115.3	-170.0	210.4	203.4	7.04	29.888		
1,700.0	1,699.8	1,667.3	1,642.4	3.7	5.7	-20.19	-127.4	-191.3	230.6	223.1	7.49	30.768		
1,800.0	1,799.5	1,765.9	1,737.8	3.9	6.2	-20.33	-139.7	-212.6	247.5	239.5	7.95	31.110		
1,900.0	1,898.7	1,864.9	1,833.7	4.1	6.7	-20.73	-151.9	-234.1	261.2	252.7	8.42	31.001		
2,000.0	1,997.5	1,964.3	1,930.0	4.4	7.3	-21.37	-164.3	-255.7	271.6	262.7	8.90	30.508		

CC - Min centre to center distance or convergent point, SF - min separation factor, ES - min ellipse separation

Company:	BAYSWATER EXPLORATION & PRODUCTION	Local Co-ordinate Reference:	Well Booth 3-23
Project:	SEC.23-T7N-R65W	TVD Reference:	WELL @ 4912.0ft (Original Well Elev)
Reference Site:	Booth 10 Pad Sec.23-T7N-R65W	MD Reference:	WELL @ 4912.0ft (Original Well Elev)
Site Error:	0.0ft	North Reference:	True
Reference Well:	Booth 3-23	Survey Calculation Method:	Minimum Curvature
Well Error:	0.0ft	Output errors are at	2.00 sigma
Reference Wellbore	Wellbore #1	Database:	Landmark
Reference Design:	Plan #1 (5-07-12)	Offset TVD Reference:	Offset Datum

Offset Design Booth 10 Pad Sec.23-T7N-R65W - Booth 18-23 - Wellbore #1 - Plan #1 (5-07-12)													Offset Site Error:	0.0 ft
Survey Program: 0-MWD													Offset Well Error:	0.0 ft
Measured Depth (ft)	Vertical Depth (ft)	Measured Depth (ft)	Vertical Depth (ft)	Reference	Offset	Semi Major Axis	Highside Toolface (°)	Offset Wellbore Centre +N/-S (ft)	Offset Wellbore Centre +E/-W (ft)	Between Centres (ft)	Between Ellipses (ft)	Minimum Separation (ft)	Separation Factor	Warning
2,100.0	2,095.8	2,063.9	2,026.4	4.6	7.8	-22.23		-176.6	-277.3	279.6	270.2	9.41	29.718	
2,200.0	2,194.0	2,163.5	2,122.8	4.9	8.3	-23.06		-189.0	-298.9	287.5	277.6	9.94	28.941	
2,300.0	2,292.3	2,263.1	2,219.3	5.3	8.9	-23.86		-201.3	-320.5	295.5	285.0	10.47	28.216	
2,400.0	2,390.6	2,362.7	2,315.7	5.6	9.4	-24.61		-213.6	-342.1	303.5	292.5	11.02	27.539	
2,500.0	2,488.9	2,462.3	2,412.2	5.9	9.9	-25.32		-226.0	-363.7	311.6	300.0	11.58	26.905	
2,600.0	2,587.1	2,561.9	2,508.6	6.3	10.5	-26.00		-238.3	-385.3	319.7	307.6	12.15	26.313	
2,700.0	2,685.4	2,661.5	2,605.1	6.7	11.0	-26.64		-250.7	-406.9	327.9	315.1	12.73	25.759	
2,800.0	2,783.7	2,761.1	2,701.5	7.0	11.5	-27.25		-263.0	-428.5	336.1	322.7	13.31	25.239	
2,900.0	2,882.0	2,860.7	2,798.0	7.4	12.1	-27.83		-275.4	-450.1	344.3	330.4	13.91	24.752	
3,000.0	2,980.2	2,960.3	2,894.4	7.8	12.6	-28.39		-287.7	-471.7	352.6	338.0	14.51	24.294	
3,100.0	3,078.5	3,059.9	2,990.8	8.2	13.1	-28.92		-300.1	-493.3	360.8	345.7	15.12	23.863	
3,200.0	3,176.8	3,159.5	3,087.3	8.6	13.7	-29.42		-312.4	-514.9	369.2	353.4	15.74	23.458	
3,300.0	3,275.1	3,259.1	3,183.7	9.0	14.2	-29.91		-324.8	-536.5	377.5	361.2	16.36	23.076	
3,400.0	3,373.3	3,358.7	3,280.2	9.4	14.8	-30.37		-337.1	-558.1	385.9	368.9	16.99	22.716	
3,500.0	3,471.6	3,458.3	3,376.6	9.8	15.3	-30.82		-349.5	-579.7	394.3	376.7	17.62	22.376	
3,600.0	3,570.2	3,557.8	3,472.9	10.1	15.8	-31.21		-361.8	-601.2	404.3	386.1	18.20	22.209	
3,700.0	3,669.3	3,656.9	3,569.0	10.3	16.4	-31.37		-374.1	-622.7	417.2	398.4	18.73	22.269	
3,800.0	3,768.8	3,755.6	3,664.5	10.6	16.9	-31.32		-386.3	-644.1	433.1	413.8	19.21	22.540	
3,900.0	3,868.6	3,853.8	3,759.6	10.8	17.4	-31.08		-398.5	-665.4	451.9	432.2	19.64	23.010	
4,000.0	3,968.6	3,951.3	3,854.0	10.9	18.0	-30.69		-410.6	-686.6	473.7	453.7	20.01	23.667	
4,100.0	4,068.6	4,048.1	3,947.8	11.1	18.5	-133.83		-422.6	-707.6	497.8	477.4	20.39	24.418	
4,200.0	4,168.6	4,145.0	4,041.5	11.3	19.0	-133.17		-434.6	-728.6	522.1	501.3	20.79	25.114	
4,300.0	4,268.6	4,241.8	4,135.3	11.4	19.5	-132.56		-446.6	-749.6	546.4	525.2	21.20	25.776	
4,400.0	4,368.6	4,338.6	4,229.0	11.6	20.1	-132.01		-458.6	-770.6	570.9	549.3	21.62	26.406	
4,500.0	4,468.6	4,435.5	4,322.8	11.8	20.6	-131.50		-470.6	-791.6	595.3	573.3	22.04	27.007	
4,600.0	4,568.6	4,532.3	4,416.6	12.0	21.1	-131.03		-482.6	-812.6	619.8	597.4	22.47	27.581	
4,700.0	4,668.6	4,629.1	4,510.3	12.1	21.6	-130.59		-494.6	-833.6	644.4	621.5	22.91	28.128	
4,800.0	4,768.6	4,725.9	4,604.1	12.3	22.2	-130.19		-506.6	-854.6	669.0	645.6	23.35	28.651	
4,900.0	4,868.6	4,822.8	4,697.8	12.5	22.7	-129.82		-518.6	-875.6	693.6	669.8	23.79	29.151	
5,000.0	4,968.6	4,919.6	4,791.6	12.7	23.2	-129.47		-530.6	-896.6	718.2	694.0	24.24	29.629	
5,100.0	5,068.6	5,016.4	4,885.4	12.9	23.7	-129.15		-542.6	-917.6	742.9	718.2	24.69	30.088	
5,200.0	5,168.6	5,113.3	4,979.1	13.1	24.3	-128.84		-554.6	-938.6	767.5	742.4	25.14	30.527	
5,300.0	5,268.6	5,244.4	5,106.8	13.2	24.8	-128.49		-566.5	-964.7	790.2	764.6	25.64	30.817	
5,400.0	5,368.6	5,380.2	5,240.2	13.4	25.2	-128.22		-581.9	-986.3	808.4	782.3	26.12	30.946	
5,500.0	5,468.6	5,518.1	5,376.8	13.6	25.6	-128.02		-591.3	-1,002.7	822.0	795.4	26.59	30.909	
5,600.0	5,568.6	5,657.5	5,515.7	13.8	25.8	-127.90		-597.4	-1,013.4	830.7	803.7	27.04	30.717	
5,700.0	5,668.6	5,797.8	5,655.8	14.0	26.0	-127.85		-600.2	-1,018.3	834.7	807.2	27.48	30.374	
5,800.0	5,768.6	5,910.6	5,768.6	14.2	26.1	-127.84		-600.4	-1,018.6	834.9	807.1	27.87	29.955	
5,900.0	5,868.6	6,010.6	5,868.6	14.4	26.2	-127.84		-600.4	-1,018.6	834.9	806.7	28.24	29.563	
6,000.0	5,968.6	6,110.6	5,968.6	14.6	26.3	-127.84		-600.4	-1,018.6	834.9	806.3	28.61	29.179	
6,100.0	6,068.6	6,210.6	6,068.6	14.8	26.4	-127.84		-600.4	-1,018.6	834.9	805.9	28.99	28.803	
6,200.0	6,168.6	6,310.6	6,168.6	15.0	26.5	-127.84		-600.4	-1,018.6	834.9	805.6	29.36	28.434	
6,300.0	6,268.6	6,410.6	6,268.6	15.2	26.6	-127.84		-600.4	-1,018.6	834.9	805.2	29.74	28.073	
6,400.0	6,368.6	6,510.6	6,368.6	15.4	26.7	-127.84		-600.4	-1,018.6	834.9	804.8	30.12	27.720	
6,500.0	6,468.6	6,610.6	6,468.6	15.6	26.8	-127.84		-600.4	-1,018.6	834.9	804.4	30.50	27.373	
6,600.0	6,568.6	6,710.6	6,568.6	15.8	26.9	-127.84		-600.4	-1,018.6	834.9	804.0	30.88	27.034	
6,700.0	6,668.6	6,810.6	6,668.6	16.0	27.0	-127.84		-600.4	-1,018.6	834.9	803.7	31.27	26.701	
6,800.0	6,768.6	6,910.6	6,768.6	16.2	27.2	-127.84		-600.4	-1,018.6	834.9	803.3	31.65	26.376	
6,900.0	6,868.6	7,010.6	6,868.6	16.4	27.3	-127.84		-600.4	-1,018.6	834.9	802.9	32.04	26.057	
7,000.0	6,968.6	7,110.6	6,968.6	16.6	27.4	-127.84		-600.4	-1,018.6	834.9	802.5	32.43	25.744	
7,100.0	7,068.6	7,210.6	7,068.6	16.8	27.5	-127.84		-600.4	-1,018.6	834.9	802.1	32.82	25.438	

CC - Min centre to center distance or convergent point, SF - min separation factor, ES - min ellipse separation

Company:	BAYSWATER EXPLORATION & PRODUCTION	Local Co-ordinate Reference:	Well Booth 3-23
Project:	SEC.23-T7N-R65W	TVD Reference:	WELL @ 4912.0ft (Original Well Elev)
Reference Site:	Booth 10 Pad Sec.23-T7N-R65W	MD Reference:	WELL @ 4912.0ft (Original Well Elev)
Site Error:	0.0ft	North Reference:	True
Reference Well:	Booth 3-23	Survey Calculation Method:	Minimum Curvature
Well Error:	0.0ft	Output errors are at	2.00 sigma
Reference Wellbore	Wellbore #1	Database:	Landmark
Reference Design:	Plan #1 (5-07-12)	Offset TVD Reference:	Offset Datum

Offset Design Booth 10 Pad Sec.23-T7N-R65W - Booth 18-23 - Wellbore #1 - Plan #1 (5-07-12)												Offset Site Error:	0.0 ft
Survey Program: 0-MWD												Offset Well Error:	0.0 ft
Reference	Offset	Semi Major Axis		Distance									
Measured Depth (ft)	Vertical Depth (ft)	Measured Depth (ft)	Vertical Depth (ft)	Reference (ft)	Offset (ft)	Highside Toolface (°)	Offset Wellbore Centre +N/-S (ft)	Offset Wellbore Centre +E/-W (ft)	Between Centres (ft)	Between Ellipses (ft)	Minimum Separation (ft)	Separation Factor	Warning
7,200.0	7,168.6	7,310.6	7,168.6	17.0	27.6	-127.84	-600.4	-1,018.6	834.9	801.7	33.21	25.137	
7,300.0	7,268.6	7,410.6	7,268.6	17.2	27.7	-127.84	-600.4	-1,018.6	834.9	801.3	33.61	24.843	
7,400.0	7,368.6	7,510.6	7,368.6	17.4	27.8	-127.84	-600.4	-1,018.6	834.9	800.9	34.00	24.555	
7,416.4	7,385.0	7,527.0	7,385.0	17.4	27.9	-127.84	-600.4	-1,018.6	834.9	800.9	34.07	24.508	

Company:	BAYSWATER EXPLORATION & PRODUCTION	Local Co-ordinate Reference:	Well Booth 3-23
Project:	SEC.23-T7N-R65W	TVD Reference:	WELL @ 4912.0ft (Original Well Elev)
Reference Site:	Booth 10 Pad Sec.23-T7N-R65W	MD Reference:	WELL @ 4912.0ft (Original Well Elev)
Site Error:	0.0ft	North Reference:	True
Reference Well:	Booth 3-23	Survey Calculation Method:	Minimum Curvature
Well Error:	0.0ft	Output errors are at	2.00 sigma
Reference Wellbore	Wellbore #1	Database:	Landmark
Reference Design:	Plan #1 (5-07-12)	Offset TVD Reference:	Offset Datum

Offset Design Booth 10 Pad Sec.23-T7N-R65W - Booth 31-23 - Wellbore #1 - Plan #1 (5-07-12)													Offset Site Error:	0.0 ft
Survey Program: 0-MWD													Offset Well Error:	0.0 ft
Measured Depth (ft)	Vertical Depth (ft)	Measured Depth (ft)	Vertical Depth (ft)	Reference	Offset	Semi Major Axis (ft)	Highside Toolface (°)	Offset Wellbore Centre +N/-S (ft)	+E/-W (ft)	Between Centres (ft)	Between Ellipses (ft)	Minimum Separation (ft)	Separation Factor	Warning
0.0	0.0	0.0	0.0	0.0	0.0	-20.40		14.9	-5.6	15.9	15.9	0.00	N/A	
100.0	100.0	100.0	100.0	0.1	0.1	-20.40		14.9	-5.6	15.9	15.7	0.22	70.923	
200.0	200.0	200.0	200.0	0.3	0.3	-20.40		14.9	-5.6	15.9	15.3	0.67	23.641 CC	
300.0	300.0	299.9	299.9	0.6	0.5	-26.50		14.6	-7.3	16.3	15.1	1.11	14.623 ES	
400.0	400.0	399.5	399.4	0.8	0.8	-42.65		13.4	-12.3	18.2	16.6	1.56	11.698 SF	
500.0	500.0	498.7	498.2	1.0	1.0	-61.08		11.4	-20.7	23.7	21.7	2.02	11.780	
600.0	600.0	597.1	595.9	1.2	1.3	-74.83		8.8	-32.3	33.8	31.3	2.51	13.473	
700.0	700.0	694.7	692.2	1.5	1.6	-83.49		5.4	-47.1	48.0	45.0	3.04	15.789	
800.0	800.0	791.0	786.9	1.7	2.0	-88.85		1.3	-64.8	66.1	62.5	3.62	18.233	
900.0	900.0	886.1	879.5	1.9	2.4	-92.30		-3.4	-85.2	87.7	83.5	4.26	20.598	
1,000.0	1,000.0	979.6	970.0	2.1	2.9	-94.61		-8.7	-108.3	112.7	107.8	4.94	22.806	
1,100.0	1,100.0	1,071.4	1,058.1	2.4	3.4	-96.23		-14.6	-133.7	140.9	135.2	5.67	24.838	
1,200.0	1,200.0	1,161.5	1,143.5	2.6	4.0	-97.40		-20.9	-161.3	172.2	165.7	6.45	26.699	
1,300.0	1,300.0	1,249.6	1,226.3	2.8	4.6	-98.27		-27.8	-190.8	206.5	199.2	7.27	28.406	
1,400.0	1,400.0	1,335.7	1,306.1	3.0	5.3	-98.94		-34.9	-222.0	243.6	235.5	8.13	29.979	
1,500.0	1,500.0	1,419.6	1,383.1	3.3	6.0	-99.47		-42.5	-254.7	283.5	274.5	9.02	31.435	
1,600.0	1,600.0	1,502.1	1,457.7	3.5	6.7	3.86		-50.4	-289.0	324.4	317.2	7.28	44.591	
1,700.0	1,699.8	1,593.4	1,539.6	3.7	7.5	3.49		-59.4	-328.2	363.7	356.0	7.77	46.814	
1,800.0	1,799.5	1,686.6	1,623.3	3.9	8.4	3.22		-68.6	-368.2	399.8	391.5	8.27	48.324	
1,900.0	1,898.7	1,781.1	1,708.1	4.1	9.3	3.02		-78.0	-408.8	432.6	423.8	8.79	49.210	
2,000.0	1,997.5	1,876.6	1,793.9	4.4	10.2	2.88		-87.4	-449.9	462.1	452.8	9.32	49.573	
2,100.0	2,095.8	1,972.9	1,880.3	4.6	11.1	2.78		-97.0	-491.2	489.0	479.1	9.87	49.543	
2,200.0	2,194.0	2,069.3	1,966.8	4.9	12.0	2.71		-106.5	-532.6	515.7	505.3	10.43	49.447	
2,300.0	2,292.3	2,165.6	2,053.3	5.3	12.9	2.64		-116.1	-574.0	542.4	531.4	11.00	49.333	
2,400.0	2,390.6	2,262.0	2,139.8	5.6	13.9	2.58		-125.6	-615.4	569.2	557.6	11.57	49.207	
2,500.0	2,488.9	2,358.4	2,226.3	5.9	14.8	2.52		-135.1	-656.8	595.9	583.7	12.14	49.075	
2,600.0	2,587.1	2,454.7	2,312.8	6.3	15.7	2.47		-144.7	-698.2	622.6	609.9	12.72	48.940	
2,700.0	2,685.4	2,551.1	2,399.3	6.7	16.6	2.43		-154.2	-739.6	649.3	636.0	13.30	48.803	
2,800.0	2,783.7	2,647.4	2,485.8	7.0	17.5	2.38		-163.8	-781.0	676.0	662.2	13.89	48.668	
2,900.0	2,882.0	2,743.8	2,572.3	7.4	18.5	2.34		-173.3	-822.4	702.8	688.3	14.48	48.534	
3,000.0	2,980.2	2,840.2	2,658.7	7.8	19.4	2.31		-182.8	-863.8	729.5	714.4	15.07	48.403	
3,100.0	3,078.5	2,936.5	2,745.2	8.2	20.3	2.27		-192.4	-905.2	756.2	740.6	15.66	48.275	
3,200.0	3,176.8	3,032.9	2,831.7	8.6	21.3	2.24		-201.9	-946.6	782.9	766.7	16.26	48.151	
3,300.0	3,275.1	3,129.3	2,918.2	9.0	22.2	2.21		-211.4	-988.0	809.7	792.8	16.86	48.030	
3,400.0	3,373.3	3,225.6	3,004.7	9.4	23.1	2.18		-221.0	-1,029.4	836.4	818.9	17.46	47.914	
3,500.0	3,471.6	3,322.0	3,091.2	9.8	24.0	2.16		-230.5	-1,070.8	863.1	845.1	18.06	47.804	
3,600.0	3,570.2	3,417.8	3,177.3	10.1	25.0	2.15		-240.0	-1,112.0	891.6	873.0	18.57	48.018	
3,700.0	3,669.3	3,512.7	3,262.3	10.3	25.9	2.14		-249.4	-1,152.7	923.4	904.3	19.04	48.489	
3,800.0	3,768.8	3,606.3	3,346.4	10.6	26.8	2.12		-258.7	-1,193.0	958.4	938.9	19.48	49.203	
3,900.0	3,868.6	3,698.7	3,429.3	10.8	27.7	2.11		-267.8	-1,232.6	996.7	976.9	19.87	50.152	
4,000.0	3,968.6	3,789.6	3,511.0	10.9	28.5	2.09		-276.8	-1,271.7	1,038.2	1,018.0	20.23	51.329	
4,100.0	4,068.6	3,879.5	3,591.6	11.1	29.4	-101.74		-285.7	-1,310.3	1,082.2	1,061.5	20.67	52.343	
4,200.0	4,168.6	3,969.2	3,672.2	11.3	30.3	-101.78		-294.6	-1,348.9	1,126.2	1,105.0	21.19	53.155	
4,300.0	4,268.6	4,059.0	3,752.7	11.4	31.1	-101.83		-303.5	-1,387.4	1,170.3	1,148.6	21.70	53.926	
4,400.0	4,368.6	4,148.7	3,833.3	11.6	32.0	-101.87		-312.4	-1,426.0	1,214.4	1,192.2	22.22	54.658	
4,500.0	4,468.6	4,238.5	3,913.8	11.8	32.9	-101.91		-321.3	-1,464.5	1,258.5	1,235.7	22.73	55.355	
4,600.0	4,568.6	4,328.2	3,994.4	12.0	33.7	-101.95		-330.1	-1,503.1	1,302.6	1,279.3	23.25	56.018	
4,700.0	4,668.6	4,418.0	4,075.0	12.1	34.6	-101.98		-339.0	-1,541.7	1,346.6	1,322.9	23.77	56.649	
4,800.0	4,768.6	4,507.8	4,155.5	12.3	35.5	-102.01		-347.9	-1,580.2	1,390.7	1,366.4	24.29	57.252	
4,900.0	4,868.6	4,597.5	4,236.1	12.5	36.3	-102.04		-356.8	-1,618.8	1,434.8	1,410.0	24.81	57.827	
5,000.0	4,968.6	4,687.3	4,316.7	12.7	37.2	-102.07		-365.7	-1,657.3	1,478.9	1,453.5	25.33	58.377	

CC - Min centre to center distance or convergent point, SF - min separation factor, ES - min ellipse separation

Company:	BAYSWATER EXPLORATION & PRODUCTION	Local Co-ordinate Reference:	Well Booth 3-23
Project:	SEC.23-T7N-R65W	TVD Reference:	WELL @ 4912.0ft (Original Well Elev)
Reference Site:	Booth 10 Pad Sec.23-T7N-R65W	MD Reference:	WELL @ 4912.0ft (Original Well Elev)
Site Error:	0.0ft	North Reference:	True
Reference Well:	Booth 3-23	Survey Calculation Method:	Minimum Curvature
Well Error:	0.0ft	Output errors are at	2.00 sigma
Reference Wellbore	Wellbore #1	Database:	Landmark
Reference Design:	Plan #1 (5-07-12)	Offset TVD Reference:	Offset Datum

Offset Design Booth 10 Pad Sec.23-T7N-R65W - Booth 31-23 - Wellbore #1 - Plan #1 (5-07-12)													Offset Site Error:	0.0 ft
Survey Program: 0-MWD													Offset Well Error:	0.0 ft
Measured Depth (ft)	Vertical Depth (ft)	Measured Depth (ft)	Vertical Depth (ft)	Reference	Offset	Semi Major Axis	Highside Toolface (°)	Offset Wellbore Centre +N/-S (ft)	Offset Wellbore Centre +E/-W (ft)	Between Centres (ft)	Between Ellipses (ft)	Minimum Separation (ft)	Separation Factor	Warning
5,100.0	5,068.6	4,777.0	4,397.2	12.9	38.1	-102.09		-374.6	-1,695.9	1,523.0	1,497.1	25.86	58.903	
5,200.0	5,168.6	4,866.8	4,477.8	13.1	38.9	-102.12		-383.5	-1,734.5	1,567.0	1,540.7	26.38	59.406	
5,300.0	5,268.6	4,956.5	4,558.4	13.2	39.8	-102.14		-392.3	-1,773.0	1,611.1	1,584.2	26.90	59.888	
5,400.0	5,368.6	5,046.3	4,638.9	13.4	40.7	-102.17		-401.2	-1,811.6	1,655.2	1,627.8	27.43	60.351	
5,500.0	5,468.6	5,136.1	4,719.5	13.6	41.5	-102.19		-410.1	-1,850.1	1,699.3	1,671.3	27.95	60.794	
5,600.0	5,568.6	5,225.8	4,800.0	13.8	42.4	-102.21		-419.0	-1,888.7	1,743.4	1,714.9	28.48	61.220	
5,700.0	5,668.6	5,315.6	4,880.6	14.0	43.3	-102.23		-427.9	-1,927.3	1,787.5	1,758.5	29.00	61.629	
5,800.0	5,768.6	5,405.3	4,961.2	14.2	44.1	-102.24		-436.8	-1,965.8	1,831.5	1,802.0	29.53	62.023	
5,900.0	5,868.6	5,505.1	5,050.7	14.4	45.1	-102.26		-446.6	-2,008.6	1,875.6	1,845.5	30.09	62.336	
6,000.0	5,968.6	5,776.9	5,300.5	14.6	46.9	-102.30		-470.6	-2,112.7	1,914.9	1,883.8	31.12	61.527	
6,100.0	6,068.6	6,069.2	5,579.3	14.8	48.4	-102.34		-490.3	-2,198.3	1,945.0	1,912.9	32.12	60.561	
6,200.0	6,168.6	6,377.9	5,881.6	15.0	49.5	-102.36		-504.1	-2,258.1	1,965.0	1,932.0	33.01	59.526	
6,300.0	6,268.6	6,696.7	6,199.0	15.2	50.0	-102.37		-510.6	-2,286.3	1,974.1	1,940.3	33.75	58.492	
6,400.0	6,368.6	6,866.4	6,368.6	15.4	50.1	-102.37		-511.0	-2,288.1	1,974.6	1,940.4	34.18	57.766	
6,500.0	6,468.6	6,966.4	6,468.6	15.6	50.2	-102.37		-511.0	-2,288.1	1,974.6	1,940.1	34.53	57.193	
6,600.0	6,568.6	7,066.4	6,568.6	15.8	50.3	-102.37		-511.0	-2,288.1	1,974.6	1,939.8	34.87	56.629	
6,700.0	6,668.6	7,166.4	6,668.6	16.0	50.3	-102.37		-511.0	-2,288.1	1,974.6	1,939.4	35.22	56.073	
6,800.0	6,768.6	7,266.4	6,768.6	16.2	50.4	-102.37		-511.0	-2,288.1	1,974.6	1,939.1	35.56	55.524	
6,900.0	6,868.6	7,366.4	6,868.6	16.4	50.4	-102.37		-511.0	-2,288.1	1,974.6	1,938.7	35.91	54.984	
7,000.0	6,968.6	7,466.4	6,968.6	16.6	50.5	-102.37		-511.0	-2,288.1	1,974.6	1,938.4	36.26	54.451	
7,100.0	7,068.6	7,566.4	7,068.6	16.8	50.6	-102.37		-511.0	-2,288.1	1,974.6	1,938.0	36.62	53.926	
7,200.0	7,168.6	7,666.4	7,168.6	17.0	50.6	-102.37		-511.0	-2,288.1	1,974.6	1,937.7	36.97	53.409	
7,300.0	7,268.6	7,766.4	7,268.6	17.2	50.7	-102.37		-511.0	-2,288.1	1,974.6	1,937.3	37.33	52.899	
7,400.0	7,368.6	7,866.4	7,368.6	17.4	50.8	-102.37		-511.0	-2,288.1	1,974.6	1,936.9	37.69	52.396	
7,416.4	7,385.0	7,882.8	7,385.0	17.4	50.8	-102.37		-511.0	-2,288.1	1,974.6	1,936.9	37.75	52.314	

Reference Depths are relative to WELL @ 4912.0ft (Original Well Elev) Coordinates are relative to: Booth 3-23
Offset Depths are relative to Offset Datum Coordinate System is US State Plane 1983, Colorado Northern Zone
Central Meridian is -105.500000 ° Grid Convergence at Surface is: 0.56°



Company:	BAYSWATER EXPLORATION & PRODUCTION	Local Co-ordinate Reference:	Well Booth 3-23
Project:	SEC.23-T7N-R65W	TVD Reference:	WELL @ 4912.0ft (Original Well Elev)
Reference Site:	Booth 10 Pad Sec.23-T7N-R65W	MD Reference:	WELL @ 4912.0ft (Original Well Elev)
Site Error:	0.0ft	North Reference:	True
Reference Well:	Booth 3-23	Survey Calculation Method:	Minimum Curvature
Well Error:	0.0ft	Output errors are at	2.00 sigma
Reference Wellbore	Wellbore #1	Database:	Landmark
Reference Design:	Plan #1 (5-07-12)	Offset TVD Reference:	Offset Datum

Reference Depths are relative to WELL @ 4912.0ft (Original Well Elev) Coordinates are relative to: Booth 3-23
 Offset Depths are relative to Offset Datum
 Central Meridian is -105.500000 °
 Coordinate System is US State Plane 1983, Colorado Northern Zone
 Grid Convergence at Surface is: 0.56°

