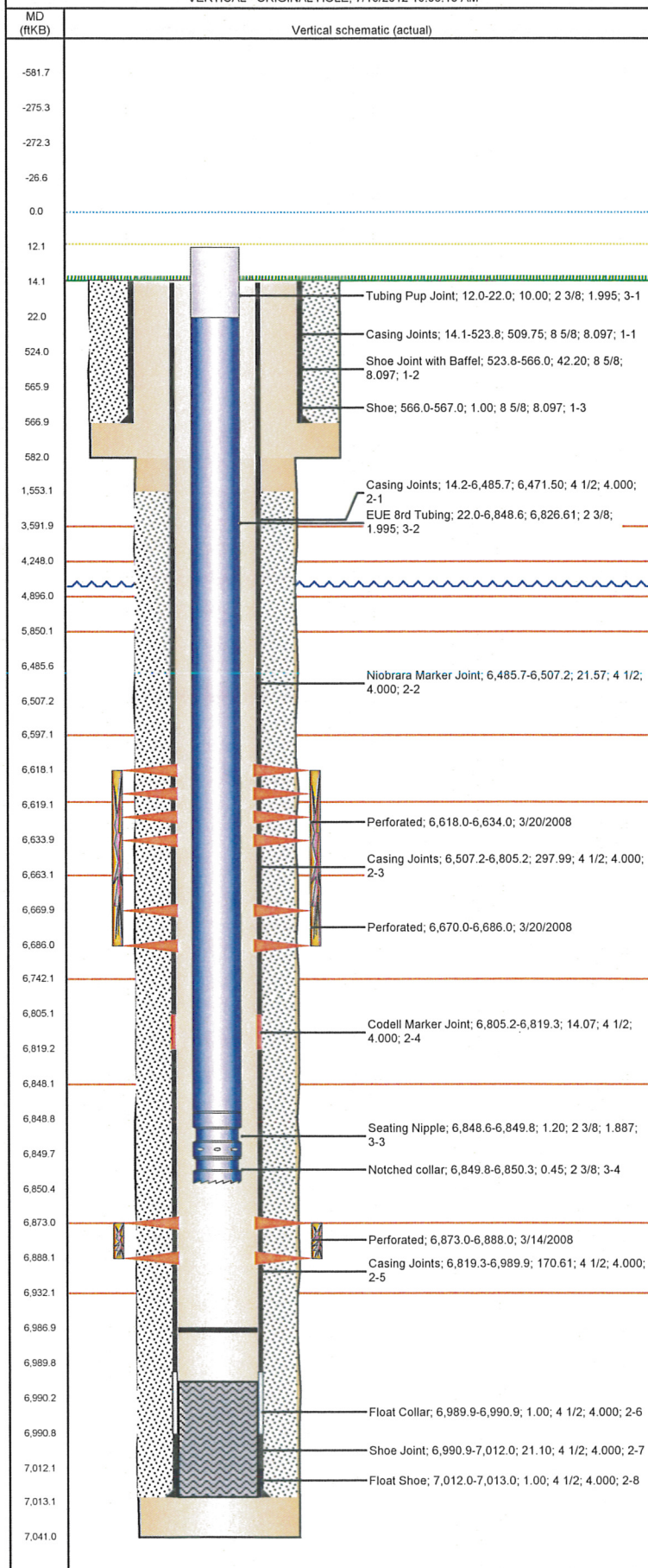


**Well Name: AMANDA ALTER C09-20**

VERTICAL - ORIGINAL HOLE, 7/10/2012 10:05:18 AM



## Well Header

API 05-123-25507	Business Unit WATTENBERG	District 15	Well Config VERTICAL
Original KB Elevation (ft) 4,721.00	KB - GL / MSL (ftKB) 14.00	Spud Date 3/3/2008	P & A Date

## Comment

NOTE TO FILE BLADE BIT BOTTOM OF WELL TAGGED W/SLICK LINE @ 6991'

## Directions To Well

WCR 46 & WCR 55, 4 1/10 NORTH, WEST 1/2 MILE ALONG FENCE LINE S/W INTO. VERY PICKY LAND OWNER

## Current PBTD (ftKB)

ORIGINAL HOLE - 6,987.0

## Surface Location (Congressional)

Quarter 1	Quarter 2	Quarter 3	Quarter 4	Section	Township	Twnshp N...	Range	Rng E/W Dir
		NW	SW	9	4	N	64	W

## Bottom Hole Location

North-South Distance (ft)	From N or S Line	East-West Distance (ft)	From E or W Line

## Plug Back Total Depths

Date	Depth (ftKB)	Method	Com
3/7/2008	6,990.0	CASING TALLY	FLOAT COLLAR
3/12/2008	6,966.0	CASED HOLE LOG	DEPTH LOGGER ON CBL

## Wellbore Sections

Section Des	Size (in)	Act Top (ftKB)	Act Btm (ftKB)
SURFACE	12 1/4	14.0	582.0
PRODUCTION	7 7/8	582.0	7,041.0

## Zone Statuses

Zone Name	Status Date	Status	Job
NIOBRARA	4/5/2008	PR	DRILLING/COMPLETION - ORIGINAL, 3/4/2008 00:00
CODELL	4/5/2008	PR	DRILLING/COMPLETION - ORIGINAL, 3/4/2008 00:00
CODELL	3/29/2012	PR	RE-FRAC, 12/27/2011 06:00

## Casing Strings

Csg Des	Run Date	OD (in)	Wt/Len (lb/ft)	Grade	Top (ftKB)	Set Depth (ftKB)
SURFACE	3/4/2008	8 5/8	24.00	J-55	14.1	567.0
PRODUCTION CASING	3/7/2008	4 1/2	11.60	M-80	14.2	7,013.0

## Cement

Des	Top (ftKB)	Btm (ftKB)
Surface Casing Cement	14.0	567.0
Production Casing Cement	1,553.0	7,013.0

## Tubing Components

Item Des	OD (in)	Wt (lb/ft)	Grade	Jts	Len (ft)
Tubing Pup Joint	2 3/8	4.70	J-55	1	10.00
EUE 8rd Tubing	2 3/8	4.70	J-55	223	6,826.61
Seating Nipple	2 3/8	5.40	J-55	1	1.20
Notched collar	2 3/8		J-55	1	0.45

## Perforation Data

Zone	Bnch/St g	Entered Shot Total	Top (ftKB)	Btm (ftKB)	Date
NIOBRARA, ORIGINAL HOLE		64	6,618.0	6,634.0	3/20/2008
NIOBRARA, ORIGINAL HOLE		64	6,670.0	6,686.0	3/20/2008
CODELL, ORIGINAL HOLE		60	6,873.0	6,888.0	3/14/2008

## Stimulations & Treatments

Bnch/Stg	Date	Zone	Primary Job Type
	3/20/2008	CODELL, ORIGINAL HOLE	DRILLING/COMPLETION - ORIGINAL

Total Add Amount 0; Ottawa 271182 lb	Total Clean Volume... 132663.30	Vol Slurry Tot (gal) 145086.48	Vol Gas Tot (MCF)
Avg Treat Pressure (psi) 3,738.0	Max Treat Pressure (psi) 3,989.0	Avg Treat Rate (bbl/min) 23.40	Max Treat Rate (bbl/min) 23.80

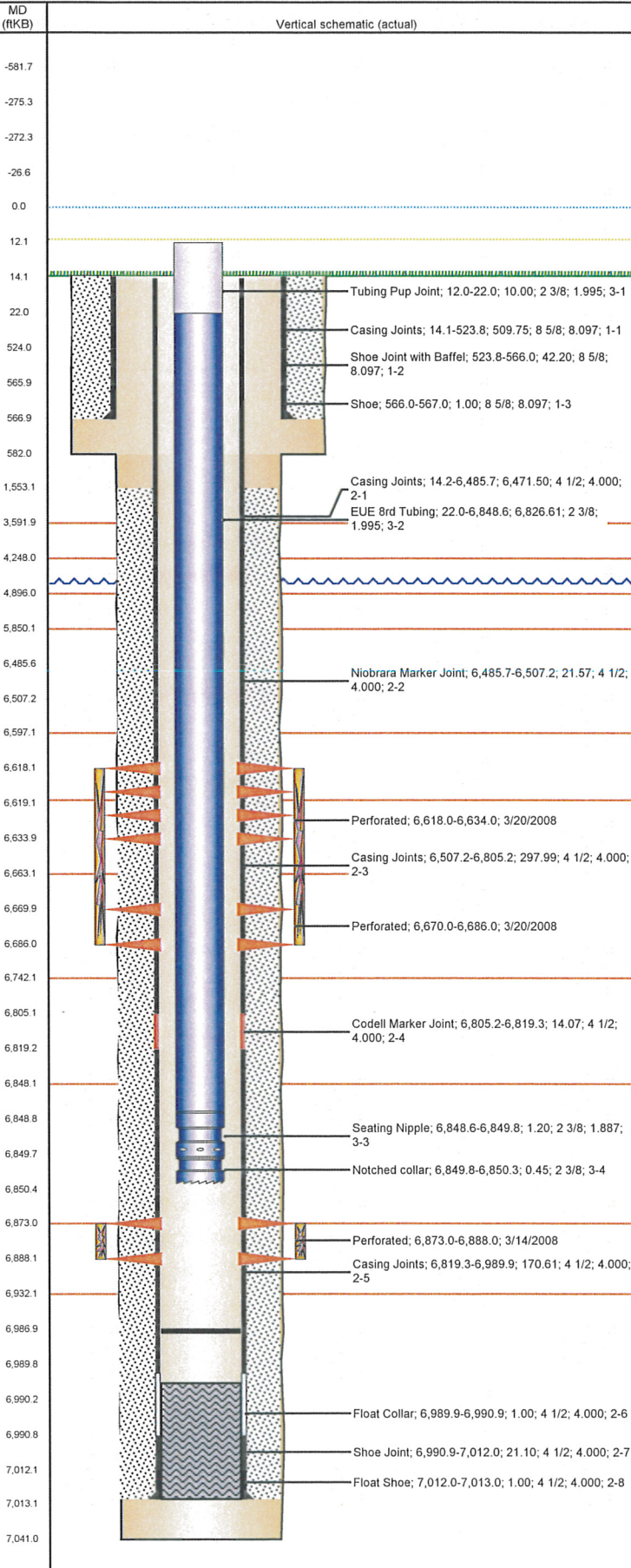
Bnch/Stg	Date	Zone	Primary Job Type
	3/20/2008	NIOBRARA, ORIGINAL HOLE	DRILLING/COMPLETION - ORIGINAL

Total Add Amount Ottawa 250578 lb	Total Clean Volume... 173662.02	Vol Slurry Tot (gal) 184918.03	Vol Gas Tot (MCF)
Avg Treat Pressure (psi) 4,378.0	Max Treat Pressure (psi) 4,486.0	Avg Treat Rate (bbl/min) 50.20	Max Treat Rate (bbl/min) 51.20



**Well Name: AMANDA ALTER C09-20**

VERTICAL - ORIGINAL HOLE, 7/10/2012 10:05:18 AM



## Stimulations & Treatments

Brnch/Stg	Date	Zone	Primary Job Type	
	1/9/2012	CODELL, ORIGINAL HOLE	RE-FRAC	
Comment				
Total Add Amount		Total Clean Volume...	Vol Slurry Tot (gal)	Vol Gas Tot (MCF)
Proppant Ottawa 89139.101 lb		123271.68	133222.32	
Avg Treat Pressure (psi)	Max Treat Pressure (psi)	Avg Treat Rate (bbl/min)	Max Treat Rate (bbl/min)	
4,690.0	8,032.0	14.40	15.10	

## Other In Hole

Run Date	Des	OD (in)	Top (ftKB)	Btm (ftKB)

## Logs

Date	Type	Top (ftKB)	Btm (ftKB)
3/6/2008	Caliper/Comp.Density/Neutron/GR/SP /ML	2,520.0	7,012.0
3/6/2008	DIL/GR/SP/Caliper	567.0	7,032.0
3/12/2008	CBL/CCL/GR	1,410.0	6,964.0